



ELECTRONIC COPY

DIAMOND REPORT

July 17, 2024	
IGI Report Number	642434596
Description	NATURAL DIAMOND
Shape and Cutting Style	ROUND BRILLIANT
Measurements	9.06 - 9.14 X 5.41 MM

GRADING RESULTS

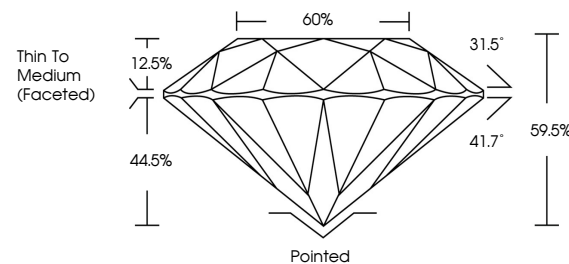
Carat Weight	2.68 CARATS
Color Grade	J
Clarity Grade	VVS 2
Cut Grade	EXCELLENT

ADDITIONAL GRADING INFORMATION

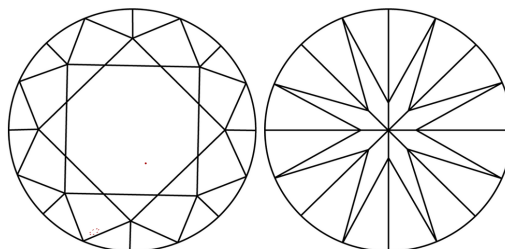
Polish	EXCELLENT
Symmetry	EXCELLENT
Fluorescence	NONE
Inscription(s)	131 642434596

642434596
Report verification at igi.org

PROPORTIONS

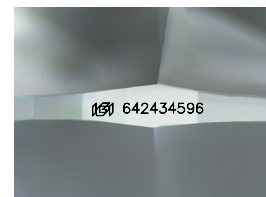


CLARITY CHARACTERISTICS



KEY TO SYMBOLS

Red symbols indicate internal characteristics.
Green symbols indicate external characteristics.



Sample Image Used

COLOR

D - F	G - J	K - M	N - R	S - Z	FANCY
Colorless	Near Colorless	Slightly Tinted	Very Light Color	Light Color	

CLARITY

IF	VVS ¹⁻²	VS ¹⁻²	SI ¹⁻²	I ¹⁻³
Internally Flawless	Very Very Slightly Included	Very Slightly Included	Slightly Included	Included



© IGI 2020, International Gemological Institute

FD - 10 20

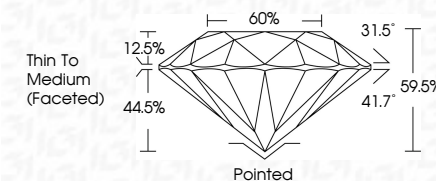
DIAMOND REPORT



July 17, 2024	
IGI Report Number	642434596
Description	NATURAL DIAMOND
Shape and Cutting Style	ROUND BRILLIANT
Measurements	9.06 - 9.14 X 5.41 MM

GRADING RESULTS

Carat Weight	2.68 CARATS
Color Grade	J
Clarity Grade	VVS 2
Cut Grade	EXCELLENT



ADDITIONAL GRADING INFORMATION

Polish	EXCELLENT
Symmetry	EXCELLENT
Fluorescence	NONE
Inscription(s)	(15) 642434596



IG

July 17, 2024
IGI Report No 642434596
ROUND BRILLIANT

2.06 - 9.14 X 5.41 MM

2.68 CARATS

WS2

WS 2
EXCELLENT
EQ 587

59.5% 60%

60%
To Medium
(Faint)

(Faceted)

Pointed
EXCELLENT

EXCELLENT
EXCELLENT

NONE

Culet	
Polish	
Symmetry	
Fluorescence	
Inscription(s)	