



ELECTRONIC COPY

642424288
Report verification at igi.org



July 24, 2024
IGI Report Number **642424288**
Description **NATURAL DIAMOND**
Shape and Cutting Style **ROUND BRILLIANT**
Measurements **6.64 - 6.70 X 4.17 MM**

GRADING RESULTS

Carat Weight **1.15 CARAT**
Color Grade **J**
Clarity Grade **VS 2**
Cut Grade **EXCELLENT**

DIAMOND REPORT

July 24, 2024
IGI Report Number **642424288**
Description **NATURAL DIAMOND**
Shape and Cutting Style **ROUND BRILLIANT**
Measurements **6.64 - 6.70 X 4.17 MM**

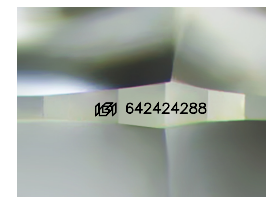
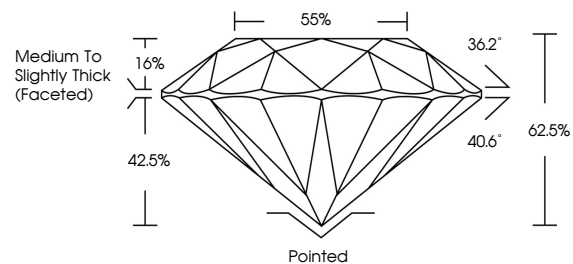
GRADING RESULTS

Carat Weight **1.15 CARAT**
Color Grade **J**
Clarity Grade **VS 2**
Cut Grade **EXCELLENT**

ADDITIONAL GRADING INFORMATION

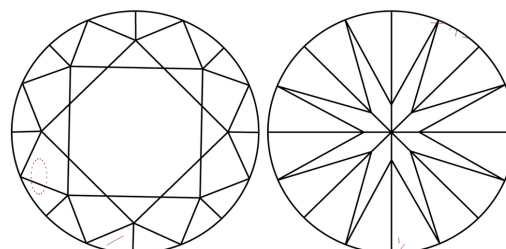
Polish **EXCELLENT**
Symmetry **EXCELLENT**
Fluorescence **NONE**
Inscription(s) **642424288**
Comments: IDEAL CUT ROUND BRILLIANT

PROPORTIONS



Sample Image Used

CLARITY CHARACTERISTICS



KEY TO SYMBOLS

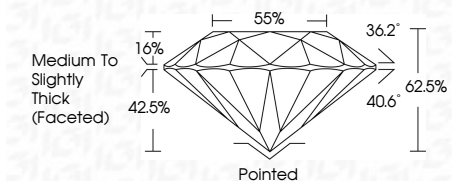
Red symbols indicate internal characteristics.
Green symbols indicate external characteristics.

COLOR

D - F	G - J	K - M	N - R	S - Z	FANCY
Colorless	Near Colorless	Slightly Tinted	Very Light Color	Light Color	

CLARITY

IF	VS ¹⁻²	VS ¹⁻²	SI ¹⁻²	I ¹⁻³
Internally Flawless	Very Very Slightly Included	Very Slightly Included	Slightly Included	Included



ADDITIONAL GRADING INFORMATION

Polish **EXCELLENT**
Symmetry **EXCELLENT**
Fluorescence **NONE**
Inscription(s) **642424288**
Comments: IDEAL CUT ROUND BRILLIANT



IGI

July 24, 2024
IGI Report No. 642424288
ROUND BRILLIANT
6.64 - 6.70 X 4.17 MM
Carat Weight **1.15 CARAT**
Color Grade **J**
Clarity Grade **VS 2**
Cut Grade **EXCELLENT**
Depth **62.5%**
Table **55%**
Girdle **Medium To Slightly Thick (Faceted)**
Culet **Pointed**
Polish **EXCELLENT**
Symmetry **EXCELLENT**
Fluorescence **NONE**
Inscription(s) **642424288**
Comments: **IDEAL CUT ROUND BRILLIANT**