



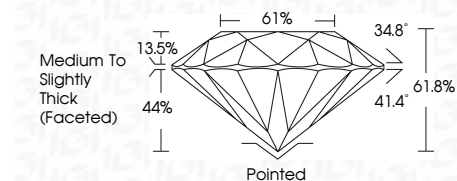
**ELECTRONIC COPY**

638470241  
Report verification at [igi.org](http://igi.org)



June 20, 2024  
IGI Report Number **638470241**  
Description **NATURAL DIAMOND**  
Shape and Cutting Style **ROUND BRILLIANT**  
Measurements **9.93 - 10.01 X 6.17 MM**

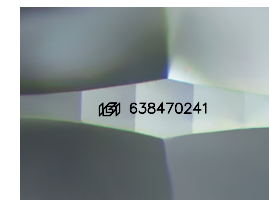
**GRADING RESULTS**  
Carat Weight **3.81 CARATS**  
Color Grade **H**  
Clarity Grade **VVS 1**  
Cut Grade **EXCELLENT**



**ADDITIONAL GRADING INFORMATION**  
Polish **EXCELLENT**  
Symmetry **EXCELLENT**  
Fluorescence **NONE**  
Inscription(s) **IGI 638470241**

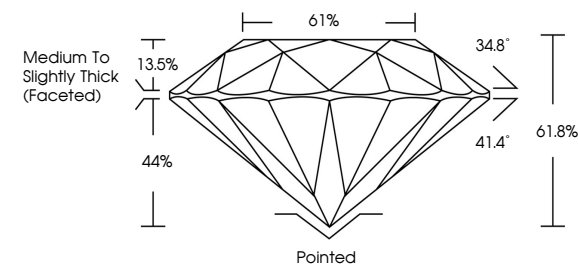


June 20, 2024  
IGI Report No. 638470241  
**ROUND BRILLIANT**  
9.93 - 10.01 X 6.17 MM  
3.81 CARATS  
H  
VVS 1  
EXCELLENT  
61.8%  
61%  
Medium to Slightly Thick (Faceted)  
Pointed  
EXCELLENT  
EXCELLENT  
NONE  
IGI 638470241

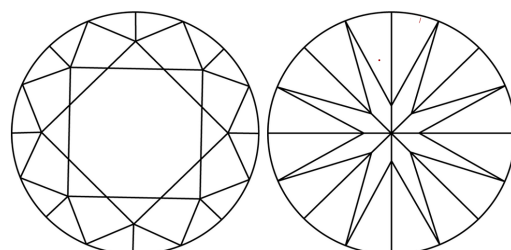


Sample Image Used

**PROPORTIONS**



**CLARITY CHARACTERISTICS**



**KEY TO SYMBOLS**

Red symbols indicate internal characteristics.  
Green symbols indicate external characteristics.

**COLOR**

D - F	G - J	K - M	N - R	S - Z	FANCY
Colorless	Near Colorless	Slightly Tinted	Very Light Color	Light Color	

**CLARITY**

IF	VS <sup>1-2</sup>	VS <sup>1-2</sup>	SI <sup>1-2</sup>	I <sup>1-3</sup>
Internally Flawless	Very Very Slightly Included	Very Slightly Included	Slightly Included	Included



June 20, 2024  
IGI Report Number **638470241**  
Description **NATURAL DIAMOND**  
Shape and Cutting Style **ROUND BRILLIANT**  
Measurements **9.93 - 10.01 X 6.17 MM**

**GRADING RESULTS**  
Carat Weight **3.81 CARATS**  
Color Grade **H**  
Clarity Grade **VVS 1**  
Cut Grade **EXCELLENT**

**ADDITIONAL GRADING INFORMATION**  
Polish **EXCELLENT**  
Symmetry **EXCELLENT**  
Fluorescence **NONE**  
Inscription(s) **IGI 638470241**