



ELECTRONIC COPY

DIAMOND REPORT

October 28, 2024	
IGI Report Number	634410788
Description	NATURAL DIAMOND
Shape and Cutting Style	ROUND BRILLIANT
Measurements	9.85 - 9.98 X 6.28 MM

GRADING RESULTS

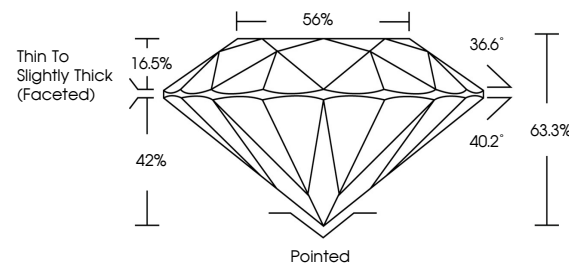
Carat Weight	3.90 CARATS
Color Grade	H
Clarity Grade	VS 1
Cut Grade	EXCELLENT

ADDITIONAL GRADING INFORMATION

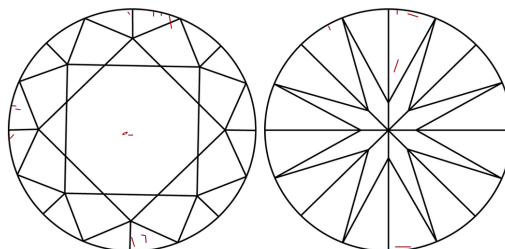
Polish	EXCELLENT
Symmetry	EXCELLENT
Fluorescence	NONE
Inscription(s)	131 634410788

634410788
Report verification at igi.org

PROPORTIONS

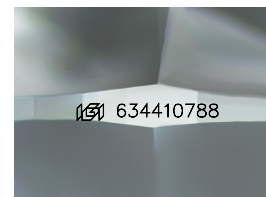


CLARITY CHARACTERISTICS



KEY TO SYMBOLS

Red symbols indicate internal characteristics.
Green symbols indicate external characteristics.



Sample Image Used

COLOR

D - F	G - J	K - M	N - R	S - Z	FANCY
Colorless	Near Colorless	Slightly Tinted	Very Light Color	Light Color	

CLARITY

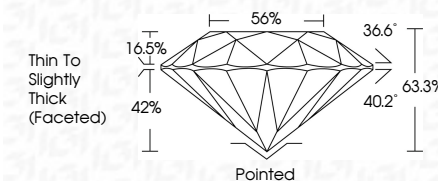
IF	VS ¹⁻²	VS ¹⁻²	SI ¹⁻²	I ¹⁻³
Internally Flawless	Very Very Slightly Included	Very Slightly Included	Slightly Included	Included



October 28, 2024	
IGI Report Number	634410788
Description	NATURAL DIAMOND
Shape and Cutting Style	ROUND BRILLIANT
Measurements	9.85 - 9.98 X 6.28 MM

GRADING RESULTS

Carat Weight	3.90 CARATS
Color Grade	H
Clarity Grade	VS 1
Cut Grade	EXCELLENT



ADDITIONAL GRADING INFORMATION

Polish	EXCELLENT
Symmetry	EXCELLENT
Fluorescence	NONE
Inscription(s)	1561 634410788



© IGI 2020, International Gemological Institute

FD - 10 20

www.igi.org



THIS DOCUMENT WAS PRODUCED WITH THE FOLLOWING SECURITY MEASURES: SPECIAL DOCUMENT PAPER, INK SCREENS, WATERMARK, BACKGROUND DESIGNS, HOLOGRAM AND OTHER SECURITY FEATURES NOT LISTED AND DO EXCEED DOCUMENT SECURITY INDUSTRY GUIDELINE

October 28, 2024
IGI Report No 634410788
ROUND BRILLIANT

9.85 - 9.98 X 28 MM	Carat Weight	VS 1	3.90 CARATS
	Color Grade	EXCELLENT	H
	Clarity Grade	63.9%	
	Cut Grade	56%	
	Depth	Thin To Slightly Thick	
	Table	(faceted)	
	Girdle	Pointed	
	Culet	EXCELLENT	
	Polish	EXCELLENT	
	Symmetry	EXCELLENT	
	Fluorescence	NONE	