

2013+ Subaru BRZ/Scion FR-S Adjustable Front Sway Bar Kit

Package Contents:

- 1x Adjustable Front Sway Bar
- 2x Sway Bar Mount Bushings
- 1x Container of Lubricant

Installation Instructions for Front Sway Bar:

- 1) Jack up front of vehicle and place on jack stands or ramps.
- 2) Remove the plastic and aluminum underbody covers.
- 3) Remove center jacking plate (10x 14mm bolts). (See **Figure 2**)
- 4) Unbolt end links from front sway bar by inserting a 6mm hex key into the end of the end link stud, then turning the 17mm nut with a wrench. (See **Figure 1**)



Figure 3

- 5) Remove the eight bolts that secure the subframe brackets to the underside of the vehicle, then drop the sway bar assembly down. (See **Figure 2**)



Figure 2

- 6) Remove the two bolts and two nuts that secure the sway bar bushing brackets to the subframe brackets. (See **Figure 3**)



Figure 3

- 7) Thoroughly lubricate inside of RCE urethane sway bar bushings and slide them into place on the RCE sway bar. (See **Figure 4**)



Figure 4

- 8) Bolt the RCE sway bar onto the subframe brackets using the OEM bushing brackets and hardware. (See **Figure 5**)



Figure 5

- 9) Reinstall the subframe and sway bar assembly onto the vehicle. (See **Figure 6**)



Figure 6

- 10) Bolt end links to sway bar in the desired position. Position A is the softer setting, while Position B is the stiffer setting. (See **Figure 7**)

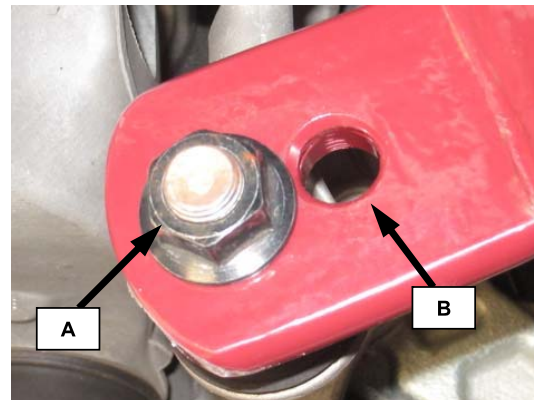


Figure 7

- 11) Review your installation and make sure all connections are tight and the sway bar is properly positioned.
11) Reinstall the plastic and aluminum underbody covers.
13) Remove car from jack stands or ramps.

NOTE: For noise-free operation, inspect and lubricate sway bar bushings periodically.