

quality . service  
innovation . integrity

# X600 Series



## Features

This series of submersible pumps is designed for use in residential, commercial or industrial wastewater applications in Class I, Division 1, Group C and D locations. Each pump is FM/CSA approved and features innovative motor and electrical enclosures that are designed to reduce the risk of vapor ignition both inside and outside the pump. Should vapors inside the electrical enclosures become ignited, the enclosures are engineered to contain the event and prevent escalation. Each pump is constructed of hardware that will allow it to operate safely and efficiently in extreme conditions. As with every Zoeller pump, each one is 100% factory tested to ensure quality and reliability for years of trouble free performance! This attention to detail is an inherent feature of every pump in this series, making it one of the most reliable in the industry.

- All units require a control panel with intrinsically safe relays and a moisture indicator.
- Surface temperature code T5 (1 Ph) or T6 (3 Ph).
- An optional lifting bail is available for easy installation and removal.
- All models are hermetically sealed to be watertight, dust-tight, and completely submersible.

Reserve Powered Design: For unusual conditions, a reserve safety factor is engineered into the design of every pump.

## Specifications

### Motor Characteristics

Motor	1 - 7-1/2 HP
Voltage	200 - 575 V
Phase	1 or 3 Ph
Hertz	60 Hz
RPM	1750 RPM
Type	Capacitor start / capacitor run or 3 phase
Insulation	Class F
Amps	1.6 - 28.0 Amps

### Pump Characteristics

Operation	Nonautomatic
Discharge Size	3" NPT (optional 3" or 4" flange available)
Solids Handling	2-1/2" (63 mm) spherical solids
Cord Length	25' (8 m) standard
Cord Type	UL listed power and sensor cord
Max Head	65' (19.8 m)
Max Flow Rate	600 GPM (2,271 LPM)
Max Operating Temp	104 °F (40 °C)
Cooling	Oil filled with finned housings
Motor Protection	Thermal sensors and moisture sensors

### Materials Characteristics

Cap	Cast iron
Motor Housing	Cast iron
Pump Housing	Cast iron
Base	Cast iron
Upper Bearing	Oversized ball bearing
Lower Bearing	Oversized ball bearing
Mechanical Seals	Carbon and ceramic with stainless steel parts
Impeller Type	Semi-open
Impeller	Ductile iron
Hardware	Stainless steel
Motor Shaft	416 stainless steel



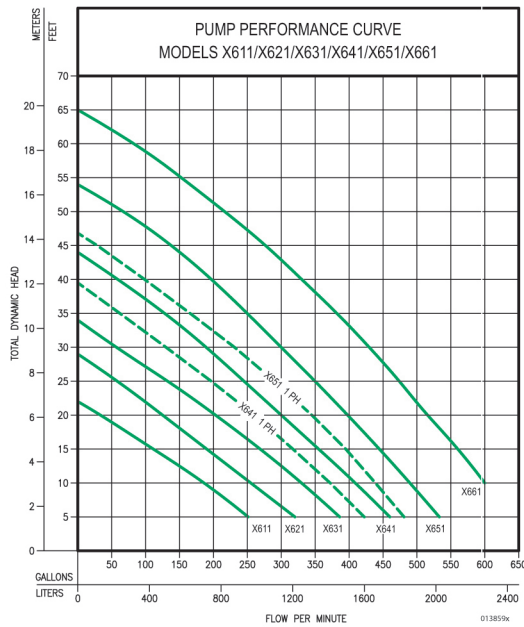
**PUMP COMPANY**

*Zoeller Family of Water Solutions™*

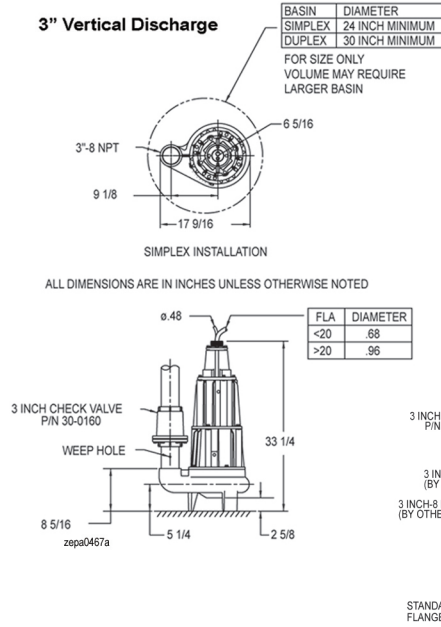
FM2203\_Ea

Updated 0616

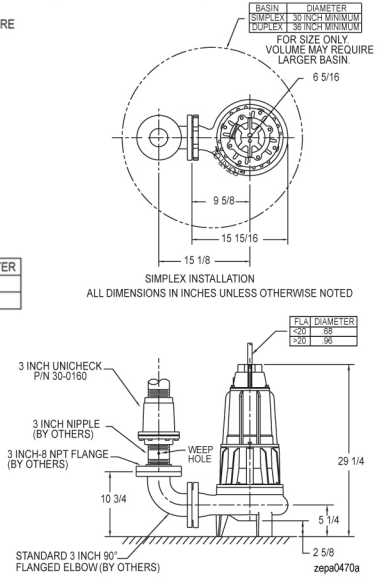
# X600 Series



## 3" Vertical Discharge



## 3" Flanged Discharge



## Model

Model Number	Seal	Mode	Volts	Phase	Amps	HP	Hz	Lbs	Kg
EX611	Double	Non	230	1	6.9	1	60	295	133
JX611	Double	Non	200	3	4.8	1	60	295	133
FX611	Double	Non	230	3	4.2	1	60	295	133
GX611	Double	Non	460	3	2.1	1	60	295	133
BAX611	Double	Non	575	3	1.7	1	60	295	133
EX621	Double	Non	230	1	8.9	1-1/2	60	295	133
JX621	Double	Non	200	3	5.9	1-1/2	60	295	133
FX621	Double	Non	230	3	5.1	1-1/2	60	295	133
GX621	Double	Non	460	3	2.6	1-1/2	60	295	133
BAX621	Double	Non	575	3	2.0	1-1/2	60	295	133
EX631	Double	Non	230	1	14.5	2	60	295	133
JX631	Double	Non	200	3	7.8	2	60	295	133
FX631	Double	Non	230	3	6.8	2	60	295	133
GX631	Double	Non	460	3	3.4	2	60	295	133
BAX631	Double	Non	575	3	2.7	2	60	295	133
EX641	Double	Non	230	1	17.0	3	60	295	133
JX641	Double	Non	200	3	11.0	3	60	295	133
FX641	Double	Non	230	3	9.6	3	60	295	133
GX641	Double	Non	460	3	4.8	3	60	295	133
BAX641	Double	Non	575	3	3.9	3	60	295	133
EX651	Double	Non	230	1	28.0	5	60	295	133
JX651	Double	Non	200	3	17.5	5	60	295	133
FX651	Double	Non	230	3	15.2	5	60	295	133
GX651	Double	Non	460	3	7.6	5	60	295	133
BAX651	Double	Non	575	3	6.1	5	60	295	133
JX661	Double	Non	200	3	25.3	7-1/2	60	295	133
FX661	Double	Non	230	3	22.0	7-1/2	60	295	133
GX661	Double	Non	460	3	11.0	7-1/2	60	295	133
BAX661	Double	Non	575	3	9.0	7-1/2	60	295	133

Additional cord lengths are available in 35' (11 m) and 50' (15 m).

**Your Peace of Mind is Our Top Priority®**  
3649 Cane Run Rd | Louisville, KY 40211 USA

+1 502-778-2731 | 1-800-928-7867 | Fax: +1 502-774-3624  
www.zoeller.com

Product information presented here reflects conditions at time of publication. Consult factory regarding discrepancies or inconsistencies. Copyright Zoeller Company. All rights reserved.