

MODEL SG SUCTION GUIDES | SUBMITTAL

File No: 35.52
 Date: MAY 15, 2017
 Supersedes: 35.52
 Date: SEPTEMBER 3, 2013

Job: _____ Representative: _____
 _____ Ordered by: _____ Date: _____
 Engineer: _____ Submitted by: _____ Date: _____
 Contractor: _____ Approved by: _____ Date: _____

MODEL NUMBER	CONNECTION SIZES ANSI 125 FLANGED		QUANTITY REQUIRED	IDENTIFICATION
	INLET FROM SYSTEM NPTF	OUTLET TO PUMP		

MATERIALS OF CONSTRUCTION

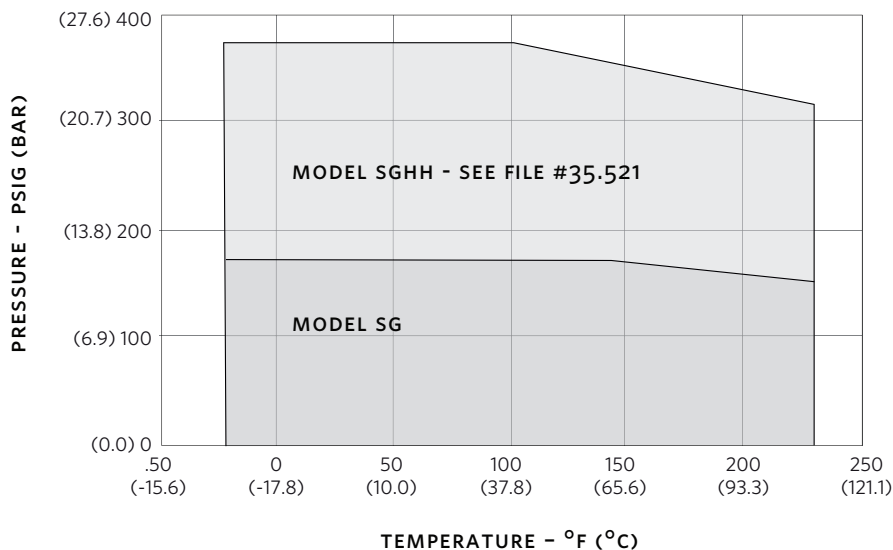
Body: Cast iron
Strainer: Stainless steel, 0.125" (3 mm) perf.
Start-up strainer (remove after 1 week): Fine mesh
 galvanized steel
Guide vanes: Cast iron
Inlet gauge tapping: 1/4" NPT - plugged

MAXIMUM PUMP OPERATING CONDITIONS

ANSI 125
 175 psig at 230°F (12 bar at 110°C)

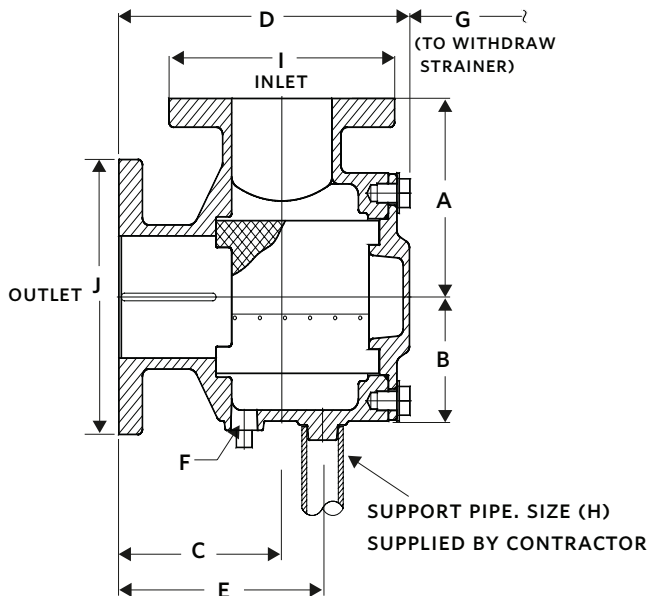
OPTIONS

PRESSURE TEMPERATURE LIMITS



PRESSURE DROP - FT (M) OF WATER @ FLOW IN USGPM (L/S)

MODEL	VELOCITY - FT/S (M/S)						
	3 (0.91)	4 (1.22)	5 (1.52)	6 (1.83)	8 (2.44)	10 (3.05)	12 (3.66)
SG-22							
SG-252	0.11 (0.03) @ 32 (2.0)	0.20 (0.06) @ 43 (2.7)	0.32 (0.10) @ 54 (3.4)	0.32 (0.10) @ 54 (3.4)	0.80 (0.25) @ 86 (5.4)	0.80 (0.25) @ 86 (5.4)	1.72 (0.54) @ 128 (8.1)
SG-32							
SG-2525							
SG-325	0.18 (0.05) @ 45 (2.8)	0.32 (0.10) @ 50 (3.2)	0.50 (0.15) @ 75 (4.7)	0.72 (0.22) @ 90 (5.7)	1.28 (0.39) @ 120 (7.6)	2.00 (0.61) @ 150 (9.5)	2.88 (0.88) @ 180 (11.4)
SG-33							
SG-43	0.20 (0.06) @ 70 (4.4)	0.35 (0.11) @ 92 (5.8)	0.55 (0.17) @ 115 (7.3)	0.55 (0.17) @ 115 (7.3)	1.42 (0.43) @ 1.42 (0.43)	2.20 (0.67) @ 230 (14.5)	3.15 (0.96) @ 276 (17.4)
SG-44							
SG-54	0.17 (0.05) @ 118 (7.4)	0.29 (0.09) @ 155 (9.8)	0.29 (0.09) @ 155 (9.8)	0.68 (0.21) @ 238 (15.0)	1.20 (0.37) @ 315 (19.9)	1.90 (0.58) @ 396 (25.0)	2.75 (0.84) @ 475 (30.0)
SG-64							
SG-55							
SG-65	0.23 (0.07) @ 187 (11.8)	0.41 (0.13) @ 250 (15.8)	0.67 (0.20) @ 315 (19.9)	0.95 (0.29) @ 375 (23.7)	1.70 (0.52) @ 500 (31.5)	2.65 (0.81) @ 625 (39.4)	2.65 (0.81) @ 625 (39.4)
SG-66							
SG-86	2.65 (0.81) @ 625 (39.4)	0.38 (0.12) @ 360 (22.7)	0.60 (0.18) @ 450 (28.4)	0.86 (0.26) @ 540 (34.1)	1.54 (0.47) @ 720 (45.4)	2.40 (0.73) @ 900 (56.8)	3.45 (1.05) @ 1080 (68.1)
SG-88							
SG-108	0.21 (0.06) @ 470 (29.7)	0.37 (0.11) @ 625 (39.4)	0.58 (0.18) @ 780 (49.2)	0.85 (0.26) @ 940 (59.3)	1.50 (0.46) @ 1250 (78.9)	2.30 (0.70) @ 1550 (97.8)	3.35 (1.02) @ 1870 (118.0)
SG-1010							
SG-1210	0.26 (0.08) @ 740 (46.7)	0.46 (0.14) @ 980 (61.8)	0.73 (0.22) @ 1230 (77.6)	1.03 (0.31) @ 1480 (93.4)	1.85 (0.56) @ 1960 (123.7)	2.92 (0.89) @ 2450 (154.6)	4.20 (1.28) @ 2940 (185.5)
SG-1212							
SG-1412	0.25 (0.08) @ 1080 (68.1)	0.44 (0.13) @ 1400 (88.3)	0.72 (0.22) @ 1750 (110.4)	1.02 (0.31) @ 2100 (132.5)	1.81 (0.55) @ 2800 (176.7)	2.80 (0.85) @ 3500 (220.8)	4.00 (1.22) @ 4200 (265.0)



Companion flanges not included.

DIMENSIONAL DATA SG														
MODEL	CONNECTION SIZE		STRAINER FREE AREA in ² (cm ²)	DIMENSIONS IN INCHES (MM)										WEIGHT
	SYSTEM	PUMP		A	B	C	D	E	F	G	H	I	J	lbs (kg)
SG-2515	2.5(64)	1.5(38)	45.6(298)	5.92 (150)	4.13 (105)	6.00 (152)	10.30 (263)	7.60 (193)	0.50 (13)	5.50 (140)	1.00 (25)	7.00 (178)	4.60 (115)	24.7 (11.2)
SG-22	2 (51)	2 (51)	34 (222)	4.50 (114)	3.07 (78)	4.50 (114)	8.50 (216)	5.71 (145)	0.50 (13)	4.75 (121)	1.00 (25)	6.00 (152)	6.00 (152)	26 (11.8)
SG-252	2.5 (64)	2 (51)	34 (222)	5.00 (127)	3.07 (78)	4.50 (114)	8.50 (216)	5.71 (145)	0.50 (13)	4.75 (121)	1.00 (25)	7.00 (178)	6.00 (152)	29 (13.2)
SG-32	3 (76)	2 (51)	34 (222)	5.50 (140)	3.07 (78)	4.50 (114)	8.50 (216)	5.71 (145)	0.50 (13)	4.75 (121)	1.00 (25)	7.50 (191)	6.00 (152)	31 (14.1)
SG-42	4 (102)	2 (51)	82 (535)	6.96 (177)	4.70 (119)	6.96 (177)	12.04 (306)	8.59 (218)	0.50 (13)	7.00 (178)	1.00 (25)	9.00 (229)	6.00 (152)	57.58 (26.1)
SG-2525	2.5 (64)	2.5 (64)	34 (222)	4.90 (124)	3.07 (78)	4.90 (124)	7.50 (191)	5.86 (149)	0.50 (13)	4.75 (121)	1.00 (25)	7.12 (181)	7.12 (181)	34 (15.4)
SG-325	3 (76)	2.5 (64)	34 (222)	5.50 (140)	3.07 (78)	4.90 (124)	7.50 (191)	5.86 (149)	0.50 (13)	4.75 (121)	1.00 (25)	7.50 (191)	7.12 (181)	35 (15.9)
SG-425	4 (102)	2.5 (64)	82 (535)	6.96 (177)	4.70 (119)	6.96 (177)	12.04 (306)	8.59 (218)	0.50 (13)	7.00 (178)	1.00 (25)	9.00 (229)	7.12 (181)	61.24 (27.8)
SG-33	3 (76)	3 (76)	44 (282)	5.40 (137)	3.63 (92)	5.40 (137)	9.88 (251)	7.00 (178)	0.75 (19)	5.50 (140)	1.00 (25)	7.81 (198)	7.81 (198)	45 (20.4)
SG-43	4 (102)	3 (76)	44 (282)	6.50 (165)	3.63 (92)	5.90 (150)	10.38 (264)	7.50 (191)	0.75 (19)	5.50 (140)	1.00 (25)	9.00 (229)	7.81 (198)	53 (24.0)
SG-63	6 (152)	3 (76)	158 (1012)	7.16 (202)	6.21 (158)	9.46 (240)	15.94 (405)	11.65 (296)	0.75 (19)	9.25 (235)	1.00 (25)	11.00 (279)	7.81 (198)	91.63 (41.6)
SG-44	4 (102)	4 (102)	79 (511)	6.50 (165)	4.19 (106)	6.50 (165)	11.75 (298)	8.13 (206)	0.75 (19)	7.00 (178)	1.25 (32)	9.00 (229)	9.00 (229)	72 (32.7)
SG-54	5 (127)	4 (102)	79 (511)	7.44 (189)	4.19 (106)	6.50 (165)	11.75 (298)	8.13 (206)	0.75 (19)	7.00 (178)	1.25 (32)	10.00 (254)	9.00 (229)	79 (35.8)
SG-64	6 (152)	4 (102)	79 (511)	8.03 (204)	4.19 (106)	7.50 (191)	12.75 (324)	9.13 (232)	0.75 (19)	7.00 (178)	1.25 (32)	11.00 (279)	9.00 (229)	87 (39.5)
SG-55	5 (127)	5 (127)	111 (719)	7.47 (190)	4.81 (122)	7.47 (190)	13.50 (343)	9.47 (241)	1.00 (25)	8.00 (203)	1.25 (32)	10.00 (254)	10.00 (254)	99 (44.9)
SG-65	6 (152)	5 (127)	111 (719)	8.00 (203)	4.81 (122)	7.47 (190)	13.50 (343)	9.47 (241)	1.00 (25)	8.00 (203)	1.25 (32)	11.15 (283)	10.00 (254)	103 (46.7)
SG-66	6 (152)	6 (152)	120 (775)	8.00 (203)	5.71 (145)	8.00 (203)	14.75 (375)	10.19 (259)	1.00 (25)	9.25 (235)	2.00 (51)	11.15 (283)	11.15 (283)	141 (63.9)
SG-86	8 (203)	6 (152)	120 (775)	9.00 (229)	5.71 (145)	10.00 (254)	16.75 (425)	12.19 (310)	1.00 (25)	9.25 (235)	2.00 (51)	13.50 (343)	11.15 (283)	180 (81.6)
SG-88	8 (203)	8 (203)	273 (1760)	8.93 (227)	7.00 (178)	10.28 (261)	18.75 (476)	13.42 (341)	1.00 (25)	12.25 (311)	2.00 (51)	13.50 (343)	13.50 (343)	213 (96.6)
SG-108	10 (254)	8 (203)	273 (1760)	10.93 (278)	7.00 (178)	12.78 (325)	21.25 (540)	15.92 (404)	1.00 (25)	12.25 (311)	2.00 (51)	16.00 (406)	13.50 (343)	246 (111.6)
SG-1010	10 (254)	10 (254)	538 (3474)	11.43 (290)	8.13 (207)	12.72 (323)	23.25 (591)	16.85 (428)	1.00 (25)	15.00 (381)	2.00 (51)	16.00 (406)	16.00 (406)	349 (158.3)
SG-1210	12 (305)	10 (254)	538 (3474)	13.00 (330)	8.13 (207)	15.72 (399)	26.25 (667)	19.85 (504)	1.00 (25)	15.00 (381)	2.00 (51)	19.00 (483)	16.00 (406)	390 (176.9)
SG-1212	12 (305)	12 (305)	753 (4861)	15.30 (389)	10.76 (273)	14.18 (360)	27.50 (699)	20.45 (519)	1.00 (25)	19.00 (483)	2.00 (51)	19.00 (483)	19.00 (483)	641 (290.7)
SG-1412	14 (356)	12 (305)	753 (4861)	16.00 (406)	10.76 (273)	14.18 (360)	27.50 (699)	20.45 (519)	1.00 (25)	19.00 (483)	2.00 (51)	21.00 (533)	19.00 (483)	637 (288.9)

Dimensions and weights are for reference only. Dimensions are inches (mm) and weights are lbs (kg).

23 BERTRAND AVENUE
TORONTO, ONTARIO
CANADA
M1L 2P3
+1 416 755 2291

BUFFALO

93 EAST AVENUE
NORTH TONAWANDA, NEW YORK
U.S.A.
14120-6594
+1 716 693 8813

BIRMINGHAM

HEYWOOD WHARF, MUCKLOW HILL
HALESOWEN, WEST MIDLANDS
UNITED KINGDOM
B62 8DJ
+44 (0) 8444 145 145

MANCHESTER

WOLVERTON STREET
MANCHESTER
UNITED KINGDOM
M11 2ET
+44 (0) 8444 145 145

BANGALORE

#59, FIRST FLOOR, 3RD MAIN
MARGOSA ROAD, MALLESWARAM
BANGALORE, INDIA
560 003
+91 (0) 80 4906 3555

SHANGHAI

NO. 1619 HU HANG ROAD, XI DU TOWNSHIP
FENG XIAN DISTRICT, SHANGHAI
P.R.C.
201401
+86 21 3756 6696

SÃO PAULO

RUA JOSÉ SEMIÃO RODRIGUES AGOSTINHO,
1370 GALPÃO 6
EMBU DAS ARTES
SAO PAULO, BRAZIL
+55 11 4781 5500

ARMSTRONG FLUID TECHNOLOGY
ESTABLISHED 1934

ARMSTRONGFLUIDTECHNOLOGY.COM

MAKING
ENERGY
MAKE
SENSE™