

BARNES®

INSTALLATION INSTRUCTIONS

Wide Angle Level Controls w/Piggy-Back Plug

Mechanical Level Controls: Snap Action

PART NUMBER	VOLTAGE & PHASE	SWITCH RATING	TEMPERATURE RATING	CONTACTS	INSTALLATION
101765	115V, 1PH	13 AMPS	140°F (60°C) - STD	Open	Pipe Mounted
090268	230V, 1PH	13 AMPS	140°F (60°C) - STD	Open	Pipe Mounted
090269	115V, 1PH	15 AMPS	200°F (93°C) - Hi Temp	Open	Pipe Mounted
090270	230V, 1PH	15 AMPS	200°F (93°C) - Hi Temp	Open	Pipe Mounted

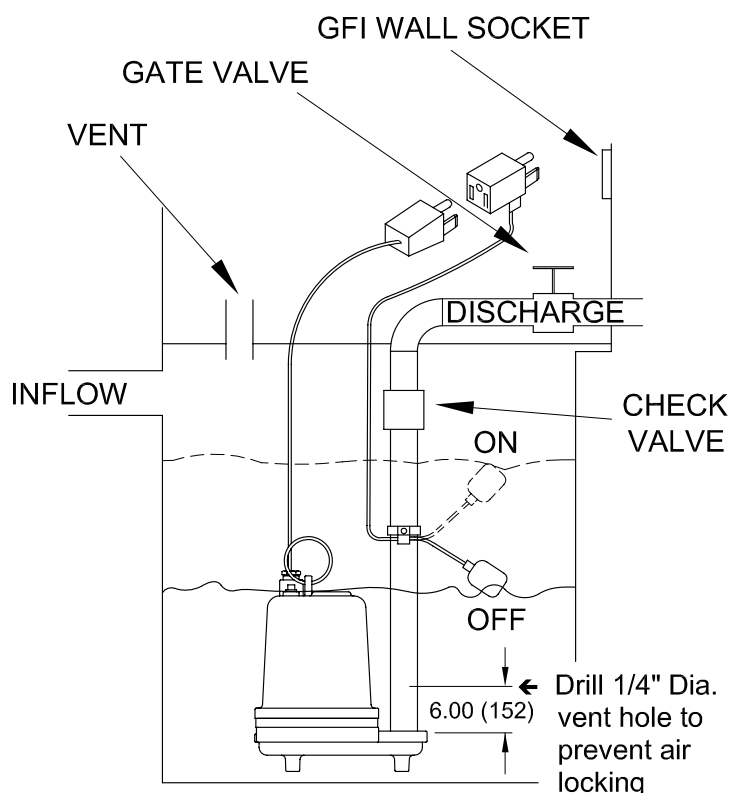


TYPICAL INSTALLATION

GENERAL COMMENTS:

1. Never work in sump with power on.
2. Level Controls are factory set for a pumping differential of 8" (203mm). If that is the pumping range desired, insert the hose clamp through the two slots in the pipe/cable clamp, circle the discharge pipe with the hose clamp, feed the end of the hose clamp through the screw on the other end of the hose clamp and tighten with screwdriver. Be certain that the Level Control cannot hang up or foul in its swing from "ON" to "OFF". Also make certain the pump impeller is still submerged when the Level Control is in the "OFF" mode.
3. If a higher pump differential is needed, consult Table 1, for tether length needed. Loosen the screw on the pipe/cable clamp, measure the cable tether length from the neck of the float housing to the bottom of the pipe/cable clamp. Tighten the screw at the desired tether length and attach to the pipe.
4. Plug the unit into the wall receptacle, then plug the pump into the piggy-back plug. One cycle of operation should be observed, so that any potential problems can be corrected.

IMPORTANT NOTE: Do not use the Level Control in gasoline, volatiles, or other combustibles.



CRANE®

A Crane Co. Company

PUMPS & SYSTEMS

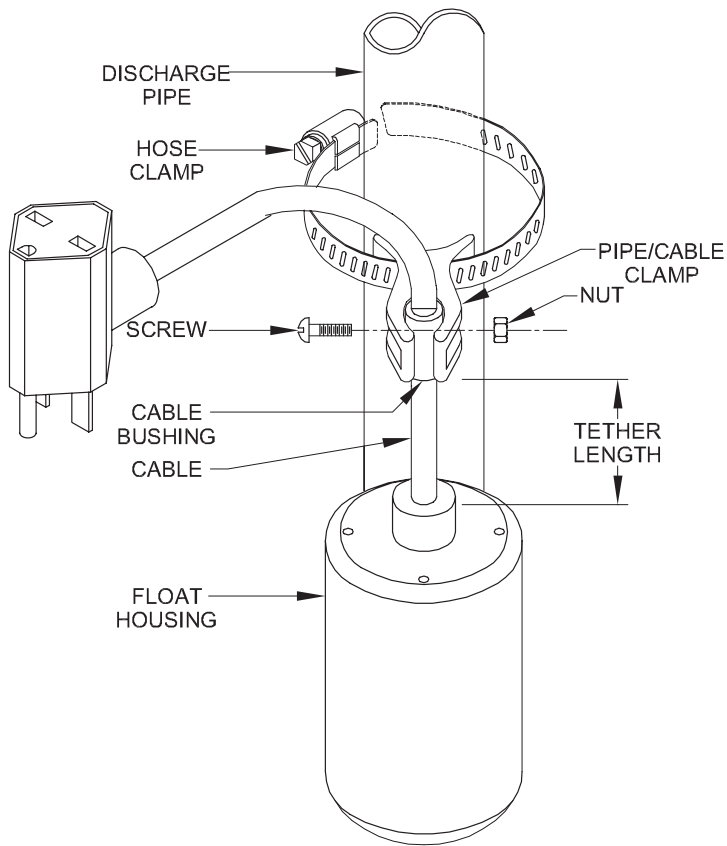
420 Third Street
Piqua, Ohio 45356
Phone: (937) 778-8947
Fax: (937) 773-7157
www.cranepumps.com

83 West Drive, Bramton
Ontario, Canada L6T 2J6
Phone: (905) 457-6223
Fax: (905) 457-2650

Form No. 099803-Rev. D

INSTALLATION INSTRUCTIONS

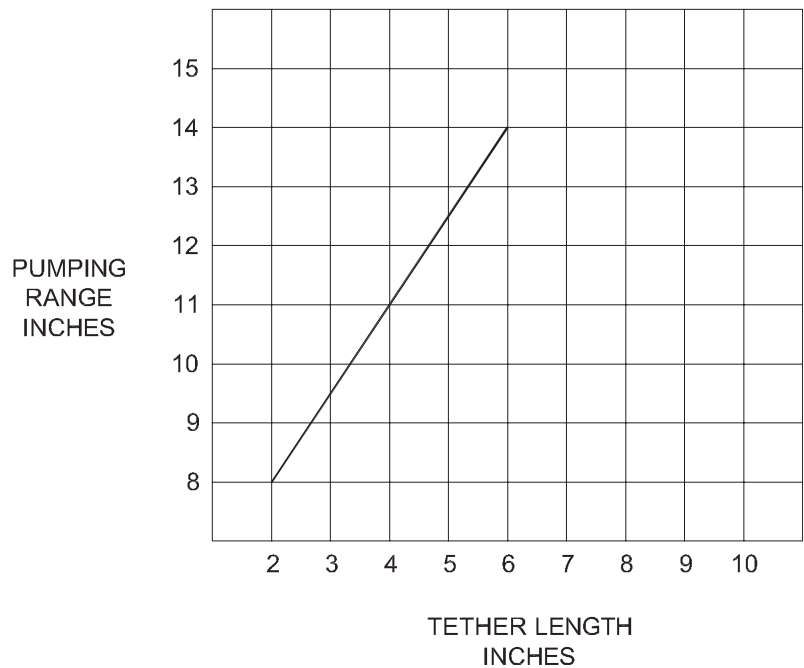
Wide Angle Level Controls w/Piggy-Back Plug



TETHER ADJUSTMENT:

If a higher pumping range is desired, consult Table 1, for the tether length needed. Loosen the screw on the pipe/cable clamp, measure the cable tether length from the neck of the float housing to the bottom of the pipe/cable clamp. Tighten the screw at the desired tether length and attach to the pipe as described.

TABLE 1



WARNING!

Products Returned Must Be Cleaned, Sanitized, Or Decontaminated As Necessary Prior To Shipment, To Insure That Employees Will Not Be Exposed To Health Hazards In Handling Said Material. All Applicable Laws And Regulations Shall Apply.

Other brand and product names are trademarks or registered trademarks of their respective holders.

® Barnes is a registered trademark of Crane Pumps & Systems, Inc.

1996, 2002, 5/06, 9/06

Alteration Rights Reserved