

Product information presented here reflects conditions at time of publication. Consult factory regarding discrepancies or inconsistencies.

**PUMP COMPANY**

Zoeller Family of Water Solutions™

MAIL TO: P.O. BOX 16347 • Louisville, KY 40256-0347  
 SHIP TO: 3649 Cane Run Road • Louisville, KY 40211-1961  
 (502) 778-2731 • 1 (800) 928-PUMP • FAX (502) 774-3624

visit our web site:  
[www.zoeller.com](http://www.zoeller.com)

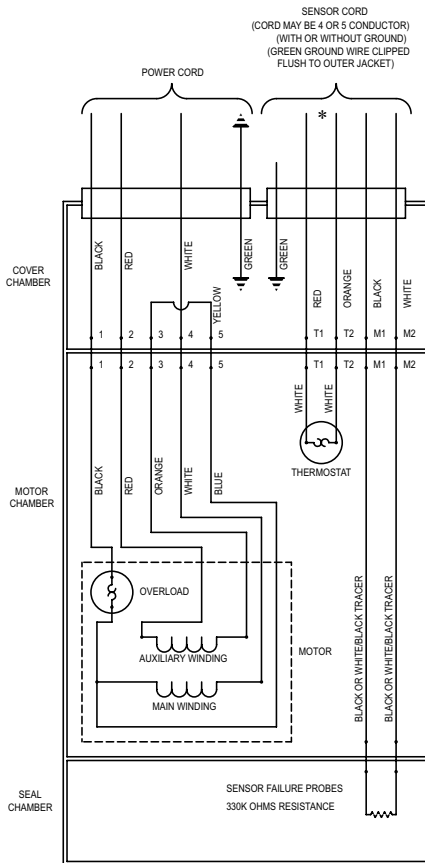
**REPLACEMENT PARTS LIST  
 FOR GRINDER MODELS:**

- E841 230V 1 PHASE**
- I841 200V 1 PHASE**
- F841 230V 3 PHASE**
- G841 460V 3 PHASE**
- J841 200V 3 PHASE**
- BA841 575V 3 PHASE**

**TO ORDER REPLACEMENT PARTS:**

PLEASE FURNISH THE  
 FOLLOWING INFORMATION:

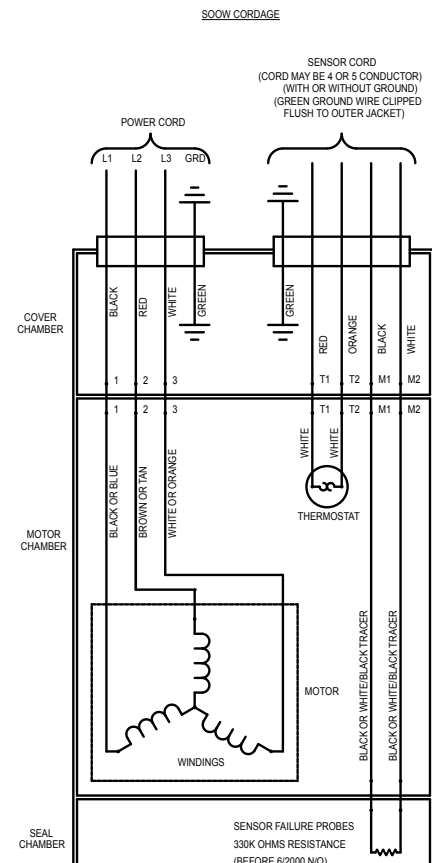
- Model Number.
- Part Number of Pump.
- Part Number and Description of part.



\*Thermostat Optional

WIRING DIAGRAM FOR MODELS  
 "E841" All Revisions  
 "I841" All Revisions  
 "F841" All Revisions  
 "J841" All Revisions  
 "BA841" All Revisions  
 12/03 thru Current

016129



WIRING DIAGRAM FOR MODELS  
 "F841" All Revisions  
 "G841" All Revisions  
 "J841" All Revisions  
 "BA841" All Revisions  
 12/03 thru Current

008752

**REPLACEMENT PARTS LIST FOR MODELS "E841" and "I841".**

See back page for illustration.

REF. NO.	DESCRIPTION	QTY.	NOTES	MODELS:			
				E841-A	E841-B	I841-A	I841-B
				12/03 thru 8/06	9/06 thru Current	12/03 thru 8/06	9/06 thru Current
1	Cover & Cord 200/230V/1PH	1	2	016135	016135	016135	016135
2	• Seal, SQ-Ring Cover	1		007773	007773	007773	007773
3	• Seal, Thru Wall Term.	9		003402	003402	003402	003402
4	Housing, Mtr. & Str. 1Ph/GE	1	1	010266	010266	010267	010267
5	• Oil, Dielectric (57 OZ Can)	1		009051	009051	009051	009051
6	Rotor Asm. 1Ph/GE	1		010269	010269	010269	010269
7	Ring, Snap-5100-100 Truarc	1		007769	007769	007769	007769
8	Key	1		011711	011711	011711	011711
9	Cordage Term. & Seal/20'/18-2 SOW-A/MS	1	2	009053	009053	009053	009053
10	• Seal, Cord-Asm./MS	1	2	011064	011064	011064	011064
11	Cordage Term. & Seal/20'/Power	1	2	015828	015828	015828	015828
12	• Seal, Cord-Asm. & Strain Relief	1	2	015634	015634	015634	015634
13	Case & Seal	1		015830	015830	015830	015830
14	• Plug, Test-Brass	3		015023	015023	015023	015023
15	• Bearing, Radial .4724 ID	1		006703	006703	006703	006703
16	• Bearing, Angular Contact	1		007765	007765	007765	007765
17	• Seal, SQ-Ring Adapter	1		007771	007771	007771	007771
18	• Sensor, Moisture Asm.	1		007770	007770	007770	007770
19	Adapter Asm. Grinder	1		009055	009055	009055	009055
20	• Oil, Dielectric (11 OZ Can)	1		009056	009056	009056	009056
21	• Seal Asm., Shaft	2		007763	007763	007763	007763
22	• Seal, SQ-Ring Seal Plate	1		007772	007772	007772	007772
23	Plate, Seal-Mach.	1		007757	007757	007757	007757
24	Impeller-Mach.	1		015801	015801	015801	015801
25	Housing, Pump-Mach.	1		015800	015800	015800	015800
26	Cutter & Disc Asm.	1		016136	018604	016136	018604
27	Shim Set	1		012632	012632	012632	012632
28	Guard, Cutter-Plastic	1		008528	008528	008528	008528
29	Handle-SS/SQ Guide Rail/(Grinder)	1		016801	016801	016801	016801
30	Wire Asm.-P-P (1) Wire	1		016134	016134	016134	016134
31	Resistor	1		013740	013740	013740	013740
32	• Screw, #6-32 x .25RHM SL TC STLGR	1		001877	001877	001877	001877
33	• Screw, .313-18 x 1 HH CAP SS	2		002608	002608	002608	002608
34	• Screw, .313-18 x 1.25 HH Cap-SS	12		001908	001908	001908	001908
35	• Screw, #10-24 x .625" SH Cap SS	4		007774	007774	007774	007774
36	• Screw, .25-20 x .75 LG HH SS (Nylock Pre-Coat 80)	1		009545	N/A	009545	N/A
	• Screw, .25-20 x 1 LG HH SS (Nylock Pre-Coat 80)			N/A	018602	N/A	018602
37	• Screw, .25-20 x .75 SH CAP SS	3		007768	007768	007768	007768
38	• Screw, #10-24 x .875 FLT SH CAP SS	3		007761	007761	007761	007761
39	• Washer, Lock .312 ID	14		006402	006402	006402	006402
40	• Washer-Retaining	1		008533	008533	008533	008533
41	• Washer-Flat SS	2		008773	008773	008773	008773
42	• Washer-Flat SS .25 Standard	3		004480	004480	004480	004480
43	Disc, Cutter	1		010407	010407	010407	010407
44	Cutter & Shim Asm / 3 Blase / 0.75" Screw	1		019695	N/A	019695	N/A
	Cutter & Shim Asm / 3 Blade / 1" Screw	1		N/A	019696	N/A	019696
□	Rebuild Kit	1		016806	018601	016806	018601

• Items included in Rebuild Kit.

□ Not Shown in Illustration.

**NOTE:**

- 1) Housing Mtr & Stator (Item 4) is preassembled at the factory and must be replaced as a unit. Stator is permanently attached to the Motor Housing. Plug (Item 14); Seal, Thru WallTerm. (Item 3) are replaceable.
- 2) If an "X" follows Model No., or Date Mfg. On ID tag, consult factory for ordering of this part.
- 3) See FM0160 Parts Price Sheet for listing of parts prices.
- 4) "NA" indicates not applicable.

# REPLACEMENT PARTS LIST FOR MODELS "J841", "F841", "G841", "BA841".

See back page for illustration.

REF. NO.	DESCRIPTION	QTY.	NOTES	MODELS:		J841-A	J841-B	F841-A	F841-B	G841-A	G841-B	BA841-A	BA841-B
				12/03 thru 8/06	9/06 thru Current	12/03 thru 8/06	9/06 thru Current	12/03 thru 8/06	9/06 thru Current	12/03 thru 8/06	9/06 thru Current		
1	Cover & Cord 200/230/460/575V/3PH	1	2	015827	015827	015827	015827	015827	015827	015827	015827	015827	015827
2	• Seal, SQ-Ring Cover	1		007773	007773	007773	007773	007773	007773	007773	007773	007773	007773
3	• Seal, Thru Wall Term.	9		003402	003402	003402	003402	003402	003402	003402	003402	003402	003402
4	Housing, Mtr. & Str. 3Ph/GE	1	1	010265	010265	010263	010263	010264	010264	010264	010264	010670	010670
5	• Oil, Dielectric (67 OZ Can)	1		009064	009064	009064	009064	009064	009064	009064	009064	009064	009064
6	Rotor Asm. 3Ph/GE	1		010268	010268	010268	010268	010268	010268	010268	010268	010268	010268
7	Ring, Snap-5100-100 Truarc	1		007769	007769	007769	007769	007769	007769	007769	007769	007769	007769
8	Key	1		011711	011711	011711	011711	011711	011711	011711	011711	011711	011711
9	Cordage Term. & Seal/20/18-5 SOW-AMS & THRML	1	2	012928	012928	012928	012928	012928	012928	012928	012928	012928	012928
10	• Seal, Cord-Asm./MS & THRML	1	2	012953	012953	012953	012953	012953	012953	012953	012953	012953	012953
11	Cordage Term. & Seal/20/Power	1	2	015828	015828	015828	015828	015828	015828	015828	015828	015828	015828
12	• Seal, Cord-Asm. & Strain Relief	1	2	015634	015634	015634	015634	015634	015634	015634	015634	015634	015634
13	Case & Seal	1		015830	015830	015830	015830	015830	015830	015830	015830	015830	015830
14	• Plug, Test-Brass	3		015023	015023	015023	015023	015023	015023	015023	015023	015023	015023
15	• Bearing, Radial .4724 ID	1		006703	006703	006703	006703	006703	006703	006703	006703	006703	006703
16	• Bearing, Angular Contact	1		007765	007765	007765	007765	007765	007765	007765	007765	007765	007765
17	• Seal, SQ-Ring Adapter	1		007771	007771	007771	007771	007771	007771	007771	007771	007771	007771
18	• Sensor, Moisture Asm.	1		007770	007770	007770	007770	007770	007770	007770	007770	007770	007770
19	Adapter Asm. Grinder	1		009055	009055	009055	009055	009055	009055	009055	009055	009055	009055
20	• Oil, Dielectric (11 OZ Can)	1		009056	009056	009056	009056	009056	009056	009056	009056	009056	009056
21	• Seal Asm., Shaft	2		007763	007763	007763	007763	007763	007763	007763	007763	007763	007763
22	• Seal, SQ-Ring Seal Plate	1		007772	007772	007772	007772	007772	007772	007772	007772	007772	007772
23	Plate, Seal-Mach.	1		007757	007757	007757	007757	007757	007757	007757	007757	007757	007757
24	Impeller-Mach.	1		015801	015801	015801	015801	015801	015801	015801	015801	015801	015801
25	Housing, Pump-Mach.	1		015800	015800	015800	015800	015800	015800	015800	015800	015800	015800
26	Cutter & Disc Asm.	1		016136	018604	016136	018604	016136	018604	016136	018604	016136	018604
27	Shim Set	1		012632	012632	012632	012632	012632	012632	012632	012632	012632	012632
28	Guard, Cutter-Plastic	1		008528	008528	008528	008528	008528	008528	008528	008528	008528	008528
29	Handle-SS/SQ Guide Rail/(Grinder)	1		016801	016801	016801	016801	016801	016801	016801	016801	016801	016801
30	Wire Asm.-P-P (1) Wire	1		016134	016134	016134	016134	016134	016134	016134	016134	016134	016134
31	Resistor	1		013740	013740	013740	013740	013740	013740	013740	013740	013740	013740
32	• Screw, #6-32 x .25RHM SL TC STLGR	1		001877	001877	001877	001877	001877	001877	001877	001877	001877	001877
33	• Screw, .313-18 x 1 HH CAP SS	2		002608	002608	002608	002608	002608	002608	002608	002608	002608	002608
34	• Screw, .313-18 x 1.25 HH Cap-SS	12		001908	001908	001908	001908	001908	001908	001908	001908	001908	001908
35	• Screw, #10-24 x .625" SH Cap SS	4		007774	007774	007774	007774	007774	007774	007774	007774	007774	007774
36	• Screw, .25-20 x .75 LG HH SS (Nylock Pre-Coat 80)	1		009545	N/A	009545	N/A	009545	N/A	009545	N/A	009545	N/A
	• Screw, .25-20 x 1 LG HH SS (Nylock Pre-Coat 80)			N/A	018602	N/A	018602	N/A	018602	N/A	018602	N/A	018602
37	• Screw, .25-20 x .75 SH CAP SS	3		007768	007768	007768	007768	007768	007768	007768	007768	007768	007768
38	• Screw, #10-24 x .875 FLT SH CAP SS	3		007761	007761	007761	007761	007761	007761	007761	007761	007761	007761
39	• Washer, Lock .312 ID	14		006402	006402	006402	006402	006402	006402	006402	006402	006402	006402
40	• Washer-Retaining	1		008533	008533	008533	008533	008533	008533	008533	008533	008533	008533
41	• Washer Flat SS	2		008773	008773	008773	008773	008773	008773	008773	008773	008773	008773
42	• Washer-Flat SS .25 Standard	3		004480	004480	004480	004480	004480	004480	004480	004480	004480	004480
43	Disc, Cutter	1		010407	010407	010407	010407	010407	010407	010407	010407	010407	010407
44	Cutter & Shim Asm / 3 Blase / 0.75" Screw	1		019695	N/A	019695	N/A	019695	N/A	019695	N/A	019695	N/A
	Cutter & Shim Asm / 3 Blade / 1" Screw	1		N/A	019696	N/A	019696	N/A	019696	N/A	019696	N/A	019696
▣	Rebuild Kit	1		016807	018605	016807	018605	016807	018605	016807	018605	016807	018605

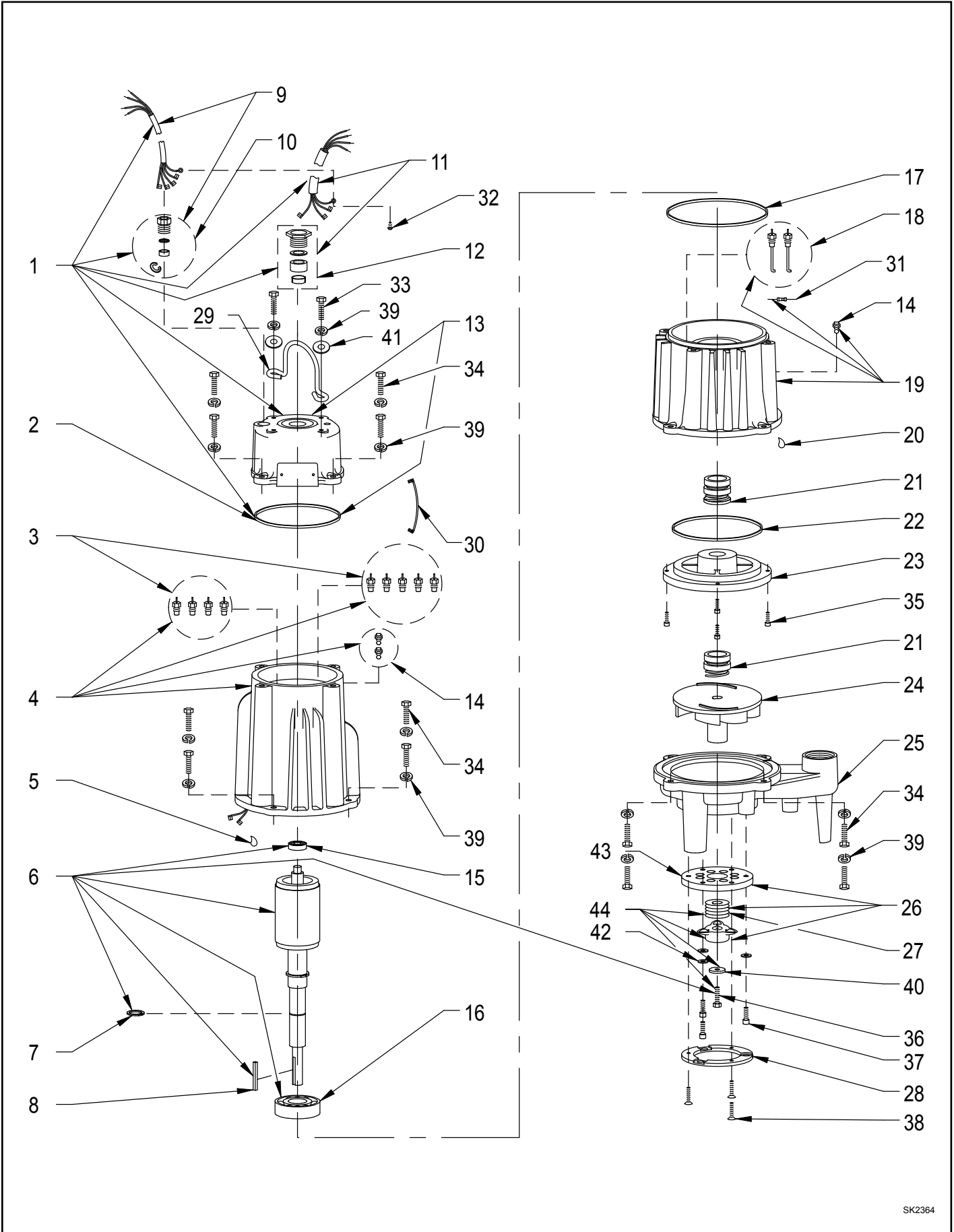
• Items included in Rebuild Kit.

▣ Not Shown in Illustration.

**NOTE:**

- 1) Housing Mtr & Stator (Item 4) is preassembled at the factory and must be replaced as a unit. Stator is permanently attached to the Motor Housing. Plug (Item 14); Seal, Thru WallTerm. (Item 3) are replaceable.
- 2) If an "X" follows Model No., or Date Mfg. On ID tag, consult factory for ordering of this part.
- 3) See FM0160 Parts Price Sheet for listing of parts prices.
- 4) "NA" indicates not applicable.

# REPLACEMENT PARTS ILLUSTRATION FOR 841 - ALL MODELS



SK2364