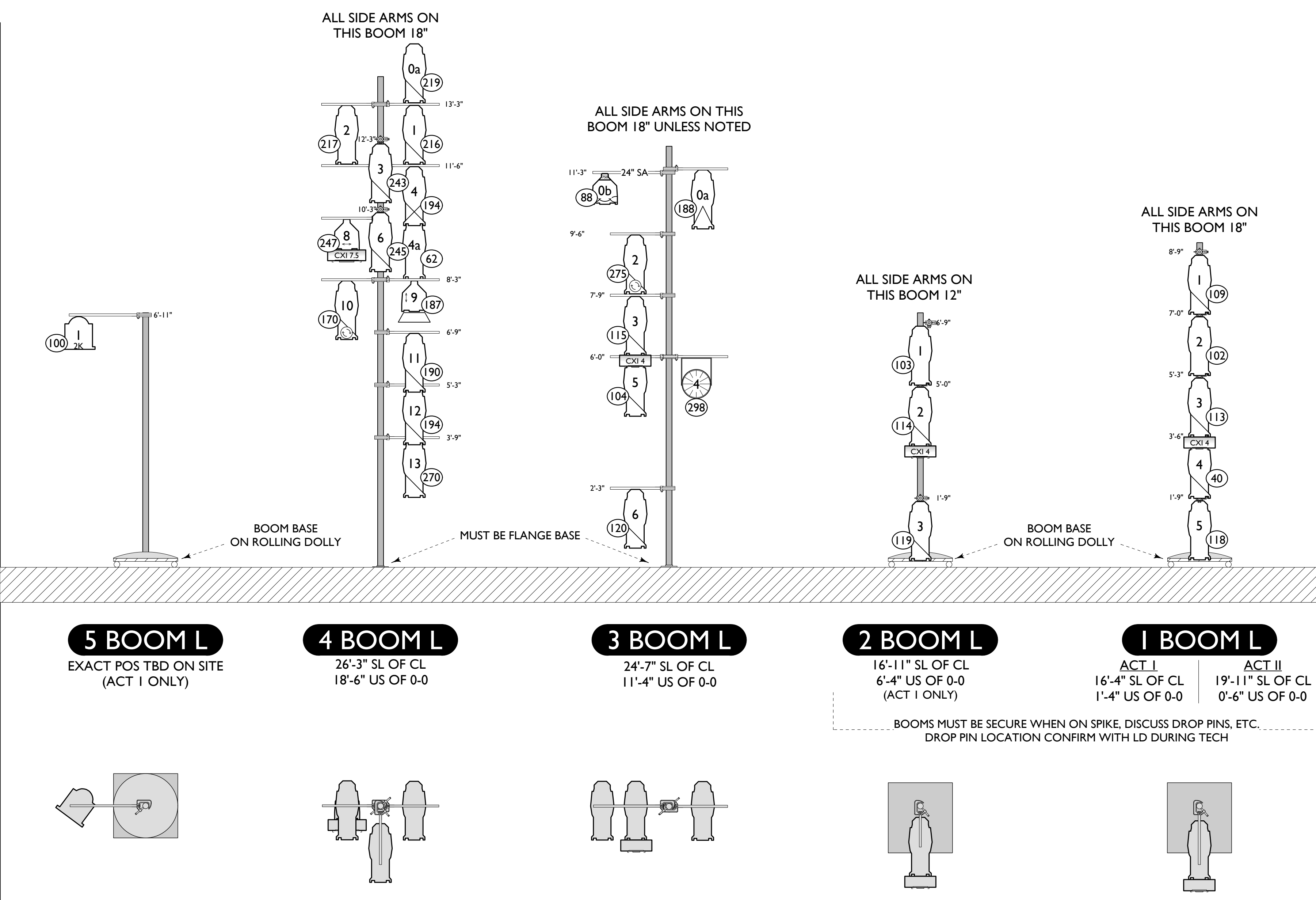
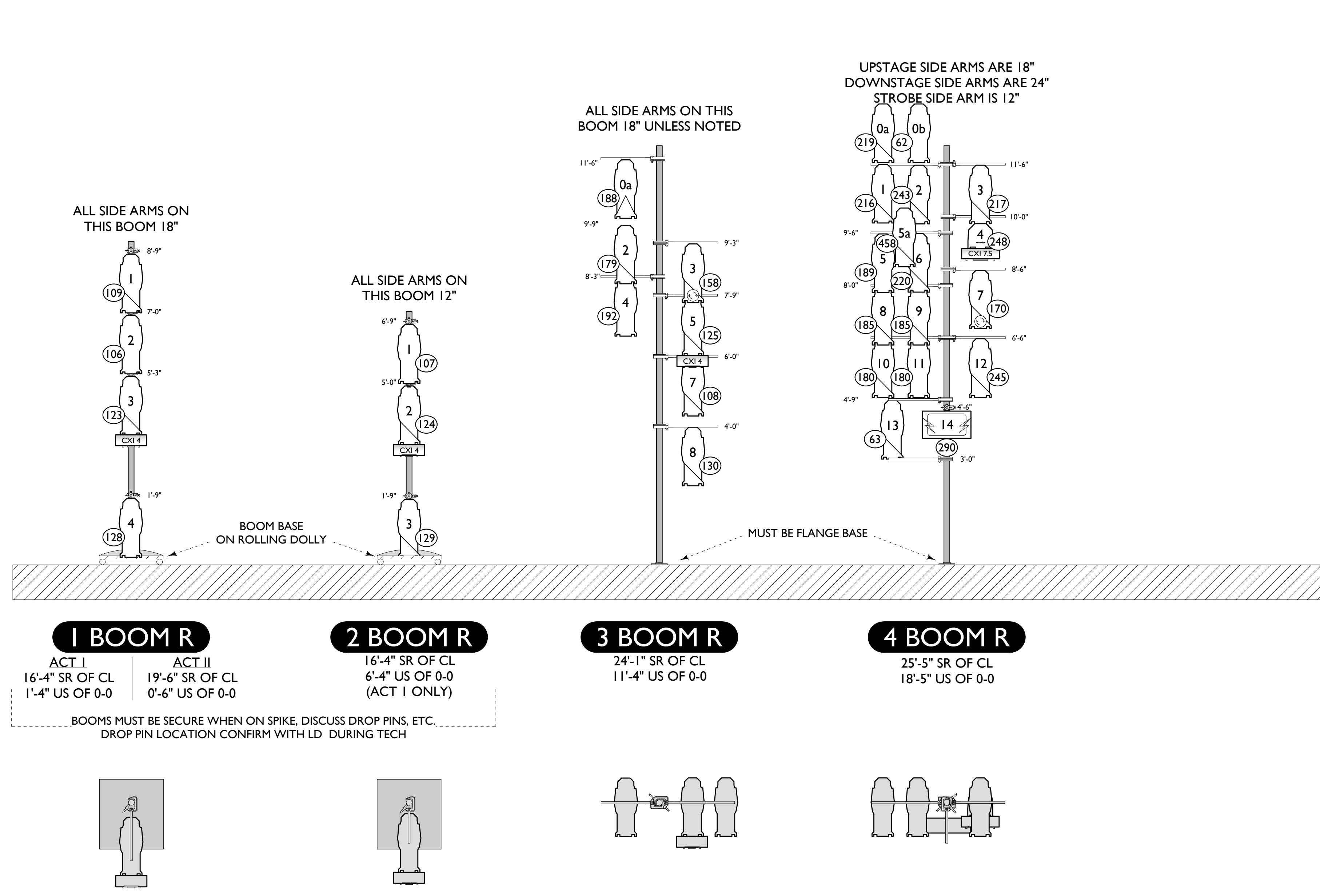


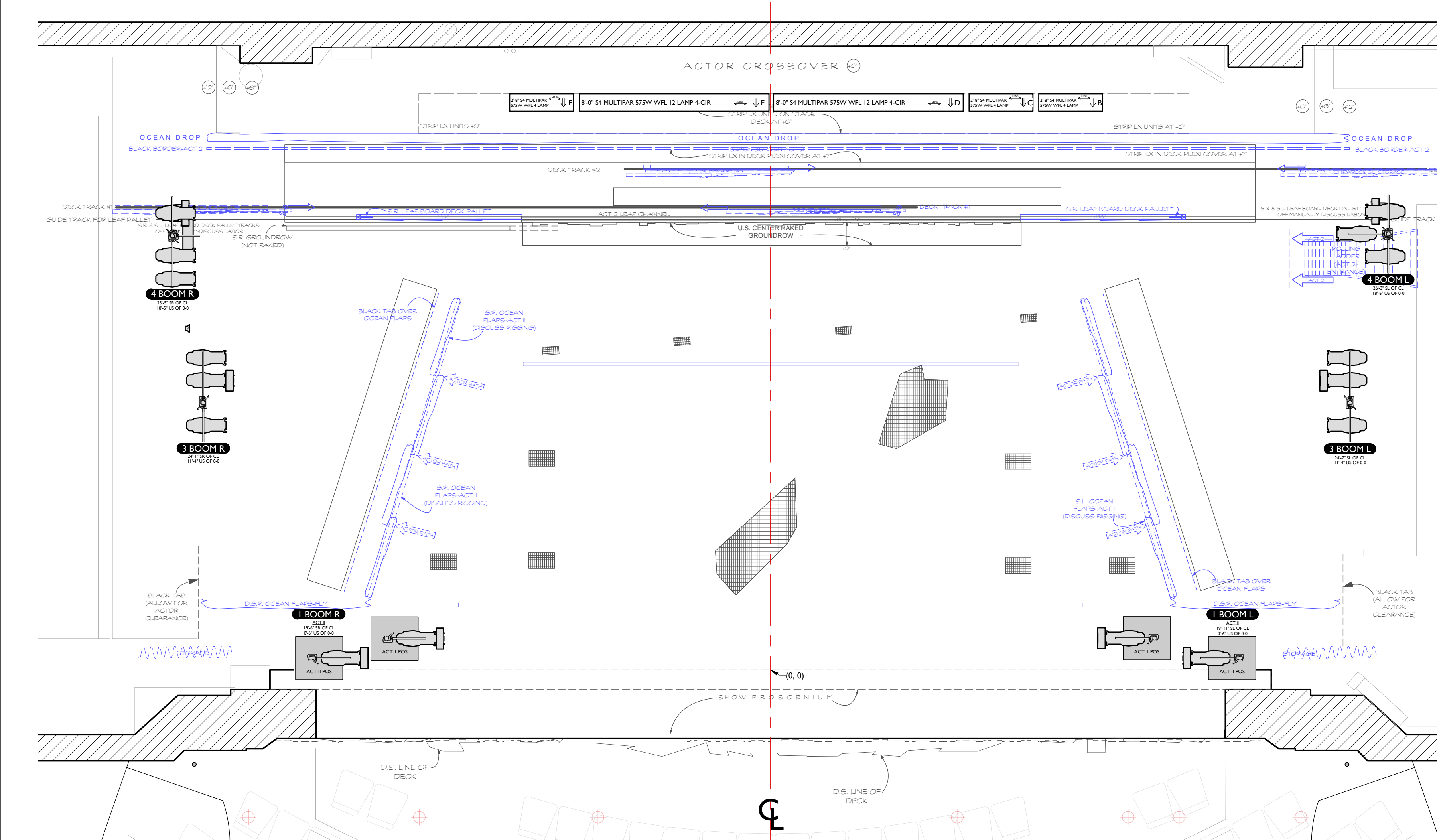
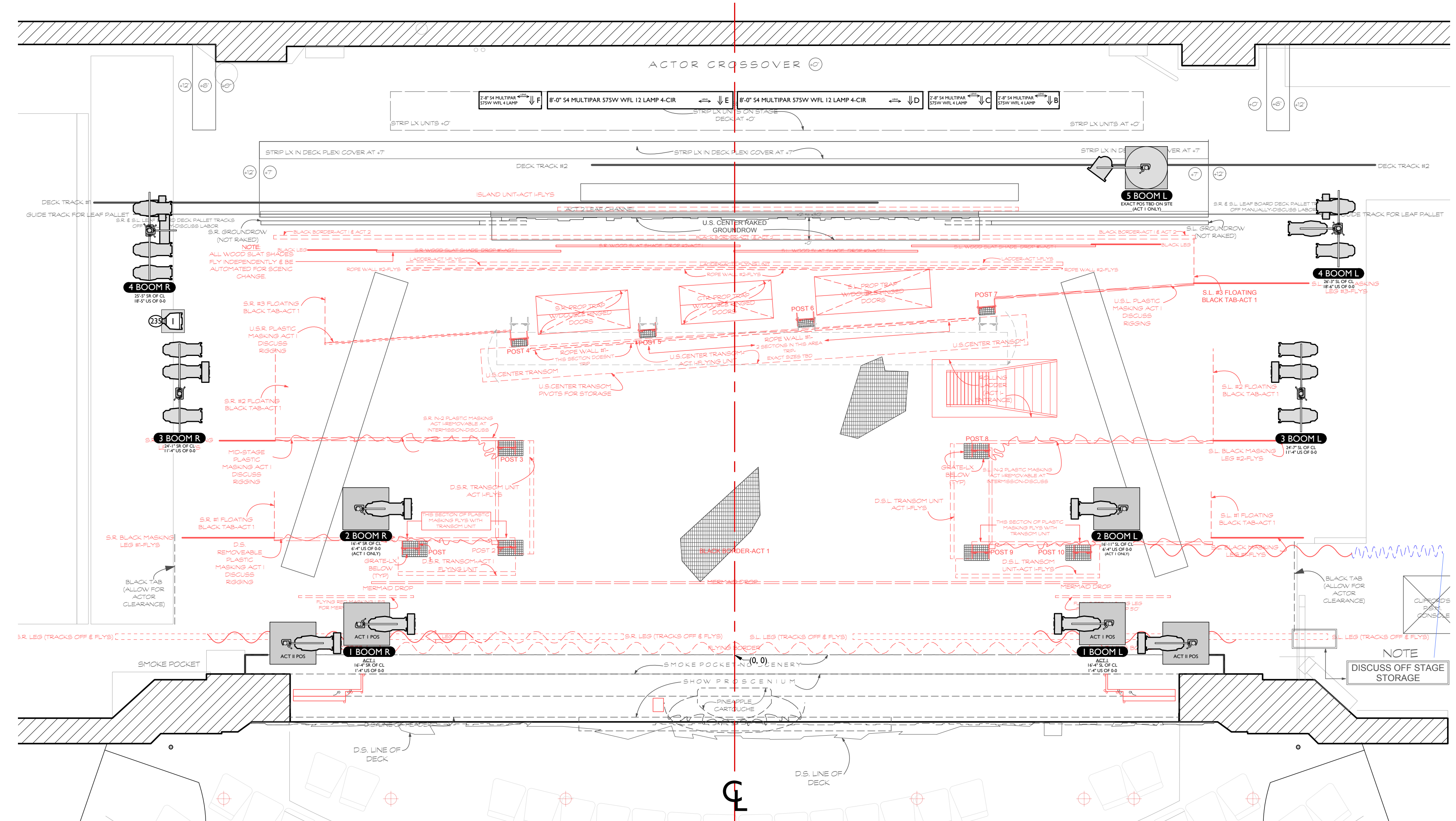
STAGE RIGHT  
DS

ALL DIMENSIONS ARE TO THE SIDE ARM  
ALL TRIMS AND DIMENSIONS FROM SHOW DESK UNLESS STATED OTHERWISE  
TRIMS TO LIGHTS ON ROLLING DOLLY ARE MEASURED FROM BOTTOM OF PIPE  
ALL BOOM PLACEMENT DIMS FROM UPSTAGE EDGE OF SMOKE TO CENT OF BOOM PIPE

STAGE LEFT  
DS



KEY	
	SOURCE 4 5' 750w
	SOURCE 4 10' 575w
	SOURCE 4 14' 575w
	SOURCE 4 19' 575w
	SOURCE 4 26' 575w
	SOURCE 4 36' 575w
	SOURCE 4 50' 575w
	SOURCE 4 70' 575w
	SOURCE 4 MFL 575w
	SOURCE 4 WFL 575w
	SOURCE 4 PARnel 750w
	8' FRESNEL 1kw
	8' FRESNEL 2kw
	PAR16 NAR 100w
	PAR16 MED 100w
	PAR16 WIDE 100w
	MINI-10 500w
	PRACTICAL
	ATOMIC 3K STROBE
	CK COLORBLAST 12 TR
	BOWENS FAN
	VARI-LITE VLIK AS 575w
	VARI-LITE VLIK TS 575w
	ALPHA SPOT 1200 1.2kw
	STUDIO COLOR CMY 575w
	SOURCE 4 14' AUTOYOKO 750w
	CONFETTI BOX
	WYBRON CXI
	WYBRON COLORAM
	DOUBLE ROTATOR DMX
	DROP IN IRIS
	BARN DOORS
	750 LAMP
	UNIT #12
	CH #45



FINAL		5/2/12
	UPDATES (8/9/12)	2/27/12
	UPDATES (FLYING STRIPS)	2/25/12
	UPDATES (4E RESTORE)	2/22/12 PM
	UPDATES (4E BARRELS)	2/22/12
	CUTS FOR DIMMING	2/14/12
	FIRST SUBMIT	2/10/12

THIS DRAWING REPRESENTS VISUAL CONCEPTS AND CONSTRUCTION SUGGESTIONS ONLY.

The Designer is not responsible for the structural or electrical appropriateness of the design, and will not assume responsibility for improper engineering, construction, handling, or use. All materials and construction must comply with the most stringent applicable Federal and Local Fire Safety, Energy, and Environmental Codes.

THIS DRAWING REPRESENTS A LIGHTING DESIGN THAT IS WHOLLY OWNED BY CORY PATTAK. ANY USE OR DISTRIBUTION OF THIS DRAWING OTHER THAN AS REQUIRED FOR PRODUCTIONS OF THE BROADWAY PRODUCTION OF PETER AND THE STAR CATCHER IS EXPRESSLY PROHIBITED AND IS A VIOLATION OF COPYRIGHT LAWS IN THE US AND INTERNATIONALLY. ANY UNAUTHORIZED DISTRIBUTION OF THIS DRAWING WILL BE A VIOLATION OF THE LAWS OF THE UNITED STATES OF AMERICA. THIS DRAWING AND THE LIGHTING DESIGN ITALY, © 2012 BY CROITER. ALL RIGHTS RESERVED.

LD: #605

**PETER AND THE STAR CATCHER**

BROOKS ATKINSON THEATRE  
NEW YORK CITY

DIRECTOR: ALEX TIMBERS & ROGER REES  
SCENIC DESIGN: DONALD WERLE  
LIGHTING DESIGN: JEFF CROITER  
ASSOCIATE LIGHTING DESIGN: JOEL SILVER  
ASSISTANT LIGHTING DESIGN: CORY PATTAK  
PRODUCTION ELECTRICIAN: BRIAN MCGARTY

SIDE LIGHT	
SCALE: 1/2" = 1'-0"	EXCEPT WHERE NOTED
DATE: 5/2/12	PLATE
DRAWN: CP	3 of 5

ACT I BOOM PLACEMENT  
NOT TO SCALE

ACT II BOOM PLACEMENT  
NOT TO SCALE