

JEANETTE OI-SUK YEW
LIGHTING DESIGNER

JEANETTE@JEANETTEYEW.COM
JEANETTEYEW.COM

THIS DRAWING AND ALL RELATED PAPERWORK, DESIGN CONCEPTS, AND THE
REGULATORY DESIGN IS A CREATING DESIGN THAT IS UNLAWFULLY OWNED BY
JEANETTE OI-SUK YEW AND ATTEMPT TO USE, REPRODUCE, OR OTHERWISE
FOR THE DRAWING UNDER THE DESIGNER'S NAME FOR THE PUBLIC THEATRE
AND PRODUCTION OF CULLD WATTAH IN THE MARTINSON THEATRE, IS
A VIOLATION OF THE DESIGNER'S RIGHTS AND THE LIGHTING DESIGNER'S RIGHTS
AND INTERNATIONALLY. THIS DRAWING AND THE LIGHTING DESIGNER'S RIGHTS
© 2021 JEANETTE OI-SUK YEW. ALL RIGHTS RESERVED.

Please recycle this paper.

DISCLAIMER

This drawing represents visual concepts and construction suggestions only. It does
not replace the knowledge and advice of a licensed structural engineer. The designer
does not warrant, in any way, the accuracy of this information and shall not be
responsible for discrepancies between this document and the existing conditions. The
designer will not assume responsibility for improper engineering, construction,
handling or use of this lighting equipment.

INSTRUMENT KEY



14 DEG ETC S4 @750w/115v

19 DEG ETC S4 @750w/115v

26 DEG ETC S4 @750w/115v

36 DEG ETC S4 @750w/115v

50 DEG ETC S4 @750w/115v

70 DEG ETC S4 @750w/115v

26 DEG PROLIGHTS ECLIPSE FS
200w MODE: 13 CH

36 DEG PROLIGHTS ECLIPSE FS
200w MODE: 13 CH

50 DEG PROLIGHTS ECLIPSE FS
200w MODE: 13 CH

70 DEG PROLIGHTS ECLIPSE FS
200w MODE: 13 CH

MFL ETC S4 PAR @ 750w/115v

WFL ETC S4 PAR @ 750w/115v

XWFL ETC S4 PAR @ 750w/115v

PAR36 TRACKLIGHT WITH
WIDE FLOOD PAR 36 INCANDESCENT LAMP

PAR 16 BIRDIE @ 100w/120v

ADJ H20 DMX IR 27 DEG
80w MODE: STANDARD DMX

COLORFORCE II-12
440w MODE: 144 MULTICHANNEL RGBA
(12 CELLS)

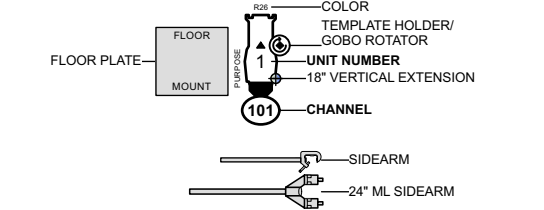
COLORFORCE II-12
115w MODE: RGBA x1 MULTICHANNEL
STROBE ON (4 CELLS)

COLORFORCE II-12
120w MODE: 4 RGBA MULTICHANNEL
(2 CELLS)

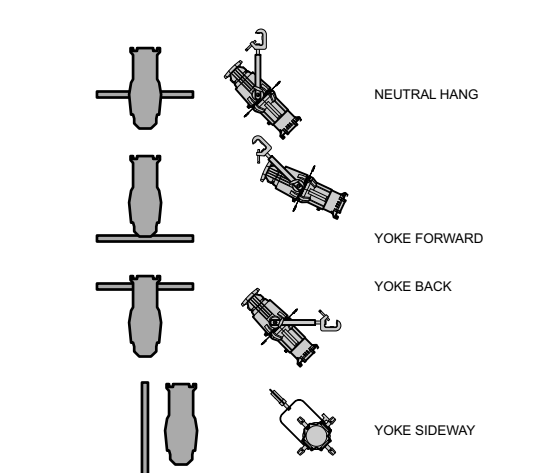
RGBW LED TAPE
SPEC TBD SEE DETAIL

PRACTICAL
SPEC TBD SEE DETAIL

TYPICAL NOTATION



HANG GUIDE



THE PUBLIC THEATRE PRESENTS
culld wattah

by Erika Dickerson-Despenza
directed by Candis C. Jones



MARTINSON THEATRE
NEW YORK CITY, NY

PRODUCED BY
THE JOSEPH PAPP PUBLIC THEATRE
DIRECTED BY CANDIS C. JONES
SCENIC DESIGN BY ADAM RIGG
COSTUME DESIGN BY KARA HARBON
LIGHTING DESIGN BY JEANETTE OI-SUK YEW
SOUND DESIGN BY SHAWN REIKI ZAFAR
HAIR, WIGS, MAKE-UP BY EARON NEALEY
LIGHTING SUPERVISOR ALEX BRANDT
ASSOCIATE LIGHTING SUPERVISOR JENNIE L. RODRIGUEZ

LOAD IN 09/27/2021 FOCUS 10/18/2021 TECH 10/22/2021

REVISION HISTORY

REV	REVISION	DATE
1	AS BUILT	11-07-21
2	POST FOCUS ADJUST	10-29-21
3	LED TAPE & BOOM ADJUST	10-11-21
4	FINAL LIGHTING	09-28-21
5	PRELIMINARY LIGHTING	09-23-21
6	UNDER DECK LED LX	09-08-21
7	REVISION	

PRINT SCALE CHECK
0 1 2
PRINT AT 100% ON ARCH D 24x36

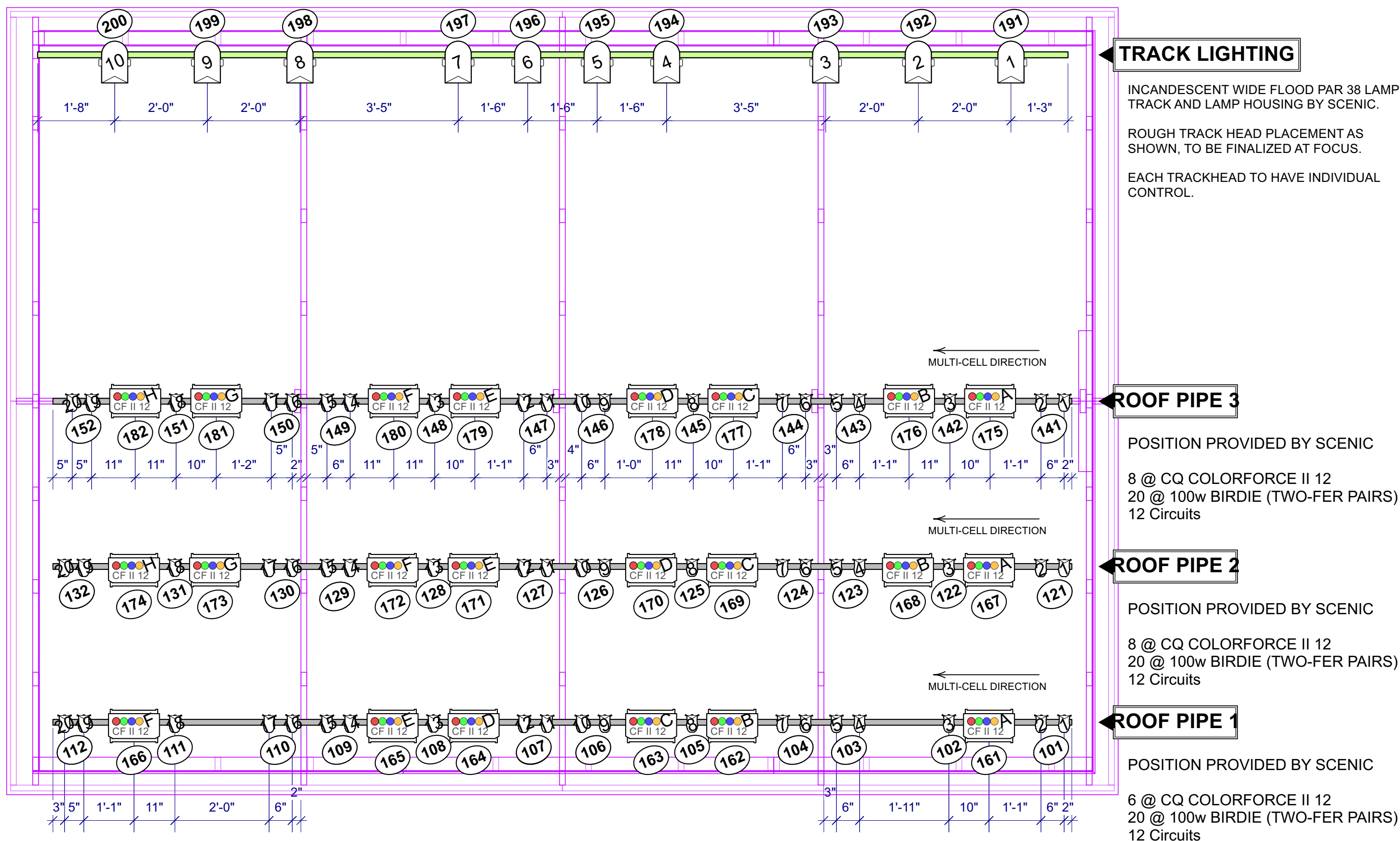
PRINT ON ARCH D SHEET

DATE: 09-06-2021 SCALE: 1/2" = 1'-0"
REVISION: 11-07-2021
DRAWN BY: CHRISTOPHER WONG
PLOTTED FROM: CULLD WATTAH - LX V0X
EXCEPT WHERE NOTED

PUBLISH DATE
AS BUILT: 11/07/2021

DRAWING No.
LX- 3 OF 4

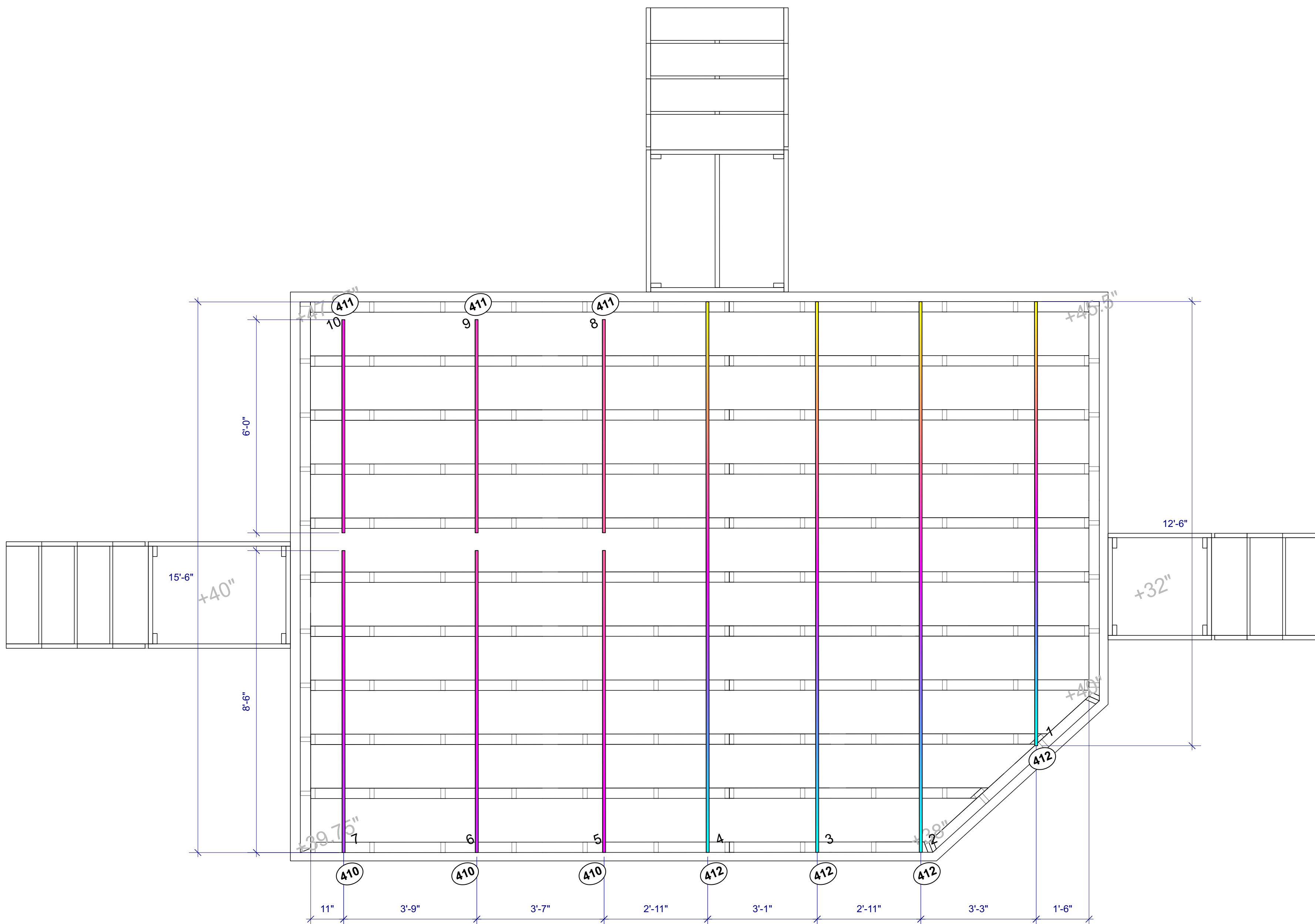
SLX MOUNT:
PLANKS & ROOF



ALL COLORFORCE II 12 UNITS TO HAVE INSTALLED WITH MANUFACTURER'S **BORDER OPTIC LENS 43°x43°.**

1 SLX-ROOF MOUNT

Scale: 1/2" = 1'-0"



RGBW LED TAPE SUMMARY: SPEC BY PUBLIC LIGHTING DEPARTMENT FOR IP RATED TAPE

3 CHANNELS OF RGBW CONTROL, 16 BIT DIMMING. CHANNEL # AS INDICATED. TOTAL TAPE NEEDED APPROXIMATELY 105'-6"

SCENIC BUILD DRAWING OF RAKED DECK ROTATED PERPENDICULAR FOR CLARITY.
MOUNT ON UNDERSIDE OF RAKED DECK, POINTING DOWN TOWARDS FLOOR. DISCUSS BEST MOUNTING OPTIONS FOR TAPE IN
DIRECTION AS SHOWN, SPACED BETWEEN SUPPORTS.

GENERAL NOTES

- REFER TO ALL PAPERWORK FOR ALL COLOR AND ACCESSORY INFO.
- CONSULT LISTED DIMENSIONS OVER SCALED DIMENSIONS.
- ALIGN ALL UNITS RELATIVE TO FOCUS DURING INSTALLATION.
- PLACE COLOR, TEMPLATES, ACCESSORIES IN UNITS BEFORE FOCUS.
- PLEASE PROVIDE EXTRA R104, R132, R119, R114 AND SHOW COLOR AT FOCUS.
- TRIM HEIGHTS ARE FROM STAGE DECK.
- BOOM UNIT HEIGHTS ARE FROM STAGE DECK TO SIDE-ARM PIPE.
- PROVIDE ADEQUATE STAGE WORKLIGHT TO BE CONTROLLED BY STAGE MANAGEMENT.
- THANK YOU.

SHEET CONTENTS
LX-01 OVERHEAD LIGHTING
LX-02 DECK & BOOMS
LX-03 SLX & SET MOUNT
LX-04 SECTION LIGHTING