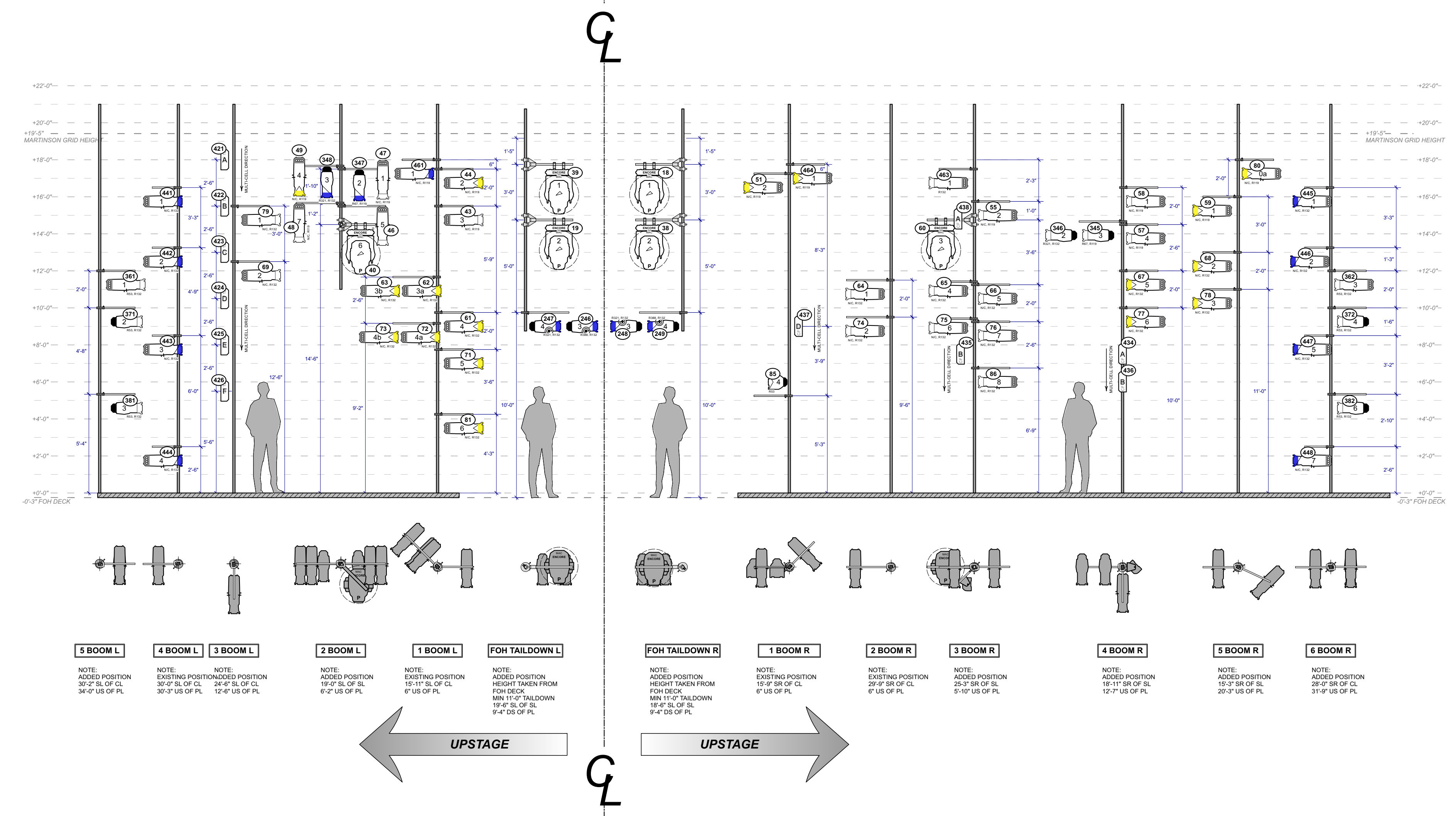


1 DECK LIGHTING
Scale: 1/4" = 1'-0"



2 BOOM AND TAILDOWN ELEVATION
Scale: 1/4" = 1'-0"

NOTE: PLEASE PROVIDE FLOCKED TOP-HATS AND HALF-HATS (EYELASH) FOR ALL BOOM UNITS.
REGULAR LENGTH ACCESSORIES FOR 26DEG, SHORT ACCESSORIES FOR 36DEG, 50DEG, 70DEG AND
PARS.

- GENERAL NOTES**
- REFER TO ALL PAPERWORK FOR ALL COLOR AND ACCESSORY INFO.
 - CONSULT LISTED DIMENSIONS OVER SCALED DIMENSIONS.
 - ALIGN ALL UNITS RELATIVE TO FOCUS DURING INSTALLATION.
 - PLACE COLOR, TEMPLATES, ACCESSORIES IN UNITS BEFORE FOCUS.
 - PLEASE PROVIDE EXTRA R104, R132, R119, R114 AND SHOW COLOR AT FOCUS.
 - TRIM HEIGHTS ARE FROM STAGE DECK.
 - BOOM UNIT HEIGHTS ARE FROM STAGE DECK TO SIDE-ARM PIPE.
 - PROVIDE ADEQUATE STAGE WORKLIGHT TO BE CONTROLLED BY STAGE MANAGEMENT.
 - THANK YOU.

SHEET CONTENTS
LX-01 OVERHEAD LIGHTING
LX-02 DECK & BOOMS
LX-03 SLX & SET MOUNT
LX-04 SECTION LIGHTING

JEANETTE OI-SUK YEW

LIGHTING DESIGNER

JEANETTE@JEANETTEYEW.COM

JEANETTEYEW.COM

THIS DRAWING AND ALL RELATED PAPERWORK, DESIGN CONCEPTS AND THE
RESULTANT DESIGN IS A CREATING DESIGN THAT IS UNICALLY OWNED BY
JEANETTE OI-SUK YEW AND ATTEMPT TO USE, REPRODUCE, OR OTHERWISE
FOR THE DRAWING UNDER THE NAME OF THE DRAWING THEATRE, IS
A VIOLATION OF THE COPYRIGHT AND THE LIGHTING DESIGNER'S RIGHTS.
AND INTERNATIONALLY THIS DRAWING AND THE LIGHTING DESIGNER'S RIGHTS
IS RESERVED. JEANETTE OI-SUK YEW. ALL RIGHTS RESERVED.

Please recycle this paper.

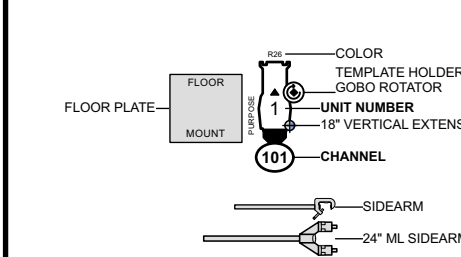
DISCLAIMER

This drawing represents visual concepts and construction suggestions only. It does
not replace the knowledge and advice of a licensed structural engineer. The designer
does not warrant, in any way, the accuracy of this information and shall not be
responsible for discrepancies between this document and the existing conditions. The
designer will not assume responsibility for improper engineering, construction,
handling or use of this lighting equipment.

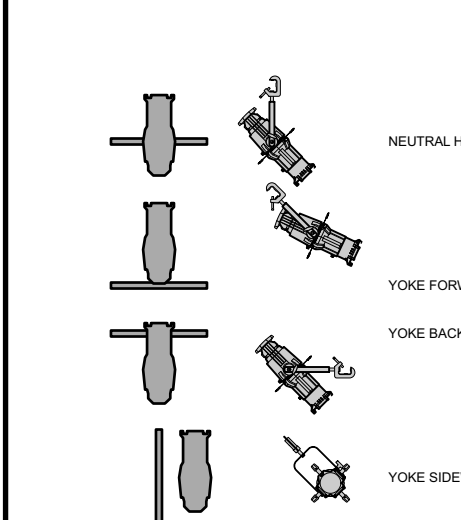
INSTRUMENT KEY

- MARTIN MAC
ENCORE PERFORMANCE WRM
600w
MODE: STANDARD
- 14 DEG ETC S4 @ 750w/115v
- 19 DEG ETC S4 @ 750w/115v
- 26 DEG ETC S4 @ 750w/115v
- 36 DEG ETC S4 @ 750w/115v
- 50 DEG ETC S4 @ 750w/115v
- 70 DEG ETC S4 @ 750w/115v
- 26 DEG PROLIGHTS ECLIPSE FS
200w
MODE: 13 CH
- 36 DEG PROLIGHTS ECLIPSE FS
200w
MODE: 13 CH
- 50 DEG PROLIGHTS ECLIPSE FS
200w
MODE: 13 CH
- 70 DEG PROLIGHTS ECLIPSE FS
200w
MODE: 13 CH
- MFL ETC S4 PAR @ 750w/115v
- WFL ETC S4 PAR @ 750w/115v
- XWFL ETC S4 PAR @ 750w/115v
- PAR36 TRACKLIGHT WITH
WIDE FLOOD PAR 36 INCANDESCENT LAMP
- PAR 16 BIRDIE @ 100w/120v
- AJH H20 DMX IR 27 DEG
80w
MODE: STANDARD DMX
- CQ COLORFORCE I-72
440w
MODE: I-M4 MULTICHANNEL RGBA
(12 CELLS)
- CQ COLORFORCE II-12
115w
MODE: RGBA x1 MULTICHANNEL
STROBE ON (4 CELLS)
- CQ COLORFORCE I-12
120w
MODE: 4 RGBA MULTICHANNEL
(2 CELLS)
- RGBW LED TAPE
SPEC TBD SEE DETAIL
- PRACTICAL
SPEC TBD SEE DETAIL

TYPICAL NOTATION



HANG GUIDE



THE PUBLIC THEATRE PRESENTS
cullud wattah

by Erika Dickerson-Despenza
directed by Candis C. Jones

PUBLIC. **CULLUD WATTAH**

MARTINSON THEATRE
NEW YORK CITY, NY

PRODUCED BY
THE JOSEPH PAPP PUBLIC THEATRE

DIRECTED BY CANDIS C. JONES

SCENIC DESIGN BY ADAM RIGG

COSTUME DESIGN BY KARA HARRISON

LIGHTING DESIGN BY JEANETTE OI-SUK YEW

SOUND DESIGN BY SHANAN REIKI ZAFAR

HAIR, WIGS, MAKE-UP BY EARON NEALEY

LIGHTING SUPERVISOR ALEX BRANDT

ASSOCIATE LIGHTING SUPERVISOR JENNIE L. RODRIGUEZ

LOAD IN 09/27/2021 FOCUS 10/18/2021 TECH 10/22/2021

REVISION HISTORY

REVISION

DATE

PRINT SCALE CHECK

PRINT AT 100% ON ARCH D 24X36

PRINT ON ARCH D SHEET

DATE: 09-06-2021 SCALE: 1/4" = 1'-0"

REVISION: 11-07-2021

DRAWN BY: CHRISTOPHER WONG

EXCEPT WHERE NOTED

PLOTTED FROM: CULLUDWATTAH-LX-VWX

PUBLISH DATE

AS BUILT: 11/07/2021

DRAWING No.

LX- 2 OF 4

DECK LIGHTING & BOOM ELEVATION