

NOTES
-ALL LISTS ON 1" CENTERS UNLESS NOTED
-TRIM HEIGHTS ARE MEASURED FROM THE SHOW
DECK TO THE PIPE OR BASKET
-PREPARE SPARE CIRCUITS AT EACH POSITION

KEY

- BEST BOY
HP
- GLP
Impression
X4S
- GLP
Impression
X4 XL
- MAC
ENCORE
PERF COLD
- MAC
ENCORE
PERF WARM
- VL3500
WASH
- S4 14DEG
- S4 19DEG
- S4 28DEG
- S4 LED
SERIES 2
LUSTR
14DEG
- S4 LED
SERIES 2
LUSTR
50DEG
- BIRDIE JDR
FLOOD
- GANTOM
SPOT
RGBW
- MINI 10

TYPICAL

- TEMPLATE INDICATOR
UNIT NUMBER
- CHANNEL NUMBER

LIGHTING DESIGN BRADLEY KING
917-543-1394
BRADLEY.KING@GMAIL.COM

ASSOCIATE NICK SOLYOM
(818) 822-7158
NICK@SOLYOMDESIGN.COM
HTTP://SOLYOMDESIGN.COM

THE DRAWING AND INFORMATION CONTAINED HEREIN
REPRESENTS VISUAL CONCEPTS AND CONSTRUCTION
SUGGESTIONS ONLY. THE DESIGNER IS NOT RESPONSIBLE FOR
THE ACCURACY OF THE INFORMATION PROVIDED TO THE
CLIENT AND WILL NOT ASSUME RESPONSIBILITY FOR ANY
ENGINEERING, ELECTRICAL, OR CONSTRUCTION VIOLATIONS OR
INJURY OR DEATH. ALL MATERIALS, METHODS, AND
EQUIPMENT SHALL BE APPROVED BY THE DESIGNER.
STAMPED BY: [Signature]



FLYING OVER SUNSET

BOOK BY JAMES LAPINE
MUSIC BY TOMMY
LYRICS BY MICHAEL KORN
DIRECTED BY JAMES LAPINE

VIVIAN BEAUMONT THEATRE
100 WEST 65TH ST NY NY

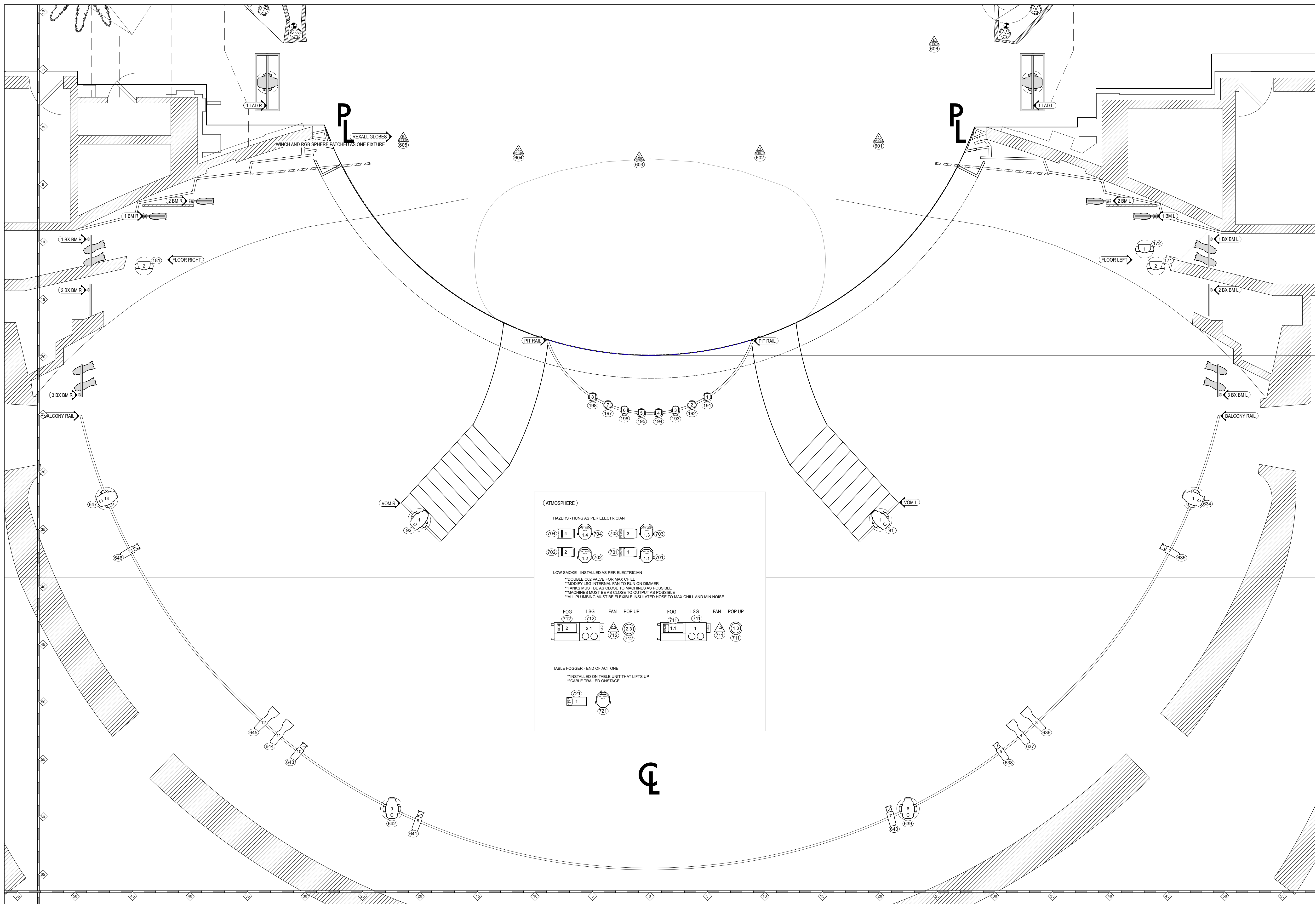
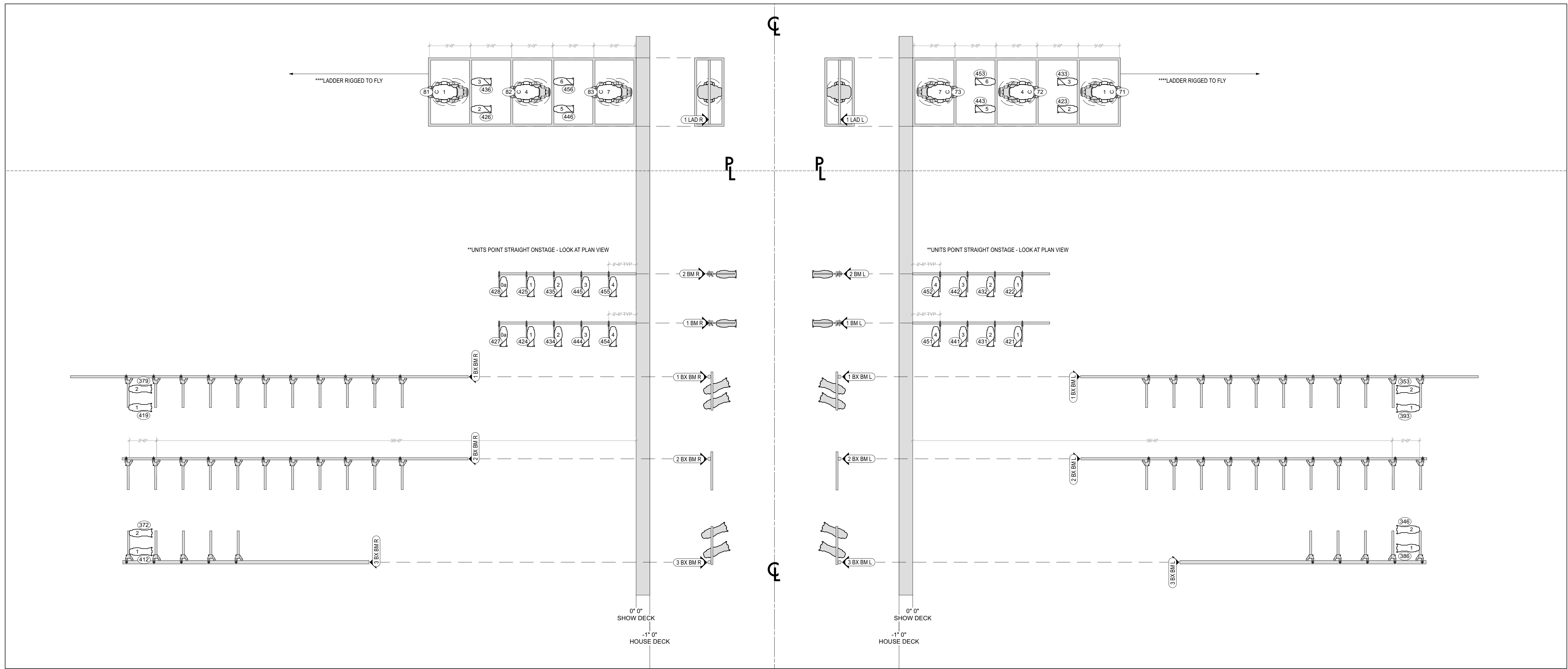
SET DESIGNER GEORGE J. BORTT
LIGHTING DESIGNER BRADLEY KING

UNION CENTER THEATRE

LIGHT PLOT ABOVE

SCALE: 1/4" = 1'-0"
DATE: 09 FEB 2020
DRAWN: 16

PLATE:
1 OF 5



NOTES
-ALL LUMENS ON 1" CENTERS UNLESS NOTED
-TRIM HEIGHTS ARE MEASURED FROM THE SHOW
DECK TO THE PIPE OR BARS
-PREPARE SPARE CIRCUITS AT EACH POSITION

- KEY
- BEST BOY
HP
 - GLP
Impression
X4S
 - GLP
Impression
X4 XL
 - MAC
ENCORE
PERF COLD
 - MAC
ENCORE
PERF WARM
 - VL3500
WASH
 - S4 14DEG
 - S4 19DEG
 - S4 26DEG
 - S4 LED
SERIES 2
LUSTR
14DEG
 - S4 LED
SERIES 2
LUSTR
50DEG
 - BIRDIE JDR
FLOOD
 - GANTOM
SPOT
RGBW
 - MINI 10

TYPICAL

TEMPLATE INDICATOR
UNIT NUMBER
CHANNEL NUMBER

LIGHTING DESIGN BRADLEY KING
917-543-1284
BRADLEY.KING@GMAIL.COM

ASSOCIATE NICK SOLYOM
(818) 822-7188
NICK@SOLYOMDESIGN.COM
HTTP://SOLYOMDESIGN.COM

THE DRAWING AND INFORMATION CONTAINED HEREIN
REPRESENTS VISUAL CONCEPTS AND CONSTRUCTION
SUGGESTIONS ONLY. THE DESIGNER IS NOT RESPONSIBLE FOR
THE ACCURACY OF THE INFORMATION CONTAINED HEREIN OR
FOR THE RESULTS OF ANY CONSTRUCTION. THE DESIGNER
WILL NOT ASSUME RESPONSIBILITY FOR ANY CONSTRUCTION
DEFECTS OR FOR ANY DAMAGE TO PERSONS OR PROPERTY
OR FOR THE RESULTS OF ANY CONSTRUCTION. THE DESIGNER
WILL NOT ASSUME RESPONSIBILITY FOR ANY CONSTRUCTION
DEFECTS OR FOR ANY DAMAGE TO PERSONS OR PROPERTY
OR FOR THE RESULTS OF ANY CONSTRUCTION.

FLYING OVER SUNSET

BOOK BY JAMES LAPINE
MUSIC BY TOMMY
LYRICS BY MICHAEL KOREN
DIRECTED BY JAMES LAPINE

VIVIAN BEAUMONT THEATRE
100 WEST 6TH AVENUE
DENVER, CO 80202

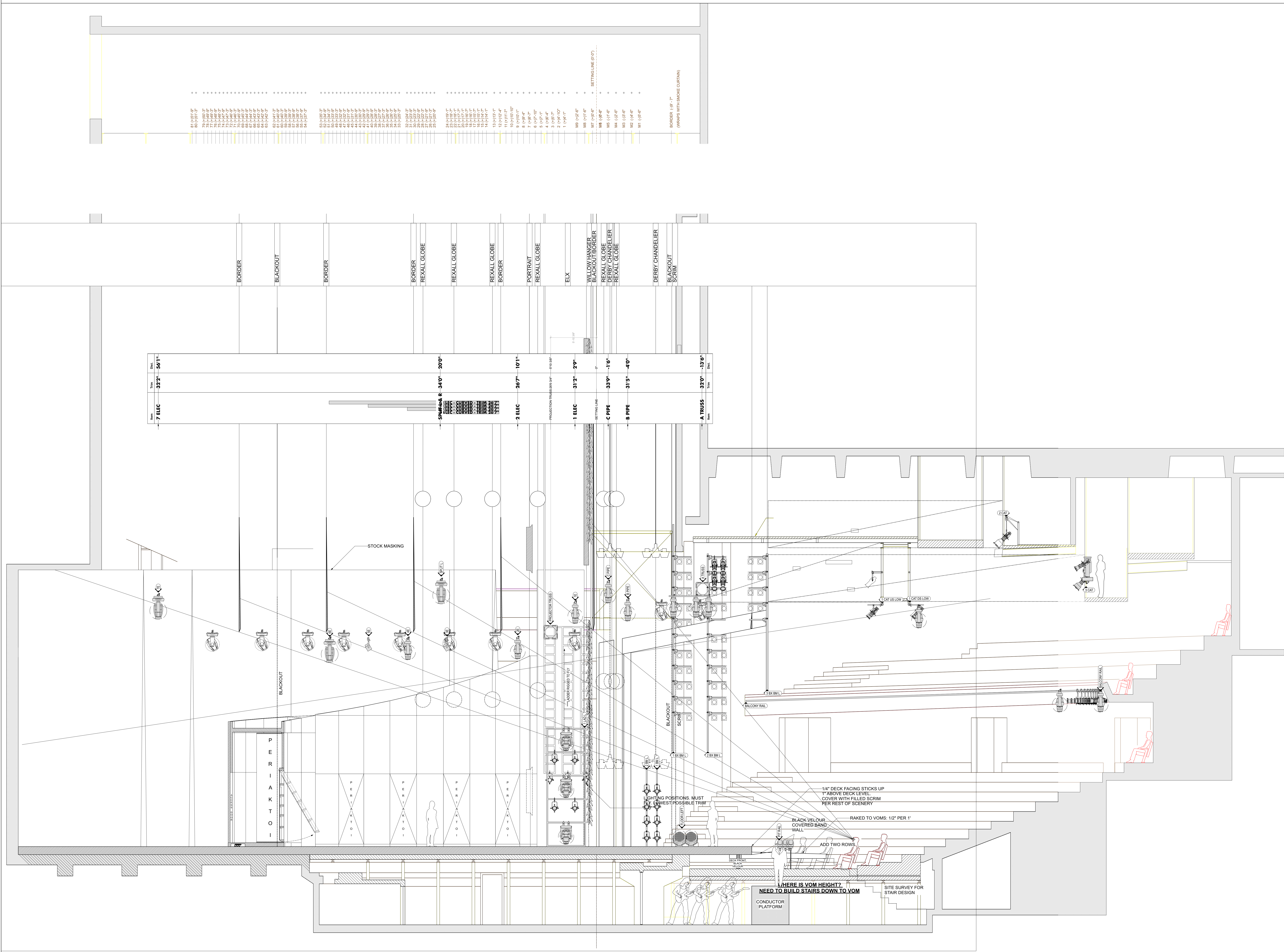
SET DESIGNER: GEORGE A. BORTT
LIGHTING DESIGNER: BRADLEY KING

UNION CENTER THEATRE

LIGHT PLOT BELOW

SCALE: 1/4" = 1'-0"
DATE: 09 FEB 2020
DRAWN: HK

PLATE: 2 OF 5



NOTES

-ALL LAMPS ON 1" CENTERS UNLESS NOTED

-TRIM HEIGHTS ARE MEASURED FROM THE SHOW DECK TO THE PIPE OR BASKET

-PREPARE SPARE CIRCUITS AT EACH POSITION

KEY

BEST BOY
HP

GLP
Impression
X4S

GLP
Impression
X4 XL

MAC
ENCORE
PERF COLD

MAC
ENCORE
PERF WARM

VL3500
WASH

S4 14DEG

S4 19DEG

S4 26DEG

S4 LED
SERIES 2
LUSTR
14DEG

S4 LED
SERIES 2
LUSTR
50DEG

BIRDIE JDR
FLOOD

GANTOM
SPOT
RGBW

MINI 10

TYPICAL

TEMPLATE INDICATOR

UNIT NUMBER

CHANNEL NUMBER

LIGHTING DESIGN BRADLEY KING

917-543-1394
BRADLEY.KING@GMAIL.COM

ASSOCIATE NICK SOLYOM
(818) 822-7158
NICK@SOLYOMDESIGN.COM
HTTP://SOLYOMDESIGN.COM

THE DRAWING AND INFORMATION CONTAINED HEREIN REPRESENTS VISUAL CONCEPTS AND CONSTRUCTION SUGGESTIONS ONLY. THE DESIGNER IS NOT RESPONSIBLE FOR THE ACCURACY OF THE INFORMATION PROVIDED TO THE DESIGNER AND WILL NOT ASSUME RESPONSIBILITY FOR ANY CONSTRUCTION, ELECTRICAL, OR MECHANICAL WORK OR FOR THE SAFETY OF THE DESIGN. ALL INFORMATION PROVIDED HEREIN IS FOR INFORMATION ONLY AND DOES NOT CONSTITUTE A CONTRACT. THE DESIGNER IS NOT RESPONSIBLE FOR THE SAFETY OF THE DESIGN OR THE SAFETY OF THE CONSTRUCTION.

FLYING OVER SUNSET

BOOK BY JAMES LAPINE
MUSIC BY TOMMY
LYRICS BY MICHAEL KORE
DIRECTED BY JAMES LAPINE

VIVIAN BEAUMONT THEATRE
100 WEST 67TH ST NY NY

SET DESIGNER BEOWULF BORTT
LIGHTING DESIGNER BRADLEY KING

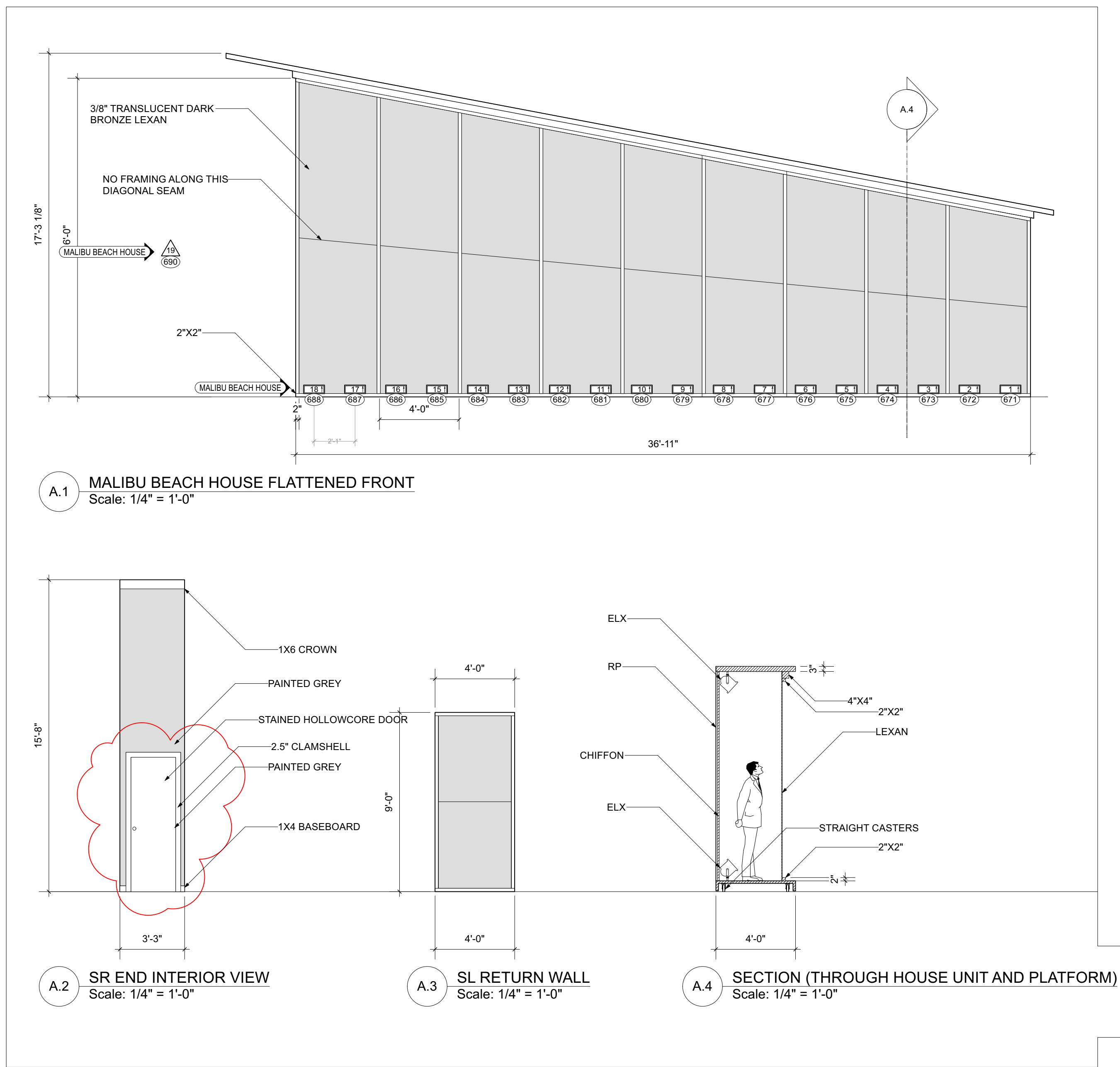
UNION CENTER THEATRE

SECTION

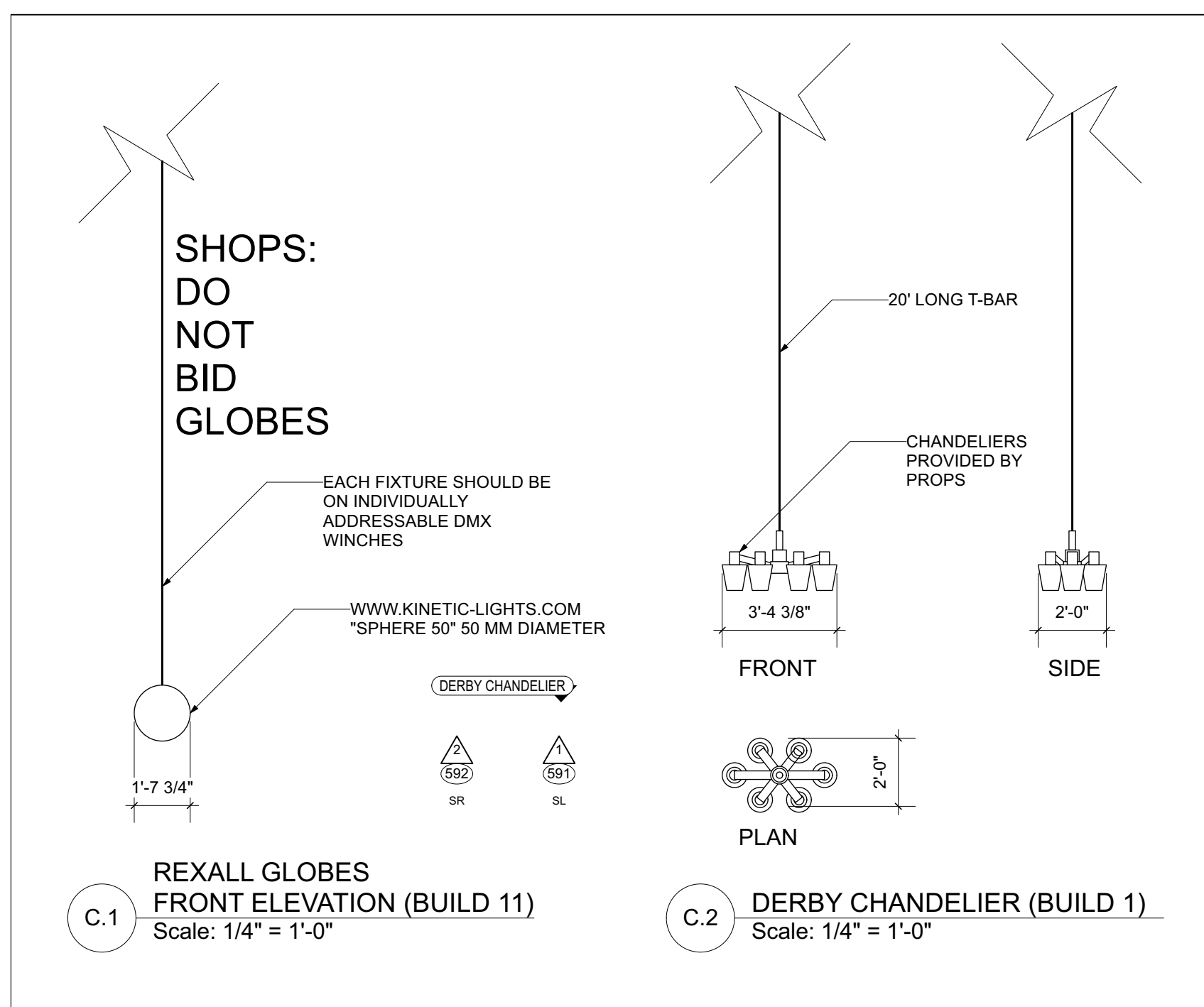
SCALE 1/4" = 1'-0"
DATE 09 FEB 2020
DRAWN 16

PLATE 3 OF 5

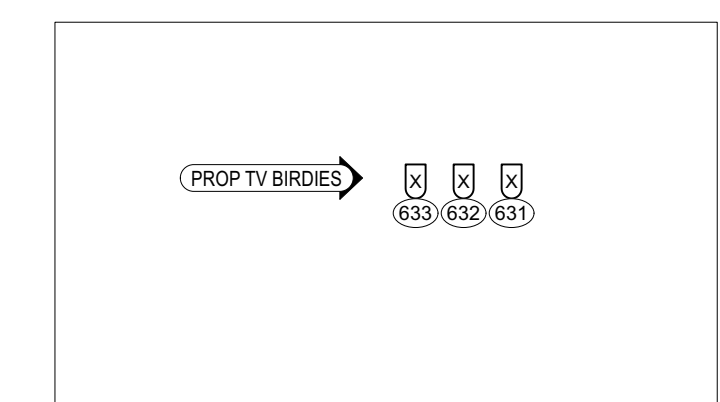
SET DRAWING PLATE 11 - MALIBU BEACH HOUSE



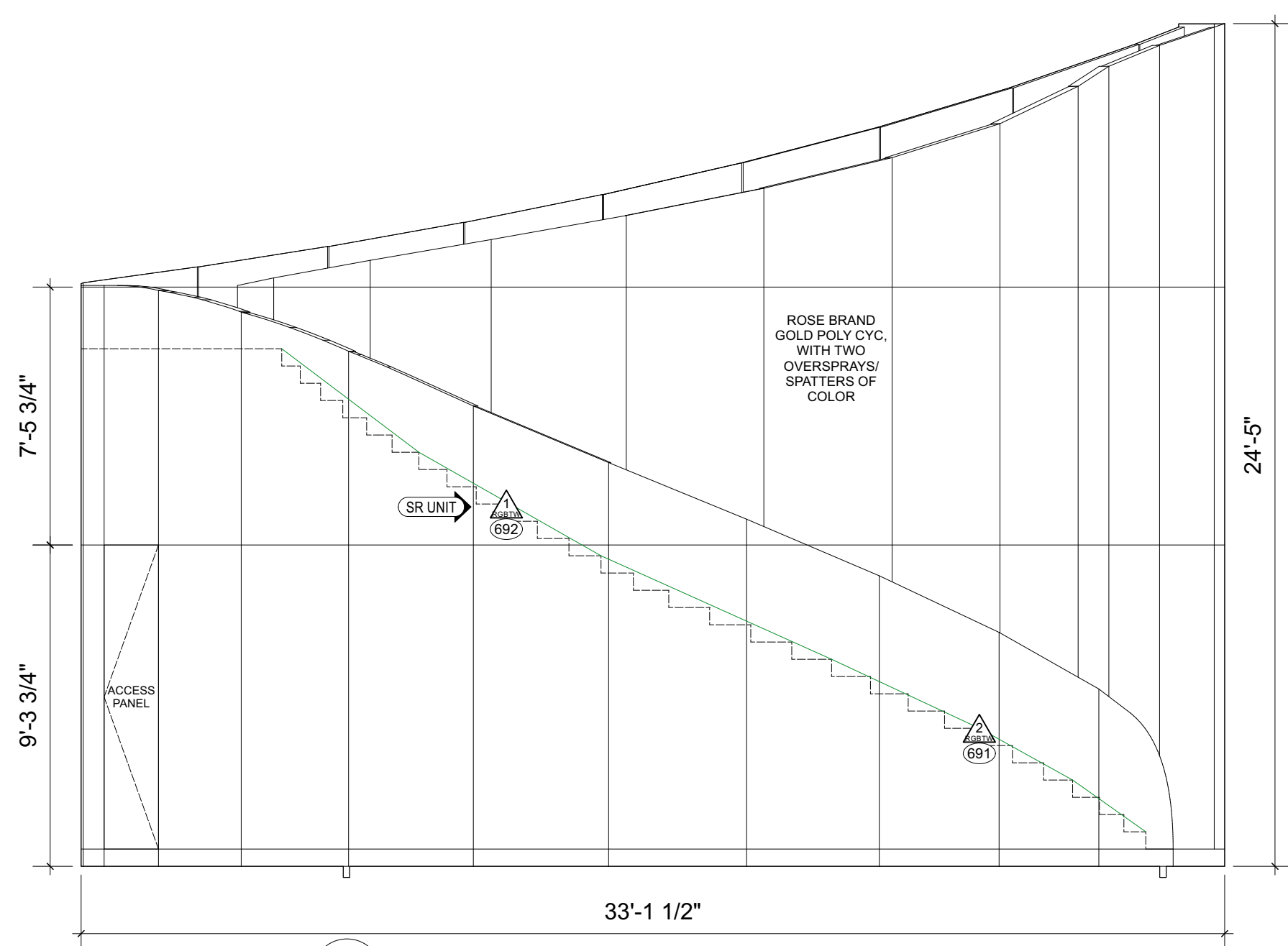
SET DRAWING PLATE 13 - GLOBES AND CHANDELIER



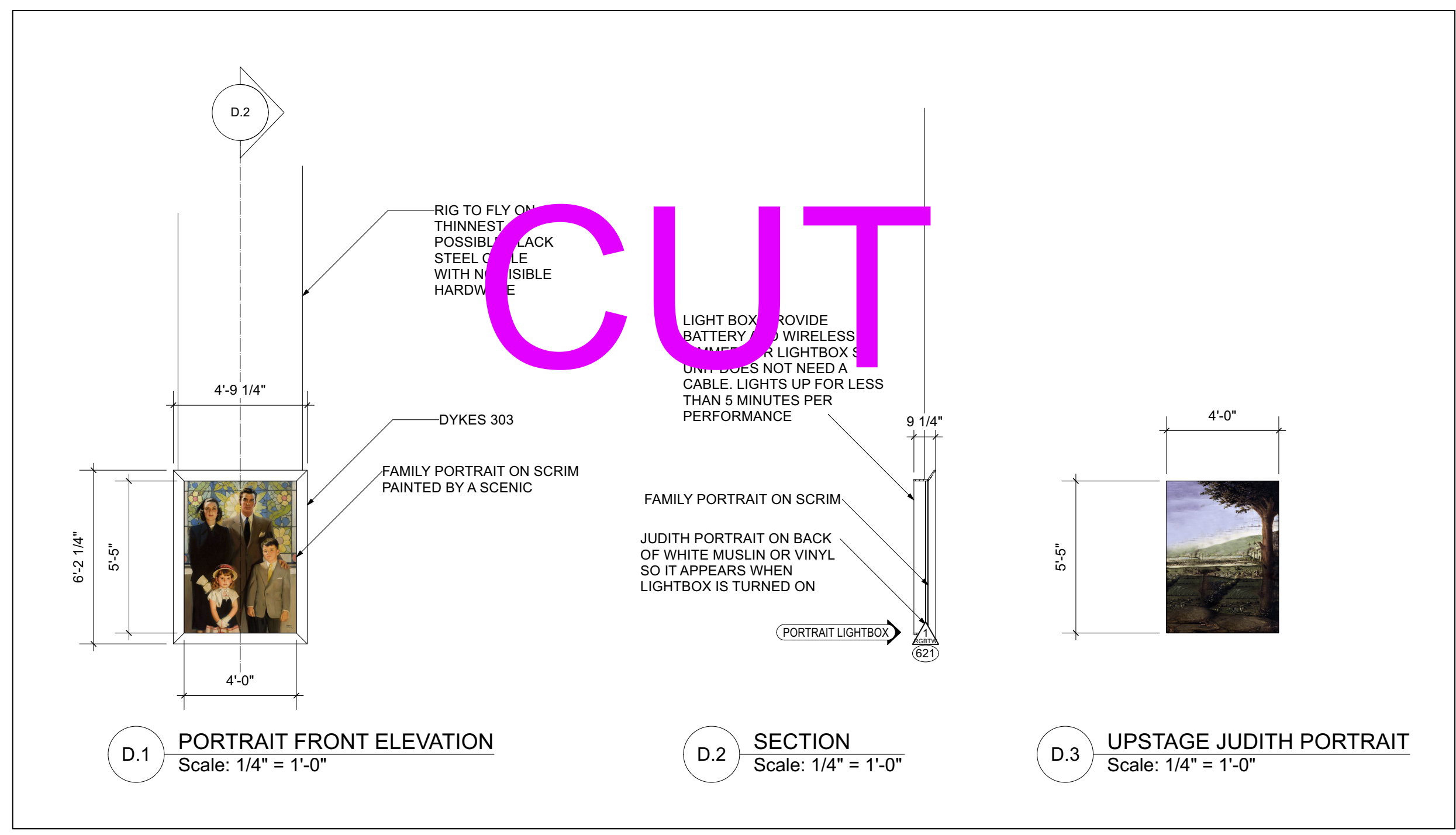
PROP TV



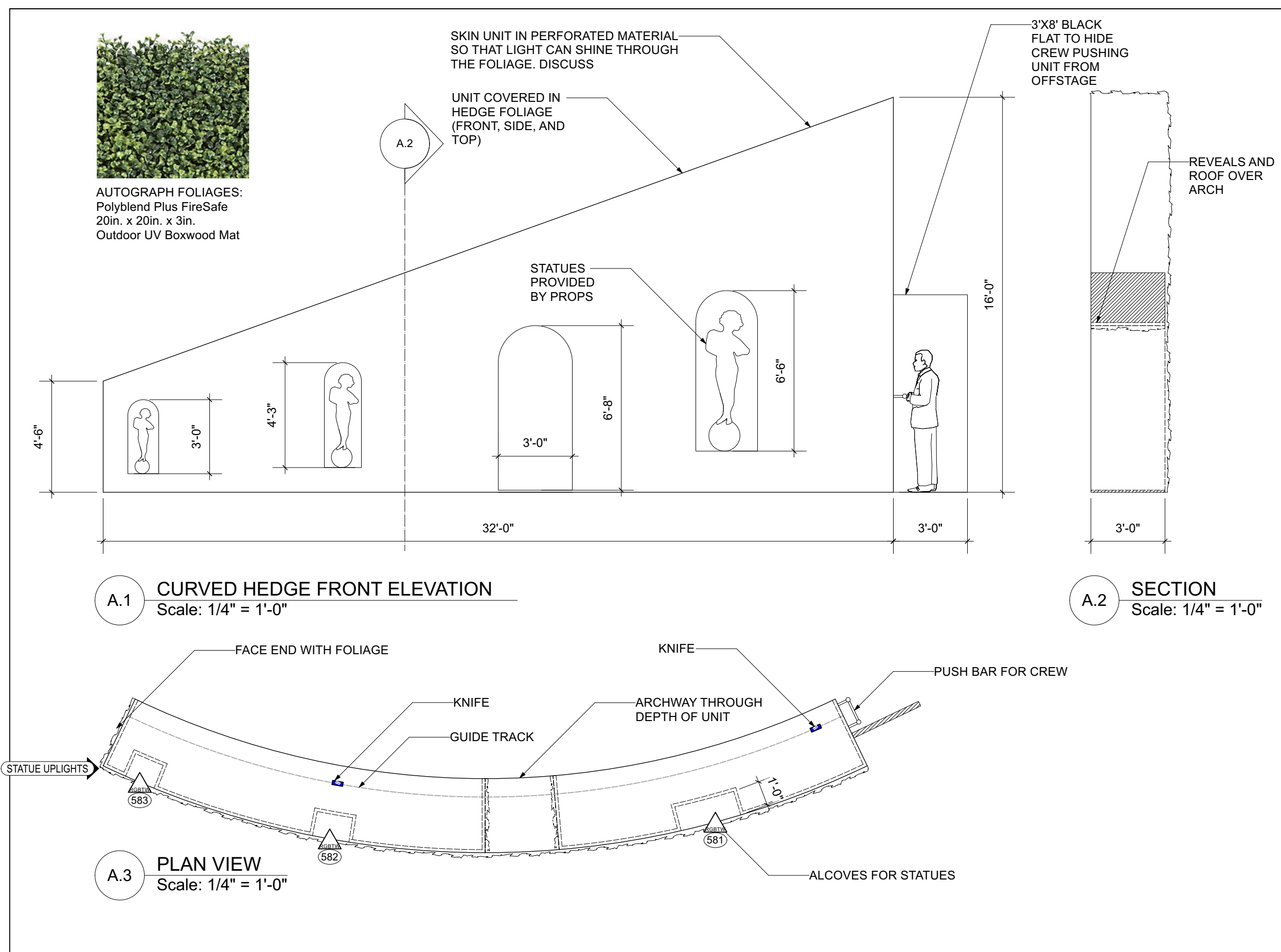
SET DRAWING PLATE 7 - SR PERIAKTOI REAR



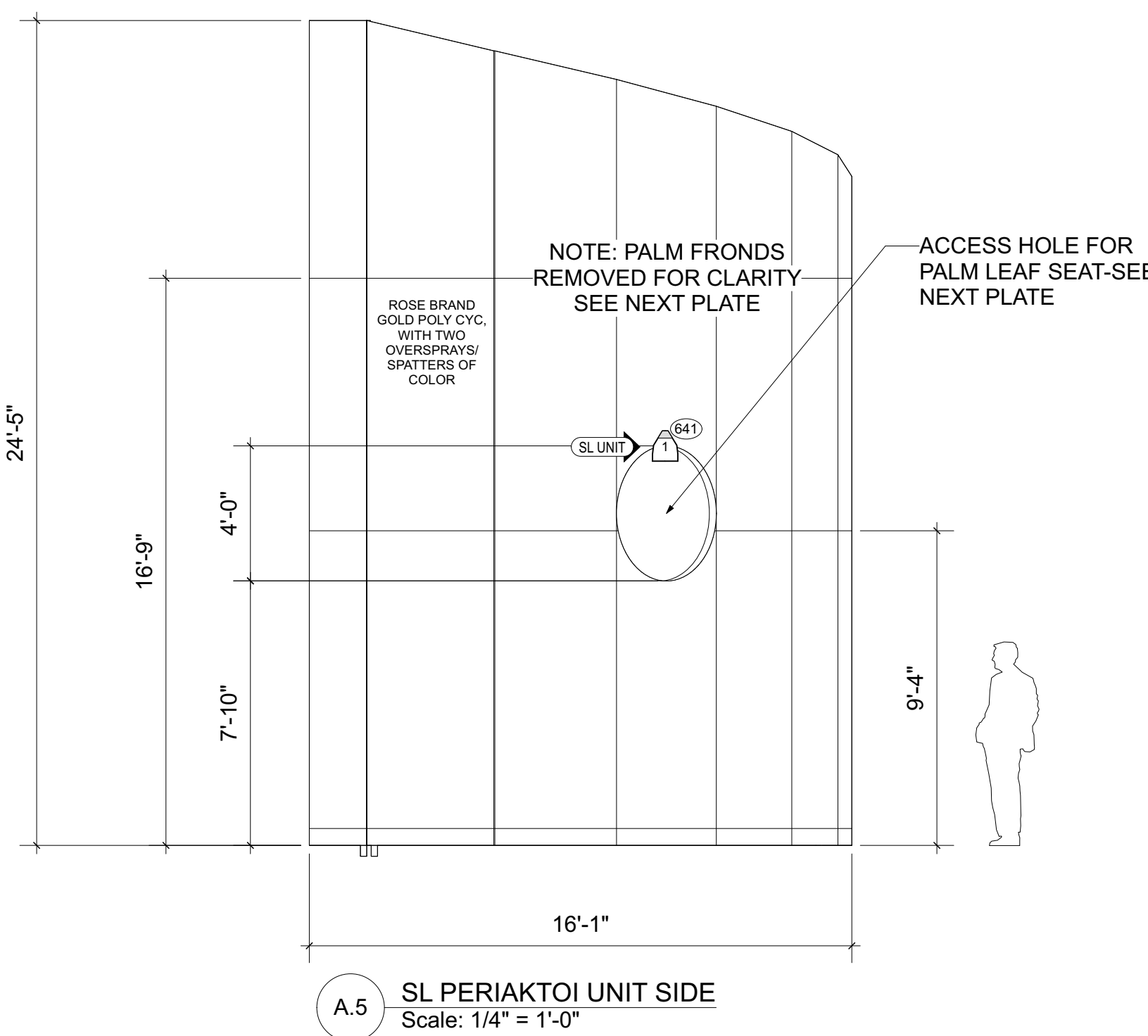
SET DRAWING PLATE 13 - PORTRAIT LIGHT BOX



SET DRAWING PLATE 13 - HEDGE



SET DRAWING PLATE 13 - SL PERIAKTOI SIDE



NOTES

- ALL UNITS ON 1" CENTERS UNLESS NOTED
- ITEM HEIGHTS ARE MEASURED FROM THE SHOW DECK TO THE PIPE OR BAR
- PREPARE SPARE CIRCUITS AT EACH POSITION

KEY

- BEST BOY HP
- GLP Impression X4S
- GLP Impression X4 XL
- MAC ENCORE PERF COLD
- MAC ENCORE PERF WARM
- VL3500 WASH
- S4 14DEG
- S4 19DEG
- S4 26DEG
- S4 LED SERIES 2 LUSTR 14DEG
- S4 LED SERIES 2 LUSTR 30DEG
- BIRDIE JDR FLOOD
- GANTOM SPOT RGBW
- MINI 10

TYPICAL

- TEMPLATE INDICATOR UNIT NUMBER
- CHANNEL NUMBER

LIGHTING DESIGN BRADLEY KING
917-543-1354
BRADLEY.KING@GMAIL.COM

ASSOCIATE NICK SOLYOM
(818) 822-7158
NICK@SOLYOMDESIGN.COM
HTTP://SOLYOMDESIGN.COM

THE DRAWING AND INFORMATION CONTAINED HEREIN REPRESENTS VISUAL CONCEPTS AND CONSTRUCTION SUGGESTIONS ONLY. THE DESIGNER IS NOT RESPONSIBLE FOR THE ACCURACY OF THE INFORMATION PROVIDED TO THE USER. THE USER SHALL BE RESPONSIBLE FOR THE DESIGN AND WILL NOT ASSUME RESPONSIBILITY FOR ANY CONSTRUCTION, ELECTRICAL, OR MECHANICAL CONSTRUCTION, AND SHALL BE RESPONSIBLE FOR OBTAINING ALL NECESSARY PERMITS AND APPROVALS. THE USER SHALL BE RESPONSIBLE FOR THE DESIGN AND WILL NOT ASSUME RESPONSIBILITY FOR ANY CONSTRUCTION, ELECTRICAL, OR MECHANICAL CONSTRUCTION, AND SHALL BE RESPONSIBLE FOR OBTAINING ALL NECESSARY PERMITS AND APPROVALS.

FLYING OVER SUNSET
BOOK BY JAMES LAPINE
MUSIC BY TOMMY MOTT
LYRICS BY MICHAEL KORN
DIRECTED BY JAMES LAPINE
VIVIAN BEAUMONT THEATRE
100 WEST 6TH AVENUE
SET DESIGNER GEORGE J. BORTT
LIGHTING DESIGNER BRADLEY KING
LINCOLN CENTER THEATRE

SET ELECTRIC 2
SCALE: 1/4" = 1'-0"
DATE: 09 FEB 2020
DRAWN: 16

PLATE: 5 OF 5