

SYMBOLS

ROBE TARRANTULA  
MODE 4 (183 CHANNEL)  
[SLIM ARM SIDE COVERS]

ROBE SPIDER  
MODE 4 (90 CHANNEL)

ROBE ESPRIMO  
MODE 1 (49 CHANNEL)

QLP JDC1  
MODE 3 (68 CHANNEL)

CHAUDET STRIKE 1  
6 CHANNEL MODE

CHAUDET STRIKE P38  
6 CHANNEL MODE

QLP KNY DOT  
POWER SUPPLY IN  
MODE 7 (202 CHANNEL)

KEY

1  
FIXTURE NUMBER

NOTES:

REVISIONS:  
7/7/2021  
CUT STRIKE CANNON  
CUT US LIGHTING TRUSS WHISKER  
ADJUSTED WHISKER HEIGHTS  
TOP WHISKER MOVED 6" ONSTAGE  
ADDED LOCAL PROVISIONS  
ADDED T-BARS TO FIXTURES 101-103,  
105-107

THIS DRAWING REPRESENTS VISUAL CONCEPTS, CONSTRUCTION & MOUNTING SUGGESTIONS ONLY. IT DOES NOT REPLACE THE KNOWLEDGE AND ADVICE OF A QUALIFIED STRUCTURAL OR ELECTRICAL ENGINEER. THE DESIGNER IS UNQUALIFIED TO DETERMINE THE STRUCTURAL OR ELECTRICAL APPROPRIATENESS OF THIS DESIGN AND WILL NOT ASSUME RESPONSIBILITY FOR IMPROPER ENGINEERING OR USE. ALL INFO SUBJECT TO CHANGE ON SHORT NOTICE



BLACK PUMAS 2021 TOUR

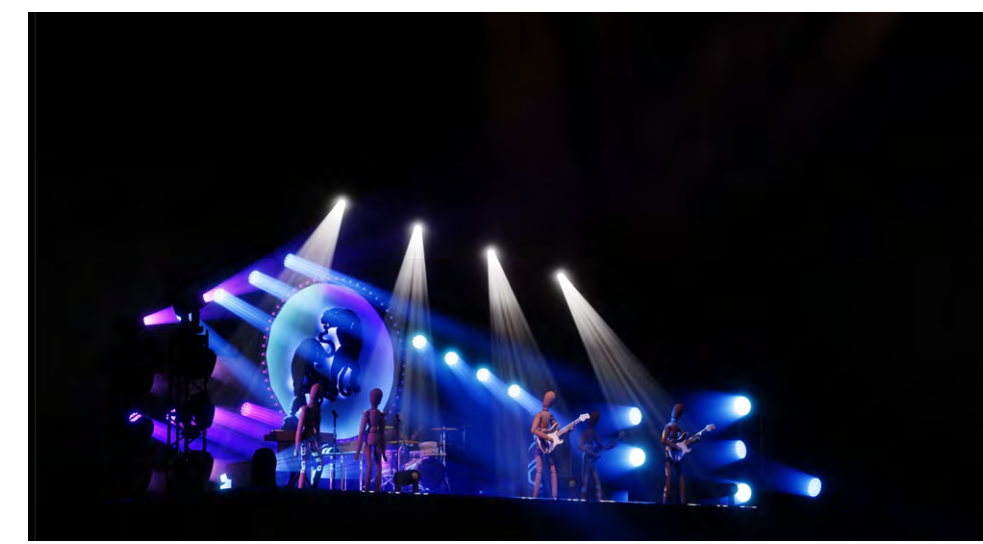
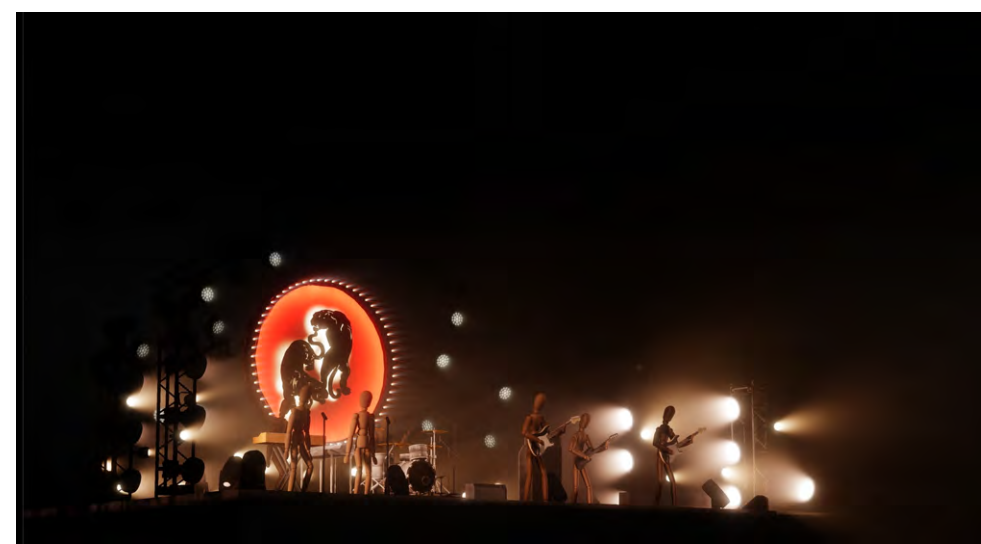
LIGHTING/PRODUCTION DESIGN BY:  
MARC JANOVITZ  
MARC@E26DESIGN.COM

TOUR DIRECTOR:  
JOHN MORFAT  
JOHN@TENATOMS.COM

SCALE: AS NOTED  
PRINT SIZE: ARCH D 36"X24"

OVERHEAD LIGHTING PLOT

DRAFTED BY: MJ / PH / JW  
DATE: 7/7/21 PLATE: 1 OF 6  
TIME: 3:02:26 PM



FIXTURES 113 + 115  
HUNG FROM 1' T-BARS

FIXTURES 112 + 116  
HUNG FROM 2' T-BARS

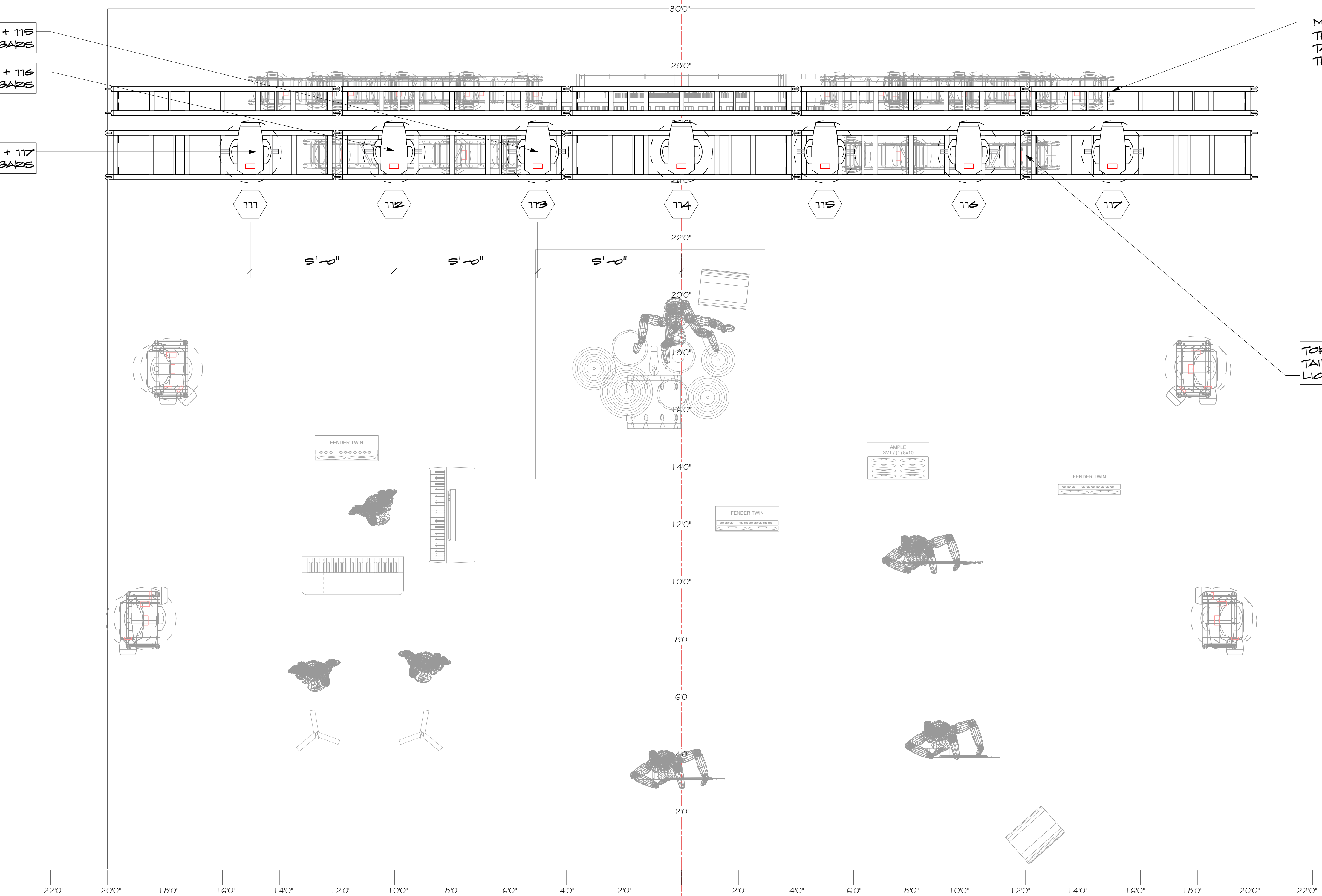
FIXTURES 111 + 117  
HUNG FROM 3' T-BARS

MIDDLE SPIDER WHISKER  
TRUSS  
TAILS DOWN FROM BACKDROP  
TRUSS

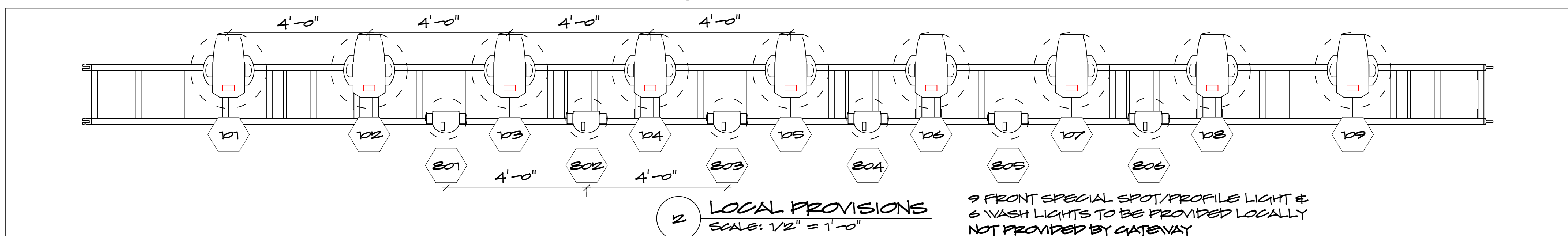
BACKDROP TRUSS  
TRIM HEIGHT - 21'0"

UPSTAGE LIGHTING TRUSS  
TRIM HEIGHT - 21'0"

TOP SPIDER WHISKER TRUSS  
TAILS DOWN FROM UPSTAGE  
LIGHTING TRUSS



1 PLAN VIEW  
SCALE: 1/2" = 1'-0"

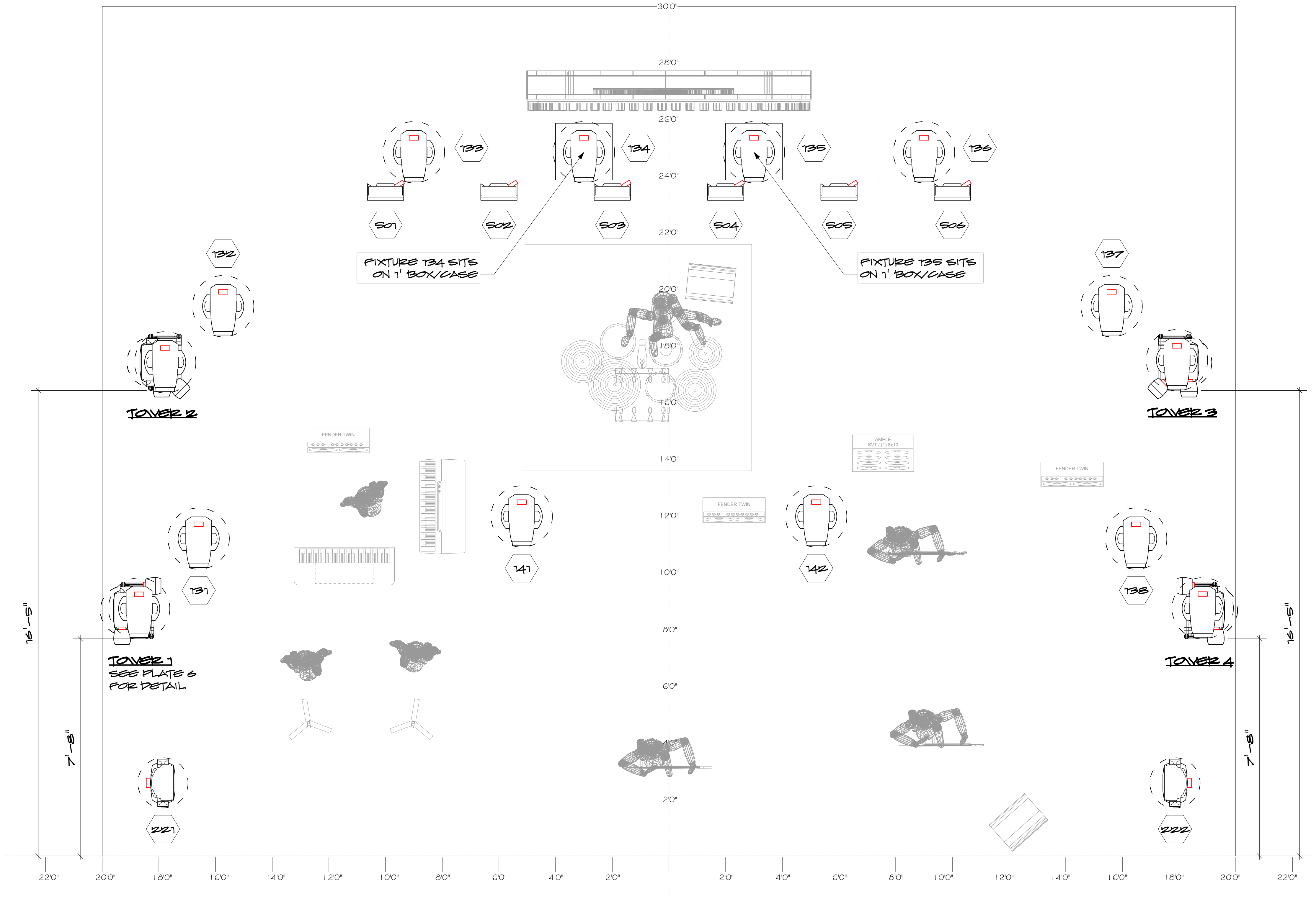


2 LOCAL PROVISIONS  
SCALE: 1/2" = 1'-0"

9 FRONT SPECIAL SPOT/PROFILE LIGHT &  
6 WASH LIGHTS TO BE PROVIDED LOCALLY  
NOT PROVIDED BY GATEWAY


2"  
FULL SCALE PRINT REFERENCE




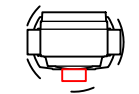
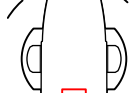
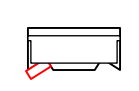
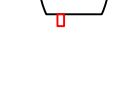
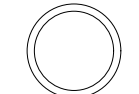



1 PLAN VIEW  
SCALE: 1/2" = 1'-0"

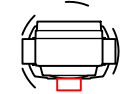
**E26** LIGHTING & PRODUCTION DESIGN



**SYMBOLS**

-  **ROBE TARRANTULA**  
MODE 4 (183 CHANNEL)  
[SLIM ARM SIDE COVERS]
-  **ROBE SPIDER**  
MODE 4 (90 CHANNEL)
-  **ROBE ESPRITE**  
MODE 1 (49 CHANNEL)
-  **QLP JRC1**  
MODE 3 (68 CHANNEL)
-  **CHAUVET STRIKE 1**  
6 CHANNEL MODE
-  **CHAUVET STRIKE P38**  
6 CHANNEL MODE
-  **QLP KNY DOT**  
POWER SUPPLY IN  
MODE 7 (202 CHANNEL)


**KEY**

-  **1** FIXTURE NUMBER

**NOTES:**

**REVISIONS:**  
7/7/2021 CUT STRIKE CANNON  
CUT US LIGHTING TRUSS WHISKER  
ADJUSTED WHISKER HEIGHTS  
TOP WHISKER MOVED 6" ONSTAGE  
ADDED LOCAL PROVISIONS  
ADDED T-BARS TO FIXTURES 101-103,  
105-107

THIS DRAWING REPRESENTS VISUAL CONCEPTS, CONSTRUCTION & MOUNTING SUGGESTIONS ONLY. IT DOES NOT REPLACE THE KNOWLEDGE AND ADVICE OF A QUALIFIED STRUCTURAL OR ELECTRICAL ENGINEER. THE DESIGNER IS UNQUALIFIED TO DETERMINE THE STRUCTURAL OR ELECTRICAL APPROPRIATENESS OF THIS DESIGN AND WILL NOT ASSUME RESPONSIBILITY FOR IMPROPER ENGINEERING OR USE. ALL INFO SUBJECT TO CHANGE ON SHORT NOTICE



**BLACK PUMAS**

**BLACK PUMAS 2021 TOUR**

**LIGHTING/PRODUCTION DESIGN BY:**  
MARC JANOVITZ  
MARC@E26DESIGN.COM

**TOUR DIRECTOR:**  
JOHN MOFFAT  
JOHN@TENATOMS.COM

**SCALE:** AS NOTED  
**PRINT SIZE:** ARCH D 36"X24"

**DECK LIGHTING PLOT**

DRAFTED BY: MJ / PH / JW  
DATE: 7/7/21 PLATE: 2 OF 6  
TIME: 3:02:28 PM





SYMBOLS

ROBE TARRANTULA  
MODE 4 (183 CHANNEL)  
[SLIM ARM SIDE COVERS]

ROBE SPIDER  
MODE 4 (90 CHANNEL)

ROBE ESPRITO  
MODE 1 (49 CHANNEL)

QLP JDC1  
MODE 3 (68 CHANNEL)

CHAUDET STRIKE 1  
6 CHANNEL MODE

CHAUDET STRIKE P38  
6 CHANNEL MODE

QLP KNY DOT  
POWER SUPPLY IN  
MODE 7 (202 CHANNEL)

KEY

1  
FIXTURE NUMBER

NOTES:

REVISIONS:  
7/7/2021 CUT STRIKE CANNON  
CUT US LIGHTING TRUSS WHISKER  
ADJUSTED WHISKER HEIGHTS  
TOP WHISKER MOVED 6" ONSTAGE  
ADDED LOCAL PROVISIONS  
ADDED T-BARS TO FIXTURES 101-103,  
125-127

THIS DRAWING REPRESENTS VISUAL CONCEPTS, CONSTRUCTION & MOUNTING SUGGESTIONS ONLY. IT DOES NOT REPLACE THE KNOWLEDGE AND ADVICE OF A QUALIFIED STRUCTURAL OR ELECTRICAL ENGINEER. THE DESIGNER IS UNQUALIFIED TO DETERMINE THE STRUCTURAL OR ELECTRICAL APPROPRIATENESS OF THIS DESIGN AND WILL NOT ASSUME RESPONSIBILITY FOR IMPROPER ENGINEERING OR USE. ALL INFO SUBJECT TO CHANGE ON SHORT NOTICE



BLACK PUMAS 2021 TOUR

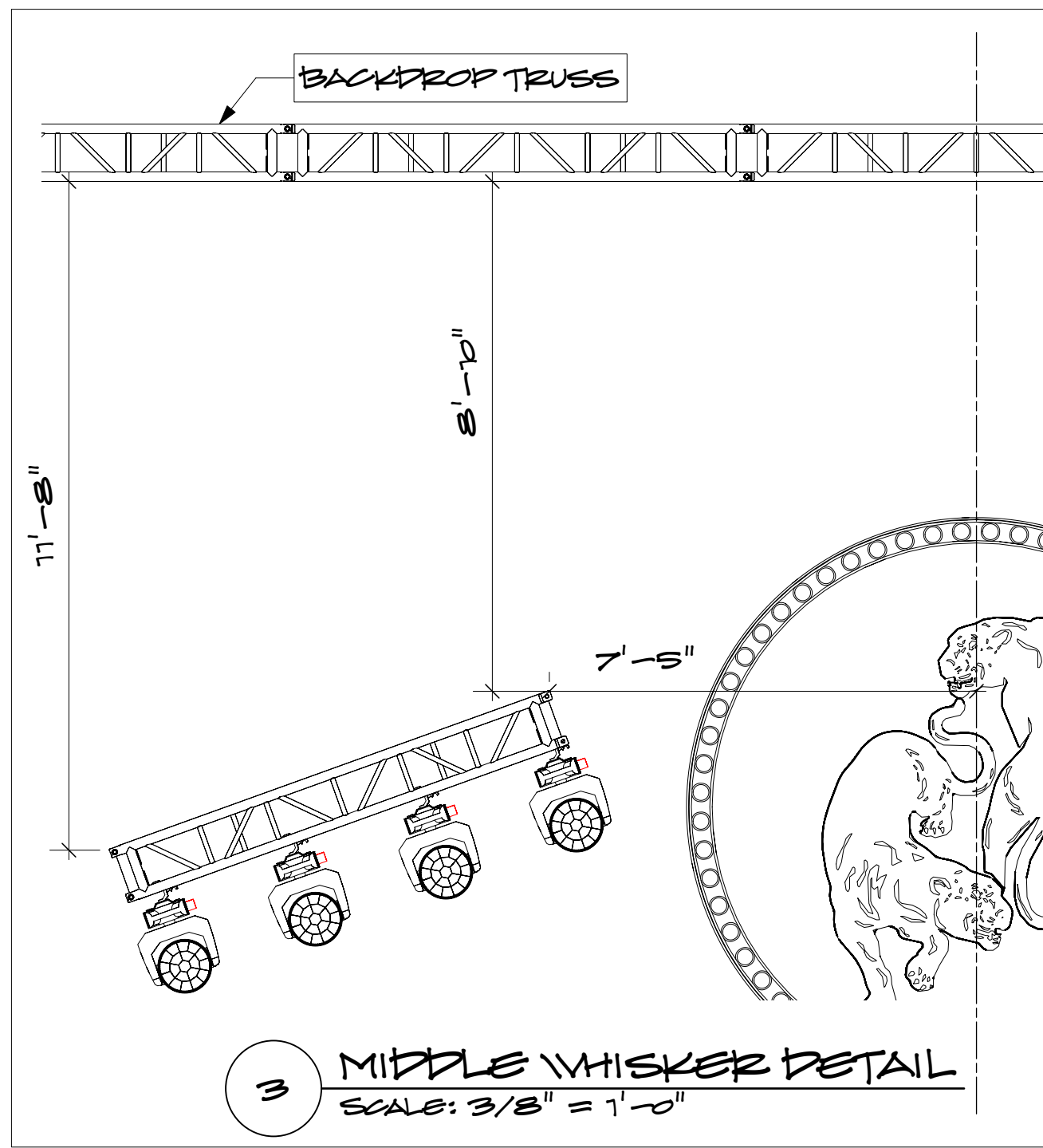
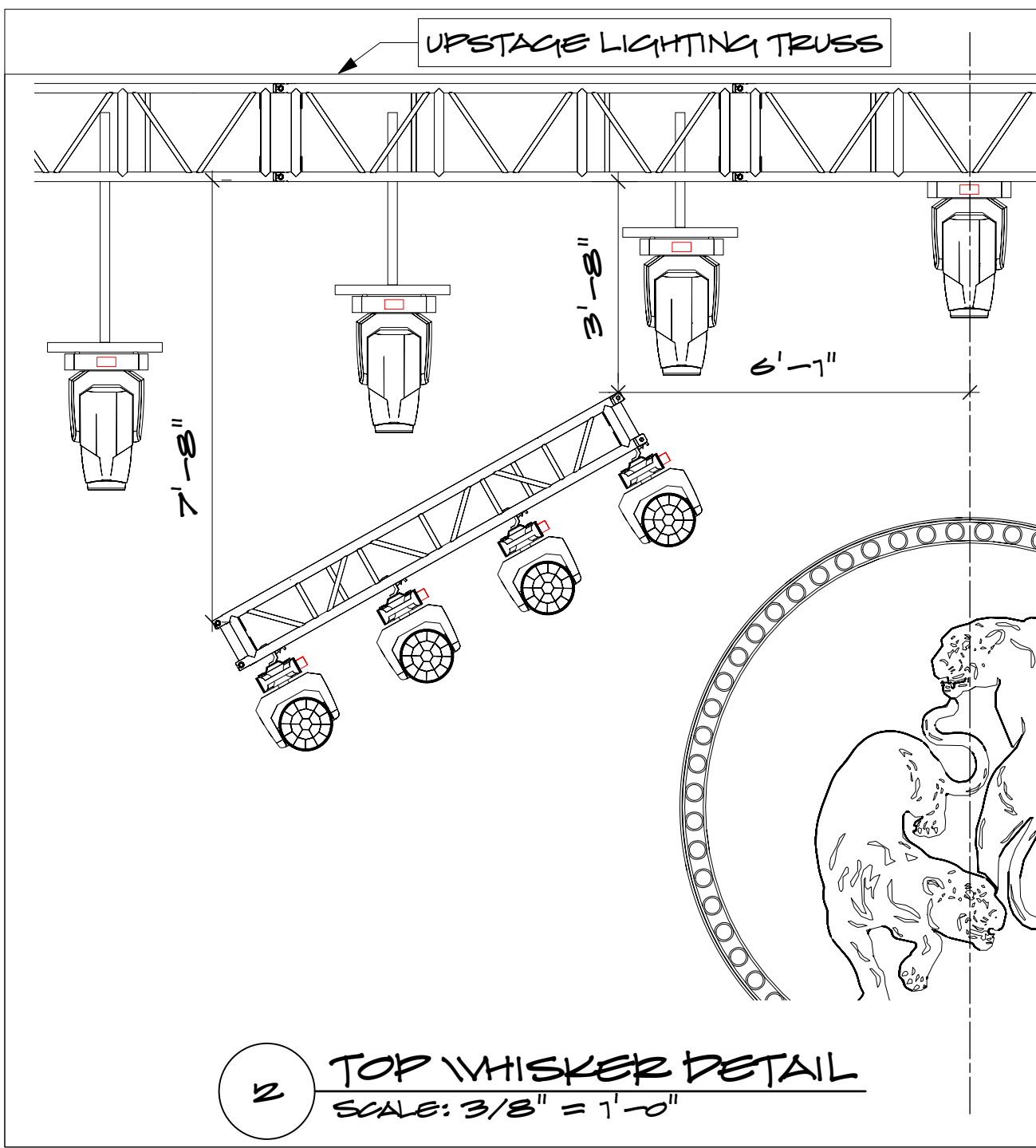
LIGHTING/PRODUCTION DESIGN BY:  
MARC JANOVITZ  
MARC@E26DESIGN.COM

TOUR DIRECTOR:  
JOHN MORFAT  
JOHN@TENATOMS.COM

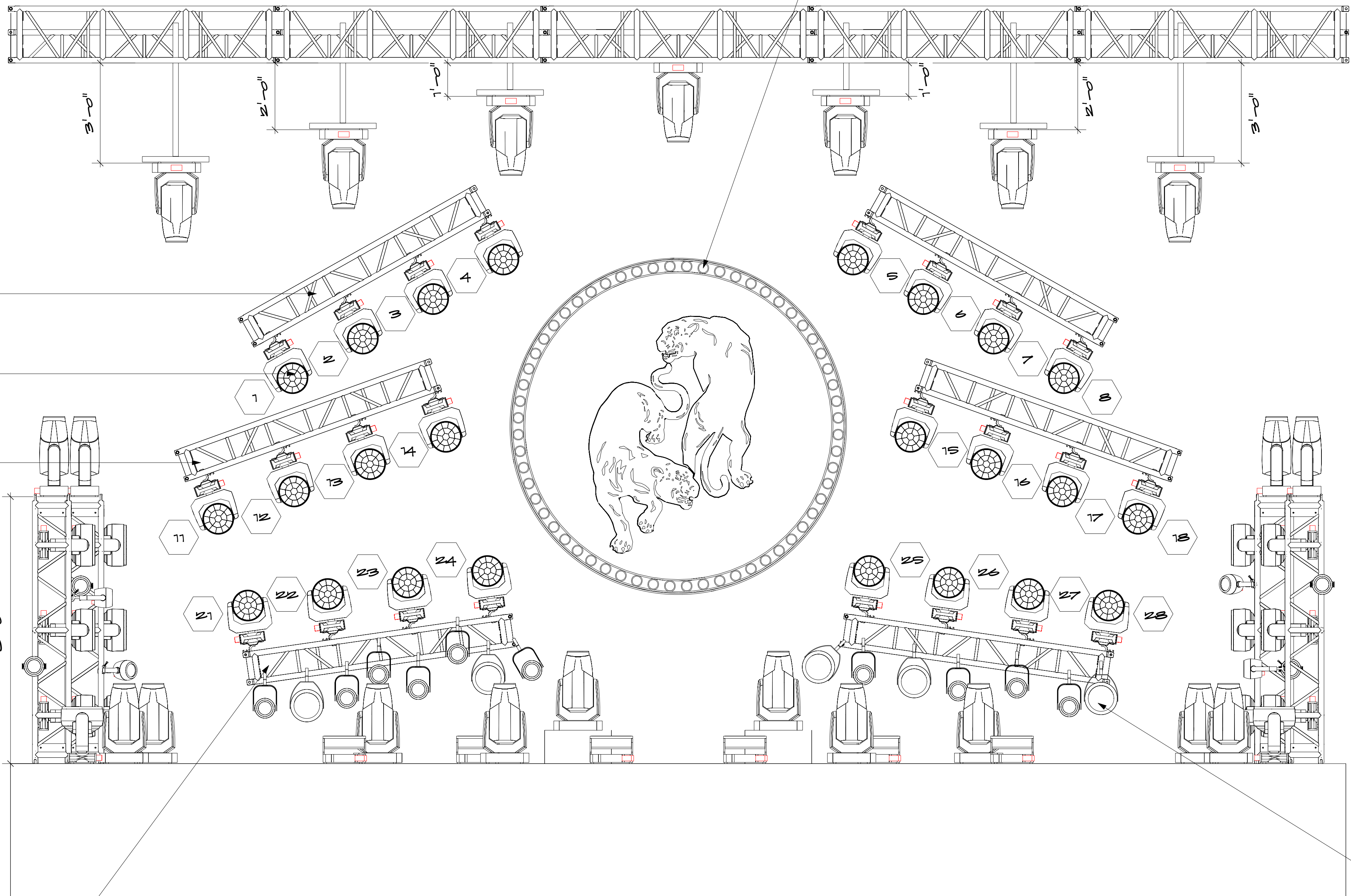
SCALE: AS NOTED  
PRINT SIZE: ARCH D 36"X24"

FRONT ELEVATION

DRAFTED BY: MJ / PH / JW  
DATE: 7/7/21 PLATE: 3 OF 6  
TIME: 3:02:22 PM



- 1001 → 1004 AUDIENCE-FACING QLP KNY DOT (SEE PLATE 6 FOR DETAIL)
- 1201 → 1236 DOWNSTAGE DRUM PERIMETER LED CHANNELS
- 1301 → 1336 UPSTAGE DRUM PERIMETER LED CHANNELS
- 1401 → 1420 LEFT PUMA CHANNELS
- 1501 → 1520 RIGHT PUMA CHANNELS
- ALL PUMA WALL  
INTERNAL LIGHTING  
RGBV 8-BIT (BY OTHERS)



TOP SPIDER WHISKER TRUSS  
TAILS DOWN FROM UPSTAGE  
LIGHTING TRUSS

ALL SPIDERS TO PRE-RIG TO 8'  
TRUSS SECTIONS WITH BASE TURNED  
90° TO ENSURE MOST NARROW  
STORAGE POSITION

MIDDLE SPIDER WHISKER TRUSS  
TAILS DOWN FROM BACKDROP TRUSS

BOTTOM SPIDER WHISKER TRUSS  
MOUNTS TO SCENIC CART OR TYLER CR -  
DISCUSS WITH DESIGNER

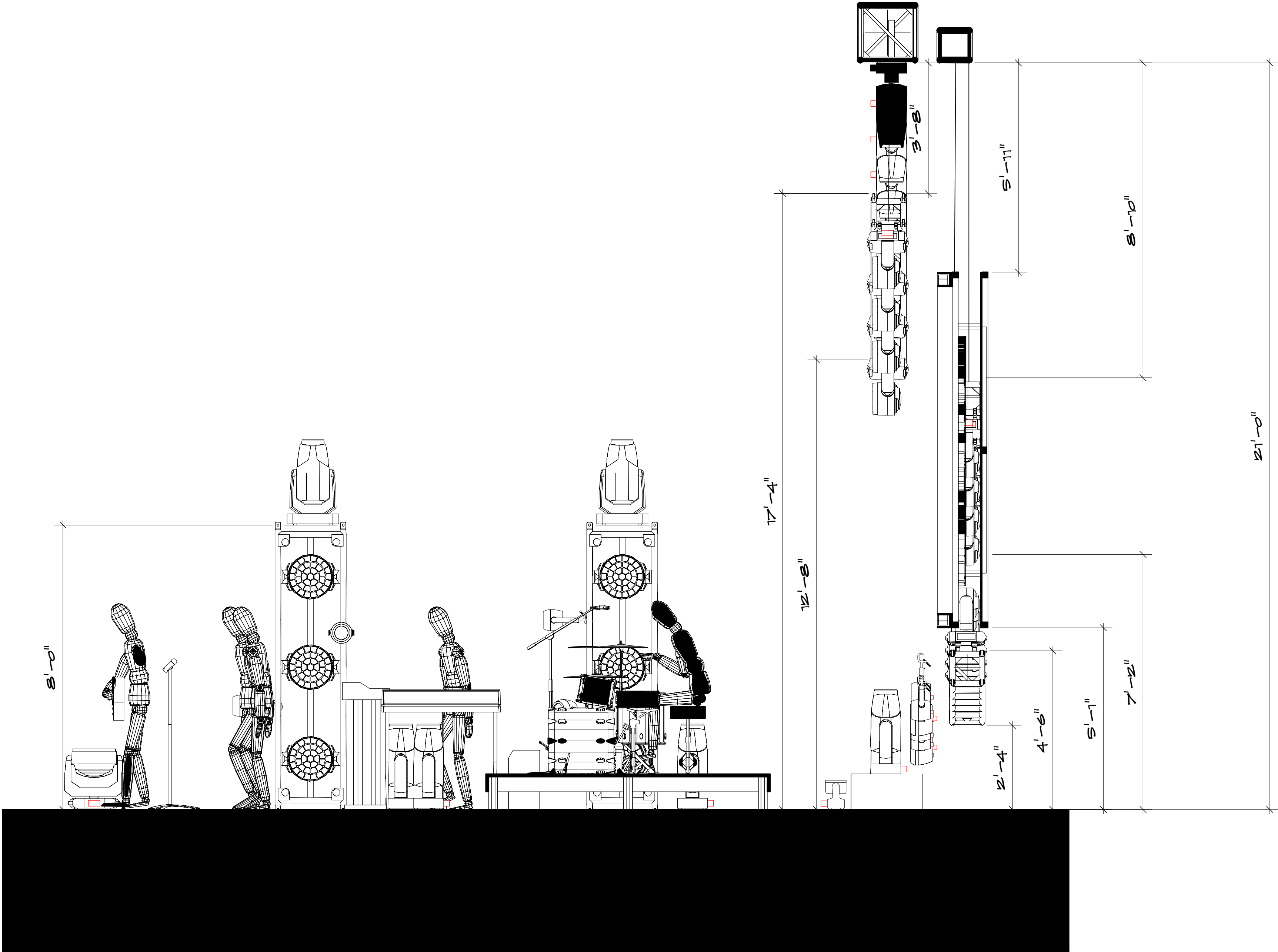
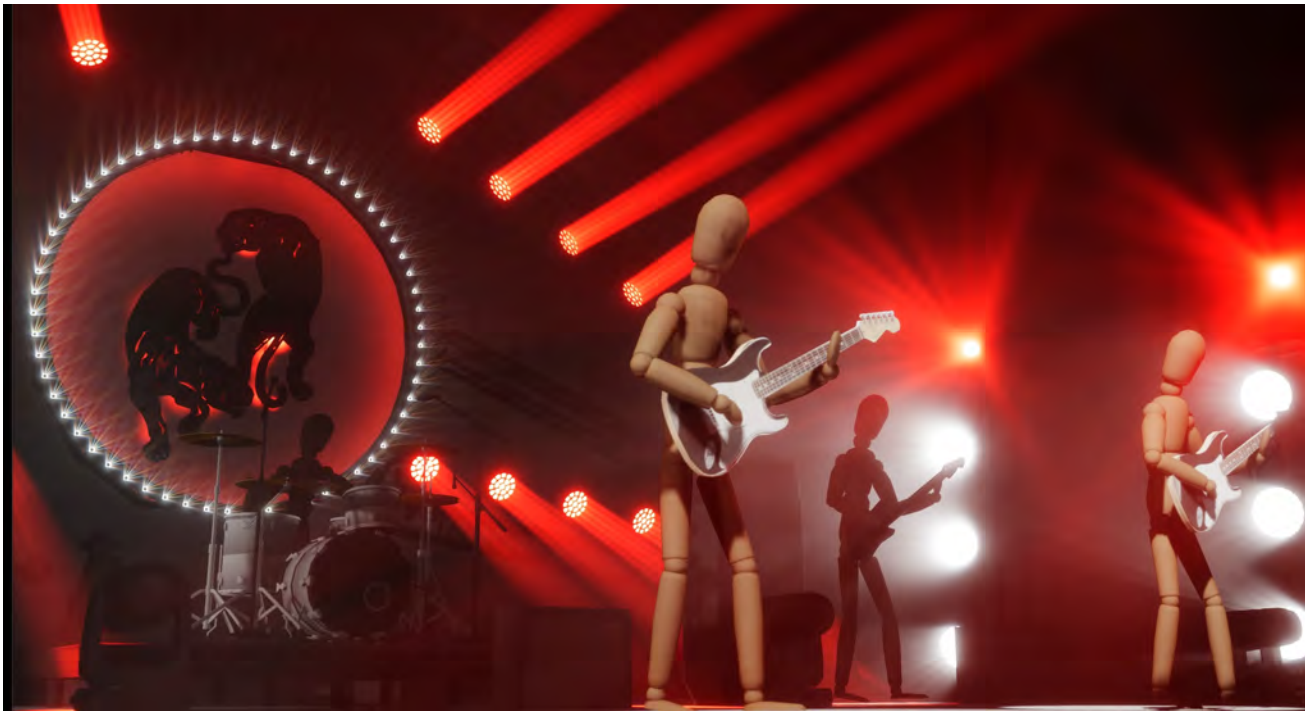
UPSTAGE STRIKE 1 & STRIKE P38  
FIXTURES TO BE DOTTED UPSTAGE  
PLACEMENT TBD BY DESIGNER  
SAMPLE POSITION SHOWN  
SEE PLATE 5 FOR CHANNELS

1 FRONT ELEVATION  
SCALE: 1/2" = 1'-0"

2"

FULL SCALE PRINT REFERENCE





1 SECTION  
SCALE: 1/2" = 1'-0"

E26

LIGHTING & PRODUCTION DESIGN

SYMBOLS

ROBE TARRANTULA  
MODE 4 (183 CHANNEL)  
[SLIM ARM SIDE COVERS]

ROBE SPIDER  
MODE 4 (90 CHANNEL)

ROBE ESPRITE  
MODE 1 (49 CHANNEL)

GLP JDC1  
MODE 3 (68 CHANNEL)

CHAUVET STRIKE 1  
6 CHANNEL MODE

CHAUVET STRIKE P38  
6 CHANNEL MODE

GLP KNY DOT  
POWER SUPPLY IN  
MODE 7 (202 CHANNEL)

KEY

1

FIXTURE NUMBER

NOTES:

REVISIONS:  
7/7/2021 CUT STRIKE CANNON  
7/7/2021 CUT US LIGHTING TRUSS WHISKER  
ADJUSTED WHISKER HEIGHTS  
TOP WHISKER MOVED 6" ONSTAGE  
ADDED LOCAL PROVISIONS  
ADDED T-BARS TO FIXTURES 101-103,  
105-107

THIS DRAWING REPRESENTS VISUAL CONCEPTS, CONSTRUCTION & MOUNTING SUGGESTIONS ONLY. IT DOES NOT REPLACE THE KNOWLEDGE AND ADVICE OF A QUALIFIED STRUCTURAL OR ELECTRICAL ENGINEER. THE DESIGNER IS UNQUALIFIED TO DETERMINE THE STRUCTURAL OR ELECTRICAL APPROPRIATENESS OF THIS DESIGN AND WILL NOT ASSUME RESPONSIBILITY FOR IMPROPER ENGINEERING OR USE. ALL INFO SUBJECT TO CHANGE ON SHORT NOTICE

BLACK PUMAS 2021 TOUR

LIGHTING/PRODUCTION DESIGN BY:  
MARC JANOVITZ  
MARC@E26DESIGN.COM

TOUR DIRECTOR:  
JOHN MOFFAT  
JOHN@TENATOMS.COM

SCALE: AS NOTED  
PRINT SIZE: ARCH D 36"X24"

SECTION

DRAFTED BY: MJ / PH / JW

DATE: 7/7/21 PLATE: 4 OF 6  
TIME: 3:02:31 PM



SYMBOLS

ROBE TARRANTULA  
MODE 4 (183 CHANNEL)  
[SLIM ARM SIDE COVERS]

ROBE SPIDER  
MODE 4 (90 CHANNEL)

ROBE ESPRITE  
MODE 1 (49 CHANNEL)

GLP JDC1  
MODE 3 (68 CHANNEL)

CHAUVET STRIKE 1  
6 CHANNEL MODE

CHAUVET STRIKE P38  
6 CHANNEL MODE

GLP KNY DOT  
POWER SUPPLY IN  
MODE 7 (202 CHANNEL)

KEY

1  
FIXTURE NUMBER

NOTES:

REVISIONS:  
7/7/2021 CUT STRIKE CANNON  
CUT US LIGHTING TRUSS WHISKER  
ADJUSTED WHISKER HEIGHTS  
TOP WHISKER MOVED 6" ONSTAGE  
ADDED LOCAL PROVISIONS  
ADDED T-BARS TO FIXTURES 901-903,  
905-907

THIS DRAWING REPRESENTS VISUAL CONCEPTS, CONSTRUCTION & MOUNTING SUGGESTIONS ONLY. IT DOES NOT REPLACE THE KNOWLEDGE AND ADVICE OF A QUALIFIED STRUCTURAL OR ELECTRICAL ENGINEER. THE DESIGNER IS UNQUALIFIED TO DETERMINE THE STRUCTURAL OR ELECTRICAL APPROPRIATENESS OF THIS DESIGN AND WILL NOT ASSUME RESPONSIBILITY FOR IMPROPER ENGINEERING OR USE. ALL INFO SUBJECT TO CHANGE ON SHORT NOTICE



BLACK PUMAS 2021 TOUR

LIGHTING/PRODUCTION DESIGN BY:  
MARC JANOVITZ  
MARC@E26DESIGN.COM

TOUR DIRECTOR:  
JOHN MOFFAT  
JOHN@TENATOMS.COM

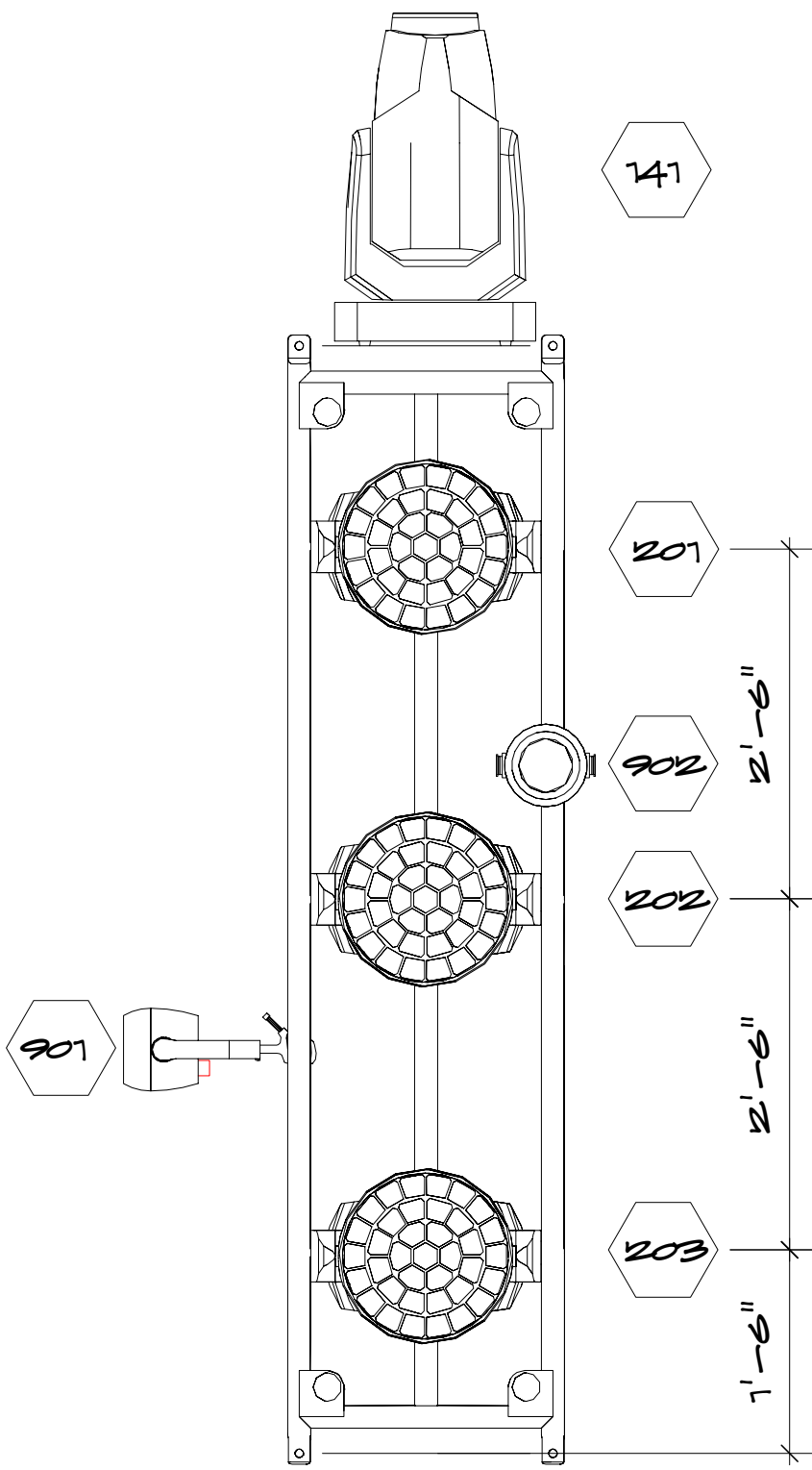
SCALE: AS NOTED  
PRINT SIZE: ARCH D 36"X24"

CIT CART/STRIKE DETAIL

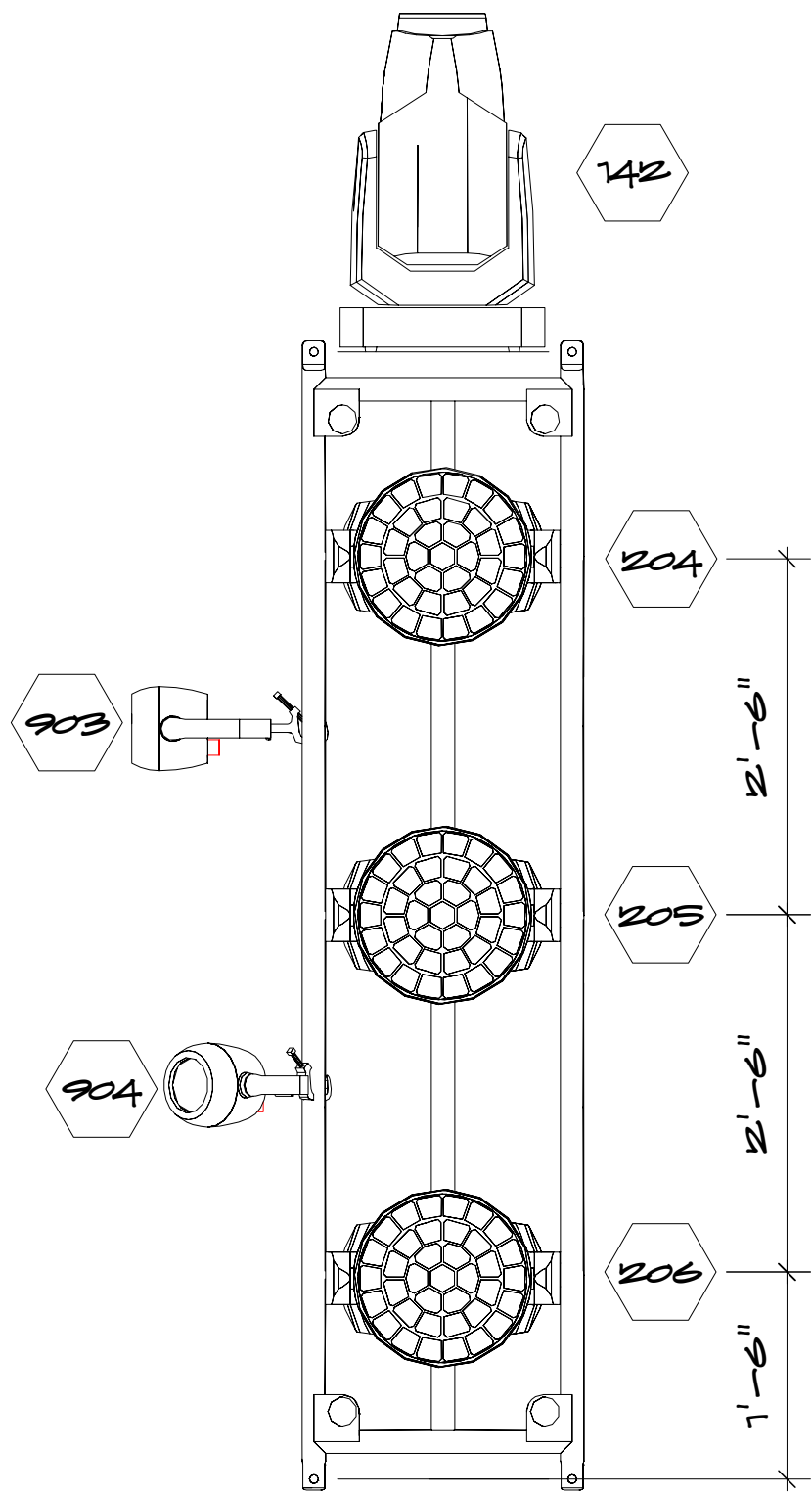
DRAFTED BY: MJ / PH / JW

DATE: 7/7/21 PLATE: 5 OF 6  
TIME: 3:02:33 PM

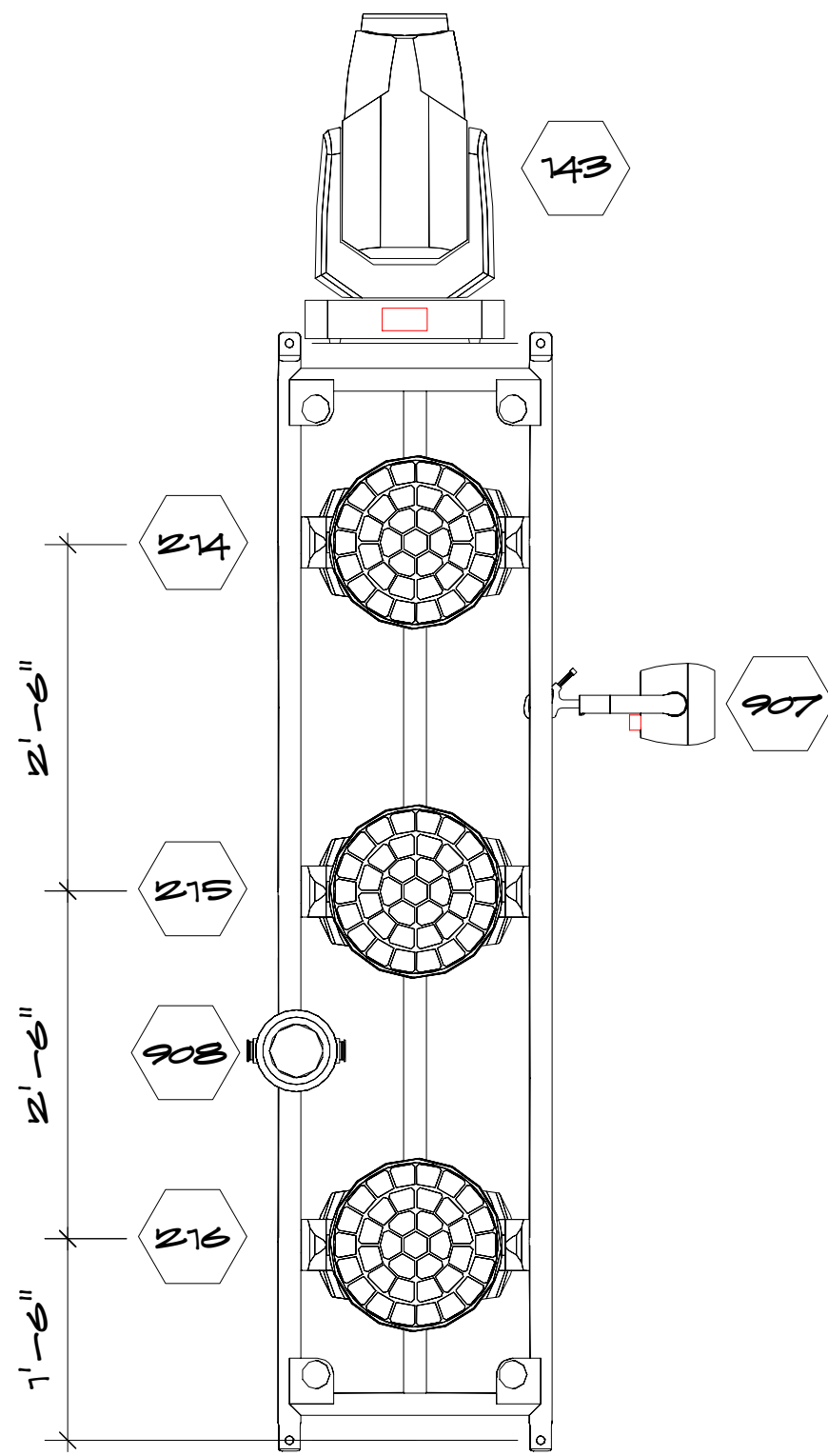
2"  
FULL SCALE PRINT REFERENCE



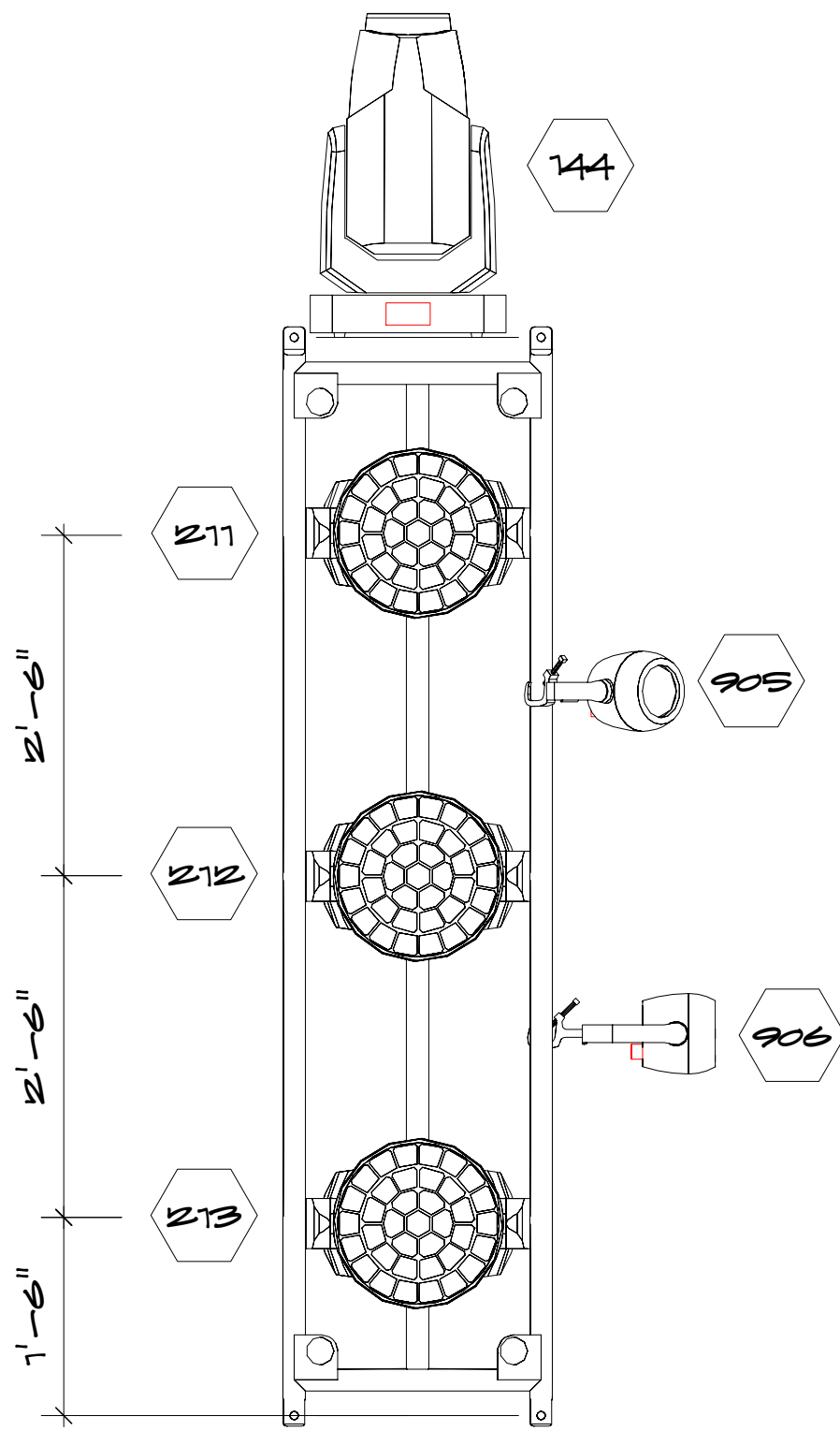
1 TOWER 1 DETAIL  
SCALE: 3/4" = 1'-0"



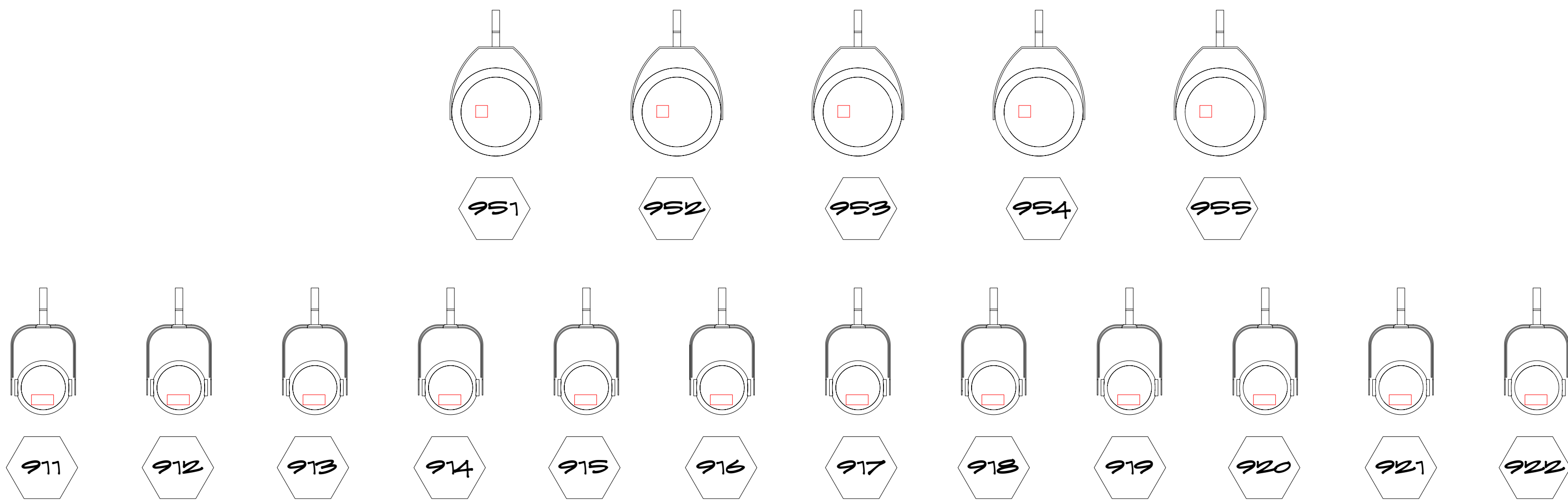
2 TOWER 2 DETAIL  
SCALE: 3/4" = 1'-0"



3 TOWER 3 DETAIL  
SCALE: 3/4" = 1'-0"



4 TOWER 4 DETAIL  
SCALE: 3/4" = 1'-0"

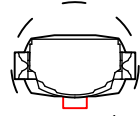


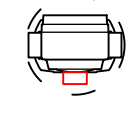
5 UPSTAGE STRIKE CHANNELS  
SCALE: 1" = 1'-0"

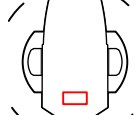
UPSTAGE STRIKE 1 & STRIKE P38  
PLACEMENT TED BY DESIGNER

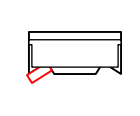


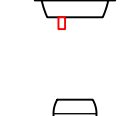
**SYMBOLS**

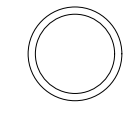
 ROBE TARRANTULA  
MODE 4 (183 CHANNEL)  
[SLIM ARM SIDE COVERS]


 ROBE SPIDER  
MODE 4 (90 CHANNEL)

 ROBE ESPRITE  
MODE 1 (49 CHANNEL)

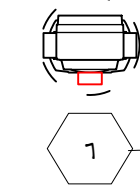
 QLP JRC1  
MODE 3 (68 CHANNEL)

 CHAUVET STRIKE 1  
6 CHANNEL MODE

 CHAUVET STRIKE P38  
6 CHANNEL MODE

 QLP KNY DOT  
POWER SUPPLY IN  
MODE 7 (202 CHANNEL)

**KEY**

 1  
FIXTURE NUMBER

NOTES:

REVISIONS:  
7/7/2021 CUT STRIKE CANNON  
CUT US LIGHTING TRUSS WHISKER  
ADJUSTED WHISKER HEIGHTS  
TOP WHISKER MOVED 6" ONSTAGE  
ADDED LOCAL PROVISIONS  
ADDED T-BARS TO FIXTURES 101-103,  
105-107

THIS DRAWING REPRESENTS VISUAL CONCEPTS, CONSTRUCTION & MOUNTING SUGGESTIONS ONLY. IT DOES NOT REPLACE THE KNOWLEDGE AND ADVICE OF A QUALIFIED STRUCTURAL OR ELECTRICAL ENGINEER. THE DESIGNER IS UNQUALIFIED TO DETERMINE THE STRUCTURAL OR ELECTRICAL APPROPRIATENESS OF THIS DESIGN AND WILL NOT ASSUME RESPONSIBILITY FOR IMPROPER ENGINEERING OR USE. ALL INFO SUBJECT TO CHANGE ON SHORT NOTICE



BLACK PUMAS 2021 TOUR

LIGHTING/PRODUCTION DESIGN BY:  
MARC JANOVITZ  
MARC@E26DESIGN.COM

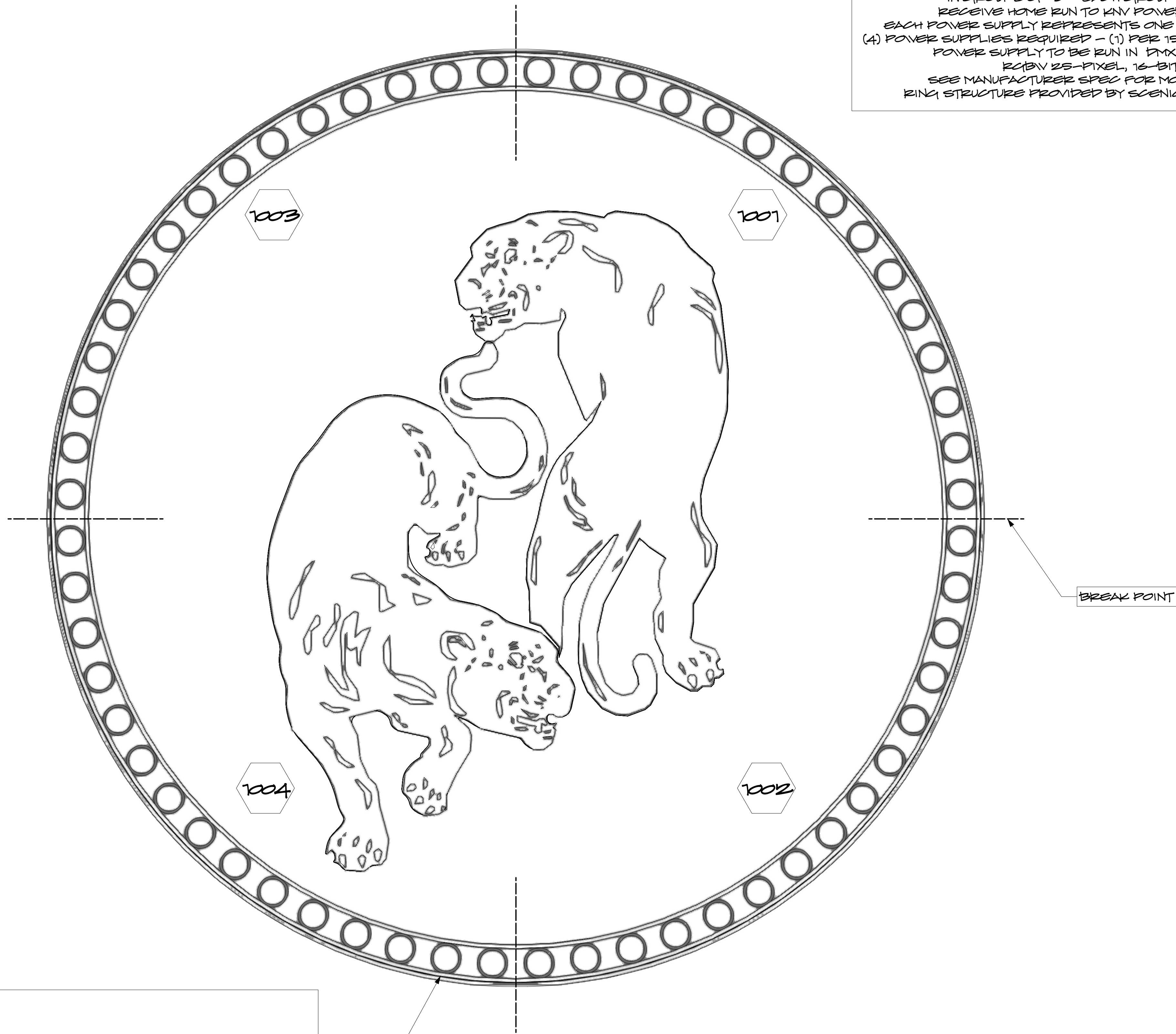
TOUR DIRECTOR:  
JOHN MOFFAT  
JOHN@TENATOMS.COM

SCALE: AS NOTED  
PRINT SIZE: ARCH D 36"X24"

PUMA DRUM LIGHTING

DRAFTED BY: MJ / PH / JW  
DATE: 7/7/21 PLATE: 6 OF 6  
TIME: 3:02:33 PM

KNY DOT FIXTURES DAISY CHAIN TOGETHER  
IN GROUPS OF 5 - EACH GROUP OF 5 TO  
RECEIVE HOME RUN TO KNY POWER SUPPLY  
EACH POWER SUPPLY REPRESENTS ONE FIXTURE NUMBER  
(4) POWER SUPPLIES REQUIRED - (1) PER 15 FIXTURE QUADRANT  
POWER SUPPLY TO BE RUN IN DMX MODE 7 -  
RGBV 25-PIXEL, 16-BIT  
SEE MANUFACTURER SPEC FOR MORE DETAIL  
RING STRUCTURE PROVIDED BY SCENIC FABRICATOR



1 PUMA DRUM LIGHTING DETAIL  
SCALE: 1 1/2" = 1'-0"

PUMA DRUM INTERNAL LIGHTING INSTALLER:  
CJ OLIVE PRODUCTIONS  
SCOTT MOORE - SCOTT@CJOLIVEPRO.COM  
NICK HOLDBROOKS - NICK@CJOLIVEPRO.COM

PUMA DRUM STRUCTURAL FABRICATOR:  
GALLACHER STAGING  
JAMES MCKINNEY - JMK@GALLACHERSTAGING.COM  
BRYAN STUBBLEFIELD - BRYAN@GALLACHERSTAGING.COM

KNY DOT INSTALLATION BY GATEWAY LIGHTING

2"  
FULL SCALE PRINT REFERENCE