

SYMBOL KEY

ETC Source4 19deg 575WETC Source4 26deg 575WETC Source4 36deg 575WETC Source4 50deg 575WETC Source 4 LED Series 3 Lustr 18 50°ETC D60 Lustr SEUR35ETC D60 Lustr SEUR45Altman 6in FresPAR64-MFLARRI Junior 650ARRI Studio 2000 FresnelARRI Studio 5000 FresnelAltman Q-LitePracticalGAM Stik UpChauvet Maverick Force S ProfileColor Kinetics ColorBlaze TRX 72

LEGEND

Top HatUnit NumberBarn doorChannel

NOTES:

- Hang all units oriented as drawn
- Trims are measured from show deck to bottom of pipe unless otherwise noted
- Booms are dimensioned from show deck to side arm, all booms should be flanged to the deck
- Please see hookup for color and accessory information
- Please provide spare cuts of R132 and R119 for focus
- Check in with designer about boom and floor fixture placement before installation

The designer and assistant designers are responsible for visual aspects of the production only, and all specifications provided relate solely to the appearance of the lighting and not to matters of electrical or structural soundness and/or safety. The implementation of this design must comply with the most stringent applicable federal and local safety and fire codes. The designer is not qualified to determine electrical or structural appropriateness of the design and will not assume responsibility for damages resulting through improper engineering and/or implementation in the handling of the elements of the lighting design.

JAPHY WEIDEMAN

LIGHTING DESIGNER
japhy@me.com
(347) 564-2803

VLADIMIR

WRITTEN BY ERICA SHEFFER DIRECTED BY DANIEL SULLIVAN
MANHATTAN THEATRE CLUB

MANHATTAN THEATRE CLUB

STAGE 1

VLADIMIR

DIRECTED BY Daniel Sullivan
LIGHTING BY Japhy Weideman
SET BY Mark Wendland
COSTUMES BY Jess Goldstein
VIDEO BY Lucy Mackinnon
SOUND BY Dan Moses Schreier
ALD Sasha Finley
PRODUCTION MANAGER Celeste Lagrotteria
PRODUCTION ELECTRICIAN Dan Mullins

REVISION HISTORY

D	AVMF	UPDATES	9/28/24
C	AVMF	FOR HANG	8/12/24
B	AVMF	PRELIMINARY V2	8/8/24
A	AVMF	PRELIMINARY	8/5/24

Scale: 3/4"=1'-0"

Drawn By: AVMF

Date: 9/28/24

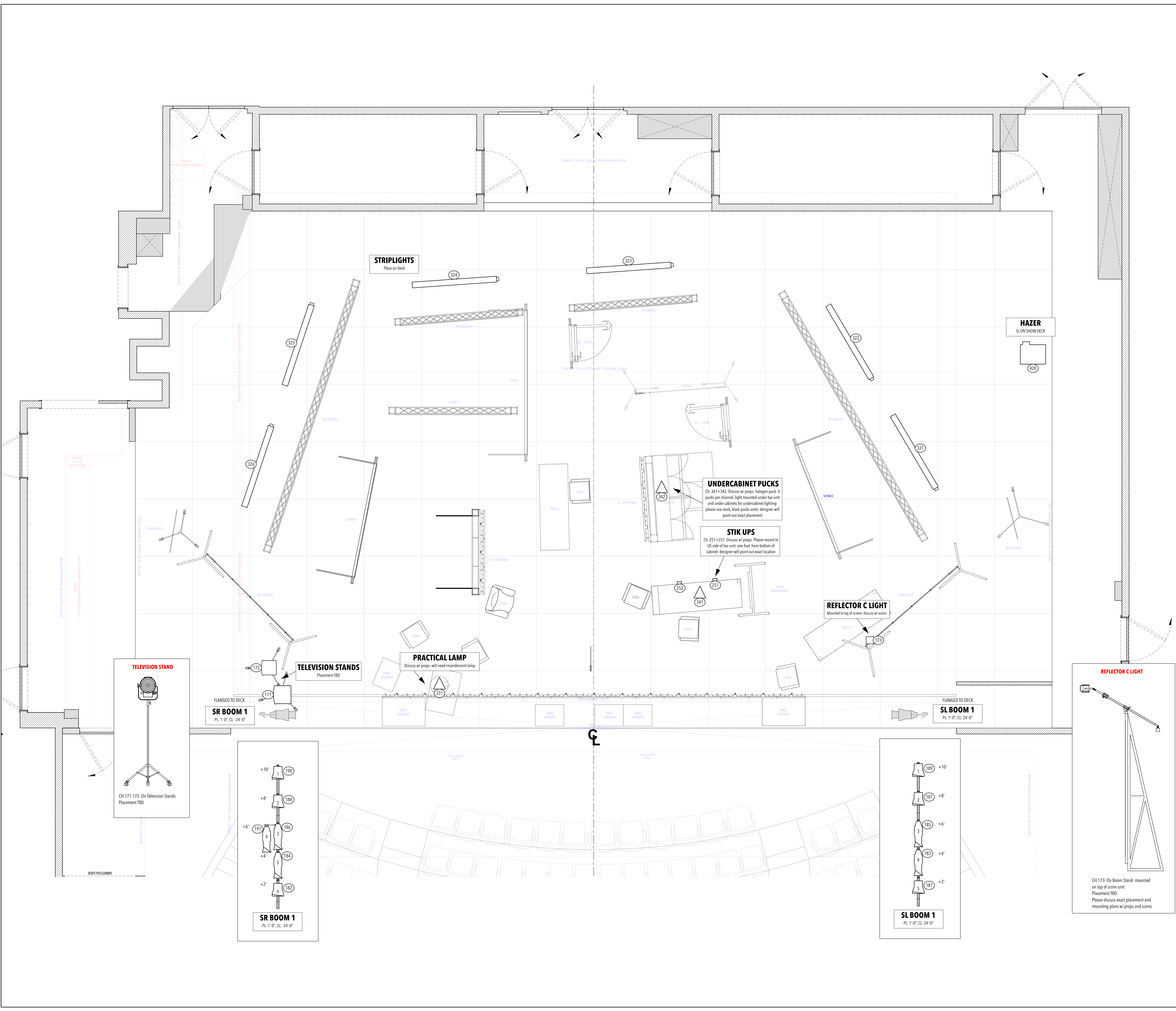
File name: VLADIMIR20249.22.vwx

Plate

1

Of 3

OVERHEAD



ETC Source4 19deg 575W

ETC Source4 26deg 575W

ETC Source4 36deg 575W

ETC Source4 50deg 575W

ETC Source 4 70deg 575W

ETC Source 4 LED Series 3 Lustr X8 50°

ETC D60 Lustr SELR35

ETC D60 Lustr SELR45

Altman 6in Fres

PAR64-MFL

ARRI Junior 650

ARRI Studio 2000 Fresnel

ARRI Studio 5000 Fresnel

Altman Q-Lite

Practical

GAM Stik Up

Chauvet Maverick Force S Profile

Color Kinetics ColorBlaze TRX 72

LEGEND

Top Hat

Unit Number

Channel

Barn door

NOTES:

- Hang all units oriented as drawn

- Trims are measured from show deck to bottom of pipe unless otherwise noted

- Booms are dimensioned from show deck to side arm, all booms should be flanged to the deck

- Please see hookup for color and accessory information

- Please provide spare cuts of R132 and R119 for focus

- Check in with designer about boom and floor fixture placement before installation

The designer and assistant designers are responsible for visual aspects of the production only, and all specifications provided relate solely to the appearance of the lighting and not to matters of electrical or structural soundness and/or safety. The implementation of this design must comply with the most stringent applicable federal and local safety and fire codes. The designer is not qualified to determine electrical or structural appropriateness of the design and will not assume responsibility for damages resulting through improper engineering and/or implementation in the handling of the elements of the lighting design.

VLADIMIR

WRITTEN BY ERINA SHEFFER

DIRECTED BY DANIEL SULLIVAN

MANHATTAN THEATRE CLUB

MANHATTAN THEATRE CLUB

STAGE 1

VLADIMIR

DIRECTED BY Daniel Sullivan

LIGHTING BY Japhy Weideman

SET BY Mark Wendland

COSTUMES BY Jess Goldstein

VIDEO BY Lucy Mackinnon

SOUND BY Dan Moses Schreier

ALD Sasha Finley

PRODUCTION MANAGER Celeste Lagrotteria

PRODUCTION ELECTRICIAN Dan Mullins

REVISION HISTORY

D	AVMF	UPDATES	9/28/24
C	AVMF	FOR HANG	8/12/24
B	AVMF	PRELIMINARY V2	8/8/24
A	AVMF	PRELIMINARY	8/5/24

Scale: 3/4"=1'-0"

Drawn By: AVMF

Date: 9/28/24

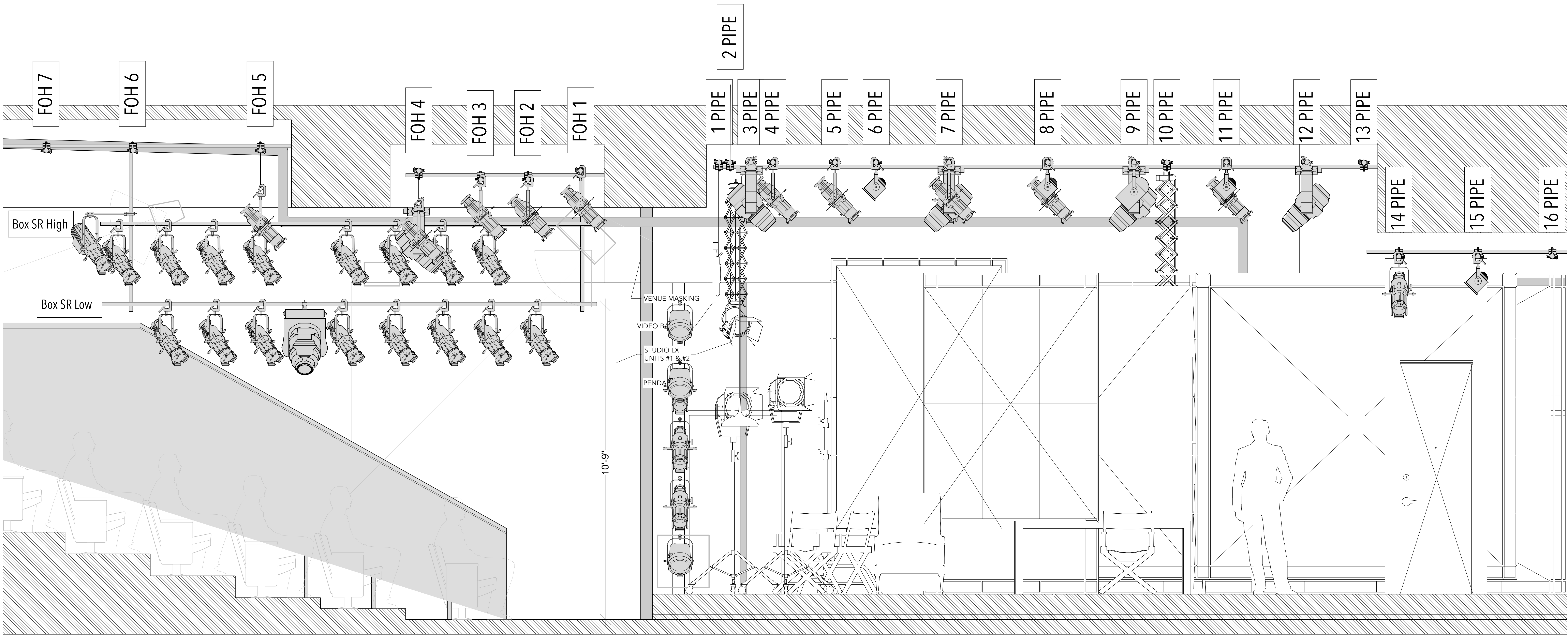
File name: VLADIMIR20249.22.vwx

Plate

2

Of 3

DECK



ETC Source4 19deg 575W

ETC Source4 26deg 575W

ETC Source4 36deg 575W

ETC Source4 50deg 575W

ETC Source 4 70deg 575W

ETC Source 4 LED Series 3 Lustr X8 50°

ETC D60 Lustr SELR35

ETC D60 Lustr SELR45

Altman 6in Fres

PAR64-MFL

ARRI Junior 650

ARRI Studio 2000 Fresnel

ARRI Studio 5000 Fresnel

Altman Q-Lite

Practical

GAM Stik Up

Chauvet Maverick Force S Profile

Color Kinetics ColorBlaze TRX 72

LEGEND

Top Hat

Unit Number

Barn door

Channel

NOTES:

- Hang all units oriented as drawn

- Trims are measured from show deck to bottom of pipe unless otherwise noted

- Booms are dimensioned from show deck to side arm, all booms should be flanged to the deck

- Please see hookup for color and accessory information

- Please provide spare cuts of R132 and R119 for focus

- Check in with designer about boom and floor fixture placement before installation

The designer and assistant designers are responsible for visual aspects of the production only, and all specifications provided relate solely to the appearance of the lighting and not to matters of electrical or structural soundness and/or safety. The implementation of this design must comply with the most stringent applicable federal and local safety and fire codes. The designer is not qualified to determine electrical or structural appropriateness of the design and will not assume responsibility for damages resulting through improper engineering and/or implementation in the handling of the elements of the lighting design.

JAPHY WEIDEMAN

LIGHTING DESIGNER

japhyw@me.com

(347) 564-2803

VLADIMIR

WRITTEN BY ERIKA SHEFFER

DIRECTED BY DANIEL SULLIVAN

MANHATTAN THEATRE CLUB

MANHATTAN THEATRE CLUB

STAGE 1

VLADIMIR

DIRECTED BY Daniel Sullivan

LIGHTING BY Japhy Weideman

SET BY Mark Wendland

COSTUMES BY Jess Goldstein

VIDEO BY Lucy Mackinnon

SOUND BY Dan Moses Schreier

ALD Sasha Finley

PRODUCTION MANAGER Celeste Lagrotteria

PRODUCTION ELECTRICIAN Dan Mullins

REVISION HISTORY

D	AVMF	UPDATES	9/28/24
C	AVMF	FOR HANG	8/12/24
B	AVMF	PRELIMINARY V2	8/8/24
A	AVMF	PRELIMINARY	8/5/24

Scale: 3/4"=1'-0"

Drawn By: AVMF

Date: 9/28/24

File name: VLADIMIR20249.22.vwx

Plate 3

Of 3

SECTION