

**KEY TO SYMBOLS**

- 14' ETC SOURCE 4 750w
- 19' ETC SOURCE 4 750w
- 26' ETC SOURCE 4 750w
- 36' ETC SOURCE 4 750w
- 50' ETC SOURCE 4 750w
- 14' ETC S4 LUSTR 161w
- 19' ETC S4 LUSTR 161w
- 26' ETC S4 LUSTR 161w
- 36' ETC S4 LUSTR 161w
- 50' ETC S4 LUSTR 161w
- SOURCE 4 PAR VN9P 1750w
- VARI-LITE VL3600 PROFILE IP 1500w
- MARTIN MAC ULTRA PERFORMANCE 1450w
- GLP IMPRESSION X5 710w
- GLP IMPRESSION X5 COMPACT 300w
- PRG ICON EDGE 470w
- AYRTON DIABLO-S 550w
- PRG SL WASH 340w
- GLP IMPRESSION X4 BAR 20 230w
- GLP IMPRESSION FRIO BAR 800w
- THB SOLARIS FLARE Q 450w
- ML PHOTON 200w

THE WHO'S TOMMY BROADWAY  
NEDERLANDER THEATRE



DIRECTED BY  
DES MCANUFF  
SCENIC DESIGNER  
DAVID KORINS  
LIGHTING DESIGNER  
AMANDA ZIEVE  
ASSOCIATE LIGHTING DESIGNER  
BRANDON H ROSEN

**OVERHEAD**

SCALE: 1/2" = 1'-0" EXCEPT WHERE NOTED  
DATE: 03/26/2024 FROZEN  
DRAWN BY: BHR  
PLATE NO. 1  
OF 10

**NOTES**

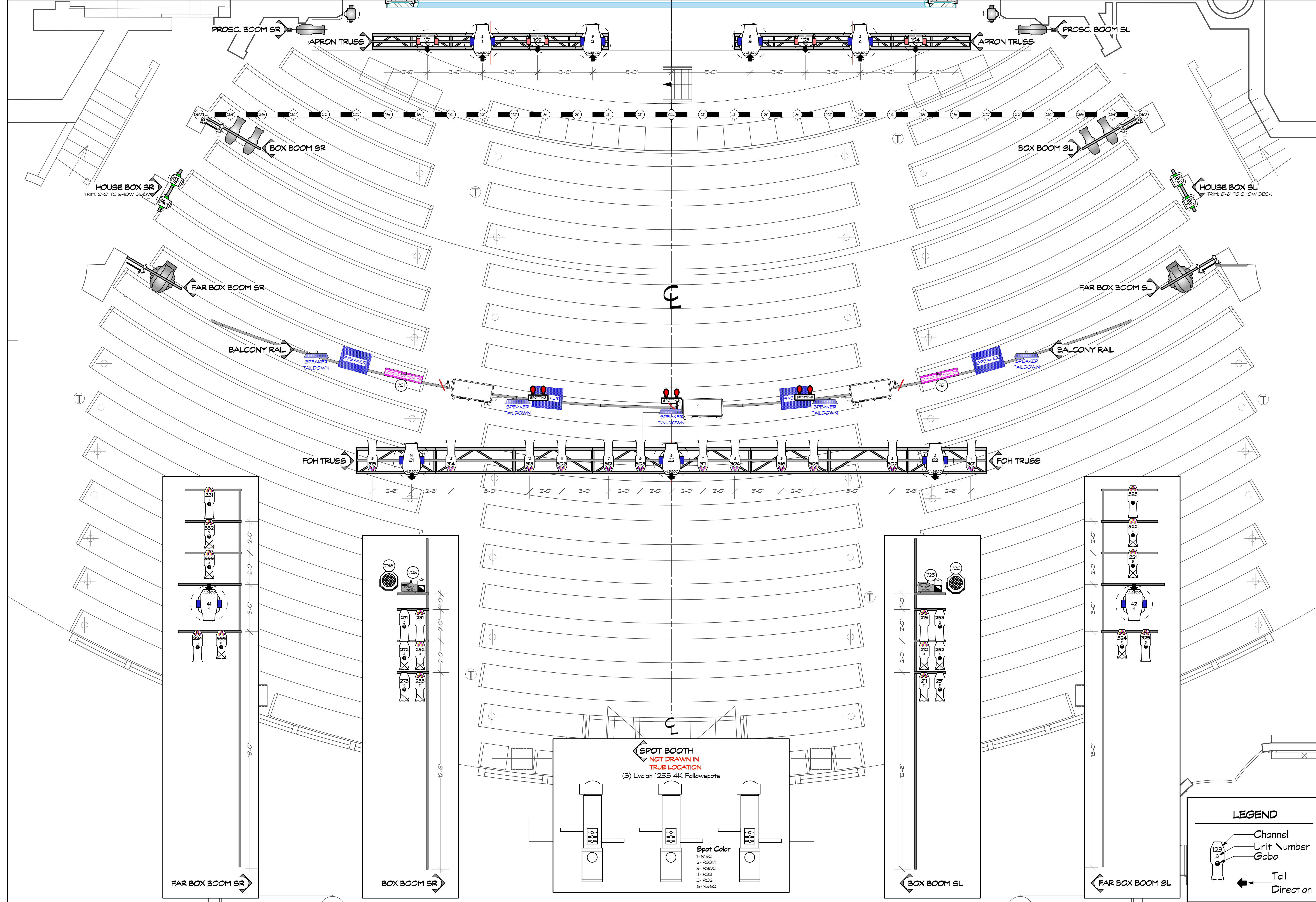
- Hang all units on 18" centers unless noted.
- Refer to hook up for all mode, color, template, barn door and top hat information.
- No substitutions without designers approval.
- Please have the hazer setup for focus.
- Please have all color and templates dropped prior to focus.
- All trims are to house deck, unless otherwise specified.

This drawing represents design intent and concept.

The designer and assistant designers are responsible for visual aspects of the production only, and all specifications provided relate solely to the appearance of the lighting and not to matters of electrical or structural soundness and/or safety. The implementation of this design must comply with the most stringent applicable federal and local safety and fire codes. The designer is not qualified to determine electrical or structural appropriateness of the design and will not assume responsibility for damages resulting through improper engineering and/or implementation in the handling of the elements of the lighting design. The designer agrees to make prompt correcting alterations to any specification found to be incompatible with proper safety precautions.

**LEGEND**

- Channel
- Unit Number
- Gobo
- Tail Direction



### KEY TO SYMBOLS

	14' ETC SOURCE 4 750w
	19' ETC SOURCE 4 750w
	26' ETC SOURCE 4 750w
	36' ETC SOURCE 4 750w
	50' ETC SOURCE 4 750w
	14' ETC S4 LUSTR 161w
	19' ETC S4 LUSTR 161w
	26' ETC S4 LUSTR 161w
	36' ETC S4 LUSTR 161w
	50' ETC S4 LUSTR 161w
	SOURCE 4 PAR VN5P 1750w
	VARI-LITE VL3600 PROFILE IP 1500w
	MARTIN MAC ULTRA PERFORMANCE 1450w
	GLP IMPRESSION X5 710w
	GLP IMPRESSION X5 COMPACT 300w
	PRG ICON EDGE 470w
	AYRTON DIABLO-S 550w
	PRG SL WASH 340w
	GLP IMPRESSION X4 BAR 20 230w
	GLP IMPRESSION FRIO BAR 800w
	TMB SOLARIS FLARE Q 450w
	ML PHOTON 200w

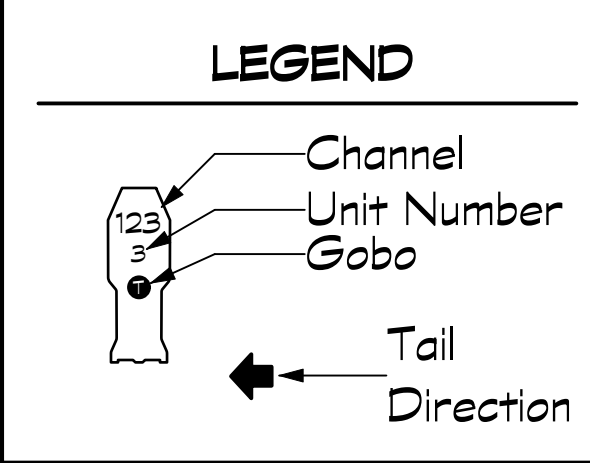
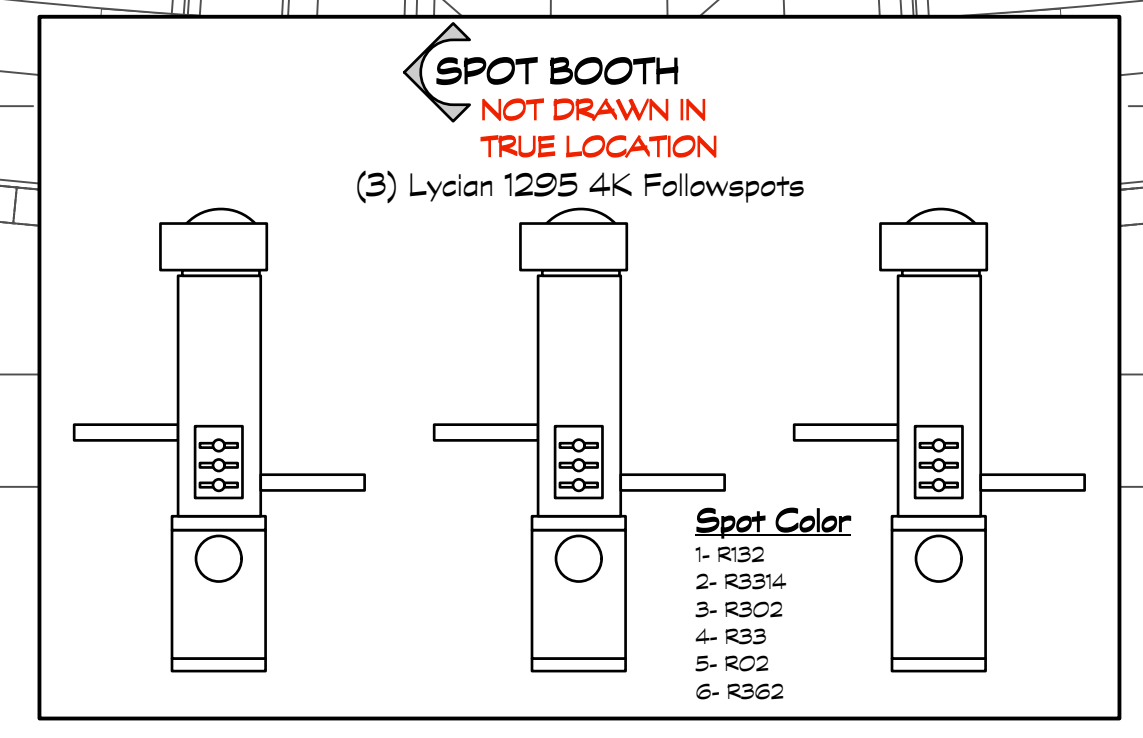
THE WHO'S TOMMY BROADWAY  
NEDERLANDER THEATRE



DIRECTED BY  
DES MCANUFF  
SCENIC DESIGNER  
DAVID KORINS  
LIGHTING DESIGNER  
AMANDA ZIEVE  
ASSOCIATE LIGHTING DESIGNER  
BRANDON H ROSEN

### FOH PLAN

SCALE: 3/8" = 1'-0" EXCEPT WHERE NOTED  
DATE: 03/26/2024 FROZEN  
DRAWN BY: BHR  
PLATE NO. 2 OF 10



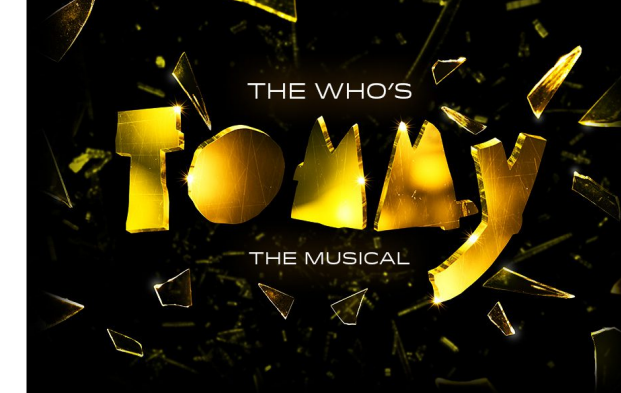
- #### NOTES
- Hang all units on 18" centers unless noted.
  - Refer to hook up for all mode, color, template, barn door and top hat information.
  - No substitutions without designers approval.
  - Please have the hazer setup for focus.
  - Please have all color and templates dropped prior to focus.
  - All trims are to house deck, unless otherwise specified.

This drawing represents design intent and concept.  
The designer and assistant designers are responsible for visual aspects of the production only, and all specifications provided relate solely to the appearance of the lighting and not to matters of electrical or structural soundness and/or safety. The implementation of this design must comply with the most stringent applicable federal and local safety and fire codes. The designer is not qualified to determine electrical or structural appropriateness of the design and will not assume responsibility for damages resulting through improper engineering and/or implementation in the handling of the elements of the lighting design. The designer agrees to make prompt correcting alterations to any specification found to be incompatible with proper safety precautions.

**KEY TO SYMBOLS**

	14' ETC SOURCE 4 750w
	19' ETC SOURCE 4 750w
	26' ETC SOURCE 4 750w
	36' ETC SOURCE 4 750w
	50' ETC SOURCE 4 750w
	14' ETC S4 LUSTR 161w
	19' ETC S4 LUSTR 161w
	26' ETC S4 LUSTR 161w
	36' ETC S4 LUSTR 161w
	50' ETC S4 LUSTR 161w
	SOURCE 4 PAR VN5P 1750w
	VARI-LITE VL3600 1500w
	MARTIN MAC ULTRA PERFORMANCE 1450w
	GLP IMPRESSION X5 710w
	GLP IMPRESSION X5 COMPACT 300w
	PRG ICON EDGE 470w
	AYRTON DIABLO-S 550w
	PRG SL WASH 340w
	GLP IMPRESSION X4 BAR 20 230w
	GLP IMPRESSION FRIO BAR 800w
	THB SOLARIS FLARE Q- 450w
	ML PHOTON 200w

THE WHO'S TOMMY BROADWAY  
NEDERLANDER THEATRE



DIRECTED BY  
DES MCANUFF

SCENIC DESIGNER  
DAVID KORINS

LIGHTING DESIGNER  
AMANDA ZIEVE

ASSOCIATE LIGHTING DESIGNER  
BRANDON H ROSEN

**BOOMS & LADDERS**

SCALE: 1/2" = 1'-0" EXCEPT WHERE NOTED

DATE: 03/26/2024 FROZEN

DRAWN BY: BHR

PLATE NO.  
**3**  
OF 10

\*\*\*Dimensioned from Show Deck to Center of Lense or Pipe  
**STAGE RIGHT**

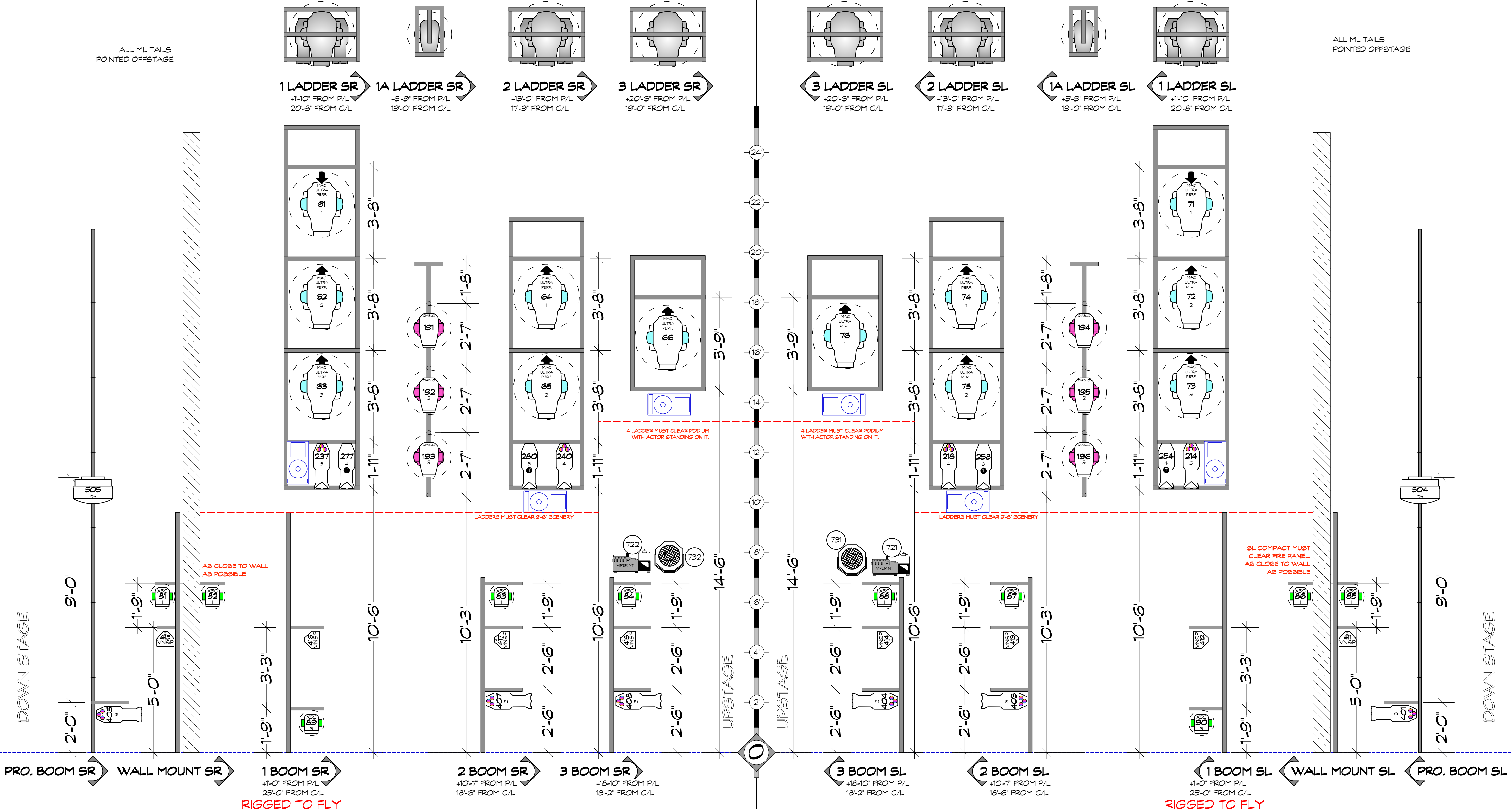
**SR BOOMS & LADDERS**

**SL BOOMS & LADDERS**

\*\*\*Dimensioned from Show Deck to Center of Lense or Pipe  
**STAGE LEFT**

ALL ML TAILS  
POINTED OFFSTAGE

ALL ML TAILS  
POINTED OFFSTAGE



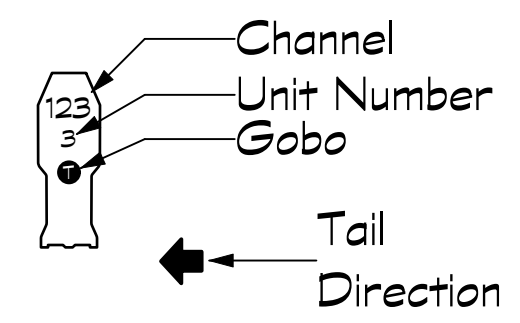
**NOTES**

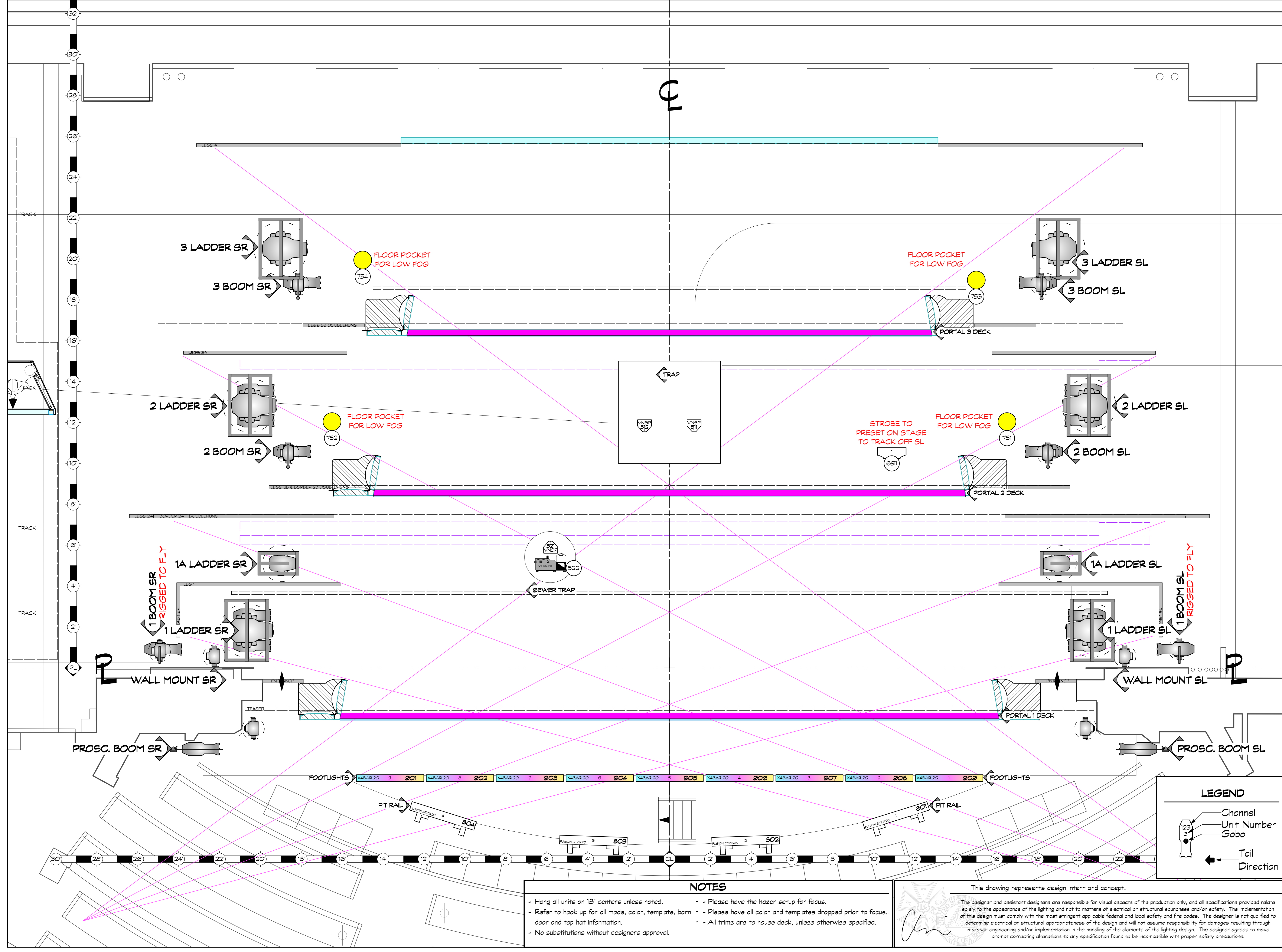
- Hang all units on 18" centers unless noted.
- Refer to hook up for all mode, color, template, barn door and top hat information.
- No substitutions without designers approval.
- Please have the hazer setup for focus.
- Please have all color and templates dropped prior to focus.
- All trims are to house deck, unless otherwise specified.

This drawing represents design intent and concept.

The designer and assistant designers are responsible for visual aspects of the production only, and all specifications provided relate solely to the appearance of the lighting and not to matters of electrical or structural soundness and/or safety. The implementation of this design must comply with the most stringent applicable federal and local safety and fire codes. The designer is not qualified to determine electrical or structural appropriateness of the design and will not assume responsibility for damages resulting through improper engineering and/or implementation in the handling of the elements of the lighting design. The designer agrees to make prompt correcting alterations to any specification found to be incompatible with proper safety precautions.

**LEGEND**

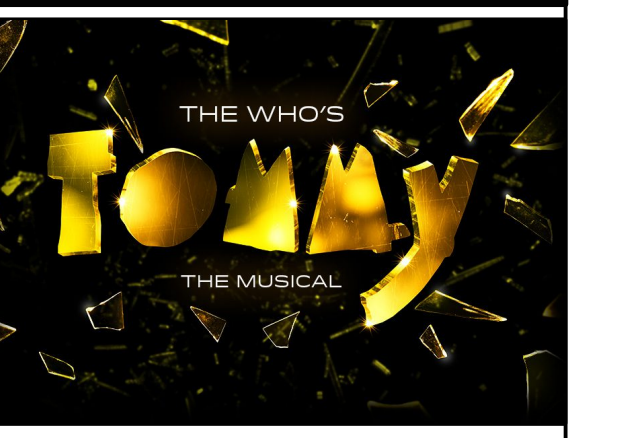




**KEY TO SYMBOLS**

	14' ETC SOURCE 4 750w
	19' ETC SOURCE 4 750w
	26' ETC SOURCE 4 750w
	36' ETC SOURCE 4 750w
	50' ETC SOURCE 4 750w
	14' ETC S4 LUSTR 181w
	19' ETC S4 LUSTR 181w
	26' ETC S4 LUSTR 181w
	36' ETC S4 LUSTR 181w
	50' ETC S4 LUSTR 181w
	SOURCE 4 PAR VN5P 1750w
	VARI-LITE VL3600 PROFILE IP 1800w
	MARTIN MAC ULTRA PERFORMANCE 1450w
	GLP IMPRESSION X5 710w
	GLP IMPRESSION X5 COMPACT 300w
	PRG ICON EDGE 470w
	AYRTON DIABLO-S 550w
	PRG SL WASH 340w
	GLP NABAR 20 9 IMPRESSION X4 BAR 20 230w
	GLP IMPRESSION PRIO 9 BAR 800w
	TMB SOLARIS FLARE Q 450w
	ML PHOTON 200w

THE WHO'S TOMMY BROADWAY  
NEDERLANDER THEATRE



DIRECTED BY  
DES MCANUFF  
SCENIC DESIGNER  
DAVID KORINS  
LIGHTING DESIGNER  
AMANDA ZIEVE  
ASSOCIATE LIGHTING DESIGNER  
BRANDON H ROSEN

**DECK PLAN**

SCALE: 1/2" = 1'-0" EXCEPT WHERE NOTED  
DATE: 03/26/2024 FROZEN  
DRAWN BY: BHR  
PLATE NO. 4 OF 10

**NOTES**

- Hang all units on 18" centers unless noted.
- Refer to hook up for all mode, color, template, barn door and top hat information.
- No substitutions without designers approval.
- Please have the hazer setup for focus.
- Please have all color and templates dropped prior to focus.
- All trims are to house deck, unless otherwise specified.

This drawing represents design intent and concept.

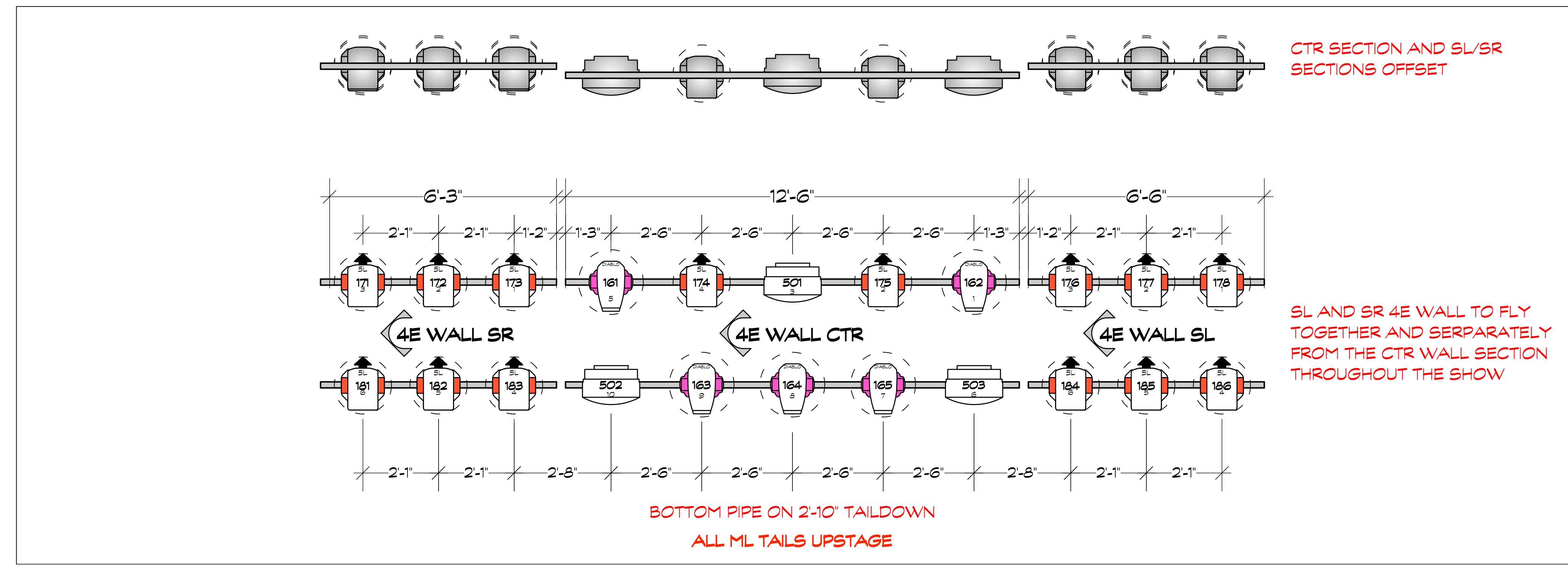
The designer and assistant designers are responsible for visual aspects of the production only, and all specifications provided relate solely to the appearance of the lighting and not to matters of electrical or structural soundness and/or safety. The implementation of this design must comply with the most stringent applicable federal and local safety and fire codes. The designer is not qualified to determine electrical or structural appropriateness of the design and will not assume responsibility for damages resulting through improper engineering and/or implementation in the handling of the elements of the lighting design. The designer agrees to make prompt correcting alterations to any specification found to be incompatible with proper safety precautions.

**LEGEND**

- Channel
- Unit Number
- Gobo
- Tail Direction

**KEY TO SYMBOLS**

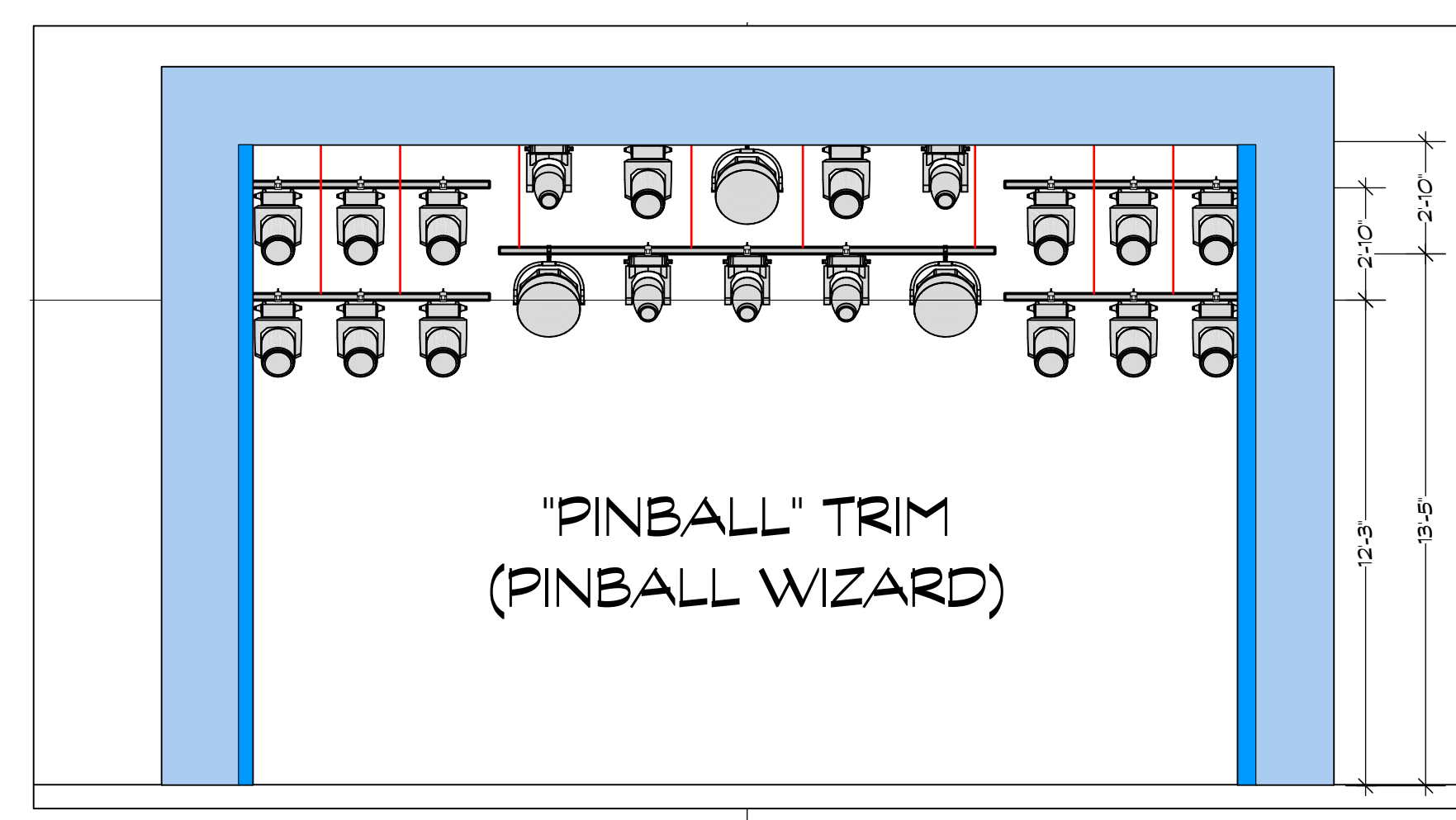
	14' ETC SOURCE 4 750w
	19' ETC SOURCE 4 750w
	26' ETC SOURCE 4 750w
	36' ETC SOURCE 4 750w
	50' ETC SOURCE 4 750w
	14' ETC S4 LUSTR 181w
	19' ETC S4 LUSTR 181w
	26' ETC S4 LUSTR 181w
	36' ETC S4 LUSTR 181w
	50' ETC S4 LUSTR 181w
	SOURCE 4 PAR VN5P 1750w
	VARI-LITE VL3600 PROFILE IP 1800w
	MARTIN MAC ULTRA PERFORMANCE 1450w
	GLP IMPRESSION X5 710w
	GLP IMPRESSION X5 COMPACT 300w
	PRG ICON EDGE 470w
	AYRTON DIABLO-S 550w
	PRG SL WASH 340w
	GLP IMPRESSION X4 BAR 20 230w
	GLP IMPRESSION FRIO BAR 800w
	TMB SOLARIS FLARE Q+ 450w
	ML PHOTON 200w



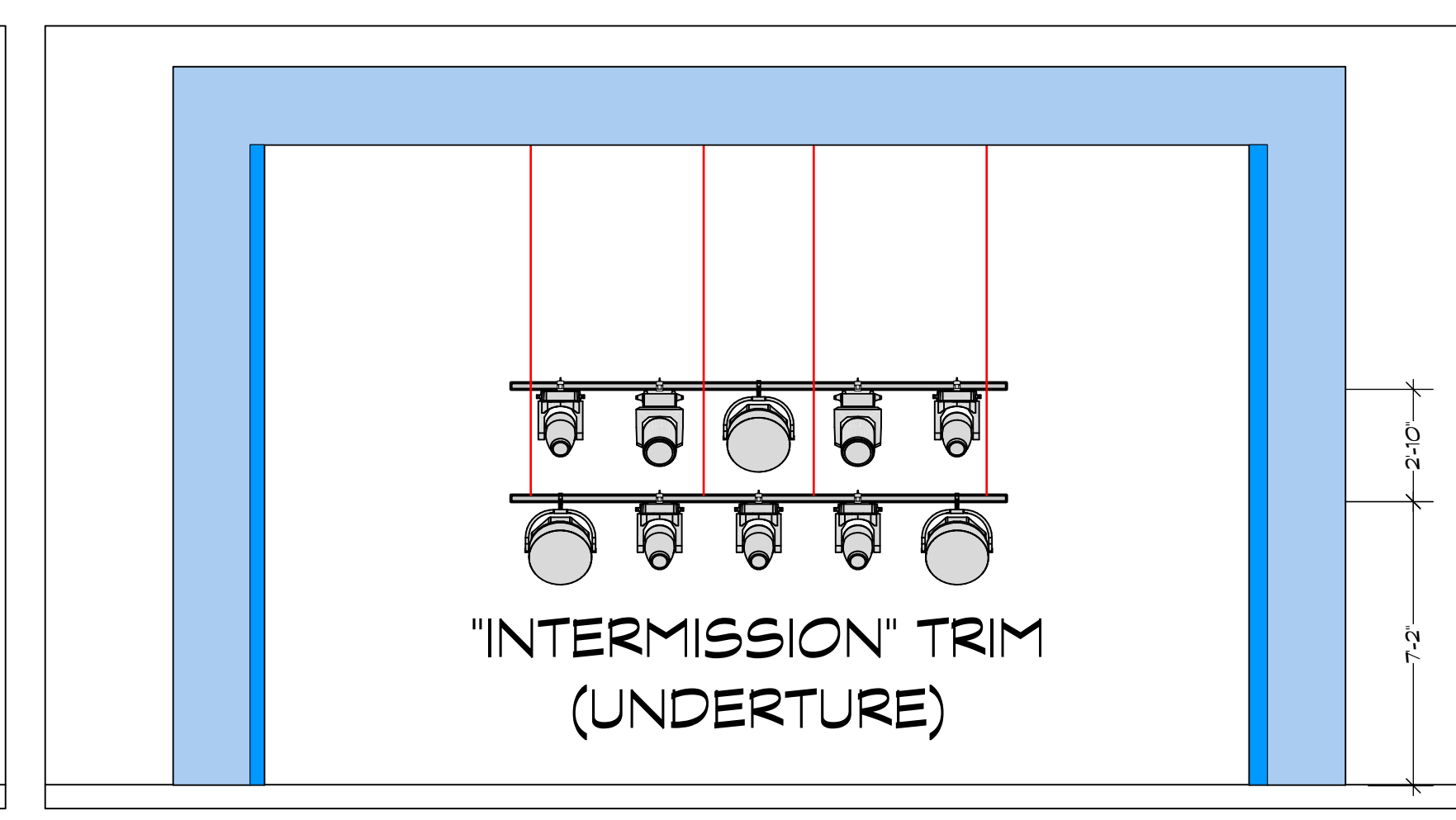
CTR SECTION AND SL/SR SECTIONS OFFSET

SL AND SR 4E WALL TO FLY TOGETHER AND SEPARATELY FROM THE CTR WALL SECTION THROUGHOUT THE SHOW

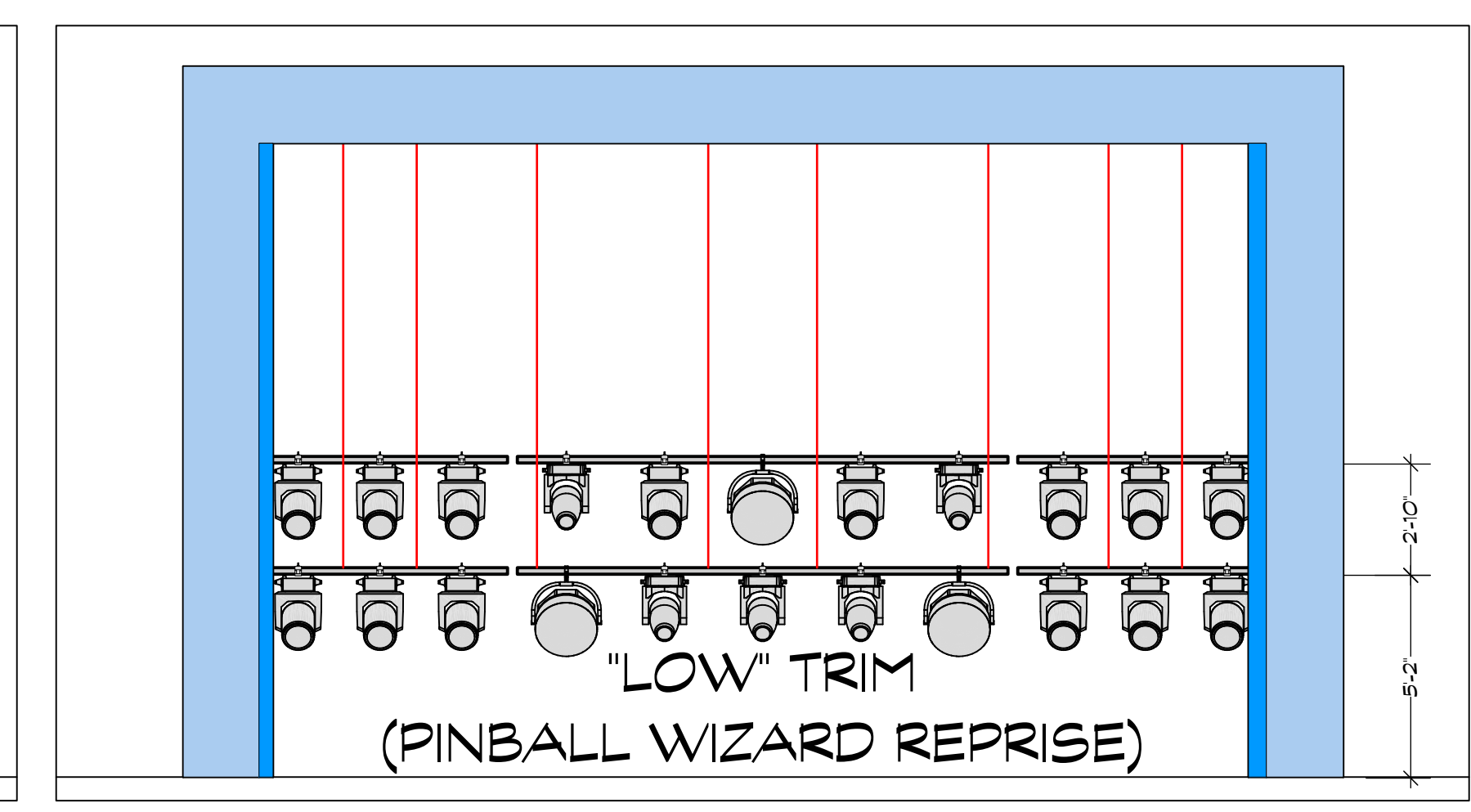
BOTTOM PIPE ON 2-10" TALDDOWN  
ALL ML TAILS UPSTAGE



"PINBALL" TRIM  
(PINBALL WIZARD)

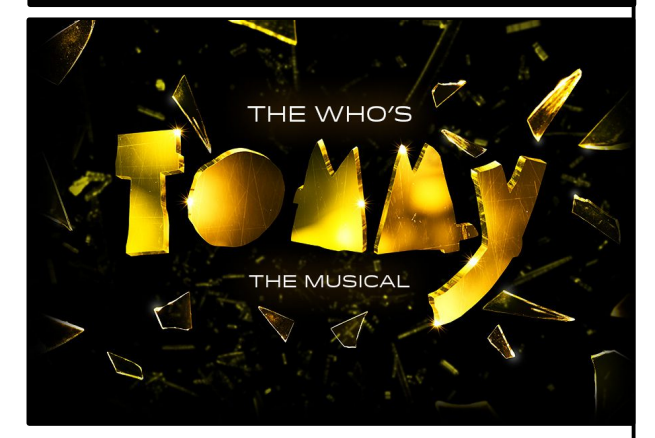


"INTERMISSION" TRIM  
(UNDERTURE)

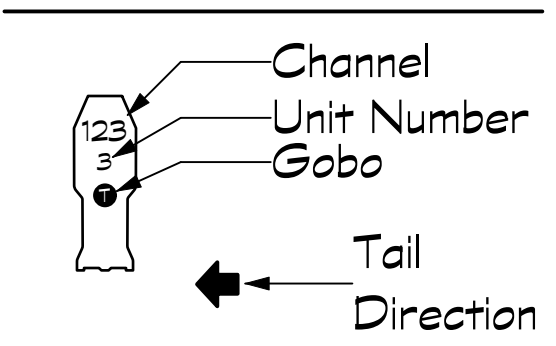


"LOW" TRIM  
(PINBALL WIZARD REPRIS)

THE WHO'S TOMMY BROADWAY  
NEDERLANDER THEATRE



**LEGEND**



DIRECTED BY  
DES MCANUFF

SCENIC DESIGNER  
DAVID KORINS

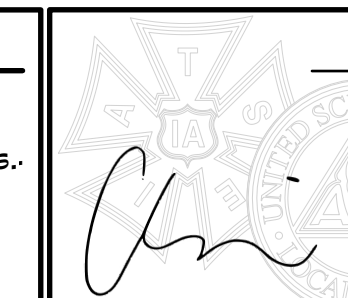
LIGHTING DESIGNER  
AMANDA ZIEVE

ASSOCIATE LIGHTING DESIGNER  
BRANDON H ROSEN

**NOTES**

- Hang all units on 18" centers unless noted.
- Please have the hazer setup for focus.
- Refer to hook up for all mode, color, template, barn door and top hat information.
- Please have all color and templates dropped prior to focus.
- No substitutions without designers approval.
- All trims are to house deck, unless otherwise specified.

This drawing represents design intent and concept.



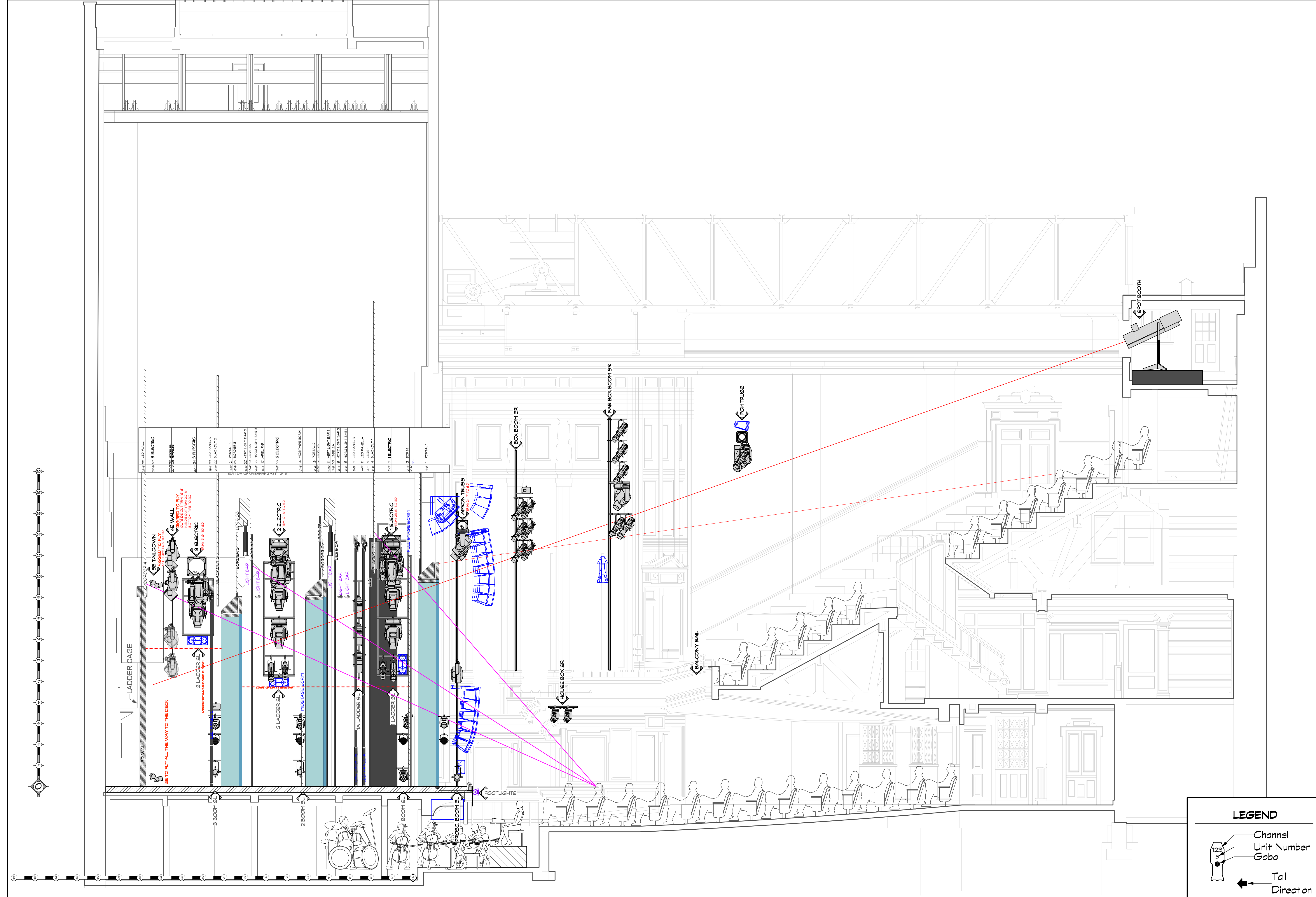
The designer and assistant designers are responsible for visual aspects of the production only, and all specifications provided relate solely to the appearance of the lighting and not to matters of electrical or structural soundness and/or safety. The implementation of this design must comply with the most stringent applicable federal and local safety and fire codes. The designer is not qualified to determine electrical or structural appropriateness of the design and will not assume responsibility for damages resulting through improper engineering and/or implementation in the handling of the elements of the lighting design. The designer agrees to make prompt correcting alterations to any specification found to be incompatible with proper safety precautions.

**ROCK WALL DETAIL**

SCALE: 3/4" = 1'-0" EXCEPT WHERE NOTED

DATE: 03/26/2024 FROZEN  
DRAWN BY: BHR

PLATE NO.  
**5**  
OF 10



**KEY TO SYMBOLS**

	14' ETC SOURCE 4 750w
	19' ETC SOURCE 4 750w
	26' ETC SOURCE 4 750w
	36' ETC SOURCE 4 750w
	50' ETC SOURCE 4 750w
	14' ETC S4 LUSTR 181w
	19' ETC S4 LUSTR 181w
	26' ETC S4 LUSTR 181w
	36' ETC S4 LUSTR 181w
	50' ETC S4 LUSTR 181w
	SOURCE 4 PAR VN5P 1750w
	VARI-LITE VL3600 1500w
	MARTIN MAC ULTRA PERFORMANCE 1450w
	GLP IMPRESSION X5 710w
	GLP IMPRESSION X5 COMPACT 300w
	PRG ICON EDGE 470w
	AYRTON DIABLOS 550w
	PRG SL WASH 340w
	GLP IMPRESSION X4 BAR 20 230w
	GLP IMPRESSION FRIO BAR 800w
	TMB SOLARIS FLARE Q 450w
	ML PHOTON 200w

THE WHO'S TOMMY BROADWAY  
NEDERLANDER THEATRE



DIRECTED BY  
DES MCANUFF  
SCENIC DESIGNER  
DAVID KORINS  
LIGHTING DESIGNER  
AMANDA ZIEVE  
ASSOCIATE LIGHTING DESIGNER  
BRANDON H ROSEN

**1/4" SECTION**

SCALE: 1/4" = 1'-0" EXCEPT WHERE NOTED  
DATE: 03/26/2024 FROZEN  
DRAWN BY: BHR  
PLATE NO. 6 OF 10

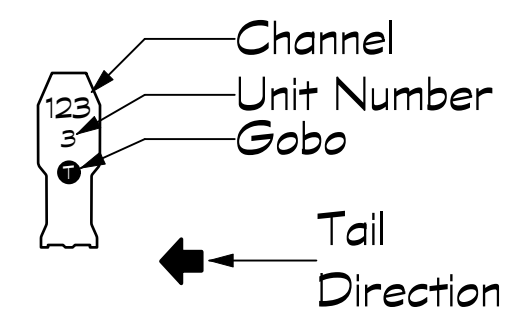
**NOTES**

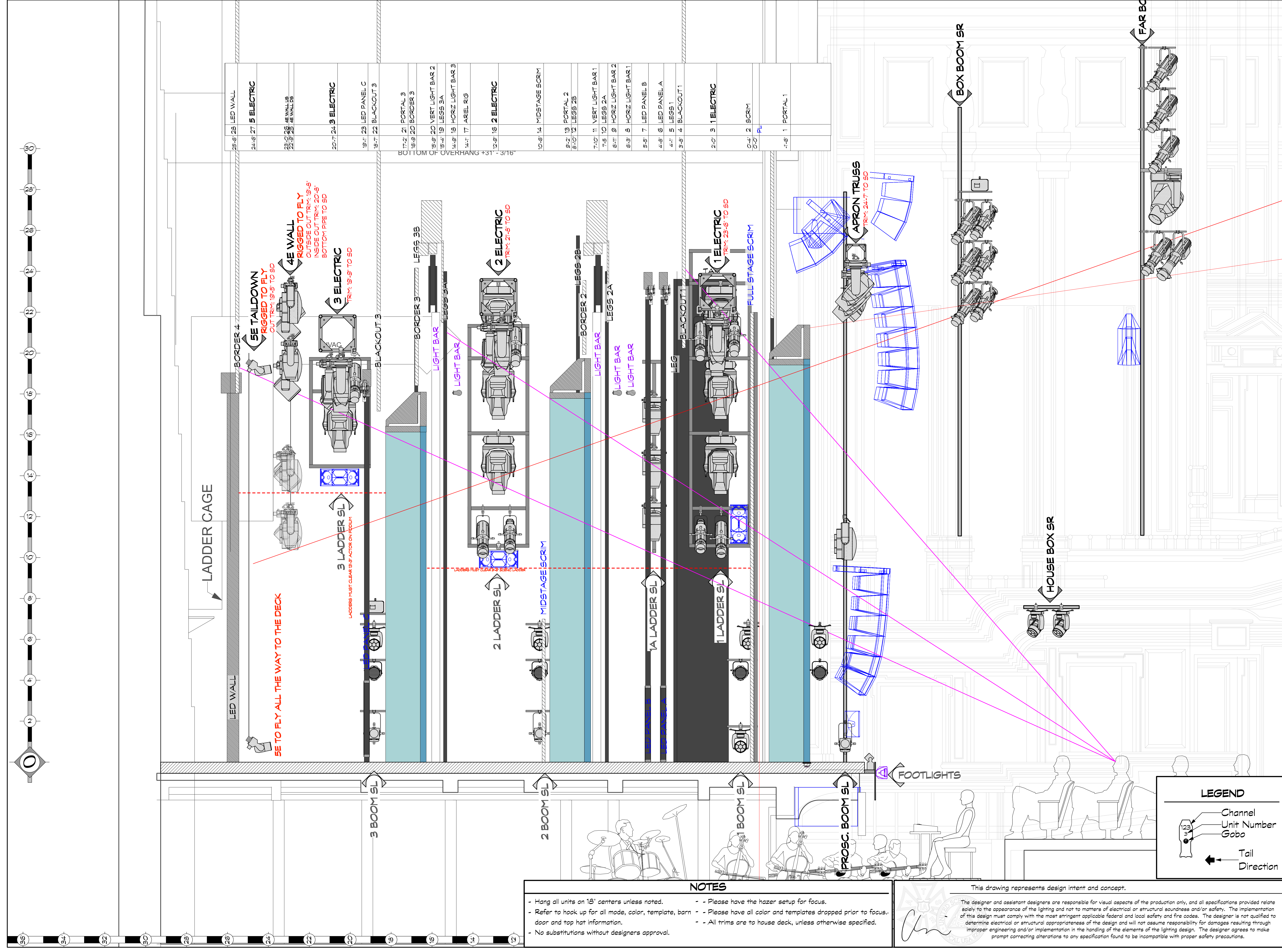
- Hang all units on 18" centers unless noted.
- Refer to hook up for all mode, color, template, barn door and top hat information.
- No substitutions without designers approval.
- Please have the hazer setup for focus.
- Please have all color and templates dropped prior to focus.
- All trims are to house deck, unless otherwise specified.

This drawing represents design intent and concept.

The designer and assistant designers are responsible for visual aspects of the production only, and all specifications provided relate solely to the appearance of the lighting and not to matters of electrical or structural soundness and/or safety. The implementation of this design must comply with the most stringent applicable federal and local safety and fire codes. The designer is not qualified to determine electrical or structural appropriateness of the design and will not assume responsibility for damages resulting through improper engineering and/or implementation in the handling of the elements of the lighting design. The designer agrees to make prompt correcting alterations to any specification found to be incompatible with proper safety precautions.

**LEGEND**





KEY TO SYMBOLS	
2	14' ETC SOURCE 4 750w
2	19' ETC SOURCE 4 750w
12	26' ETC SOURCE 4 750w
4	36' ETC SOURCE 4 750w
4	50' ETC SOURCE 4 750w
18	14' ETC S4 LUSTR 161w
6	19' ETC S4 LUSTR 161w
14	26' ETC S4 LUSTR 161w
12	36' ETC S4 LUSTR 161w
4	50' ETC S4 LUSTR 161w
12	SOURCE 4 PAR VN5P 1750w
26	VARI-LITE VL3600 1500w
12	MARTIN MAC ULTRA PERFORMANCE 1450w
22	GLP IMPRESSION X5 710w
14	GLP IMPRESSION X5 COMPACT 300w
12	PRG ICON EDGE 470w
11	AYRTON DIABLO-S 550w
14	PRG SL WASH 340w
9	GLP KABAR 20 IMPRESSION X4 BAR 20 230w
9	GLP IMPRESSION FRIO BAR 800w
9	TMB SOLARIS FLARE Q 450w
5	ML PHOTON 200w

THE WHO'S TOMMY BROADWAY  
NEDERLANDER THEATRE



DIRECTED BY  
DES MCANUFF  
SCENIC DESIGNER  
DAVID KORINS  
LIGHTING DESIGNER  
AMANDA ZIEVE  
ASSOCIATE LIGHTING DESIGNER  
BRANDON H ROSEN

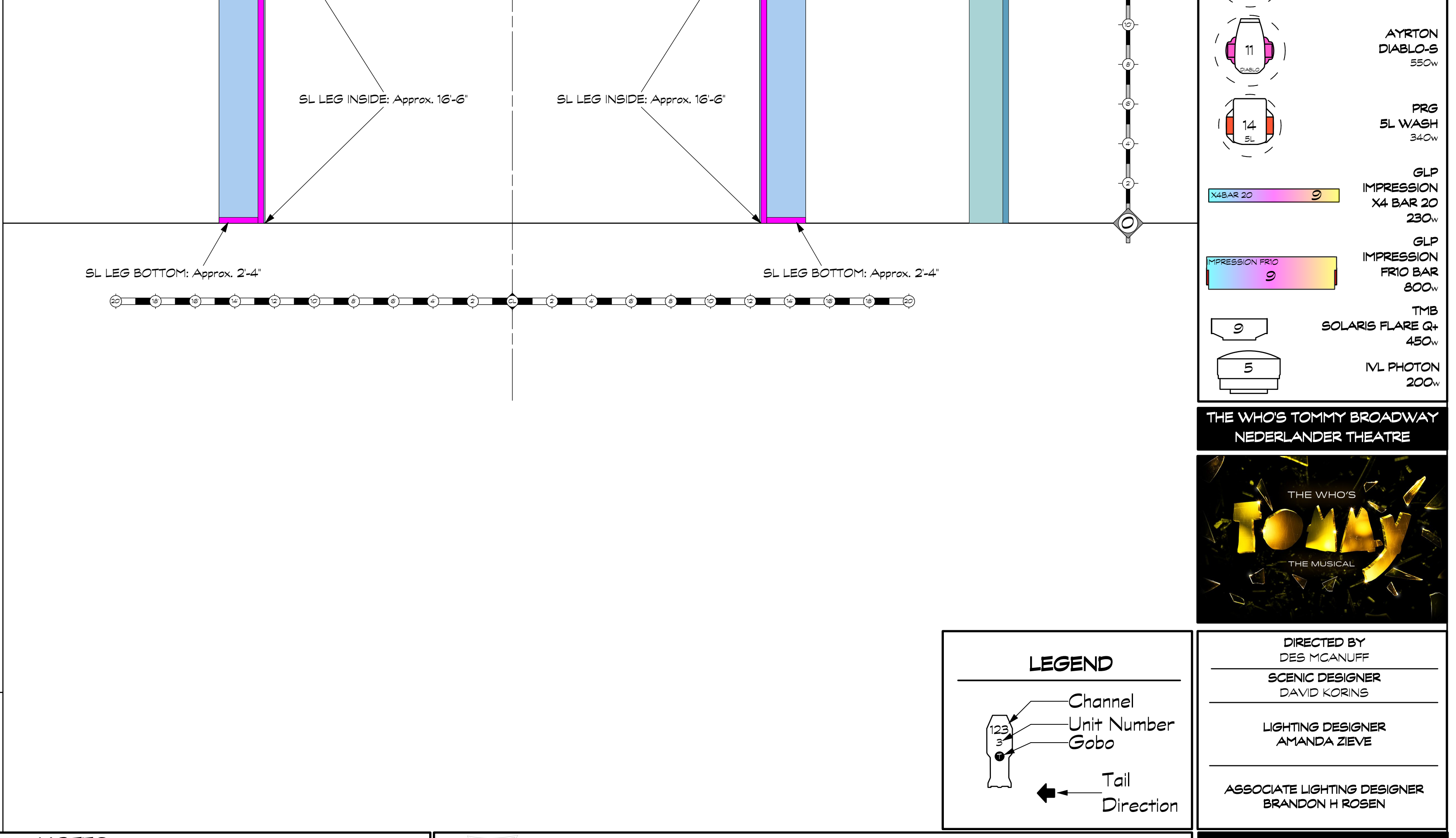
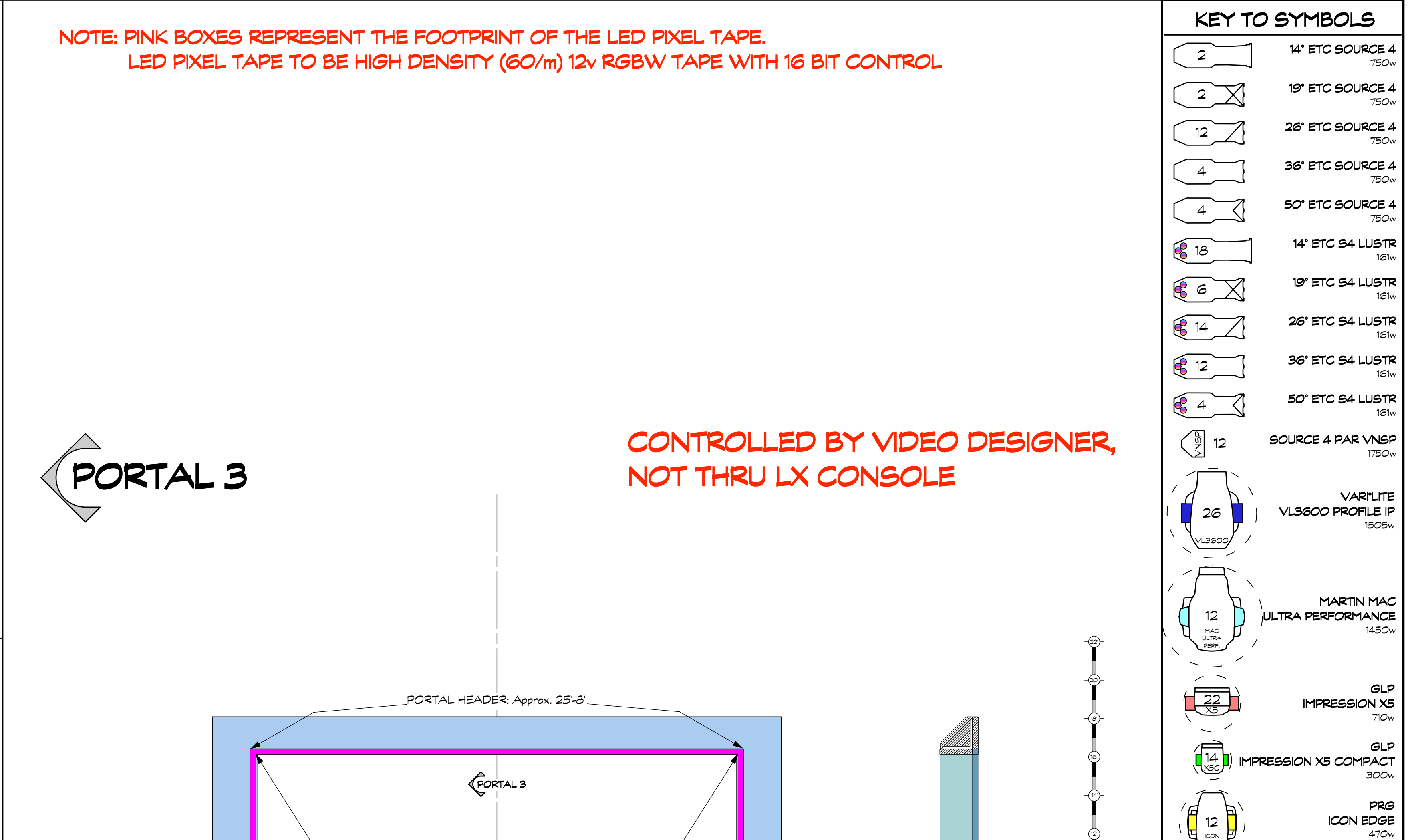
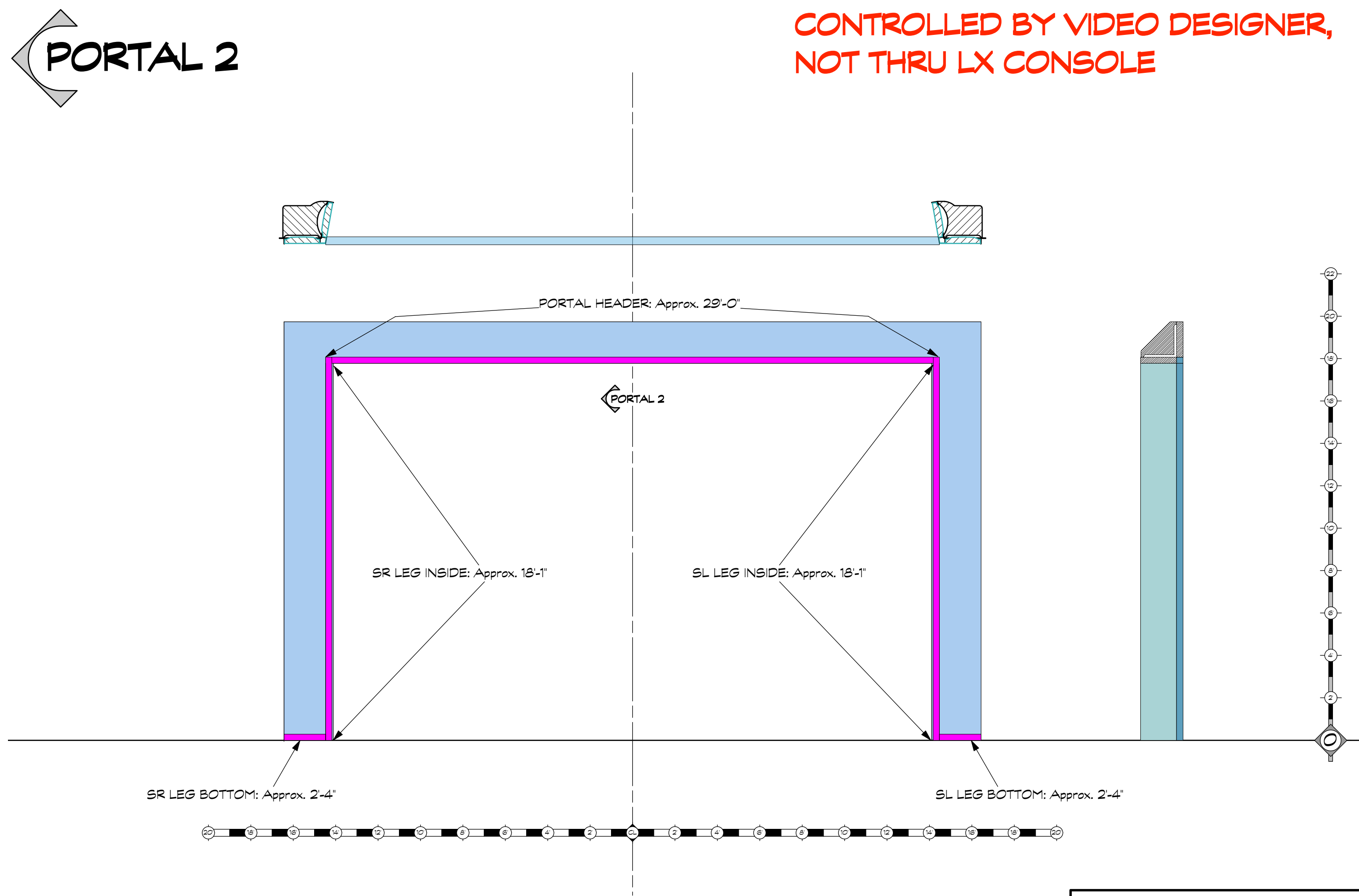
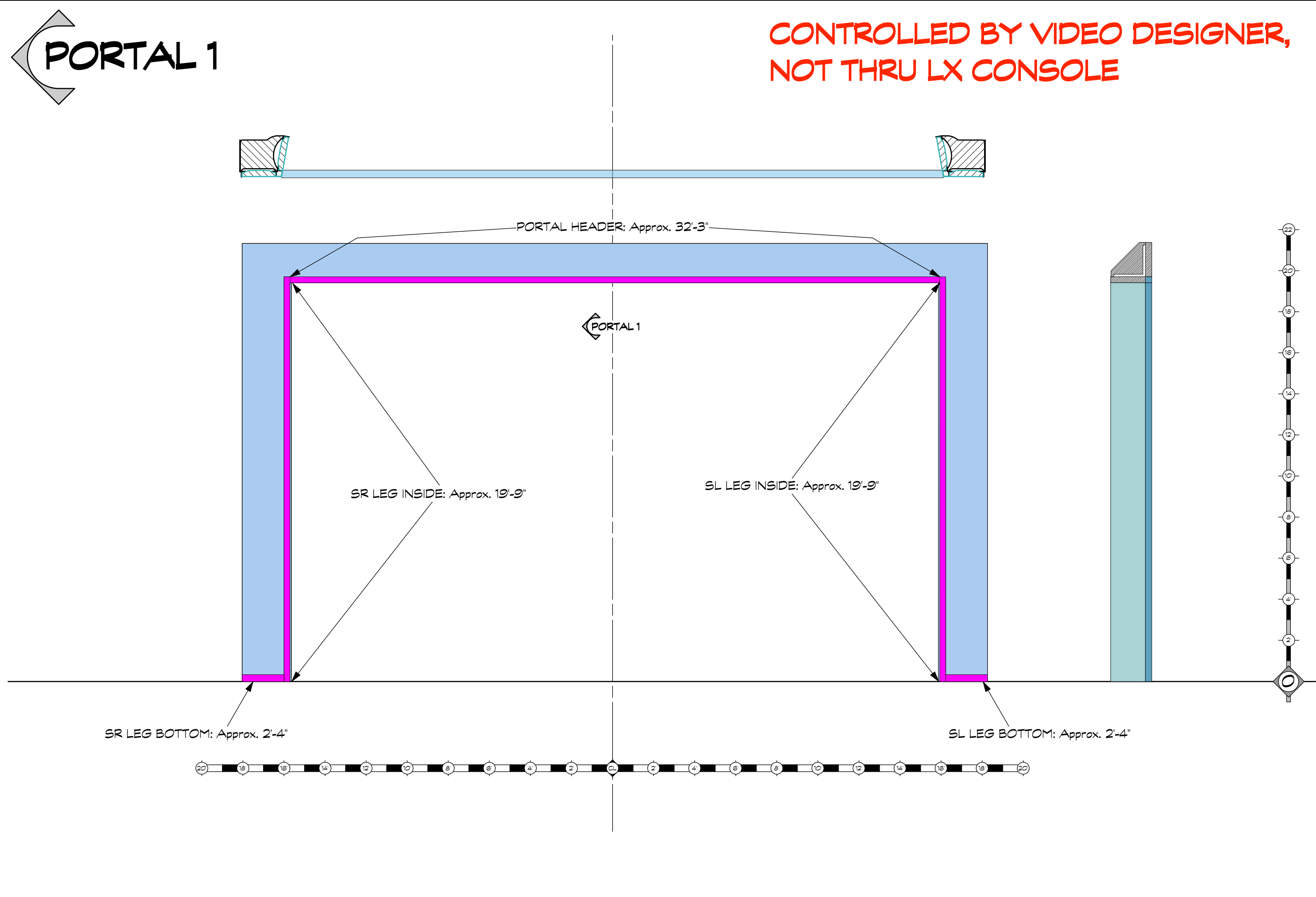
**1/2" SECTION**  
SCALE: 1/2" = 1'-0" EXCEPT WHERE NOTED  
DATE: 03/26/2024 FROZEN  
DRAWN BY: BHR  
PLATE NO. 7 OF 10

**NOTES**

- Hang all units on 18" centers unless noted.
- Please have the hazer setup for focus.
- Refer to hook up for all mode, color, template, barn door and top hat information.
- Please have all color and templates dropped prior to focus.
- All trims are to house deck, unless otherwise specified.
- No substitutions without designers approval.

This drawing represents design intent and concept.

The designer and assistant designers are responsible for visual aspects of the production only, and all specifications provided relate solely to the appearance of the lighting and not to matters of electrical or structural soundness and/or safety. The implementation of this design must comply with the most stringent applicable federal and local safety and fire codes. The designer is not qualified to determine electrical or structural appropriateness of the design and will not assume responsibility for damages resulting through improper engineering and/or implementation in the handling of the elements of the lighting design. The designer agrees to make prompt correcting alterations to any specification found to be incompatible with proper safety precautions.



#### KEY TO SYMBOLS

2	14' ETC SOURCE 4 750w
2	19' ETC SOURCE 4 750w
12	26' ETC SOURCE 4 750w
4	36' ETC SOURCE 4 750w
4	50' ETC SOURCE 4 750w
18	14' ETC S4 LUSTR 181w
6	19' ETC S4 LUSTR 181w
14	26' ETC S4 LUSTR 181w
12	36' ETC S4 LUSTR 181w
4	50' ETC S4 LUSTR 181w
12	SOURCE 4 PAR VN5P 1750w
26	VARI-LITE VL3600 PROFILE IP 1800w
12	MARTIN MAC ULTRA PERFORMANCE 1450w
22	GLP IMPRESSION X5 710w
14	GLP IMPRESSION X5 COMPACT 300w
12	PRG ICON EDGE 470w
11	AYRTON DIABLO-S 550w
14	PRG SL WASH 340w
9	GLP IMPRESSION X4 BAR 20 230w
9	GLP IMPRESSION FRO BAR 800w
9	TMB SOLARIS FLARE Q 450w
5	ML PHOTON 200w

- #### NOTES
- Hang all units on 18" centers unless noted.
  - Refer to hook up for all mode, color, template, barn door and top hat information.
  - No substitutions without designers approval.
  - Please have the hazer setup for focus.
  - Please have all color and templates dropped prior to focus.
  - All trims are to house deck, unless otherwise specified.

This drawing represents design intent and concept.

The designer and assistant designers are responsible for visual aspects of the production only, and all specifications provided relate solely to the appearance of the lighting and not to matters of electrical or structural soundness and/or safety. The implementation of this design must comply with the most stringent applicable federal and local safety and fire codes. The designer is not qualified to determine electrical or structural appropriateness of the design and will not assume responsibility for damages resulting through improper engineering and/or implementation in the handling of the elements of the lighting design. The designer agrees to make prompt correcting alterations to any specification found to be incompatible with proper safety precautions.

**THE WHO'S TOMMY BROADWAY**  
NEDERLANDER THEATRE

DIRECTED BY  
DES MCANUFF

SCENIC DESIGNER  
DAVID KORINS

LIGHTING DESIGNER  
AMANDA ZIEVE

ASSOCIATE LIGHTING DESIGNER  
BRANDON H ROSEN

#### PORTAL DETAIL

SCALE: 1/4" = 1'-0" EXCEPT WHERE NOTED

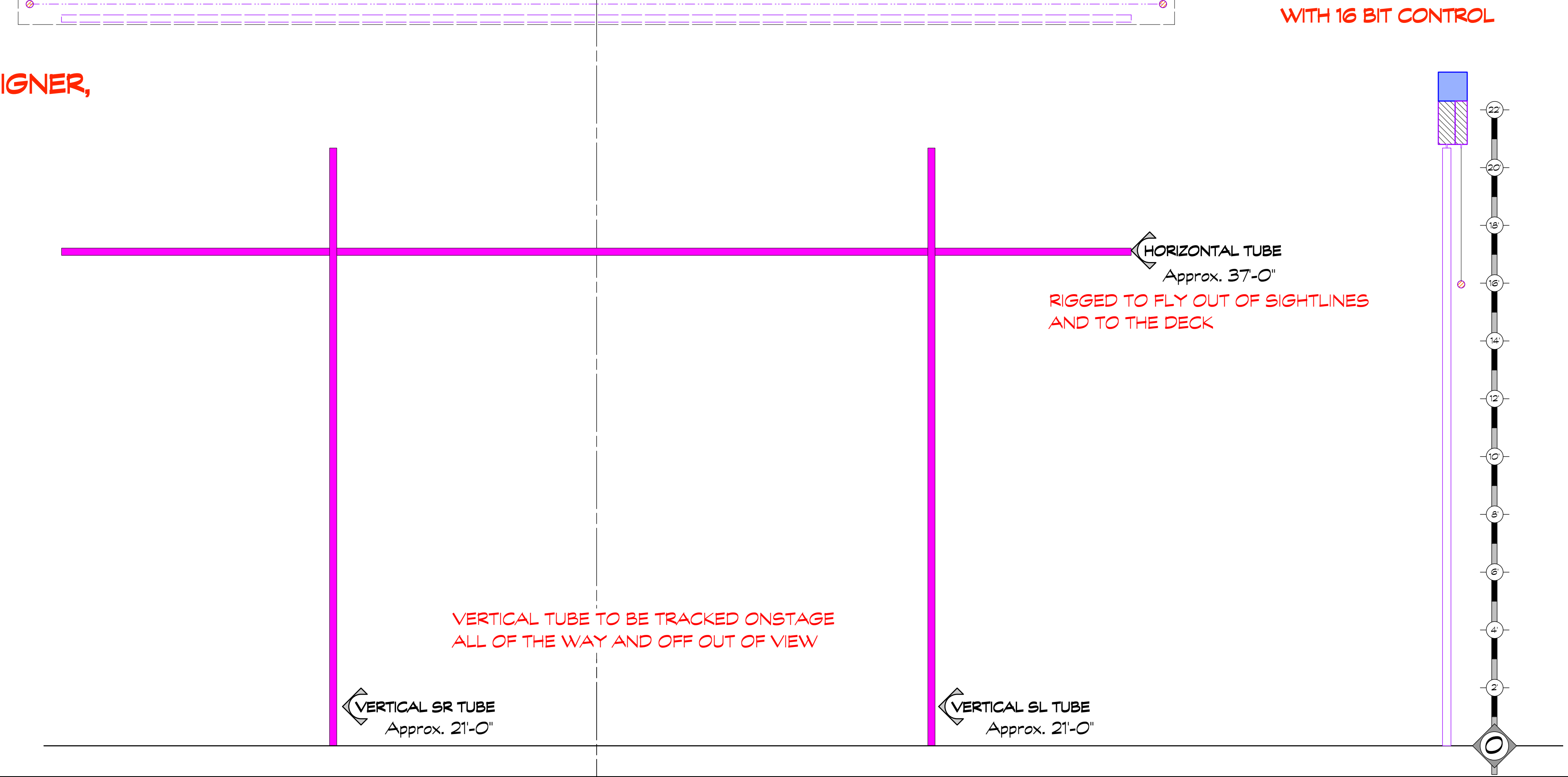
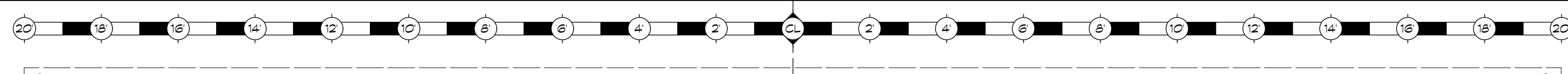
DATE: 03/26/2024 FROZEN

DRAWN BY: BHR

PLATE NO.  
8  
OF 10

# UPSTAGE TUBES

CONTROLLED BY VIDEO DESIGNER,  
NOT THRU LX CONSOLE



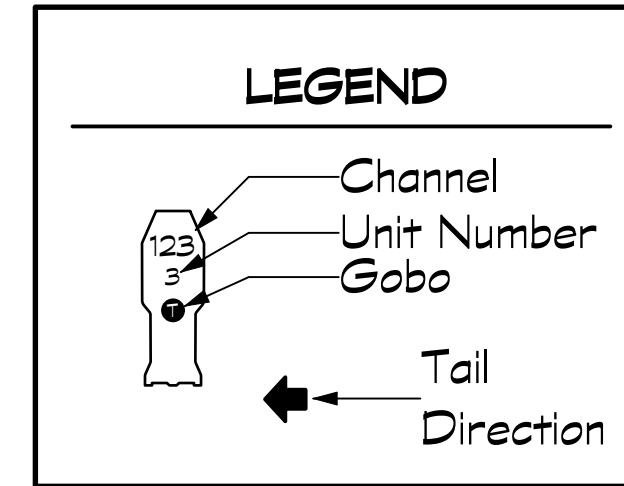
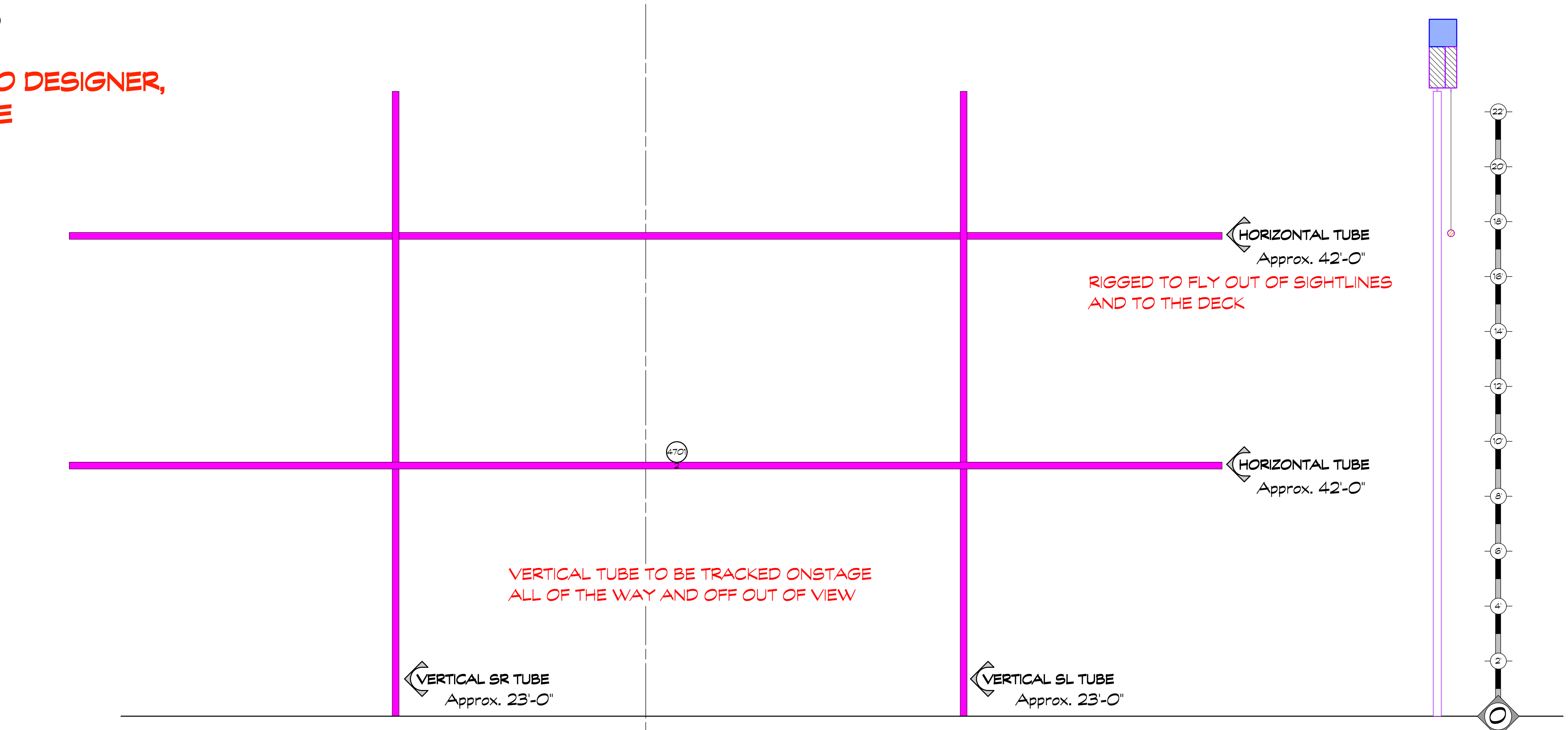
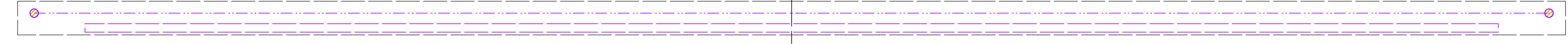
NOTE: PINK BOXES REPRESENT THE FOOTPRINT OF THE LED PIXEL TAPE.  
LED PIXEL TAPE TO BE HIGH DENSITY (60/m) 12v RGBW TAPE  
WITH 16 BIT CONTROL

## KEY TO SYMBOLS

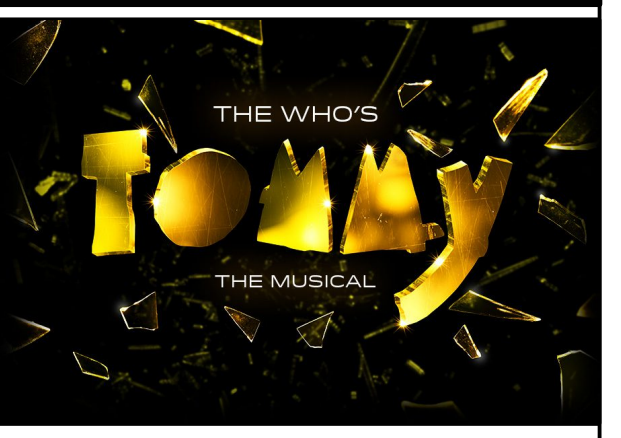
2	14' ETC SOURCE 4 750w
2	19' ETC SOURCE 4 750w
12	26' ETC SOURCE 4 750w
4	36' ETC SOURCE 4 750w
4	50' ETC SOURCE 4 750w
18	14' ETC S4 LUSTR 181w
6	19' ETC S4 LUSTR 181w
14	26' ETC S4 LUSTR 181w
12	36' ETC S4 LUSTR 181w
4	50' ETC S4 LUSTR 181w
12	SOURCE 4 PAR VN5P 1750w
26	VARI-LITE VL3600 PROFILE IP 1800w
12	MARTIN MAC ULTRA PERFORMANCE 1450w
22	GLP IMPRESSION X5 710w
14	GLP IMPRESSION X5 COMPACT 300w
12	PRG ICON EDGE 470w
11	AYRTON DIABLO-S 550w
14	PRG SL WASH 340w
9	GLP X4 BAR 20 230w
9	GLP IMPRESSION FRIO BAR 800w
9	TMB SOLARIS FLARE Q 450w
5	ML PHOTON 200w

# DOWNSTAGE TUBES

CONTROLLED BY VIDEO DESIGNER,  
NOT THRU LX CONSOLE



THE WHO'S TOMMY BROADWAY  
NEDERLANDER THEATRE



DIRECTED BY  
DES MCANUFF  
SCENIC DESIGNER  
DAVID KORINS  
LIGHTING DESIGNER  
AMANDA ZIEVE  
ASSOCIATE LIGHTING DESIGNER  
BRANDON H ROSEN

- ### NOTES
- Hang all units on 18" centers unless noted.
  - Please have the hazer setup for focus.
  - Refer to hook up for all mode, color, template, barn door and top hat information.
  - Please have all color and templates dropped prior to focus.
  - No substitutions without designers approval.
  - All trims are to house deck, unless otherwise specified.

This drawing represents design intent and concept.  
The designer and assistant designers are responsible for visual aspects of the production only, and all specifications provided relate solely to the appearance of the lighting and not to matters of electrical or structural soundness and/or safety. The implementation of this design must comply with the most stringent applicable federal and local safety and fire codes. The designer is not qualified to determine electrical or structural appropriateness of the design and will not assume responsibility for damages resulting through improper engineering and/or implementation in the handling of the elements of the lighting design. The designer agrees to make prompt correcting alterations to any specification found to be incompatible with proper safety precautions.

### PIXEL TUBES

SCALE: 1/4" = 1'-0" EXCEPT WHERE NOTED  
DATE: 03/26/2024 FROZEN  
DRAWN BY: BHR  
PLATE NO. 9 OF 10

### DOORFRAMES

WIRELESS CONTROL

EACH INTERIOR DOORFRAME LINED WITH RGBWW LED TAPE TO CREATE LIGHT BOX VISIBLE ON THE FRONT, BACK, AND INTERIOR.

LED TAPE MOUNTING DETAIL SCALE: 2" = 1'-0"

DS DOOR MS DOOR US DOOR

### ARMOIRE

WIRELESS CONTROL

GANTOM FIXTURES TO BE CONTAINED OUT OF VIEW AS MUCH AS POSSIBLE. LEAVE ROOM TO FOCUS AND MAINTENANCE

GANTOM MOUNTING DETAIL SCALE: 3" = 1'-0"

6'-5" 4'-0" 632 633 634 631

5'-1/2" 641 642 643 644

ARMOIRE CRACK (OUTSIDE)  
Continuous Source Cool White LED Tape Mounted behind outcut cracks

ARMOIRE CRACK (INSIDE)  
Cool White LED Panel Mounted behind outcut cracks where LED tape cannot fit

Actor's Toe 5.5" from glass.  
2" Tail Block DS edge is 5.5" from glass for Tommy 4 and final Tommy 10 Scene

CHANNELS 641 THRU 646 TO BE MOUNTED HI POINTING DOWN AND CHANNELS 647 & 648 TO BE MOUNTED LOW AS UPLIGHT

TYPICAL LED TAPE MOUNTING DETAIL SCALE: 3" = 1'-0"

### TABLE LAMP

WIRELESS CONTROL

DISCUSS LIGHT SOURCE WITH LD

(1) TABLE LAMP WITH LOW VOLTAGE DIMMABLE LED LIGHT BULB (100W EQUIVALENT) TO BE SWAPPED MID SHOW WITH:  
(1) 'FUTURISTIC' RGBWW LED CONTROLLED TABLE LAMP

### VANITY MIRROR

WIRELESS CONTROL

INTERIOR OF MIRROR TO BE LINED WITH RGBWW LED TAPE. SEE MOUNTING DETAIL OF DOORFRAMES FOR REFERENCE

621

### KEY TO SYMBOLS

2	14' ETC SOURCE 4 750w
2	19' ETC SOURCE 4 750w
12	26' ETC SOURCE 4 750w
4	36' ETC SOURCE 4 750w
4	50' ETC SOURCE 4 750w
18	14' ETC S4 LUSTR 181w
6	19' ETC S4 LUSTR 181w
14	26' ETC S4 LUSTR 181w
12	36' ETC S4 LUSTR 181w
4	50' ETC S4 LUSTR 181w
12	SOURCE 4 PAR VN5P 1750w
26	VARI-LITE VL3600 1500w
12	MARTIN MAC ULTRA PERFORMANCE 1450w
22	GLP IMPRESSION X5 710w
14	GLP IMPRESSION X5 COMPACT 300w
12	PRG ICON EDGE 470w
11	AYRTON DIABLO-S 550w
14	PRG SL WASH 340w
9	GLP XBAR 20 IMPRESSION X4 BAR 20 230w
9	GLP IMPRESSION FRIO BAR 800w
9	TMB SOLARIS FLARE Q- 450w
5	ML PHOTON 200w

### FULL LENGTH MIRRORS

WIRELESS CONTROL

CONTROLLED BY VIDEO DESIGNER, NOT THRU LX CONSOLE

6'-6 1/2" 3'-0" 2'-6" 3'-6 1/2" 3'-0" 2'-6"

SMALL TABLE TO JOIN WITH MIRROR 3'-0" FROM SHOW DECK TO CREATE 'PINBALL MACHINE'

PIXEL TAPE MOUNTING DETAIL SCALE: 3" = 1'-0"

EACH INTERIOR MIRROR LINED WITH RGBW PIXEL TAPE TO CREATE LIGHT BOX VISIBLE ON THE FRONT, BACK, AND INTERIOR.

### VESPA

WIRELESS CONTROL

VESPA TO BE LINED WITH RGB FLEX NEON AS PER SCENIC DESIGNER. SEE CYAN IN DETAIL BELOW FOR APPROX. LENGTH. ONLY NEEDED ON STAGE RIGHT SIDE OF VESPA HEADLIGHT CONTROL THRU SCOOTER BATTERY. NO CONSOLE CONTROL NEEDED FOR HEADLIGHT

633

### FIRE BOXES

WIRELESS CONTROL

661	662	BOX 1	RED LED TAPE
663	664	GREEN LED TAPE	TINYFOGGER FX
665		DMX FAN	

671	672	BOX 2	RED LED TAPE
673	674	GREEN LED TAPE	TINYFOGGER FX
675		DMX FAN	

### HERO PINBALL MACHINE

WIRELESS CONTROL

CONTROLLED BY VIDEO DESIGNER, NOT THRU LX CONSOLE

620

RGBW PIXEL TAPE LINES FRAME (SEE MIRROR DETAIL AS REFERENCE)

RGBW PIXEL TAPE INSIDE TABLE TOP TO CREATE PIXEL LIGHT BOX (11 ROWS)

RGBW PIXEL TAPE UPLIGHT ON EDGE OF TABLE POINTING STRAIGHT UP.

### LONG TABLE

WIRELESS CONTROL

8 ROWS OF RGBW LED TAPE INSIDE MILK PLEXI LIGHT BOX

620

### WASHING MACHINE

WIRELESS CONTROL

622

### CAMERA

WIRELESS CONTROL

CAMERA FLASH STROBE

622

### NOTES

- Hang all units on 18" centers unless noted.
- Please have the hazer setup for focus.
- Refer to hook up for all mode, color, template, barn door and top hat information.
- Please have all color and templates dropped prior to focus.
- No substitutions without designers approval.
- All trims are to house deck, unless otherwise specified.

### LEGEND

Channel  
Unit Number  
Gobo  
Tail Direction

This drawing represents design intent and concept.

The designer and assistant designers are responsible for visual aspects of the production only, and all specifications provided relate solely to the appearance of the lighting and not to matters of electrical or structural soundness and/or safety. The implementation of this design must comply with the most stringent applicable federal and local safety and fire codes. The designer is not qualified to determine electrical or structural appropriateness of the design and will not assume responsibility for damages resulting through improper engineering and/or implementation in the handling of the elements of the lighting design. The designer agrees to make prompt correcting alterations to any specification found to be incompatible with proper safety precautions.

DIRECTED BY  
DES MCANUFF

SCENIC DESIGNER  
DAVID KORINS

LIGHTING DESIGNER  
AMANDA ZIEVE

ASSOCIATE LIGHTING DESIGNER  
BRANDON H ROSEN

### SET LX

SCALE: 1/2" = 1'-0" EXCEPT WHERE NOTED

DATE: 03/26/2024 FROZEN

DRAWN BY: BHR

PLATE NO. 10 OF 10