

NOTES:

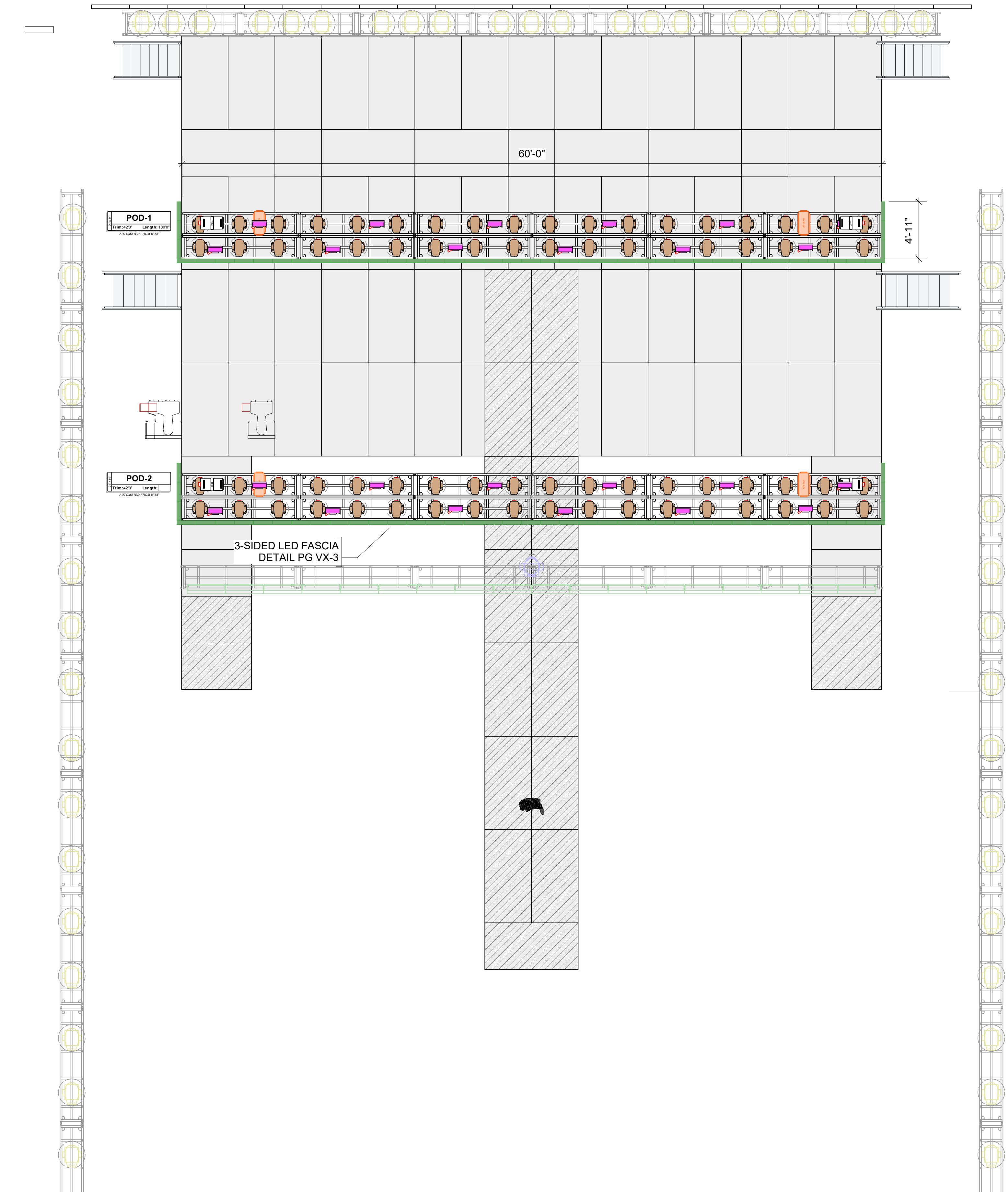
This document and the ideas and design incorporated herein, as an instrument of professional service, is the property of ChaseLights Studios ("CLS") and is not to be used, in whole or part, for any other project without the written authorization of CLS. This document is not to be reproduced or modified in any way without prior written consent of CLS.

This design or drawing represents visual concepts only. CLS or the draftsperson is not a licensed engineer and is not qualified to determine whether the designs and/or drawings meet structural, safety and/or building code requirements. All weight calculations are estimated, for accurate weights a dynamometer must be used. CLS does not assume responsibility for the structural integrity of the designs or for elements and equipment required in connection with the designs.

CHASE LIGHTS
STUDIOS
FOR COUR, NASHVILLE, TN





PRODUCTION DESIGN
LOS ANGELES, CA
hello@chase-hall.com

PROJECT: KANE BROWN 2024 TOURING SL ISO		PRODUCTION MANAGER: IAN KINNERLEY	SHOW DATE:
VENUE: ARENA TOURING		DRAWN BY: CLS, STEVEN MORGAN	DRAW DATE: 9/20/2024
DIRECTOR: ALEX ALVGA		PROJECT NO.:	SHEET:
REVISION: V2B		SCALE: 1:1	VP-3 OF 6
		FILE NAME: KANE_PRODDSIGN_V6_ARENA_CH.vwx	

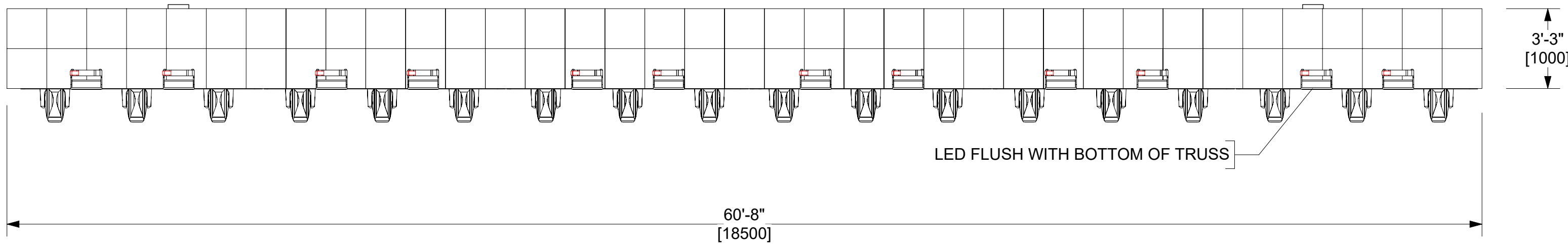


NOTES:

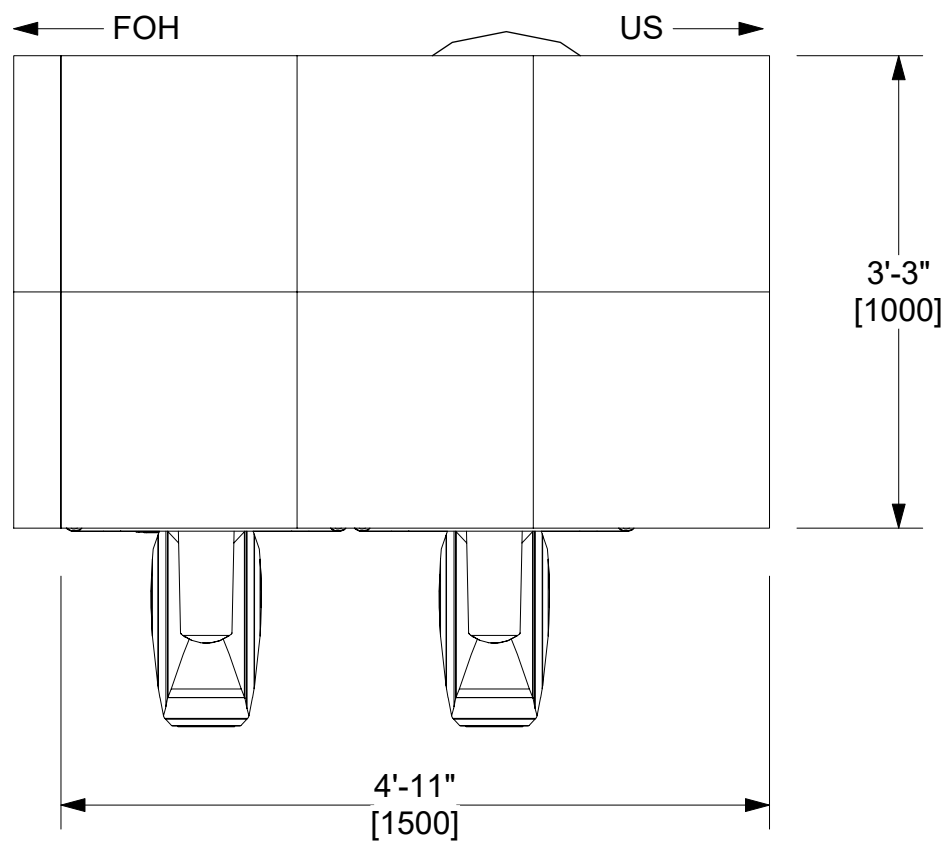
AUTOMATION MOTHERGRID TO BE DISCUSSED WITH DESIGNER

LIGHTING-PODS			
 GLP JDC1 Strobe QTY: 24	 Martin AF 2 Fan Hung QTY: 4	 Martin JEM 2845 QTY: 4	 PRG Icon Edge QTY: 20

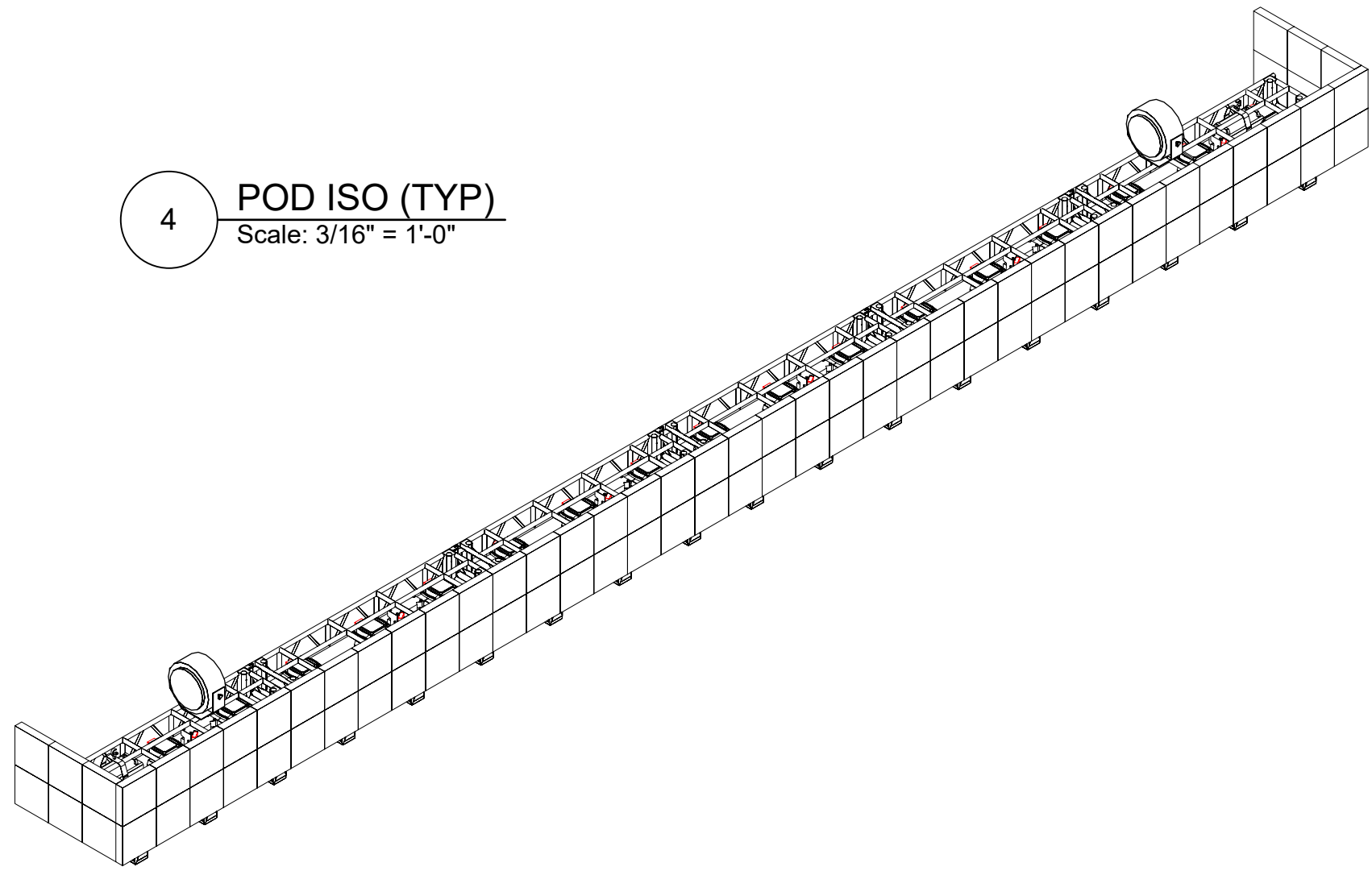
1 **POD FRONT (TYP)**
Scale: 1/4" = 1'-0"



3 **POD SIDE (TYP)**
Scale: 3/4" = 1'-0"

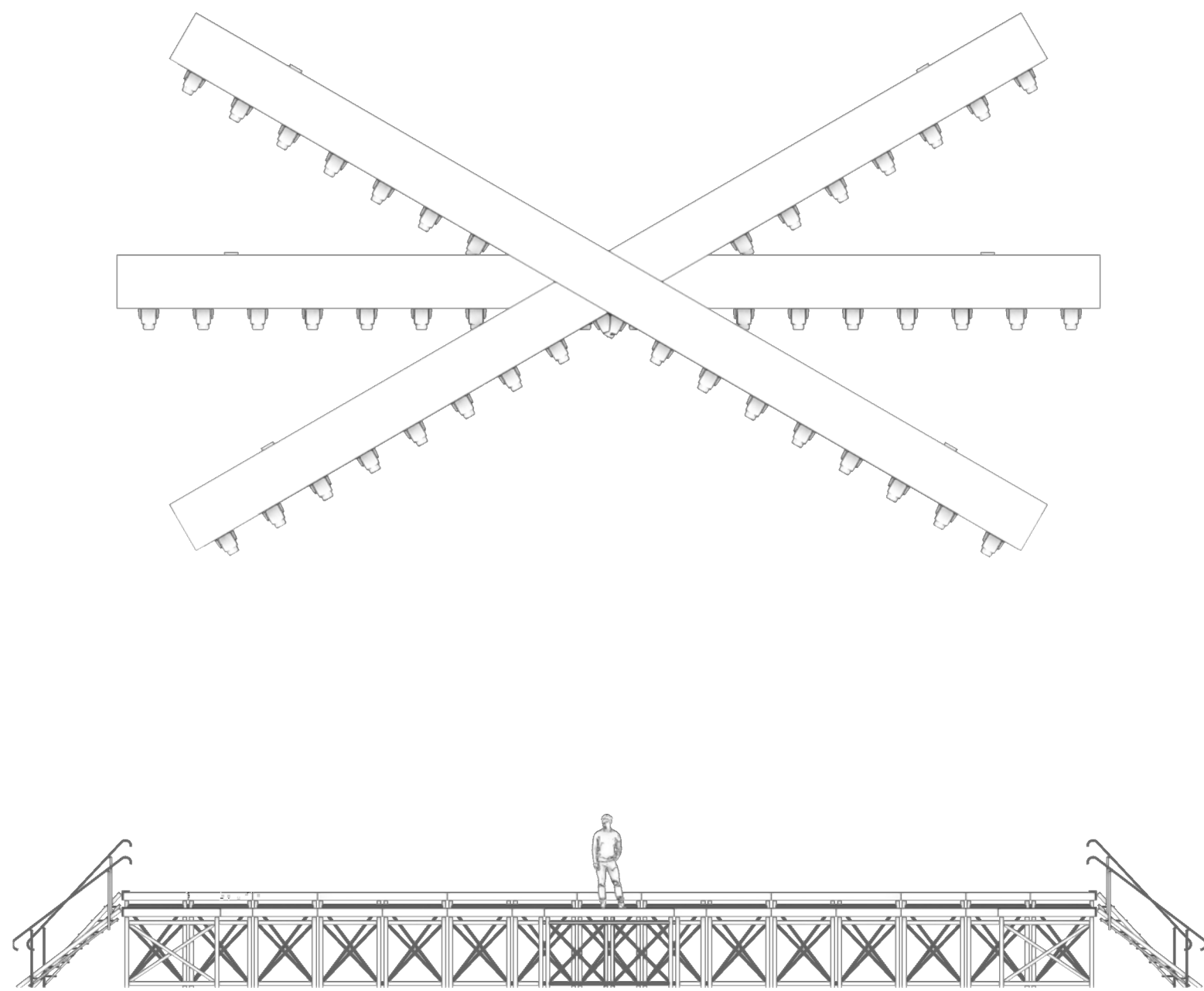


4 **POD ISO (TYP)**
Scale: 3/16" = 1'-0"



5 **AUTOMATED PODS**

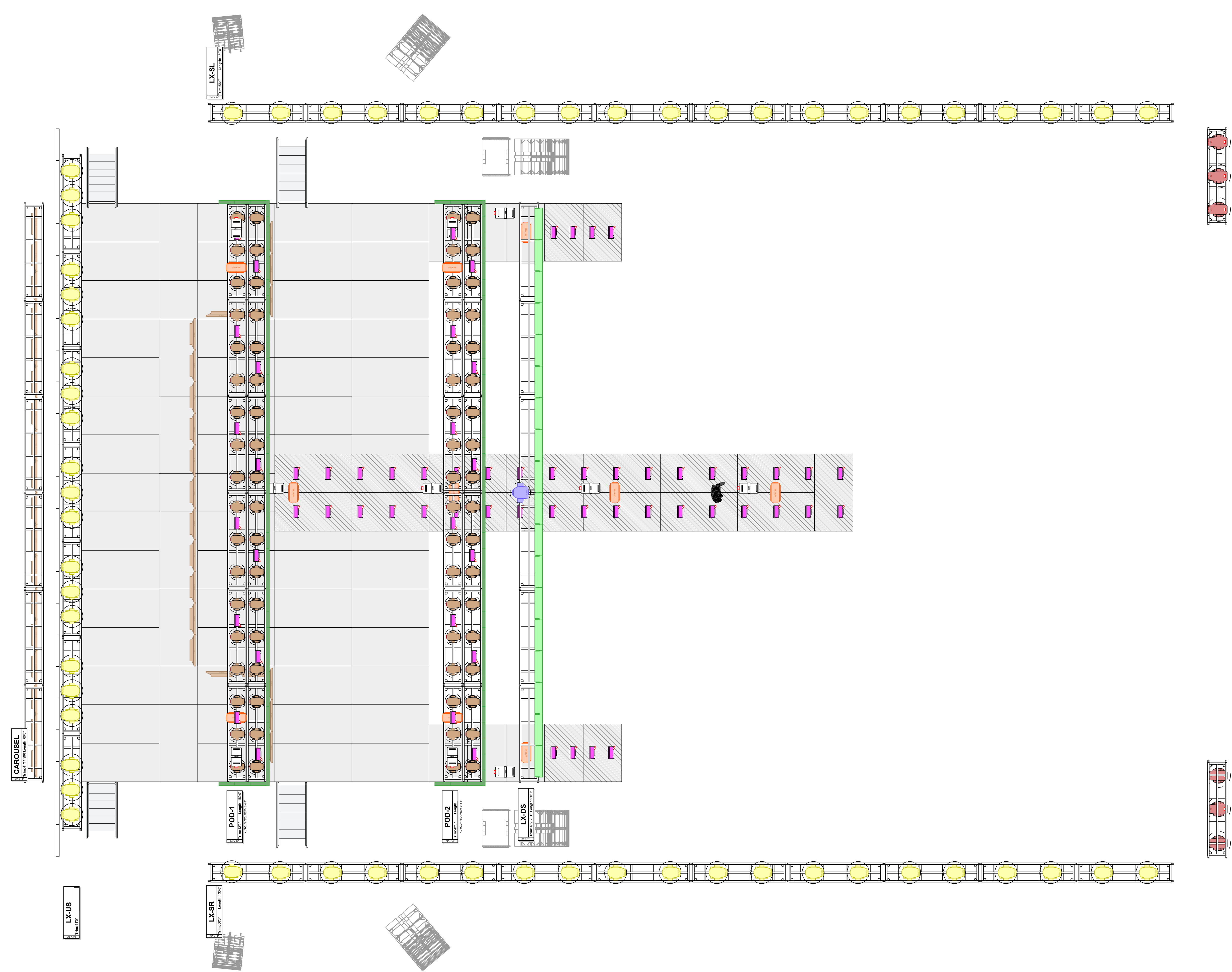
Scale: NTS
MAX RAKE: ~30° - SINGLE AXIS (Y) ROTATION
MAXIMUM RAKE ANGLE SUBJECT TO CHANGE AFTER ENGINEERING



CHASE LIGHTS
STUDIOS
FOR COURT, NASHVILLE, TN

PRODUCTION DESIGN
LOS ANGELES, CA
hello@chase-hall.com

PROJECT: KANE BROWN 2024 TOURING PODS		PRODUCTION MANAGER: IAN KINNERSLEY	SHOW DATE:
VENUE: ARENA TOURING	LOCATION: USA TOURING	DRAWN BY: CLS, STEVEN MORGAN	DRAW DATE: 9/20/2024
DIRECTOR: ALEX ALVGA	SCALE: 1:1	PROJECT NO.:	SHEET: LX-4 OF 6
REVISION: V2B	FILE NAME: KANE_PRODDSIGN_V6_ARENA_CH.vwx		



LIGHTING SCHEDULE			
BY LOCATION			
QTY		TYPE	POSITION
14		Clay Paky Scenius Unico	DECK-US
20		Clay Paky Scenius Unico	LX-SL
20		Clay Paky Scenius Unico	LX-SR
21		Clay Paky Scenius Unico	LX-US
18		GLP Impression FR10 Bar	LX-DS
44		GLP JDC1 Strobe	FLR
12		GLP JDC1 Strobe	POD-1
12		GLP JDC1 Strobe	POD-2
36		PRG Icon Edge	POD-1
36		PRG Icon Edge	POD-2
6		Robe Robin Forte FS	FOH
54		Solaris Flare LR Qplus	FLARE ROW LX
21		Solaris Flare LR Qplus	PIXEL LINE FLOOR
1		VL6000 Beam	LX-DS

NOTES: LIGHTING-FLOWN						
QTY: 14	QTY: 18	QTY: 44	QTY: 72	QTY: 6	QTY: 75	QTY: 1

LIGHTING-FLOOR				
QTY: 14	QTY: 44	QTY: 6	QTY: 6	QTY: 21

This document and the ideas and design incorporated herein, as an instrument of professional service, is the property of ChaseLights Studios ("CLS") and is not to be used, in whole or part, for any other project without the written authorization of CLS. This document is not to be reproduced or modified in any way without prior written consent of CLS.

This design or drawing represents visual concepts only. CLS or the draftsman is not a licensed engineer and is not qualified to determine whether the designs and/or drawings meet structural, safety and/or building code requirements. All weight calculations are estimated, for accurate weights a dynamometer must be used. CLS does not assume responsibility for the structural integrity of the designs or for elements and equipment required in connection with the designs.

CHASE LIGHTS
STUDIOS
FOR COUR, NASHVILLE, TN

PRODUCTION DESIGN
LOS ANGELES, CA
hello@chase-hall.com

PROJECT: KANE BROWN 2024 TOURING LX OVERVIEW		PRODUCTION MANAGER: IAN KINNERSLEY	SHOW DATE:
VENUE: ARENA TOURING		DRAWN BY: CLS, STEVEN MORGAN	DRAW DATE: 9/20/2024
DIRECTOR: ALEX ALVGA		PROJECT NO.:	SHEET: LX-2 OF 6
REVISION: V2B		SCALE: 1:1	FILE NAME: KANE_PRODDSIGN_V6_ARENA_CH.vwx