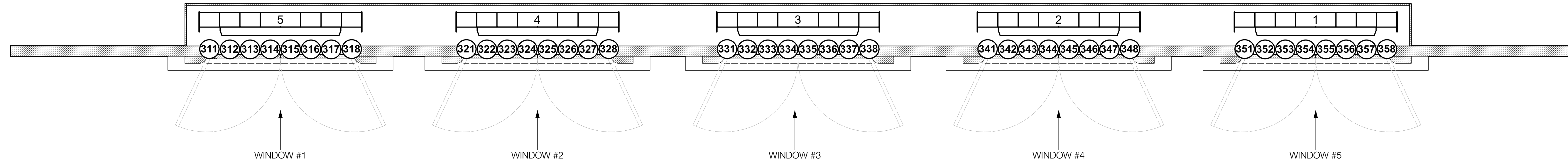
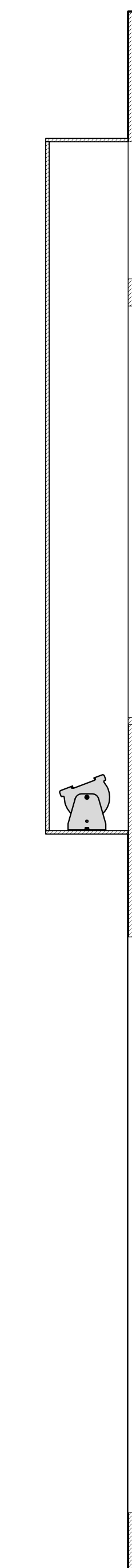


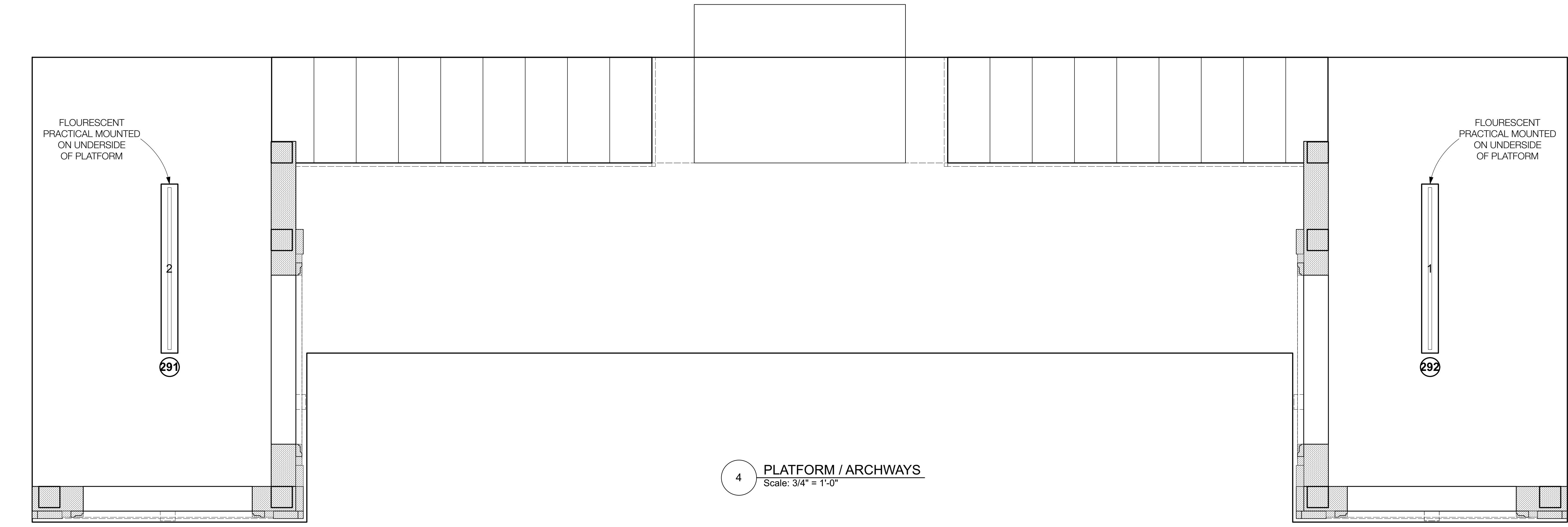


1 Windows Front View
Scale: 3/4" = 1'-0"

3 Windows Side View
Scale: 3/4" = 1'-0"



2 Windows Top View
Scale: 3/4" = 1'-0"



4 PLATFORM / ARCHWAYS
Scale: 3/4" = 1'-0"

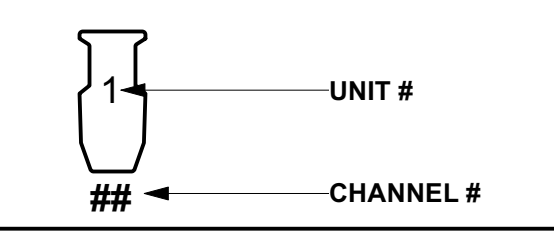
KEY TO SYMBOLS:

- ETC Source 4 26"
- ETC Source 4 36"
- ETC Source 4 50"
- ETC Source 4 70"
- ETC Source 4 PAR (XWFL)
- ETC Color Source PAR Deep Blue
- Mizar 300 Fresnel
- MAC Encore Perf. WRM
- Martin MAC TW1
- GLP Impression X5
- ChromaQ Colorforce II 12
- Chroma-Q Color Force II 48
- Fluorescent 48"
- Sconce / Practical
- Pay Phone / Practical

ACCESSORIES

- ColorRam IT 4" Scroller

LEGEND



THIS DRAWING REPRESENTS VISUAL CONCEPTS AND CONSTRUCTION SUGGESTIONS ONLY.
The Designer is unqualified to determine the structural or electrical appropriateness of this design, and will not assume responsibility for improper engineering, construction, handling, or use. All materials and construction must comply with the most stringent applicable Federal and Local Fire, Safety, Energy, and Environmental Codes.
©2023 TYLER MICOLEAU

NOTES

- PROVIDE EXTRA CUTS OF R132, R119 AND R114 FOR ALL FRAMED SIZES AT FOCUS
- REFER TO LIGHTWEIGHT FOR ALL COLOR, ACCESSORY AND PROFILE INFORMATION
- WRITTEN DIMENSIONS SHALL HAVE PRECEDENCE OVER SCALED DIMENSIONS
- ALL DIMENSIONS ARE FROM CENTER/PLASTER LINE

REV	REVISION	DATE
F		
E		
D		
C	UPDATED CHANNELS	09/25/23
B	FINAL PLOT	09/10/23
A	PRELIMINARY PLOT	08/24/23



DIRECTED BY SAHEEM ALI
SCENERY BY ARNULFO MALDONADO
COSTUMES BY DEDE AYITE
SOUND BY JONATHAN DEANS
LIGHTING BY TYLER MICOLEAU

ATLANTIC THEATER COMPANY
NEW YORK, NY

SCALE: 3/4" = 1'-0"
EXCEPT WHERE NOTED
DATE: SEP 25, 2023

DRAWING 5 OF 8

WALL B / PLATFORM