

Moving Lights



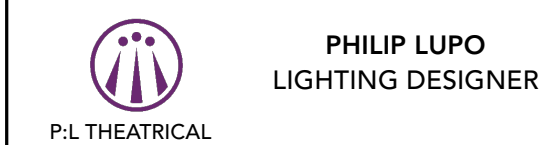
TBD Half Batten
Mode: 16ch RGBW Str Pixel 3

6.25in Top Hat

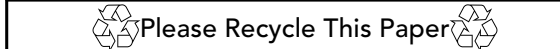


The diagram shows two views of the unit. The left view is a side profile with labels: PURPOSE (pointing to the top), COLOR (pointing to the top), TEMPLATE (pointing to the top), UNIT NO. (pointing to the top), WATTAGE (pointing to the bottom), and CHANNEL (pointing to the bottom). The right view is a top-down view with labels: UNIT NO. (pointing to the top) and CHANNEL (pointing to the bottom). A red area on the top-down view is labeled 'PERF'.

#	DATE	REVISION NOTES
A	6/21/24	First Release For Bid
B	6/22/24	Cuts/Shop Changes, Bid Awarded
C	6/27/24	Shop Prep
D	7/1/24	Load In
E	7/13/24	Freeze



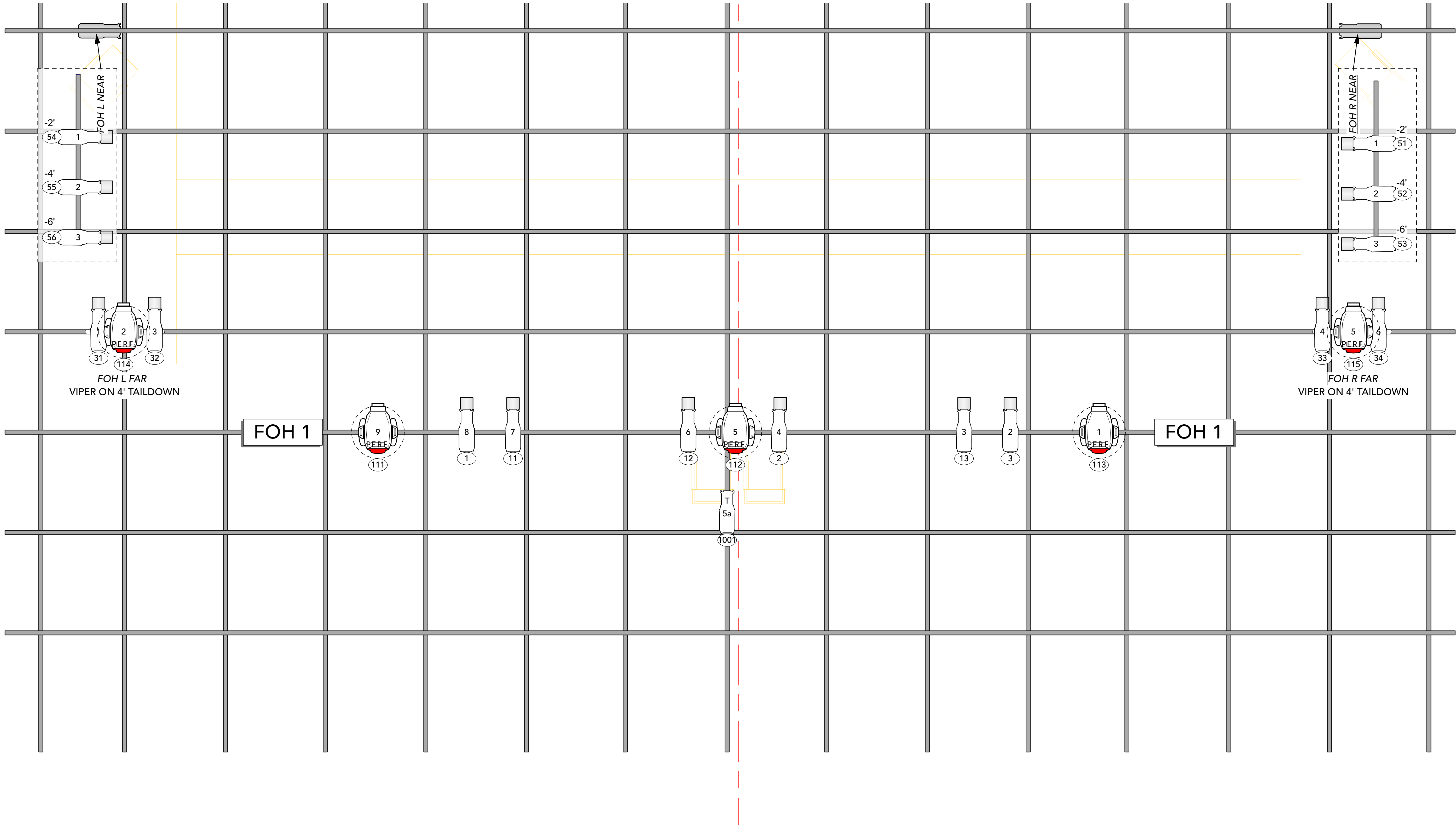
THIS DRAWING REPRESENTS VISUAL CONCEPTS AND CONSTRUCTION SUGGESTIONS ONLY. IT DOES NOT REPLACE THE KNOWLEDGE AND ADVICE OF A LICENSED STRUCTURAL ENGINEER. THE DESIGNER IS UNQUALIFIED TO DETERMINE THE STRUCTURAL APPROPRIATENESS OF THIS DESIGN AND WILL NOT ASSUME RESPONSIBILITY FOR IMPROPER ENGINEERING OR USE.



SCALE: 1/2" = 1'-0"
 CREATED DATE: 8/8/24
 REVISION DATE:

OVERHEAD

Please Print On	US Architectural D (24"x36")
-----------------	------------------------------



INSTRUMENT KEY

Moving Lights

- Mac Viper Perf.
Mode: Ext (40ch)
- Impression X4
Mode: Compress (14ch)
- Impression FR10 Bar
Mode: Multipix (79ch)

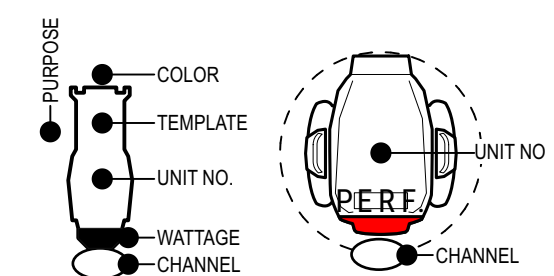
LED Lights

- Ovation Reve E3 36°
Mode: 18ch
- ETC S4-36° Lustr2
Mode: Direct Strobe Fan (10ch)
- TBD Half Batten
Mode: 16ch RGBW Str Pixel 3

Accessories

- Mac Viper Tophat
- 6.25in Top Hat

TYPICAL



#	DATE	REVISION NOTES
A	6/21/24	First Release For Bid
B	6/22/24	Cuts/Shop Changes, Bid Awarded
C	6/27/24	Shop Prep
D	7/1/24	Load In
E	7/13/24	Freeze

PHILIP LUPO
LIGHTING DESIGNER
P:L THEATRICAL



AIN'T DONE BAD

Signature Theatre - Diamond
480 W42nd St, New York NY

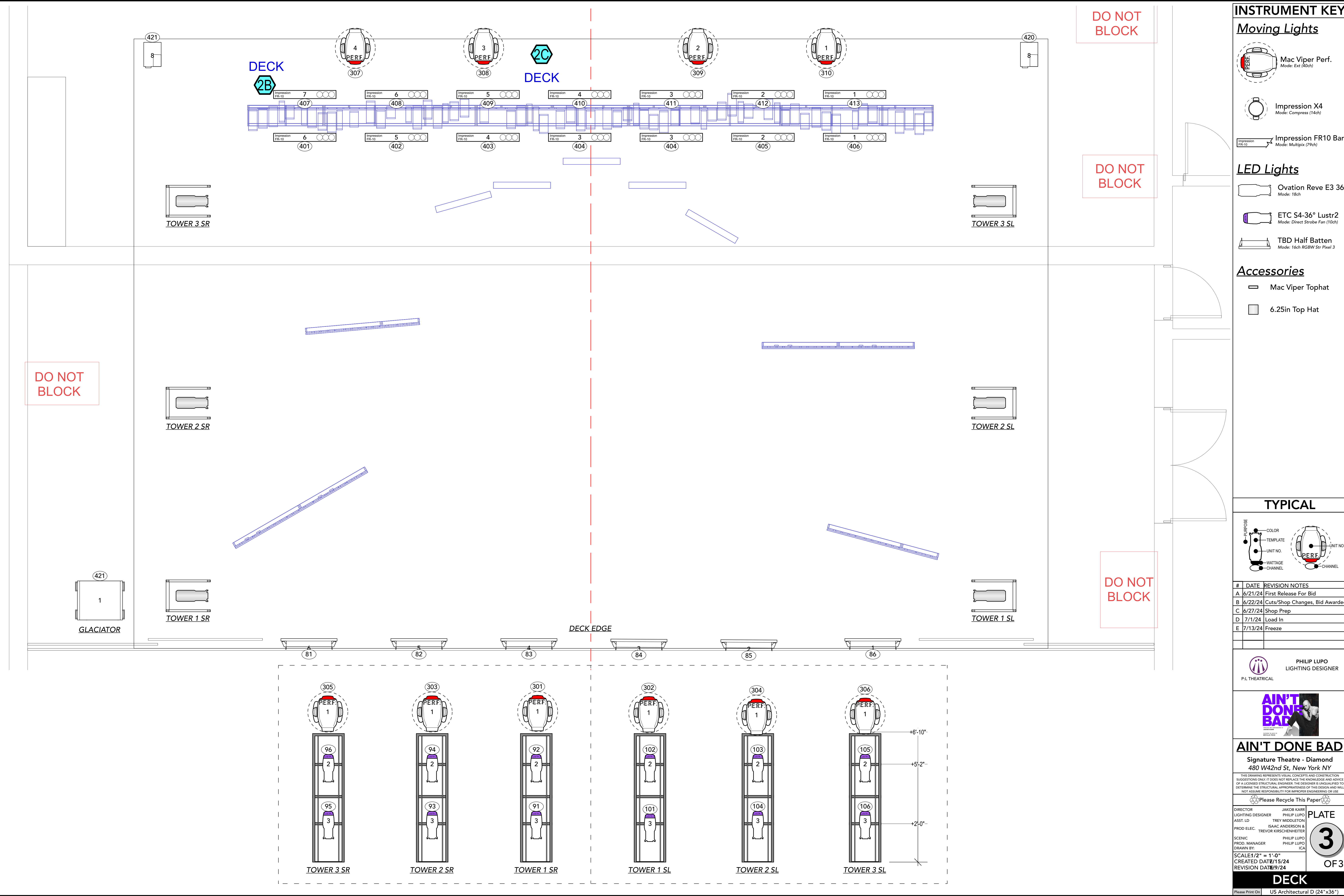
THIS DRAWING REPRESENTS VISUAL CONCEPTS AND CONSTRUCTION SUGGESTIONS ONLY. IT DOES NOT REPLACE THE KNOWLEDGE AND ADVICE OF A LICENSED STRUCTURAL ENGINEER. THE DESIGNER IS UNQUALIFIED TO DETERMINE THE STRUCTURAL APPROPRIATENESS OF THIS DESIGN AND WILL NOT ASSUME RESPONSIBILITY FOR IMPROPER ENGINEERING OR USE.

Please Recycle This Paper

DIRECTOR: JAKOB KARR
LIGHTING DESIGNER: PHILIP LUPO
ASST. LD: TREV MIDDLETON
PROD ELEC: ISAAC ANDERSON & TREVOR KIRSCHENHEITER
SCENIC: PHILIP LUPO
PROD. MANAGER: PHILIP LUPO
DRAWN BY: PHILIP LUPO
SCALE: 1/2" = 1'-0"
CREATED DATE: 8/8/24
REVISION DATE:

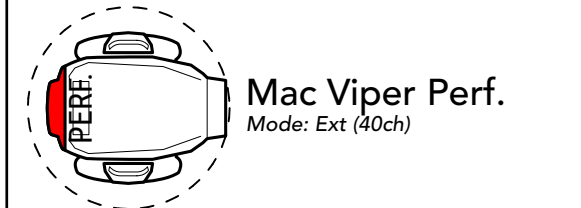
PLATE
2
OF 3

FOH
Please Print On US Architectural D (24"x36")



INSTRUMENT KEY

Moving Lights



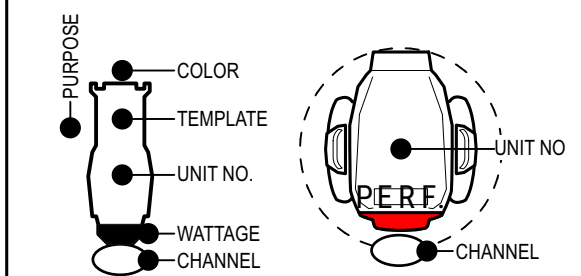
LED Lights



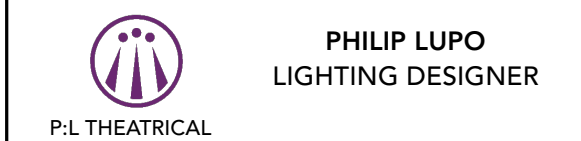
Accessories



TYPICAL



#	DATE	REVISION NOTES
A	6/21/24	First Release For Bid
B	6/22/24	Cuts/Shop Changes, Bid Awarded
C	6/27/24	Shop Prep
D	7/1/24	Load In
E	7/13/24	Freeze



AIN'T DONE BAD
Signature Theatre - Diamond
480 W42nd St, New York NY

THIS DRAWING REPRESENTS VISUAL CONCEPTS AND CONSTRUCTION SUGGESTIONS ONLY. IT DOES NOT REPLACE THE KNOWLEDGE AND ADVICE OF A LICENSED STRUCTURAL ENGINEER. THE DESIGNER IS UNQUALIFIED TO DETERMINE THE STRUCTURAL APPROPRIATENESS OF THIS DESIGN AND WILL NOT ASSUME RESPONSIBILITY FOR IMPROPER ENGINEERING OR USE.

DIRECTOR	JAKOB KARR	PLATE 3 OF 3
LIGHTING DESIGNER	PHILIP LUPO	
ASST. LD.	TREY MIDDLETON	
PROD. ELEC.	ISAAC ANDERSON & TREVOR KIRSCHENHEITER	
SCENIC	PHILIP LUPO	
PROD. MANAGER	PHILIP LUPO	
DRAWN BY:	ICA	
SCALE	1/2" = 1'-0"	
CREATED DATE	6/15/24	
REVISION DATE	6/9/24	

DECK
Please Print On US Architectural D (24"x36")