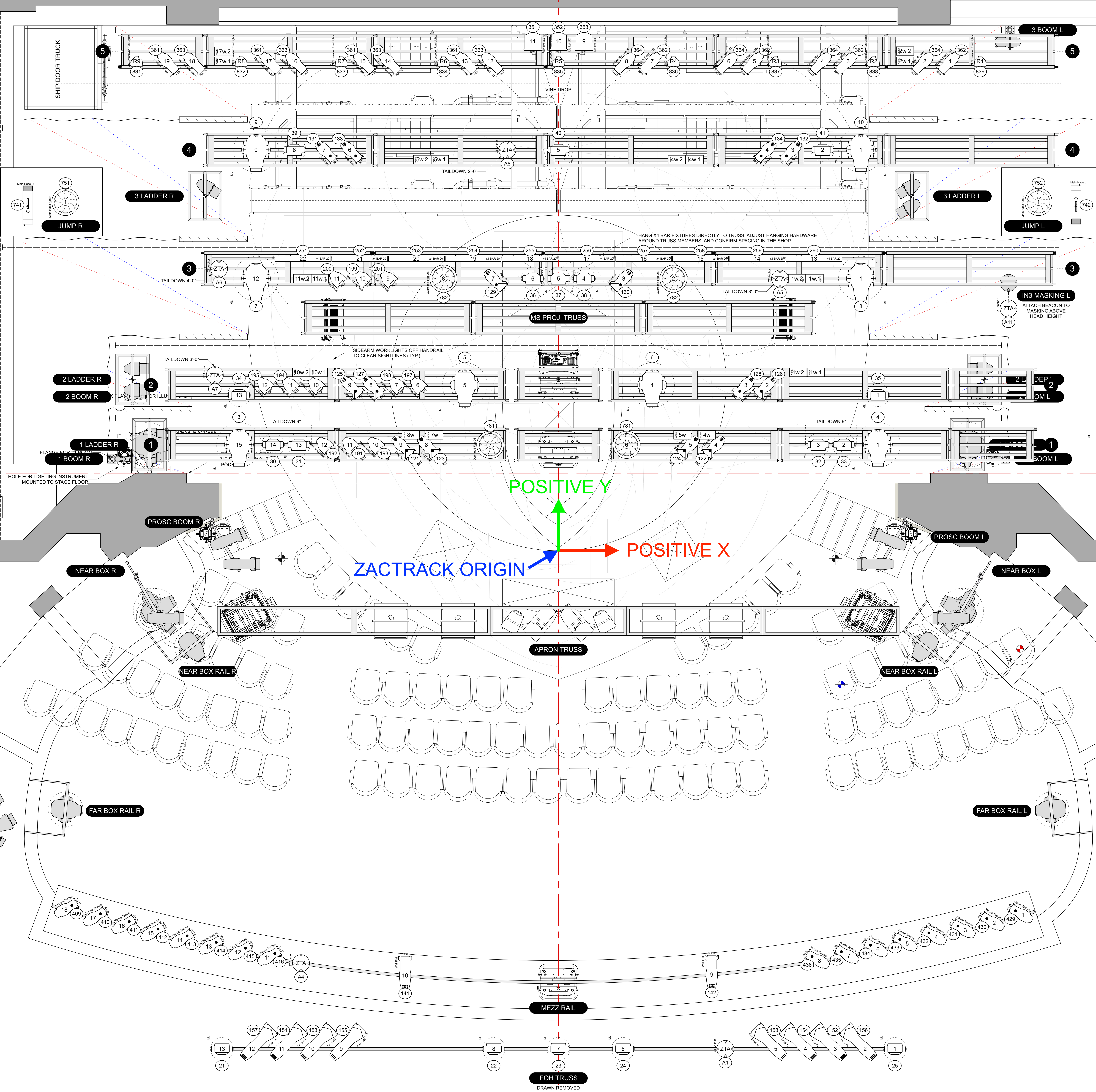


TRIMS FROM HOUSE STAGE FLOOR

FULL STAGE BLACK	26'-0"
#5 ELECTRIC	24'-9"
VINE DROP	22'-6"
#4 LEGS	20'-9"
#4 BORDER	20'-3"
#4 ELECTRIC	18'-11"
#3 LEGS	13'-9"
#3 BORDER	13'-3"
#3 ELECTRIC	12'-0"
M3 PROJECTOR TRUSS	9'-2"
#2 LEGS	8'-0"
#2 BORDER	7'-6"
#2 ELECTRIC	5'-2"
#1 LEGS	3'-9"
#1 BORDER	3'-3"
#1 ELECTRIC	1'-8"
VALANCE	0'-3"
PLASTER LINE	0'-0"

TRIM	NAME	DIST	US
			ELECTRIFIED PIECE



- KEY:**
- S4-14 @ 575w
  - S4-19 @ 575w
  - S4-26 @ 575w
  - S4-36 @ 575w
  - S4-50 @ 575w
  - S4 PAR VNSP @ 575w
  - S4 PAR NSP @ 575w
  - S4 PAR MFL @ 575w
  - S4 PAR WFL @ 575w
  - S4 PAR XWFL @ 575w
  - S4-19 LED S2 Lustr @ 171w
  - S4-26 LED S2 Lustr @ 171w
  - S4-36 LED S2 Lustr @ 171w
  - S4-50 LED S2 Lustr @ 171w
  - S4-14 LED S3 Lustr @ 250w
  - S4-19 LED S3 Lustr @ 250w
  - S4-26 LED S3 Lustr @ 250w
  - S4-36 LED S3 Lustr @ 250w
  - S4-50 LED S3 Lustr @ 250w
  - 10' Fresnel @ 2kw
  - Ari 650 Fresnel @ 650w
  - Mac Aura PXL @ 500w
  - Mac Ultra Performance @ 1.45kw
  - Mac Encore CLD Performance @ 700w

- LEGEND:**
- SOFT FOCUS DIFFUSOR
  - A-SIZE TEMPLATE HOLDER
  - UNIT NUMBER
  - DIMMER DOUBLE
  - CHANNEL NUMBER

THIS DRAWING REPRESENTS VISUAL CONCEPTS AND CONSTRUCTION SUGGESTIONS ONLY.

The Designer is unqualified to determine the structural or electrical appropriateness of this design, and will not assume responsibility for improper engineering, construction, handling, or use. All materials and construction must comply with the most stringent applicable Federal and Local Fire, Safety, Energy, and Environmental Codes.

©2022/2023 TIM LUTKIN

**LIGHTING BY**  
**TIM LUTKIN**  
 ASSOCIATE DESIGNER  
 PAUL TOBEN  
 Cell: +1 650-269-0715  
 paul.toben@gmail.com

COMBINED SET/SOUND/VIDEO	2023-01-31	
FIRST DRAWING ISSUE	2022-12-12	
REV	REVISION	DATE

SIMON FRIEND PRODUCTIONS PRESENTS:

**LIFE OF PI**

SCHOENFELD THEATER  
 BROADWAY

DIRECTED BY: MAX WEBSTER  
 SCENERY BY: TIM HATLEY  
 SOUND BY: CAROLYN DOWNING  
 LIGHTING BY: TIM LUTKIN

**LIGHT PLOT**

SCALE: 1/2" = 1'-0" EXCEPT WHERE NOTED

DATE: 2023-01-31

DRAWN: PT

**1**  
OF 5