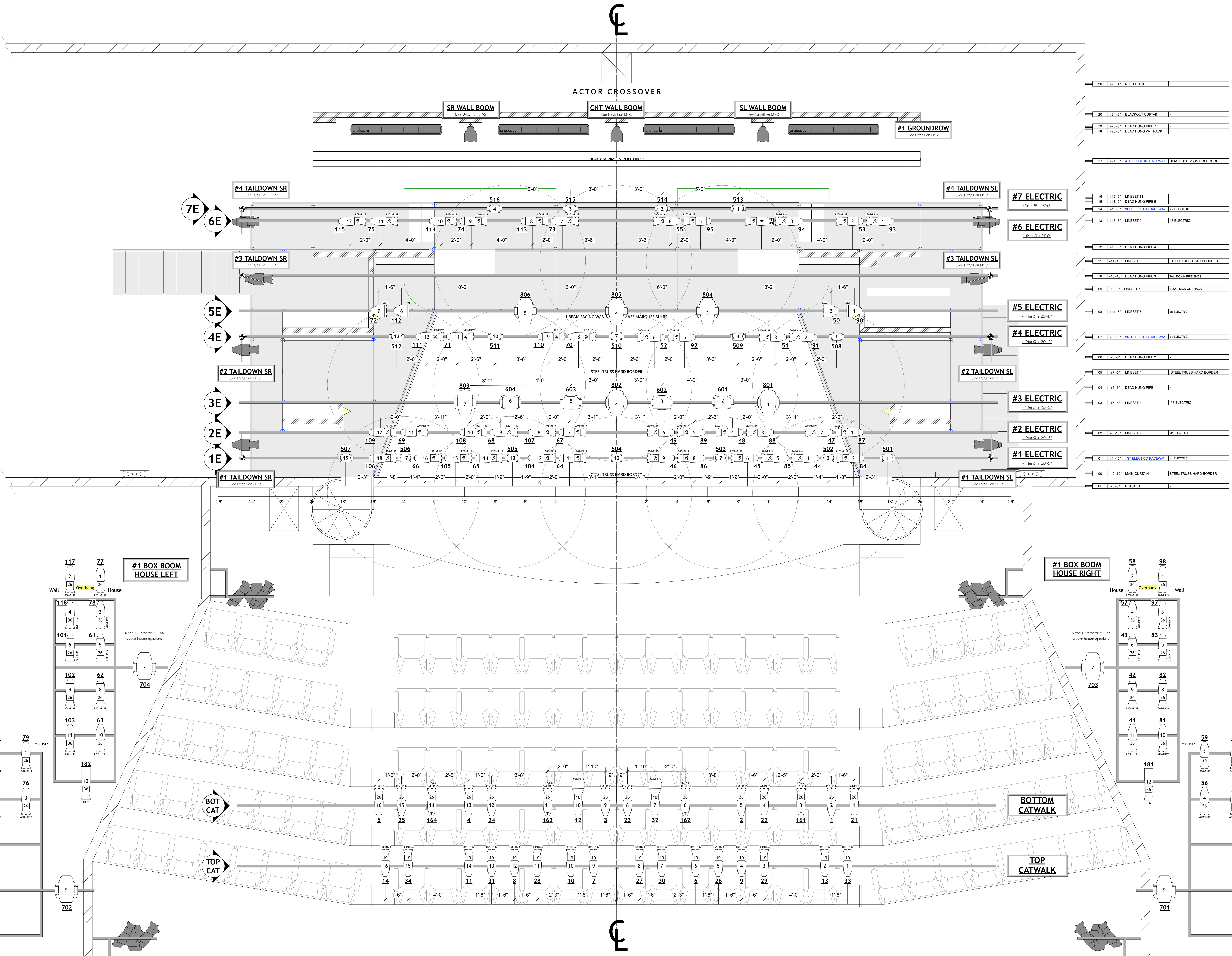


KEY TO SYMBOLS:

- ETC S4 10° 2
- ETC S4 19° 16
- ETC S4 26° 46
- ETC S4 36° 44
- ETC S4 50° 6
- ETC ColorSource Deep Blue 36° 6
- ETC ColorSource Deep Blue 50° 4
- S4 PAR WFL 30
- Wybron CXI 4
- Practical 16
- Elaton Artiste Picasso 4
- Elaton Satira Profile 6
- Martin Mac Aura 18
- Elaton Platinum Seven 4

- LEGEND NOTATION:**
- 877774 Gobo
 - 6847 Color
 - Scroller
 - Barrel Type
 - 00 Unit #
 - Channel # 22



| | | |
|----|----------|---|
| 20 | -25'-4" | NOT FOR USE |
| 20 | -24'-0" | BLACKOUT CURTAIN |
| 19 | -23'-0" | DEAD HUNG PIPE 5 |
| 18 | -23'-0" | DEAD HUNG W/ TRACK |
| 17 | -21'-5" | 4TH ELECTRIC RACEWAY BLACK SCRIM ON ROLL DROP |
| 16 | -19'-0" | LINESIT 11 |
| 15 | -18'-0" | DEAD HUNG PIPE 5 |
| 14 | -18'-3" | 3RD ELECTRIC RACEWAY #7 ELECTRIC |
| 13 | -17'-0" | LINESIT 9 |
| 12 | -15'-0" | DEAD HUNG PIPE 4 |
| 11 | -14'-10" | LINESIT 8 |
| 10 | -13'-10" | DEAD HUNG PIPE 3 |
| 09 | -13'-0" | LINESIT 7 |
| 08 | -11'-0" | LINESIT 6 |
| 07 | -9'-10" | 2ND ELECTRIC RACEWAY #4 ELECTRIC |
| 06 | -8'-8" | DEAD HUNG PIPE 2 |
| 05 | -7'-6" | LINESIT 4 |
| 04 | -5'-0" | DEAD HUNG PIPE 1 |
| 03 | -4'-5" | LINESIT 3 |
| 02 | -3'-10" | LINESIT 2 |
| 01 | -1'-10" | 1ST ELECTRIC RACEWAY #1 ELECTRIC |
| PL | -0'-0" | PLASTER |

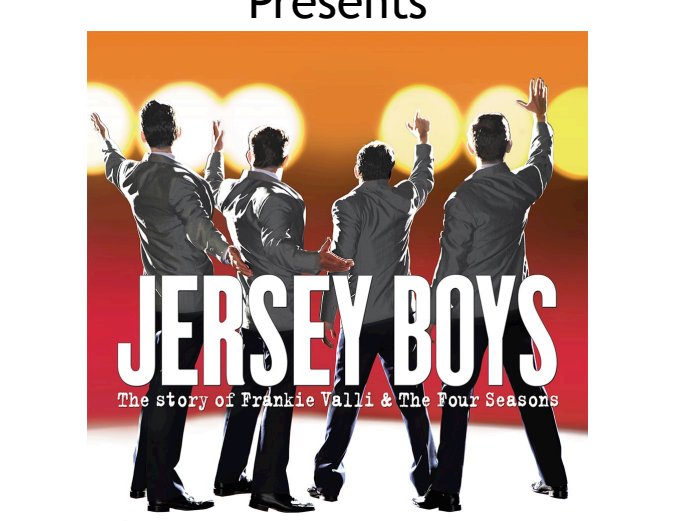
- NOTES:**
- ALL SPACING ON 1'-6" CENTERS UNLESS OTHERWISE NOTED.
 - ALL DIMENSIONS ARE FROM CENTER LINE.
 - ALL GEL FRAMES BLACK.
 - ALL TEMPLATES A-SIZE IF POSSIBLE.
 - PLEASE PROVIDE SPARE R119, R132, DONUTS BLACKWRAP, BLACKTAK, BARN DOORS, TOP HATS & HALF HATS AT FOCUS.
 - ALL ELECTRIC TRIMS ARE FROM SHOW DECK TO BOTTOM OF PIPE.
 - ALL BOOM & TAIL DOWN HEIGHTS ARE FROM BOTTOM OF PIPE TO CENTER OF C-CLAMP.
 - PLEASE HAVE ALL COLOR, TEMPLATES AND ACCESSORIES IN AND ON UNITS BEFORE FOCUS.
 - PLEASE NOTE THE STRIPLIGHT, DECK MOUNT, AND HANGING DETAILS.
 - ALL INSTRUMENTS TO BE SHAKEN NOT STIRRED.



THIS DRAWING REPRESENTS A LIGHTING DESIGN THAT IS WHOLLY OWNED BY MATTHEW GUMINSKI. ANY USE OR DISTRIBUTION OF THIS DRAWING OTHER THAN AS REQUIRED FOR PRODUCING THE FULL PRODUCTION OF SHOWING IT LIVE IS EXPRESSLY PROHIBITED AND IS A VIOLATION OF COPYRIGHT LAWS IN THE US AND INTERNATIONAL. ANY GRANTING OF PERMISSION TO USE THIS DESIGN IN A LEGAL ACTION OR BENEATH OF THE DESIGNER, THIS DRAWING, AND THE LIGHTING DESIGN ITSELF, IS ©2022 MATTHEW GUMINSKI. ALL RIGHTS RESERVED.

THIS DRAWING REPRESENTS VISUAL CONCEPTS AND DESIGN INTENTS. THE DESIGNER AND HIS ASSISTANTS ARE RESPONSIBLE FOR THE VISUAL ASPECTS OF THE PRODUCTION ONLY AND ALL OPERATIONS CONTAINED HEREIN RELATE SOLELY TO THE VISUAL APPEARANCE OF THE LIGHTING AND NOT TO MATTERS OF ELECTRICAL OR STRUCTURAL SOUNDNESS AND SAFETY. THIS DRAWING DOES NOT REPLACE THE KNOWLEDGE AND ADVICE OF A LICENSED STRUCTURAL ENGINEER. THE DESIGNER IS UNQUALIFIED TO DETERMINE THE STRUCTURAL APPROPRIATENESS OF THIS DESIGN AND WILL NOT ASSUME RESPONSIBILITY FOR IMPROPER ENGINEERING OR USE.

white plains performing arts center Presents



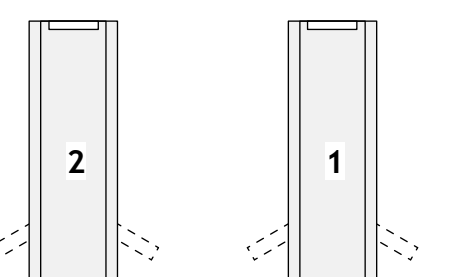
11 City Place 3rd Floor - White Plains, NY 10691

(LP-1) 1/2" LIGHT PLOT

LD: Matthew Guminski
19-19 24th Avenue, #L611
Astoria NY, 11102
Cell #: (978)835-3981
E-Mail: matt@mglightingdesign.com
www.mglightingdesign.com

Directed by: Antoinette DiPietro
Date: 11/19/22 (Ver. 1) ME: Olivier Plamondon
Scale: 1/2" = 1'-0" Set Design: C & J Swader

FOLLOW SPOT



Note: HOUSE FOLLOW SPOTS - Must be atleast 1.2kw
Please have 1 Clear-Com to FOH.

- Colors:
- 1: R132
 - 2: R51
 - 3: R253
 - 4: R09
 - 5: L201
 - 6: L161