

DIST TO PL	LINESET ## - DESCRIPTION	TRIM
+27'-2"	LINE SET #16 - CYC STORAGE	##'-##"
+25'-7"	LINE SET #15 - HG 9 ELECTRIC	24'-3"
+24'-0"	LINE SET #14 - HG 8 ELECTRIC	24'-3"
+22'-5"	LINE SET #13 - HG BORDER/SCRIM/LEGS	25'-10"
+20'-10"	LINE SET #12 - HG 7 ELECTRIC	25'-6"
+18'-10"	LINE SET #11 - HG 6 ELECTRIC	23'-10"
+17'-3"	LINE SET #10 - HG BORDER 4	27'-0"
+13'-0"	LINE SET #9 - HG 5 ELECTRIC	25'-9"
+11'-3"	LINE SET #8 - HG BORDER 3	27'-0"
+9'-3"	LINE SET #7 - HG 4 ELECTRIC	27'-0"
+7'-8"	LINE SET #6 - HG 3 ELECTRIC	24'-6"
+6'-0"	LINE SET #5 - HG BORDER 2	27'-0"
+4'-4"	LINE SET #4 - HG 2 ELECTRIC	27'-0"
+2'-9"	LINE SET #3 - HG 1 ELECTRIC	25'-6"
+1'-0"	LINE SET #2 - HG BORDER 1	27'-0"
-0'-9"	LINE SET #1 - Speaker Truss	26'-6"

INSTRUMENT KEY

Light

- ETC Source4 19deg
- ETC Source4 26deg
- ETC Source4 36deg
- ETC Source4 50deg
- ETC Source4 19deg 750W
- ETC Source4 26deg 750W
- ETC Source4 Zoom 15-30deg 750W
- Robert Juliat Lutin 306 LF
- ARRI ST 2
- ETC Source4 PAR NSP
- ETC ColorSource CYC
- Seachanger ETC Source4 36deg 750W

Moving Light

- Robe Robin T2 Profile

Typical

NOTES

NO	DATE	REVISION
C	3/13/2023	FINAL PLOT
B	3/07/2023	Clean up for Show Run
A	2/25/2023	Prelim drawing

THE HUNTING GUN

Adapted by: Serge Lamothe

Jerome Roberts Theatre
at
Baryshnikov Arts Center
New York, NY
March 2023

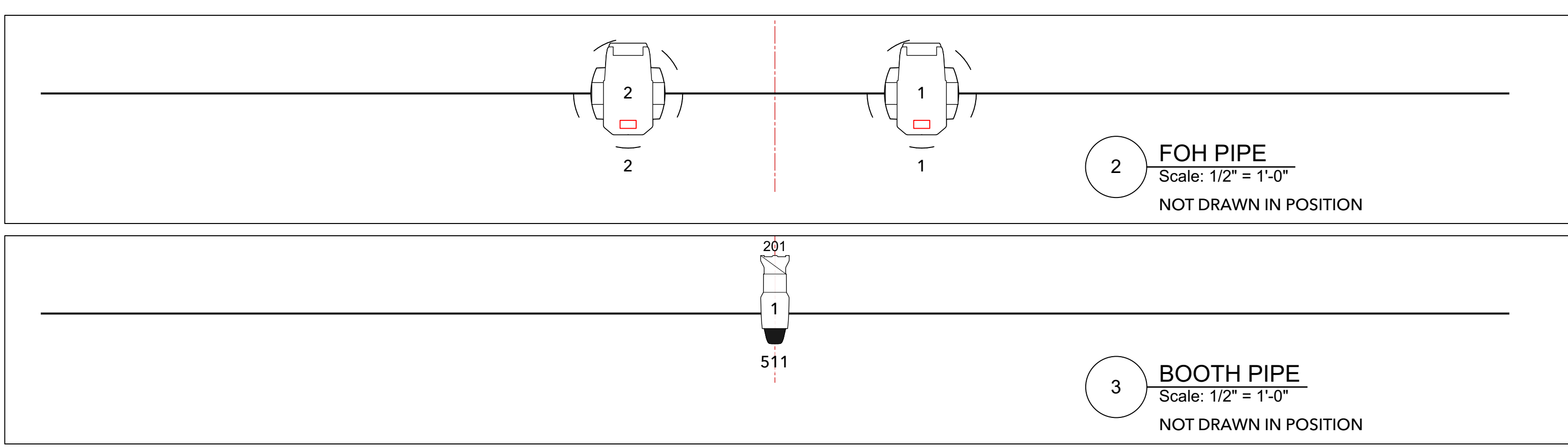
Direction: Francois Girard
 Scenery: Francois Seguin
 Costumes: Renee April
 Lighting: David Finn
 Music: Alexander MacSween

Asst. LD: Christopher Gilmore
 Technical Director: Henry Valoris
 Prod Electrician: Jesse Campbell
 Producer: Cath Brittan

LIGHT PLOT

Drawn By: DF/CG
 Scale: 1/2"=1'-0"
 Issue Date: 03/13/2023

Sheet No: 1
 OF 3



1 OVERSTAGE
Scale: 1/2" = 1'-0"

2 FOH PIPE
Scale: 1/2" = 1'-0"
NOT DRAWN IN POSITION

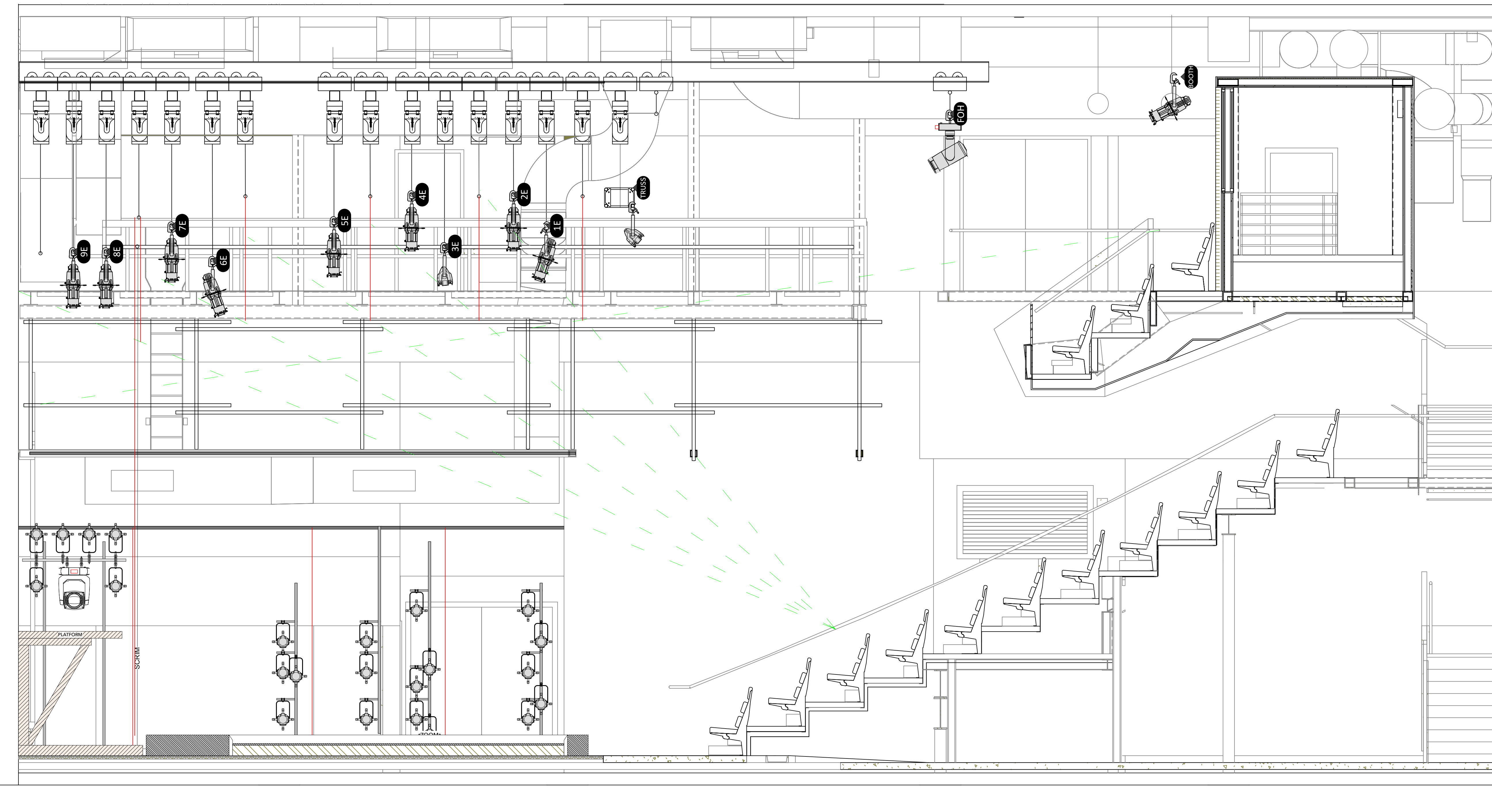
3 BOOTH PIPE
Scale: 1/2" = 1'-0"
NOT DRAWN IN POSITION

NOTE:
U/G = Under Gallery

NOTE: Border hung DS/Scrim tailed down so that bottom of Scrim is 6" off deck w/ Border max out/Legs hung US of scrim on tail down pipe - Align onstage edge of leg with pool edge - weight bottom of legs

NOTE: Try and connect Leg U/G with Leg on Border/Scrim pipe so that masking is continuous. Align onstage edge of ALL U/G legs with edge of platforming - weight the bottom

DIST TO PL	LINESET # - DESCRIPTION	TRIM # - #
+27'-2"	LINE SET #16 - CYC STORAGE	24'-3"
+25'-7"	LINE SET #15 - HG 9 ELECTRIC	24'-3"
+24'-0"	LINE SET #14 - HG 8 ELECTRIC	24'-3"
+22'-5"	LINE SET #13 - HG BORDER/SCRIM/LEGS	25'-10"
+20'-10"	LINE SET #12 - HG 7 ELECTRIC	25'-6"
+18'-10"	LINE SET #11 - HG 6 ELECTRIC	23'-10"
+17'-3"	LINE SET #10 - HG BORDER 4	27'-0"
+13'-0"	LINE SET #9 - HG 5 ELECTRIC	25'-9"
+11'-3"	LINE SET #8 - HG BORDER 3	27'-0"
+9'-5"	LINE SET #7 - HG 4 ELECTRIC	27'-0"
+7'-8"	LINE SET #6 - HG 3 ELECTRIC	24'-6"
+6'-0"	LINE SET #5 - HG BORDER 2	27'-0"
+4'-4"	LINE SET #4 - HG 2 ELECTRIC	27'-0"
+2'-9"	LINE SET #3 - HG 1 ELECTRIC	25'-6"
+1'-0"	LINE SET #2 - HG BORDER 1	27'-0"
-0'-9"	LINE SET #1 - Speaker Truss	26'-6"



INSTRUMENT KEY

- Light**
- ETC Source4 19deg
 - ETC Source4 26deg
 - ETC Source4 36deg
 - ETC Source4 50deg
 - ETC Source4 19deg 750W
 - ETC Source4 26deg 750W
 - ETC Source4 Zoom 15-30deg 750W
 - Robert Juliat Lutin 306 LF
 - ARRI ST 2
 - ETC Source4 PAR NSP
 - ETC ColorSource CYC
 - Seachanger ETC Source4 36deg 750W
- Moving Light**
- Robe Robin T2 Profile
- Typical**
-

NOTES

NO	DATE	REVISION
C	3/13/2023	FINAL PLOT
B	3/07/2023	Clean up for Show Run
A	2/25/2023	Prelim drawing

THE HUNTING GUN
Adapted by: Serge Lamothe

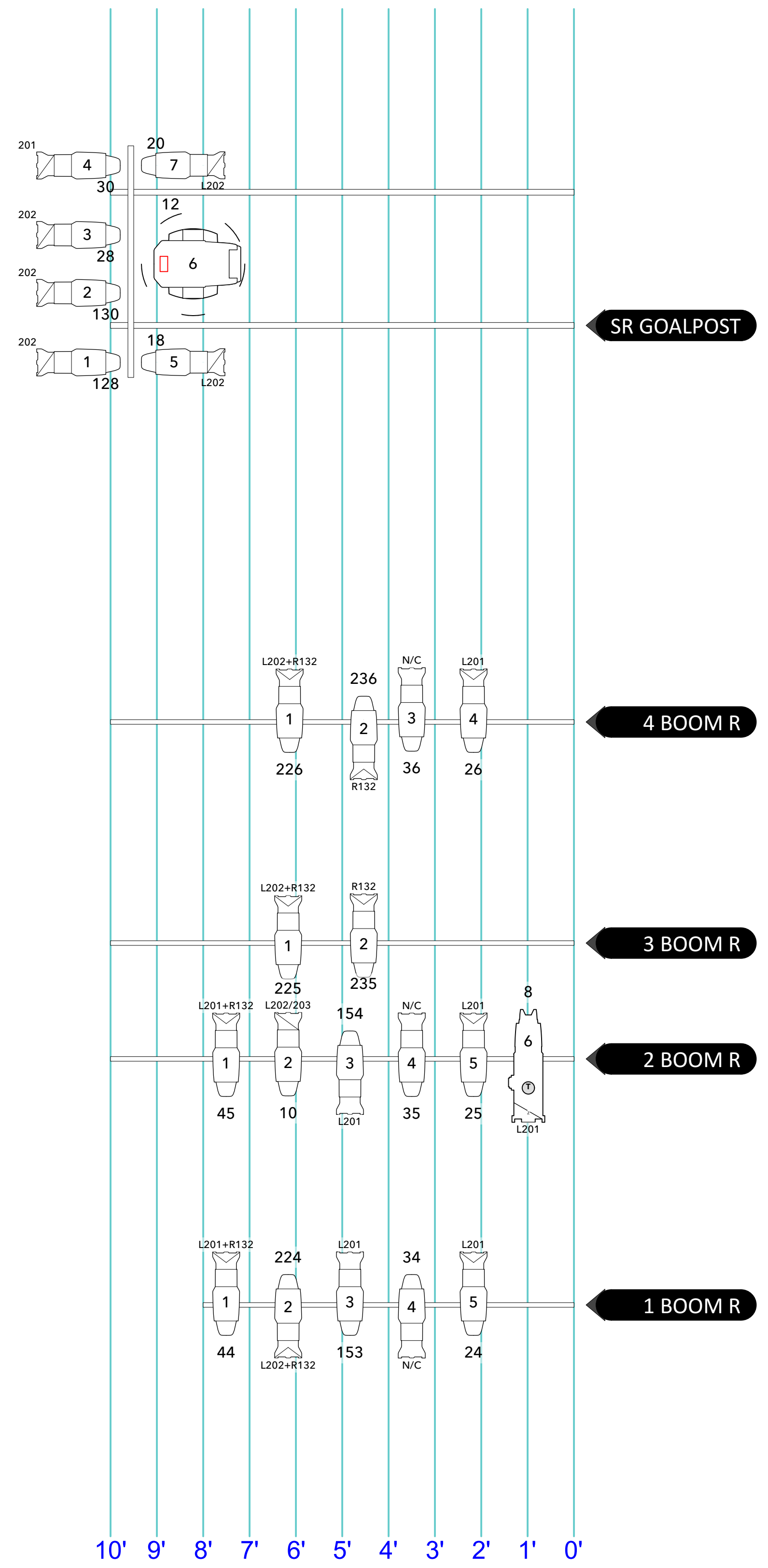
Jerome Roberts Theatre
at
Baryshnikov Arts Center
New York, NY
March 2023

Direction	Francois Girard
Scenery	Francois Seguin
Costumes	Renee April
Lighting	David Finn
Music	Alexander MacSween
Asst. LD	Christopher Gilmore
Technical Director	Henry Valoris
Prod Electrician	Jesse Campbell
Producer	Cath Brittan

SECTION

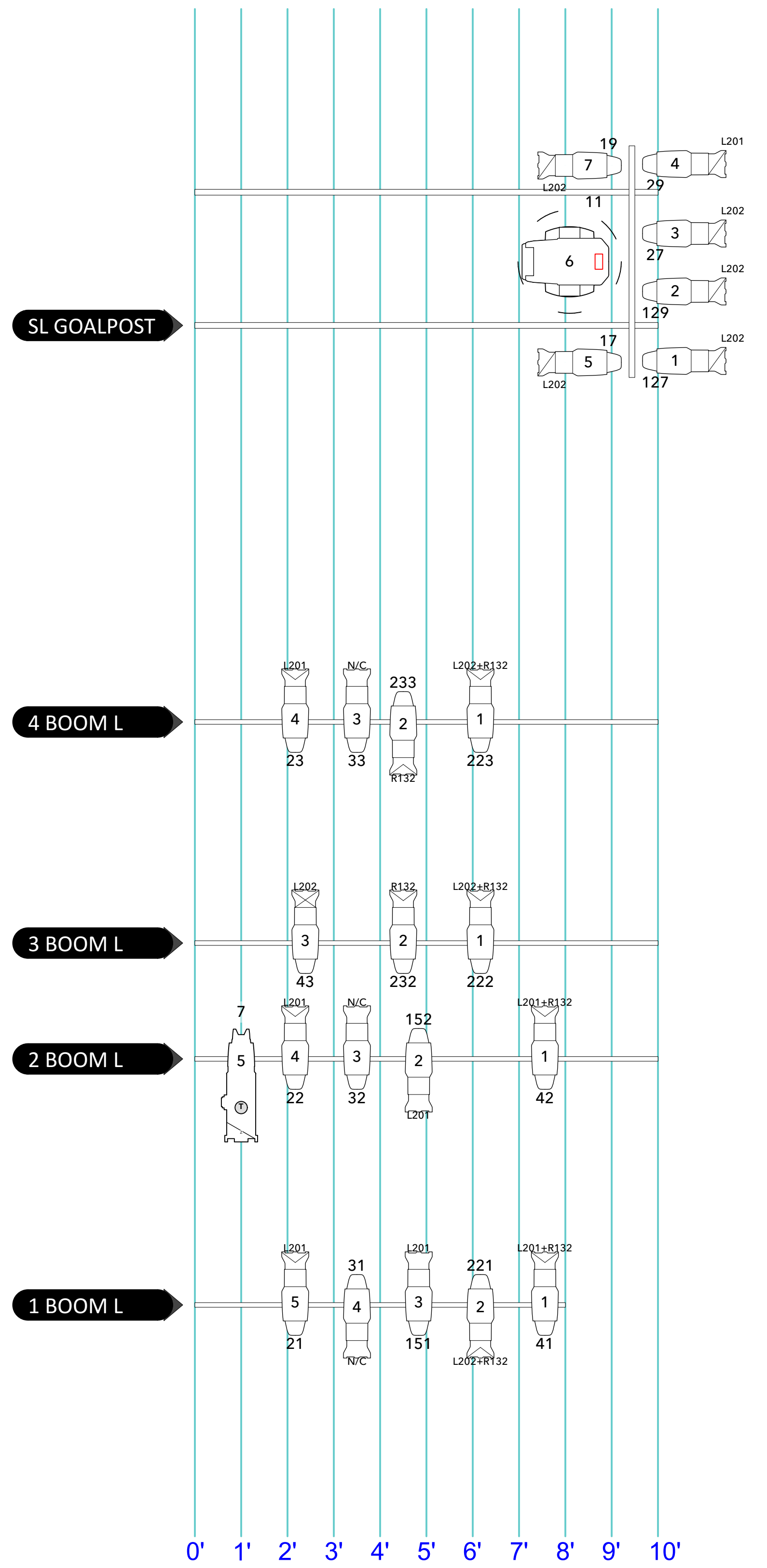
Drawn By:	DF/CG	Sheet No:	2
Scale:	1/2" = 1'-0"		
Issue Date:	03/13/2023		

OF 3



NOTE: All boom units to be hung on sidearms if possible

2 SR BOOMS
Scale: 1/2" = 1'-0"



NOTE: All boom units to be hung on sidearms if possible

1 SL BOOMS
Scale: 1/2" = 1'-0"

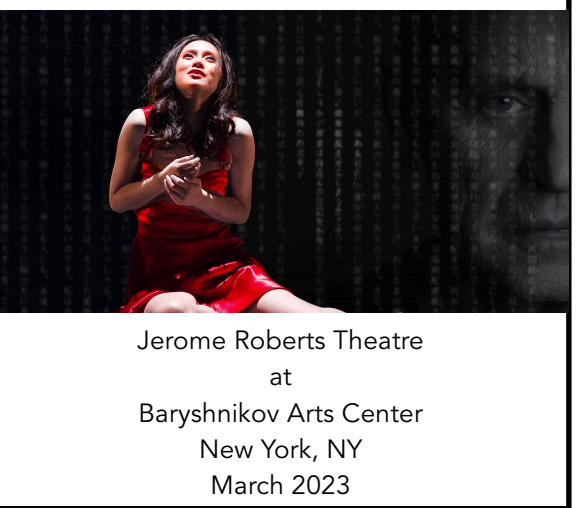
INSTRUMENT KEY

- Light
- ETC Source4 19deg
 - ETC Source4 26deg
 - ETC Source4 36deg
 - ETC Source4 50deg
 - ETC Source4 19deg 750W
 - ETC Source4 26deg 750W
 - ETC Source4 Zoom 15-30deg 750W
 - Robert Juliat Lutin 306 LF
 - ARRI ST 2
 - ETC Source4 PAR NSP
 - ETC ColorSource CYC
 - Seachanger ETC Source4 36deg 750W
- Moving Light
- Robe Robin T2 Profile
- Typical
-

NOTES

C	3/13/2023	FINAL PLOT
B	3/07/2023	Clean up for Show Run
A	2/25/2023	Prelim drawing
NO	DATE	REVISION

THE HUNTING GUN



Direction: Francois Girard
 Scenery: Francois Seguin
 Costumes: Renee April
 Lighting: David Finn
 Music: Alexander MacSween

Asst. LD: Christopher Gilmore
 Technical Director: Henry Valoris
 Prod Electrician: Jesse Campbell
 Producer: Cath Brittan

BOOMS

Drawn By: DF/CG	Sheet No: 3
Scale: 1/2" = 1'-0"	
Issue Date: 03/13/2023	OF 3