
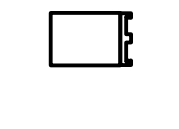
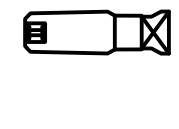
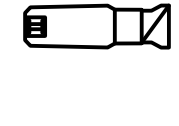
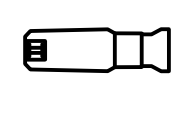
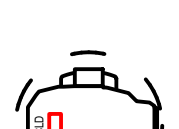
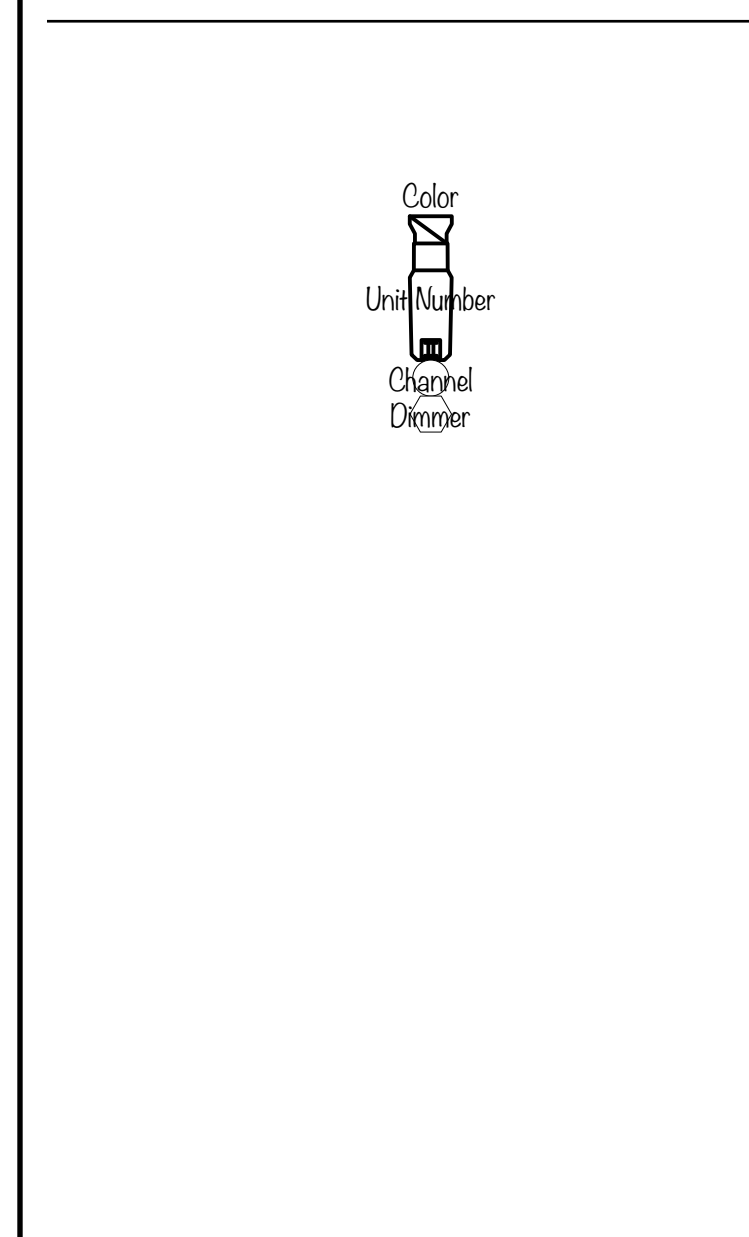


INSTRUMENT KEY

-  ETC ColorSource PAR CE Wide Round
-  ETC FOS4 FL7
-  ETC Source4 LED2LS 19deg
-  ETC Source4 LED2LS 26deg
-  ETC Source4 LED2LS 36deg
-  Martin MAC Encore Performance LD



NOTES

- * All Lustr S4 should have top hat.
- Discuss exact sizes with LD
- * There will be a minimal amount of gobos and custom gobos in Lustrs and Encores. LD to provide numbers and artwork ASAP

B	4/19/23	Final Light Plot
A	4/9/23	Preliminary Light Plot
NO.	Date	Revisions

Brokeback Mountain
Ashley Robinson

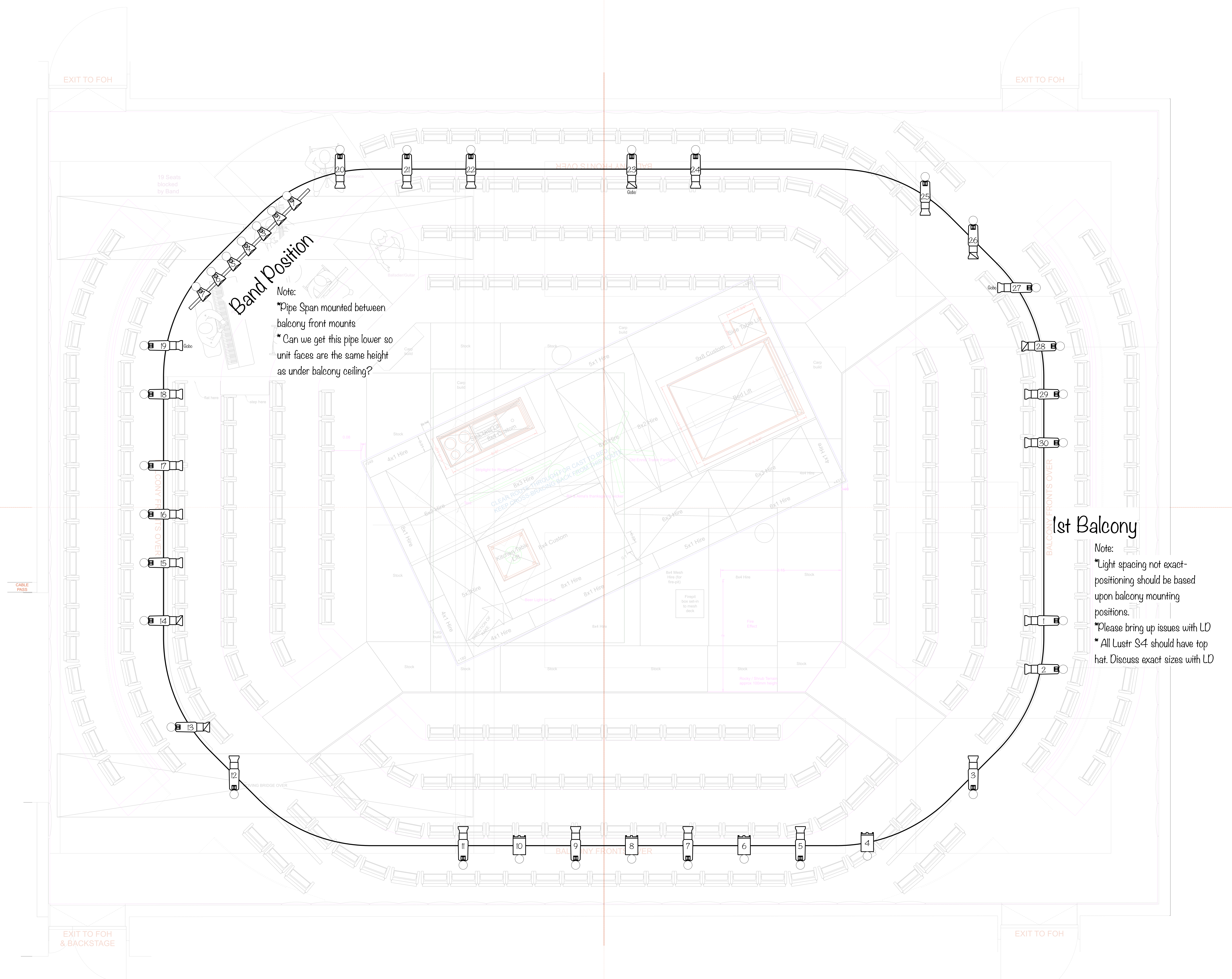
Soho Place
London, England
May 2023

DIRECTION: Jonathan Butterell
SCENERY: Tom Dye
COSTUMES: Tom Dye
LIGHTING: David Finn

ASSOC. LD: Simon Bennison
PROD. MANAGER: Phil Wilding
PROD. ELECTRICIAN: Ian Mouldie
PRODUCER: Nimax Theatre Ltd.

1st Balcony Plot

DRAWN BY:	DF/CMP	Sheet No.
SCALE:	1:25.00	1
ISSUE DATE:	4/19/23	

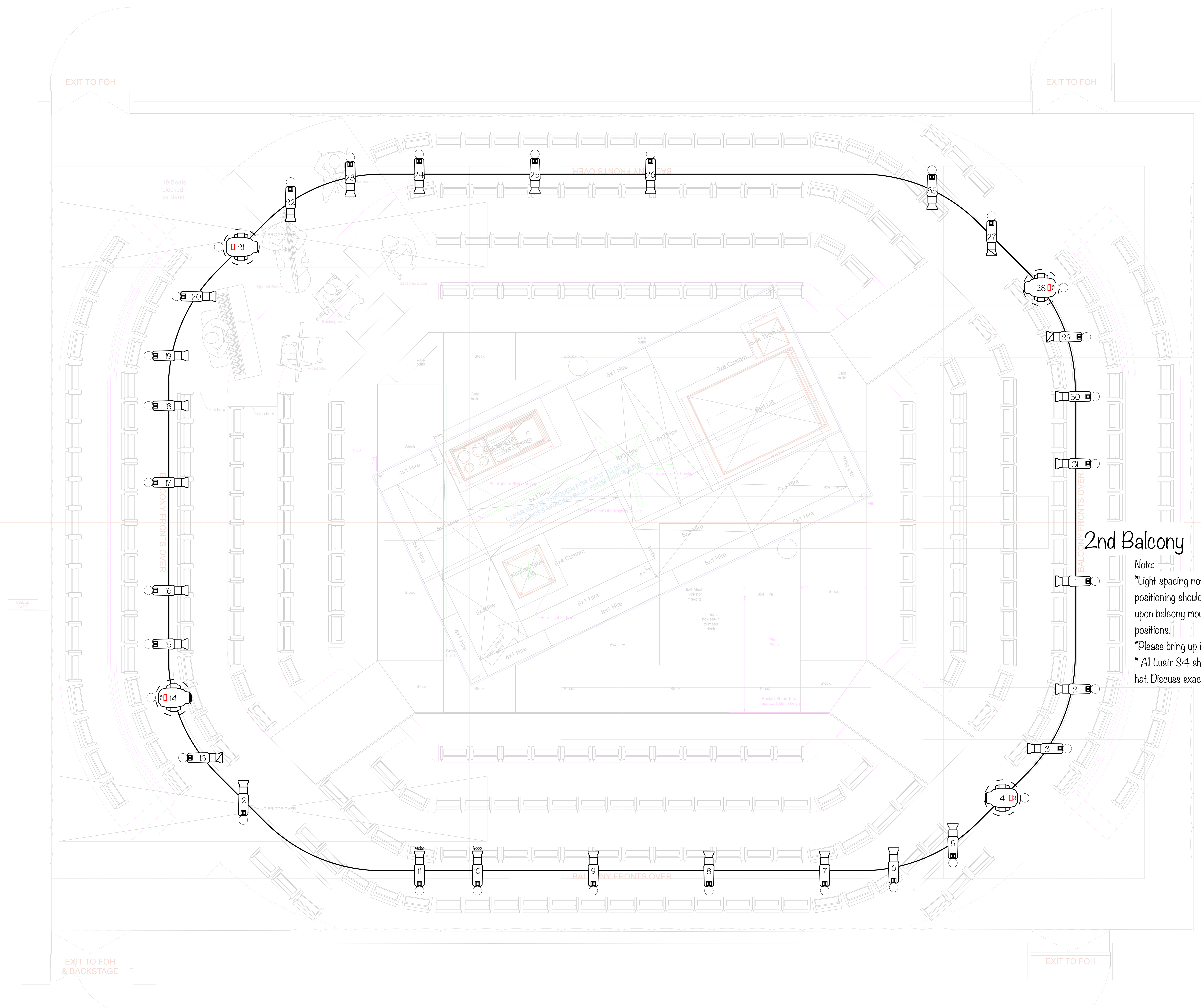


Band Position

- Note:
- * Pipe Span mounted between balcony front mounts
 - * Can we get this pipe lower so unit faces are the same height as under balcony ceiling?

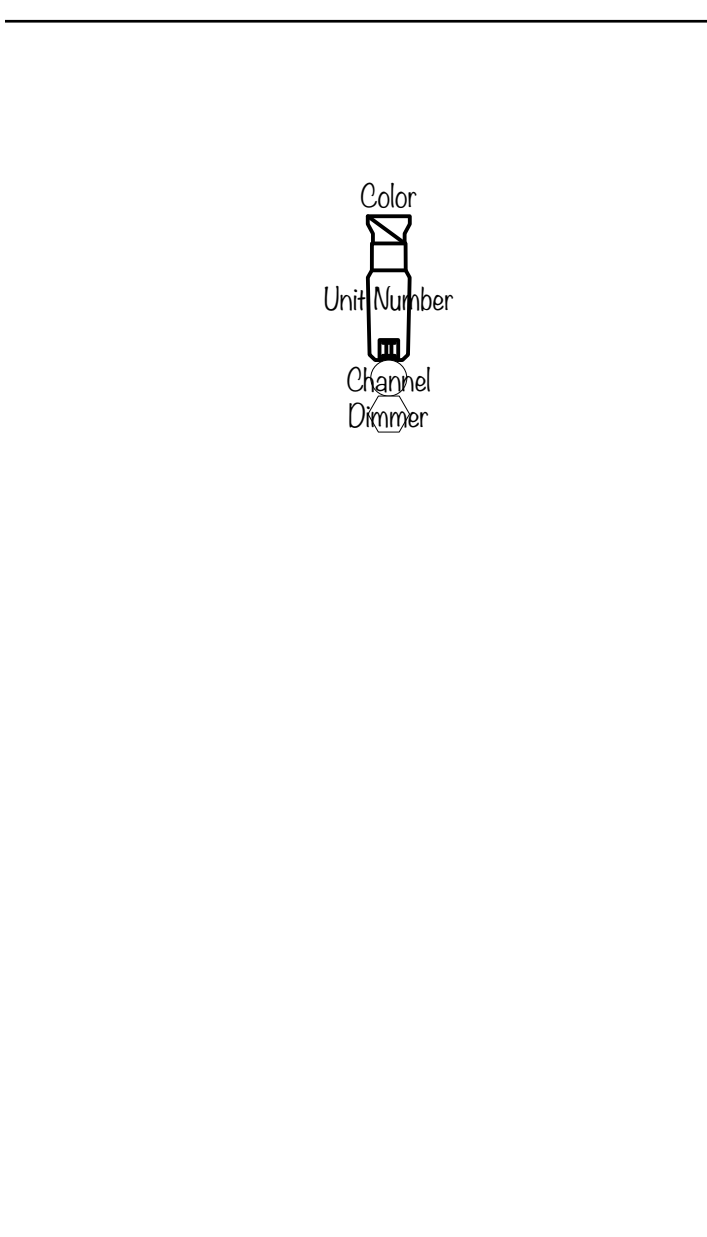
1st Balcony

- Note:
- * Light spacing not exact - positioning should be based upon balcony mounting positions.
 - * Please bring up issues with LD
 - * All Lustr S4 should have top hat. Discuss exact sizes with LD



INSTRUMENT KEY

- ETC ColorSource PAR CE Wide Round
- ETC FOS4 FL7
- ETC Source4 LED2LS 19deg
- ETC Source4 LED2LS 26deg
- ETC Source4 LED2LS 36deg
- Martin MAC Encore Performance LD



NOTES

- * All Lustr S4 should have top hat. Discuss exact sizes with LD
- * There will be a minimal amount of gobos and custom gobos in Lustrs and Encores. LD to provide numbers and artwork ASAP

2nd Balcony

- Note:
- * Light spacing not exact-positioning should be based upon balcony mounting positions.
 - * Please bring up issues with LD
 - * All Lustr S4 should have top hat. Discuss exact sizes with LD

B	4/19/23	Final Light Plot
A	4/9/23	Preliminary Light Plot
NO.	Date	Revisions

Brokeback Mountain
Ashley Robinson

Soho Place
London, England
May 2023


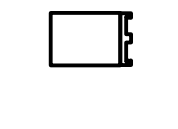
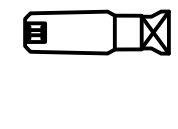
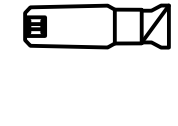
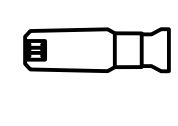
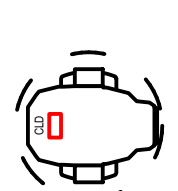
DIRECTION Jonathan Butterell
SCENERY Tom Dye
COSTUMES Tom Dye
LIGHTING David Finn

ASSOC. LD Simon Bennison
PROD. MANAGER Phil Wilding
PROD. ELECTRICIAN Ian Mouldie
PRODUCER Nimax Theatre Ltd.

2nd Balcony Plot

DRAWN BY: DF/CMP	Sheet No. 2
SCALE: 1:25.00	
ISSUE DATE: 4/19/23	

INSTRUMENT KEY

-  ETC ColorSource PAR CE Wide Round
-  ETC FOS4 FL7
-  ETC Source4 LED2LS 19deg
-  ETC Source4 LED2LS 26deg
-  ETC Source4 LED2LS 36deg
-  Martin MAC Encore Performance CLD



NW Boom

Note:
* All Lustr S4 should have top hat. Discuss exact sizes with LD

NOTES

* All Lustr S4 should have top hat. Discuss exact sizes with LD
 * There will be a minimal amount of gobos and custom gobos in Lustrs and Encores. LD to provide numbers and artwork ASAP

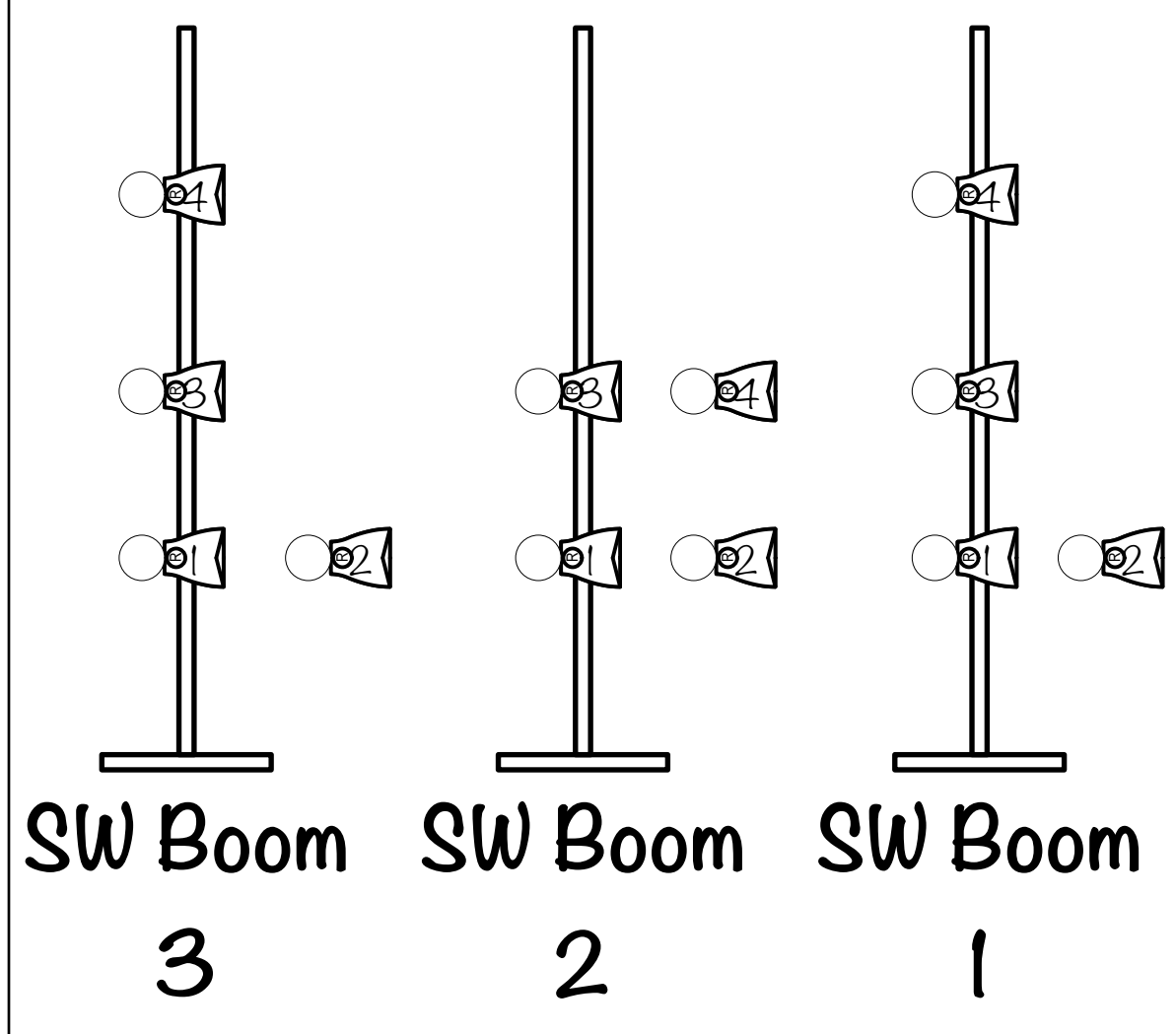
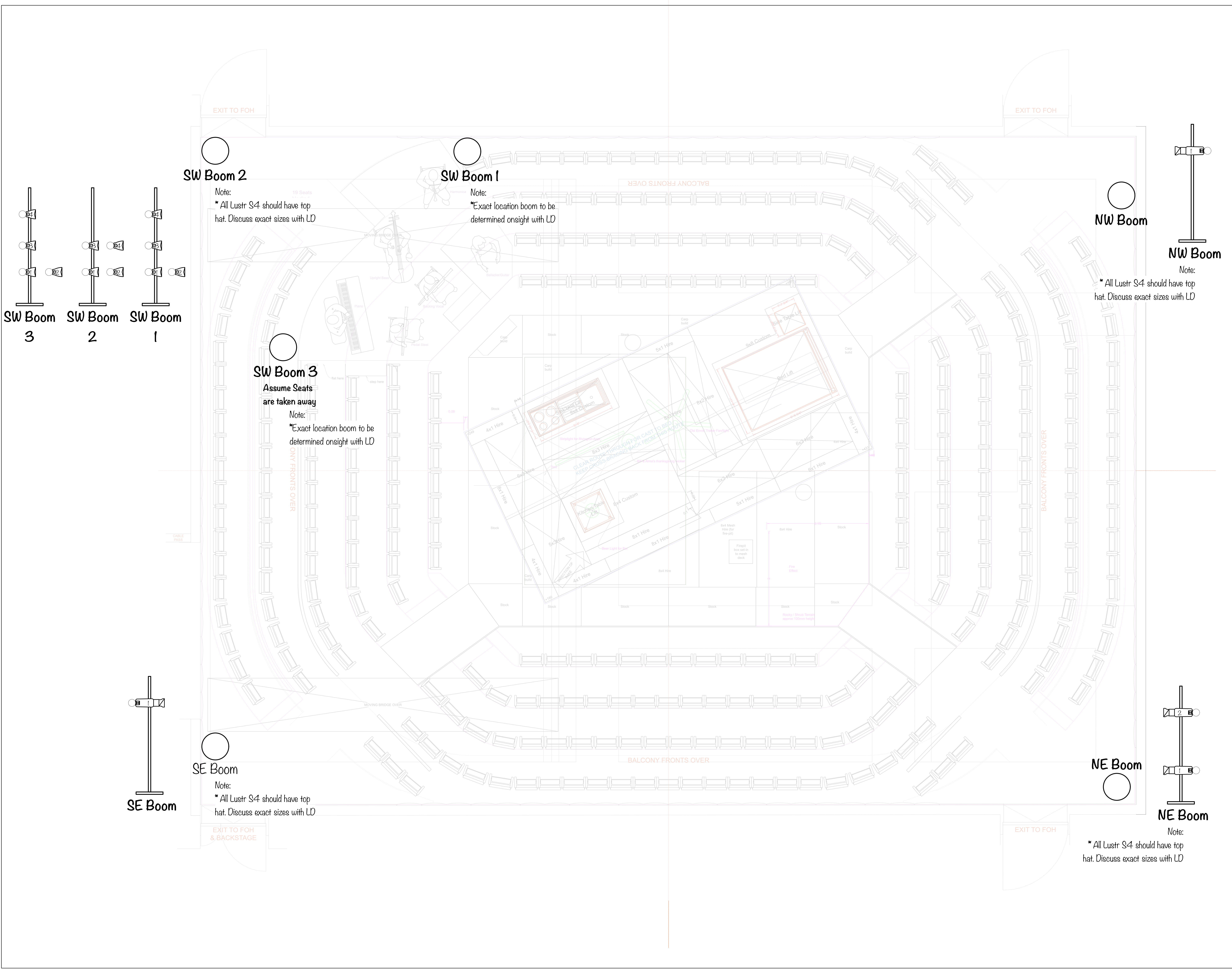
B	4/19/23	Final Light Plot
A	4/9/23	Preliminary Light Plot
NO.	Date	Revisions

Brokeback Mountain
 Ashley Robinson

Soho Place
 London, England
 May 2023

DIRECTION	Jonathan Butterell
SCENERY	Tom Dye
COSTUMES	Tom Dye
LIGHTING	David Finn
ASSOC. LD	Simon Bennison
PROD. MANAGER	Phil Wilding
PROD. ELECTRICIAN	Ian Mouldie
PRODUCER	Nimax Theatre Ltd.

Booms	
DRAWN BY: DF/CMP	Sheet No. 3
SCALE: 1:25.00	
ISSUE DATE: 4/19/23	



SW Boom 2

Note:
 * All Lustr S4 should have top hat. Discuss exact sizes with LD

SW Boom 1

Note:
 * Exact location boom to be determined onsite with LD

SW Boom 3

Assume Seats are taken away
 Note:
 * Exact location boom to be determined onsite with LD

NW Boom

Note:
 * All Lustr S4 should have top hat. Discuss exact sizes with LD


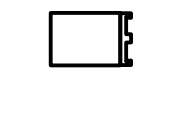
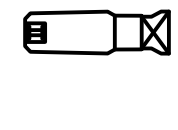
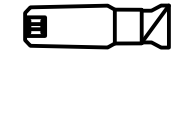
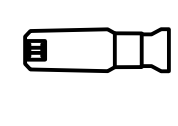
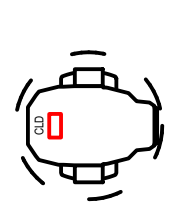
SE Boom

Note:
 * All Lustr S4 should have top hat. Discuss exact sizes with LD

NE Boom

Note:
 * All Lustr S4 should have top hat. Discuss exact sizes with LD

INSTRUMENT KEY

-  ETC ColorSource PAR CE Wide Round
-  ETC FOS4 FL7
-  ETC Source4 LED2LS 19deg
-  ETC Source4 LED2LS 26deg
-  ETC Source4 LED2LS 36deg
-  Martin MAC Encore Performance LD



NOTES

- * All Lustr S4 should have top hat. Discuss exact sizes with LD
- * There will be a minimal amount of gobos and custom gobos in Lustrs and Encores. LD to provide numbers and artwork ASAP

B	4/19/23	Final Light Plot
A	4/9/23	Preliminary Light Plot
NO.	Date	Revisions

Brokeback Mountain
Ashley Robinson

Soho Place
London, England
May 2023

DIRECTION: Jonathan Butterell
SCENERY: Tom Dye
COSTUMES: Tom Dye
LIGHTING: David Finn

ASSOC. LD: Simon Bennison
PROD. MANAGER: Phil Wilding
PROD. ELECTRICIAN: Ian Mouldie
PRODUCER: Nimax Theatre Ltd.

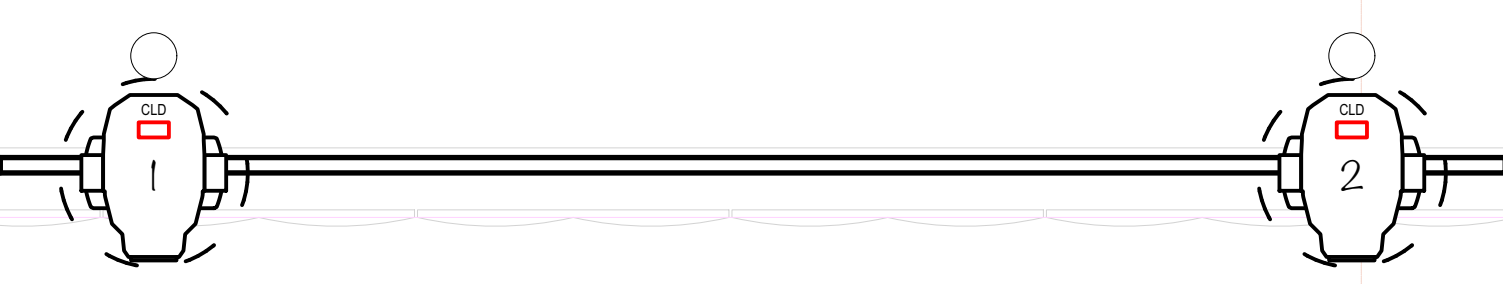
Truss Structures

DRAWN BY: DF/CMP	Sheet No.
SCALE: 1:25.00	4
ISSUE DATE: 4/19/23	

Practicals shown in Blue. Discuss all practicals with LD

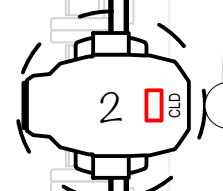
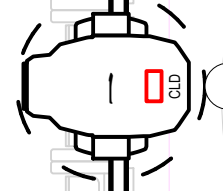
Note:
*Unit 2 is on Center Line
*Unit 1 is 4m off center

West Truss



EXIT TO FOH

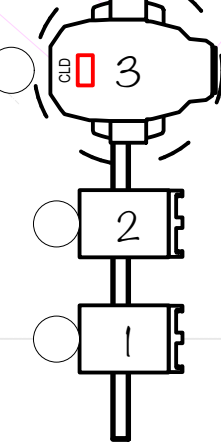
NW Catwalk Pipe



North Truss

Note:
*Truss length to fit between existing catwalk structures

NE Catwalk Pipe

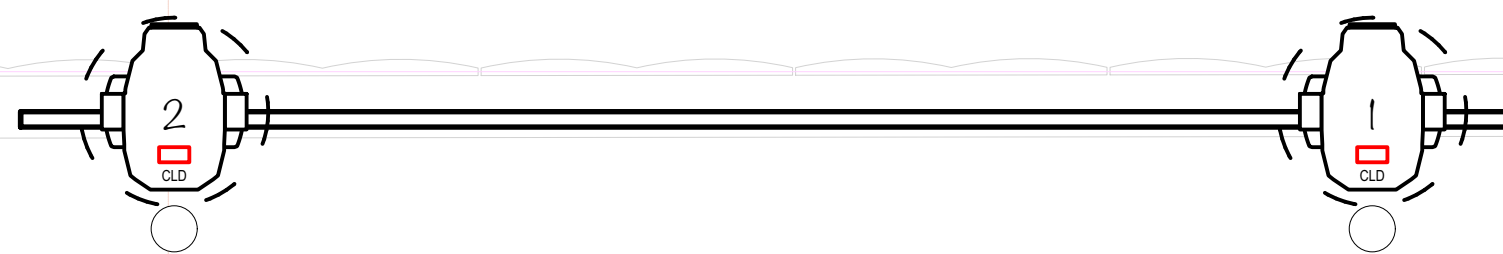


Note:
*Catwalk Pipe to mimic pipe span used in Medea

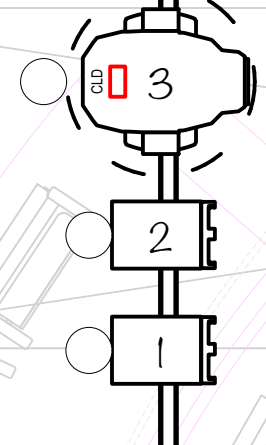
EXIT TO FOH

East Truss

Note:
*Unit 2 is on Center Line
*Unit 1 is 4m off center



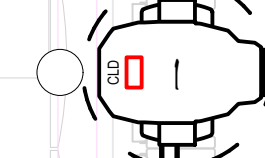
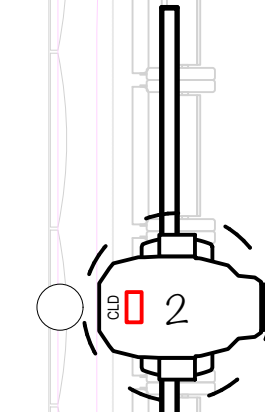
SW Catwalk Pipe



Note:
*Catwalk Pipe to mimic pipe span used in Medea

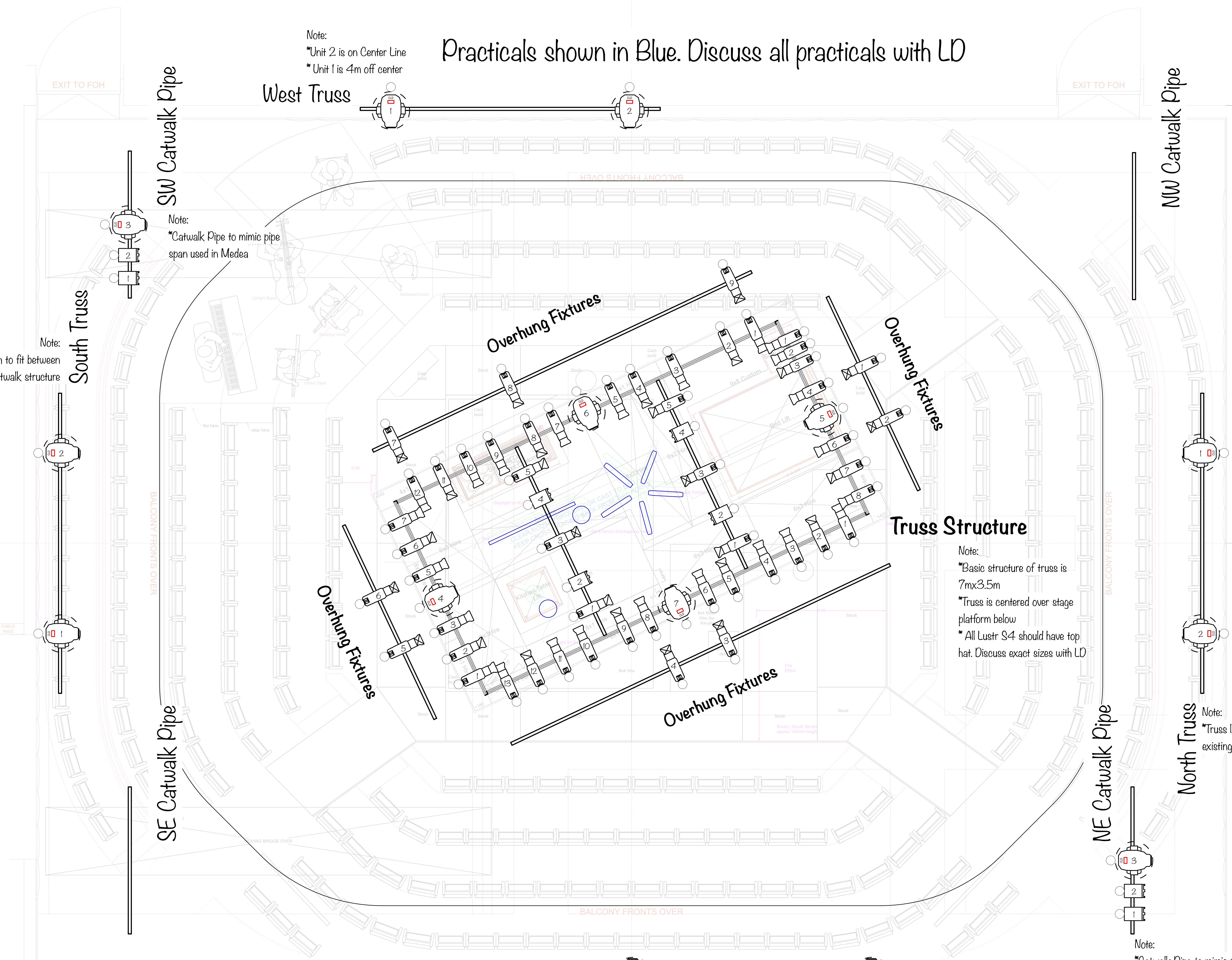
South Truss

Note:
*Truss length to fit between existing catwalk structure



SE Catwalk Pipe

EXIT TO FOH & BACKSTAGE



Overhung Fixtures

Overhung Fixtures

Overhung Fixtures

Overhung Fixtures

Truss Structure

Note:
*Basic structure of truss is 7mx3.5m
*Truss is centered over stage platform below
*All Lustr S4 should have top hat. Discuss exact sizes with LD

EXIT TO FOH

BALCONY FRONTS OVER

BALCONY FRONTS OVER

BALCONY FRONTS OVER

EXIT TO FOH & BACKSTAGE

EXIT TO FOH