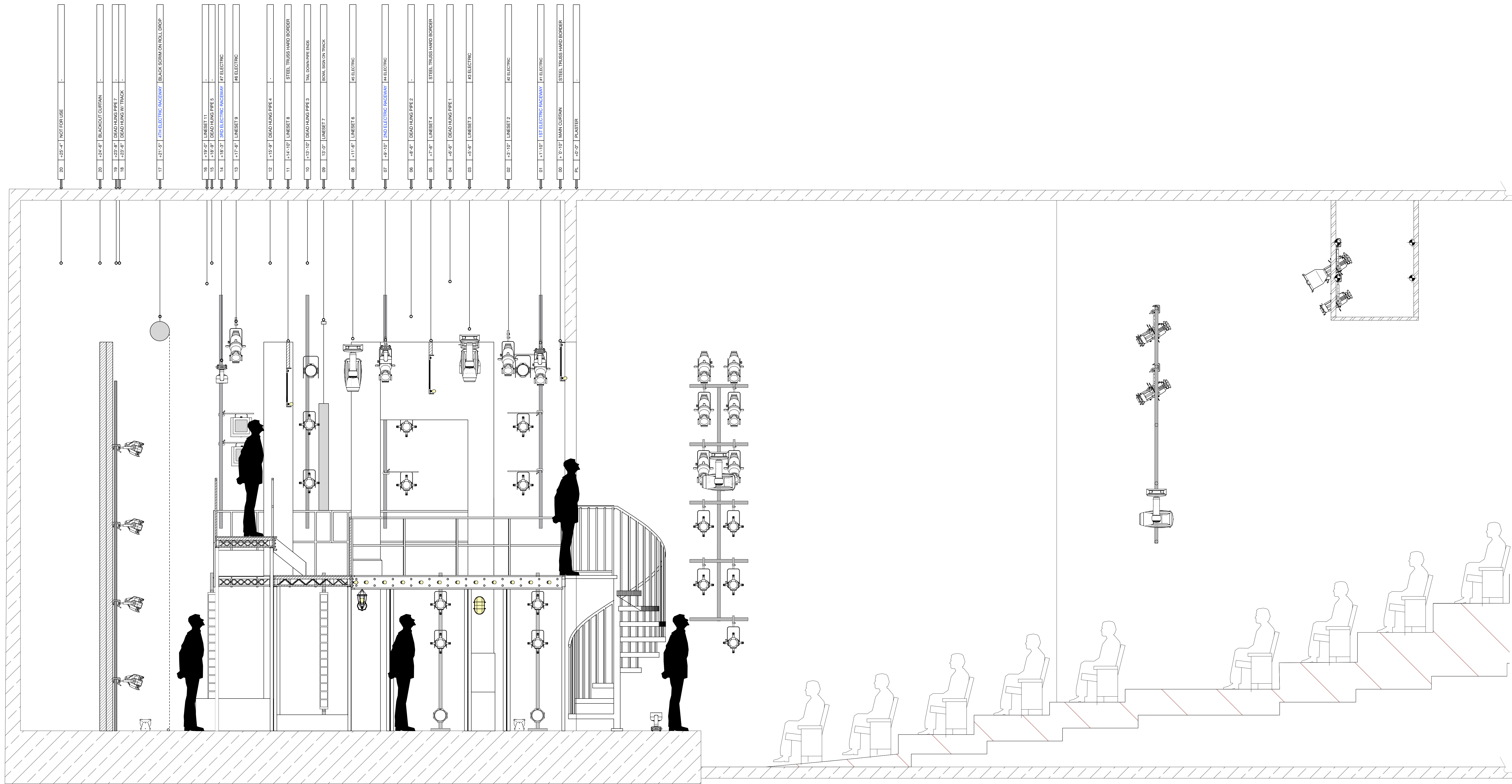


**KEY TO SYMBOLS:**

	ETC S4 10°	2
	ETC S4 19°	16
	ETC S4 26°	46
	ETC S4 36°	44
	ETC S4 50°	6
	ETC ColorSource Deep Blue 36°	6
	ETC ColorSource Deep Blue 50°	4
	S4 PAR WFL	30
	Wybron CXI	4
	Practical	16
	Elation Artiste Picasso	4
	Elation Satira Profile	6
	Martin Mac Aura	18
	Elation Platinum Seven	4

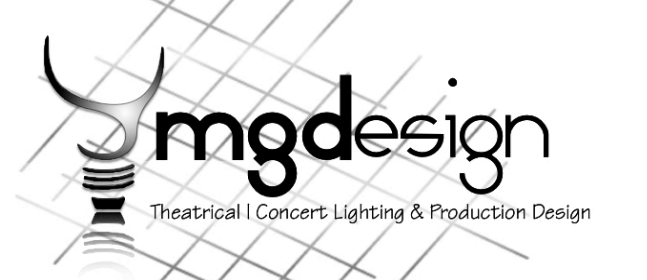
**LEGEND NOTATION:**

877774	Gobo
G847	Color
Scroller	→
Barrel Type	→
Channel #	→
25	Accessory
00	Unit #
22	Template



**NOTES:**

- ALL SPACING ON 1'-6" CENTERS UNLESS OTHERWISE NOTED.
- ALL DIMENSIONS ARE FROM CENTER LINE.
- ALL GEL FRAMES BLACK.
- ALL TEMPLATES A-SIZE IF POSSIBLE.
- PLEASE PROVIDE SPARE R119, R132, DONUTS BLACKWRAP, BLACKTAK, BARN DOORS, TOP HATS & HALF HATS AT FOCUS.
- ALL ELECTRIC TRIMS ARE FROM SHOW DECK TO BOTTOM OF PIPE.
- ALL BOOM & TAIL DOWN HEIGHTS ARE FROM BOTTOM OF PIPE TO CENTER OF C CLAMP.
- PLEASE HAVE ALL COLOR, TEMPLATES AND ACCESSORIES IN AND ON UNITS BEFORE FOCUS.
- PLEASE NOTE THE STRIPLIGHT, DECK MOUNT, AND HANGING DETAILS.
- ALL INSTRUMENTS TO BE SHAKEN NOT STIRRED.



THIS DRAWING REPRESENTS A LIGHTING DESIGN THAT IS WHOLLY OWNED BY MATTHEW GUMINSKI. ANY USE OR DISTRIBUTION OF THIS DRAWING OTHER THAN AS REQUIRED FOR PRODUCING THE FULL PRODUCTION OF BRING IT LIVE! IS EXPRESSLY PROHIBITED AND IS A VIOLATION OF COPYRIGHT LAWS IN THE US AND INTERNATIONAL. ANY REPRODUCTION OF THIS DRAWING OR USE WITHOUT THE WRITTEN ACTION OR BENEVOLENT OF THE DESIGNER, THE DRAWING, AND THE LIGHTING DESIGN ITSELF, IS ©2022 MATTHEW GUMINSKI. ALL RIGHTS RESERVED.

THIS DRAWING REPRESENTS VISUAL CONCEPTS AND DESIGN INTENTS. THE DESIGNER AND HIS ASSISTANTS ARE RESPONSIBLE FOR THE VISUAL ASPECTS OF THE PRODUCTION ONLY AND ALL SPECIFICATIONS CONTAINED HEREIN RELATE SOLELY TO THE VISUAL APPEARANCE OF THE LIGHTING AND NOT TO MATTERS OF ELECTRICAL OR STRUCTURAL SOUNDNESS AND/OR SAFETY. THIS DRAWING DOES NOT REPLACE THE KNOWLEDGE AND ADVICE OF A LICENSED STRUCTURAL ENGINEER. THE DESIGNER IS UNQUALIFIED TO DETERMINE THE STRUCTURAL APPROPRIATENESS OF THIS DESIGN AND WILL NOT ASSUME RESPONSIBILITY FOR IMPROPER ENGINEERING OR USE.

white plains performing arts center  
Presents  
**JERSEY BOYS**  
THE MUSICAL  
11 City Place 3rd Floor - White Plains, NY 10691

**(LP-5) 1/2" SECTION**

LD: Matthew Guminski  
19-19 24th Avenue, #L611  
Astoria NY, 11102  
Cell #: (978)835-3981  
E-Mail: matt@mglightingdesign.com  
www.mglightingdesign.com

Directed by: Antoinette DiPietropolo  
Date: 11/19/22 (Ver. 1) ME: Olivier Plamondon  
Scale: 1/2" = 1'-0" Set Design: C & J Swader