



**Josh Groban
Harmony Tour
Summer 2022**

LX Rigging w Hoists

DESIGN:
JEFF FARROW & AJ PEN
penlight

TOURING LD:
AMY EDGE

PRODUCTION MANAGER:
Jimmy Pettinato
jimmpet@mac.com

Atlanta Chastain Park
Sheet: AT-1

Symbol	Hoist Name	Qty
	Hoist 1 Ton Chain Master	19
	Hoist 1/2 Ton Chain Master	6

Truss Description	Qty
Truss CircleType B 32'2"	
OD 30 Deg	5
Type F 3'10	2
Type F 7'10	20

ANY SUBSTITUTION OF LIGHTING FIXTURE MUST BE APPROVED BY TOURING LIGHTING DIRECTOR.

ALL LIGHT SOURCES MUST BE HIGH-QUALITY LED. SUBSTITUTION FOR ARC LAMPS OR INFERIOR QUALITY FIXTURES WILL NOT BE APPROVED.

2 X FOH FOLLOWSPOT W/ INTERCOM
FRAME 1: L206 + L248
(1/4 CTO + 1/4 MINUSGREEN)
FRAME 2: R26 (LIGHT RED)
FRAME 3: R81 (URBAN BLUE)

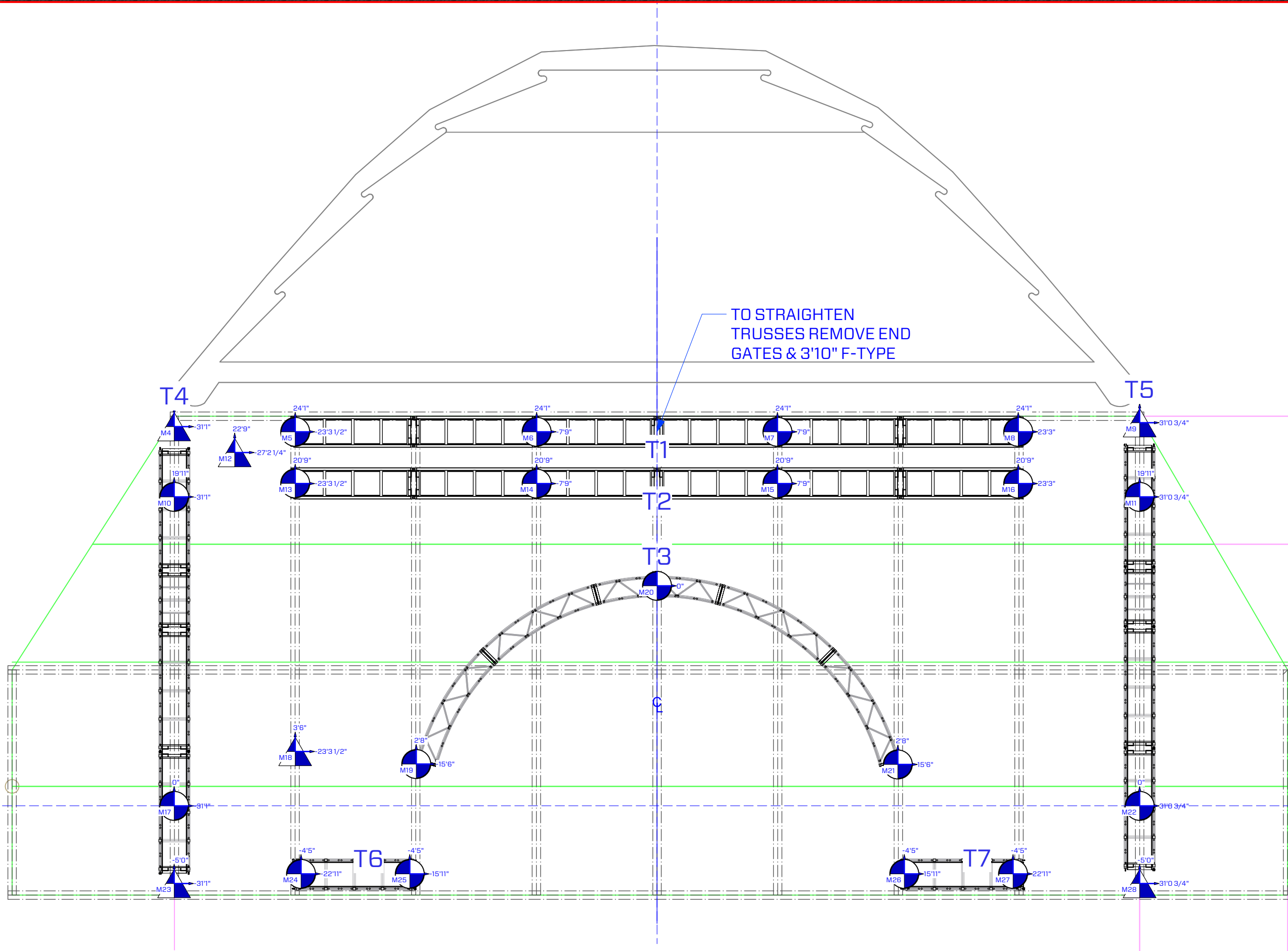
GRANDMA2 FULL SIZE
SOFTWARE V.3.9.60.28

THIS DRAWING AND ALL ACCOMPANYING SPECIFICATIONS ARE PROPERTY OF PENLIGHT INC. ANY REPRODUCTION OR PUBLIC EXHIBITION CAN ONLY BE AUTHORIZED BY PERSONS NAMED HEREIN.

THIS DRAWING IS AN ILLUSTRATION OF DESIGN CONCEPTS ONLY. ALTHOUGH DIMENSIONS ARE ACCURATE AND PROPORTIONALLY TO SCALE, THE DESIGNER MAKES NO CLAIM THAT THE PHYSICAL CONSTRUCTION OF THIS DESIGN IS PLAUSIBLE FROM AN ENGINEERING STANDPOINT. VENDORS ARE TO VERIFY THE SAFETY OF ALL FABRICATIONS AND IMPLEMENTATION OF THIS DESIGN AND ARE TO CONSULT WITH A REGISTERED ENGINEER WHERE APPLICABLE.

ALL VENDORS TO COMPLY WITH SAFETY STANDARDS ESTABLISHED BY LOCAL AUTHORITIES IN ALL VENUES WHERE STAGE, SET OR LIGHTING APPARATUS INSPIRED BY THIS DESIGN ARE INSTALLED.

2022-06-16 / 5:08:31 PM



POSITION OF CURVED TRUSS REMAINS THE SAME
SIDE TRUSSES MOVE OFFSTAGE TO PREVENT BRIDAL
FOH TRUSSES SHIFTS ONSTAGE TO PREVENT BRIDAL
HOISTS ON T1 & T2 SHIFT TO BE DIRECTLY INLINE WITH BEAM TO PREVENT BRIDAL

(8) EQ SPA = 62'-1 5/8"

82'-1 1/4" VIF

9'-6 1/4"



**Josh Groban
Harmony Tour
Summer 2022**

LX Rigging Elevation

DESIGN:
JEFF FARROW & AJ PEN
penlight

TOURING LD:
AMY EDGE

PRODUCTION MANAGER:
Jimmy Pettinato
jimmpet@mac.com

Atlanta Chastain Park
Sheet: AT-2

Symbol	Hoist Name	Qty
	Hoist 1 Ton Chain Master	19
	Hoist 1/2 Ton Chain Master	6

Truss Description	Qty
Truss CircleType B 32'2"	
OD 30 Deg	5
Type F 3'10	2
Type F 7'10	20

ANY SUBSTITUTION OF LIGHTING FIXTURE MUST BE APPROVED BY TOURING LIGHTING DIRECTOR.

ALL LIGHT SOURCES MUST BE HIGH-QUALITY LED. SUBSTITUTION FOR ARC LAMPS OR INFERIOR QUALITY FIXTURES WILL NOT BE APPROVED.

2 X FOH FOLLOWSPOT W/ INTERCOM
FRAME 1: L206 + L248
(1/4 CTO + 1/4 MINUSGREEN)
FRAME 2: R26 (LIGHT RED)
FRAME 3: R81 (URBAN BLUE)

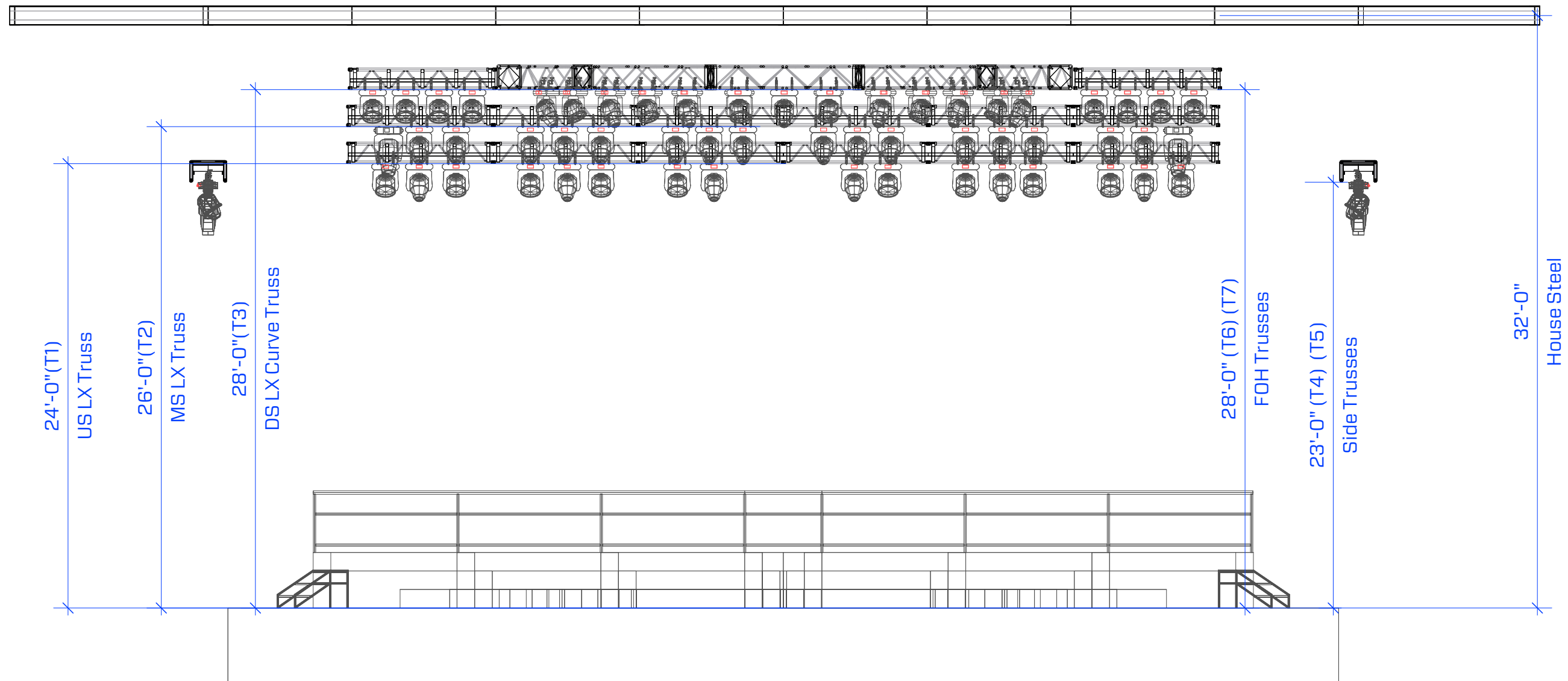
GRANDMA2 FULL SIZE
SOFTWARE V.3.9.60.28

THIS DRAWING AND ALL ACCOMPANYING SPECIFICATIONS ARE PROPERTY OF PENLIGHT INC. ANY REPRODUCTION OR PUBLIC EXHIBITION CAN ONLY BE AUTHORIZED BY PERSONS NAMED HEREIN.

THIS DRAWING IS AN ILLUSTRATION OF DESIGN CONCEPTS ONLY. ALTHOUGH DIMENSIONS ARE ACCURATE AND PROPORTIONALLY TO SCALE, THE DESIGNER MAKES NO CLAIM THAT THE PHYSICAL CONSTRUCTION OF THIS DESIGN IS PLAUSIBLE FROM AN ENGINEERING STANDPOINT. VENDORS ARE TO VERIFY THE SAFETY OF ALL FABRICATIONS AND IMPLEMENTATION OF THIS DESIGN AND ARE TO CONSULT WITH A REGISTERED ENGINEER WHERE APPLICABLE.

ALL VENDORS TO COMPLY WITH SAFETY STANDARDS ESTABLISHED BY LOCAL AUTHORITIES IN ALL VENUES WHERE STAGE, SET OR LIGHTING APPARATUS INSPIRED BY THIS DESIGN ARE INSTALLED.

2022-06-16 / 5:08:33 PM





**Josh Groban
Harmony Tour
Summer 2022**

Risers
 DESIGN: JEFF FARROW & AJ PEN penlight
 TOURING LD: AMY EDGE
 PRODUCTION MANAGER: Jimmy Pettinato jimmpet@mac.com

**Atlanta Chastain Park
Sheet: AT-3**

Symbol	Hoist Name	Qty
	Hoist 1 Ton Chain Master	19
	Hoist 1/2 Ton Chain Master	6

Truss Description	Qty
Truss CircleType B 32'2"	5
OD 30 Deg	2
Type F 3'10	20

ANY SUBSTITUTION OF LIGHTING FIXTURE MUST BE APPROVED BY TOURING LIGHTING DIRECTOR.

ALL LIGHT SOURCES MUST BE HIGH-QUALITY LED. SUBSTITUTION FOR ARC LAMPS OR INFERIOR QUALITY FIXTURES WILL NOT BE APPROVED.

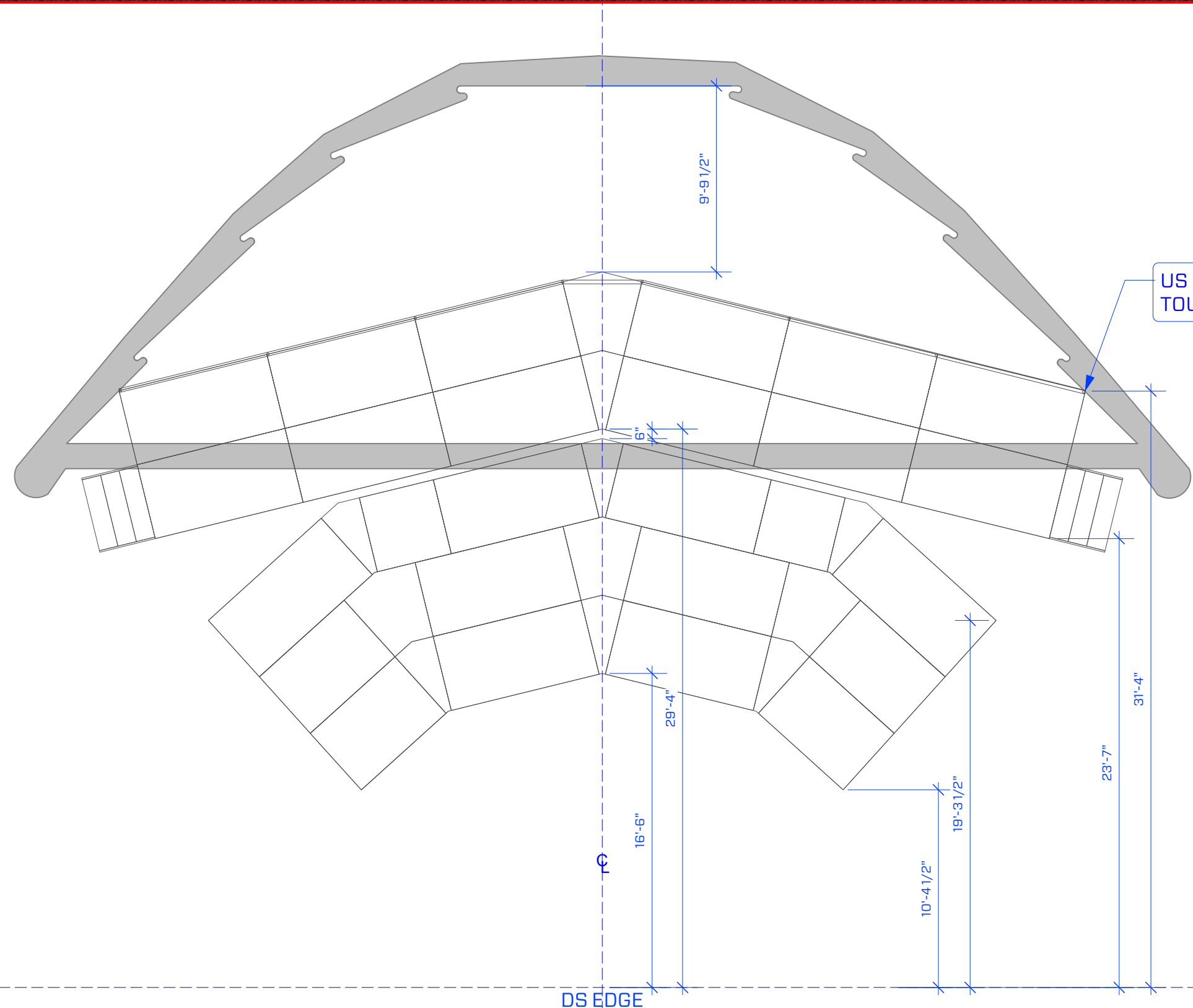
2 X FOH FOLLOWSPOT W/ INTERCOM
 FRAME 1: L206 + L248 (1/4 CTO + 1/4 MINUSGREEN)
 FRAME 2: R26 (LIGHT RED)
 FRAME 3: R81 (URBAN BLUE)

GRANDMA2 FULL SIZE SOFTWARE V.3.9.60.28

THIS DRAWING AND ALL ACCOMPANYING SPECIFICATIONS ARE PROPERTY OF PENLIGHT INC. ANY REPRODUCTION OR PUBLIC EXHIBITION CAN ONLY BE AUTHORIZED BY PERSONS NAMED HEREIN.
 THIS DRAWING IS AN ILLUSTRATION OF DESIGN CONCEPTS ONLY. ALTHOUGH DIMENSIONS ARE ACCURATE AND PROPORTIONALLY TO SCALE, THE DESIGNER MAKES NO CLAIM THAT THE PHYSICAL CONSTRUCTION OF THIS DESIGN IS PLAUSIBLE FROM AN ENGINEERING STANDPOINT. VENDORS ARE TO VERIFY THE SAFETY OF ALL FABRICATIONS AND IMPLEMENTATION OF THIS DESIGN AND ARE TO CONSULT WITH A REGISTERED ENGINEER WHERE APPLICABLE.

ALL VENDORS TO COMPLY WITH SAFETY STANDARDS ESTABLISHED BY LOCAL AUTHORITIES IN ALL VENUES WHERE STAGE, SET OR LIGHTING APPARATUS INSPIRED BY THIS DESIGN ARE INSTALLED.

2022-06-16 / 5:08:35 PM



US RISER HANDRAILING TOUCHES WALL

DS EDGE



**Josh Groban
Harmony Tour
Summer 2022**

LX Overhead
 DESIGN:
 JEFF FARROW & AJ PEN
 penlight
 TOURING LD:
 AMY EDGE
 PRODUCTION MANAGER:
 Jimmy Pettinato
 jimmpet@mac.com

**Atlanta Chastain Park
Sheet: AT-4**

LIGHTING FIXTURES

	MAC Quantum Profile	45
	MAC Quantum Wash	48
	Robe BMFL Followspot	2
	Colorforce II 72	24
	Hazer	2
	Fan	2

ANY SUBSTITUTION OF LIGHTING FIXTURE MUST BE APPROVED BY TOURING LIGHTING DIRECTOR.

ALL LIGHT SOURCES MUST BE HIGH-QUALITY LED. SUBSTITUTION FOR ARC LAMPS OR INFERIOR QUALITY FIXTURES WILL NOT BE APPROVED.

2 X FOH FOLLOWSPOT W/ INTERCOM
 FRAME 1: L206 + L248
 (1/4 CTO + 1/4 MINUSGREEN)
 FRAME 2: R26 (LIGHT RED)
 FRAME 3: R81 (URBAN BLUE)

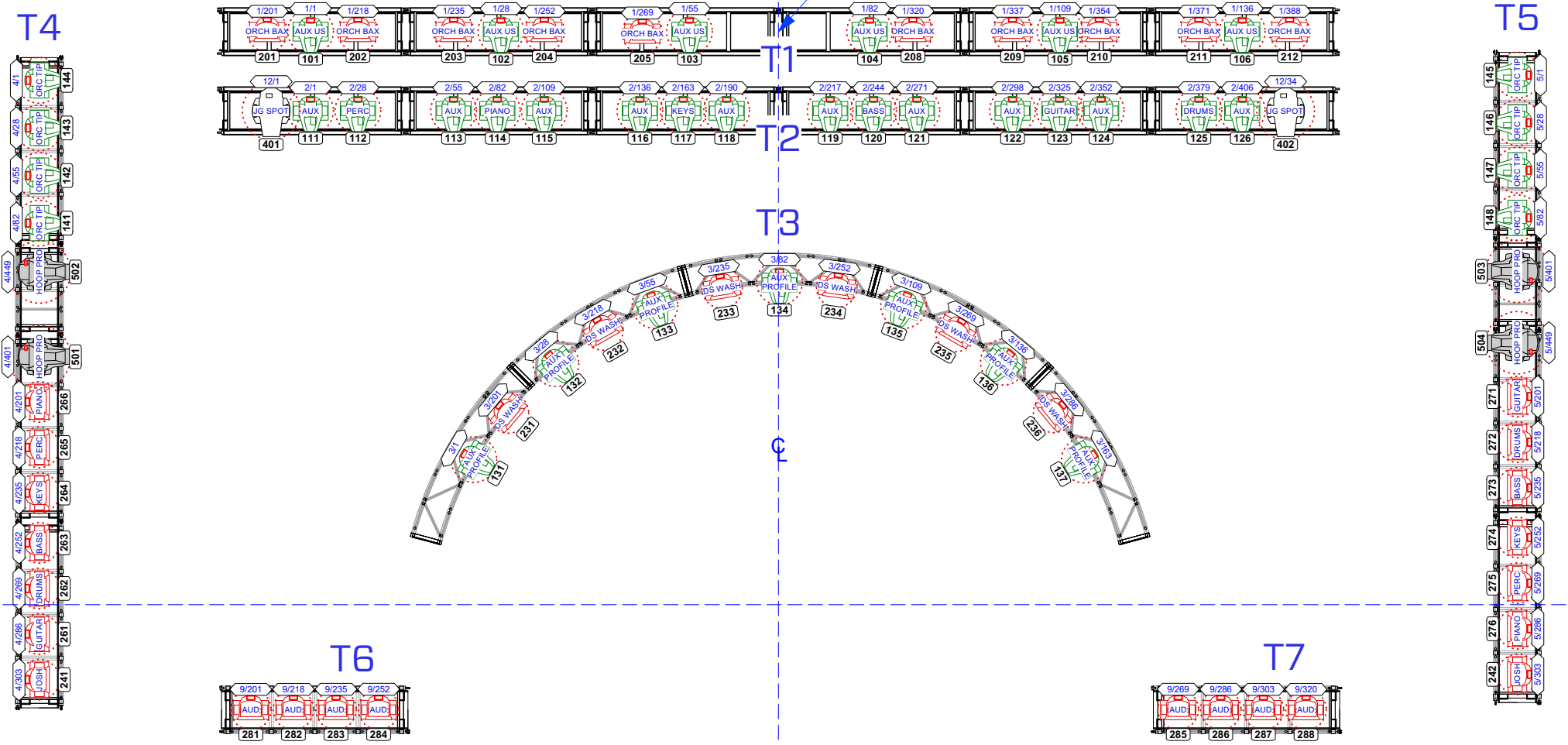
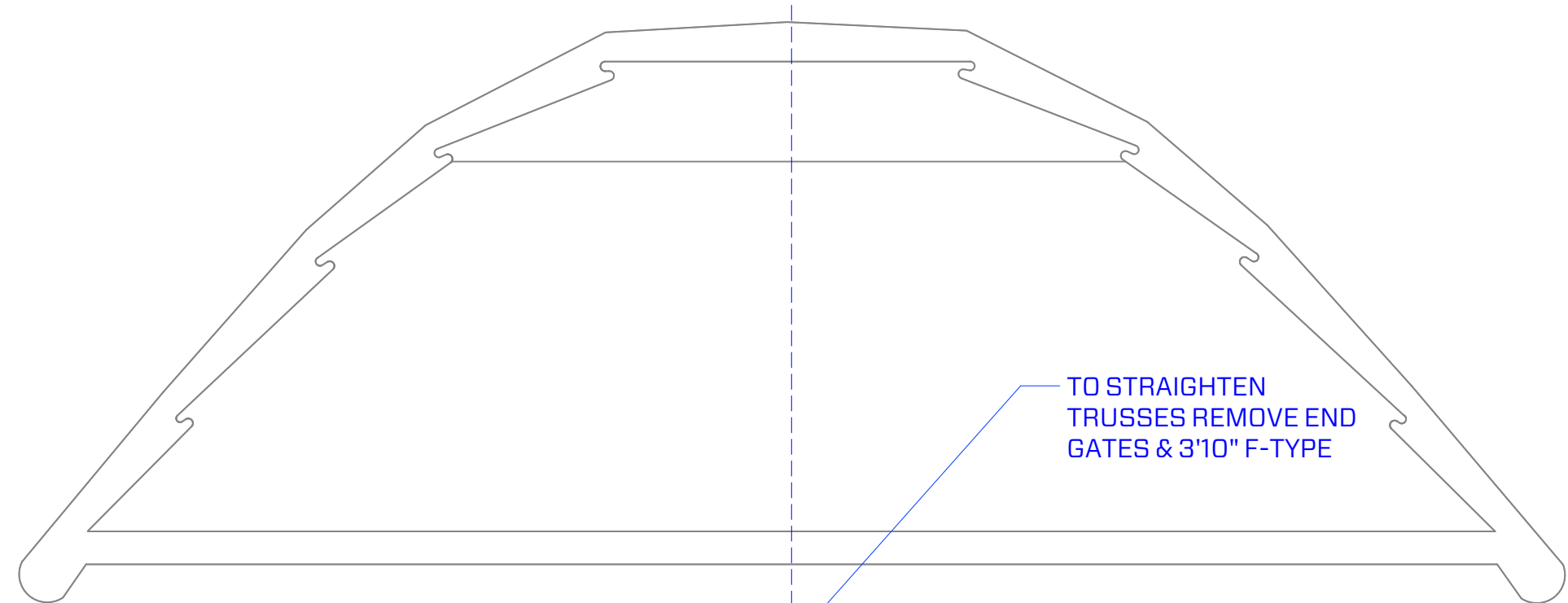
GRANDMA2 FULL SIZE
 SOFTWARE V.3.9.60.28

THIS DRAWING AND ALL ACCOMPANYING SPECIFICATIONS ARE PROPERTY OF PENLIGHT INC. ANY REPRODUCTION OR PUBLIC EXHIBITION CAN ONLY BE AUTHORIZED BY PERSONS NAMED HEREIN.

THIS DRAWING IS AN ILLUSTRATION OF DESIGN CONCEPTS ONLY. ALTHOUGH DIMENSIONS ARE ACCURATE AND PROPORTIONALLY TO SCALE, THE DESIGNER MAKES NO CLAIM THAT THE PHYSICAL CONSTRUCTION OF THIS DESIGN IS PLAUSIBLE FROM AN ENGINEERING STANDPOINT. VENDORS ARE TO VERIFY THE SAFETY OF ALL FABRICATIONS AND IMPLEMENTATION OF THIS DESIGN AND ARE TO CONSULT WITH A REGISTERED ENGINEER WHERE APPLICABLE.

ALL VENDORS TO COMPLY WITH SAFETY STANDARDS ESTABLISHED BY LOCAL AUTHORITIES IN ALL VENUES WHERE STAGE, SET OR LIGHTING APPARATUS INSPIRED BY THIS DESIGN ARE INSTALLED.

2022-06-16 / 5:08:37 PM



POSITION OF CURVED TRUSS REMAINS THE SAME
 SIDE TRUSSES MOVE OFFSTAGE TO PREVENT BRIDAL
 FOH TRUSSES SHIFTS ONSTAGE TO PREVENT BRIDAL
 HOISTS ON T1 & T2 SHIFT TO BE DIRECTLY INLINE WITH BEAM TO PREVENT BRIDAL



**Josh Groban
Harmony Tour
Summer 2022**

LX Floor
 DESIGN:
 JEFF FARROW & AJ PEN
 penlight
 TOURING LD:
 AMY EDGE
 PRODUCTION MANAGER:
 Jimmy Pettinato
 jimmpet@mac.com

**Atlanta Chastain Park
Sheet: AT-5**

LIGHTING FIXTURES

	MAC Quantum Profile	45
	MAC Quantum Wash	48
	Robe BMFL Followspot	2
	Colorforce II 72	24
	Hazer	2
	Fan	2

ANY SUBSTITUTION OF LIGHTING FIXTURE MUST BE APPROVED BY TOURING LIGHTING DIRECTOR.

ALL LIGHT SOURCES MUST BE HIGH-QUALITY LED. SUBSTITUTION FOR ARC LAMPS OR INFERIOR QUALITY FIXTURES WILL NOT BE APPROVED.

2 X FOH FOLLOWSPOT W/ INTERCOM
 FRAME 1: L206 + L248
 (1/4 CTO + 1/4 MINUSGREEN)
 FRAME 2: R26 (LIGHT RED)
 FRAME 3: R81 (URBAN BLUE)

GRANDMA2 FULL SIZE
 SOFTWARE V.3.9.60.28

THIS DRAWING AND ALL ACCOMPANYING SPECIFICATIONS ARE PROPERTY OF PENLIGHT INC. ANY REPRODUCTION OR PUBLIC EXHIBITION CAN ONLY BE AUTHORIZED BY PERSONS NAMED HEREIN.

THIS DRAWING IS AN ILLUSTRATION OF DESIGN CONCEPTS ONLY. ALTHOUGH DIMENSIONS ARE ACCURATE AND PROPORTIONALLY TO SCALE, THE DESIGNER MAKES NO CLAIM THAT THE PHYSICAL CONSTRUCTION OF THIS DESIGN IS PLAUSIBLE FROM AN ENGINEERING STANDPOINT. VENDORS ARE TO VERIFY THE SAFETY OF ALL FABRICATIONS AND IMPLEMENTATION OF THIS DESIGN AND ARE TO CONSULT WITH A REGISTERED ENGINEER WHERE APPLICABLE.

ALL VENDORS TO COMPLY WITH SAFETY STANDARDS ESTABLISHED BY LOCAL AUTHORITIES IN ALL VENUES WHERE STAGE, SET OR LIGHTING APPARATUS INSPIRED BY THIS DESIGN ARE INSTALLED.

2022-06-16 / 5:08:38 PM

