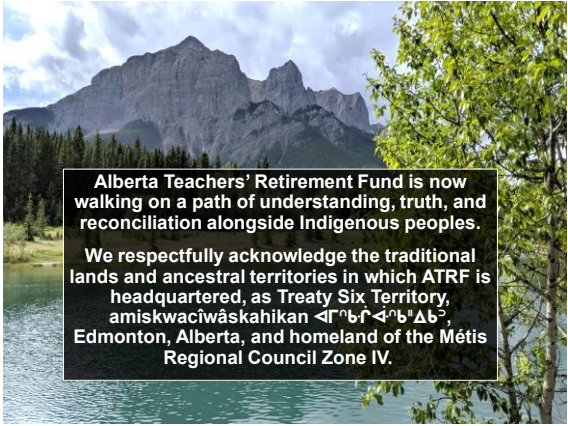
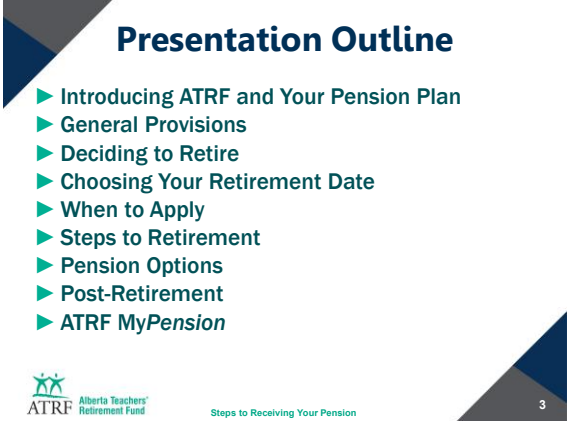




1



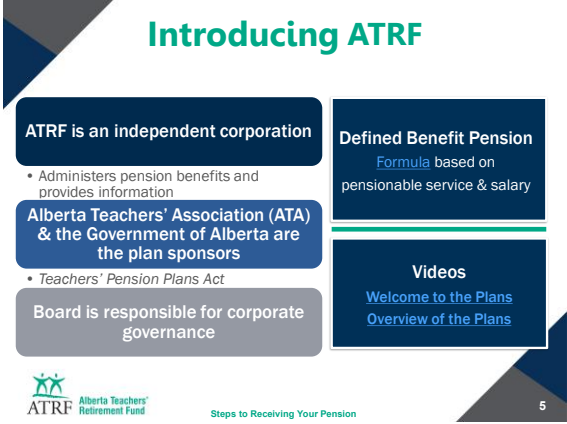
2



3



4



5



6

Did You Know?

Your Pension is:

Considered family property in a **relationship breakdown**

Not assignable as collateral

Not subject to seizure in bankruptcy

Subject to tax authority and maintenance enforcement orders

Steps to Receiving Your Pension 7

7

Start of Pension

Your pension can start the first of the month following the latest of:

- Your 55th birthday
- Termination of your last ATRF teaching contract
- Last accrual of pensionable service with ATRF
- Date when your last substitute service was purchased

Your pension must start no later than January 1 after the year in which you turn age 71, even if you are still working.

Steps to Receiving Your Pension 8

8

Purchasing Service

- ▶ **Active/Inactive/Disabled members**
 - Substitute service in Alberta
- ▶ **Active and Disabled Members**
 - Employer-approved leaves
 - Previously refunded service
 - Reciprocal transfer shortage
 - Independent school service

Steps to Receiving Your Pension 9

9

Transferring Service

Combining service under one plan may provide you with a higher pension

Steps to Receiving Your Pension 10

10

Reciprocal Transfer Agreements

Service transfer applications:

Teachers' Pension Plan Authorities

Alberta Public Sector Pension Plans

Government of Canada Public Service Pension Plan

Local Authorities Pension Plan (LAPP)

Public Service Pension Plan (PSPP)

Management Employees Pension Plan (MEPP)

1-year time limit for Alberta Public Sector and Canada Public Service

Steps to Receiving Your Pension 11

11

Service While Disabled

Short-term disability is a period of paid leave

- ▶ Credited with service and salary as though were continuing to work

Extended disability service accrual

- ▶ For extended disability on or after September 1, 1992
- ▶ ATRF will credit pensionable service and salary
- ▶ Individual contributions are not required
- ▶ Same rate of service and salary prior to disability

Steps to Receiving Your Pension 12

12



13

Deciding to Retire

Make your decision based on your:

- Age
- Retirement/transition incentives
- Health
- Income needs
- Job satisfaction
- Future plans

Alberta Teachers' Retirement Fund Steps to Receiving Your Pension 14

14

Choosing Your Retirement Date

Resignation/Termination date

If you are a 10-month employee (non-Central Office)

- The effective date of your resignation at the end of a school year is usually June 30
- Your pension starts July 1

If you are a 12-month employee (Central Office)

- The effective date of your resignation at the end of a school year is usually August 31
- Your pension starts September 1

Tax Rules:

Pension must begin by December 31 of the year you turn age 71

Resign at end of month, not beginning of month

Alberta Teachers' Retirement Fund Steps to Receiving Your Pension 15

15

When to Apply

To receive your first scheduled payment on time, apply **3 months** before your pension start date!

Late applications = delayed payments

You can cancel your pension application at any time prior to your first pension payment

Before any new teaching contract begins

Potential pension processing delays

- Purchasing service
- Transferring service from another pension plan
- Family Property Order that divides your pension with a former pension partner

Alberta Teachers' Retirement Fund Steps to Receiving Your Pension 16

16



17

Steps to Retirement Checklist

1. Submit your resignation/retirement notification to your employer
2. Apply to ATRF for your pension: [MyPension](#) or [Pension Application](#)
3. Wait for your Pension Options Package
4. Complete forms in your Pension Options Package
5. Receive your pension payment

Alberta Teachers' Retirement Fund Steps to Receiving Your Pension 18

18

ATRF Steps to Receiving Your Pension

Step 1: Submit Your Resignation

- Resign before you apply for your pension
 - Minimum 30 days notice
 - Submitted directly to your employer
- Receiving extended disability benefits
 - Obtain a letter confirming the date your benefits will terminate

Questions about timing or wording of your resignation letter:

- Contact your employer's Human Resources personnel
- Contact Alberta Teachers' Association: Teacher Employment Services



Steps to Receiving Your Pension 19

19

Step 2: Apply for Your Pension

Submit electronic Pension Application in MyPension [MYPENSION >](#)

OR

Complete and return paper Pension Application to ATRF




Steps to Receiving Your Pension 20


20

MyPension

Member Menu: Pension Estimate, Plan Member Statements, Contribution and Service Statement, Termination Benefit Estimate, Service Purchase Estimate - Select type of service, **Apply Online - Select type of application**, Upload Documents to ATRF

Secure Message Centre: Upload Documents to ATRF

- Personal Contact Information
- Pension Partner Information
- Beneficiary Information
- Account Settings
- Communication Preferences
- MyAppointment
- Register for a Webinar



21

21

MyPension Pension Application

Pension Partner Status

Applications to purchase, transfer or access pensionable service must, in most cases, be made before your contract has terminated.

Do you require further information or applications for any of the following?

- Accounting service for any period after August 1992, during which you received Extended Disability Benefit insurance: YES NO
- Purchasing a period of disability that occurred prior to September 1992: YES NO
- Purchasing substitute service that was provided in Alberta since May 1971: YES NO
- Purchasing a leave of absence that was granted by your employer: YES NO
- Purchasing previously refunded service: YES NO
- Transferring service from another teacher pension plan in Canada: YES NO


My contract with: [Name of your last ATRF Employer]

will terminate/terminated effective: [Date]

Apply Online - Select type of application

I have read the requirements and information provided to me and by submitting this form I have authorized ATRF to begin processing my Pension.

[Print Submit Form to ATRF](#)



22

22

MyPension Pension Application

Pension Partner Status

Applications to purchase, transfer or access pensionable service must, in most cases, be made before your contract has terminated.

Do you require further information or applications for any of the following?

- Accounting service for any period after August 1992, during which you received Extended Disability Benefit insurance: YES NO
- Purchasing a period of disability that occurred prior to September 1992: YES NO
- Purchasing substitute service that was provided in Alberta since May 1971: YES NO
- Purchasing a leave of absence that was granted by your employer: YES NO
- Purchasing previously refunded service: YES NO
- Transferring service from another teacher pension plan in Canada: YES NO


My contract with: [Name of your last ATRF Employer]

will terminate/terminated effective: [Date]

Apply Online - Select type of application

I have read the requirements and information provided to me and by submitting this form I have authorized ATRF to begin processing my Pension.

[Print Submit Form to ATRF](#)



23

23

Step 2: Apply for Your Pension Supporting Documents

Secure Message Centre Upload Documents to ATRF

- Your proof of age document
- Pension partner's proof of age document (if applicable)
- Acceptable proof of age documents:
 - Driver's license
 - Passport
 - Birth certificate
 - Citizenship papers

Upload to ATRF via MyPension:



Steps to Receiving Your Pension 24

24

Step 2: Apply for Your Pension

Additional Applications

- Service purchase application
- Disability service accrual application
- Reciprocal transfer agreement application

ATRF Alberta Teachers' Retirement Fund Steps to Receiving Your Pension 25

25

Step 3: Wait for Pension Options Package

ATRF reviews your application

- ATRF will contact your employer to obtain confirmation of your contract termination date and service/salary details
- ATRF will calculate your pension after all information received

Waiting for your Pension Options Package

- Arrange your extended health benefits coverage
- Think about the pension option you will select

ATRF Alberta Teachers' Retirement Fund Steps to Receiving Your Pension 26

26

Step 4: Complete Pension Options Package

Your Pension Options Package

- Received electronically in MyPension if you applied online
- Received by mail or email if submitted a paper application

Statements for you to review and keep

- Pension Option Choices Statement
- Contribution and Service Statement

ATRF Alberta Teachers' Retirement Fund Steps to Receiving Your Pension 27

27

Step 4: Complete Pension Options Package

Forms for you to complete and return to ATRF

- Pension Election:
 - Indicate your pension option
 - Direct deposit information
- Federal Personal Tax Credits Return
- Provincial Personal Tax Credits Return
- Pension Partner's Waiver of Pension at Pension Commencement (if applicable)

ATRF Alberta Teachers' Retirement Fund Steps to Receiving Your Pension 28

28

Step 4: Complete Pension Options Package

Check before you submit in MyPension...

- Properly entered direct deposit information
- Beneficiary information complete and up-to-date (if applicable)

Check before you return your paper forms...

- Forms are signed
- You have attached a void cheque or direct deposit form
- Completed and signed both Personal Tax Credit forms

ATRF Alberta Teachers' Retirement Fund Steps to Receiving Your Pension 29

29

Step 5: Receive Your Pension Payment

Receipt of documents

- Acknowledgement of receipt of documents

Pension acknowledgement package

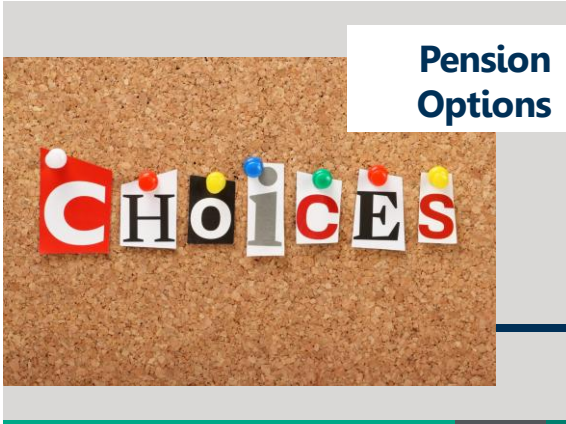
- Acknowledgement letter – confirm option selected and income tax deducted
- Retired Member Questionnaire

Deposit Dates

- 3rd last banking day of each month
- Only income tax deducted

ATRF Alberta Teachers' Retirement Fund Steps to Receiving Your Pension 30

30



31

Pension Options

There are currently seven pension options

- Three Joint and Survivor Options
- Four Single Life Options

Only you can decide which pension option is the right one for you!

- ❖ Considerations: Your age and/or your pension partner's age, health, lifestyle, future plans, dependents, family, financial situation, income needs, other sources of income, etc.

[Pension Option Selection Tool](#)
Things to consider when choosing your pension option

32

Joint and Survivor Pension Options

Paid for your lifetime and your pension partner's lifetime

Must choose joint option with pension partner as your nominee
Unless a pension waiver is signed

Nominee may not be changed after pension commencement
Even for death, separation, or divorce

Alberta Teachers' Retirement Fund
Steps to Receiving Your Pension
33

33

Joint and Survivor Pension Options

- Guarantee begins when pension commences
- Guaranteed for 60 monthly pension payments
- Beneficiaries can be changed at any time during the guarantee period

If you die before the end of the chosen guarantee period, the pension will continue in the same amount to your named beneficiary(ies) or estate until the end of the guarantee period

Alberta Teachers' Retirement Fund
Steps to Receiving Your Pension
34

34

Joint and Survivor Pension Options

Paid for your lifetime and your pension partner's lifetime

Pension Option	Pension Partner dies first, Member receives	Member dies first, Pension Partner receives
Joint Equal	100 %	100 %
Joint Reducible by 1/3	66 ² / ₃ %	66 ² / ₃ %
Joint 100/60	100 %	60 %

Alberta Teachers' Retirement Fund
Steps to Receiving Your Pension
35

35

Single Life Pension Options

Paid for your lifetime or to your beneficiary until the end of the guarantee period, whichever is longer

- Life only – no guarantee period
- Guaranteed 5 years (Normal Form)
- Guaranteed 10 years
- Guaranteed 15 years

Alberta Teachers' Retirement Fund
Steps to Receiving Your Pension
36

36

Single Life Pension Options

- Guarantee begins when pension commences
- Beneficiaries can be changed at any time during the guarantee period
- Please keep your designated beneficiaries up to date

If you die before the end of the chosen guarantee period, the pension will continue in the same amount to your named beneficiary(ies) or estate until the end of the guarantee period



Steps to Receiving Your Pension

Advance & Reduction Option

- Advance is an optional payment for pensions that start prior to age 64
- The Advance is paid monthly for your lifetime in addition to your teachers' pension
- Lifetime Permanent Reduction to your teachers' pension begins at age 65
- Cost neutral to the Plan



Steps to Receiving Your Pension

Advance & Reduction Option

- The total amount of pension paid over your lifetime may not be the same as if you had chosen your pension without the Advance & Reduction Option
- The total amount of pension payments paid over your lifetime is unique to you, and is affected by how long you live
- This option cannot be changed or cancelled once pension payments begin
- The Advance & Reduction option stops at your death



Steps to Receiving Your Pension

Post-Retirement



Cost-of-Living Adjustment

Alberta consumer Price Index (ACPI)
Measures the average cost of a basket of goods and services purchased by Alberta consumers over 12 months

Effective every January	Service to Dec 31, 1992: 60% of change to ACPI	Service from Jan 1, 1993: 70% of change to ACPI
-------------------------	---	--



Steps to Receiving Your Pension

Employment after Retirement

ATRF retired members can be employed for up to 0.6 of a school year under a teaching contract with an ATRF employer without affecting your pension



When 0.6 limit is reached, monthly pension payment reduced dollar-for-dollar by amount of monthly salary you earn

Inform your employer that you are receiving an ATRF pension so that pension contributions are not deducted

Working as a substitute teacher and other types of employment do not affect your ATRF pension




Steps to Receiving Your Pension

Other Retirement Considerations

- Extended health benefits**
 - Inquire with your employer's Human Resources personnel
 - Inquire with your current health benefits provider
- Government benefits**
 - Canada Pension Plan (CPP) and Old Age Security (OAS)
- Income Tax**
 - Tax slip prepared every year

Keep your contact information up to date!



Steps to Receiving Your Pension 43

43



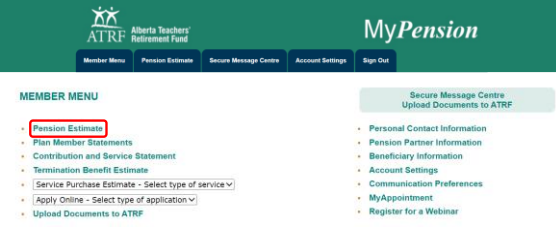

44

MyPension



Steps to Receiving Your Pension 45

45



Steps to Receiving Your Pension 46

46

Pension Estimate

This estimate is calculated as if you would commence your pension immediately, and is based on the data reported to ATRF up to August 31, 2022. Press the New Estimate button below to project service and salary beyond that date.

Estimated Annual Pension: **\$44,196.76**
 Basic Annual Pension: **\$44,196.76**
 % Reduction Factor: **No Reduction**
 Reduced Basic Monthly Pension: **\$3,683.06**

The monthly pension option amounts for this pension are shown below.

Your estimated monthly pension options are:	Gross Monthly Pension Before Tax
Single Life, no Guarantee	\$3,688.46
Single Life, 5-Year Guarantee (Basic Monthly Pension)	\$3,683.06
Single Life, 10-Year Guarantee	\$3,664.59
Single Life, 15-Year Guarantee	\$3,633.28
Joint and Survivor Pension - Joint Equal	\$3,429.03
Joint and Survivor Pension - Joint Reductible by 1/3 (reduces to 2/3 on death of retired member or spouse/pension partner)	\$3,400.29
Joint and Survivor Pension - Joint 100/90 (reduces to 60% on death of retired member)	\$3,528.32

This is an estimate of the pension you can expect to receive from the Alberta Teachers' Retirement Fund Board. It does not create any rights to a pension or any other benefit. In the event of any error or omission, the legal requirements of the Plan will govern. Your actual pension will be based on your records with ATRF at the time your pension is granted and applicable legislation in effect at that time.

You can produce your own estimate by pressing "New Estimate"

[View/Print PDF file](#) [New Estimate](#) [Apply Online](#) [Return to Member Menu](#)

Steps to Receiving Your Pension 47

47

Pension Estimate

Click here for information on how to use the pension estimator and on the limitations of the pension estimator.

Enter the following information:

- Additional Full-Time Equivalent Years**
26.6470 years + 0 (as of August 31, 2022)
- A New 5-Year Average Salary**
\$100960 - \$100960 (as of August 31, 2022)
- The date you expect to stop teaching**
End of Aug 2022 (Upper limit is the year you reach 71)

[New Estimate](#)
[Return to Member Menu](#)

Steps to Receiving Your Pension 48

48

ATRF Steps to Receiving Your Pension

49

Pension Estimate

The pension estimate is based on data you have entered and is calculated as if you would commence your pension on July 1, 2023.

Estimated Total Pensionable Service: **27,547** Basic Annual Pension: **\$45,952.24**
 5-Year ATRF Average Salary: **\$101,980** % Reduction Factor: **No Reduction**
 5-Year CPP Average Salary: **\$59,177** Basic Annual Pension: **\$45,952.24**
 Date You Expect to Stop Teaching: **June 2023** Reduced Basic Monthly Pension: **\$3,829.35**

Your estimated monthly pension options are:	Gross Monthly Pension Before Tax
Single Life, no Guarantee	\$3,835.37
Single Life, 5-Year Guarantee (Basic Monthly Pension)	\$3,829.35
Single Life, 10-Year Guarantee	\$3,808.72
Single Life, 15-Year Guarantee	\$3,773.67
Joint and Survivor Pension - Joint Equal	\$3,559.43
Joint and Survivor Pension - Joint Reducible by 1/3 (reduces to 2/3 on death of retired member or spouse/pension partner)	\$3,805.85
Joint and Survivor Pension - Joint 100/60 (reduces to 60% on death of retired member)	\$3,662.70

This is an estimate of the pension you can expect to receive from the Alberta Teachers' Retirement Fund Board. It does not create any rights to a pension or any other benefit. In the event of any error or omission, the legal requirements of the Plan will govern. Your actual pension will be based on your records with ATRF at the time your pension is granted and any legislation in effect at that time.

You can produce another estimate by pressing "New Estimate"

[View/Print PDF file](#) [New Estimate](#) [Apply Online](#) [Return to Member Menu](#)

49

50

50

51

MyPension Video Library

- [MyPension Overview](#)
- [How to Register for MyPension](#)
- [Using the Pension Calculator](#)
- [Booking an Appointment with a Pension Counsellor](#)
- [Register for a Webinar](#)
- [Going Paperless](#)
- [Secure Message Centre](#)

ATRF Alberta Teachers' Retirement Fund Steps to Receiving Your Pension

51

52

52

53

If there is any discrepancy between this presentation and the Plans, the provisions of the *Teachers' Pension Plans Act* and applicable legislation will determine the entitlements and options available.

ATRF Alberta Teachers' Retirement Fund

53

54

54