



Granary Road Field Trip 2024/2025

1 Active Learning Park.

11 Interactive Exhibits.

A **MILLION** Possibilities.





OUR GOAL:

Granary Road wishes to **captivate** the minds of students by instilling a new sense of appreciation for science and agriculture.

HOW DO WE ACHIEVE THIS?

Using an interactive learning approach, we offer curriculum-based field trip options centered around 11 themed exhibits. Our facility, which is spread over 36 acres and features 3.5 kilometers of trails, delivers hands-on activities that positively impact the students' minds. We bring **FUN** to every opportunity, while creating unique experiences through meaningful modalities.

MORE ABOUT OUR ACTIVE LEARNING PARK:

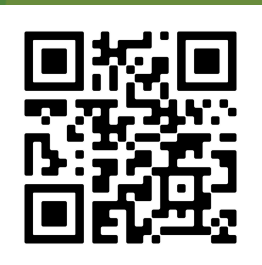
The pride and joy of Granary Road, our Active Learning Park is like no other learning experience available for the Southern-Alberta student. Featuring 36 acres of farmland, 3.5 kilometers of trails, 11 themed exhibits, and a staff of spirited Granary Road Guides, Granary Road takes children on a journey that inspires effective education.

Through hands-on activities, engaging videos, and interactive learning opportunities, Granary Road delivers content aligned with Alberta's teaching curriculum. Where the Park is a learning environment in its entirety, each individual exhibit sets down a unique educational proposition through learning walls, questionnaires, and fun activity features.

Check out this link to watch a short video:

https://www.instagram.com/reel/CdwLVNEFgMD/?utm_source=ig_web_copy_link





THE ACTIVE LEARNING PARK EXHIBITS:

Ant Farm Adventure

This exhibit features a 4 storey structure with slides, ant eggs, statues and climbing nets. Children will learn about ant anatomy, ant colonies, and all about life from an ant's point of view.

Wetland Discovery

Our wetlands feature a terrarium and dock, home to many amphibians, insects, and plants. The goal of this exhibit is to teach about Alberta's ecosystem and its inhabitants by pond dipping (catch & release) and observation.

Bat Cave Hang Out

This exhibit takes you through education tunnels and an echolocation bat maze that teaches about baby bats, bat diets and the spooky vampire bat.

Beehive Honeycomb

This exhibit will explore the behaviour of a bee through observation of a deconstructed beehive. It will demonstrate the importance of bees and their role in our environment, while examining a beekeeper's tools and uniform.

Farm Friends Petting Zoo

A working farm, this exhibit is home to goats, pigs, alpacas, bunnies, a pony, donkey, sheep, peacocks, turkeys, chickens, and barn cats. Children learn about animals in our food chain, animal care and other important animal facts!





Cropland Grow Row

Here at this exhibit, we have huge sand pits for kids to play in while being surrounded by barley, wheat, canola, and rye. Children will learn about Alberta's agriculture and the cultivation of crops.

Chicken Coop

The Chicken Coop is home to chickens and hens and teaches about egg anatomy, the reproduction cycle of a chicken, food conversion, and other fun chicken facts!

Frog Pond

Featuring in-ground trampolines, balance beams, and lily pad spinners, this exhibit teaches the basics about frogs. This includes frog metamorphosis, anatomy, different frog species, and facts about frog skin.

Mushroom Meander

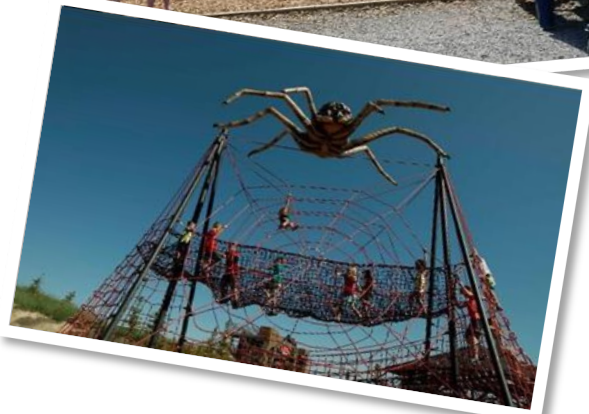
This exhibit takes children through an enchanted mushroom forest, through truffle tunnels, and up to a lookout tower! They will get to explore the anatomy of a mushroom, learn about poisonous mushrooms, and find out about mushroom DNA.

Orchard Treehouse

The Orchard features a giant apple slide, pear slide, and suspension bridge that takes children through a fruit fantasy land! They will learn about the growth cycle of fruit trees, the anatomy of an apple, and the observation of real fruit trees.

Arachnid Web

With spider swings and a giant web climber, this exhibit will teach about spider webs, the anatomy of an arachnid, and various types of spiders.





PICK, PLAN, & PLAY

How does it work?

The Granary Road experience begins the moment you choose to make our facility your field trip destination of choice. And by following these **3 easy steps**, your children are sure to enjoy an incredible learning event:

1. **PICK** – Pick & Reserve Your Field Trip Date.

The most important aspect of your field trip is securing the date of your event. Granary Road is a high-demand option and, as a result, finalizing a date is paramount. To secure your date, all you need to do is call our office at (403) 453-7623 and book it in with a \$100.00 credit card deposit.

2. **PLAN** – Choose Your Exhibits and Tally Your Numbers.

Your Field Trip to Granary Road will include general access to all the exhibits plus three (3) Educational Exhibit Lessons. These are learning opportunities that use interactive activities, engaging videos, and curriculum-based content to elevate comprehension. Each lesson is hosted by our Granary Road Guide and is approximately 25 to 30 minutes in length.

You will choose from our list of hand-crafted field trips, known as **Featured Field Trips**, or you will **Create Your Own**. The difference is whether you want to choose your own Educational Exhibit Lessons or leave that to us. Either way, children will receive curriculum-based learning and will have an incredible time!

Then, it's time to finalize your numbers. For every five (5) children in attendance, you will need one (1) adult Supervising Chaperone on hand. There is no cost for these Supervising Chaperones, and you can simply call or email us at fieldtrips@granaryroad.com with your final exhibit choices and numbers.

3. **PLAY** – Arrive to Granary Road and Let the Possibilities Unfold!

Whether by bus or car, travelling to our venue will be just part of the field trip experience! The sense of adventure will have already begun by the time you've hit the road, and we suggest you take this opportunity to further expand on the occasion. Use the travel time to educate, laugh, or just relax!

When you arrive to Granary Road, you will be greeted by our Hosting Team who already has your itinerary set out and ready to go. Simply follow their lead and let the day's enjoyment unravel!



OUR FEATURED FIELD TRIPS:

Our **Featured Field Trips** are approximately 2.0-2.5 hours in length and include:

- ☐ Access to all Learning Park exhibits
- ☐ Full day access to the Learning Park
- ☐ Three (3) Educational exhibit lessons

You get to choose from the following list of options, OR you can simply **Create Your Own!**

A BUG'S WORLD

Arachnid Web



Ant Farm



Beehive Honeycomb



GROWER'S GARDEN

Mushroom Meander



Orchard Tree House



Cropland Grow Row



FARM FUN

Cropland Grow Row



Farm Friends Petting Zoo



Chicken Coop



SWAMP LIFE

Frog Pond Fun Pad



Wetlands Discovery



Mushroom Meander



WINGS & THINGS

Chicken Coop



Beehive Honeycomb



Bat Cave Hangout





CREATE YOUR OWN FIELD TRIP!

As much as Granary Road knows field trips, we will never know your group of children as well as you do. So, let us give you the reins and allow you to choose the exhibits that you want to use for your Educational Exhibit Lessons.

All you need to do is simply call or email us at fieldtrips@granaryroad.com with your final exhibit choices!

Guided Vs Unguided Tours

A **GUIDED TOUR** allows you to enjoy the whole park with structured tour time for 3 exhibits. The tour includes a guide that will assist you at the 3 chosen exhibits. They will give a mini presentation at each of the exhibits. A guided tour provided approx. 2.5 hours of instruction time. After the guided part of the day is over your group can explore the rest of the park on their own.

An **UNGUIDED TOUR** allows you to enjoy the whole park with no structured tour time, nor a guide.

IN A NUTSHELL:

- The Granary Road Active Learning Park is open May-October.
- The Park is open for Field Trips 9:00am-5:00pm.
- The admission is \$12.00 + GST for children and adults.
- For every 5 adults, we require 1 supervising Chaperone to be present at no charge.
- The field trip can accommodate up to 30 children per-group.
- The most important thing to do is email us at fieldtrips@granaryroad.com and reserve your field trip date.
- Field trips are reserved with a \$100.00 credit card deposit.
- The full balance of your payment is due the day of your event prior to entering the Park.
- The exhibits you choose need to be secured when placing your deposit.
- Each Featured Field Trip or Create Your Own option includes 3 Educational Exhibit Lessons.
- Your field trip tours are self-guided and supervising Chaperones need to keep to the schedule.
- All Field Trips include access to the entire park for the entire day if desired.

HAVE A FEW MORE QUESTIONS? KEEP READING FOR OUR FAQ!



FREQUENTLY ASKED QUESTIONS

Q: What times of year is the Granary Road Active Learning Park available for Field Trips?

A: The Granary Road Active Learning Park is open from the beginning of May until the end of October. Of course, we are always subject to the severity of weather conditions.

Q: What are the hours of operation for Granary Road's Active Learning Park?

A: The Active Learning Park is open from 9:00am-5:00pm daily, 7 days a week!

Q: What if the weather is too cold at the beginning of May and the Park is scheduled to open?

A: If the weather will not permit us to open in the beginning of May as scheduled, we will simply delay opening until the weather is in our favour.

Q: What happens if we book a Field Trip on a day that the Park cannot open due to weather?

A: We will cancel your event for that day and will re-schedule it for another day. Your deposit will be transferred to the new day.

Q: What if our event day is cancelled due to weather and we are unable to find another day that works will we get our deposit back?

A: The deposit you put down for your Field Trip will be kept on file for a new Field Trip date in the future. You don't get your deposit back, but you won't lose it either. You will have a credit on file.

Q: Does the Granary Road Active Learning Park open when it is raining or when it is windy out?

A: Yes, the Granary Road Active Learning Park is open when it is raining or when it is windy out.

Q: What time do most Field Trips start?

A: Most planners like to start their field trips nice and early in the morning, thus 9:00am is the time we start booking field trips in. This allows the group plenty of time to enjoy the educational components, while still having time to enjoy some free time in the afternoon.



Q: Do we have to do our Field Trip in the morning, or are there other times throughout the day we can book in?

A: The most desirable time to get a field trip started for most groups is 9:30am. However, we do offer other times that a field trip can start – 10:30am, 11:30am, 12:30pm, and 1:30pm.

Q: How much does it cost to do a Field Trip at Granary Road's Active Learning Park?

A: We base our costs of a per-person cost factor of \$12.00 + GST. For every child and adult that come through on a field trip, the cost will be \$12.00 + GST X the number of people. Keep in mind, that for every five (5) children there is one (1) supervising Chaperone required. These supervising Chaperones are at no cost on that 5:1 ration. All other adults attending is at the regular cost of \$12.00 + GST.

Q: Does the Field Trip admission to Granary Road's Active Learning Park include transportation?

A: The cost of admission does not include transportation costs to Granary Road. At the present time, Granary does not provide a transportation option for Park attendees. Southland Charter Transportation phone number to book a charter bus is 403.398.2244. Booking a bus in advance is pertinent to your Field Trip as school buses book quickly during Field Trip season.

Q: Does the field trip admission to Granary Road's Active Learning Park include lunch or snacks?

A: The cost of admission does not include lunch or snacks while at Granary Road.

Q: Are we allowed to drop the children off at the park and pick them up later?

A: Unfortunately, no. Children must always be supervised by adults at the Chaperone ratio of 1:5 children.

Q: Does the Field Trip run continuously or is there any time set aside for breaks, snacks, or lunch?

A: With all our field trips we set aside enough time for the children to break for snacks or lunch. In a typical Field Trip, there is 30-40 minutes allotted for breaks.

Q: What areas does our group have access to when we are at Granary Road doing our Field Trips?

A: Your group will have access to the Active Learning Park as a whole, the 12 different themed exhibits, the picnic groups, and play areas. They will also have access to restroom facilities.



Q: Is there a place where we can store our valuables while at the Granary Road Active Learning Park?

A: At the present time, we ask that you and your group keep all valuables with you as we do not have an area set aside for storage. We are also not responsible for lost, stolen, or damaged items.

Q: How much of a deposit is required to book a Field Trip?

A: We require a \$100.00 deposit for one of our field trips made at the time of booking. The deposit will hold your spot until we receive full payment.

Q: Is the deposit for our Field Trip refundable if we decide to cancel?

A: The deposit for your field trip is non-refundable. In the event you decide to cancel your field trip, you will not receive a refund. Instead, you can apply the credit to a new, future date.

Q: What method of payment do you accept when you take the deposit for our Field Trip?

A: We prefer to take a credit card at the time of booking. If a credit card is not possible, we will hold the spot for 72-hours while a check is being drafted and dropped off at our office.

Q: When is the full balance of our payment due for our Field Trip?

A: The full balance of your payment for your Field Trip is due on the date of your field trip. Prior to entering the facility to begin your event, you will need to pay the full balance of the amount outstanding.

Q: When making our final payment, what method of payment will Granary Road accept?

A: You can pay with your credit card prior to arriving, you can use your debit card on the day of or you can bring a check on the date of your event.

Q: Is there GST added on top of the \$12.00 charged per-person for admission?

A: Yes, GST is charged on top of the admission price. This will bring the full cost per-person to \$12.60.



Q: When we get a check made out for our deposit or final payment, who do we make it to out and what details do we need to provide?

A: All check payments should be made out to: Granary Road FEC LTD. For accounting purposes, the information that needs to be supplied to us include client name, client mailing address, client phone number, and client email address.

Q: What should the children wear when they come to Granary Road's Active Learning Park for their Field Trip?

A: Students should dress and be prepared for varying weather conditions as all the field trip programming is held outdoors. Proper walking shoes are required. Close-toed is preferred.

Q: What things should we have our children pack when they come to the Granary Road Active Learning Park for their field trip?

A: We recommend that all children and Chaperones bring the following items:

- ☐ Comfortable walking shoes/runners.
- ☐ Lunch &/or snacks.
- ☐ Water bottles.
- ☐ Layered clothing – jackets and sweaters, etc.
- ☐ Sun protection – hats, sunscreen, etc., and
- ☐ Insect repellent.

Q: What will our children learn about when they attend the Granary Road Active Learning Park?

A: Students will learn about farming, animals, plants, organisms, and agriculture. All exhibits are designed to match science curriculum of all grade levels.

Q: What are the most popular exhibits in the Granary Road Active Learning Park?

A: There is no one exhibit that stands out from the next, as the enjoyment received out of each station is based on personal preference. Therefore, we like to say that the exhibits are unilaterally equal in quality.



Q: How early do we have to book a field trip, so we do not miss out on a potential opening or date?

A: We highly recommend you book your field trip several months in advance to avoid missing out on a date that is available. Being a high-demand service, we book field trips far in advance, thus it is important to book early. If you are planning your field trip last minute, give us a call at (403) 453-7623 and we will do everything possible to make your field trip happen for you.

Q: When do we have to have our final exhibits selected?

A: We need to have all final exhibit choices into our scheduling system when making the deposit. This is to allow us to schedule staff properly and to ensure the highest level of customer service.

Q: Is there a cost to have our bus or cars park out in the parking lot?

A: There is no cost for a bus or cars to park in our parking lot while their group does a Field Trip at Granary Road.

Q: What kinds of groups are eligible to do a field trip at the Granary Road Active Learning Park?

A: The Granary Road Active Learning Park field trip package is available to children's groups in school divisions, day care centers, home schools, recreational programs, Montessori schools, and from religious or church groups.

Q: Can special needs children come to do a Granary Road Active Learning Park field trip?

A: Yes, Granary Road welcomes children with special needs. We just need to note that some of the activities may not be accessible to certain children based on their physical needs.

Q: How many children are required to do a field trip with Granary Road?

A: Granary Road can accommodate field trips of all sizes, ranging from 15 children to several hundred. It is important to note that field trips are broken down into group of a maximum size of 25. For groups larger than 25, the groups will be split up as needed. Minimum class sizes are required to have 15 students minimum.