



This document is scheduled to be published in the Federal Register on 08/15/2013 and available online at <http://federalregister.gov/a/2013-19824>, and on FDsys.gov

BILLING CODE 6717-01-P
DEPARTMENT OF ENERGY
FEDERAL ENERGY REGULATORY COMMISSION

Eastern Shore Natural Gas Company

Docket No. CP13-498-000

NOTICE OF INTENT TO PREPARE AN
ENVIRONMENTAL ASSESSMENT FOR THE PROPOSED
WHITE OAK LATERAL PROJECT
REQUEST FOR COMMENTS ON ENVIRONMENTAL ISSUES

The staff of the Federal Energy Regulatory Commission (FERC or Commission) will prepare an environmental assessment (EA) that will discuss the environmental impacts of the White Oak Lateral Project involving construction and operation of facilities by Eastern Shore Natural Gas Company (Eastern Shore) in Kent County, Delaware. The Commission will use this EA in its decision-making process to determine whether the project is in the public convenience and necessity.

This notice announces the opening of the scoping process the Commission will use to gather input from the public and interested agencies on the project. Your input will help the Commission staff determine what issues they need to evaluate in the EA. Please note that the **scoping period will close on September 9, 2013.**

You may submit comments in written form or verbally. Further details on how to submit written comments are in the Public Participation section of this notice

This notice is being sent to the Commission's current environmental mailing list for this project. State and local government representatives should notify their constituents of this proposed project and encourage them to comment on their areas of concern.

If you are a landowner receiving this notice, a pipeline company representative may contact you about the acquisition of an easement to construct, operate, and maintain the proposed facilities. The company would seek to negotiate a mutually acceptable agreement. However, if the Commission approves the project, that approval conveys with it the right of eminent domain. Therefore, if easement negotiations fail to produce an agreement, the pipeline company could initiate condemnation proceedings where compensation would be determined in accordance with state law.

Eastern Shore provided landowners with a fact sheet prepared by the FERC entitled “An Interstate Natural Gas Facility On My Land? What Do I Need To Know?”. This fact sheet addresses a number of typically-asked questions, including the use of eminent domain and how to participate in the Commission's proceedings. It is also available for viewing on the FERC website (www.ferc.gov).

Summary of the Proposed Project

Eastern Shore proposes to construct, own, operate, new natural gas facilities in the Dover area of Kent County, Delaware. The White Oak Lateral Project would provide about 55,200 dekatherms of natural gas per day to Calpine Energy Services, L.P. to fuel the Garrison Energy Center, a proposed 309-megawatt combined cycle natural gas fueled power plant under development in Kent County, Delaware.

The White Oak Lateral Project would consist of the following facilities:

- approximately 5.5 miles of 16-inch-diameter natural gas pipeline;
- one mainline valves assembly; and
- metering and regulating facility.

The general location of the project facilities is shown in appendix 1.¹

Land Requirements for Construction

Construction of the proposed facilities would disturb approximately 118 acres of land for the aboveground facilities and the pipeline. Following construction, Eastern Shore would maintain about 10 acres for permanent operation of the project's facilities; the remaining acreage would be restored and revert to former uses. Approximately 63 percent of the proposed pipeline route parallels existing pipeline, utility, or road rights-of-way.

The EA Process

The National Environmental Policy Act (NEPA) requires the Commission to take into account the environmental impacts that could result from an action whenever it

¹ The appendices referenced in this notice will not appear in the Federal Register. Copies of appendices were sent to all those receiving this notice in the mail and are available at www.ferc.gov using the link called “eLibrary” or from the Commission’s Public Reference Room, 888 First Street NE, Washington, DC 20426, or call (202) 502-8371. For instructions on connecting to eLibrary, refer to the last page of this notice.

considers the issuance of a Certificate of Public Convenience and Necessity. NEPA also requires us² to discover and address concerns the public may have about proposals. This process is referred to as “scoping.” The main goal of the scoping process is to focus the analysis in the EA on the important environmental issues. By this notice, the Commission requests public comments on the scope of the issues to address in the EA. We will consider all filed comments during the preparation of the EA.

In the EA we will discuss impacts that could occur as a result of the construction and operation of the proposed project under these general headings:

- geology and soils;
- land use;
- water resources, fisheries, and wetlands;
- cultural resources;
- vegetation and wildlife;
- air quality and noise;
- endangered and threatened species; and
- public safety.

We will also evaluate reasonable alternatives to the proposed project or portions of the project, and make recommendations on how to lessen or avoid impacts on the various resource areas.

The EA will present our independent analysis of the issues. The EA will be available in the public record through eLibrary. Depending on the comments received during the scoping process, we may also publish and distribute the EA to the public for an allotted comment period. We will consider all comments on the EA before making our recommendations to the Commission. To ensure we have the opportunity to consider and address your comments, please carefully follow the instructions in the Public Participation section beginning on page 4.

With this notice, we are asking agencies with jurisdiction by law and/or special expertise with respect to the environmental issues of this project to formally cooperate with us in the preparation of the EA³. Agencies that would like to request cooperating agency status should follow the instructions for filing comments provided under the Public Participation section of this notice.

² “We,” “us,” and “our” refer to the environmental staff of the Commission’s Office of Energy Projects.

³ The Council on Environmental Quality regulations addressing cooperating agency responsibilities are at Title 40, Code of Federal Regulations, Part 1501.6.

Consultations Under Section 106 of the National Historic Preservation Act

In accordance with the Advisory Council on Historic Preservation's implementing regulations for section 106 of the National Historic Preservation Act, we are using this notice to initiate consultation with applicable State Historic Preservation Office (SHPO), and to solicit their views and those of other government agencies, interested Indian tribes, and the public on the project's potential effects on historic properties.⁴ We will define the project-specific Area of Potential Effects (APE) in consultation with the SHPO as the project develops. On natural gas facility projects, the APE at a minimum encompasses all areas subject to ground disturbance (examples include construction right-of-way, contractor/pipe storage yards, compressor stations, and access roads). Our EA for this project will document our findings on the impacts on historic properties and summarize the status of consultations under section 106.

Public Participation

You can make a difference by providing us with your specific comments or concerns about the project. Your comments should focus on the potential environmental effects, reasonable alternatives, and measures to avoid or lessen environmental impacts. The more specific your comments, the more useful they will be. To ensure that your comments are timely and properly recorded, please send your comments so that the Commission receives them in Washington, DC on or before **September 9, 2013**.

For your convenience, there are three methods you can use to submit your comments to the Commission. In all instances please reference the project docket number (CP13-498-000) with your submission. The Commission encourages electronic filing of comments and has expert staff available to assist you at (202) 502-8258 or efiling@ferc.gov.

- (1) You can file your comments electronically using the [eComment](#) feature on the Commission's website (www.ferc.gov) under the link to [Documents and Filings](#). This is an easy method for interested persons to submit brief, text-only comments on a project;
- (2) You can file your comments electronically using the [eFiling](#) feature on the Commission's website (www.ferc.gov) under the link to [Documents and Filings](#). With eFiling, you can provide comments in a variety of formats by

⁴ The Advisory Council on Historic Preservation's regulations are at Title 36, Code of Federal Regulations, Part 800. Those regulations define historic properties as any prehistoric or historic district, site, building, structure, or object included in or eligible for inclusion in the National Register of Historic Places.

attaching them as a file with your submission. New eFiling users must first create an account by clicking on “[eRegister](#).” You must select the type of filing you are making. If you are filing a comment on a particular project, please select “Comment on a Filing”; or

- (3) You can file a paper copy of your comments by mailing them to the following address:

Kimberly D. Bose, Secretary
Federal Energy Regulatory Commission
888 First Street NE, Room 1A
Washington, DC 20426

Environmental Mailing List

The environmental mailing list includes federal, state, and local government representatives and agencies; elected officials; environmental and public interest groups; Native American Tribes; other interested parties; and local libraries and newspapers. This list also includes all affected landowners (as defined in the Commission’s regulations) who are potential right-of-way grantors, whose property may be used temporarily for project purposes, or who own homes within certain distances of aboveground facilities, and anyone who submits comments on the project. We will update the environmental mailing list as the analysis proceeds to ensure that we send the information related to this environmental review to all individuals, organizations, and government entities interested in and/or potentially affected by the proposed project.

If we publish and distribute the EA, copies will be sent to the environmental mailing list for public review and comment. **If you would prefer to receive a paper copy of the document instead of the CD version or would like to remove your name from the mailing list, please return the attached Information Request (appendix 2).**

Becoming an Intervenor

In addition to involvement in the EA scoping process, you may want to become an “intervenor” which is an official party to the Commission’s proceeding. Intervenor play a more formal role in the process and are able to file briefs, appear at hearings, and be heard by the courts if they choose to appeal the Commission's final ruling. An intervenor formally participates in the proceeding by filing a request to intervene. Instructions for becoming an intervenor are in the User’s Guide under the “e-filing” link on the Commission’s website.

Additional Information

Additional information about the project is available from the Commission's Office of External Affairs, at (866) 208-FERC, or on the FERC website at www.ferc.gov using the “eLibrary” link. Click on the eLibrary link, click on “General Search” and enter the docket number, excluding the last three digits in the Docket Number field (i.e., CP13-498). Be sure you have selected an appropriate date range. For assistance, please contact FERC Online Support at FercOnlineSupport@ferc.gov or toll free at (866) 208-3676, or for TTY, contact (202) 502-8659. The eLibrary link also provides access to the texts of formal documents issued by the Commission, such as orders, notices, and rulemakings.

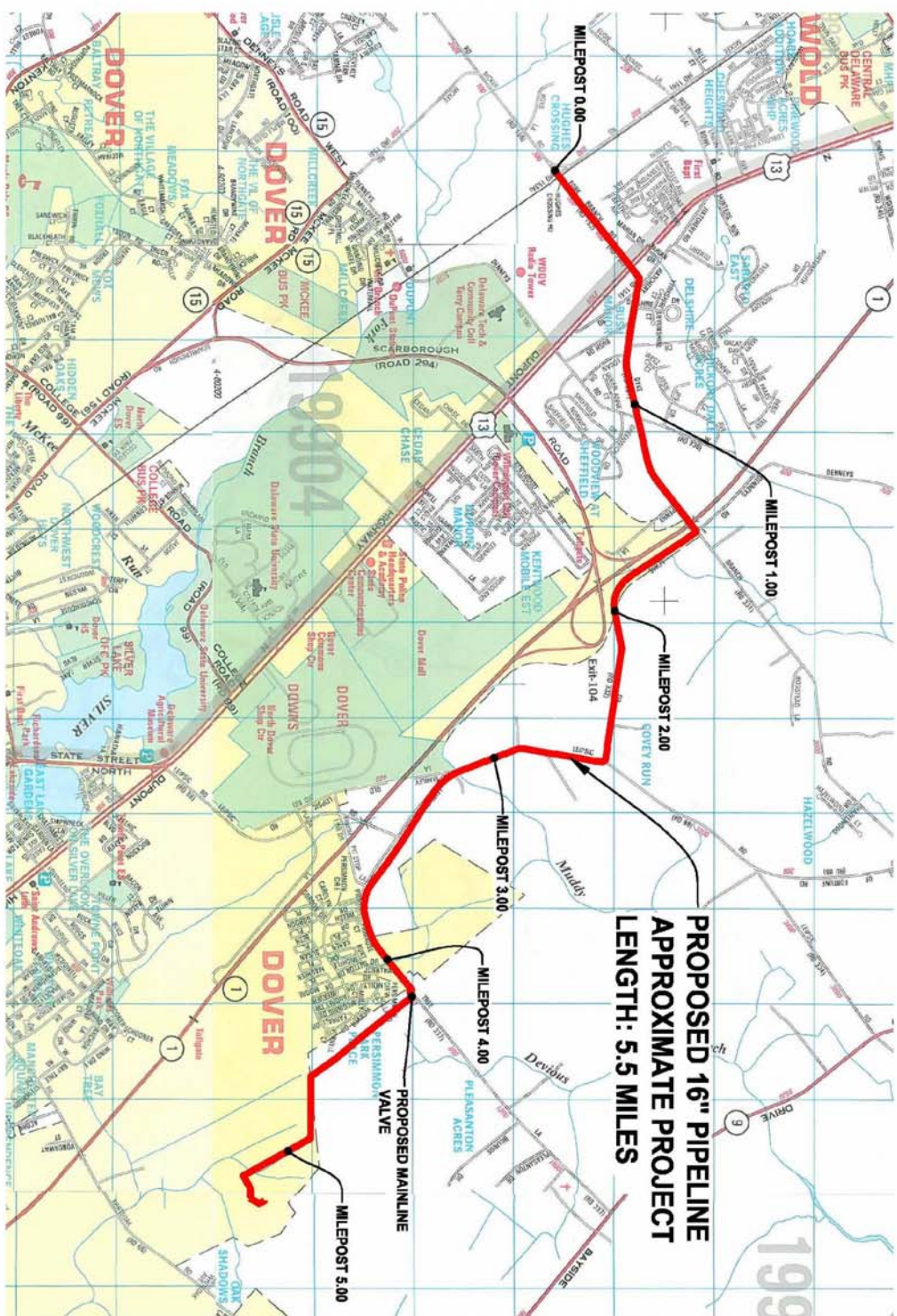
In addition, the Commission offers a free service called eSubscription which allows you to keep track of all formal issuances and submittals in specific dockets. This can reduce the amount of time you spend researching proceedings by automatically providing you with notification of these filings, document summaries, and direct links to the documents. Go to www.ferc.gov/esubscribenow.htm.

Finally, public meetings or site visits will be posted on the Commission’s calendar located at www.ferc.gov/EventCalendar/EventsList.aspx along with other related information.

Dated: August 9, 2013

Kimberly D. Bose,
Secretary.

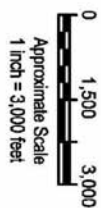
Appendix 1



**PROPOSED 16" PIPELINE
APPROXIMATE PROJECT
LENGTH: 5.5 MILES**



NOTE: THIS SKETCH WAS ADAPTED FROM A STREET MAP OF KENT COUNTY, DELAWARE PREPARED BY ADC. COPYRIGHT ADC THE MAP PEOPLE. PERMITTED USE NUMBER 2100628.



GEO-TECHNOLOGY ASSOCIATES, INC.
GEOTECHNICAL AND ENVIRONMENTAL CONSULTANTS

3445-A BOX HILL CORPORATE CENTER DRIVE
ABINGDON, MARYLAND 21009
410-515-9446
FAX: 410-515-4895
WWW.MRAGTA.COM

© 2013 GEO-TECHNOLOGY ASSOCIATES, INC.

SITE LOCATION MAP

WHITE OAK LATERAL

KENT COUNTY, DELAWARE

JOB NO.

130102

SCALE:

 $1''=3000$

DATE:

JULY 2013

DRAWN I

DGV/JMW

REVIEW BY:

TABLE 1.

FIGURE:

4

INFORMATION REQUEST

White Oak Lateral Project

Name _____

Agency _____

Address _____

City _____ **State** _____ **Zip Code** _____

☐ **Please send me a paper copy of the published NEPA document**

☐ **Please remove my name from the mailing list**

FROM_____

ATTN: OEP - Gas 4, PJ - 11.4
Federal Energy Regulatory Commission
888 First Street NE
Washington, DC 20426

(CP13-498-000 White Oak Lateral Project)

Staple or Tape Here

[FR Doc. 2013-19824 Filed 08/14/2013 at 8:45 am; Publication Date: 08/15/2013]