

VuPoint (V300)

V-Series Inswing Door w/ ADA Friendly Threshold

Installation Guide

IG-092 06/19 V. 1.0



VuPoint

Scan Here for a Digital Version of the Installation Guides in English.

Quartz Luxury Windows & Doors:
www.quartzluxurywindows.com



VuPoint

Scan Here for a Digital Version of the Installation Guides in English.

Quartz Residential Windows & Doors:
www.quakerresidentialwindows.com



V300

Scan Here for a Digital Version of the Installation Guides in English.

Quaker Commercial Windows & Doors:
www.quakercommercialwindows.com

If this set of instructions does not match your installation method or the wall conditions of the job site, please check our website listed below for other options, or call Quaker Customer Service for additional information.



Quaker Window Products
504 U.S. Hwy 63 South
Freeburg, MO 65035
(800) 347-0438
www.quakerwindows.com



PO Box 128

| 504 Highway 63 South

| Freeburg, MO 65035

| 800-347-0438

| 573-469-4151 (fax)

Vupoint (V300)

V-Series Inswing Door w/ ADA Friendly Threshold Installation Guide

Read these instructions completely before starting any installation. Failure to install and maintain our product according to these instructions may void any product warranty. Please visit our website at www.quakerwindows.com or call 1-800-347-0438 for additional information.

Tools required by installer:

Safety Glasses



Utility Knife



Drill/Driver



Caulk Gun



Level



Tape Measure



Hammer



J-Roller



Putty Knife



Staple Gun



Materials required by installer:

Foam
Backer RodMinimally
Expanding FoamShims
(Waterproof)

Sealant

Flashing tape
(Self-Adhering)Water Resistant
Barrier/House Wrap
(WRB)

Fasteners



IPA Alcohol

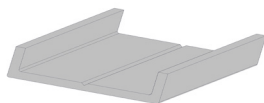
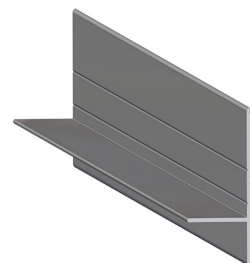


Drip Cap

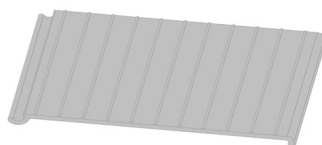


Materials Supplied by Manufacturer:

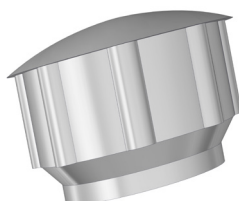
Starter Track - U Channel

Positioning Fins
(Optional)

Frame Sill Ramp

Corner Foam Gaskets
(Optional)

3/8" Hole Plug





WARNING

Tools

- Follow manufacturer's instructions for safe operation of tools, and ladders/scaffolding. Always wear safety glasses. Failure to do so could result in injury, product or property damage.

Handling

- Do not store units outside, or in a hot environment. Doing so could result in product damage.
- **Do not carry flat.** Doing so could result in product damage, injury, or property damage.
- Stack units as straight as possible to avoid bowing. **Do not lay flat!**

Glass

- If broken, glass can fragment causing injury. All Quaker products are available with safety glass. In many areas, local building codes require safety glass in certain locations and/or applications. Unless safety glass is ordered, Quaker windows are not provided with safety glass. Before ordering, consult your local building codes for more definitive information.

Fastening

- Metal fasteners and components could corrode when used with preservative-treated lumber. Use approved fasteners and components to fasten window or door. Failure to do so could cause a failure resulting in injury, product or property damage.
- Fastener must attach to a structural framing member with 1 1/2" minimum fastener embedment, or minimum 3 full threads with a minimum 5/16" head as products were tested with.
- ***Quaker does not supply anchorage/fastener calculations, and is not responsible for determining structural adequacy of the anchorage and fasteners used to install our products, or the openings into which they are installed.***
- **Do not** over drive screws or nails. Doing so could result in product damage.

CAUTION

Installation

- Always support window or door in opening until fully fastened. Failure to do so could result in the window or door falling out or causing injury, product, or property damage.
- Nailing flanges and drip caps (integral or applied) **do not** take the place of window flashing. All windows and doors must be properly flashed and sealed with material compatible sealant for protection against water and air infiltration around the entire perimeter. Failure to do so could result in product or property damage.
- **Do not** set window directly on sill plate. Place shims under the side jambs. Window or door must be properly shimmed. Failure to do so could affect operation and product performance and could result in product damage.
- Live or dead loads transferred into our product can affect functionality, damage frame joinery or cause glass failures. Dead loads such as upper levels, roof, etc. Should be constructed before window or door is installed.
- Loads shall be designed to withstand the most critical effects of load factors and load combinations as required by the building code. (Loads are including but not limited to Live, Dead, Collateral, Auxiliary, Thermally induced, Seismic, etc.)
- Maximum vertical deflection of the header under all Load combination should not exceed the Span/720 or 1/4" whichever is less.
- Windows and doors have small parts. Small parts if swallowed could pose a choking hazard to young children. Dispose of unused, loose, or easily removed small parts. Failure to do so could result in injury.
- **Do not** drill through or into window sill to install alarm wires.

Sealing

- Follow instructions of foam, sealant, and flashing manufacturers regarding safety, material application, compatibility, and periodic maintenance for continued weather resistance of their products. Failure to do so could result in product or property damage. **DO NOT** overfill between the frame and opening.
- Minimally expanding foam insulation must be compliant with AAMA 812-19.
- Quaker recommends 100% silicone (ASTM C920 compliant) neutral cure only sealant. Always clean all areas where sealant will be applied. Failure to do so could result in product or property damage.
- Flashing tape must meet ASTM-D779 performance requirements.
- Maintain a minimum of 1/4" between the window or door frame and exterior finish materials. Failure to do so could result in product or property damage.

Joining

- Do not join any window or door to any window or door not designed for joining. Joined windows and doors must be individually supported in the opening. Failure to do so could affect operation and product performance and could result in product or property damage.

Cleaning

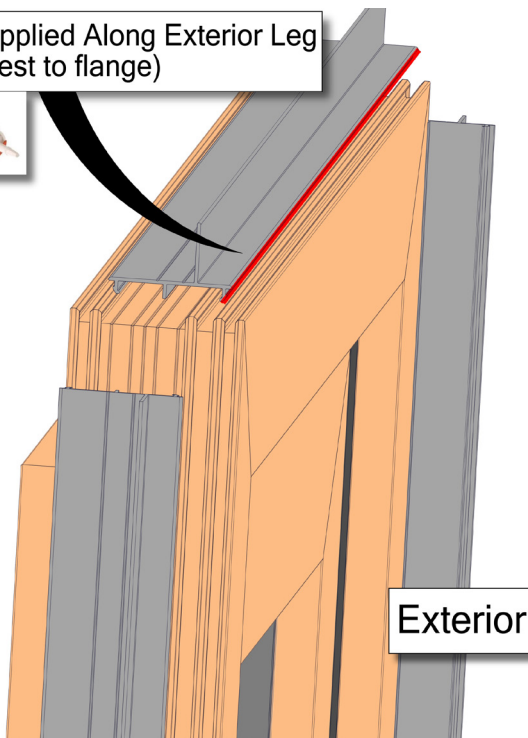
- Acid solutions used for cleaning will damage glass, fasteners, hardware, and metal flashing. Protect these products and follow cleaning products manufacturers instructions. If acid contacts the window or door, wash all surfaces immediately with clean water.
- **Do not** use razor blades to clean glass surface. Glass damage could result.
- Clean glass using liquid glass cleaner.
- Clean frame, sash, panels, and insect screens using mild detergent and warm water with a soft cloth or brush.

IMPORTANT

- Buildings constructed prior to 1978 could contain lead paint which could be disturbed during window or door replacement. For more information on proper management of lead paint, go to: www.epa.gov/lead
- Care must be taken to properly recycle or dispose of old materials. Any recyclable materials should be separated from non-recyclable or hazardous materials. Please consult with local or state authorities regarding proper disposal of non-recyclable or hazardous materials.
- These are generic instructions intended to cover most common situations, which may not be appropriate for all installations due to building design, construction materials, or methods used and/or building or site conditions. Consult a contractor or architect for recommendations.
- Inspect all units for any damage or defects prior to installation. Contact the nearest Quaker distributor if there are any problems.

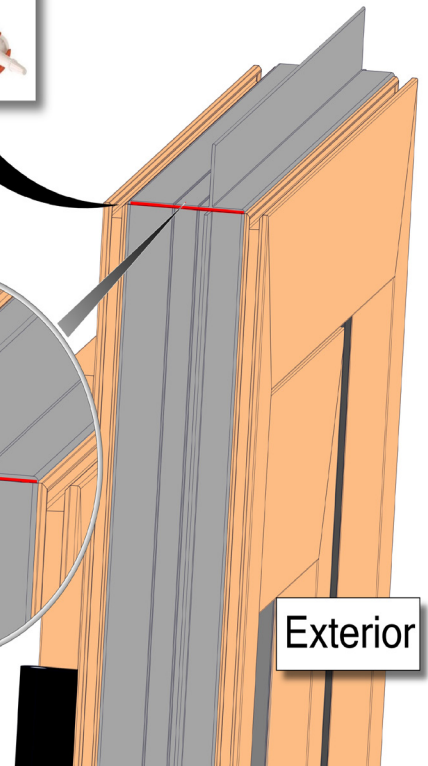
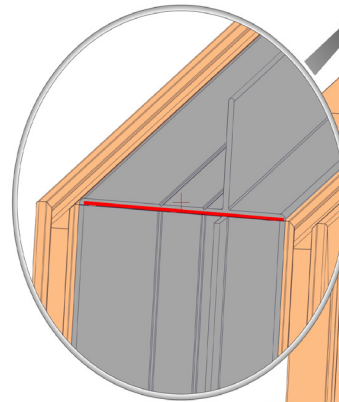
1

Sealant Applied Along Exterior Leg
(Leg nearest to flange)



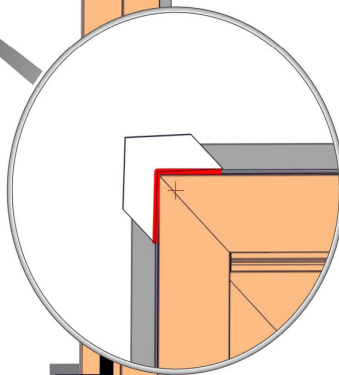
Skip steps 1-4 if your door does not have positioning fins.
Install the position fin onto the frame on the head and both side jambs. Apply a 3/8" continuous bead to the exterior leg of each positioning fin.

2



Snap the fin into place with short side of the flange facing the exterior. Seal the corners of the position fin.

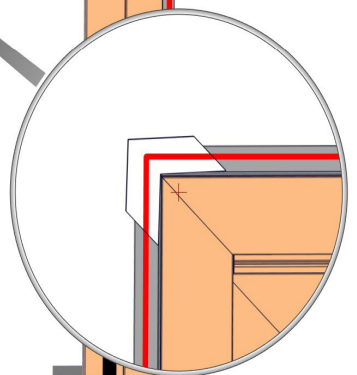
3



Exterior

Install the two top foam corner key gaskets over the exterior side of the position fin corner gaps. Seal the exterior corners where the foam gasket meets the position fin.

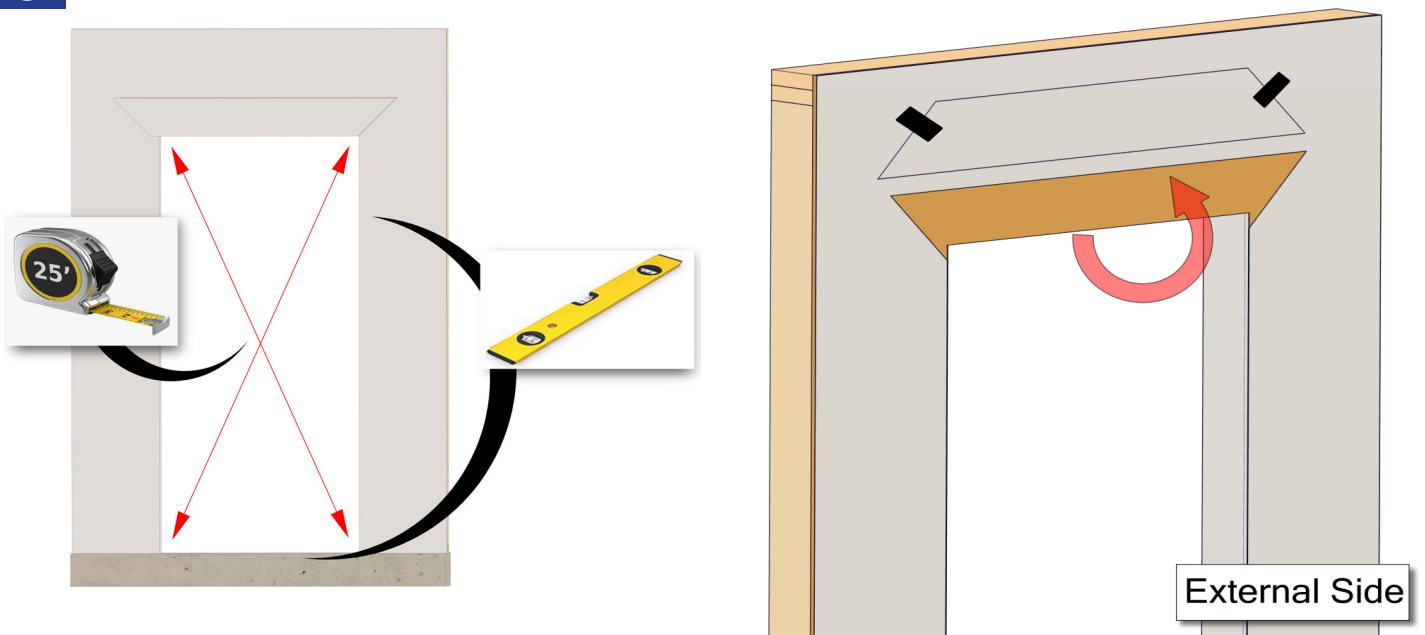
4



Exterior

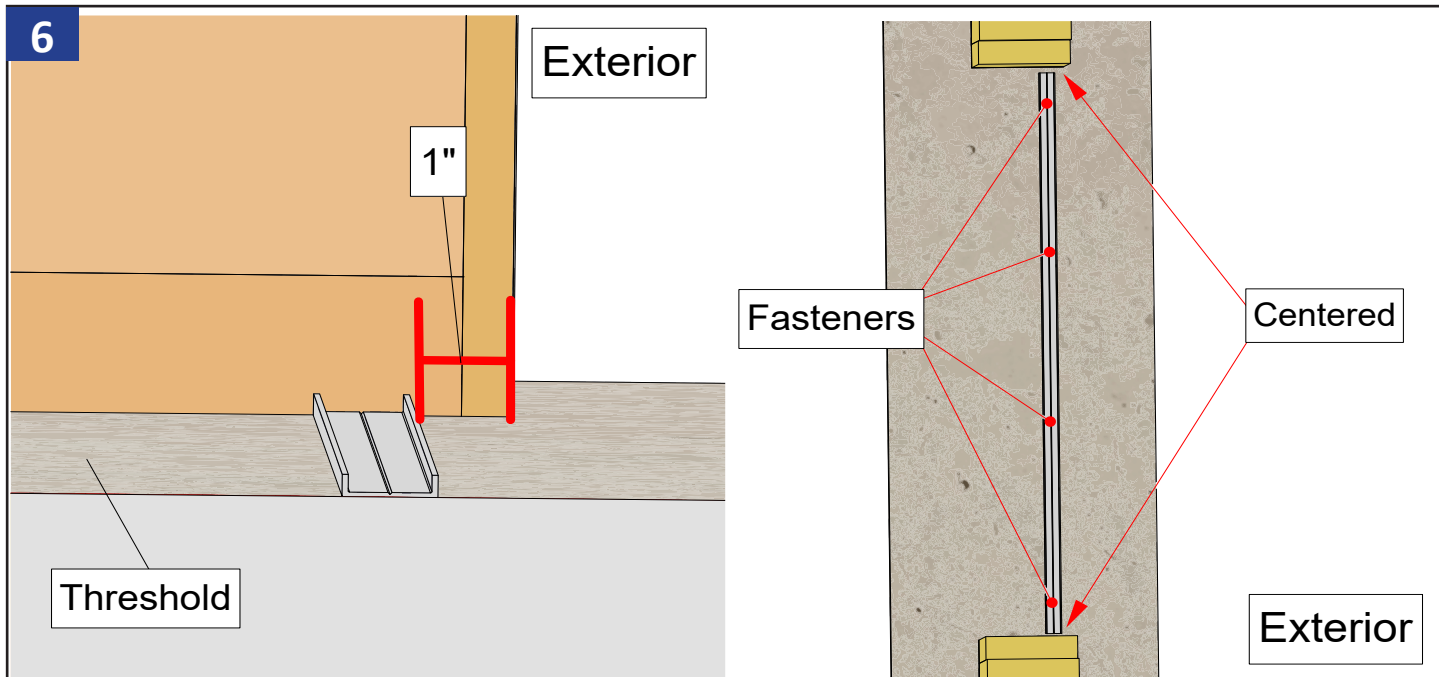
Apply a continuous bead of sealant around the interior side of the position fin. This will create a seal between the door and the opening condition when the door is installed.

5



Measure and verify the size of the rough opening. See shop drawings for the proper opening sizes. Verify the rough opening is flat, plumb, level, and square. If building wrap is used, fold weatherproofing up and temporarily tape in place.

6



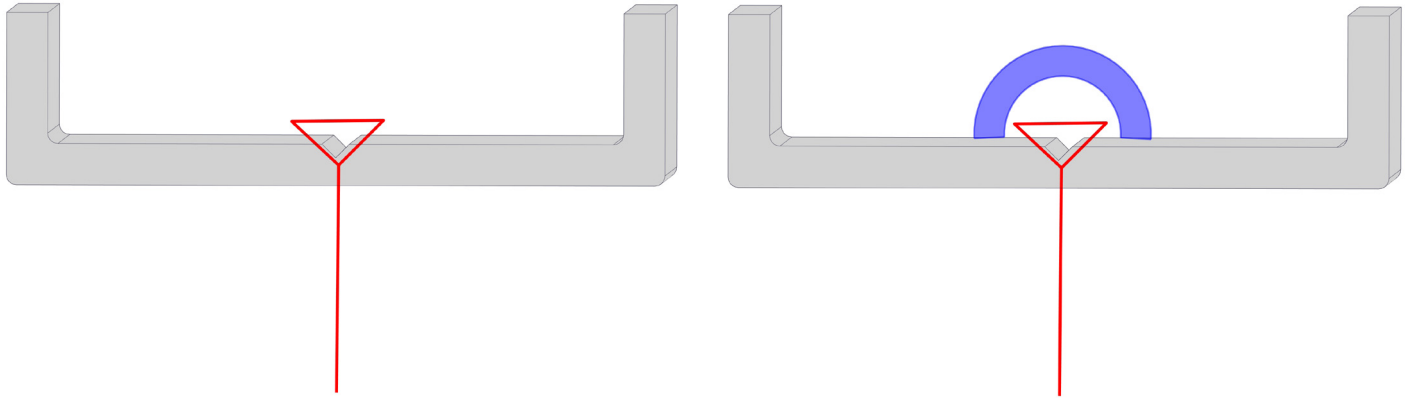
If using positioning fins, the starter track should be installed 1" back from the exterior sheathing.

If omitting positioning fins, no exact location is required, but it is recommended to place the starter track farther to the interior to ensure full travel of the internal panel.

Center the starter track and make sure the conditions are level. **THRESHOLD MUST BE LEVEL!**

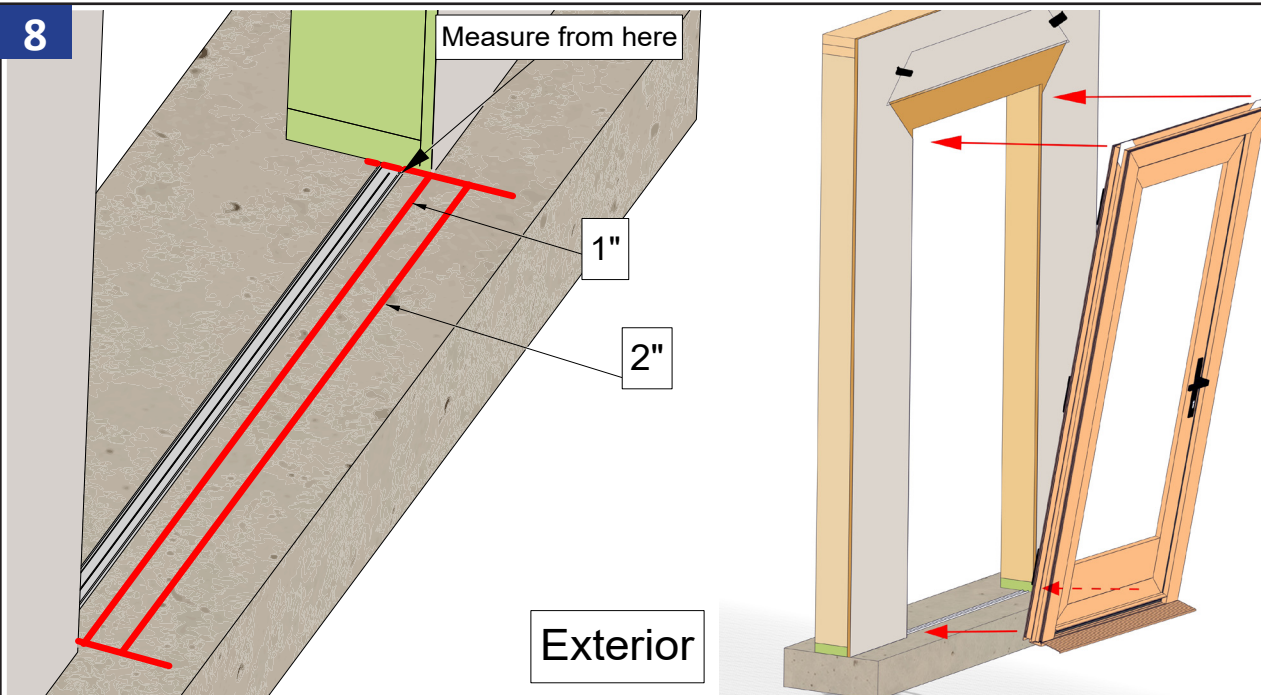
Quaker recommends **self-leveling concrete**, if not available - shim 12" or less on center. After installing starter track, pre-drill holes and fasten the starter track in place with screws per shop drawings or anchorage calculations.

7



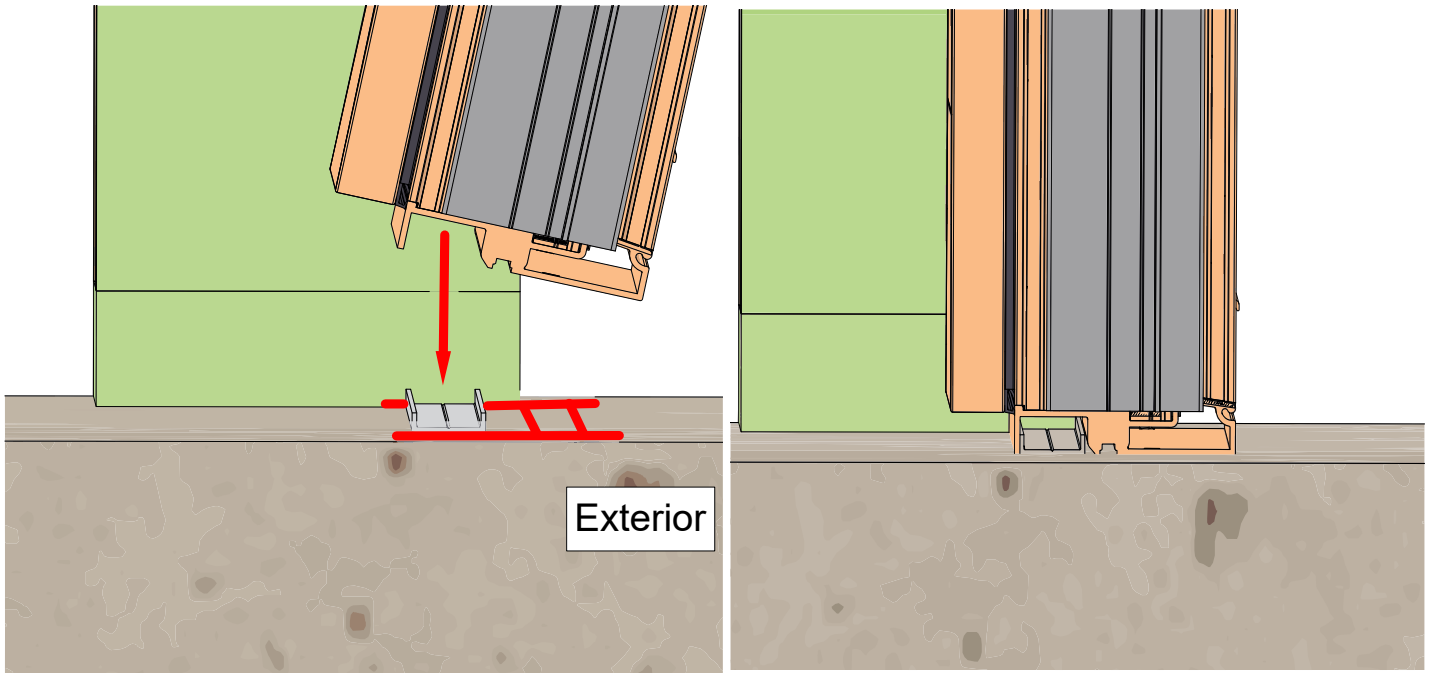
Fasteners should be installed through center of the starter track. Ensure that every fastener location is sealed generously and completely with silicone.

8



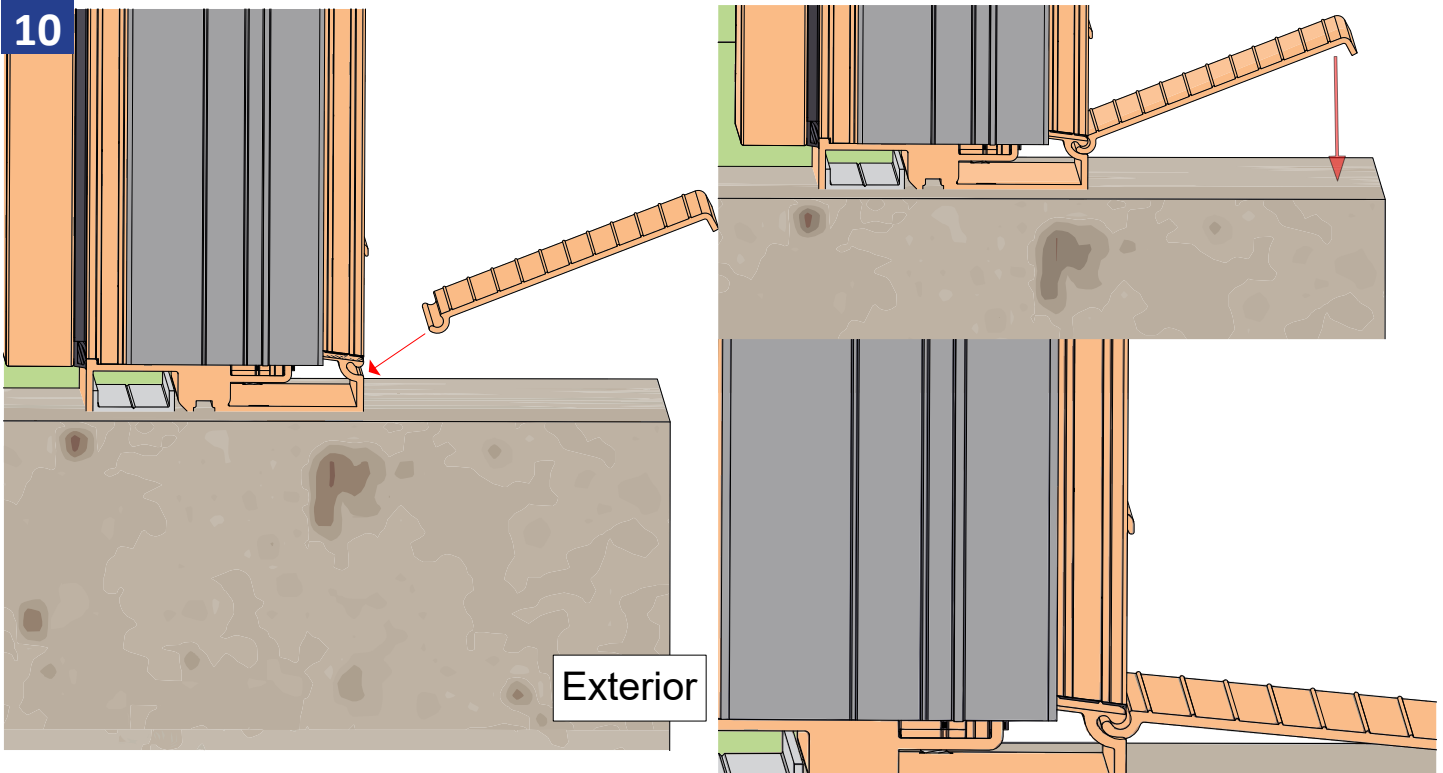
Just before installing the door in the opening, apply two 3/8" continuous beads of silicone across the entire width of the rough opening threshold. Then apply two 3/8" continuous beads in the corners that extend the depth of the unit. Center and set the door frame into the rough opening, making sure there are equal gaps on both sides of the door frame.

9



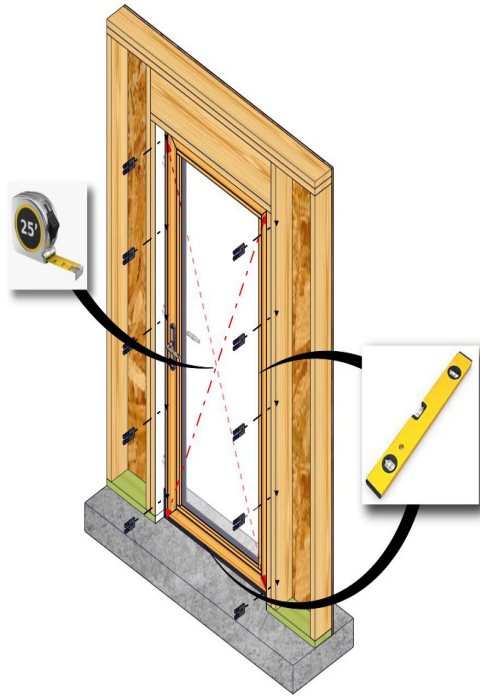
Install the door over the pre-set starter track as shown above.

10



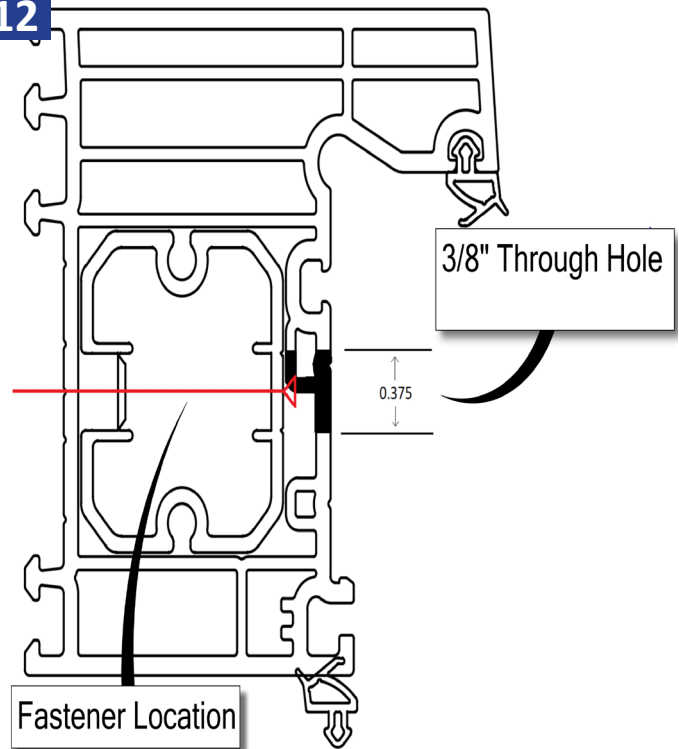
Following the steps above, install the frame threshold ramp.

11



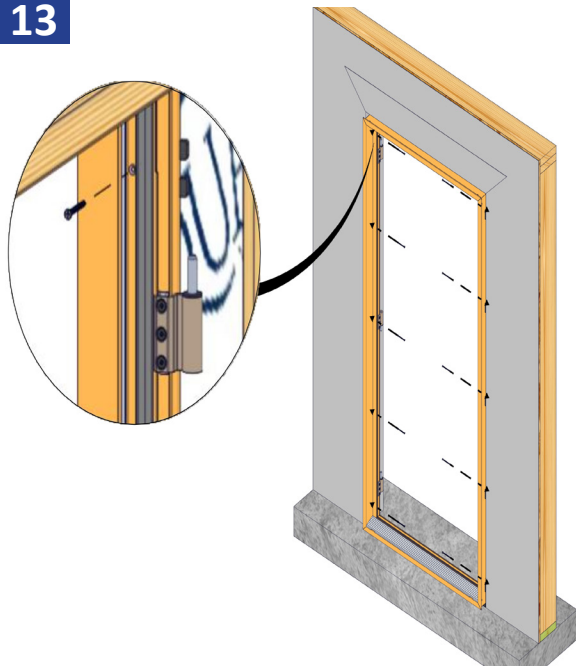
From the interior, square the frame in the opening by installing shims between the jambs and framing.

12



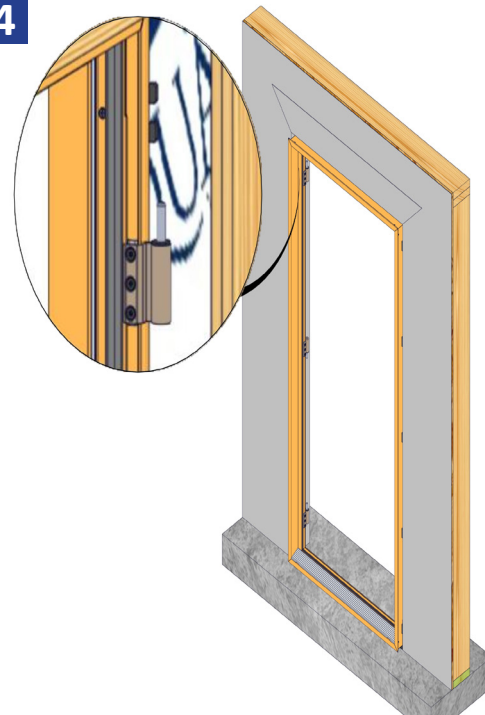
Horizontal cross-section of frame, drill a 0.375 through-hole in the first layer of vinyl (shown in black). The fasteners will then be drilled through the reinforcement into the rough opening (shown in red).

13



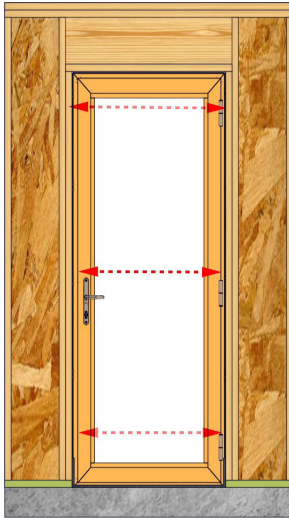
Drill a 0.194" clear hole through the jambs in the exterior track per anchorage calculations. **Quaker Window Products does not supply or claim liability for anchorage/fastener calculations. It is the installer/client's responsibility for structural adequacy of the anchorage and fasteners.**

14



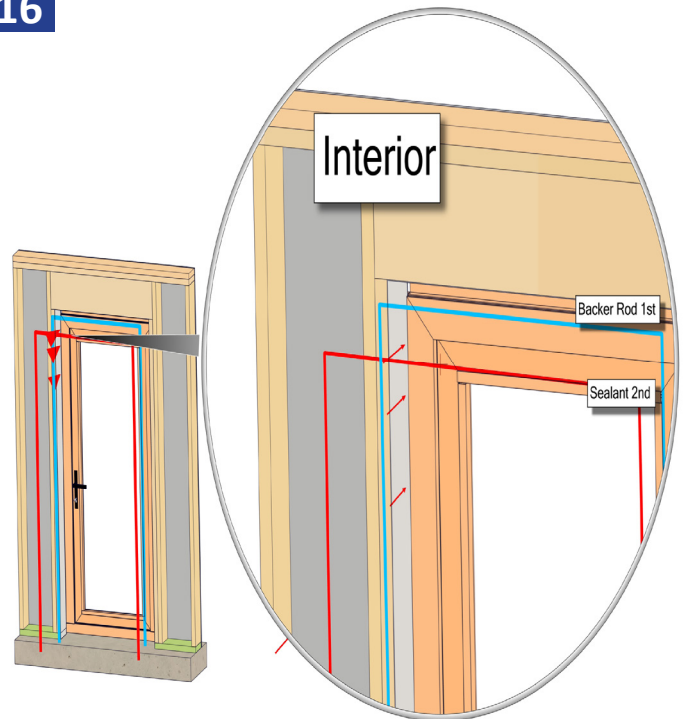
Install and fasten the door unit in place using fasteners per anchorage calculations (by others). Always follow the anchorage calculations and fastener/anchor manufacture's guidelines for proper edge distance, load capacity, and installation techniques. Typically, a #8 screw 4" from each end and 14" on center at head and jambs.

15



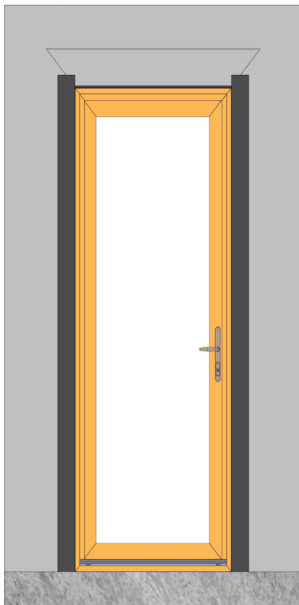
Verify the door is square, level, and plumb. Check the spacing around the door at the top, middle, and bottom to make sure the door is not over shimmed. See hinge and lock adjustment guides if adjustments are needed.

16



Press the backer rod (blue) into the space between the building condition and the frame. Then apply a continuous bead of sealant (red) in the same space over the positioned backer rod, tool in sealant. Ensure that the space between the frame and the building condition is completely sealed.

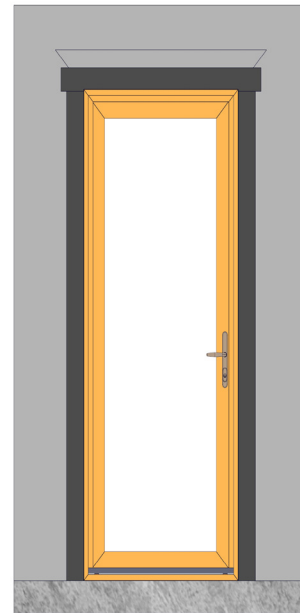
17



If not using positioning fins, skip steps 17-19.

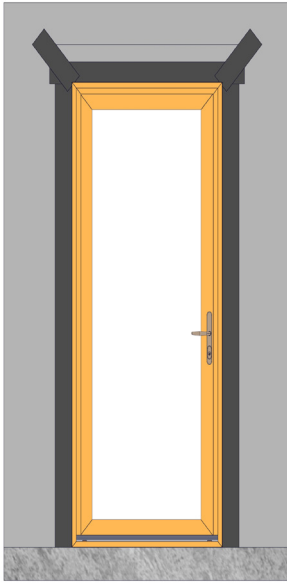
Flip down upper flap of WRB so it lays flat across head flashing, then trim 1" - 2" above the door opening. Cut two pieces of flashing tape for jamb flashing extending 1" above head. Remove release paper and press tightly along sides of door frame.

18



Cut a piece of flashing tape for the head flashing, which extends beyond outer edges of jamb flashings. Remove release paper and adhere to exposed sheeting or framing members.

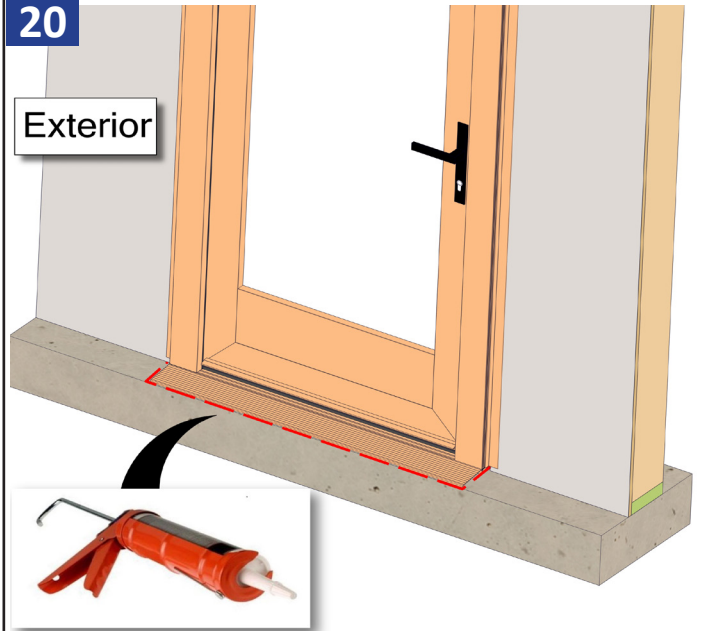
19



Tape along all cuts in WRB and across head of the door with flashing tape.

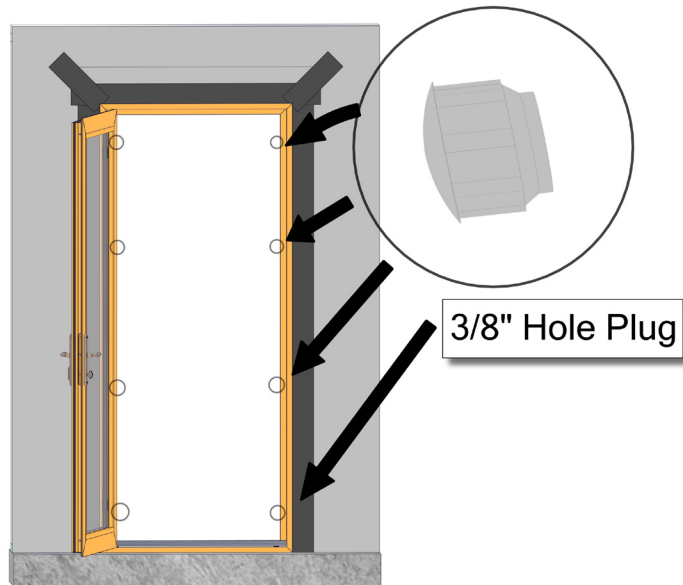
20

Exterior



Apply sealant around the perimeter of the unit. At the threshold ramp, apply sealant intermittently to allow for drainage.

21



Install 3/8" hole plugs.