



ARCHITECTURAL SERIES

Commercial Windows and Doors



Architectural Solutions for Every Project

www.QuakerCommercialWindows.com

Satisfying Your Vision for more than 75 years.

Since 1949, commercial building industry professionals have consistently turned to one company to fulfill their architectural designs. That company is Quaker Commercial Windows & Doors.

At Quaker, we want the same thing as you: To make architectural visions come to life.

This dedication to ensure your success -- and Quaker's success too -- is reliant upon our ability to evolve and adjust to the ever-changing landscape of the commercial building industry. Our passion and vision drive us to stay the course with the elements that have made Quaker a leader in the industry:

- Continuous Product and System Design Innovations
- Employing State-of-the-Art Equipment in All Facilities
- Integrity Throughout All Manufacturing, Quality, and Delivery Processes
- Offering Value Within Every Product and Service we offer
- Implementation of Green Enrichment Principles
- A Firm Commitment To Always Improve. Always.



Upper Division Grad Housing
Oregon State University
Corvallis, OR
Contractor: Fortis Construction
Architect: Mahlum Architects
Commercial Distributor: Beacon Bldg. Products
Products: V300 Series Single Hung and Fixed
Expected completion date: Late 2024

Render Credit: D Architectural Renderings

About Quaker

Innovation. Experience. Quality. Values.

OUR MISSION: Quaker is dedicated to offering innovative solutions, world class customer service and the highest quality product solutions for the commercial building market.

When Marge and Harold "Bud" Knoll (top right) started Quaker Venetian Blinds Company in 1949, little did they know that their new company would ascend to being a leader in the window and door industry as quickly as it did.

And now, more than 7 decades later, Quaker finds itself stronger than ever -- and still leading the way.

Today, led by a 2nd and 3rd generation ownership team, and bolstered by more than 1,600 employees across 3 campuses, Quaker can lay claim to being the fastest growing window and door manufacturer in the United States.

Our continued growth is fueled by an extensive window and door selection that has no equal.

- LC to AW-rated products
- Products for New Construction and Retrofit
- Commercially-designed Aluminum, Vinyl and Wood Clad Windows and Doors

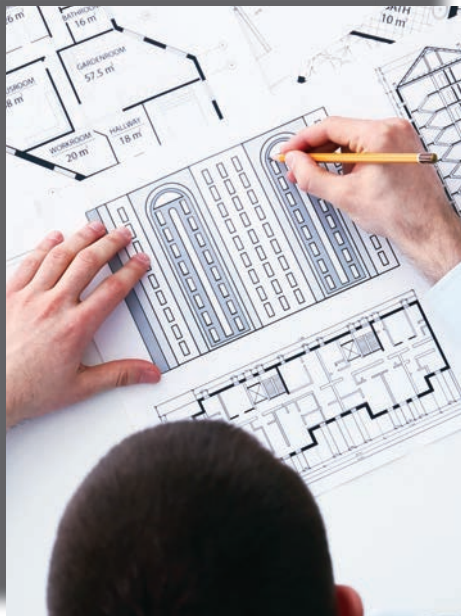


Support Services

from start to finish

Quaker's expertise and support services are unmatched in the industry. While every project is distinct, Quaker offers in-house processes which consistently cover every detail. These fool-proof procedures ensure your project and our products are a perfect match.

- Quaker has a dedicated in-house commercial sales team with more than 150 years of industry experience
- Quaker's team will assist with every facet; design development, budgetary aspects, and project management



PROJECT AND SPECIFICATION REVIEW

How many stories are in the building?
Where is it located?
How large are the windows?
These and other important questions must be answered before moving forward.



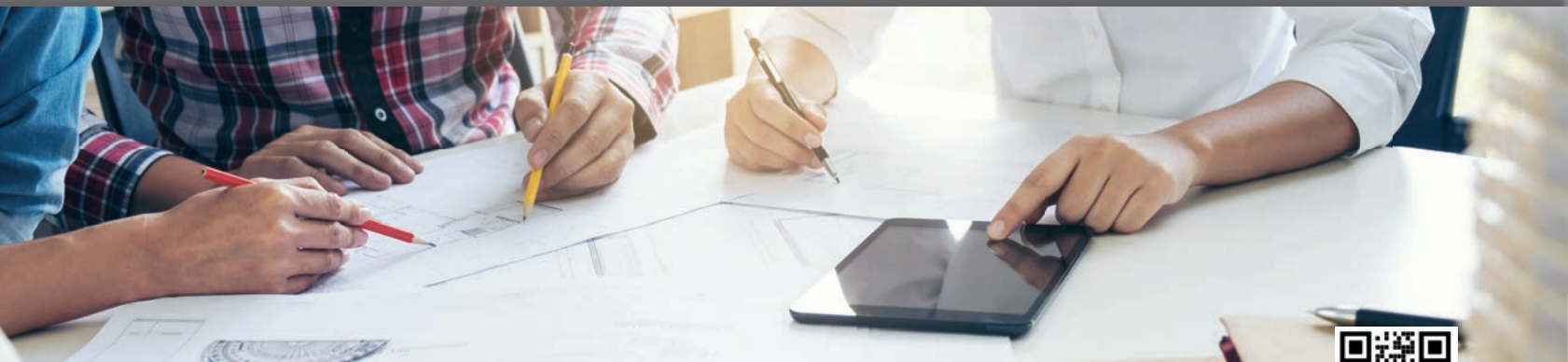
ENGINEERING & DESIGN ASSESSMENT

After evaluating every component making up your project, our professional engineering expertise is put to work, as we carefully calculate customized solutions to best meet your spec's requirements.



LOCAL AND ARCHITECTURAL SALES SUPPORT

Quaker's Sales Representatives, many with 25+ years of knowledge and industry pedigree, have a vested interest in working beside you...not from afar. If you have questions, they want to answer them. If you have a concern, it's their concern too.



Find out why Quaker's architectural support and service will help your project from start to finish.



Products

for every project type

With nearly 100 different windows and doors from which to choose, Quaker's product offering is as diverse as you'll find. Add in thousands of options, and Quaker has every project, every market segment, and every spec covered.

		Casement	Project Out	Hung	Horiz. Slider	Fixed	Sliding Door	Hinged Door
B-SERIES COMMERCIAL BLAST TESTED ALUMINUM WINDOWS	Windows achieving test criteria set by the Dept. of Defense Minimum Anti-Terrorism Building Standards	AW-70		AW-50		AW-70		
C-SERIES COMMERCIAL ALUMINUM WINDOWS WITH OPTICORE TECHNOLOGY	All aluminum windows containing Quaker's patented OptiCore™ technology	AW-100 AW-70	AW-100 AW-70			AW-100		
E-SERIES COMMERCIAL ALUMINUM WINDOWS	Windows that successfully merge energy-efficient designs with top structural qualities	AW-70	AW-100	AW-50 CW-50	AW-50 CW-50	AW-100		
H-SERIES COMMERCIAL ALUMINUM WINDOWS	Designs and sightlines to accurately replicate windows for historical renovation projects	CW-90	CW-90	AW-60		AW-100 AW-90		
IMPACT WINDOWS AND DOORS	Windows specifically designed to meet ASTM 1886 (Large Missile Impact - Level D) testing requirements	AW-70 CW-50	AW-70 CW-80 CW-50		AW-50	AW-70 AW-50 CW-50	AW-50	AW-50
K-SERIES COMMERCIAL ALUMINUM WINDOWS	Windows from Quaker's product offering that have remained staples for several decades				CW-40	CW-50		
M-SERIES COMMERCIAL ALUMINUM WINDOWS AND DOORS	Superior structural integrity meets modern, progressive design and "green" efficiencies	AW-70	AW-70			AW-70	AW-40 CW-50	AW-70 AW-50
T-SERIES COMMERCIAL ALUMINUM WINDOWS	Traditional with a capital T. - Traditional operation. - Traditional designs. - Traditional sightlines.	AW-70	AW-70	AW-50		AW-70		
V-SERIES COMMERCIAL VINYL WINDOWS AND DOORS	uPVC vinyl windows and doors specifically developed for the Commercial building industry	AW-75 CW-50 LC-35 R-40	AW-75 CW-50 LC-35 R-40	CW-50 LC-35 R-40 R-35	CW-50 LC-35 R-40	AW-100 CW-50 LC-35 R-40 R-35	LC-40 R-50	CW-50
W-SERIES COMMERCIAL WOOD CLAD WINDOWS	Wood interior/aluminum exterior windows containing Quaker's patented OptiCore™ technology	AW-70	AW-70			AW-100		

All ratings listed are NAFS certified. Periodic re-certification testing is required thus data shown may vary slightly.

New Construction

Case Study

Saint Teresa de Calcutta Villa | San Diego, CA



Credit: Joseph Wong Design Associates / jwdainc.com



- **Developer:** 14th & Commercial CIC, LP and Father Joe's Villages
- **Contractor:** Level 10 Construction LP

- **Architect:** Joseph Wong Design Associates
- **Glazing Contractor:** Lunstrum Windows

Saint Teresa de Calcutta Villa was built to provide housing for previously homeless individuals and families. Versatile M600 Aluminum Series were the selection.

- Some units utilized a continuous frame design incorporating Casement, Fixed, and Louvers, saving on-site labor.
- Units with multiple Fixed windows were teamed together using a structural stacking mull.
- Limit travel WOCDS were added for safety purposes
- A custom color -- Silver Metallic -- was the developers' choice.
- An upgraded 2605 finish was employed since San Diego Bay lies just ½ mile away, and the Pacific Ocean just a mile further.
- With plenty of SoCal sun, a custom glass package containing Azuria® solar-cooled and Solarban glass was developed specifically for the project.
- Quaker's products assisted the project in attaining LEED Gold status.

Opening in 2022, veterans, people with disabilities, seniors, and more now call the St. Teresa de Calcutta Villa their home.



www.QuakerCommercialWindows.com

Retrofit Case Study

Maunakea Tower | Honolulu, HI

- **Owner:** Komohale Maunakea Venture LP
- **Contractor:** Hawaii Dredging Construction Co.
- **Architect:** Alakea Design Group
- **Glazing Contractor:** Diamond Glass & Metal LLC

Built in 1977, Maunakea Tower provides affordable housing to the city of Honolulu. A large renovation of the 32-story building began in 2023, with window replacement a huge part of the effort. Quaker's E-Series windows checked all the boxes.

- The building contains many different types of windows: Casements, Project-Outs, Horizontal Sliders, and Fixed. Quaker's E-Series has all of those.
- Casement windows met egress and ADA requirements.
- Because most of the openings being replaced contained as many as 6 window units, either side-by-side or stacked -- or both in some cases -- structural mull systems were an absolute necessity to ensure proper windload resistance, on every floor.
- 4x4 post mulls and special corner post mulls added to Quaker's ability to be a one-source supplier.
- Client was looking for an anodized Dark Bronze finish. Quaker offered something even better. A painted Dark Bronze with a 2604 finish that resembles anodized. Quaker's "Resembles" colors offer 4 distinct advantages over traditional anodized: lesser cost, consistent color appearance, shorter lead times, and a longer warranty.
- All windows were palletized and loaded smartly into shipping containers for efficient delivery between the mainland and the Island of Oahu.

Full completion of the project is expected by the end of 2024.



For retrofit success, Quaker has the windows and doors you need right here.

Credit: Standard Communities / standard-communities.com



Historical Replication

Case Study

Lawson House | Chicago, IL



Credit: Jack Crawford / Chicago YIMBY

- **Developer:** Holsten Real Estate Dev.
- **Contractor:** Walsh Construction
- **Commercial Dealer:** Auburn Corporation
- **Original Architects:** Perkins, Chatten and Hammond

At 24-stories, this former YMCA building is a magnificent sight in Chicago's Near North Side area. Built in 1931, it provided housing and services to men of all ages and backgrounds for decades. After years of misuse and deterioration, developers began a \$120 million restoration project in 2022. Quaker's H-Series windows fit perfectly into the plan.

- H655 Series Aluminum Single Hung and Fixed windows matched the originals and also met NPS criteria.
- Quaker was able to develop a custom panning die to replicate the window exterior.
- With 40 "Quick Pick" colors from which to choose, developers found what they were looking for -- selecting Moss Green which essentially replicated the original look.
- Products were delivered in 5 phases to help contractors with their schedule.
- Quaker's EnergyBasic glass met provisions for thermal efficiency.
- Upgraded pane thickness was added to help control sounds from Chicago's busy streets.
- A custom SDL combination achieved the original window appearance.
- Prestigious LEED Gold status is expected with the help of Quaker's products.

Today, Lawson House has been fully revived, offering residential housing and services to low-income or homeless men and women. The project has been the recipient of awards from several organizations including AIA Illinois, Chicago Building Congress, and Chicago Neighborhood Development.

See why we at Quaker are the recognized historical window experts.



Multi-Family Case Study

Smoky Hollow | Raleigh, NC



- **Developer:** Kane Realty, Williams Realty & Bldg. Co.
- **Contractor:** Clancey & Theys Construction Co.
- **Architect:** JDAVIS Architects
- **Glazing Contractor:** Brinn Glass

Smoky Hollow is the epitome of mixed-use: multiple apartment complexes, intermingled with retailers, restaurants, outdoor and indoor entertainment, and more. The complex was completed in phases over a 2-year period.

- Combinations of Quaker's C605 Aluminum Project-Out and Fixed windows, all within continuous frames, were used throughout.
- For terraces, Quaker's M600 Aluminum Series doors with a low-profile sill were chosen.
- Custom raised SDLs brought a trendy yet traditional appearance.
- Insulating glass was asked to fit two purposes: Low U-Values and High STC. Check and check. U-values were in the low 0.2s. Meanwhile, the STC spec called for a 35 and Quaker delivered easily.
- Quaker brought added value to the table with WOCD devices on all operating window units and tempered glass on every window and door.

The entire Smoky Hollow neighborhood has since brought a new energy to Raleigh's downtown arena.

Mixed-Use Case Study

The Waycroft | Arlington, VA



Credit: David M. Schwarz Architects, Inc.

- **Developer:** 750 North Glebe LLC
- **Contractor:** Clark Construction Group
- **Architect:** WDG Architecture PLLC
- **Glazing Contractor:** Ajay Glass & Mirror

The Waycroft is a unique build, made up of several structures that take up an entire city block. Each building has its own personality and design, but all offer retail and dining to go with residential lofts and apartments

- A mix of Quaker's E600 Aluminum Series windows and M600 Aluminum Series doors were specified.
- Found in one of the busiest areas in Arlington, upgraded pane thickness was used to achieve higher STC values.
- The project achieved LEED Gold status.
- The project called for five custom colors -- Antique White, Sahara Sand, Tractor Green, Herringbone, and Light Brown -- each distinctive to sections of the project. With Quaker's custom color capabilities, this was no issue.
- Each custom color had an upgraded 2605 finish.

The Waycroft, with its broad curve facade, was completed in 2020.

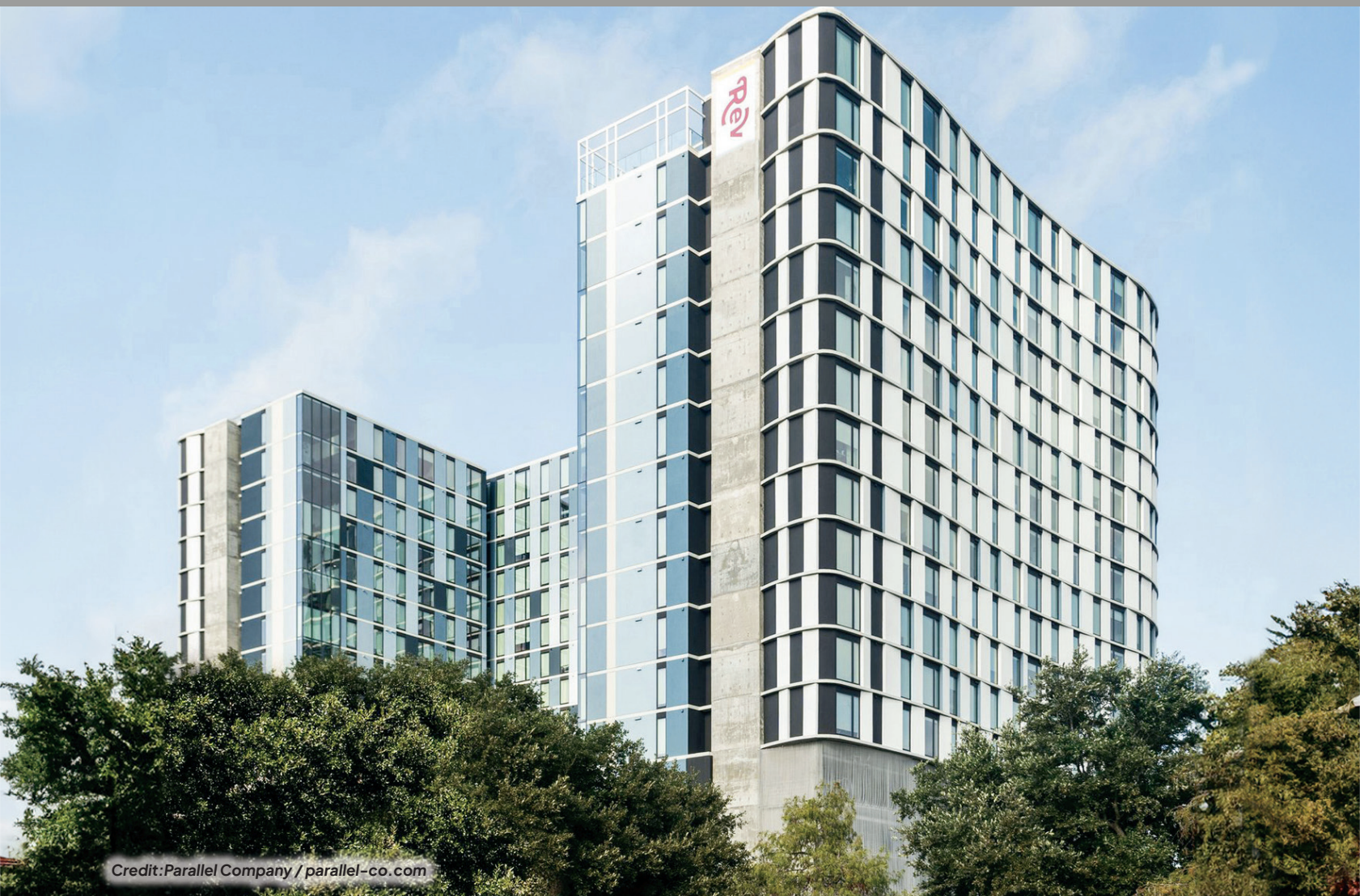


www.QuakerCommercialWindows.com

University/College

Case Study

REV Northgate | College Station, TX



Credit: Parallel Company / parallel-co.com

- Owner: College Station Properties KP6 LLC
- Developer: Parallel Company
- Contractor: Rogers-O'Brien Const.
- Architect: Rhode Partners
- Commercial Window Dist: Binswanger Glass

Just a few minutes from Texas A&M University, REV Northgate is 19-stories of student living within an ultra-progressive design. Quaker's M600 Series Fixed windows were chosen for their formative build as well as their comprehensive performance -- structurally and thermally:

- M600 is a strong performer for taller buildings, boasting an AW-70 rating.
- During the design stage, Quaker provided structural and anchorage calcs to the development team for peace of mind.
- For all-aluminum windows, the M600 Series Fixed windows afforded excellent U-Values (0.30) and SHGC Values (0.24).
- Thicker glass panes added better sound reduction from this busy, college city that has nearly 75,000 students.

Completed in 2023, Rev Northgate is now touted as the tallest building between Houston and Austin.

800-347-0438



K-12 Schools

Case Study

Raymond E. Shaw Elementary School | Millbury, MA



Credit: T2 Architecture

- Owner: Millbury Public Schools
- Contractor: Fontain Brothers, Inc.
- Architect: T2 Architecture
- Glazing Contractor: Chandler Architectural Products, Inc.

Quaker's W605 Series windows were selected for this \$60 million renovation and addition. The school district's vision for windows paired nicely with Quaker's many options and services, including:

- Triple glazing which afforded tremendously low U-Values and Solar Heat Gains.
- Both Project-Out operating units and Fixed units were contained in continuous frame designs, thus allowing for singular unit installs instead of additional and costly on-site mulling.
- Wood interior to match the previous windows.
- A custom exterior color -- Classical Gold -- was requested. With Quaker's in-house, custom color capabilities, we were able to affordably accommodate the client's request.

The project was completed in August of 2022 just in time for the start of fall classes.

Quaker's K-12 experience gets all A's. Learn more about it



Energy-Efficiency

Case Study

The Flin | Tucson, AZ



Credit: The Flin / theflin.com

- Owner/Developer: HSL Properties, Inc.
- Contractor: HSL Construction Services
- Architect: Eglin + Bresler Architects
- Glazing Contractor: Glass Unlimited

This upscale, urban living apartment complex embodies southwest feel and style. The Flin development team, which began this project in early 2020, came to Quaker with questions. Quaker had the right answers -- and the right products in our K200 Aluminum Windows and M300 Sliding Aluminum Doors.

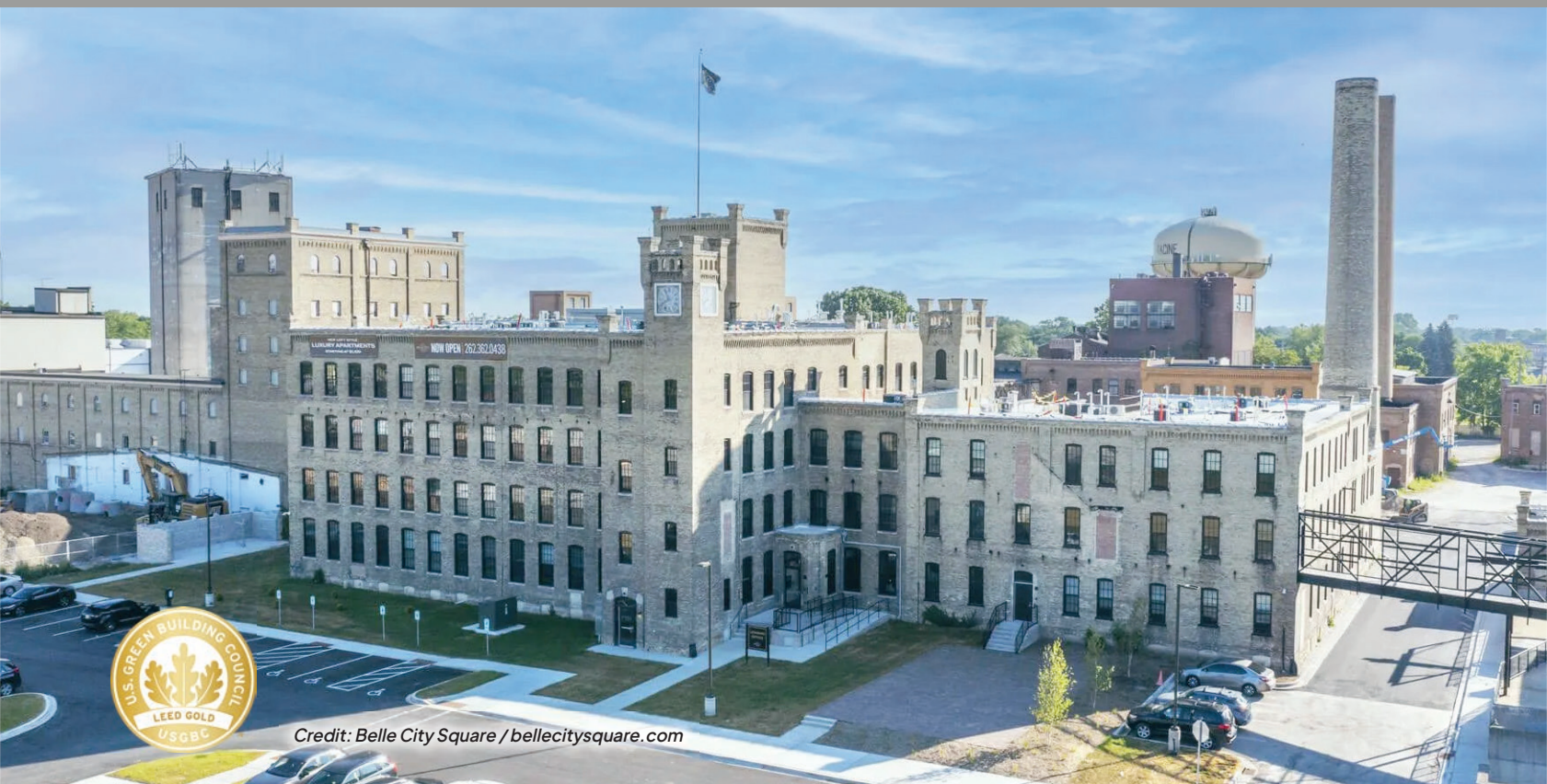
- Horizontal Sliding and Fixed Windows met design specs
- Sliding Doors, with the capability of going 8' tall, were exactly what developers wanted.
- In the southwest, energy values are atop every list. Quaker's K200 windows furnished U-Values as low as 0.31 and SHGC values as low as 0.25 -- excellent numbers for all-aluminum windows.
- Local windloads called for varying insulating glass and glass pane thickness, with I.G. up to 1", and glass panes up to 1/4" panes for upper floors.
- Custom bent break metal was supplied for head and sill flashing on all windows.
- Structural mulls were shipped loose to allow for on-site assembly of 125" multi-window units.

The Flin, with more than 600 Quaker windows and doors and 244 apartments/lofts, was completed in 2022.

LEED

Case Study

The William | Racine, WI



- **Owner/Developer:** J. Jeffers & Company
- **Contractor:** CG Schmidt

- **Architect:** AG Architecture
- **Commercial Dealer:** Insulation Technologies, Inc.

The William is one of several buildings within the Horlick Complex, which was built during the 1880s by William and James Horlick to house the making of their newly-invented product known as malted milk. Developers have transformed the complex into an apartment community. Quaker's H-Series windows proved to be a big part of the revival in many ways.

- Nearly all of the building's original hung windows were designed with mini-arches at the top. To accurately replicate this design element, Quaker supplied arched break metal, satisfying requirements set forth by historical overseers.
- With some Single Hung windows nearly 100" tall and more than 30 square feet in size, Quaker supplied heavy-duty Class 5 balancers for dependable usage.
- A custom panning die was developed to keep the exterior architecture appearance intact.
- Custom SDLs to mimic the original window's grid system.
- In a small portion of the building, vinyl windows were utilized. Matching colors across vinyl and aluminum windows was a concern but Quaker's in-house vinyl painting facility removed all apprehension.

After a long, meticulous refurbishing process that included 349 Quaker historical windows, The William was completed in 2023, gaining LEED Gold status along the way.

Quaker windows can be found in nearly every building on the Horlick campus, now known as Belle City Square. That includes two newly constructed 5-story apartment buildings on the western edge of the property.

Senior Housing/Assisted Living Case Study

Anthology of King of Prussia Senior Living | Wayne, PA



Credit: Anthology Senior Living

- **Developer:** CA Senior Living
- **Contractor:** Wohlsen Construction
- **Architect:** Perkins Eastman
- **Commercial Window Distributor:** G2 Architectural Products

This senior living facility is a perfect example of putting aside outdated perceptions of commercial vinyl. This building's 11-story design would have traditionally gravitated toward aluminum windows. However, Quaker's V300 Series takes vinyl windows to a higher level, which is why it would become the basis-of-design for this project. There were several reasons why.

- The V300's CW-50 rating was far and away better than the LC-50 rating originally spec'ed.
- Twin and quad units, using structural mull systems, were factory mullered to save jobsite labor costs and time.
- Limit stop hardware was added for safety purposes.
- Both V300 Project-Out and Fixed models delivered extremely impressive thermal values. On average, U-Values were around 15% lower than what original specs called out. Solar Heat Gains were even better, with values as much as 32% lower than specified.

Anthology of King of Prussia Senior Living, filled with 1300+ Quaker windows, was completed in early 2021.

Affordable Housing

Case Study

Twin Parks Terrace | Bronx, NY

- **Developer:** Settlement Housing and Joy Construction
- **Architect:** D A N O I S Architects
- **Contractor:** Joy Construction

Twin Parks Terrace, part of the New York City Housing Authority, is a 14-story mixed-use facility, containing more than 180 residential units plus ground floor retail and a large community space.

Quaker's long history of working with local and state housing authorities across the country always gives us a leg up in knowing what products and options are the most beneficial, budget-conscious, and code-compliant.

More than 500 windows from Quaker's E600 Series were a large part of the project, and Quaker's expertise and special services proved valuable.

- Along with a standard project-out casement, Quaker's E600 Series possesses a project-in model, which was necessary to meet NYC code.
- NYC law requires that buildings housing children 10 years or younger must contain window guards which keep the window from opening more than 4 1/2" in any direction. Our Limit Travel devices, which are compatible with many of our products -- including the E600 -- are built specifically for this purpose and generally open no more than 4".
- Saving on-site labor and time, Quaker supplied louvers already built into the window units. The louvers match up perfectly with the HVAC systems in each apartment.
- Thicker glass panes were incorporated to suppress street noise.
- E600's AW-ratings (AW-100 for Project-In & Fixed, AW-70 for Casement) meant an extremely strong performance from every window -- from the bottom story all the way to the top.
- Satisfying NYC Engineering Calcs plus meeting a required field test proved to be no obstacle for Quaker.



Credit: Settlement Housing Fund

Completed in 2023, Twin Parks Terrace now boasts itself as one of the NYCHA's newest members.

Entertainment/Hospitality

Case Study

Dollywood Heartsong Lodge & Resort – Pigeon Forge, TN



- **Developer:** The Dollywood Company
- **Architect:** Nelson Worldwide Architecture

- **Contractor:** D & S Builders LLC

Amid the Appalachian Mountains lies one of the top attractions in America: Dollywood Park. More than a dozen high-end lodging choices dot the immediate area around Dollywood. One of the newest is Dollywood Heartsong Lodge & Resort. Nearly 400 of Quaker's M600 Series windows and M300 Series sliding doors harmonized beautifully into the resort's design.

- With annual temps that reach around 90° in the summer and get well below freezing in the winter, a glass package with year-round energy efficiency was necessary. Quaker's Energy 3S was the answer, with its all-around capabilities to deliver excellent thermal performance.
- Wind load calculations were assembled by Quaker to assure the windows/doors were structurally sound at the elevations presented by the project's location.
- 1/4" tempered glass panes brought value on 2 fronts: reduced sound transmission, plus increased safety.
- A custom color was originally specified but Quaker, with more than 40 "Quick Pick" colors available, was able to find an existing color from our collection (Earthtone) to save the client any additional charges.
- Continuous frame assemblies, in lieu of multiple window units mulled together, made it easier for installers. It also eliminated extra framing, giving visitors a more expansive view of the picturesque, mountainous surroundings.

Dollywood Heartsong Lodge & Resort, with its rustic contemporary design, opened its doors to visitors in late 2023.

Medical Case Study

V.A. Battle Creek Medical Center | Battle Creek, MI



Credit: Ginger Rose Sales

- Owner: U.S. Dept. of Veterans Affairs
- Glazing Contractor: Battle Creek Glass
- Contractor: Northview Enterprises
- Commercial Window Distributor: G2 Architectural Products

Battle Creek V.A. Medical Center is a multi-building complex that offers services to more than 44,000 veterans annually. A large renovation of the 100 year old campus included the replacement of all windows in 9 structures. While each building had much in common, each structure posed specific window challenges. Quaker had the right product solutions for each.

- T500 Series hung units were found in every building, providing a traditional look that mirrored the originals.
- T600 Series Project-In (aka Hopper) models were found in six of the structures, offering quick and easy venting to basement levels.
- In four buildings, geometric shaped windows were replaced. Quaker's in-house geometric capabilities allowed us to manufacture half rounds, arched units, circles, soft arch eyebrows, even Arched Single Hung units without outsourcing. This kept lead times in check and pricing in line.
- In all but one building, combination units were found. This required structural mulls -- both horizontal and vertical -- to maintain high-level integrity for each opening.
- Glass in all buildings was customized to meet spec. That included a Grey Tint (for aesthetics), 1/4" panes (for high STC), and Tempered fabrication (for safety).
- Thicker glass panes meant heavier sashes. Heavy-duty Class 5 balancers in all hung units made operation smooth and easy.
- In approximately 40% of all hung windows, Insulated Q-Panels were added in place of I.G., allowing for A/C window units to be installed.
- Subills and receptor accessories procured a more stress-free install process.
- Limit travel devices were implemented on all operating units for added safety.

Windows were delivered over a 13-month period covering 2020-2021. Full completion of the project was achieved in 2022.



www.QuakerCommercialWindows.com

Impact Case Study

Hyatt Place at the Markham | Gulfport, MS



• **Owner & Contractor:** LLI, LLC

• **Commercial Window Distributor:** Exterior Solutions

Hotel Markham opened in 1927. After being ravaged by Hurricane Katrina in 2005, the structure sat empty for 14 years until developers began renovations in 2019. It re-opened soon thereafter under the Hyatt Place hotel brand. Because of its location on the Gulf of Mexico, The ownership group requested vinyl but also need impact-rated windows that would be in accordance with Mississippi Building Codes. Quaker had the solution: The V700 Series.

- Quaker's V700 Series is a rare vinyl window that meets stringent ASTM 1886 (Large Missile Impact - Level D) testing requirements.
- Nail fin anchorage system met Impact requirements.
- Fixed units were used throughout. However, all were made with a faux horizontal meeting rail to simulate a single hung window appearance.
- White uPVC vinyl matched the Markham's facade.

With nearly 180 windows installed, and all refurbishments complete, the hotel is once again a player in Gulfport's vibrant downtown district.

Military/Government Case Study

P403 Recruit Reconditioning Center | Parris Island, SC



- Owner/Developer: US Navy
- Contractor: Korte Construction

- Architect: Korte Design, Inc.
- Glazing Contractor: East Moline Glass

This was a 4-phase military project. Phase I was the partial demolition of the existing 2-story reconditioning center. Phase 2 consisted of renovation work on what wasn't demolished. Phase 3 was an addition to the existing building. Finally, Phase 4 brought a new single-story addition adjacent to the existing barracks. Quaker's blast-tested B-Series windows were the obvious choice for all window requirements on the project:

- All windows -- Fixed and Single Hung -- had to include special sealants, fasteners and glazing stops.
- Increased glass pane thickness was a must and Quaker delivered, in accordance to GSA Federal Guidelines.
- All Fixed units for the project were spec'ed to contain wide, vertical muntin bars to simulate a Single Hung window appearance. Quaker, with our large muntin assortment, easily met the request.

Marine Corps Recruit Depot/Parris Island trains and re-trains nearly 20,000 recruits every year, assisting those who have been injured during their training as well as recruits who have been unable to pass mandatory physical fitness testing.

Vinyl Case Study

The Fred | Edina, MN



- **Developer:** Solhem Cos. & Lumen Design & Development
- **Contractor:** Weis Builders

- **Architect:** BKV Group
- **Commercial Window Distributor:** Prosource Building Supply

For developers of this 400+ unit multi-family structure, Quaker and our large array of products were the clear-cut choice when it came to windows and doors. Quaker's V300 Series uPVC vinyl windows and V250 Series uPVC vinyl Sliding Doors outperformed notable competitors by fulfilling all specifications. Meanwhile, Quaker M300 Aluminum Sliding Doors and M600 Aluminum Hinged Doors served purposes necessitated by their locations within the building.

- With a rating of CW-50 for all window units (even 2- and 3-window groupings), the desired structural minimum rating of LC-40 was comfortably outdistanced.
- Quaker exceeded the energy performance criteria specified which included separate U-Value and Solar Heat Gain values for windows and doors.
- All products easily topped the requested STC and OITC rating minimums of 25 and 22 respectively
- Operating windows met the specified Forced Entry Resistance Factor
- When apprehension was raised about Quaker's uPVC vinyl sliding doors not handling expected windloads on the top story, an alternate was suggested -- our aluminum M300 Series sliding doors -- and eventually agreed upon. No secondary supplier was necessary as Quaker had the solution in our back pocket all along. The aluminum color even matched the uPVC vinyl.
- M600 Series hinged doors sported a low-profile sill for ADA purposes

The first sections of The Fred opened in mid-2023. The remaining portions were completed by the end of that same year. All told, the project sports more than 2,200 Quaker windows and doors.

Multi-family projects often require multi-product solutions. Quaker has every angle covered.

800-347-0438



Wood Clad

Case Study

The Howard on Central | Bentonville, AR



Credit: The Howard / thehowardbentonville.com

- **Developer:** Newell Development
- **Contractor:** The Dave Grundfest Company
- **Architect:** Hufft Architecture
- **Commercial Window Distributor:** Ditta Enterprises

The need for more multi-family housing in the ever-growing Northwest Arkansas area was seen as an opportunity by developers. Thus was born The Howard on Central. Wood clad windows were the preference for all parties involved and Quaker's offering quickly jumped to the top of their list for an abundance of reasons.

- With LC-ratings for both the Casement and Fixed models (60 and 50 respectively), the windows were natural fits for the project's scope.
- Some Fixed units were nearly 42 sq. ft. in size but this was not an issue as Quaker merely added beef to the glass pane thickness, going as high as 1/4" on the largest units.
- A 6 3/4" jamb depth was necessary since the build included thicker walls. Quaker easily catered.
- Safety was a key issue and Quaker had the answers: For operating units, limit travel devices were factory-installed. Meanwhile, all Fixed units contained tempered safety glass.
- Clients chose Resembles Dark Bronze (Light Range) for the exterior color. Quaker Resembles colors offer an anodized appearance without the long lead times, higher cost, and uneven appearance that true anodized brings. Even the Resembles finish warranty is better.
- On the interior, Quaker's pre-painted white saved the contractor money and numerous labor hours on finishing costs. Quaker even filled all nail holes.
- Screens for all operating units were packaged and shipped separately to minimize possible damages en route.
- Extruded exterior aluminum, with a powder-coat 2604 finish, will save the project owners maintenance time/money in the long run, unlike full wood windows.

The Howard on Central was completed in 2022, offering 81 apartments of varying sizes.



www.QuakerCommercialWindows.com

Options

Paint and Finishes

For Quaker Aluminum Products:

- **Finishes:** FGIA 2604 Finish is our standard. Upgrades to a 2605 Finish are available for most colors.
- **Colors:** Choose from nearly 40 "Quick-Pick" possibilities. If that's not enough, our custom color capabilities put any color at your fingertips.
- **Resembles:** Quaker's own painted finishes, developed to perfectly resemble an anodized appearance. Along with the spot on visual match, you also get a better warranty, better price, better lead time and a consistent look on every rail.
- **Anodized:** For specs that require anodized, Class I Anodized is available upon request

For Quaker Vinyl Products:

- **Vinyl Color:** Pure uPVC in White or Sandstone
- **Painted Vinyl:** Available for exterior only, Quaker's painted vinyl affords a color palette which far exceeds traditional expectations because of an ability to produce any custom color you have in mind.
- **Finish:** FGIA 615-05 is the standard finish for all painted vinyl colors
- **High-Performance Laminate Coatings:** Made in accordance to RAL GZ 716/1. Available on the exterior of all vinyl products. For a limited amount of Quaker's vinyl windows, laminate can be added to the interior too.

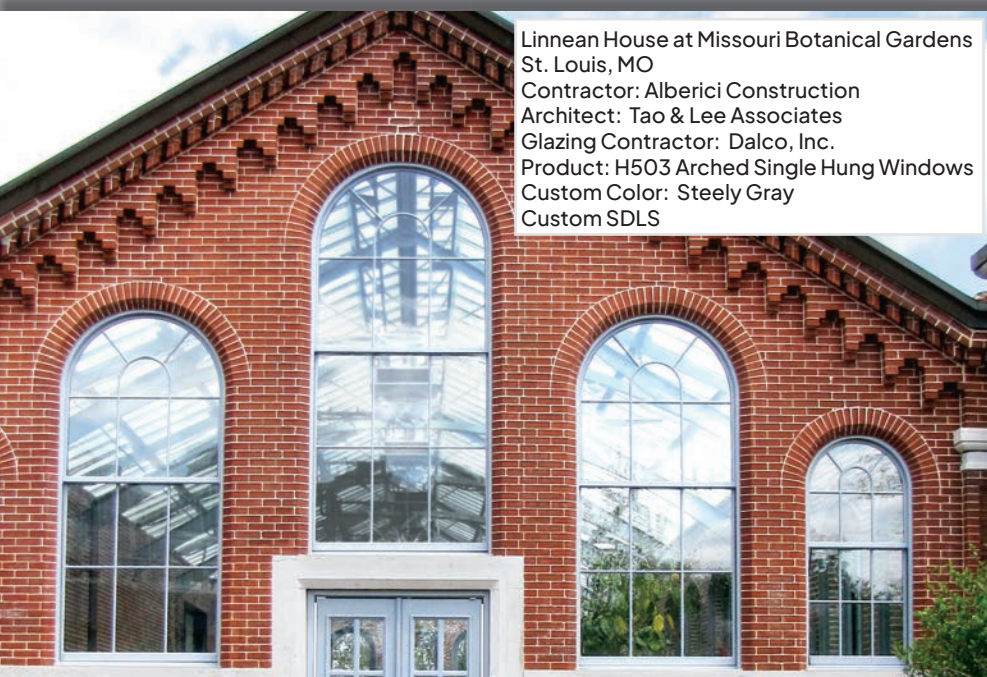
For Quaker Wood Clad Products:

- **Wood Interior:** Treated Pine interior is available unfinished, primed, pre-painted (white, black, or a custom color of your choice).
- **Extruded Aluminum Exterior Finishes:** FGIA 2604 Finish is our standard. Upgrades to a 2605 finish are available for most colors.
- **Choose from nearly 40 "Quick-Pick" colors,** including Quaker's own "Resembles" colors. Custom color capabilities expands the pallet to any color you have in mind.
- **Anodized:** For specs that require anodized, Class I Anodized is available upon request

Paint and Finish Warranties:

- 10 year limited warranty on 2604 paint finish
- 15 year limited warranty on 2605 paint finish
- 5 year limited warranty on Anodized finishes
- 10 year limited warranty on vinyl, painted vinyl exteriors, and laminate coatings
- 10 year limited warranty on wood interior

Go to our website for complete warranty details.



Optional Heat Reflective Color Finishes:

- Only available for windows and doors with aluminum exteriors.
- Diminishes surface temperatures as much as 15% by repelling excessive solar heat, thus reducing the possibility of thermal heat transfer.
- Proven technology adapted to work with windows & doors
- Paint additive works much like Low-E works in glass
- Available with the following Quaker powder-coat colors: Black, Dark Bronze, Textured Black, Textured Dark Bronze, Textured Dark Espresso

Options

Glass & Grids

Pane thickness

- $\frac{3}{32}$ "
- $\frac{1}{8}$ "
- $\frac{5}{32}$ "
- $\frac{3}{16}$ "
- $\frac{1}{4}$ "
- $\frac{5}{16}$ "

I.G. thickness

- 1" (Double pane)
- $1\frac{3}{8}$ " (Triple pane)
- $1\frac{1}{2}$ " (Triple pane)

Glass Types

- Dual Silver Low-E
- Triple Silver Low-E
- Interior Pane Low-E
- Tempered Safety Glass
- Laminated
- Spandrel
- Neat+ Low Maintenance
- Obscure (for privacy)
- Tinted
- Bird Glass

and many others

Some limitations may apply based upon several variables including, but not limited to, the window/door series chosen and requested/required specifications.

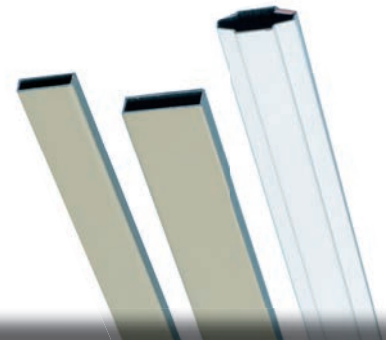
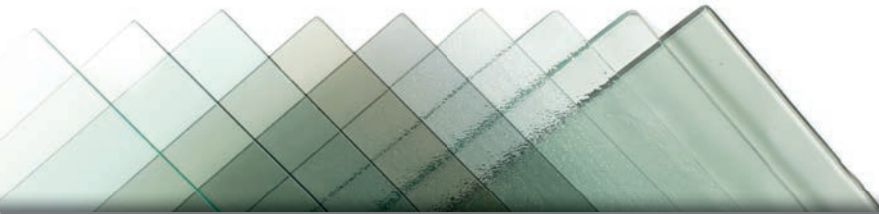
Simulated Divided Lites

- Numerous profiles and combinations available

This is a small sampling of the many SDL grid profiles Quaker has available.

Grids Between the Glass

- Flat or Contoured



565 Hank
Atlanta, GA
Developer: Carter Developments
Architect: Rule Joy Trammell Rubio, LLC
Contractor: New South Construction
Commercial Distributor: Williams Bldg. Prods.
Products: H450 Project-Out and Fixed Windows
Custom Glass, Custom SDLs

Credit: Summerhill Atlanta / summerhillatl.com



www.QuakerCommercialWindows.com

Options and Accessories

Mulls



When it comes to mull systems, performance and confidence go hand in hand. Whether you're stacking units or pairing them side by side -- or both -- Quaker mull systems deliver.

Aluminum mull options:

- Vertical mulls - Up to 3" wide
- Horizontal mulls - Up to 7" tall
- Post Mulls
- Mull Covers - up to 8" wide
- 120° Angle Mull

Vinyl mull options:

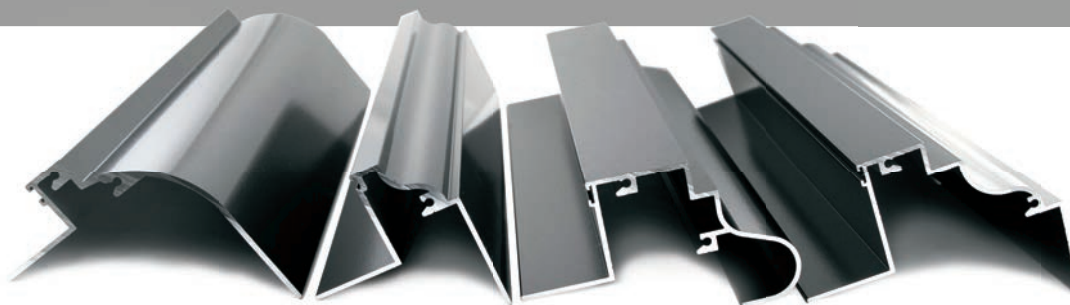
- Vertical mulls - Up to 2" wide
- Horizontal mulls - Up to 2" wide
- Mull Covers - Up to 3 1/2" wide

Wood Clad mull options:

- C- mull
- Space mulls - Up to 4" wide
- 4" Post mull

**Optional Factory Mulling available. Limitations may apply on factory-mull options and usage applications.*

Installation Accessories



- Panning
- Receptor
- Subsill
- Anchor straps
- Interior and exterior trim

Other factory-applied* options and accessories include:

- Louver systems to accommodate HVAC (horizontal or vertical)
- WOCD (Window Operating Control Device)
- Trickle Vent
- Ogee Lugs

and more.

**Some limitations may apply*

Quaker has the accessories to make your installation efficient, cost-effective, and flawless. Explore them all.

800-347-0438



Made in the U.S.A. of U.S. and imported parts



Quaker takes great pride in the fact that all of our windows and doors are designed and made at our manufacturing facilities located in Eldon and Freeburg, Missouri; right in the heartland of the United States of America.

At Quaker, we know that we are ultimately judged by the products we manufacture. Yet our windows and doors are only as good as the components found within them. That's why we are constantly searching coast-to-coast for the best components available. At Quaker, we insist on a higher standard because you do too.

If you would like more information on Quaker's manufacturing partners, please contact our home office.

Eldon, MO - Quaker Commercial Offices and Manufacturing Plant



Freeburg, MO - Headquarters & Manufacturing Plants



Maries County, MO - Manufacturing Plants



www.QuakerCommercialWindows.com

The Quaker Difference: More than meets the eye.

What distinguishes Quaker from all other window companies isn't always in plain sight. It's The Quaker Difference -- tangible and intangible assets working together to form the most sought-after windows in the market.

- It's a standard of craftsmanship and engineering excellence that we build into every product, distinguishing us from all other window companies in America.
- It's shying away from testing at only entry-level, gateway sizes. Instead, we test using exaggerated and even maximum sizing. This ensures the entire scope of a product's sizing will meet the advertised rating.
- It's our "can-do" attitude toward custom projects. Never is a job too custom for Quaker. Our options and accessory choices allow us to do what others can't.
- It's multiple quality checks implemented throughout the manufacturing process to guarantee a paramount product.
- It's our state-of-the-art powder paint facility, one of the largest in the U.S., which allows us to control the quality and consistency of our finish, unlike manufacturers that outsource their painting. As well, it supports our "green" initiatives by employing environmentally-friendly coatings that emit nearly zero VOCs into the air.
- It's employing thicker glass panes which will both lower the amount of stress cracks and raise your ability to control sound intrusion.
- It's professional manufacturing specialists, some with more than 40 years of window experience, providing unparalleled attention to detail from start to finish.
- It's a sales team fully-dedicated to the commercial building sector, working hard to ensure that the product you need is the product you order.
- It's doing more than just selling windows and doors. It's finding the right product solution for your project.



That's *The Quaker Difference*.



800-347-0438






ARCHITECTURAL SERIES

Find more information on Quaker windows and doors

 www.QuakerCommercialWindows.com

 1-800-347-0438

 commercial@quakerwindows.com



December, 2024 V16