



T500

ALUMINUM SERIES

Single Hung | Fixed



Product Material
Aluminum











Frame Depth
3 1/4"



Rating
Single Hung: AW50
Fixed: up to AW50



East Halls
State College, PA
General Contractor: Penn State University
Contractor: Clayco, Inc.
Comm. Window Dist.: Nittany Bldg. Specialties

 Design Pressure Hung: up to 50 Fixed: up to 50	 U-Value* Hung: .37 - .58 Fixed: .28 - .52
 Air Infiltration Hung: <.30 Fixed: <.10	 SHGC* Hung: .12 - .60 Fixed: .13 - .67
 Water Resistance Hung: 10 Fixed: 10	 CR* Hung: 32 - 41 Fixed: 33 - 58
 OITC^x Hung: Contact Quaker Fixed: Contact Quaker	 STC^x Hung: Contact Quaker Fixed: Contact Quaker

*-Ranges based on multiple Low-E/Argon I.G. combinations
x-Ranges based on multiple I.G. combinations

FEATURES:

- ▶ Architectural grade aluminum frame
- ▶ Thermally-broken framing with pour-and-debridge technology
- ▶ 1" insulating glass
- ▶ Gravity lock hardware on operating model
- ▶ Tall, interior sill
- ▶ Side load Single Hung
- ▶ Two Fixed models: Wide Rail and Narrow Rail
- ▶ With or without fin system
- ▶ 30+ "Quick-Pick" colors, with unlimited custom colors available
- ▶ Standard High-Performance 2604 Powder Paint Finish (an FGIA Specification)
- ▶ Optional Upgrade to 2605 Powder Paint Finish (an FGIA Specification)
- ▶ Single Hung contains Half Screen with extruded aluminum frame
- ▶ Blast-tested

www.QuakerCommercialWindows.com

Information listed is deemed accurate as of date shown. Quaker Windows reserves the right to change or discontinue any product, feature or option without notice.

March, 2025 V2



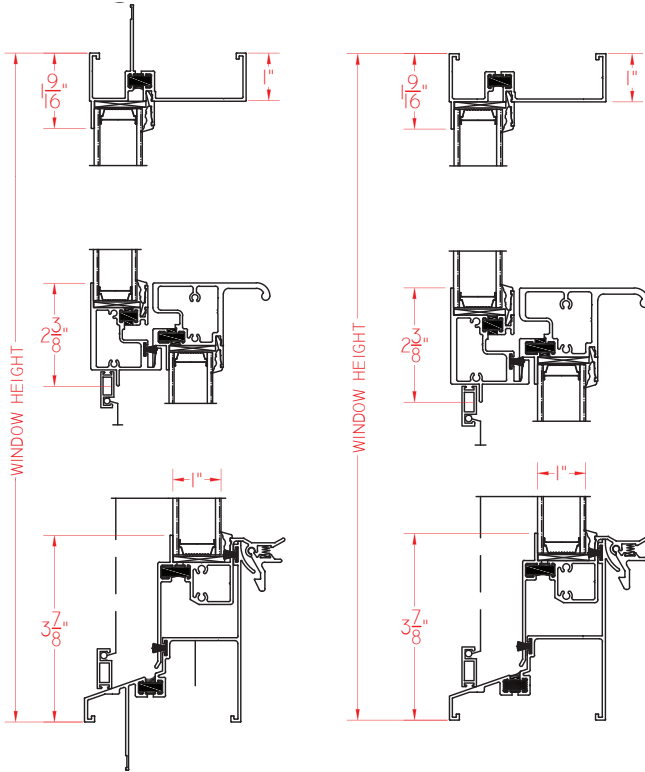
T500

ALUMINUM SERIES

T500 Series Hung (AW50)

Shown with integral nailing fin

Shown without integral nailing fin



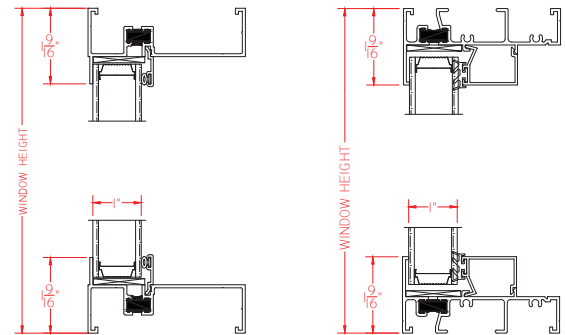
T500 Series Fixed (HC50)

Direct Set

Shown with integral nailing fin

Direct Set Narrow Rail

Shown with integral nailing fin



All ratings listed are NAFS certified.



1201 Walnut St.
Cincinnati, OH
Developer: 1201 Walnut LLC
Contractor: RJ Beischel Building Co.
Comm. Window Dist.: Andy's/Robinson Glass



QuakerCommercialWindows.com
1-800-347-0438
Commercial@quakerwindows.com