

V500 Series 3 1/4" Frame Depth Casement (Project-In)

V500 Series Casement (Project-In)

Features

- ◇ **Material**
 - uPVC vinyl
- ◇ **Commercial Framing System**
 - 3 1/4" main frame
 - Architectural grade uPVC vinyl frame
- ◇ **Enhanced Design**
 - Mitered and welded corners
- ◇ **Glazing**
 - 1" insulating glass
- ◇ **Hardware**
 - Concealed hinges
 - Low profile cam handle hardware
- ◇ **Screen**
 - Extruded aluminum screen frame with BetterVue™ mesh with WaterShed® technology
- ◇ **Colors**
 - White or Sandstone uPVC vinyl (interior/exterior)

Benefits

- ◇ AW-Rating make this the perfect uPVC product for commercial projects

Performance

- ◇ Structural & Thermal (test reports or thermal simulations available upon request)

Model	Casement (Project-In)
NAFS Rating	AW-75
Structural Load P.S.F.	112.78
Air infiltration	<0.10
Water (No Penetration) P.S.F.	12
U-Value (ranges based on multiple Low-E/Argon combinations)	0.19-0.31
SHGC (ranges based on multiple Low-E/Argon combinations)	0.07-0.29
CR (ranges based on multiple Low-E/Argon combinations)	45-79
STC	
OITC	

Due to periodic re-certification requirements, result shown may vary.

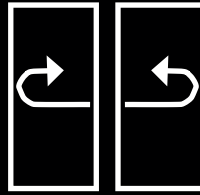
* Acoustic Testing data shown is projected as of 9-1-2025.

Options

- ◇ **Available Configurations**
 - Project-In Casement
- ◇ **Muntin Choices**
 - Internal or simulated divided lites available
- ◇ **Screen**
 - Extruded aluminum screen frame with aluminum wire mesh
 - Extruded aluminum screen frame with sunscreen mesh
 - Extruded aluminum screen frame with stainless steel 0.009" thickness mesh
- ◇ **Glazing**
 - 1 3/8" insulating glass
 - 1 1/2" insulating glass
 - Multiple Low-E and argon glazing choices
 - Triple glazing (Energy TG)
 - Capillary tubes
 - Wide variety of glazing, tinting and thickness options
- ◇ **Panning & Trim Choices**
 - Wide variety of panning, receptor and trim available
- ◇ **Mulling**
 - Wide variety of structural mulls
- ◇ **Colors**
 - High-performance Textured Black laminate (interior/exterior)
 - High-performance Textured Black laminate, Textured Dark Bronze laminate, or Textured Resembles Clear Anodized laminate (exterior only with White vinyl)
 - High-performance Textured Black laminate (interior and exterior)

Our products are tested to the standards of and certified by some of the foremost organizations in the fenestration industry.

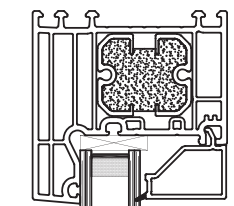
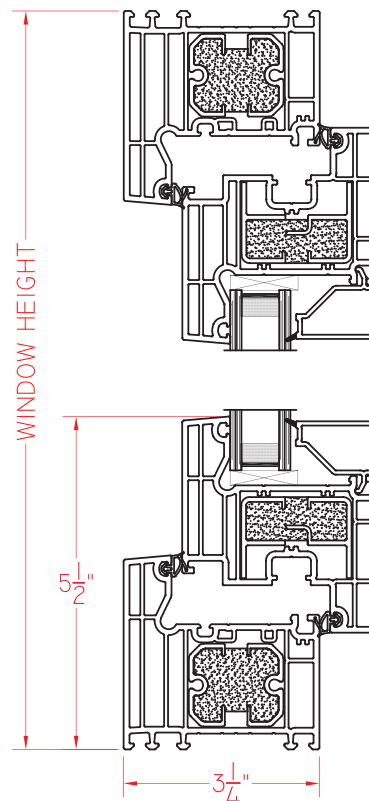
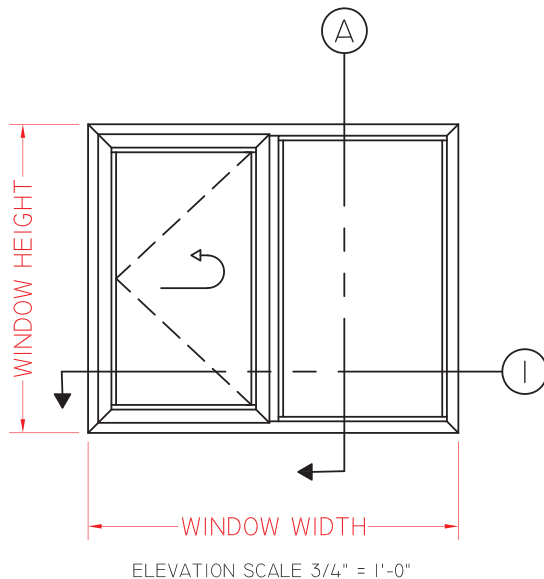
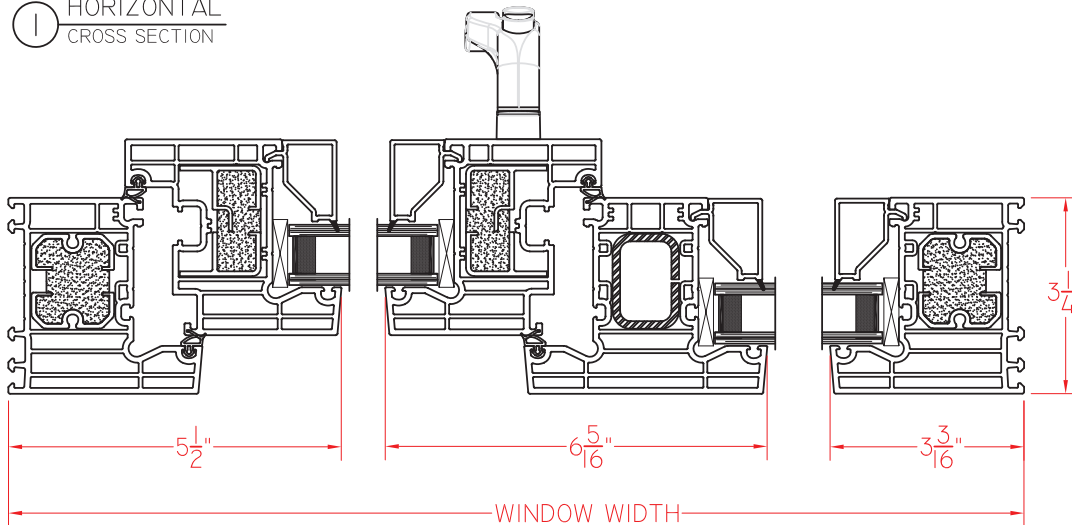




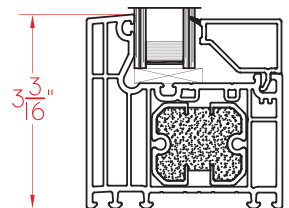
V500 Series Casement (Project-In)

This document contains confidential and proprietary information intended for the private use of Quaker.
© 2016 Quaker Window Products Co., All rights reserved.
Quaker reserves the right to change any/all designs without notice.

① HORIZONTAL
CROSS SECTION



Ⓐ VERTICAL
CROSS SECTION



SCALE: 4" = 1'-0"

Our products are tested to the standards of and certified by some of the foremost organizations in the fenestration industry.

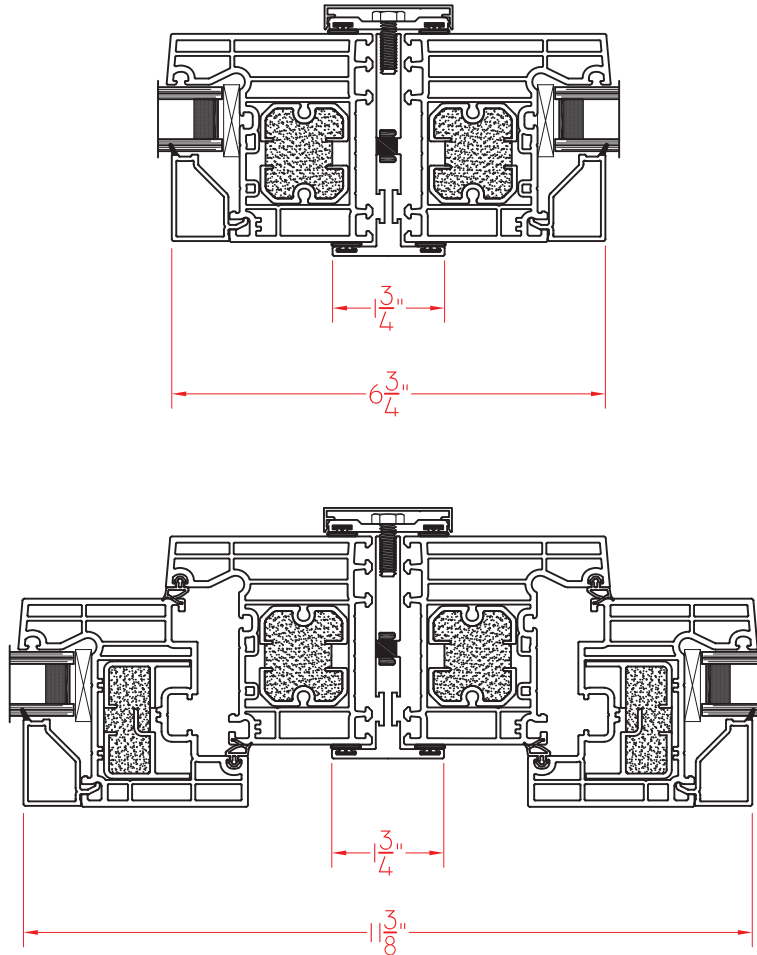




V500 Series 3 1/4" Frame Depth Casement (Project-In)

V500 Series T-Mull

This document contains confidential and proprietary information intended for the private use of Quaker.
© 2016 Quaker Window Products Co., All rights reserved.
Quaker reserves the right to change any/all designs without notice.



Our products are tested to the standards of and certified by some of the foremost organizations in the fenestration industry.



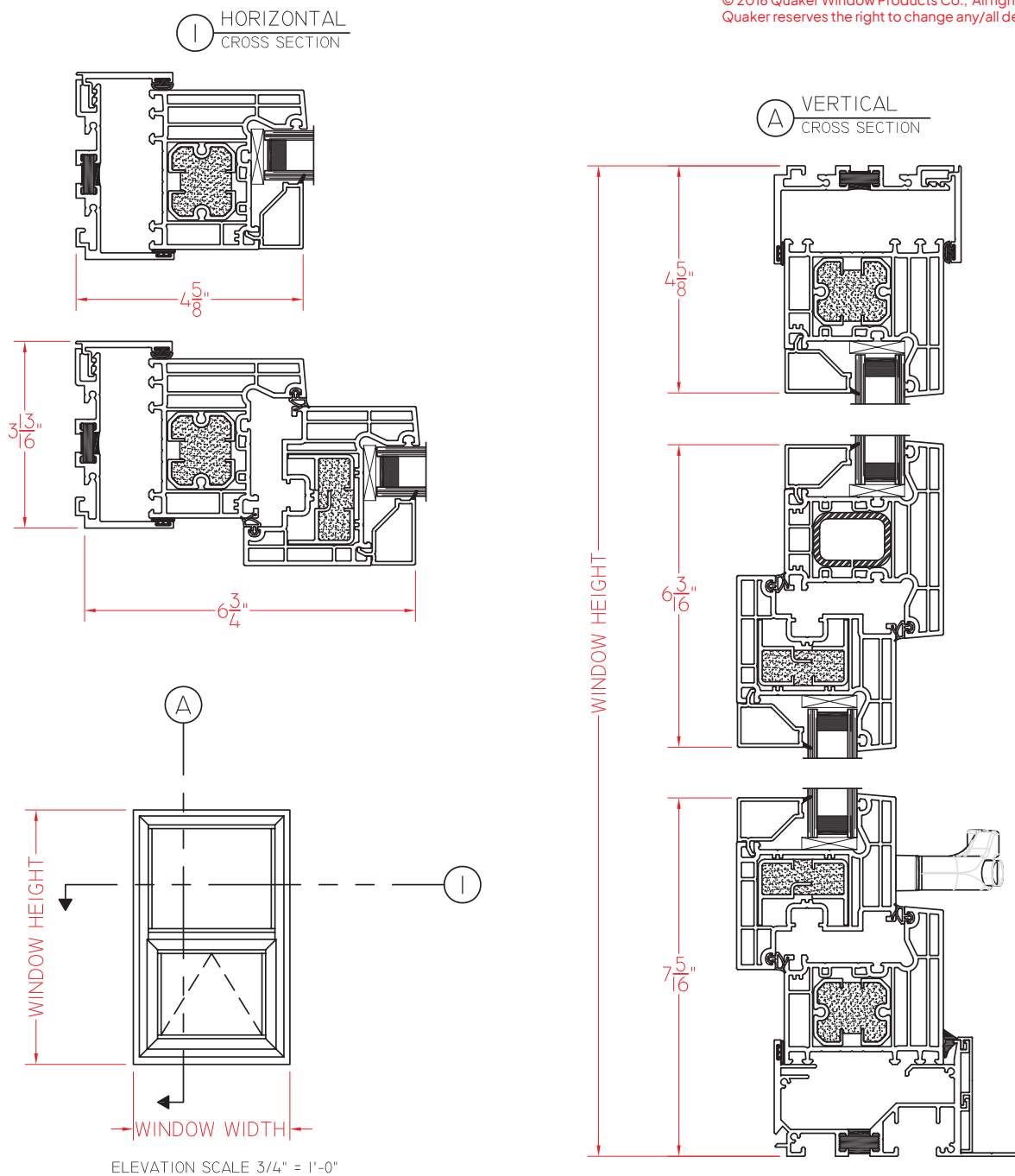


V500 Series 3 1/4" Frame Depth Casement (Project-In)

V500 Series Receptor System

Receptor Shown with V600 Project-Out Model above a V500 Fixed Model. Please Contact Quaker if a different detail is required.

This document contains confidential and proprietary information intended for the private use of Quaker.
© 2016 Quaker Window Products Co., All rights reserved.
Quaker reserves the right to change any/all designs without notice.



SCALE: 4" = 1'-0"

Our products are tested to the standards of and certified by some of the foremost organizations in the fenestration industry.



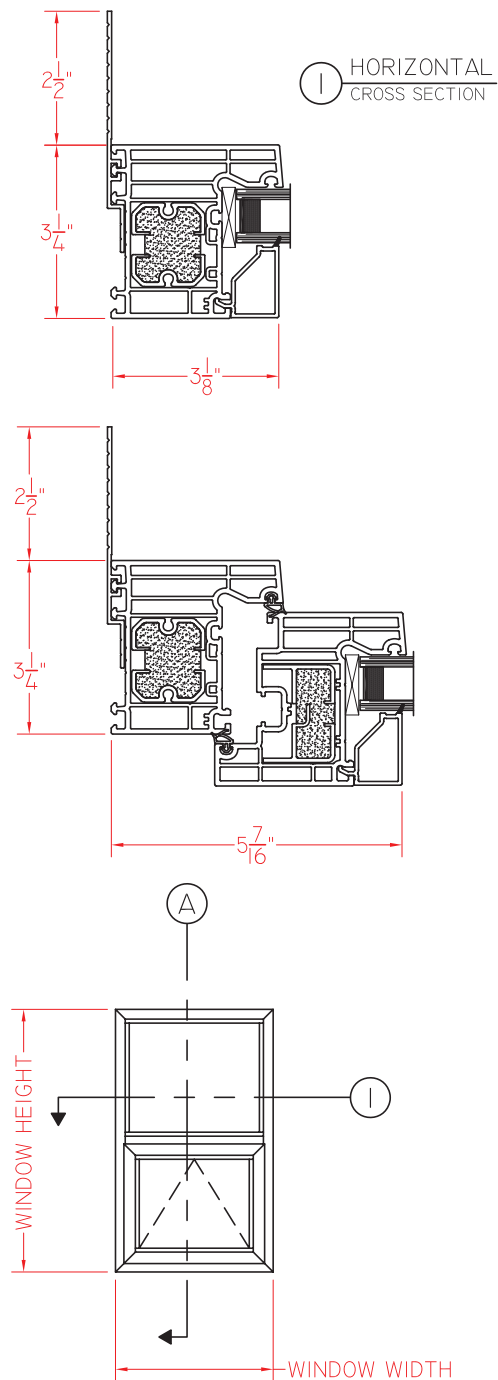


V500 Series 3 1/4" Frame Depth Casement (Project-In)

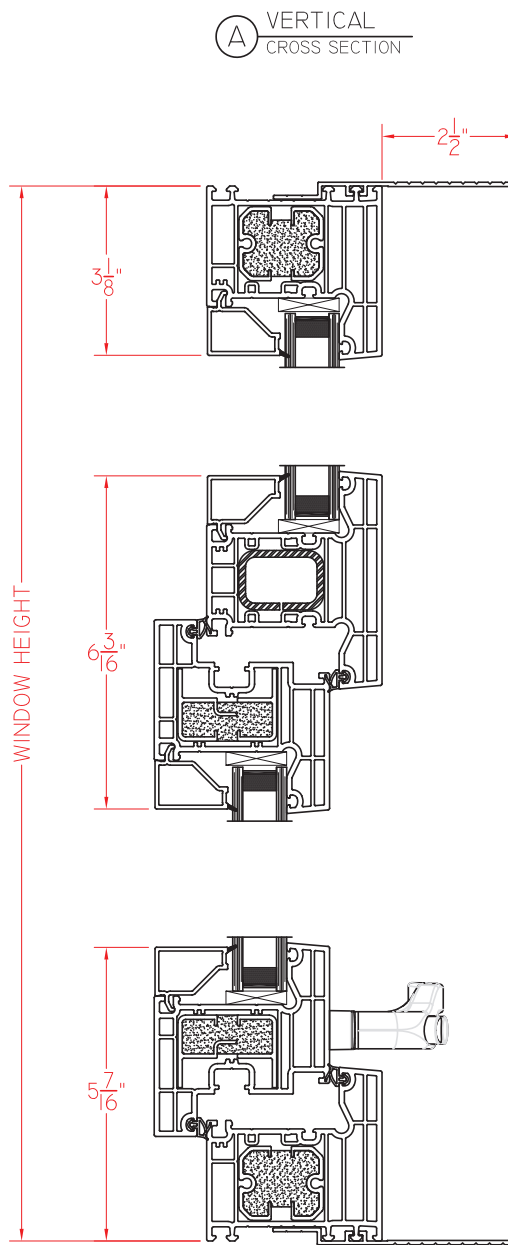
V500 Series Strap Anchor

Strap Anchor Shown with V600 Project-Out Model above a V500 Fixed Model. Please Contact Quaker if a different detail is required.

This document contains confidential and proprietary information intended for the private use of Quaker.
© 2016 Quaker Window Products Co., All rights reserved.
Quaker reserves the right to change any/all designs without notice.



ELEVATION SCALE 3/4" = 1'-0"



SCALE: 4" = 1'-0"

Our products are tested to the standards of and certified by some of the foremost organizations in the fenestration industry.

