

V500 Series 3 1/4" Frame Depth Fixed (Picture Window)

V500 Series Fixed (Picture Window)

Features

- ◇ **Material**
 - uPVC vinyl
- ◇ **Commercial Framing System**
 - 3 1/4" main frame
 - Architectural grade uPVC vinyl frame
- ◇ **Enhanced Design**
 - Mitered and welded corners
- ◇ **Glazing**
 - 1" insulating glass
 - Interior glazed
- ◇ **Colors**
 - White or Sandstone uPVC vinyl (interior/exterior)

Benefits

- ◇ AW-Rating make this the perfect uPVC product for commercial projects

Performance

- ◇ Structural & Thermal (test reports or thermal simulations available upon request)

Model	Casement (Project-In)
NAFS Rating	AW-100
Structural Load P.S.F.	150
Air infiltration	<0.10
Water (No Penetration) P.S.F.	12
U-Value (ranges based on multiple Low-E/Argon combinations)	0.14-0.31
SHGC (ranges based on multiple Low-E/Argon combinations)	0.12-0.50
CR (ranges based on multiple Low-E/Argon combinations)	45-78
STC	
OITC	

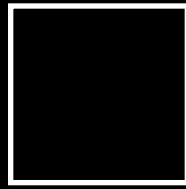
Due to periodic re-certification requirements, results shown may vary.

Options

- ◇ **Available Configurations**
 - Fixed
- ◇ **Muntin Choices**
 - Internal or simulated divided lites available
- ◇ **Glazing**
 - 1 3/8" insulating glass
 - 1 1/2" insulating glass
 - Multiple Low-E and argon glazing choices
 - Triple glazing (Energy TG)
 - Capillary tubes
 - Wide variety of glazing, tinting and thickness options
- ◇ **Panning & Trim Choices**
 - Wide variety of panning, receptor and trim available
- ◇ **Mulling**
 - 1/2" T-Mull
- ◇ **Colors**
 - High-performance Textured Black laminate (interior/exterior)
 - High-performance Textured Black laminate, Textured Dark Bronze laminate, or Textured Resembles Clear Anodized laminate (exterior only with White vinyl)
 - High-performance Textured Black laminate (interior and exterior)

Our products are tested to the standards of and certified by some of the foremost organizations in the fenestration industry.



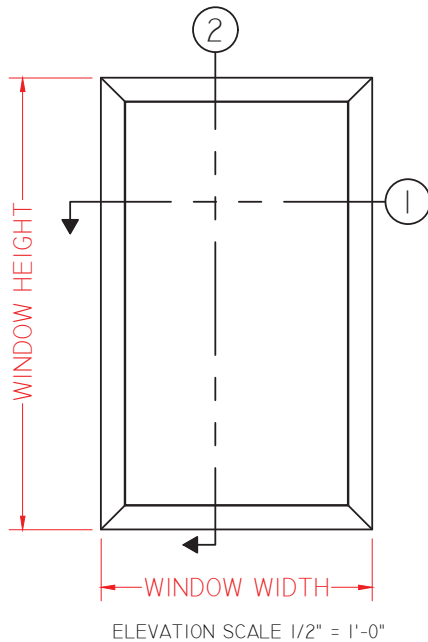
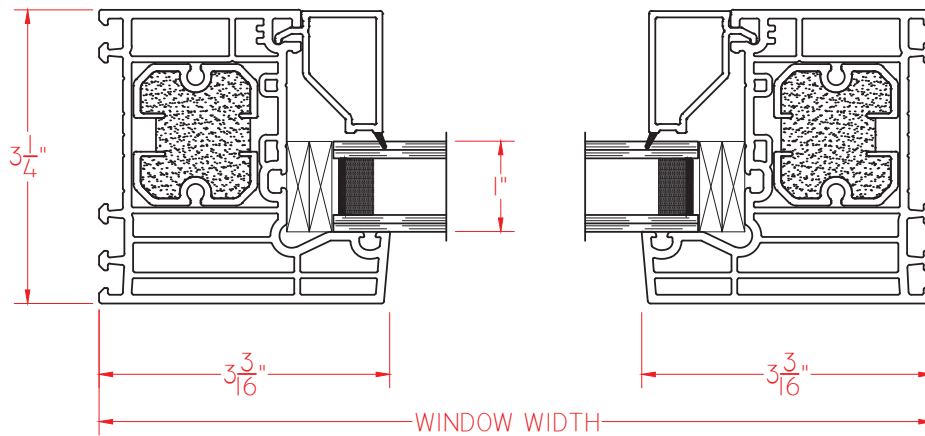


V500 Series 3 1/4" Frame Depth Fixed (Picture Window)

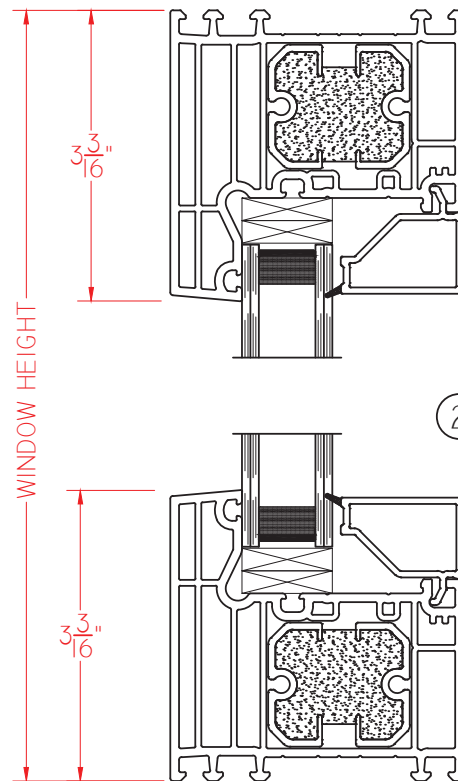
V500 Series Fixed (Picture Window)

This document contains confidential and proprietary information intended for the private use of Quaker.
© 2016 Quaker Window Products Co., All rights reserved.
Quaker reserves the right to change any/all designs without notice.

① HORIZONTAL CROSS SECTION

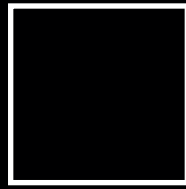


② VERTICAL CROSS SECTION



Our products are tested to the standards of and certified by some of the foremost organizations in the fenestration industry.



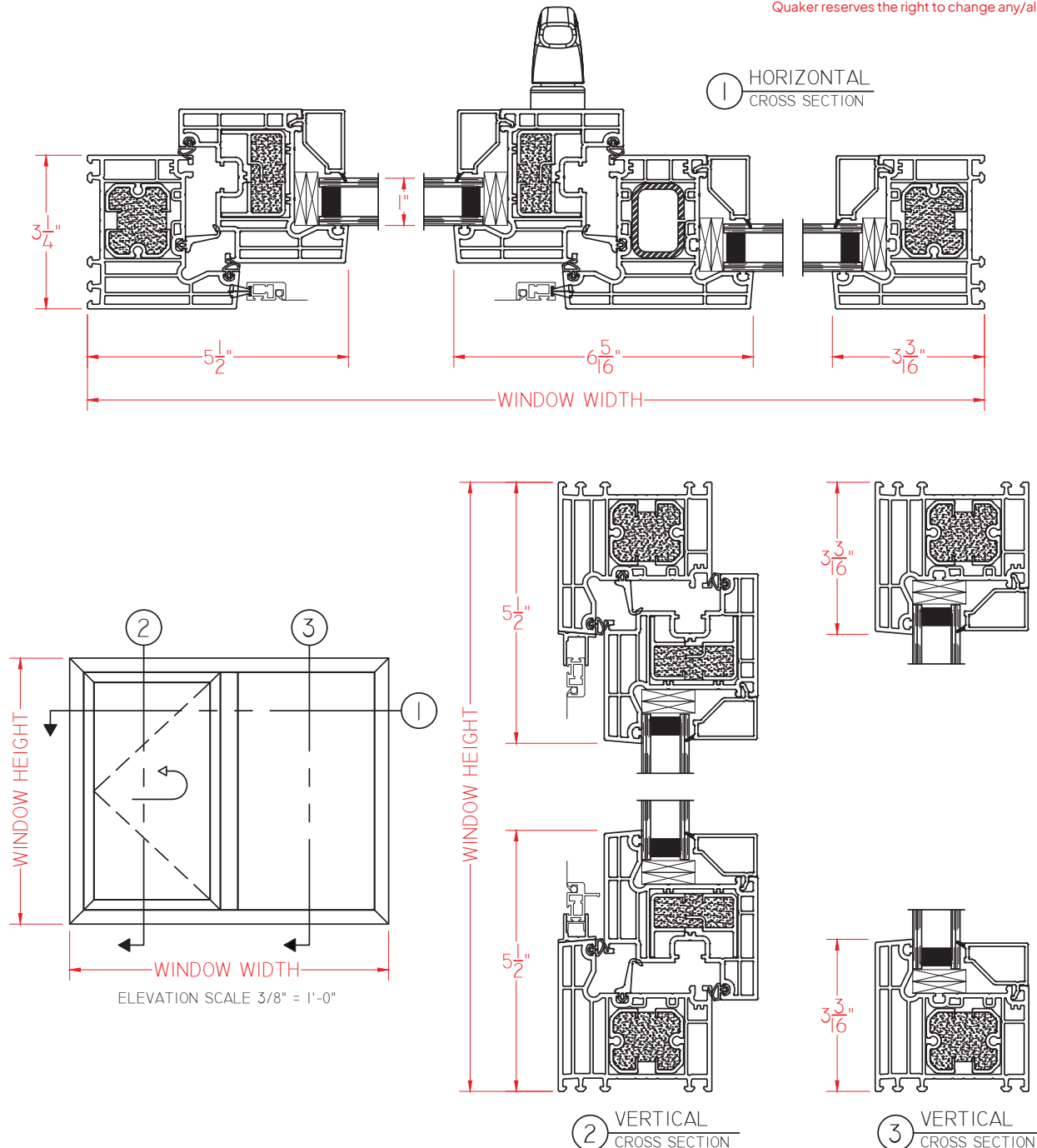


V500 Series 3 1/4" Frame Depth Fixed (Picture Window)

V500 Series Fixed (Picture Window) / Inswing Casement

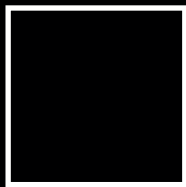
Shown with standard
1" Insulating Glass

This document contains confidential and proprietary information intended for the private use of Quaker.
© 2016 Quaker Window Products Co., All rights reserved.
Quaker reserves the right to change any/all designs without notice.



Our products are tested to the standards of and certified by some of the foremost organizations in the fenestration industry.



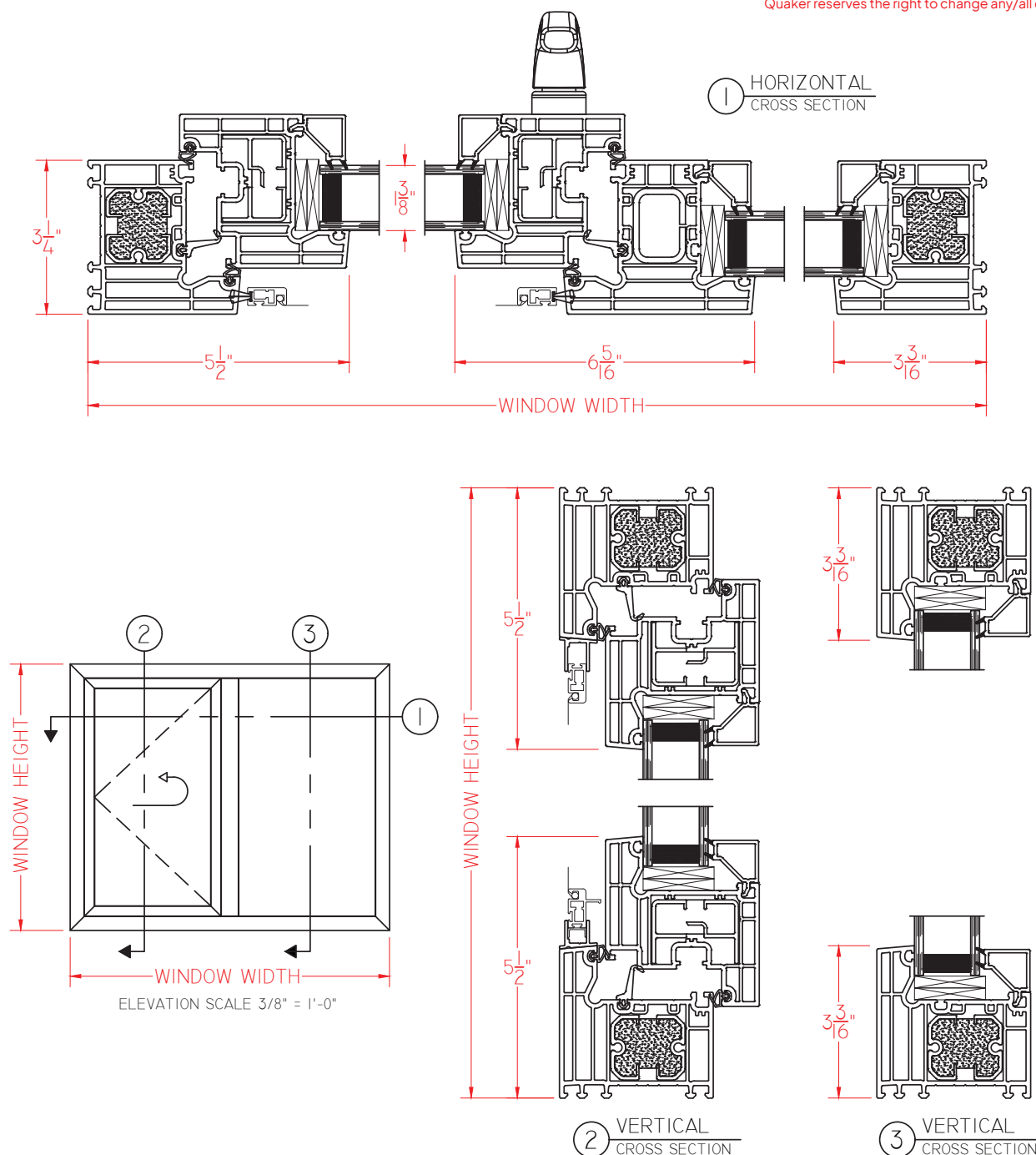


V500 Series 3 1/4" Frame Depth Fixed (Picture Window)

V500 Series Fixed (Picture Window) / Inswing Casement

Shown with 1 3/8" Insulating Glass

This document contains confidential and proprietary information intended for the private use of Quaker.
© 2016 Quaker Window Products Co., All rights reserved.
Quaker reserves the right to change any/all designs without notice.



Our products are tested to the standards of and certified by some of the foremost organizations in the fenestration industry.

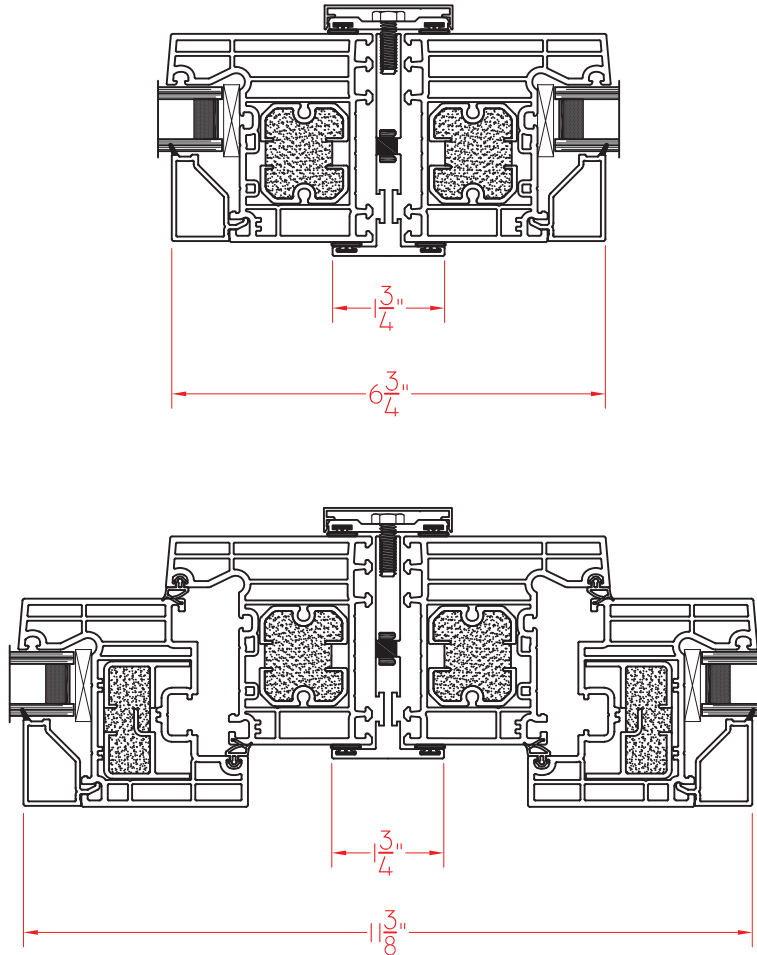




V500 Series 3 1/4" Frame Depth Fixed (Picture Window)

V500 Series T-Mull

This document contains confidential and proprietary information intended for the private use of Quaker.
© 2016 Quaker Window Products Co., All rights reserved.
Quaker reserves the right to change any/all designs without notice.



Our products are tested to the standards of and certified by some of the foremost organizations in the fenestration industry.



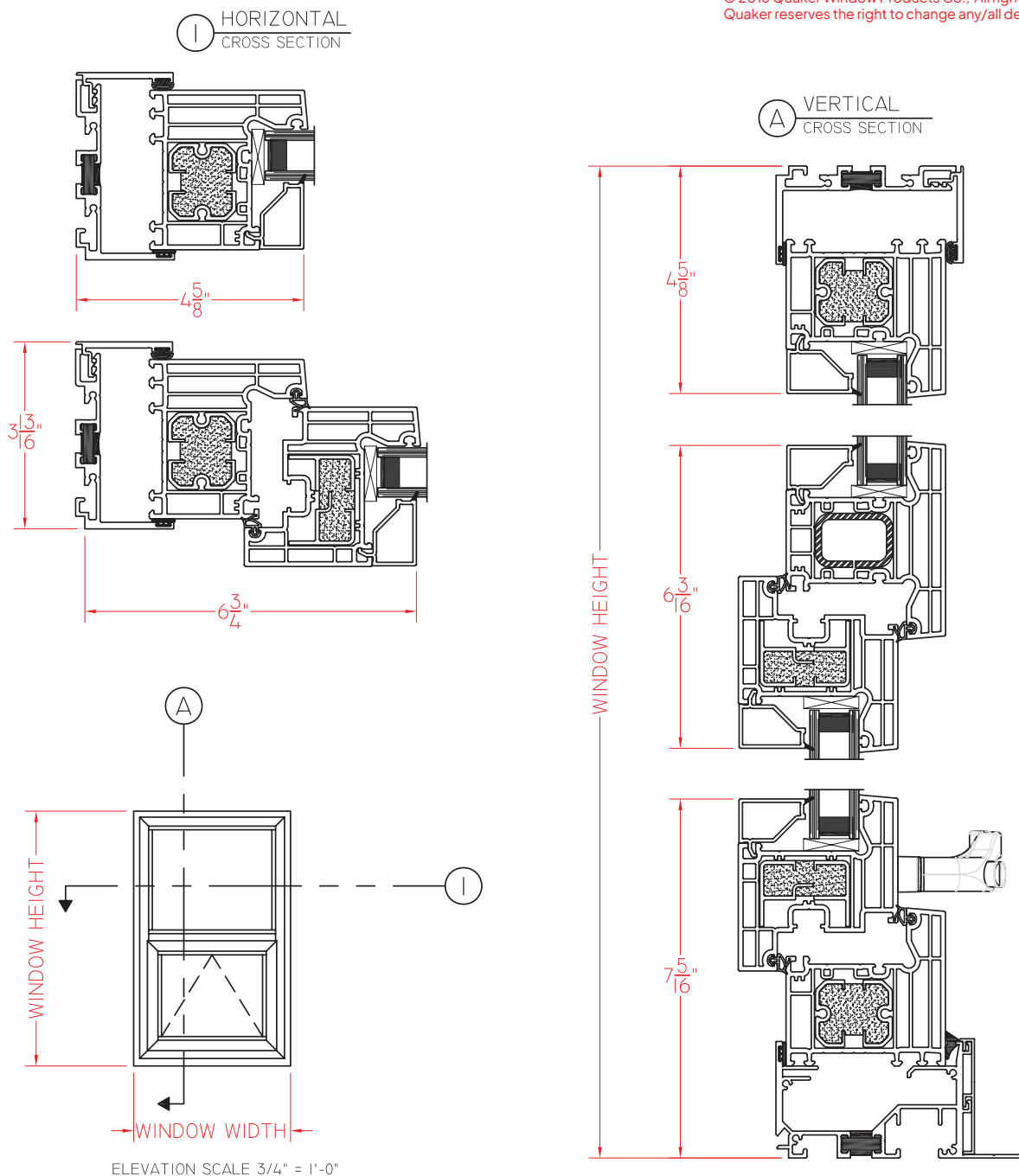


V500 Series 3 1/4" Frame Depth Fixed (Picture Window)

V500 Series Receptor System

Receptor Shown with V600 Project-Out Model above a V500 Fixed Model. Please Contact Quaker if a different detail is required.

This document contains confidential and proprietary information intended for the private use of Quaker.
© 2016 Quaker Window Products Co., All rights reserved.
Quaker reserves the right to change any/all designs without notice.



SCALE: 4" = 1'-0"

Our products are tested to the standards of and certified by some of the foremost organizations in the fenestration industry.



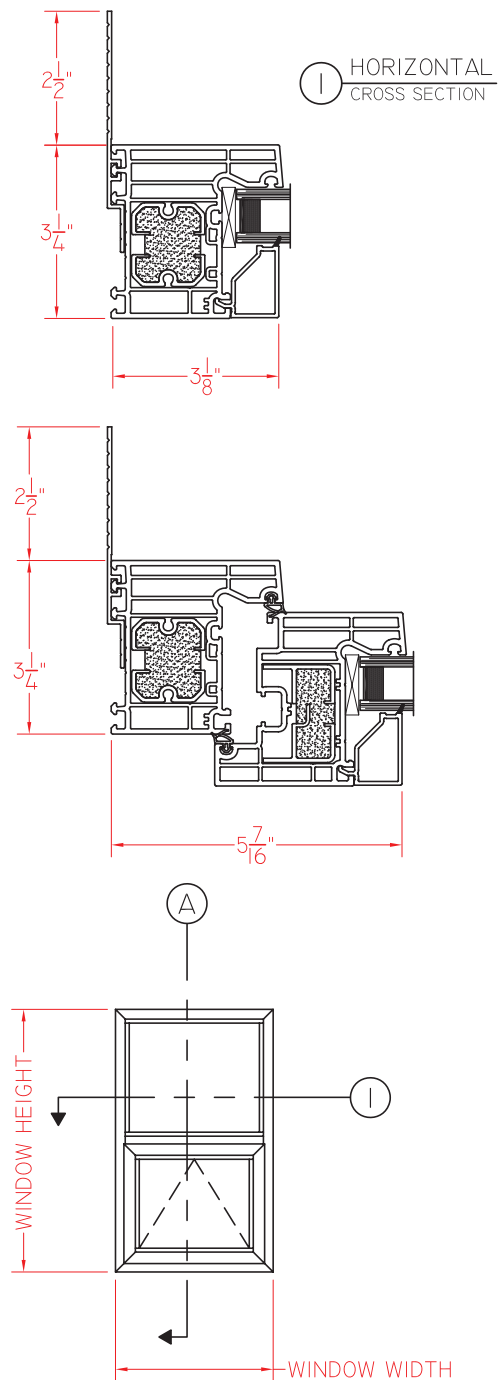


V500 Series 3 1/4" Frame Depth Fixed (Picture Window)

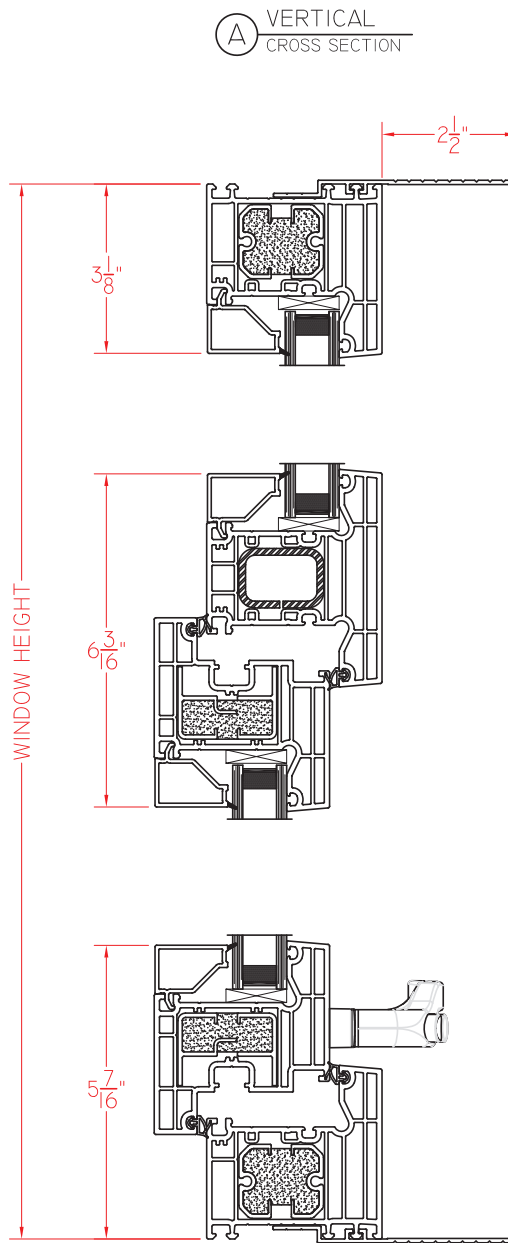
V500 Series Strap Anchor

Strap Anchor Shown with V600 Project-Out Model above a V500 Fixed Model. Please Contact Quaker if a different detail is required.

This document contains confidential and proprietary information intended for the private use of Quaker.
© 2016 Quaker Window Products Co., All rights reserved.
Quaker reserves the right to change any/all designs without notice.



ELEVATION SCALE 3/4" = 1'-0"



SCALE: 4" = 1'-0"

Our products are tested to the standards of and certified by some of the foremost organizations in the fenestration industry.

