

## V500 Series 3 1/4" Frame Depth Tilt/Turn Window (Project-In)

### V500 Series Tilt/Turn Window (Project-In)

#### Features

- ◇ **Material**
  - uPVC vinyl
- ◇ **Commercial Framing System**
  - 3 1/4" main frame
  - Architectural grade uPVC vinyl frame
- ◇ **Enhanced Design**
  - Mitered and welded corners
- ◇ **Glazing**
  - 1" insulating glass
- ◇ **Hardware**
  - Concealed hinges
  - Tilt/Turn Pull-In hardware
- ◇ **Screen**
  - Extruded aluminum screen frame with BetterVue™ mesh with WaterShed® technology
- ◇ **Colors**
  - White or Sandstone uPVC vinyl (interior/exterior)

#### Benefits

- ◇ AW-Rating make this the perfect uPVC product for commercial projects

#### Performance

- ◇ Structural & Thermal (test reports or thermal simulations available upon request)

Model	Casement (Project-In)
NAFS Rating	AW-75
Structural Load P.S.F.	112.78
Air infiltration	<0.10
Water (No Penetration) P.S.F.	12.11
U-Value (ranges based on multiple Low-E/Argon combinations)	0.16-0.31
SHGC (ranges based on multiple Low-E/Argon combinations)	0.10-0.49
CR (ranges based on multiple Low-E/Argon combinations)	45-78
STC	
OITC	

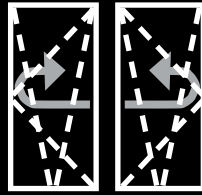
Due to periodic re-certification requirements, results shown may vary.

#### Options

- ◇ **Available Configurations**
  - Tilt/Turn Project-in (Left or Right hinge)
- ◇ **Muntin Choices**
  - Internal or simulated divided lites available
- ◇ **Screen**
  - Extruded aluminum screen frame with aluminum wire mesh
  - Extruded aluminum screen frame with sunscreen mesh
  - Extruded aluminum screen frame with stainless steel 0.009" thickness mesh
- ◇ **Glazing**
  - 1 3/8" insulating glass
  - 1 1/2" insulating glass
  - Multiple Low-E and argon glazing choices
  - Triple glazing (Energy TG)
  - Capillary tubes
  - Wide variety of glazing, tinting and thickness options
- ◇ **Panning & Trim Choices**
  - Wide variety of panning, receptor and trim available
- ◇ **Mulling**
  - 1/2" T-Mull
- ◇ **Colors**
  - High-performance Textured Black laminate (interior/exterior)
  - High-performance Textured Black laminate, Textured Dark Bronze laminate, or Textured Resembles Clear Anodized laminate (exterior only with White vinyl)
  - High-performance Textured Black laminate (interior and exterior)

Our products are tested to the standards of and certified by some of the foremost organizations in the fenestration industry.



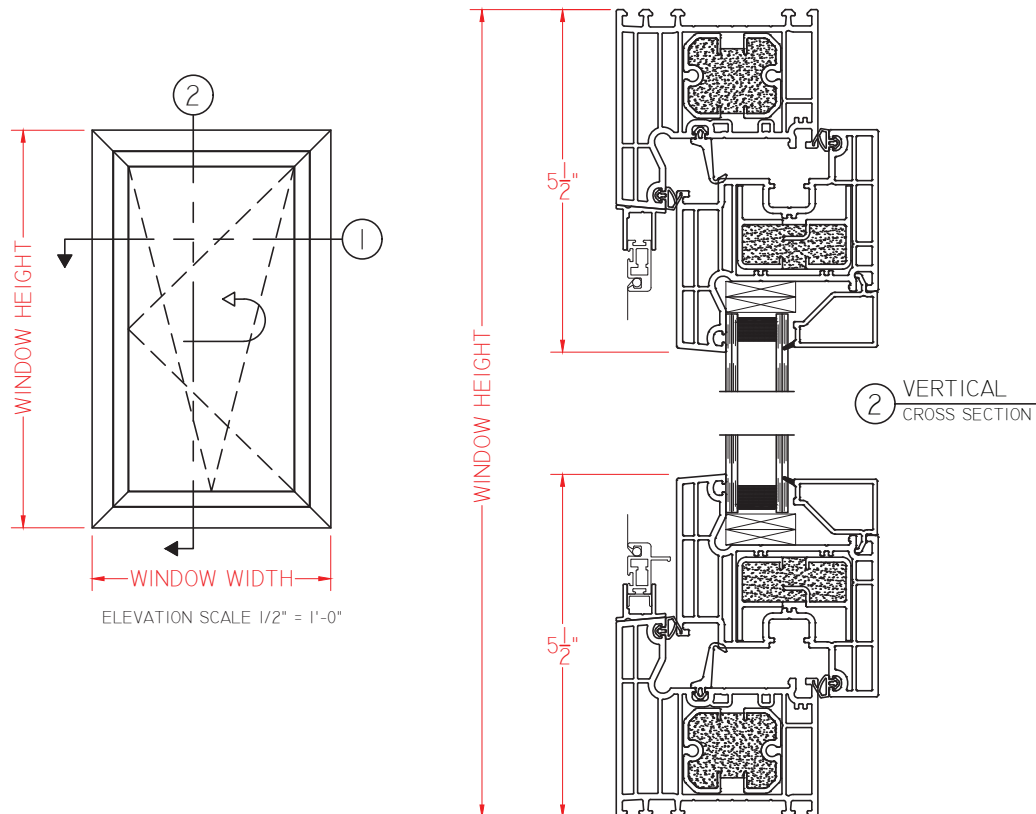
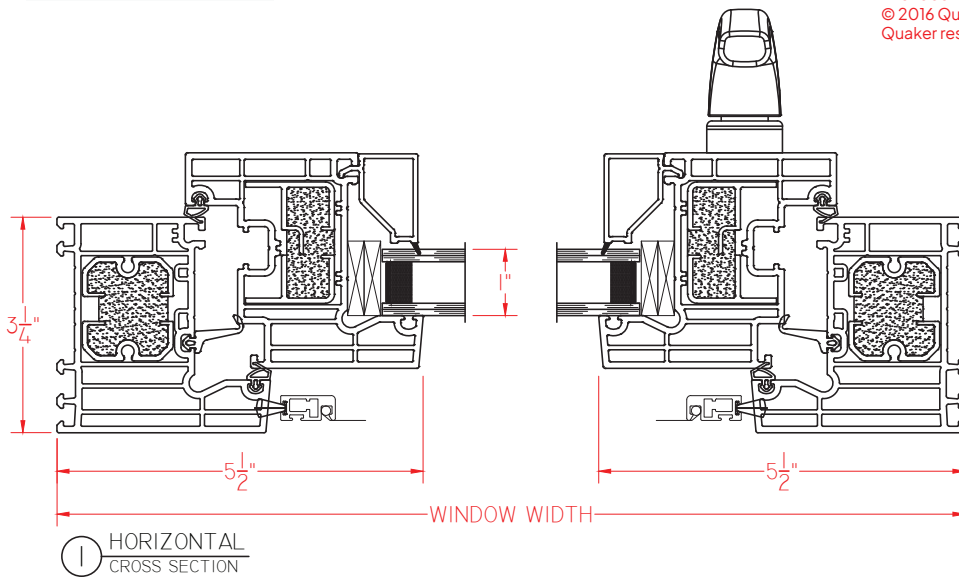


# V500 Series 3 1/4" Frame Depth Tilt/Turn Window (Project-In)

Shown with standard  
1" Insulating Glass

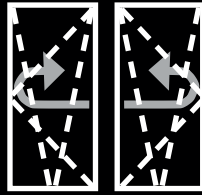
## V500 Series Tilt/Turn Window (Project-In)

This document contains confidential and proprietary information intended for the private use of Quaker.  
© 2016 Quaker Window Products Co., All rights reserved.  
Quaker reserves the right to change any/all designs without notice.



Our products are tested to the standards of and certified by some of the foremost organizations in the fenestration industry.



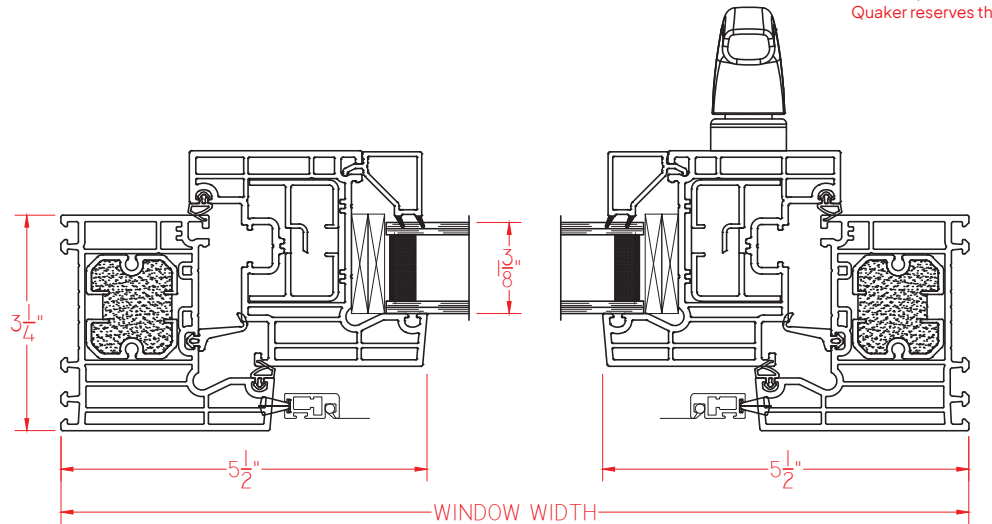


# V500 Series 3 1/4" Frame Depth Tilt/Turn Window (Project-In)

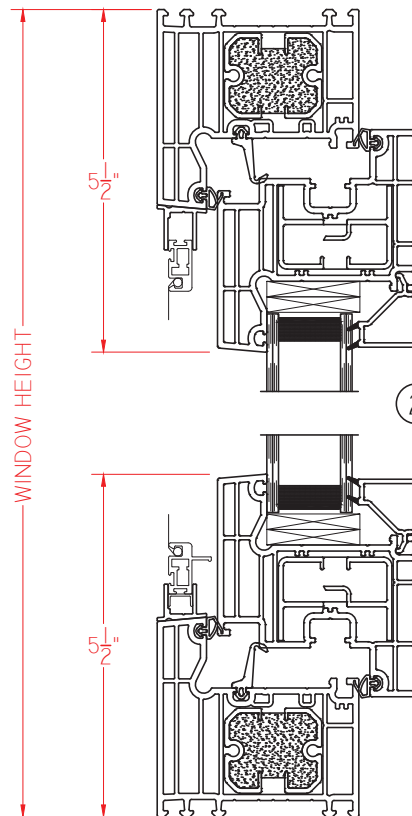
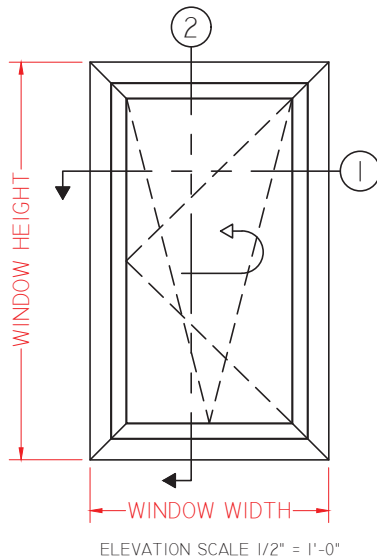
Shown with 1 3/8"  
Insulating Glass

## V500 Series Tilt/Turn Window (Project-In)

This document contains confidential and proprietary information intended for the private use of Quaker.  
© 2016 Quaker Window Products Co., All rights reserved.  
Quaker reserves the right to change any/all designs without notice.



① HORIZONTAL  
CROSS SECTION



② VERTICAL  
CROSS SECTION

Our products are tested to the standards of and certified by some of the foremost organizations in the fenestration industry.

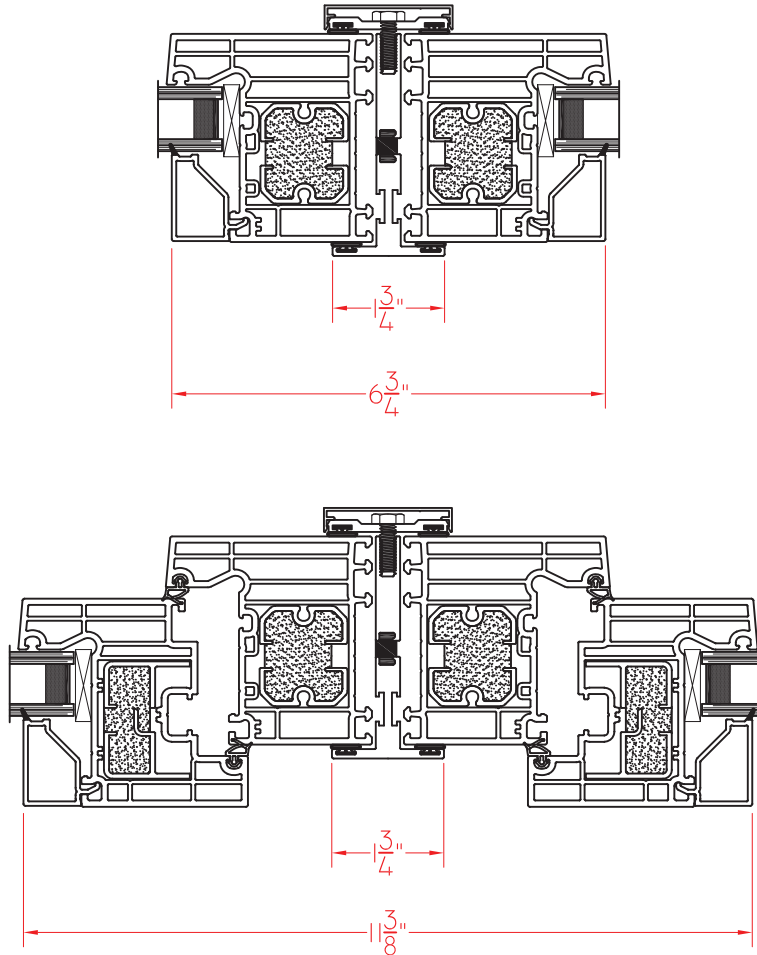




# V500 Series 3 1/4" Frame Depth Tilt/Turn Window (Project-In)

## V500 Series T-Mull

This document contains confidential and proprietary information intended for the private use of Quaker.  
© 2016 Quaker Window Products Co., All rights reserved.  
Quaker reserves the right to change any/all designs without notice.



Our products are tested to the standards of and certified by some of the foremost organizations in the fenestration industry.



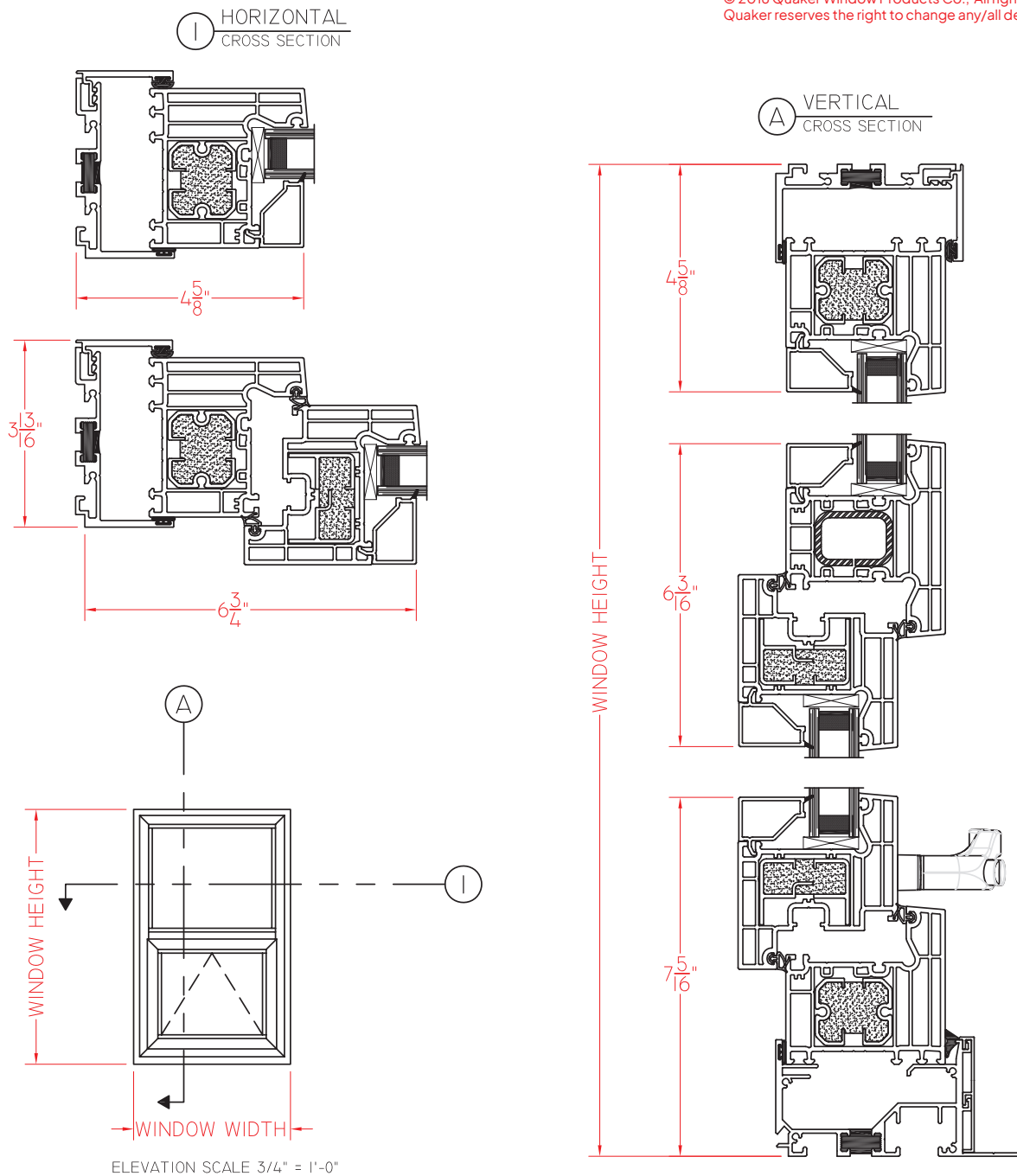


# V500 Series 3 1/4" Frame Depth Tilt/Turn Window (Project-In)

## V500 Series Receptor System

Receptor Shown with V600 Project-Out Model above a V500 Fixed Model. Please Contact Quaker if a different detail is required.

This document contains confidential and proprietary information intended for the private use of Quaker.  
© 2016 Quaker Window Products Co., All rights reserved.  
Quaker reserves the right to change any/all designs without notice.



SCALE: 4" = 1'-0"

Our products are tested to the standards of and certified by some of the foremost organizations in the fenestration industry.



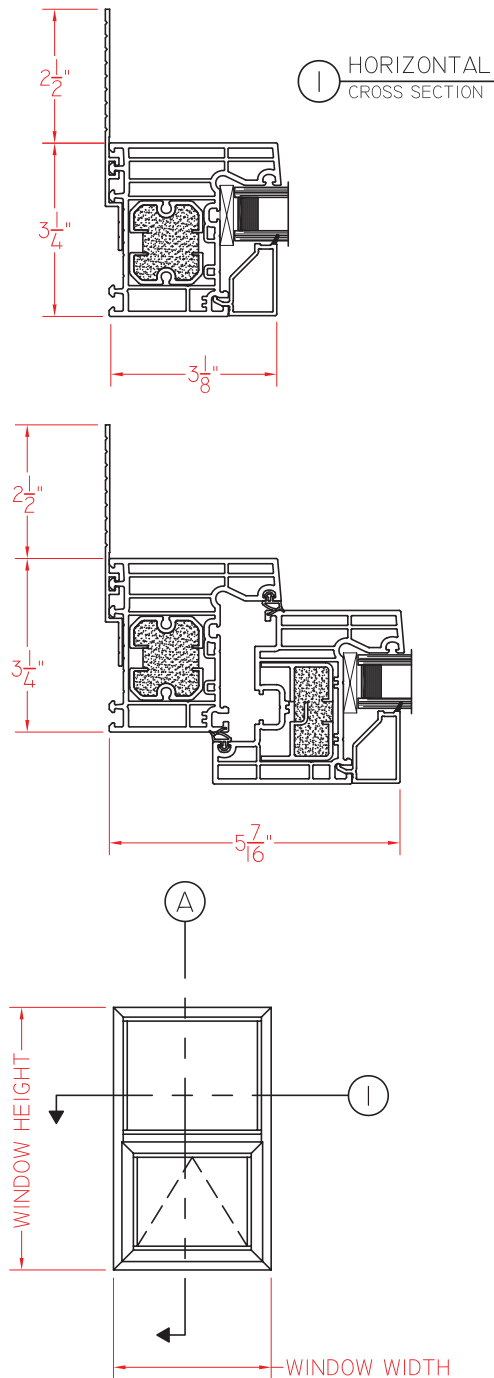


# V500 Series 3 1/4" Frame Depth Tilt/Turn Window (Project-In)

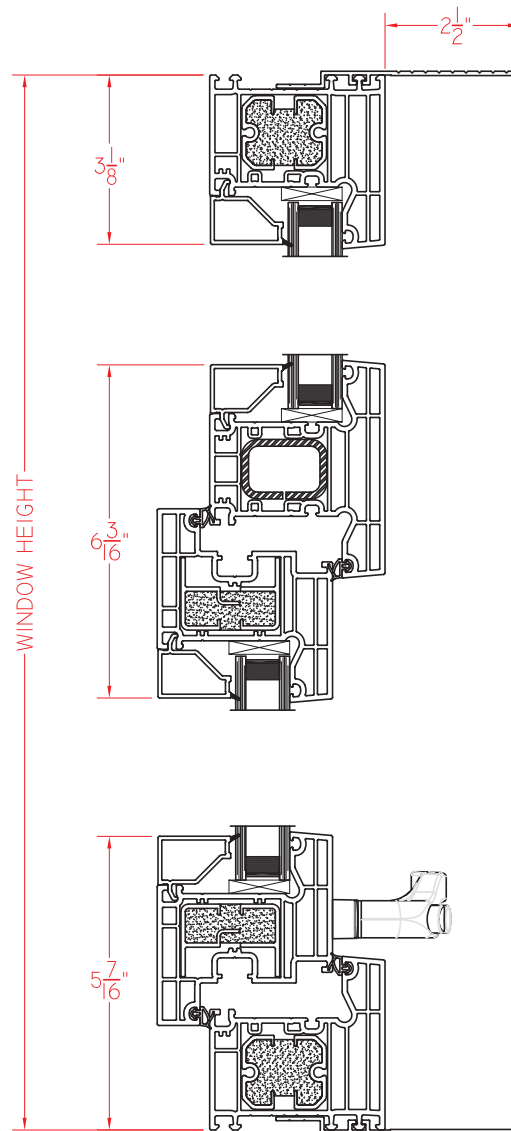
## V500 Series Strap Anchor

Strap Anchor Shown with V600 Project-Out Model above a V500 Fixed Model. Please Contact Quaker if a different detail is required.

This document contains confidential and proprietary information intended for the private use of Quaker.  
© 2016 Quaker Window Products Co., All rights reserved.  
Quaker reserves the right to change any/all designs without notice.



ELEVATION SCALE 3/4" = 1'-0"



SCALE: 4" = 1'-0"

Our products are tested to the standards of and certified by some of the foremost organizations in the fenestration industry.

