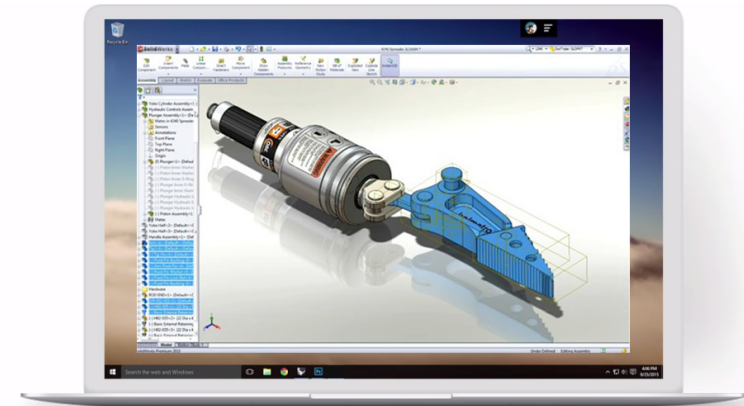


Paperspace Built for Manufacturing

Why Paperspace?

Paperspace is the only hosted desktop offering that comes standard with a GPU. Our highly-scalable virtual desktop solution is suited for compute intensive workloads like CAD/CAM, simulations and rendering, as well as general purpose VDI. Paperspace enables nearly instantaneous file transfer for real-time collaboration, even remotely and on-the-go.

- 1G public fiber & 10G backplane
- GPU accelerated machines
- Permission management & monitoring
- Isolated single tenant networking
- Encrypted channel for outgoing communication



CAD/CAM - Run a powerful machine in the cloud built for the most demanding applications like SolidWorks and Inventor.

Enterprise Resource Planning - Enable access to mission critical process management software on any device, anywhere in the world.

"We've been using VDI for about a decade. It works but it was always a tremendous pain to manage and the costs were extremely high. Migrating everything to Paperspace was easy and the best technology decision we've made. We get all of the same functionality without managing servers and paying our Citrix consultant to come in and "fix" everything every few months... I would recommend them to anyone."

- CTO