



# **SITE ACCESS EQUIPMENT**



**THE LEADING PRODUCER & DISTRIBUTOR OF TRENCH SHIELDING & SHORING EQUIPMENT SINCE 1995**

# ROAD PLATES

Designed with ease of use in mind, Pro-Tec Equipment's Steel Road Plates include flush mounted pick points to allow for easy, balanced handling with no protrusion above the plate surface.

Ideal for contractors, municipalities and utility companies, for use in street crossing, trench covering, temporary access over unstable terrain and avoiding unnecessary back filling.

**Standard features:**

- A-36 Steel
- Flush mounted pick plates
- Half-moon cutouts (2)
- Balanced lifting points

**Options:**

- Quick connect tool



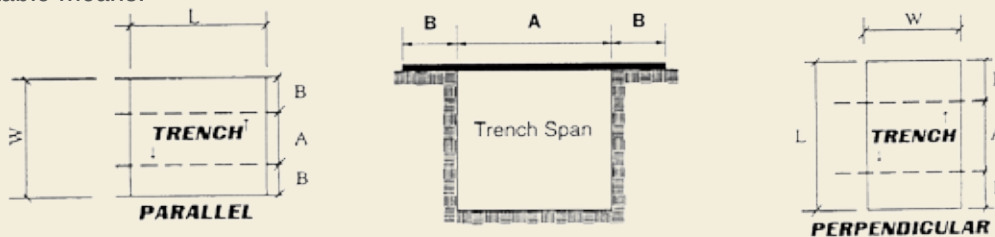
**Steel Road Plates**

Model	Width (ft.)	Length (ft.)	Thickness	Weight (lb.)
SP-48	4	8	1"	1300
SP-510	5	10	1"	2050
SP-810	8	10	1"	3270
SP-812	8	12	1"	3920
SP-816	8	16	1"	5220
SP-820	8	20	1"	6530

*Other sizes available upon request*

Trench widths are based on an analysis per the 14th edition of the "standard specification for highway bridges" by A.A.S.H.T.O. An assumed axle loading of 12 tons with a 30% impact factor was used. The axle length is 6 feet; therefore the number of wheel carried by a plate depends on the roadway width.

Plate shall be secured from lateral movement while in use by means of materials such as asphalt-base cold mix, spikes and other acceptable means.



Model	Parallel "A"	Parallel "B"	Perpendicular "A"	Perpendicular "B"
SP-48	24"	12"	48"	24"
SP-510	30"	15"	60"	30"
SP-810	48"	24"	72"	24"
SP-812	48"	24"	72"	36"
SP-816	48"	24"	72"	60"
SP-820	48"	24"	72"	84"

# PRO-GRIDS

Reduce site clean-up cost

Pro-Tec Equipment's Pro-Grids are a portable, virtually maintenance-free product that serves as a means to eliminate track-out by removing mud, dirt and debris from the underbodies and tires of on-the-job vehicles.

**Standard features:**

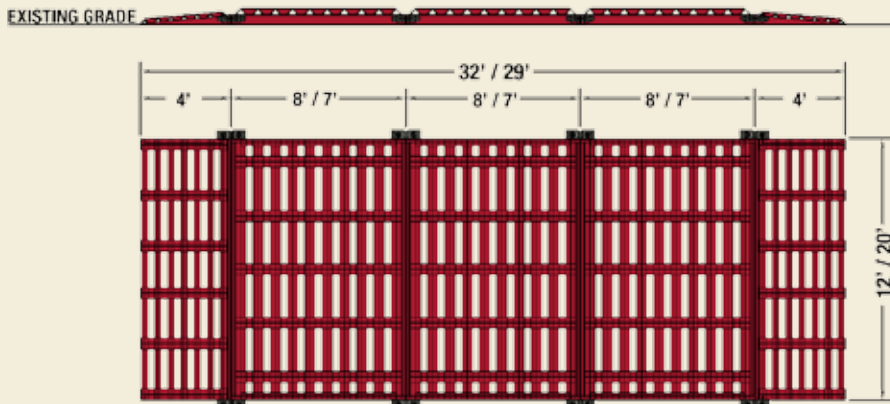
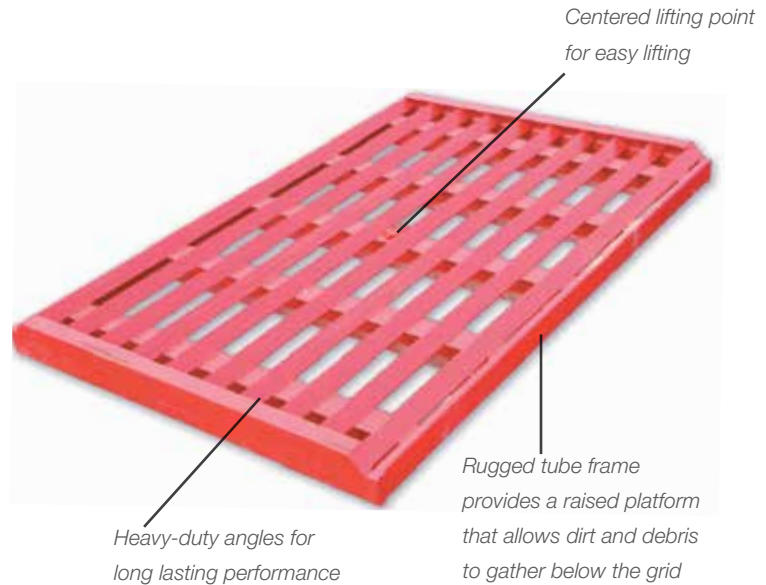
- 10" deep - Extends the time between debris removal
- Centered lifting point

**Pro-Grid options:**

- Ramps - allow vehicle to ease on and off
- Connector tabs - to accommodate uneven terrain and increase grid stability
- Connector tabs use existing Pro-Tec Equipment Slide Rail H-Brackets and pins

**Pro-Grid & Ramp**

Model	Ht x Lgth x Width (in.)	Weight (Lb.)
PG - 812	10 X 96 X 144	2400
PG - R	10 X 48 X 144	970
PG - 720	10 X 84 X 240	3500
PG - R20	10 X 48 X 240	1620



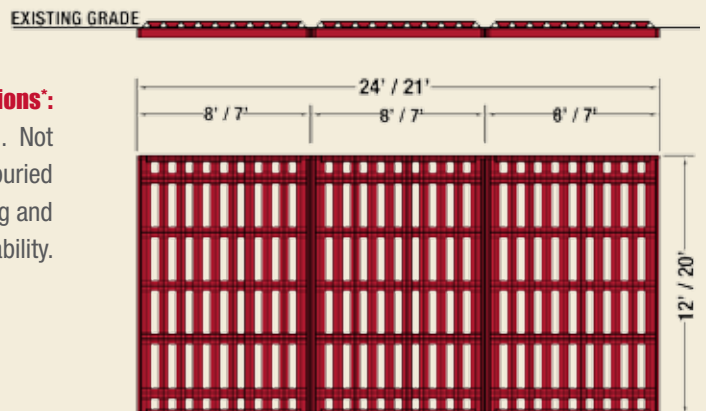
\*Assumes one (1) tire rotation is equal to about 11'

**Pro-Grid Setup - 3 Tire Rotations:**

Shown using the Pro-Grid Ramps and optional connector tab, three Pro-Grids and two ramps are setup allowing for 29'-32' of travel. Using the Pro-Grid Ramps allow for the tire system to be setup above existing grade, such as on paved areas.

**Pro-Grid Setup - 2 Tire Rotations:**

Three Pro-Grids are setup allowing for 21'-24' of travel. Not using the Pro-Grid Ramps, the Grid system is shown buried 6" below existing grade to allow for easy traversing and increased stability.



# DURA BASE

With the Dura-Base Composite Mat system, temporary roads can be built on a variety of surfaces. From soft soils (muddy areas, swamps, fields) and areas needing protection (running tracks) to environmentally sensitive areas, the Dura-Base Composite Mat system allows you to build a temporary road without laying down tons of stone, wood planking or other stabilizing materials.



## Dura-Base mats

Size	Thickness	Weight (lb.)	Color	Temp. Range	Crushing Pressure
8' x 14'	4.25"	1050	Sand	-20° to 200° F	600 psi

### Standard features:

- Traction improving tread pattern
- 1/4 turn locks
- Mats conform to uneven terrain
- Overlap lip ensures a consistent barrier
- 8' x 14' overall dimension provides 7' x 13' usable space



# GROUND PROTECTION MATS

Offering three styles of Ground Protection Mats; AlturnaMATS, ClearMATS, and VersaMATS.

## AlturnaMATS

Featuring a diamond plate tread design, AlturnaMATS are able to withstand extreme cold and heat. These mats are 1/2" thick and flexible enough to contour to the existing surface conditions, yet strong enough to support 120+ ton vehicles! Available in black and white.

### AlturnaMATS

Model	Size	Weight (lb.)
AM-24	2' x 4'	22
AM-26	2' x 6'	32
AM-28	2' x 8'	43
AM-38	3' x 8'	64
AM-48	4' x 8'	86



## ClearMATS

Built off the same platform as the AlturnaMAT, the ClearMATS provide the grass underneath the sunlight they desire, while still providing all the protection the AlturnaMAT offers. Ideal for use on projects where ground protection would be in place for multiple days, the ClearMATS offer ground protection while not leaving the grass underneath burned and discolored.

### ClearMATS

Model	Size	Weight (lb.)
CM-24	2' x 4'	22
CM-26	2' x 6'	32
CM-28	2' x 8'	43
CM-38	3' x 8'	64
CM-48	4' x 8'	86



## VersaMATS

Designed off of the AlturnaMAT, the VersaMATS provide all the advantages of the AlturnaMAT, while the flat, slip-resistant tread permits pedestrians to walk safely on the mats, yet they are as rugged as the AlturnaMATS. The reverse side has the same diamond plate tread as the AlturnaMATS, providing great traction for vehicles.

### VersaMATS

Model	Size	Weight (lb.)
VM-24	2' x 4'	22
VM-26	2' x 6'	32
VM-28	2' x 8'	43
VM-38	3' x 8'	64
VM-48	4' x 8'	86



# VERSA BRIDGE

## Temporary Bridging

The Pro-Tec Equipment Versa Bridge is a portable, temporary bridge system that provides ready access for vehicles and pedestrians on construction sites. Ideal for use as temporary access over excavations, and as an emergency replacement for permanent structures.

### Standard features:

- Can be installed in various lengths and widths. Each section is 6' wide and is available in 10' increments from 20' to 50' in length.
- Can be loaded and unloaded using a light-duty crane or heavy-duty forklift.
- Designed for easy installation at the job site.
- Each section has four integral pick points that provide stable, balanced lifts using an excavator or mobile crane.
- Manufactured of fully welded steel structures.
- Skid resistant surface improves vehicle traction for sure footing.
- Designed to meet loading criteria in accordance with AASHTO-US bridge design code by certified Professional Engineers.



### Versa Bridge - Temporary Bridging

Model	Width (ft.)	Length (ft.)	Weight (lb.)	Guard Rail Weight (lb.)
VB-20	6	20	8000	800
VB-30	6	30	12500	1000
VB-40	6	40	16000	1400
VB-50	6	50	24500	1700

Available with or without a haunch



# LADDER PLATFORM & FENCING

## Ladder Platform

Fold-able and compact, the Ladder Platform offered by Pro-Tec Equipment can be used on sheet pile, Slide Rail, and trench boxes! Featuring a swing through door and ladder arm, the Ladder Platform offers a complete system to allow workers to safely enter and exit a sheet pile, Slide Rail, or trench shield excavation.

### Features:

- Lightweight
- Adjustable front legs for leveling
- Clamps for use on trench box and slide rail panels
- Clamps for use on sheet pile projects
- Side entry to ladder
- Collapsible for ease of storing and transporting

### Ladder Platform

Height folded (in.)	Height unfolded (in.)	Width (in.)	Depth (in.)	Weight (lb.)
11	43	44	34	215



## Trenchguard Fencing

Lightweight and easy to use, Trenchguard Fencing is an alternative to traditional fencing. Designed with a toe kick, Trenchguard Fencing is able to be used on trench shield and slide rail panels, as well as on sheet pile projects.

### Features:

- Lightweight
- Toe-kick
- Clamps for use on trench box and slide rail panels
- Clamps for use on sheet pile projects
- Overlapping design
- 2" O.D. Post to secure fencing to clamps





**PRO-TEC EQUIPMENT**

4837 West Grand River Ave  
 Lansing, MI 48906  
 Phone: 1-800-292-1225  
 Fax: (517) 827-3263  
[www.pro-tecequipment.com](http://www.pro-tecequipment.com)

The information in this brochure is presented in good faith to assist the user in determining whether our products are suitable for his/her application. No warranty or representation, however, is intended or made, nor is protection from any law or patent to be inferred, and all patent rights are reserved. Job site photos are strictly intended for general product information only and may not comply with all applicable safety standards. Always refer to manufacturer's specific tabulated data, O.S.H.A. 29 CFR 1926 Subpart P for excavation and all applicable safety standards prior to each use. ©2016 Pro-Tec Equipment. All rights reserved.



**A division of:**  
**TRINITY SHORING PRODUCTS, INC.**  
 A TRINITY MINING & CONSTRUCTION EQUIPMENT, INC. COMPANY