



PRO-TEC EQUIPMENT MOD SERIES

The Pro-Tec Equipment MOD Series is a modular aluminum trench shield system that is lightweight and easily transported via pick-up truck. It can be used as a 2-, 3- or 4-sided system with existing components and can be changed on the fly at a jobsite to meet the job's requirements.

Standard features:

- Smooth wall panel design
- Foam filling – prevents soil and water buildup
- Accepts telescoping spreaders (TS4 Spreaders)
- Bottom panels can be removed
- 2-way corner posts allow, 2-, 3- or 4-sided configurations
- Professional Engineer Certified to meet or exceed O.S.H.A. requirements

MOD Series Options

- Aluminum built-in knife edge
- Steel bolt-on knife edge
- Wheel kits
- Adjustable legs
- Lifting eyes
- Stacking units
- Custom sizes



A. Mod Series trench shield components stack flat, easily fit in a pick-up truck or van.

B. Exclusive corner endpost design accepts either panels or adjustable spreaders, lets you build a 2-, 3-, or 4-sided shield quickly.

C. Foam-filled tongue and groove panels keep dirt and moisture out, and self-align during assembly.

D. Panel ends are flanged for extra durability, allows easy handling.

E. Lifting eyes provide convenient pick point.

F. Bottom panels may be removed to allow for cross utilities.

Professional Engineer certified to comply with O.S.H.A. standards.

Quick and Easy Assembly



Lightweight 2-foot high aluminum panels are easily unloaded from a pick-up truck by hand without the use of machines. No lifting equipment needed.



To begin assembling shield, two corner end-posts are pinned to side panels and rear panel.



Side and rear panels are stacked to desired height.



Corner end-posts are pinned in place.

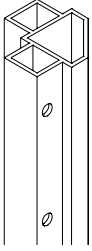


Adjustable spreaders pin securely in place to complete a 3-sided shield.

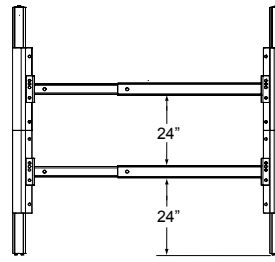


Mod Series Trench Shields are easily handled by a rubber-tired backhoe loader.

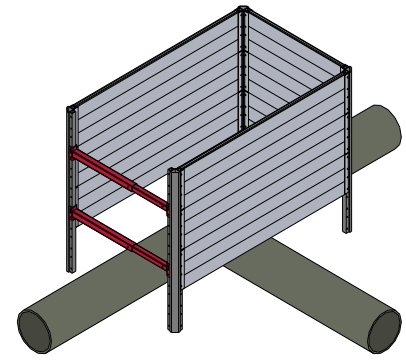
Corner Post (2-way)



Model	Length	Weight (lb.)
MC 24	24"	19
MC 48	48"	38
MC 72	72"	56
MC 96	96"	75
MC 120	120"	94

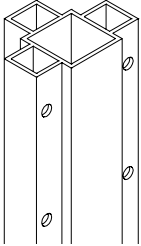


End View
Sectional corner post with adjustable struts

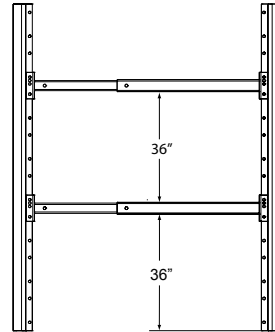


Panels omitted to allow for T-connections or existing utilities

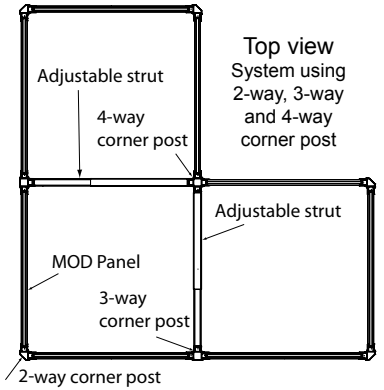
Corner Post (3-way)



Model	Length	Weight (lb.)
MC 3-24	24"	25
MC 3-48	48"	51
MC 3-72	72"	76
MC 3-96	96"	101
MC 3-120	120"	127



End View
Full length corner post with adjustable struts

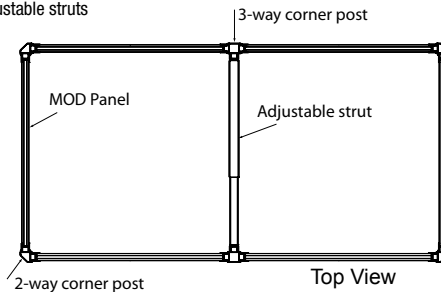


Top view
System using 2-way, 3-way and 4-way corner post

MOD Panel Depth Chart

Width x Lgth (ft.)	Weight (lb.)	Maximum Depth of Cut (ft.)		
		B	C-60	C-80
MPS 2 x 3	50	50	50	42
MPS 2 x 4	60	50	42	32
MPS 2 x 6	90	38	28	21
MPS 2 x 8	120	28	21	16
MPS 2 x 10	140	23	17	13
MPS 2 x 12	170	19	14	11
MPS 2 x 14	190	12	9	7

Heavy duty and special length panels are available



Top View
System using 3-way corner post

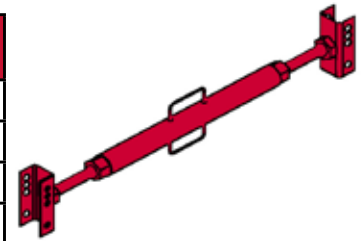
Telescoping Adjustable Spreader Sets (set of 4)



Model (Sets of 4)	Adjustment (I.D.)	Weight (lb.)
TS 4 - 1826	18" to 26"	108
TS 4 - 2334	23" to 34"	128
TS 4 - 2844	28" to 44"	153
TS 4 - 3454	34" to 54"	183
TS 4 - 4266	42" to 66"	223
TS 4 - 5288	52" to 88"	273

Adjustable Spreaders (Inside Panel Dimensions)

Model	Adjustment (lb.)	Weight (lb.)
MAS 23	24" to 36"	27
MAS 35	36" to 60"	37
MAS 57	60" to 84"	46
MAS 79	84" to 108"	55



PRO-TEC EQUIPMENT

4837 West Grand River Ave
Lansing, MI 48906
Phone: 1-800-292-1225
Fax: (517) 827-3263
www.pro-tecequipment.com



A division of:
TRINITY SHORING PRODUCTS, INC.
A TRINITY MINING & CONSTRUCTION EQUIPMENT, INC. COMPANY

The information in this brochure is presented in good faith to assist the user in determining whether our products are suitable for his/her application. No warranty or representation, however, is intended or made, nor is protection from any law or patent to be inferred, and all patent rights are reserved. Job site photos are strictly intended for general product information only and may not comply with all applicable safety standards. Always refer to manufacturer's specific tabulated data, O.S.H.A. 29 CFR 1926 Subpart P for excavation and all applicable safety standards prior to each use. ©2014 Pro-Tec Equipment. All rights reserved.

