



HALL AND HALL®

Dedicated to Land and Landowners Since 1946

SALES | AUCTIONS | FINANCE | MANAGEMENT | APPRAISALS

## Star Meadows Retreat | Whitefish, MT | \$15,950,000



### Executive Summary

Forty minutes from Whitefish and nearly surrounded by Flathead National Forest, this 178± deeded-acre gated estate represents one of Montana's most compelling and unique configurations. With no neighboring homes in sight, the property delivers the kind of absolute privacy and self-sufficiency that would be difficult to replicate on scale.

Designed with grandeur, self-sufficiency, and security in mind, the estate offers seven distinct dwellings, an additional central barndominium-style lodge and a small off-grid cabin, all offered turnkey. At its heart, the masterfully crafted, recently expanded main residence with thoughtfully designed outdoor living spaces makes this home suitable for a variety of use profiles. Six brand-new guest homes provide comfortable, independent accommodations for staff, family, or executive teams.

The infrastructure behind this property is equally impressive. Wells, multiple septic systems, backup generators and internet service, with over one million dollars invested in road development, ensure the estate operates reliably and independently.

Beyond the buildings, the land itself has been meticulously developed with rolling terrain, mature trees, two spring-fed fish ponds, a professionally built shooting range, gazebos, and large equipment shops. Ranch equipment is included in the offering.

Whether the vision is a legacy family compound, a world-class corporate retreat, or a fully prepared private redoubt for those who value sovereignty and self-reliance, this property is ready to fulfill it immediately, and without compromise..



## Just The Facts

- 178± deeded acre gated inholding nearly surrounded by Flathead National Forest
- Masterfully constructed three-bedroom, five baths, 7,500± square foot lodge-style log home with master wing, executive boardroom-level office, theater room, and chef's kitchen
- New 10,000± square foot barndominium style lodge with full kitchen, western bar, event space, two bedrooms, two bathrooms, and full, unfinished basement.
- Six new guest homes
- Self-sufficiency built in with backup generators and water storage
- Professionally designed shooting range
- Spring-fed ponds with gazebos
- Shops and equipment storage
- Offered turnkey, fully furnished and equipped
- 40 minutes to Whitefish; under one hour to Glacier Park International Airport and FBO





HALL AND HALL®

Dedicated to Land and Landowners Since 1946

SALES | AUCTIONS | FINANCE | MANAGEMENT | APPRAISALS





HALL AND HALL®

Dedicated to Land and Landowners Since 1946

SALES | AUCTIONS | FINANCE | MANAGEMENT | APPRAISALS

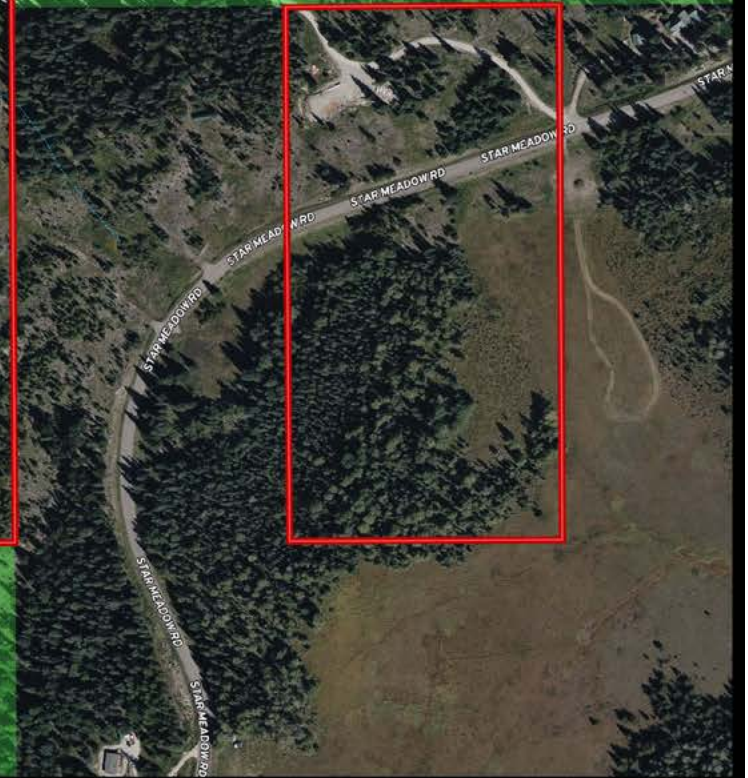


DEKE TIDWELL | dtidwell@hallandhall.com  
2814 BROOKS ST., STE. 640 | MISSOULA, MT 59801  
(M) 406-544-7191

*Information provided by Hall and Hall concerning real estate listed for sale is believed to be reliable but is not guaranteed and should be independently verified by potential purchasers. Information is subject to change, withdrawal, or correction. Hall and Hall makes no representations or warranties about the property or the accuracy or completeness of the information concerning the property including, without limitation: that the actual square footage, measurements, acreage, zoning, tax information, school district and other factors that may affect the value or use of the property may vary from that listed or shown in maps or public records and may change; the property's condition, income potential, or compliance with applicable laws or regulations; that estimates of potential rents, income, expenses, and capitalization rates may not be achieved; that some photographs of the property may be digitally enhanced; the legality or enforceability of any covenants, conditions or restrictions that may affect the use any enjoyment of the property; and any changes in market conditions or the future investment value of real estate listed for sale. Hall and Hall is not liable for any inaccuracies, errors, or omissions concerning information about the property or losses that result from the use of this information. Information provided by Hall and Hall concerning the property is not a substitute for inspections, surveys, title searches or other due diligence by potential purchasers. Potential purchasers should perform their own due diligence including legal and financial review before purchasing.*

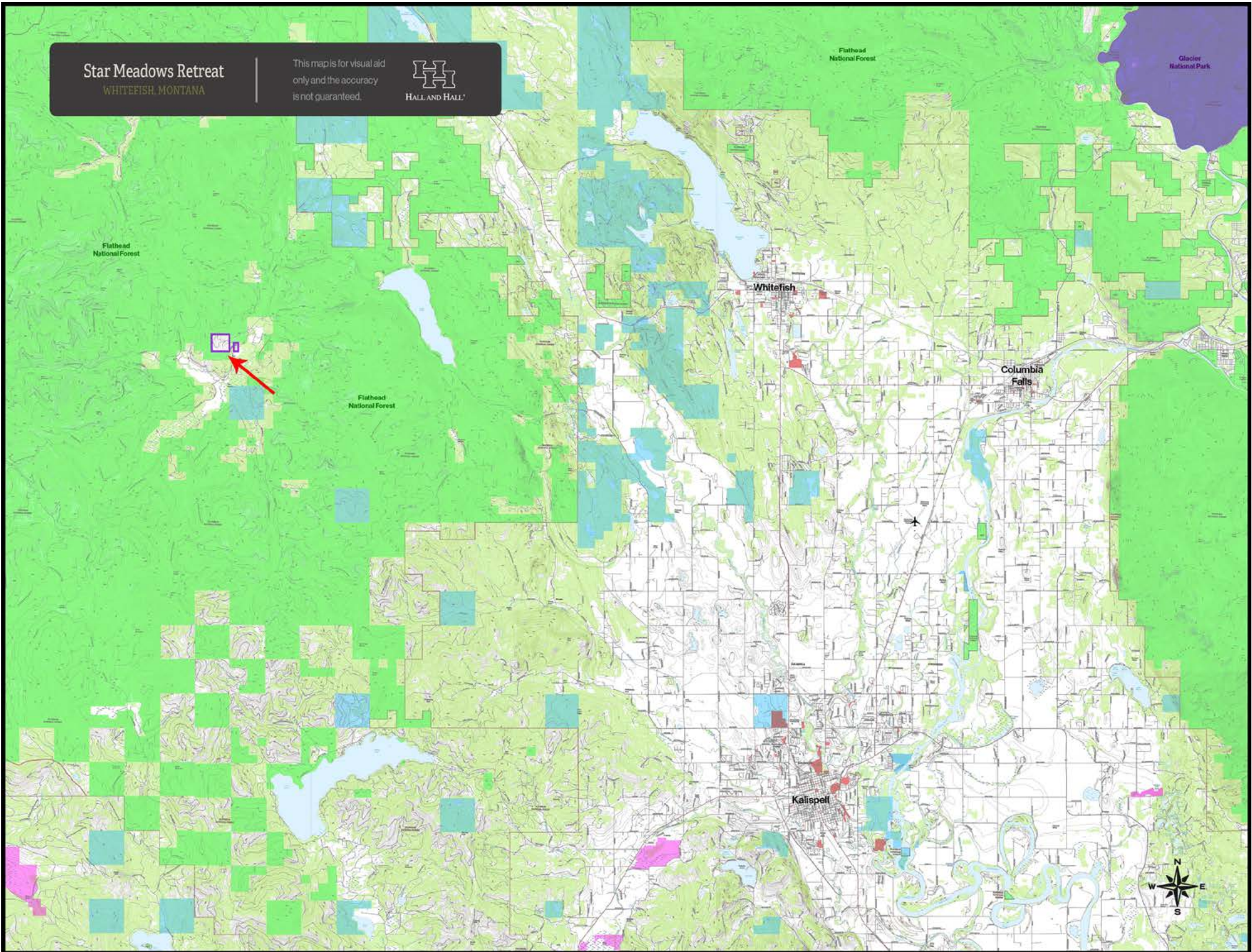
Star Meadows Retreat  
WHITEFISH, MONTANA

This map is for visual aid  
only and the accuracy  
is not guaranteed.



Star Meadows Retreat  
WHITEFISH, MONTANA

This map is for visual aid  
only and the accuracy  
is not guaranteed.



Flathead  
National Forest

Flathead  
National Forest

Glacier  
National Park

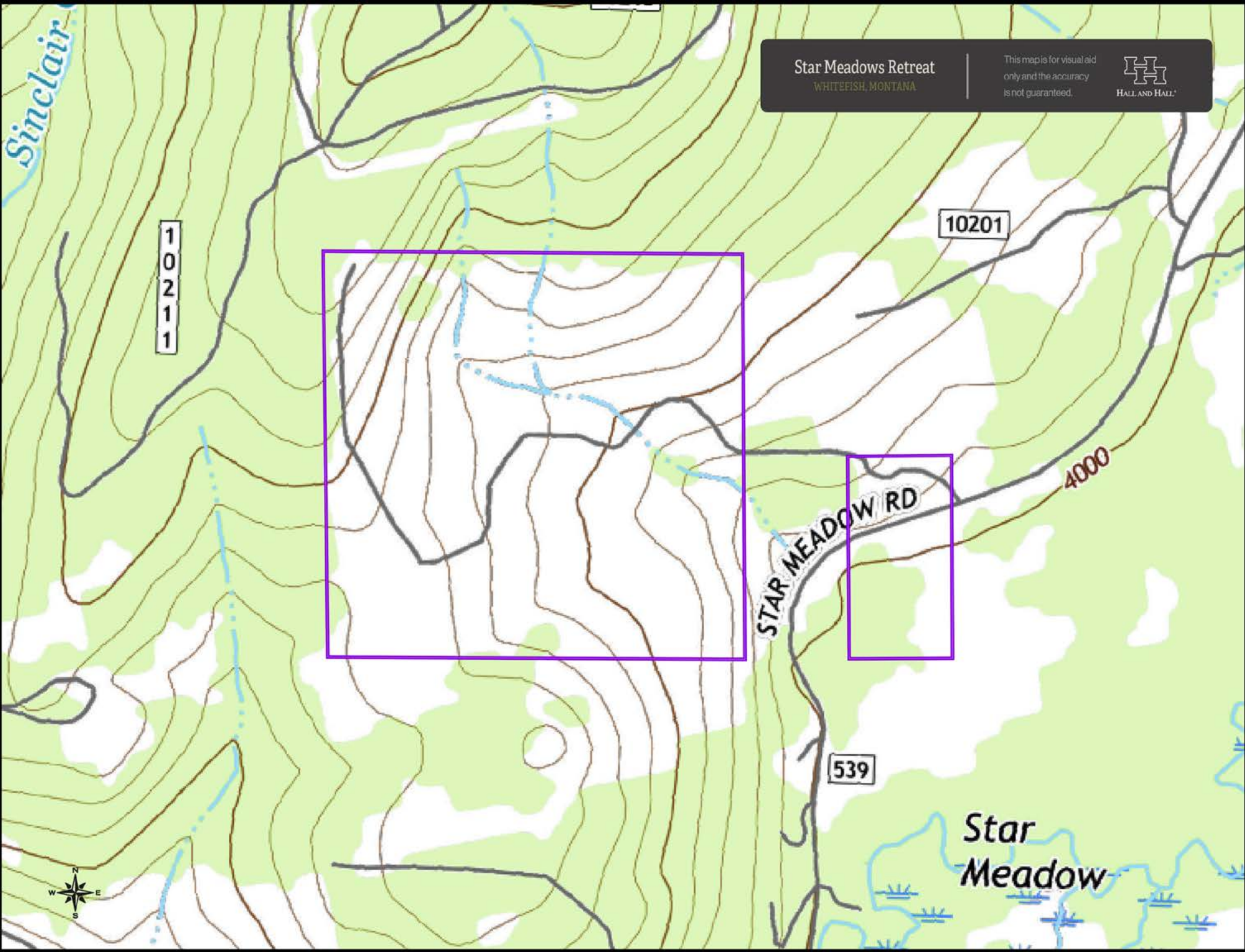
Whitefish

Columbia  
Falls

Flathead  
National Forest

Kalispell





Star Meadows Retreat  
WHITEFISH, MONTANA

This map is for visual aid only and the accuracy is not guaranteed.



10211

10201

4000

STAR MEADOW RD

539

Star Meadow

