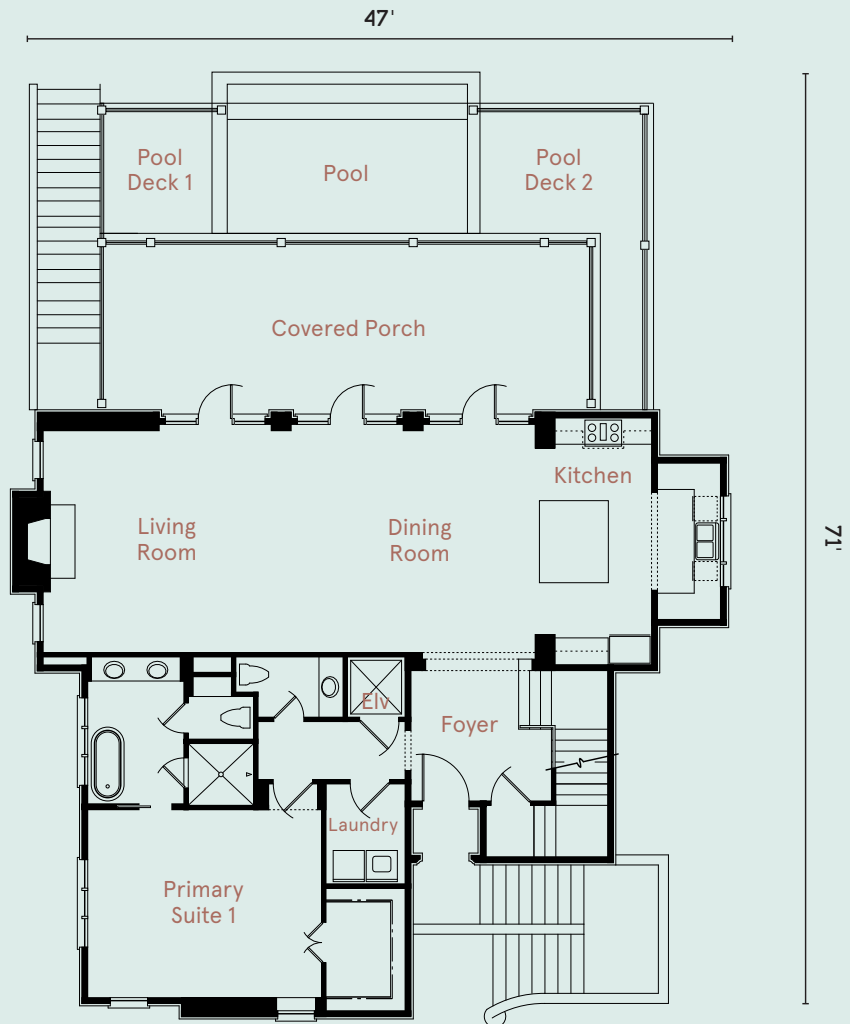


## CRUDEN BAY



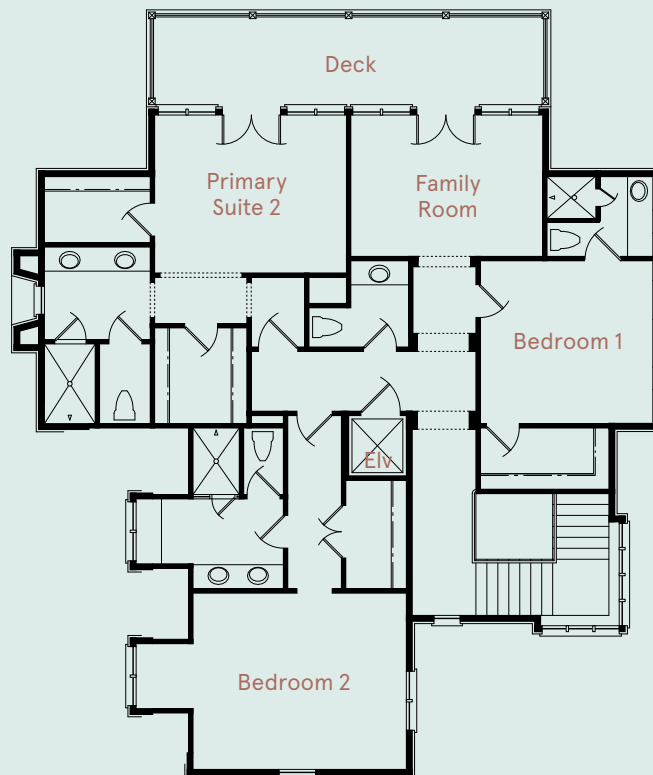
FIRST FLOOR

Foyer	11' x 11'	Covered Porch	37' x 13'
Living Room	19' x 17'	Pool Deck 1	10' x 10'
Dining Room	19' x 17'	Pool Deck 2	13' x 10'
Kitchen	14' x 19'	Pool	18' x 8'
Primary Suite 1	18' x 14'		



## SECOND FLOOR

Primary Suite 2	15' x 12'	Bedroom 2	16' x 13'
Family Room	15' x 11'	Deck	30' x 7'
Bedroom 1	13' x 12'		



## CRUDEN BAY

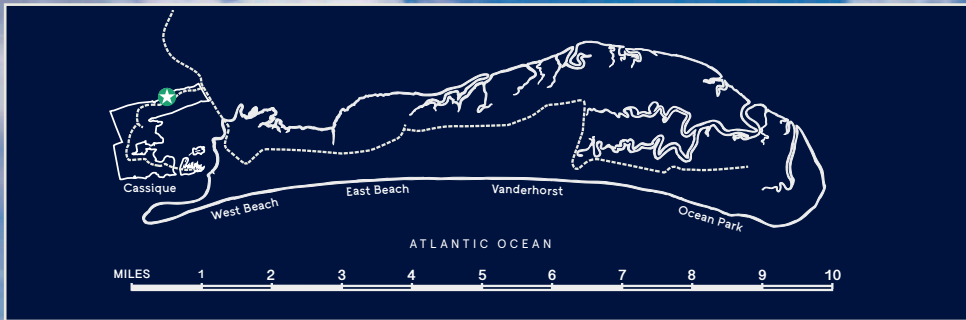
architect: Stan Dixon

landscape architect: Josh Dunn

heated square feet: 3,622

Great stretches of windows, expansive decks, and porches promise inspired entertaining, set against a backdrop of the Lowcountry's most magnificent landscapes. The home's open floor plan encourages social gatherings with its interconnected living, dining, and kitchen areas, all boasting direct access to the vast covered porch.





843.396.1522 | [kiawahisland.com](http://kiawahisland.com)

Visuals are representative only and may differ from completed product. Pricing, improvements, facilities, and programs are in formative stages and subject to change without prior notice. This information is deemed reliable but not guaranteed. 08/25



Upper Burn  
CASSIQUE

