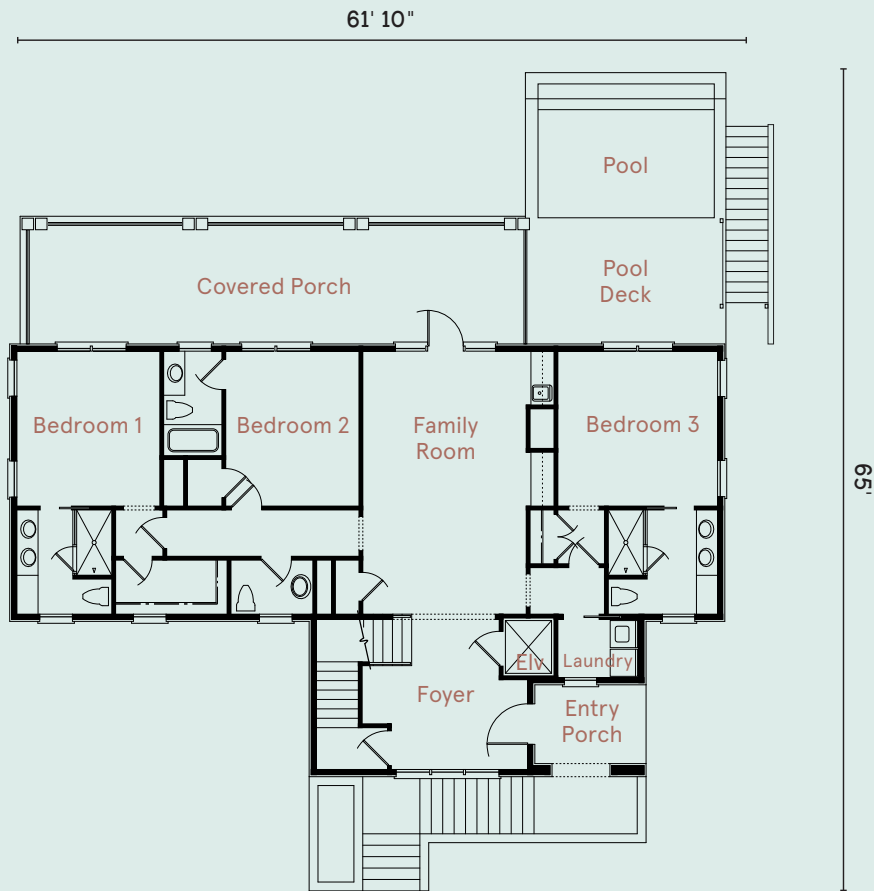


AILSA



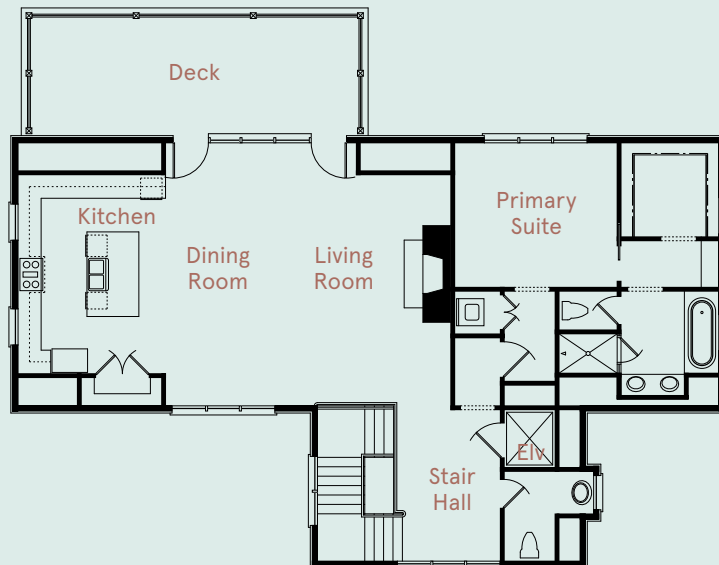
FIRST FLOOR

Entry Porch	10' x 7'	Bedroom 3	14' x 13'
Foyer	14' x 13'	Covered Porch	43' x 10'
Family Room	14' x 23'	Pool Deck	17' x 11'
Bedroom 1	12' x 13'	Pool	16' x 10'
Bedroom 2	12' x 13'		



SECOND FLOOR

Kitchen	13' x 17'	Primary Suite	14' x 13'
Dining Room	10' x 23'	Deck	29' x 10'
Living Room	15' x 23'	Stair Hall	9' x 13'



AILSA

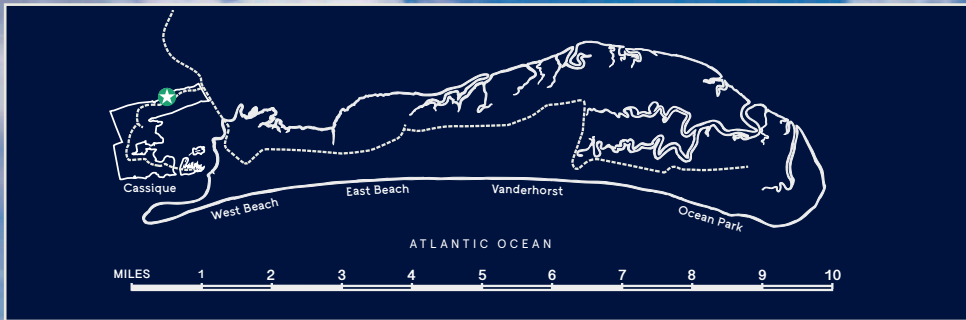
architect of record: Clay Shackelford

design architect: Amanda Mole

landscape architect: Josh Dunn

heated square feet: 3,397

A masterful reverse floor plan positions the main living areas on the second floor to maximize all-day enjoyment of the exquisite four-tiered views. In addition, the first floor's combination of three en suite bedrooms, generous family room, and expansive rear deck ensures that overnight guests enjoy their own private retreat.



843.396.1522 | kiawahisland.com

Visuals are representative only and may differ from completed product. Pricing, improvements, facilities, and programs are in formative stages and subject to change without prior notice. This information is deemed reliable but not guaranteed. 08/25



Upper Burn
CASSIQUE

