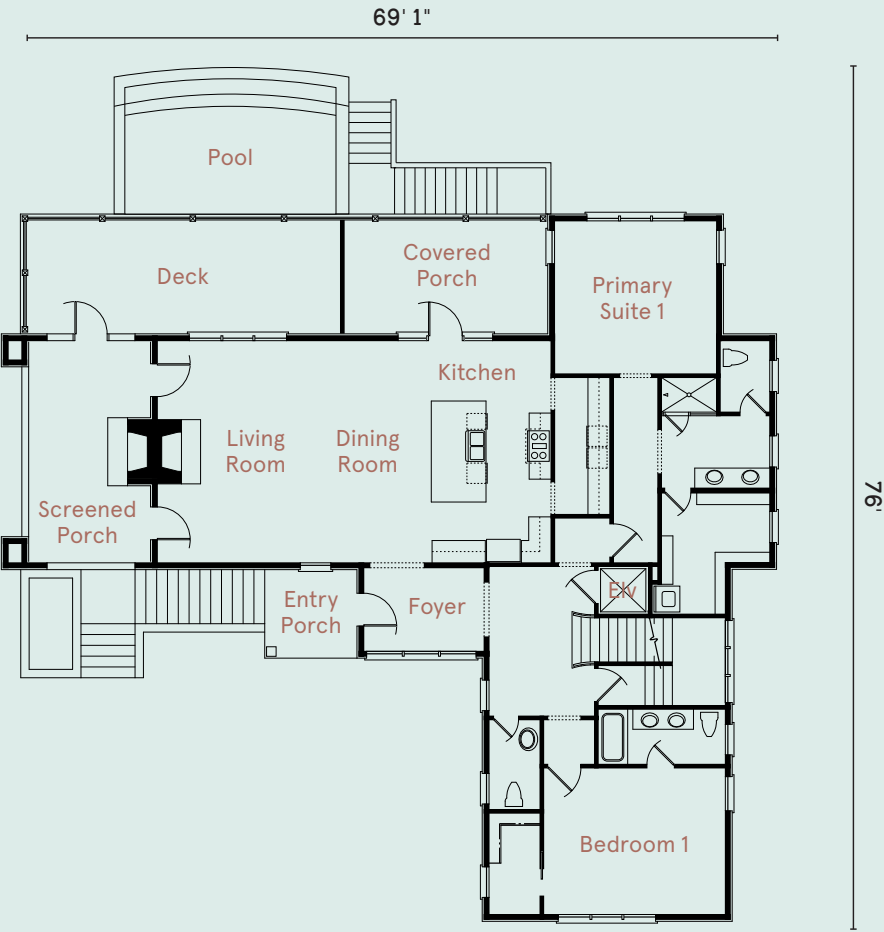


PRESTWICK



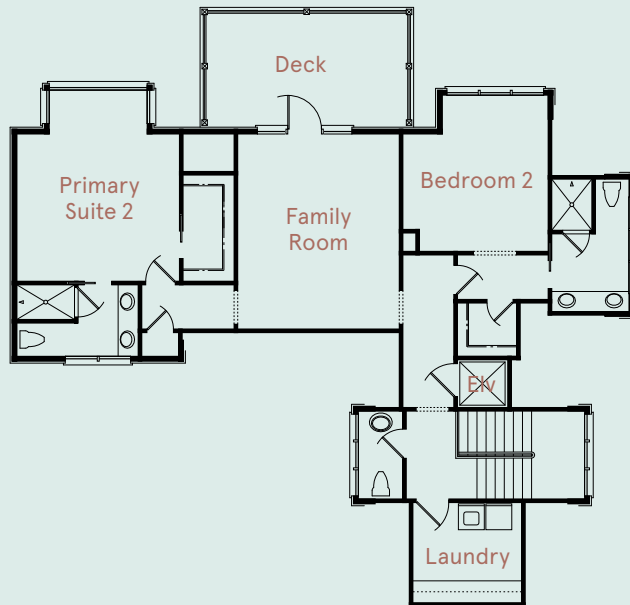
FIRST FLOOR

Entry Porch	8' x 8'	Bedroom 1	17' x 13'
Foyer	11' x 8'	Screened Porch	11' x 20'
Dining Room	10' x 20'	Deck	27' x 11'
Living Room	15' x 20'	Covered Porch	18' x 11'
Kitchen	11' x 20'	Pool	18' x 8'
Primary Suite 1	15' x 16'		



SECOND FLOOR

Primary Suite 2	15' x 18'	Family Room	15' x 18'
Bedroom 2	13' x 14'	Deck	19' x 10'



PRESTWICK

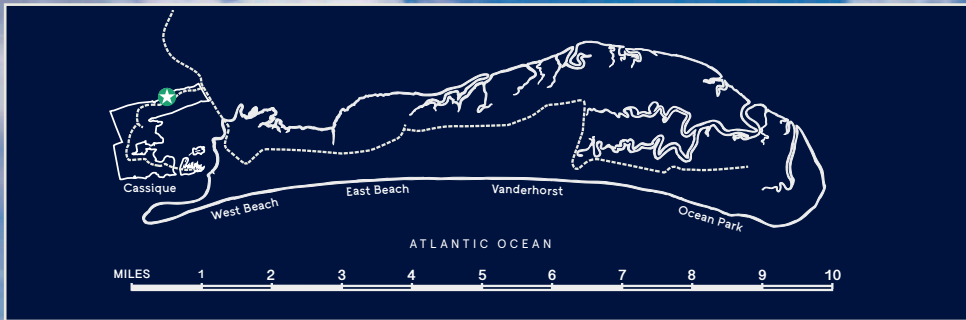
architect of record: Clay Shackelford

design architect: Amanda Mole

landscape architect: Josh Dunn

heated square feet: 3,642

The first floor's trio of gracious porches and a large second floor deck celebrate the pleasures of indoor/outdoor living and capture salty sea breezes throughout the day. And year-round entertainment and open-air dining are encouraged on both the covered porch and screened porch, complete with fireplace.



843.396.1522 | kiawahisland.com

Visuals are representative only and may differ from completed product. Pricing, improvements, facilities, and programs are in formative stages and subject to change without prior notice. This information is deemed reliable but not guaranteed. 08/25

