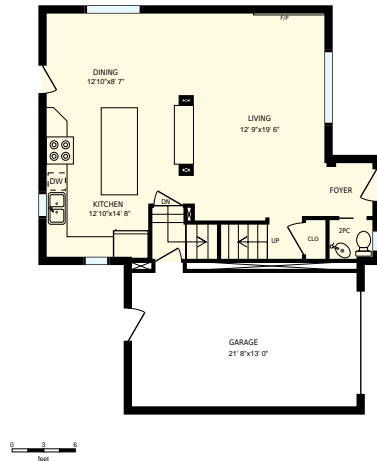




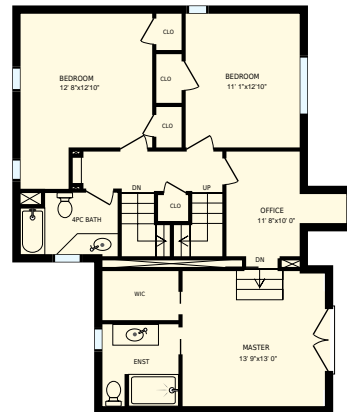
619 Earl St, Kingston, ON

Total Exterior Area Above Grade 2029 sq. ft.



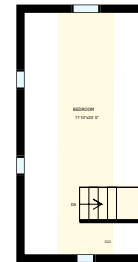
Main floor

Exterior Area 773 sq. ft.



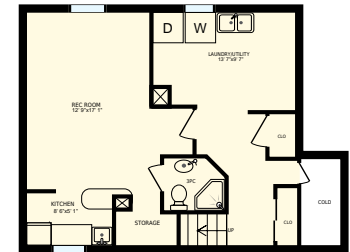
2nd floor

Exterior Area 1074 sq. ft.



Loft

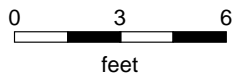
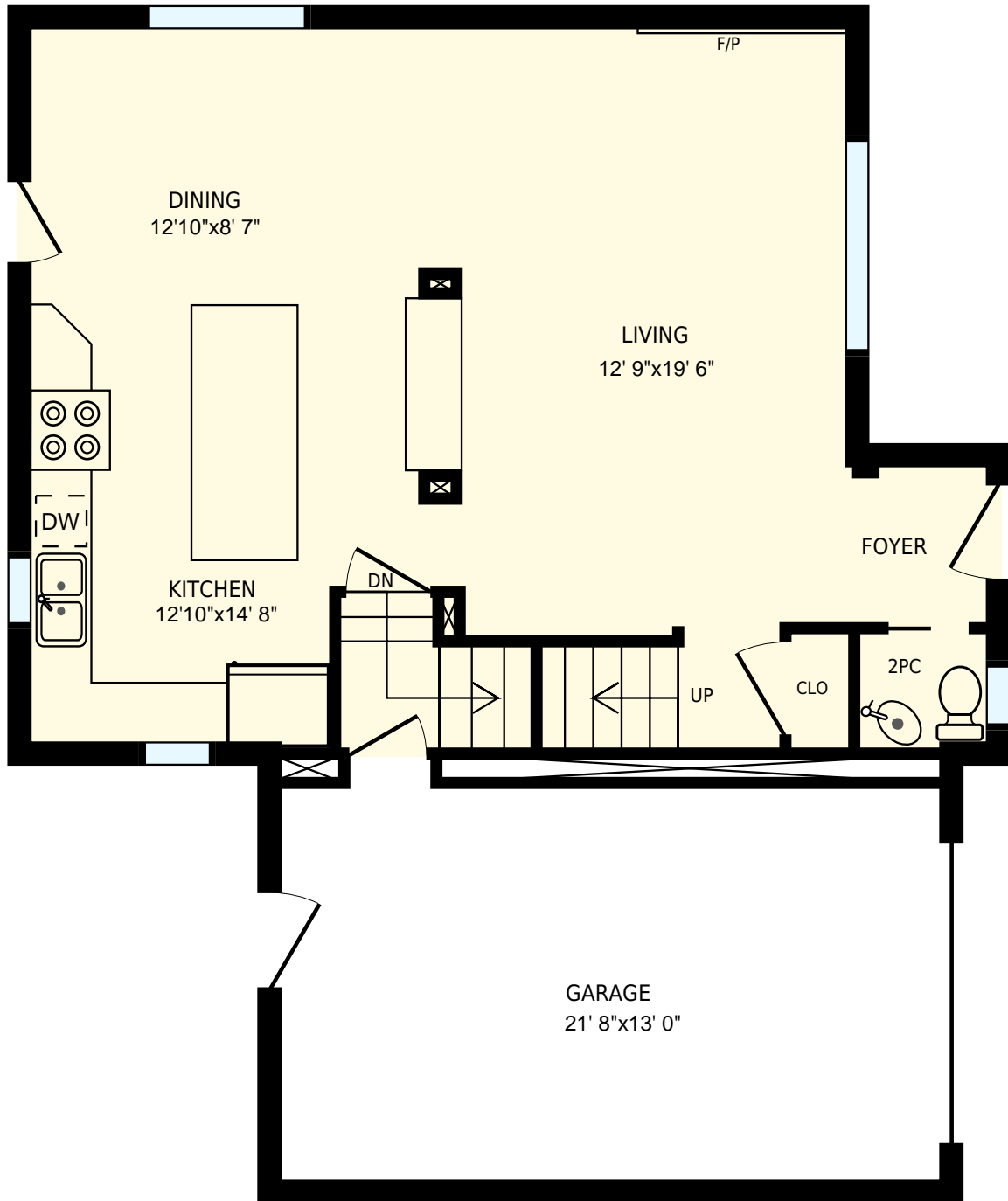
Exterior Area 182 sq. ft.



Basement

All room dimensions and floor areas must be considered approximate and are subject to independent verification. For method of measurement please see <https://youriguide.com/measure/>.

PREPARED FOR:




619 Earl St, Kingston, ON

PREPARED FOR:

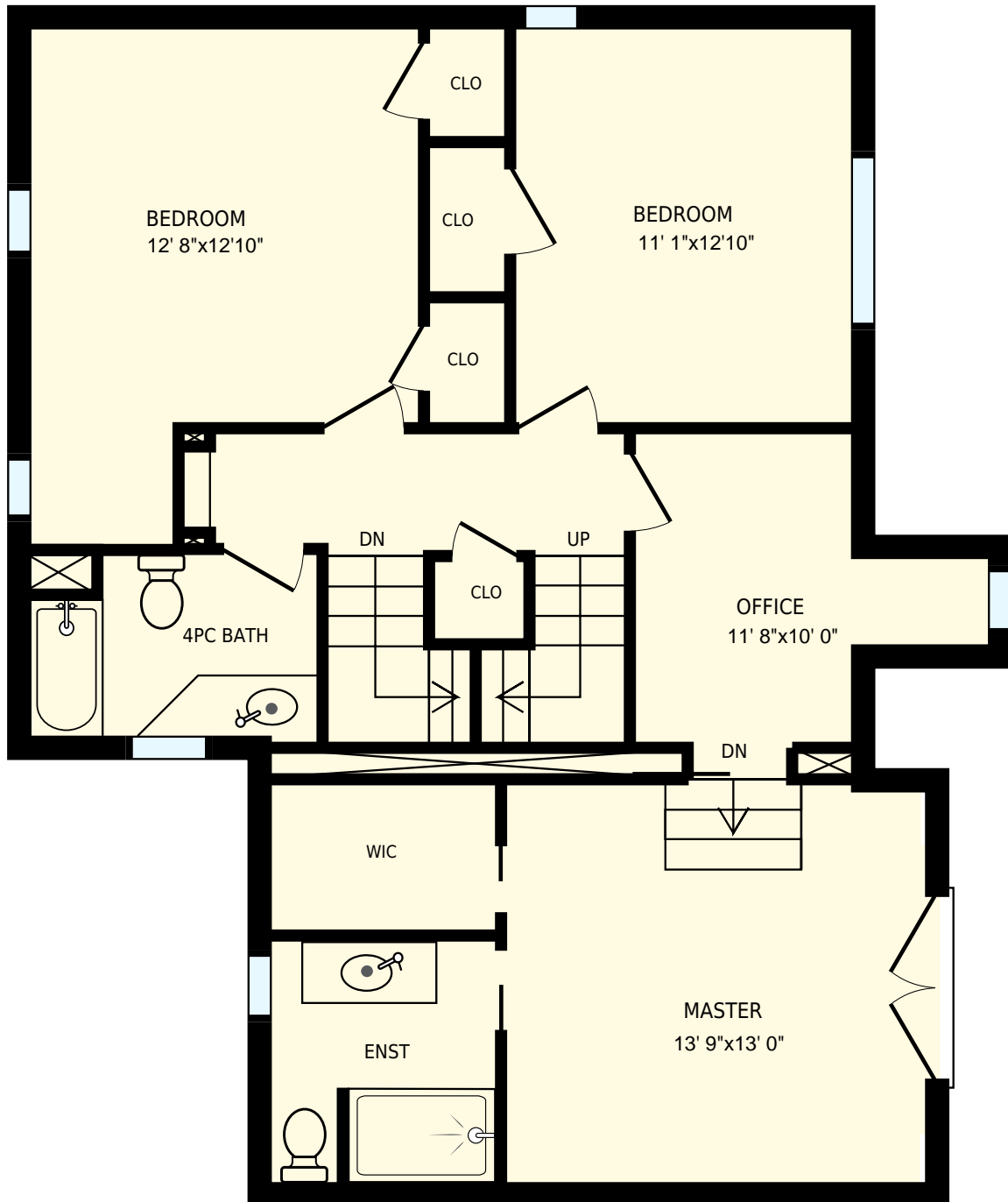
Main floor

Interior Area 679 sq. ft.
Exterior Area 773 sq. ft.

 Included Area

PREPARED ON:
Jun, 2017

All room dimensions and floor areas must be considered approximate and are subject to independent verification.
For method of measurement please see <https://youriguide.com/measure/>.

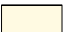


619 Earl St, Kingston, ON

PREPARED FOR:

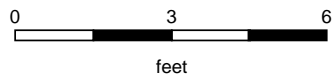
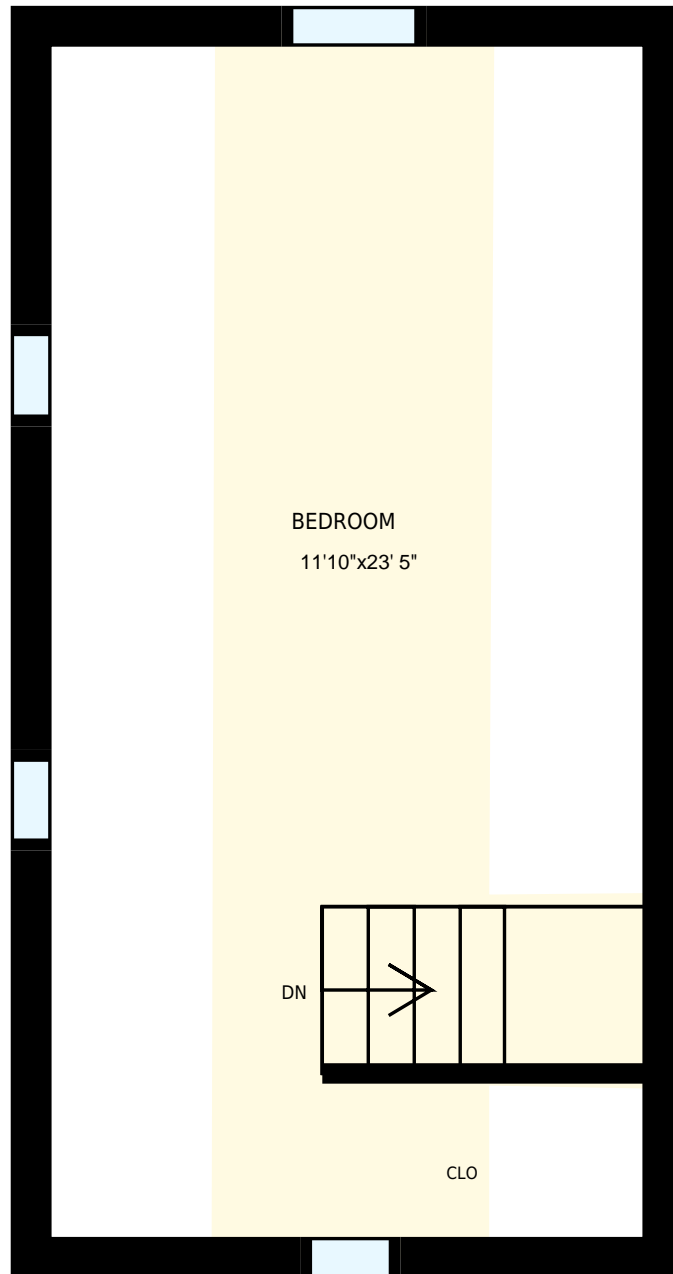
2nd floor

Interior Area 952 sq. ft.
Exterior Area 1074 sq. ft.

 Included Area

PREPARED ON:
Jun, 2017

All room dimensions and floor areas must be considered approximate and are subject to independent verification.
For method of measurement please see <https://youriguide.com/measure/>.




619 Earl St, Kingston, ON

PREPARED FOR:

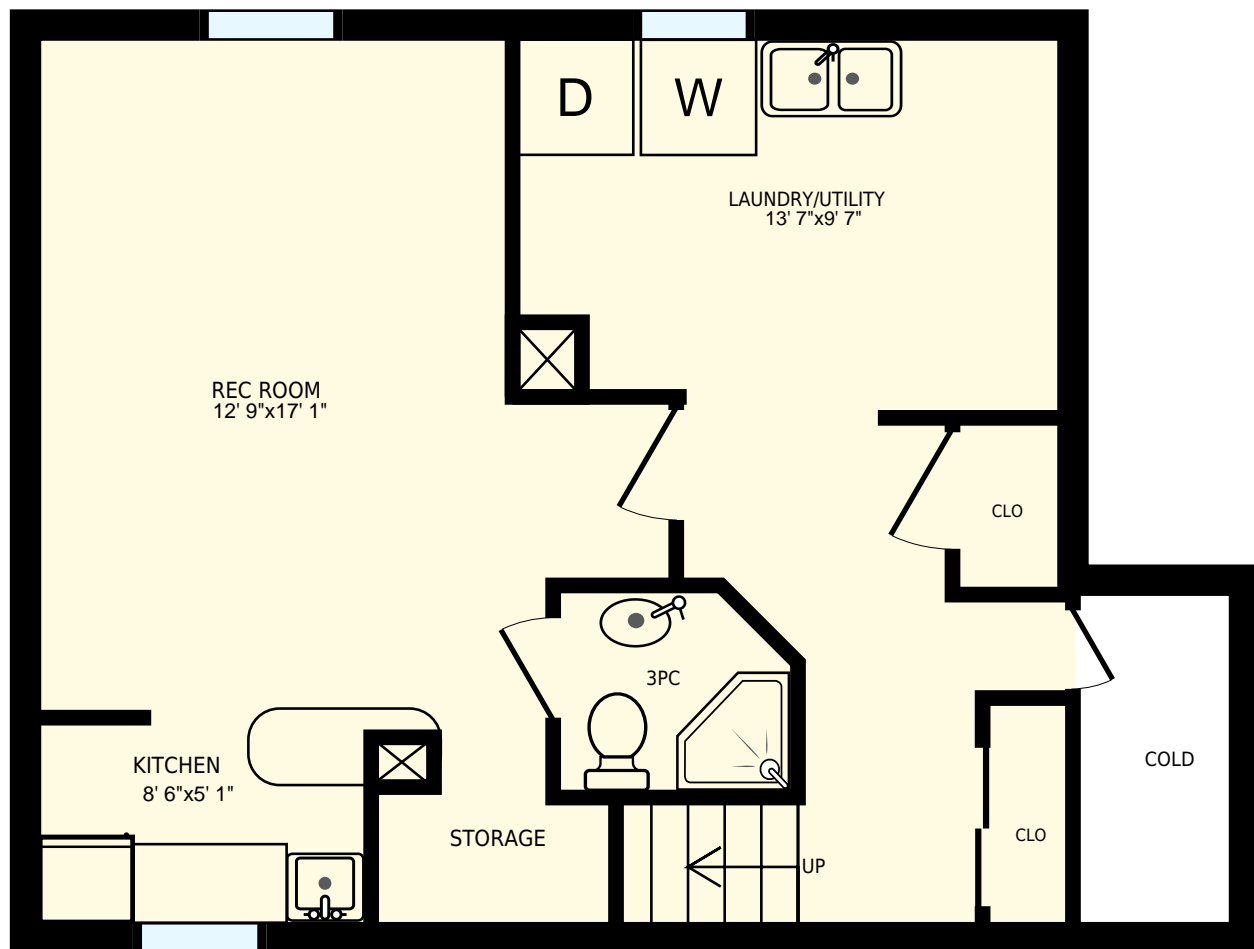
Loft

Interior Area 128 sq. ft.
Exterior Area 182 sq. ft.

 Included Area

PREPARED ON:
Jun, 2017

All room dimensions and floor areas must be considered approximate and are subject to independent verification.
For method of measurement please see <https://youriguide.com/measure/>.



619 Earl St, Kingston, ON

PREPARED FOR:

Basement

Interior Area 588 sq. ft.
Exterior Area

 Included Area

PREPARED ON:
Jun, 2017

All room dimensions and floor areas must be considered approximate and are subject to independent verification.
For method of measurement please see <https://youriguide.com/measure/>.