

# FOR LEASE



1643 N. Hacienda Blvd.,  
La Puente, CA 91744



For more information please contact:

## Overview

Asking Price	Negotiable	Available	+/- 3,750 SF
Lease Type	NNN	Lot Size	13,000 SF

## Property Features

- Parking: abundant spaces available
- Diverse tenant mix
- Anchor tenants: 99 Cents Only, Fallas Paredes, Planet Fitness and Burger King
- Excellent demographics and plenty of residents in the area
- Easy access to the 605 & 10 freeway
- Ideal for prospective medical or dental offices

Demographics	1 Mile	3 Mile	5 Mile
Population	31,422	229,470	517,750
Households	7,654	56,536	131,012
Average Household Income	\$70,611	\$73,212	\$76,308
Population Growth	2.63%	2.65%	2.95%
Hispanic Origin	73.58%	74.29%	67.76%

## Sam Kangavari

Senior Vice President

BRE: 01846336

D: 213.802.0222

M: 310.801.0631

E: skangavari@rosanopartners.com

## Hernan Escobar

Associate

BRE: 01102417

D: 213.802.0324

M: 213.220.4228

E: Hescobar@rosanopartners.com

## Rosano Partners

Los Angeles Office

700 S. Flower St, Suite 2526

Los Angeles, CA 90017

www.RosanoPartners.com

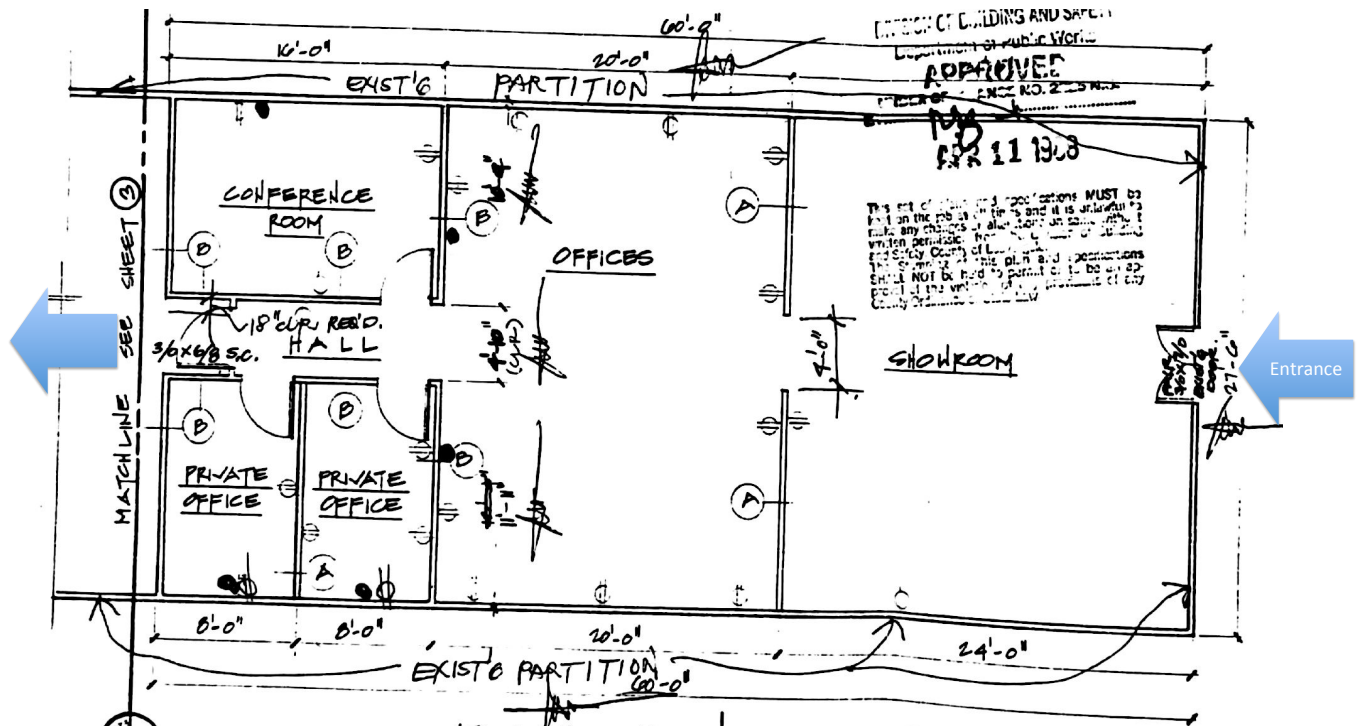
# FOR LEASE



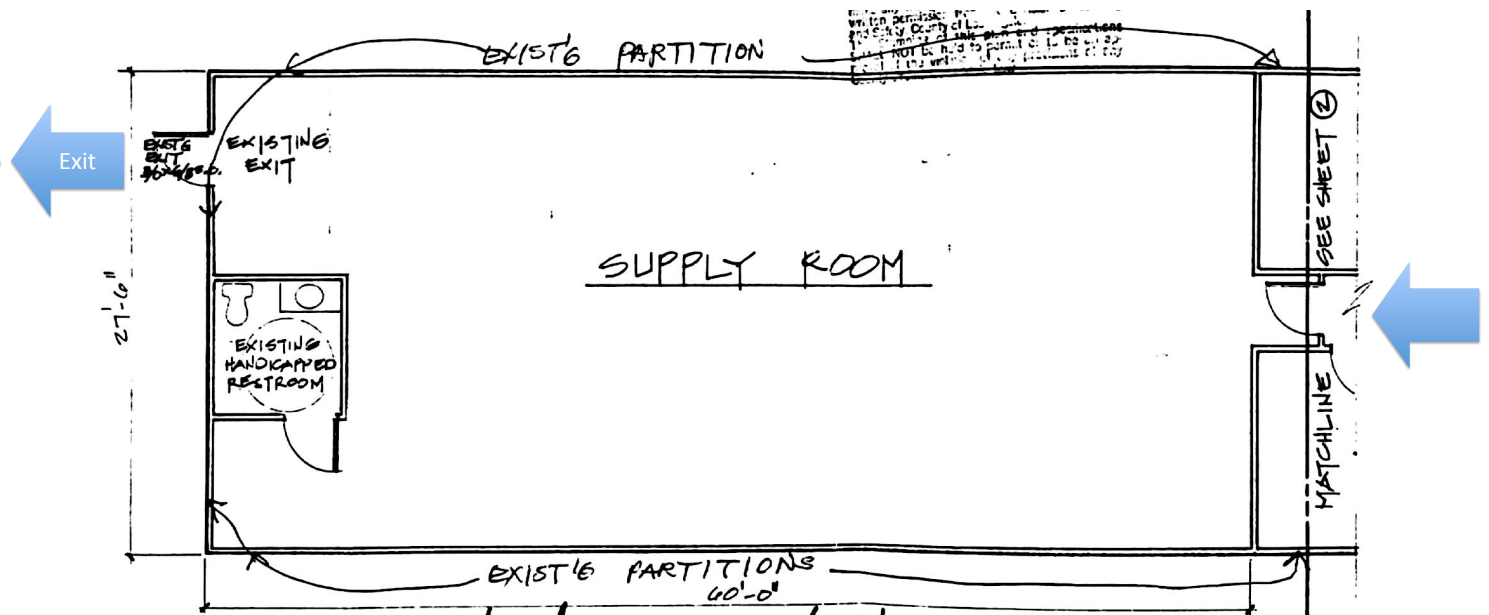
1643 N. Hacienda Blvd.,  
La Puente, CA 91744

## Floor Plan

### A



### B

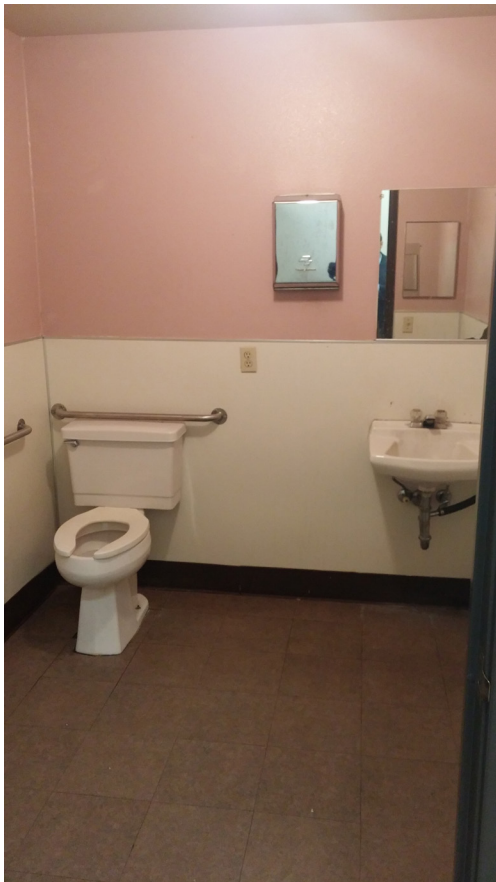




# FOR LEASE



1643 N. Hacienda Blvd.,  
La Puente, CA 91744

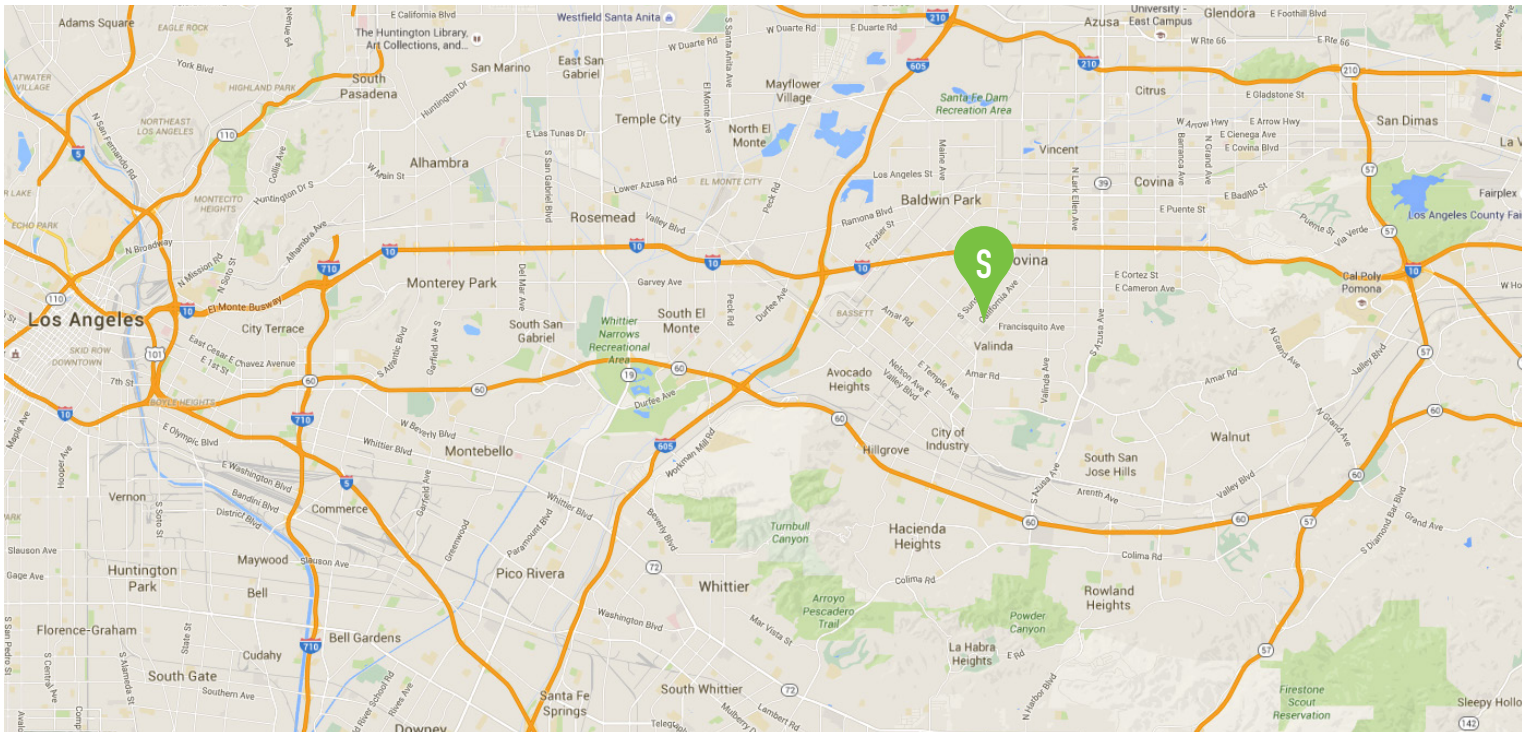




# FOR LEASE



1643 N. Hacienda Blvd.,  
La Puente, CA 91744



©2016, Rosano Partners. We obtained the information above from sources we believe to be reliable. However, we have not verified its accuracy and make no guarantee, warranty or representation about it. It is submitted subject to the possibility of errors, omissions, change of price, rental or other conditions, prior sale, lease or financing, or withdrawal without notice. We include projections, opinions, assumptions or estimates for example only, and they may not represent current or future performance of the property. You and your tax and legal advisors should conduct your own investigation of the property and transaction.