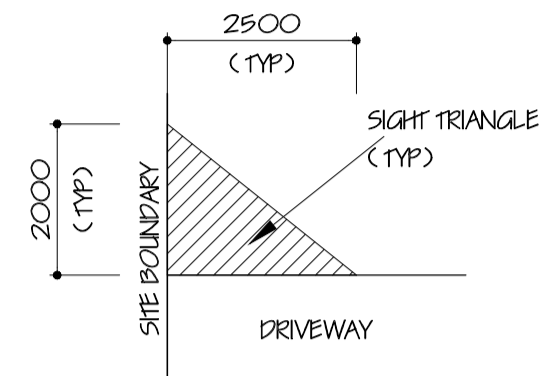
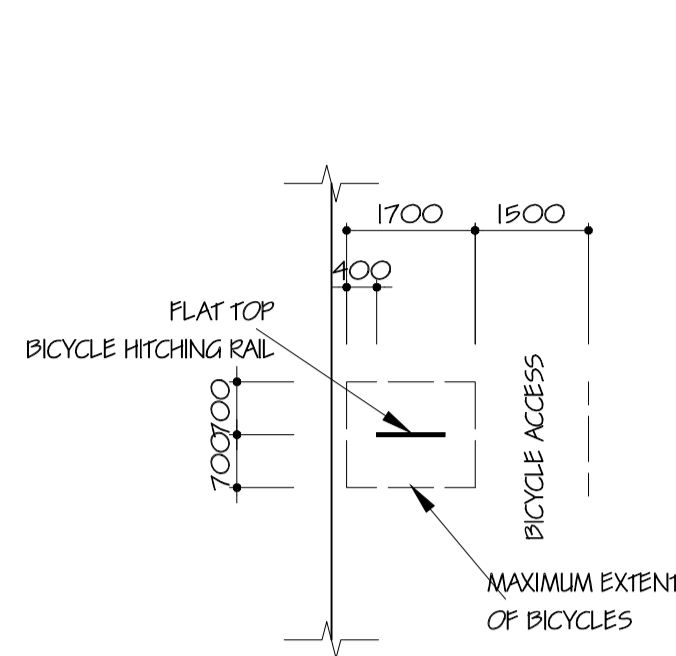


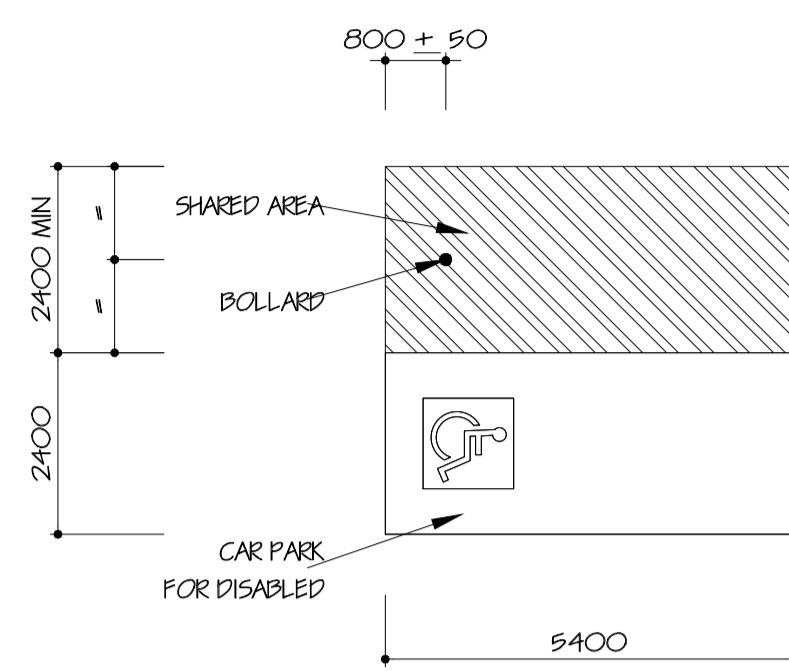
NOTE:
 EXTENT OF 2000 x 2500 SIGHT TRIANGLE
 TO BE IN ACCORDANCE WITH AS 2890.2 2002, FIGURE 3.4
 SITE TRIANGLE TO BE KEPT CLEAR OF VISUAL OBSTRUCTIONS.
 ANY LANDSCAPING WITHIN SITE TRIANGLES TO BE MAXIMUM OF
 900mm IN HEIGHT AT MATURE GROWTH LEVEL.



TYPICAL LINE OF SIGHT TRIANGLE DETAIL
 (Scale 1:100)



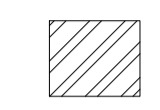
BICYCLE PARKING AREA DETAIL
 Scale 1:100



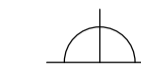
TYPICAL CAR PARK FOR DISABLED DETAIL
 (Scale 1:100)



DISABLED SIGNAGE
 TO COMPLY WITH
 BCA D3.6 AND
 AS 2890.6-2009



EXTENT OF PATHWAY,
 SHARED AREA AND CIRCULATION
 SPACE FOR DISABLED

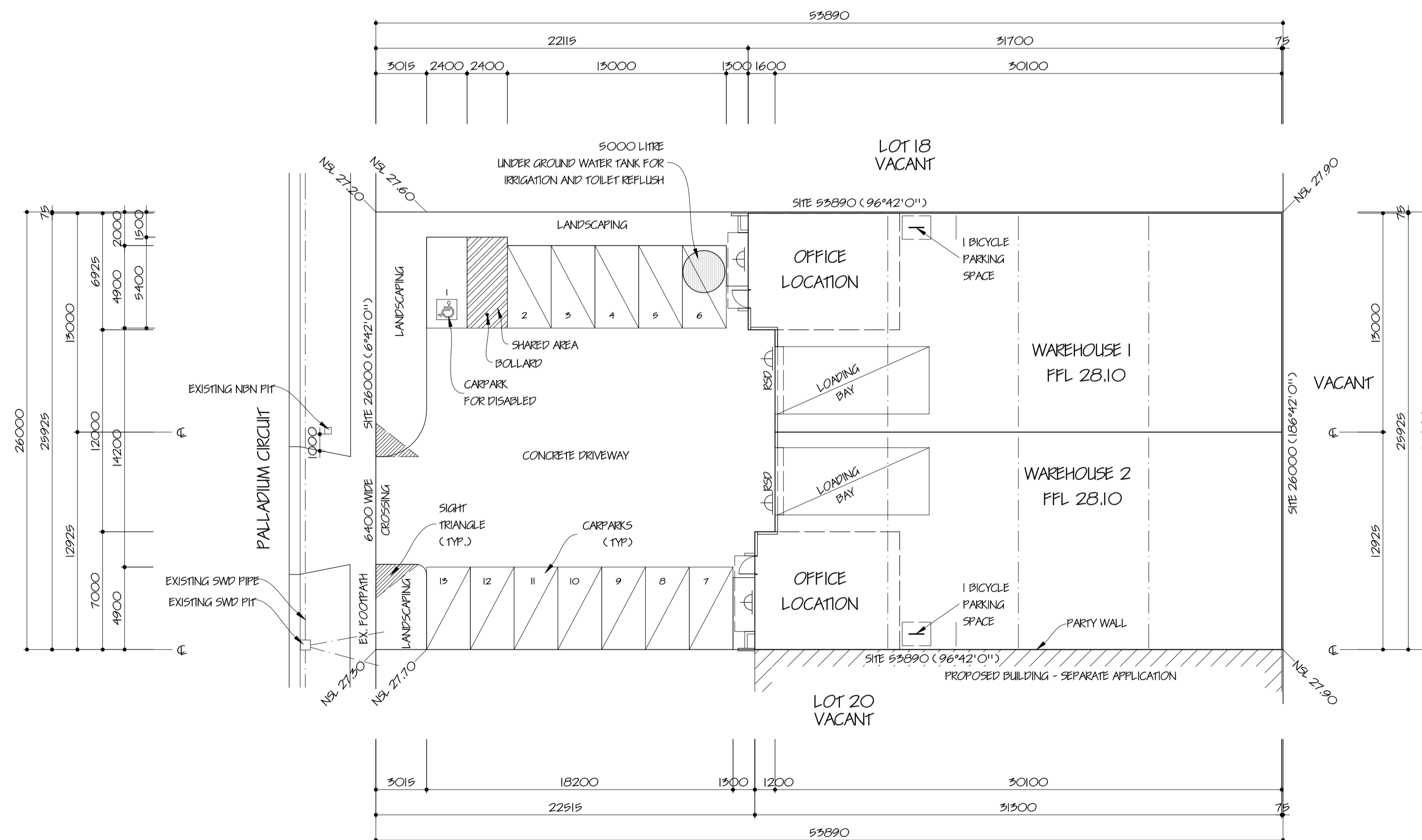


150 WATT METAL HALIDE
 FLOOD LIGHT
 TO BE BAFFLED TO LIMIT LIGHT
 SPILL BEYOND SITE BOUNDARIES

MARKETING AREAS:

SITE AREA:	1401 m ²
WAREHOUSE 1:	402 m ²
WAREHOUSE 2:	397 m ²
TOTAL:	799 m²
CARPARKS:	13 OFF

- ALL CARPARKS TO BE 2600 W x 4900 L MIN
- CARPARKS FOR DISABLED TO BE 2400 W x 5400 L MIN WITH 2400 W SHARED PATHWAY
- ALL LOADING BAYS TO BE MINIMUM 4000 W x 5500 H x 9000 L
- ALL DRIVEWAYS & CARPARKS TO HAVE 150mm THICK REINFORCED CONCRETE
- PATHWAYS TO BE CONCRETE PAVED UNLESS OTHERWISE NOTED
- RAMPS FOR DISABLED TO COMPLY WITH AS 1428.1 - 2009
- ALL LEVELS TO AHD



SITE DEVELOPMENT PLAN

**PRELIMINARY ISSUE
 NOT FOR CONSTRUCTION**

NO.	REVISION

All levels and dimensions in this document are Copyright and is supplied on the condition that it is not to be used for any other purpose or copied or communicated to any other person without the prior permission of Stephen D'Andrea Pty. Ltd.

STEPHEN D'ANDREA PTY. LTD.
 A.C.N. 005 676 568
 SUITE 9 / 84 - 90 LAKEWOOD BOULEVARD
 BRAESIDE 3195
 TELEPHONE 9587 5000
 FAX 9588 2020
 MOBILE (0418) 314 021
 EMAIL design@stephendandrea.com.au
 WEB SITE www.stephendandrea.com.au

PROJECT
 PROPOSED WAREHOUSE AND OFFICE
 AT LOT 19 PALLADIUM CIRCUIT
 CLYDE NORTH

CLIENT

DATE	APRIL '19	SCALE	1:200
DRAWN	SM	SHEET	1 OF
DRG No	6022/19	AI	ISSUE

