

The Astera

INTERIORS BY ASTON MARTIN



DARGLOBAL

Joint Development Partner



ARVEES

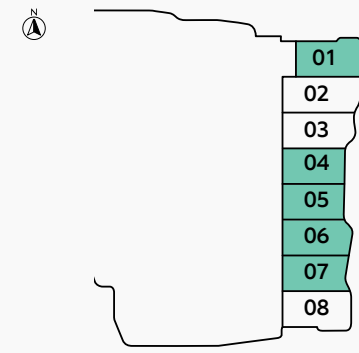
THE MOST DESIRABLE LUXURY RESIDENCES IN THE WORLD

FLOOR PLANS

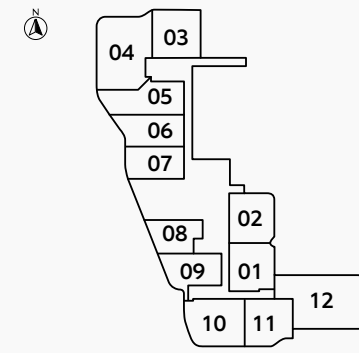
3 BEDROOMS VILLA TYPE A

SEA & ISLAND VIEW

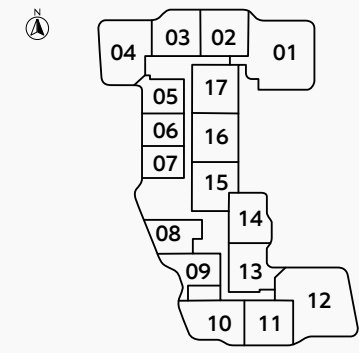
FLOOR
GROUND



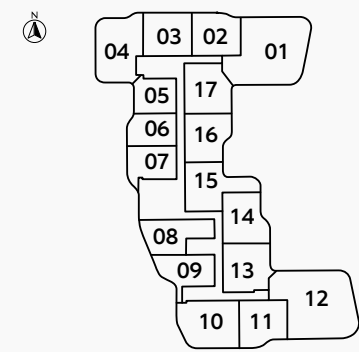
FLOOR
2



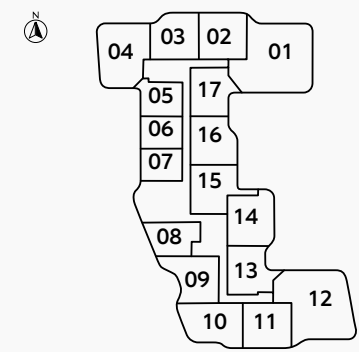
FLOOR
3



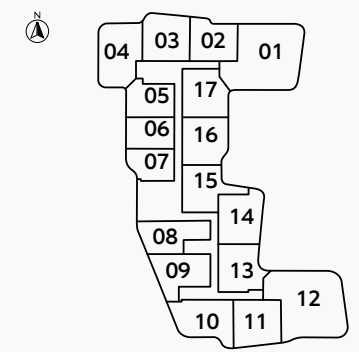
FLOORS
4, 8, 11, 13, 16



FLOORS
5, 7, 10, 12, 14



FLOORS
6, 9, 15



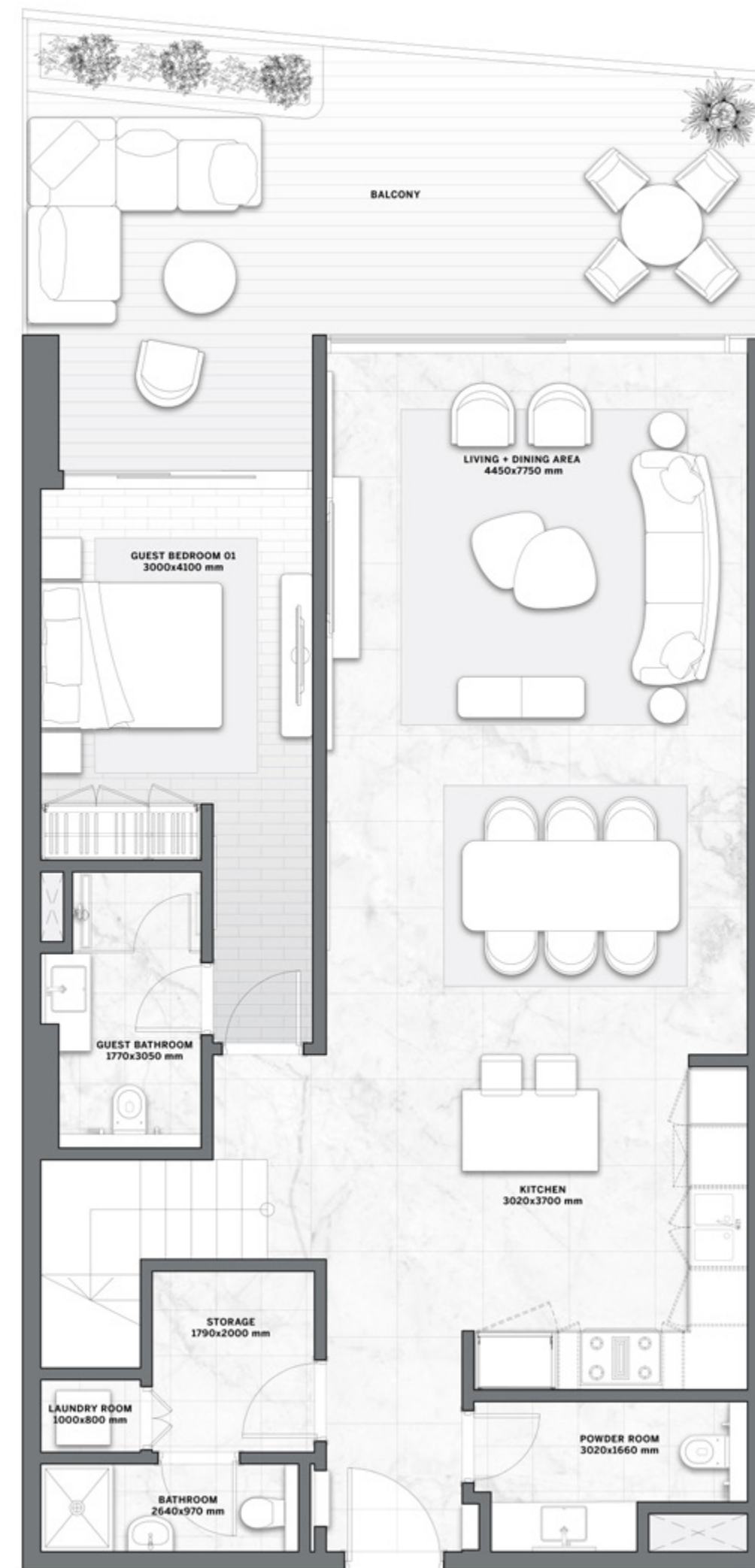
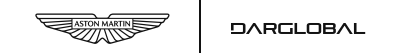
BEACH FRONT VIEW

RESIDENCE	SQM	SQFT
Internal Area	195	2,098
Balcony Area	33 - 44	360 - 476
Total Built up Area	228 - 239	2,456 - 2,573

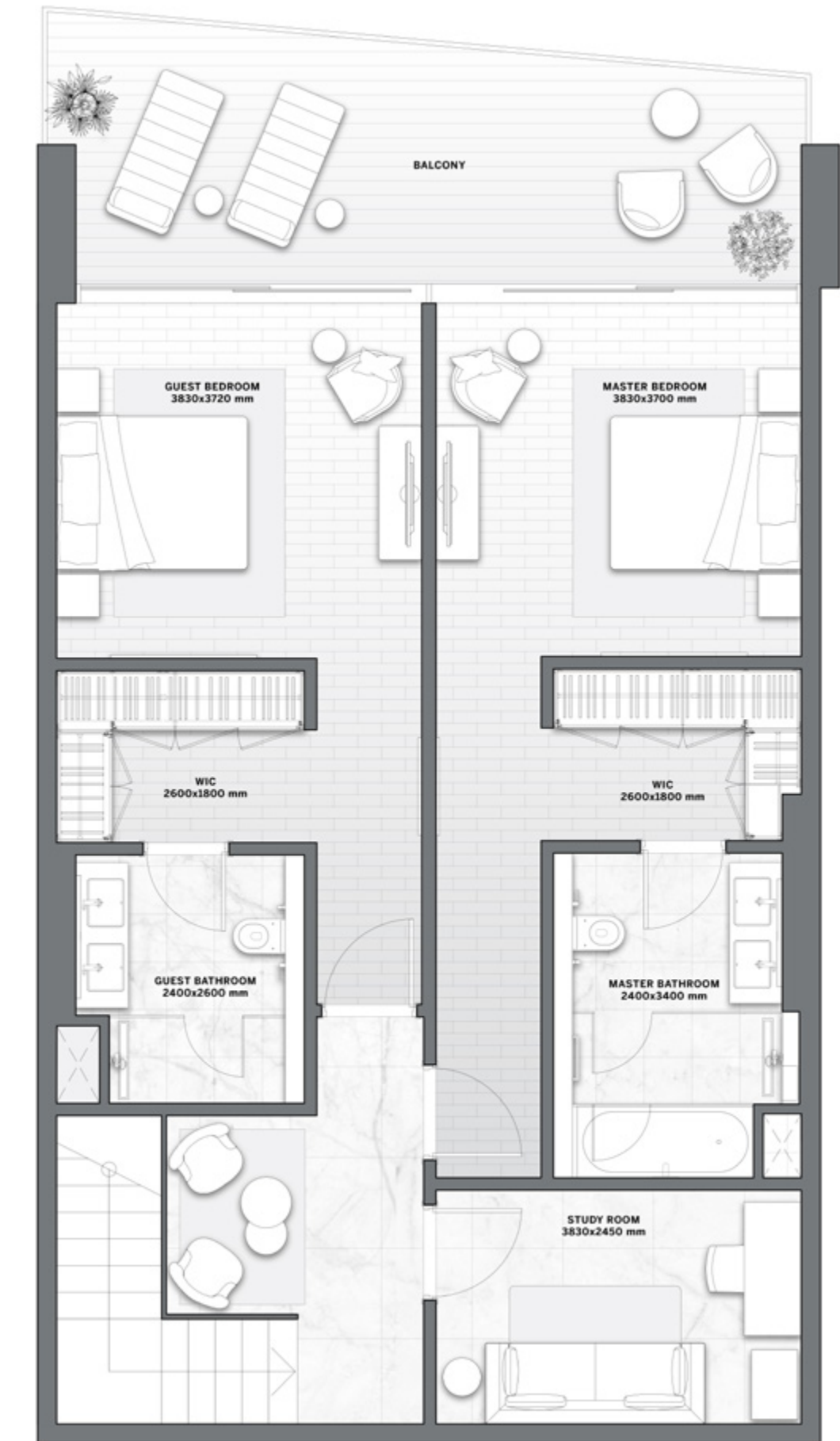
Disclaimer: All pictures, plans, layouts, information, data and details included in this brochure are indicative only and may change at any time up to the final 'as built' status in accordance with final designs of the project, regulatory approvals and planning permissions. All accessories and interior finishes such as wallpaper, chandeliers, furniture, electronics, white goods, curtains, hard and soft landscaping, pavements, features, gym, and other elements displayed in the brochure, or between the plot boundary, are not part of the unit and are shown for illustrative purposes only.

The Astera

INTERIORS BY ASTON MARTIN



LOWER LEVEL



UPPER LEVEL

3 BEDROOMS VILLA TYPE B

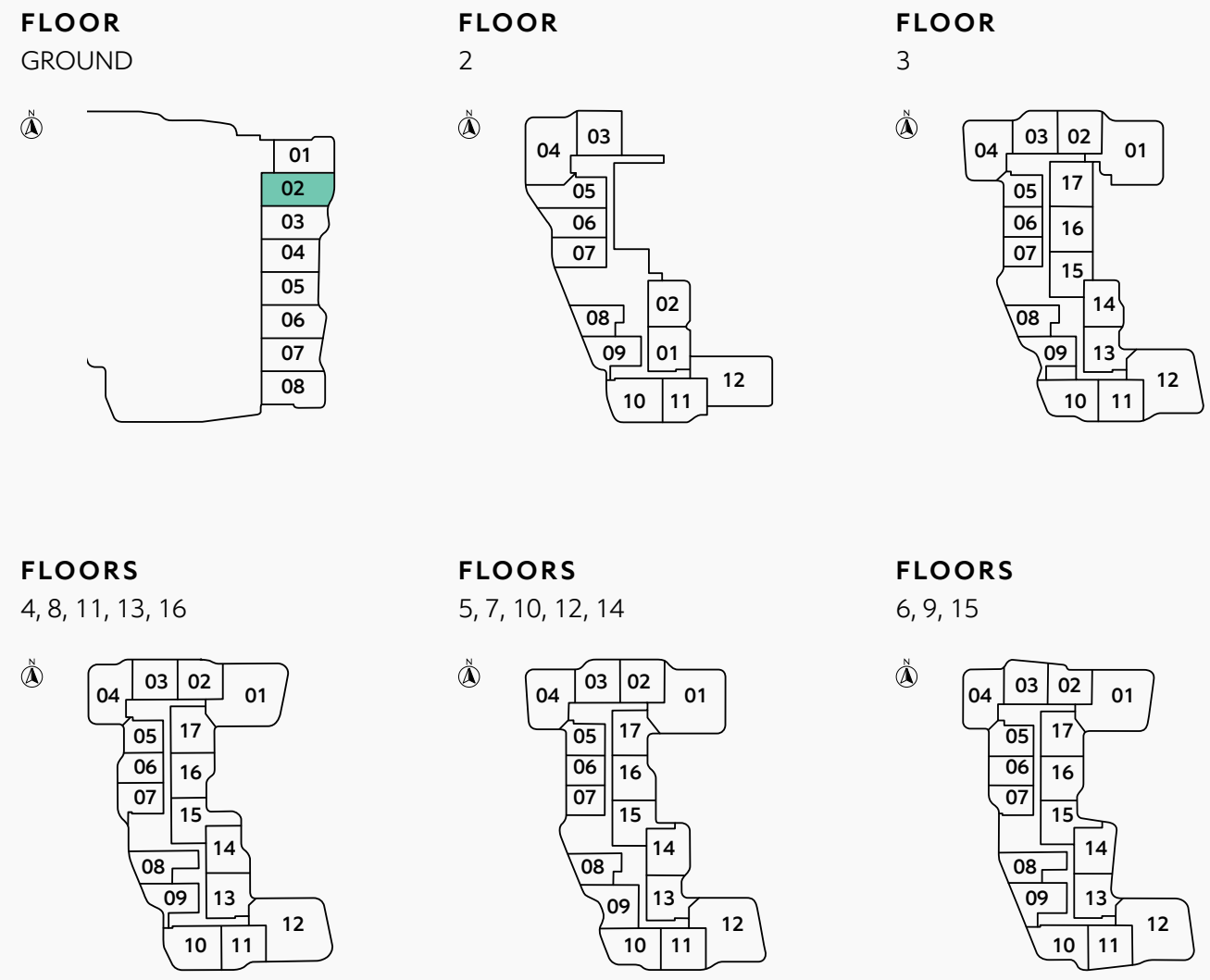
The Astera

INTERIORS BY ASTON MARTIN



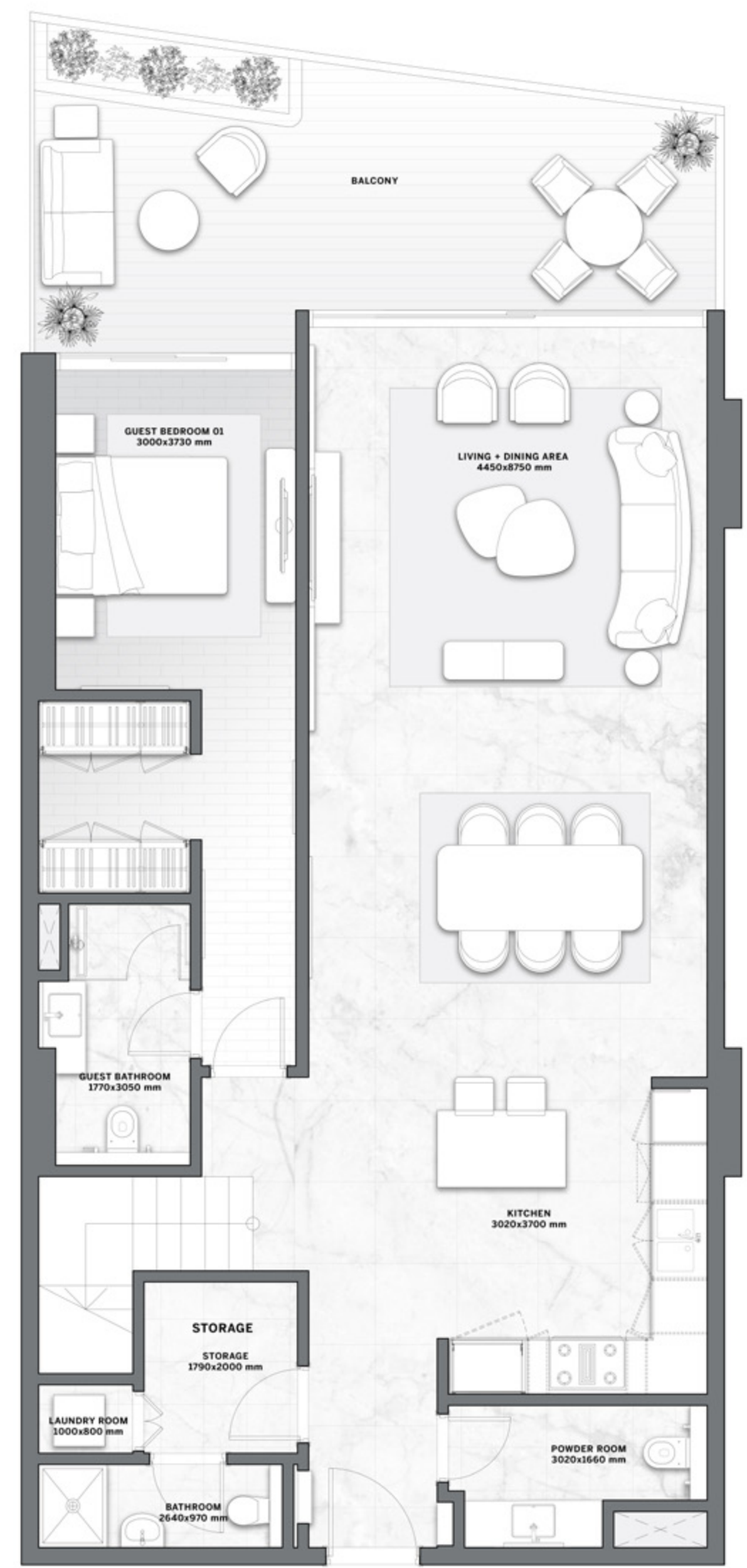
SEA & ISLAND VIEW

BEACH FRONT VIEW

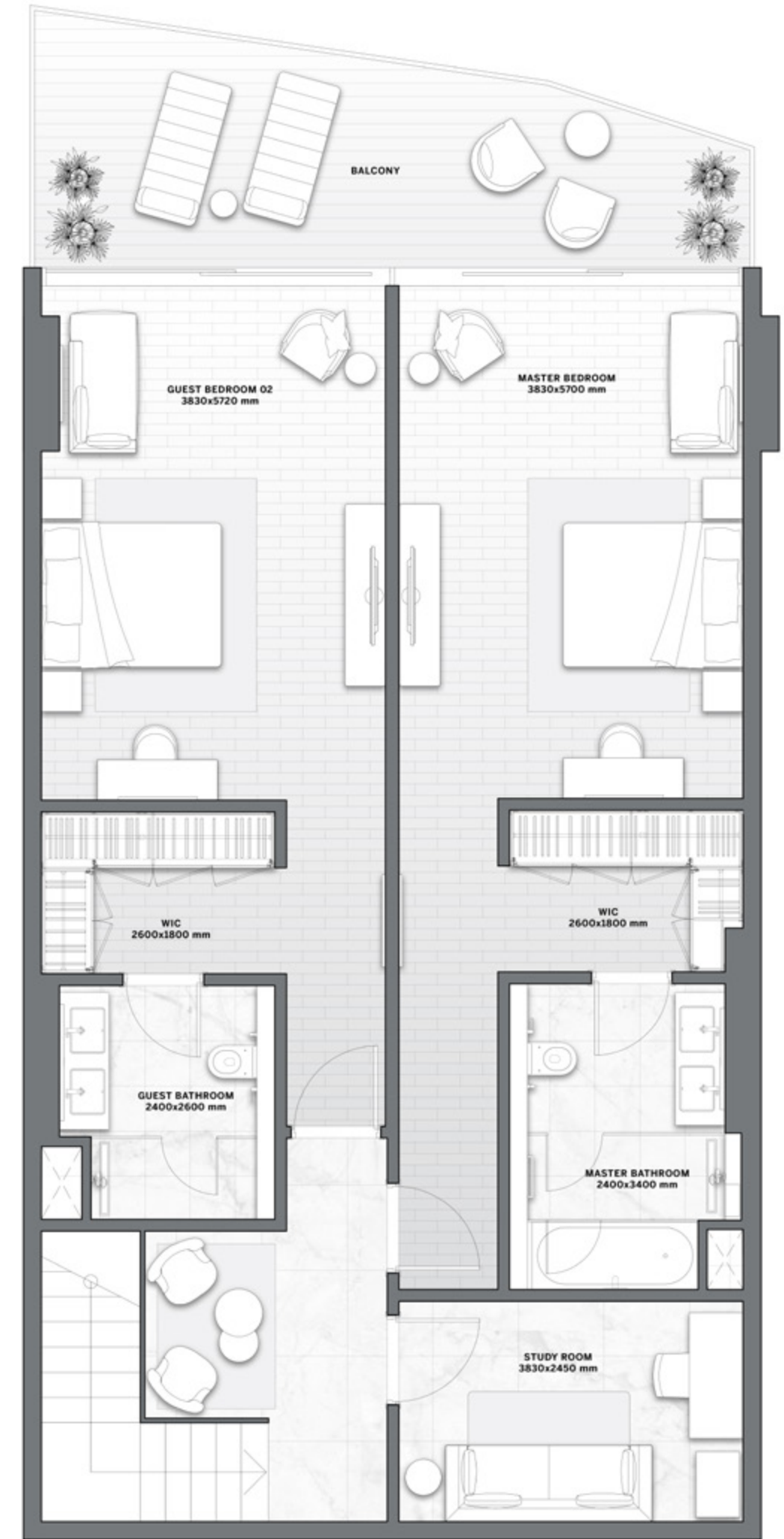


RESIDENCE	SQM	SQFT
Internal Area	226	2,431
Balcony Area	41	445
Total Built up Area	267	2,876

Disclaimer: All pictures, plans, layouts, information, data and details included in this brochure are indicative only and may change at any time up to the final 'as built' status in accordance with final designs of the project, regulatory approvals and planning permissions. All accessories and interior finishes such as wallpaper, chandeliers, furniture, electronics, white goods, curtains, hard and soft landscaping, pavements, features, gym, and other elements displayed in the brochure, or between the plot boundary, are not part of the unit and are shown for illustrative purposes only.



LOWER LEVEL

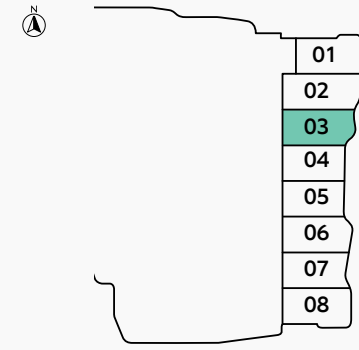


UPPER LEVEL

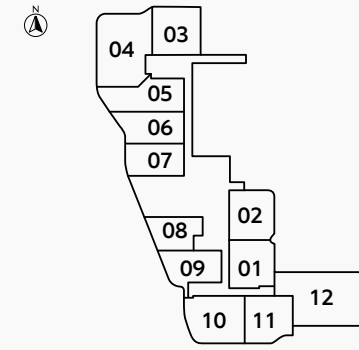
3 BEDROOMS VILLA TYPE C

SEA & ISLAND VIEW

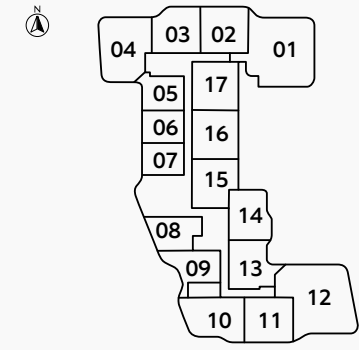
FLOOR
GROUND



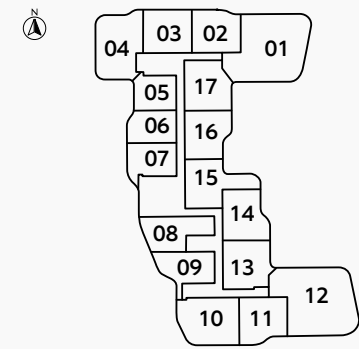
FLOOR
2



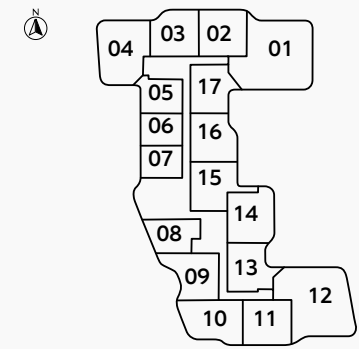
FLOOR
3



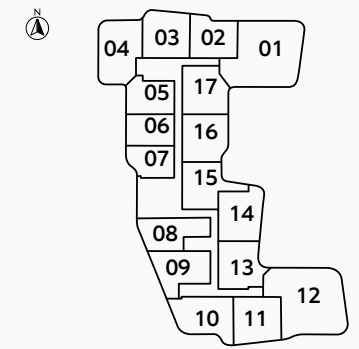
FLOORS
4, 8, 11, 13, 16



FLOORS
5, 7, 10, 12, 14



FLOORS
6, 9, 15



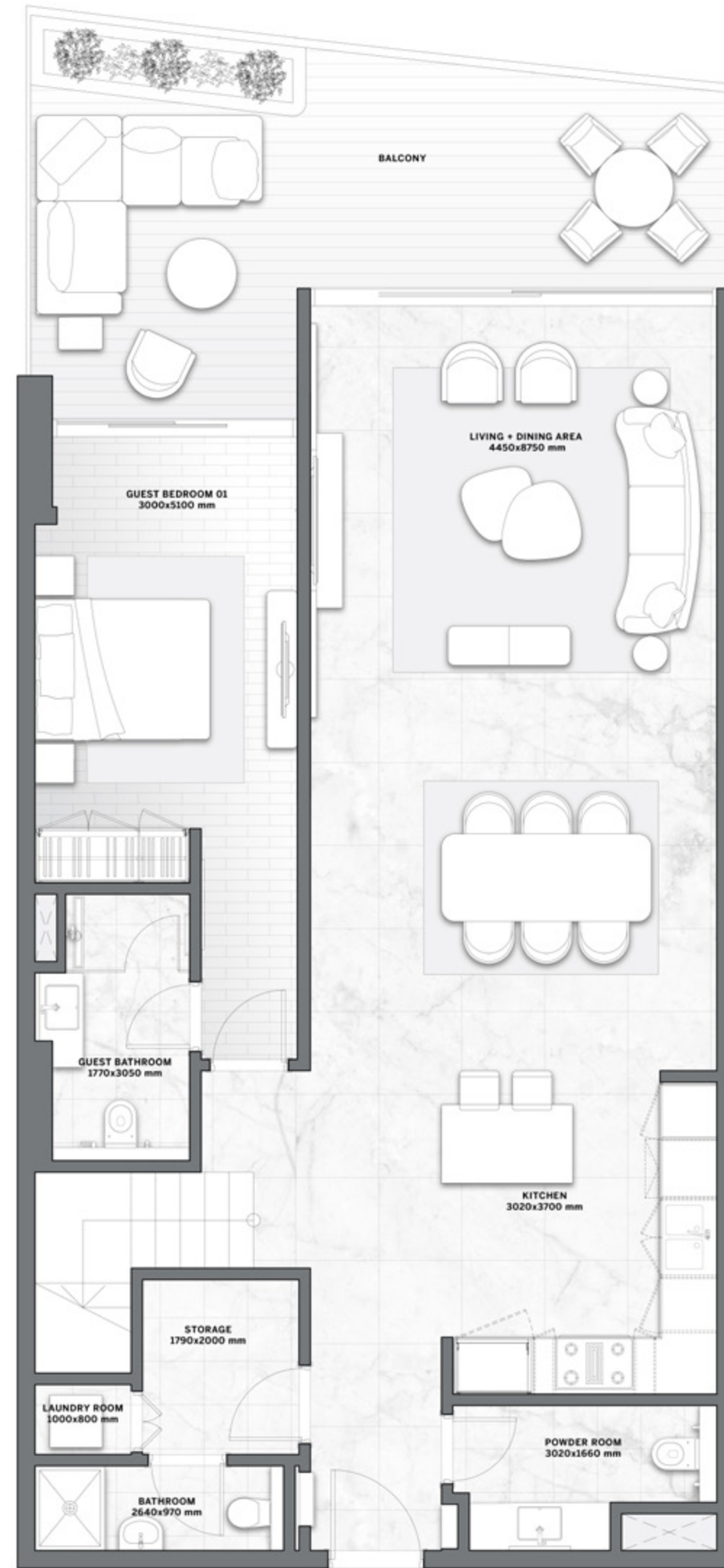
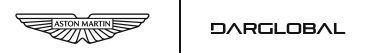
BEACH FRONT VIEW

RESIDENCE	SQM	SQFT
Internal Area	211	2,269
Balcony Area	41	440
Total Built up Area	252	2,709

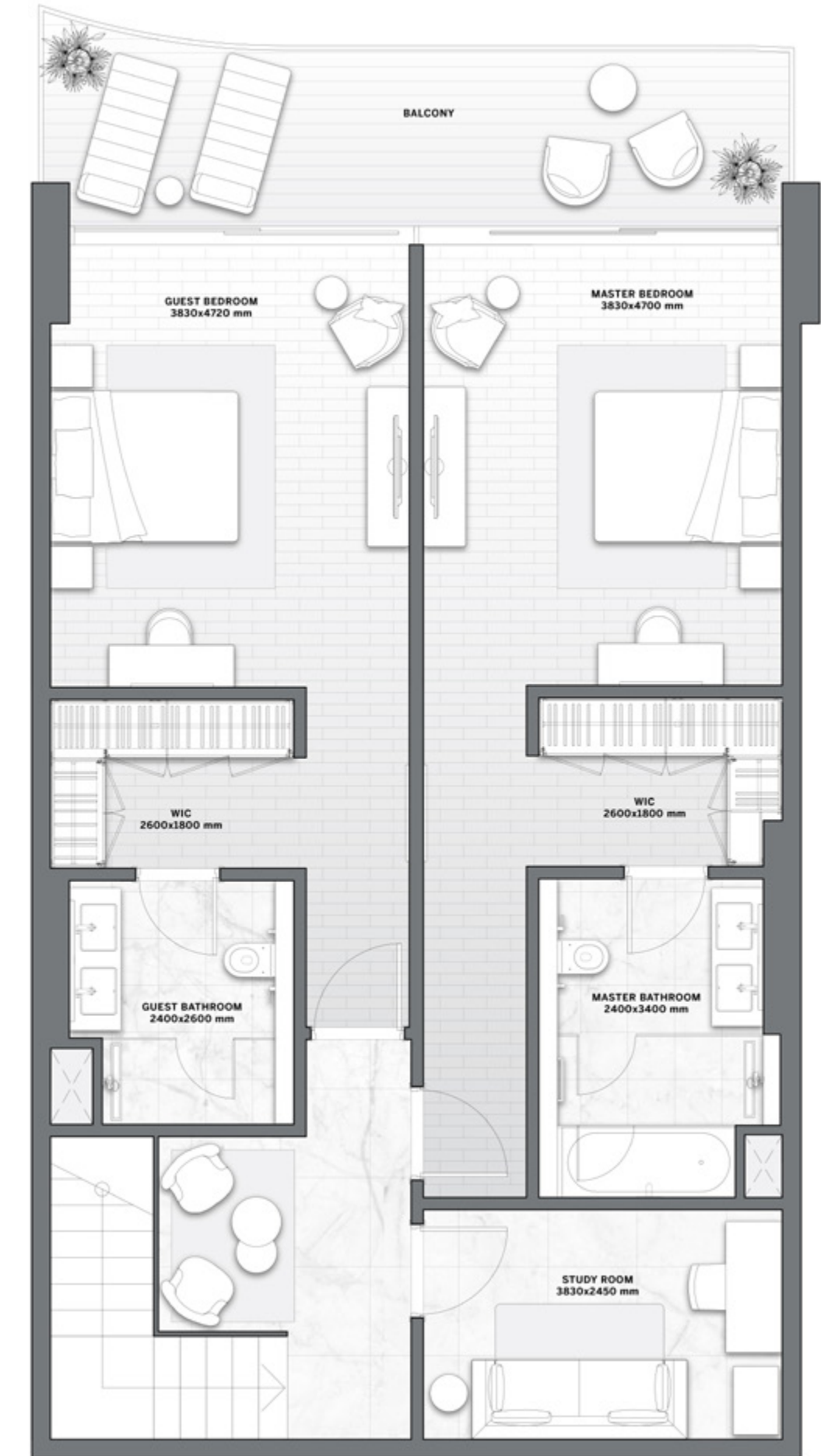
Disclaimer: All pictures, plans, layouts, information, data and details included in this brochure are indicative only and may change at any time up to the final 'as built' status in accordance with final designs of the project, regulatory approvals and planning permissions. All accessories and interior finishes such as wallpaper, chandeliers, furniture, electronics, white goods, curtains, hard and soft landscaping, pavements, features, gym, and other elements displayed in the brochure, or between the plot boundary, are not part of the unit and are shown for illustrative purposes only.

The Astera

INTERIORS BY ASTON MARTIN



LOWER LEVEL

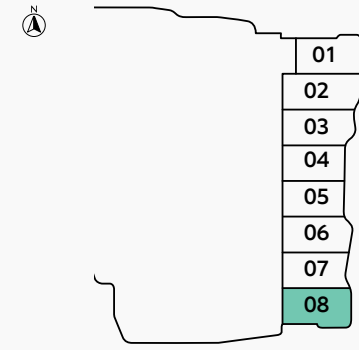


UPPER LEVEL

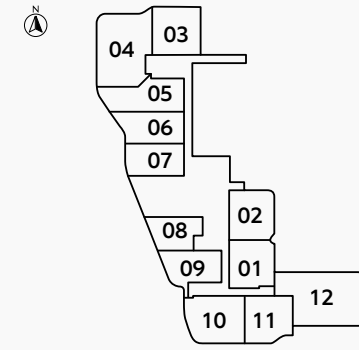
3 BEDROOMS VILLA TYPE D

SEA & ISLAND VIEW

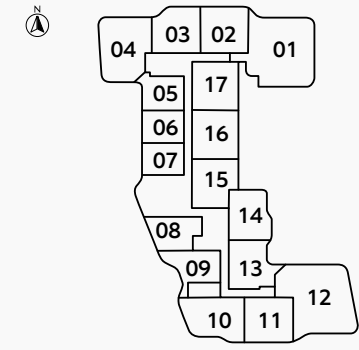
FLOOR
GROUND



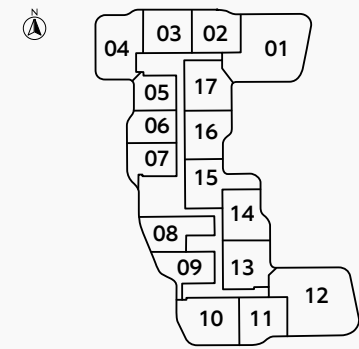
FLOOR
2



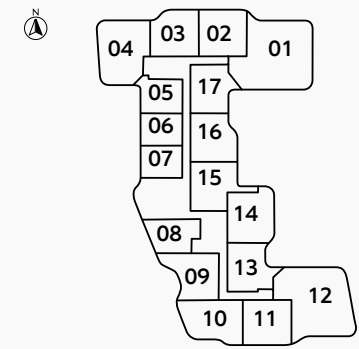
FLOOR
3



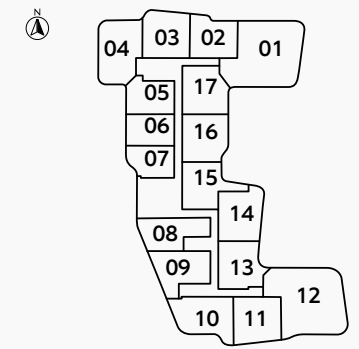
FLOORS
4, 8, 11, 13, 16



FLOORS
5, 7, 10, 12, 14



FLOORS
6, 9, 15



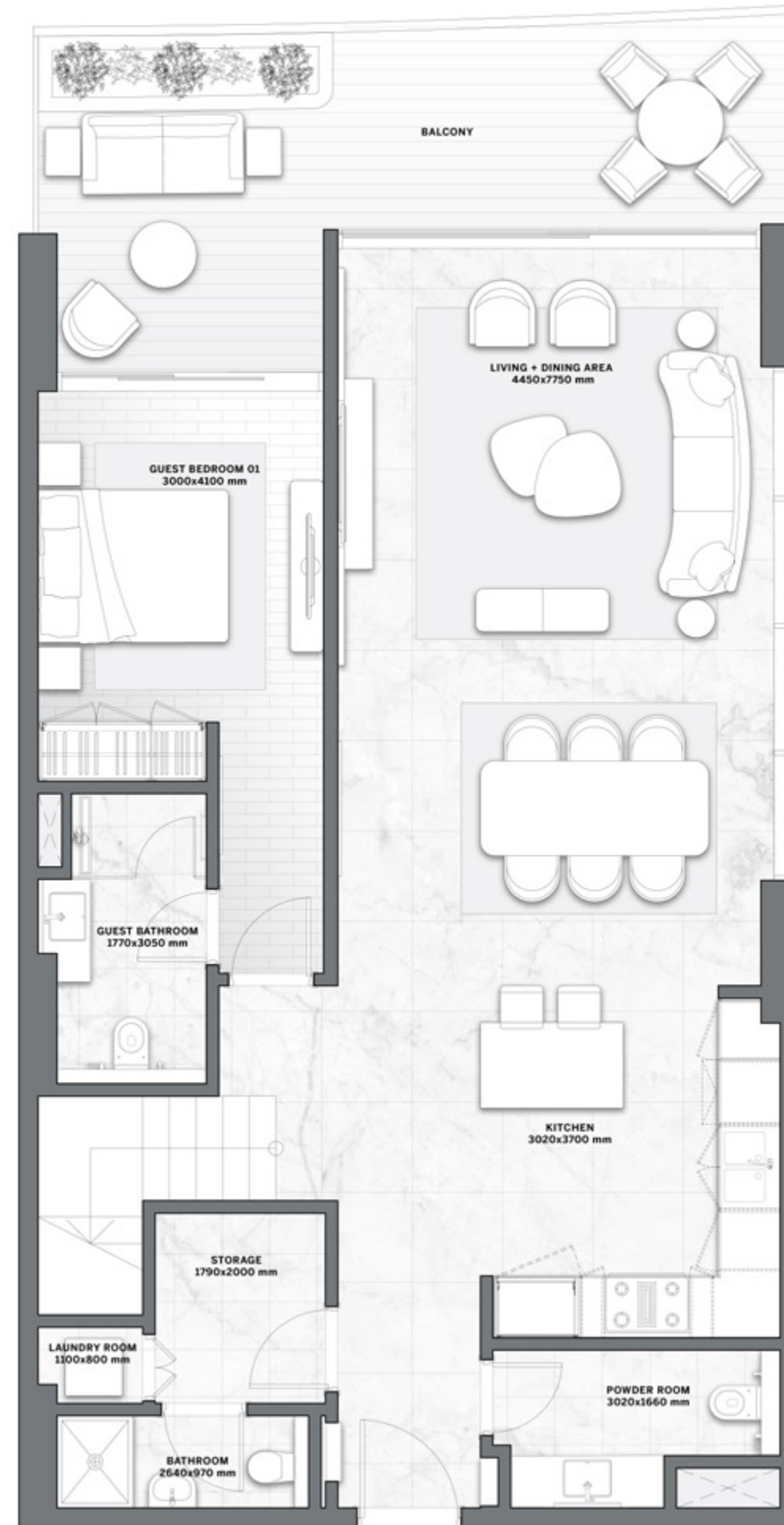
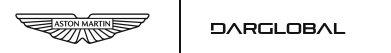
BEACH FRONT VIEW

RESIDENCE	SQM	SQFT
Internal Area	194	2,090
Balcony Area	34	364
Total Built up Area	228	2,455

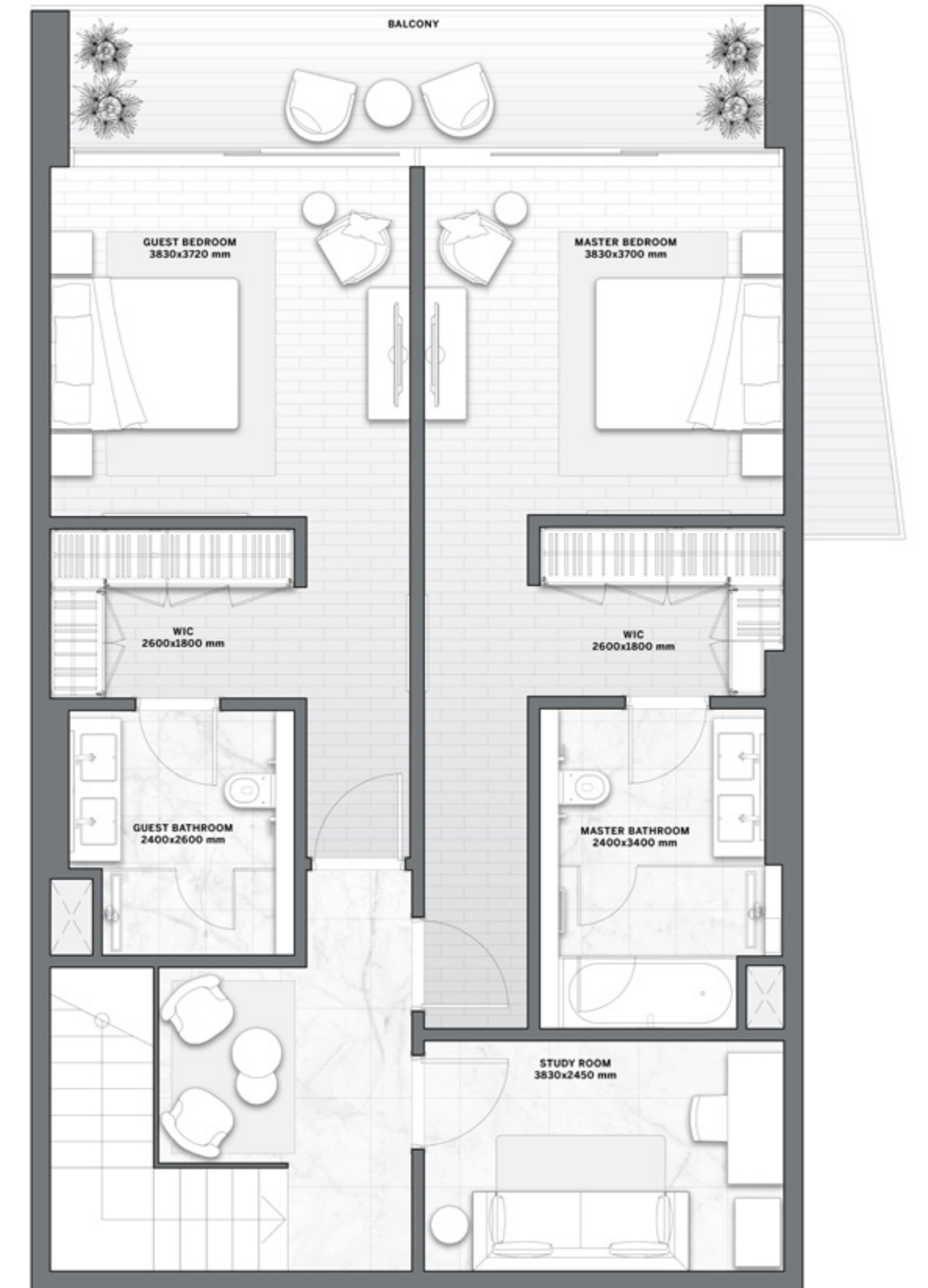
Disclaimer: All pictures, plans, layouts, information, data and details included in this brochure are indicative only and may change at any time up to the final 'as built' status in accordance with final designs of the project, regulatory approvals and planning permissions. All accessories and interior finishes such as wallpaper, chandeliers, furniture, electronics, white goods, curtains, hard and soft landscaping, pavements, features, gym, and other elements displayed in the brochure, or between the plot boundary, are not part of the unit and are shown for illustrative purposes only.

The Astera

INTERIORS BY ASTON MARTIN



LOWER LEVEL

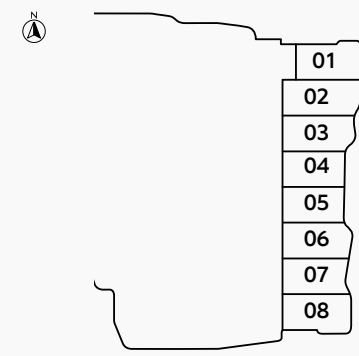


UPPER LEVEL

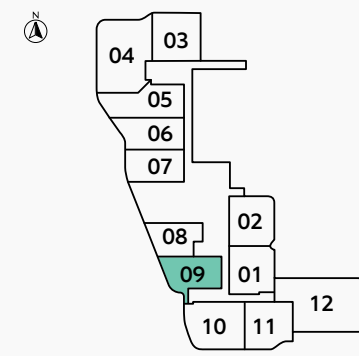
1 BEDROOM TYPE A

SEA & ISLAND VIEW

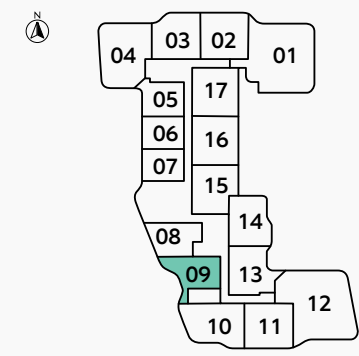
FLOOR GROUND



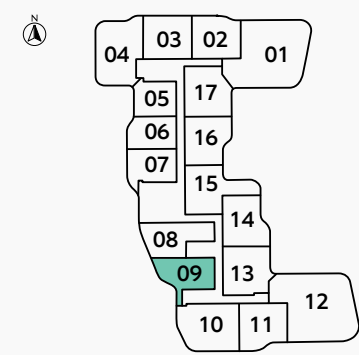
FLOOR 2



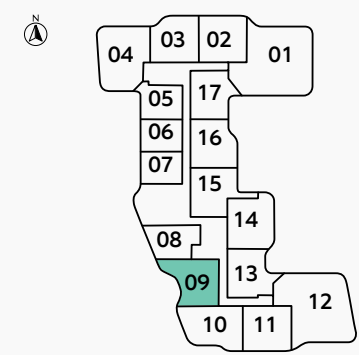
FLOOR 3



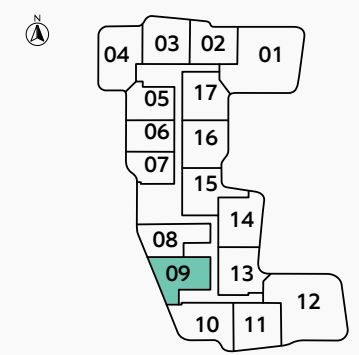
FLOORS 4, 8, 11, 13, 16



FLOORS 5, 7, 10, 12, 14



FLOORS 6, 9, 15



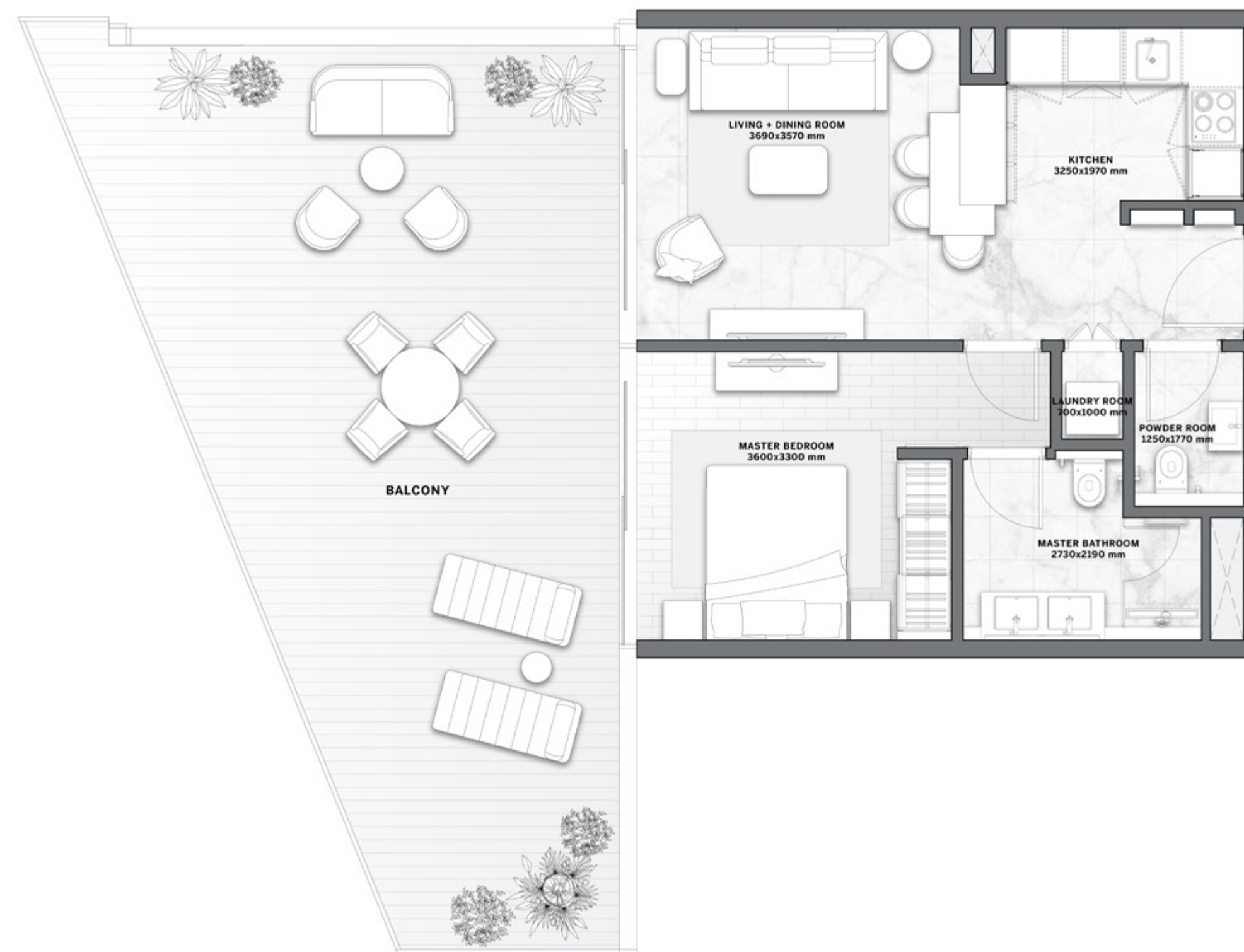
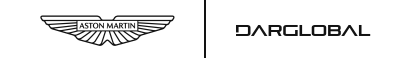
BEACH FRONT VIEW

RESIDENCE	SQM	SQFT
Internal Area	48	522
Balcony Area	34 - 52	372 - 564
Total Built up Area	83 - 101	894 - 1,087

Disclaimer: All pictures, plans, layouts, information, data and details included in this brochure are indicative only and may change at any time up to the final 'as built' status in accordance with final designs of the project, regulatory approvals and planning permissions. All accessories and interior finishes such as wallpaper, chandeliers, furniture, electronics, white goods, curtains, hard and soft landscaping, pavements, features, gym, and other elements displayed in the brochure, or between the plot boundary, are not part of the unit and are shown for illustrative purposes only.

The Astera

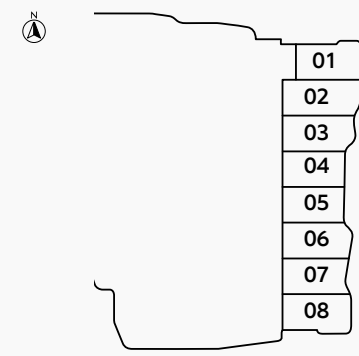
INTERIORS BY ASTON MARTIN



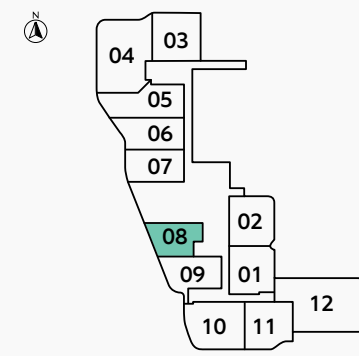
1 BEDROOM TYPE B

SEA & ISLAND VIEW

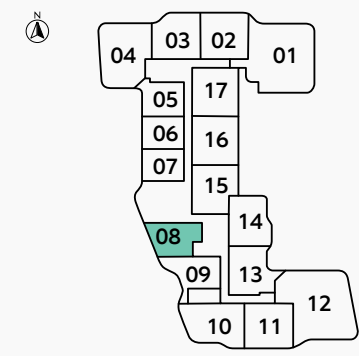
FLOOR
GROUND



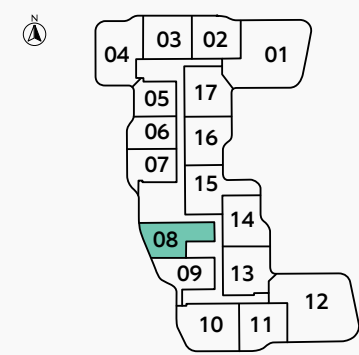
FLOOR
2



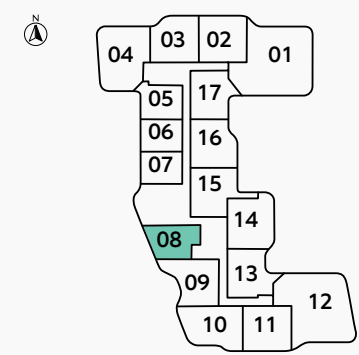
FLOOR
3



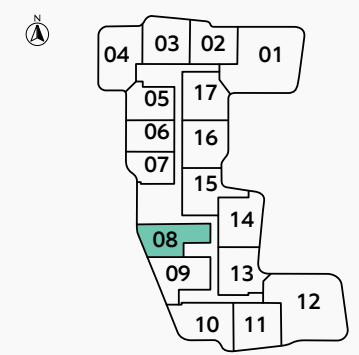
FLOORS
4, 8, 11, 13, 16



FLOORS
5, 7, 10, 12, 14



FLOORS
6, 9, 15



BEACH FRONT VIEW

RESIDENCE	SQM	SQFT
Internal Area	58	623
Balcony Area	19 - 20	209 - 214
Total Built up Area	77 - 78	832 - 837

Disclaimer: All pictures, plans, layouts, information, data and details included in this brochure are indicative only and may change at any time up to the final 'as built' status in accordance with final designs of the project, regulatory approvals and planning permissions. All accessories and interior finishes such as wallpaper, chandeliers, furniture, electronics, white goods, curtains, hard and soft landscaping, pavements, features, gym, and other elements displayed in the brochure, or between the plot boundary, are not part of the unit and are shown for illustrative purposes only.

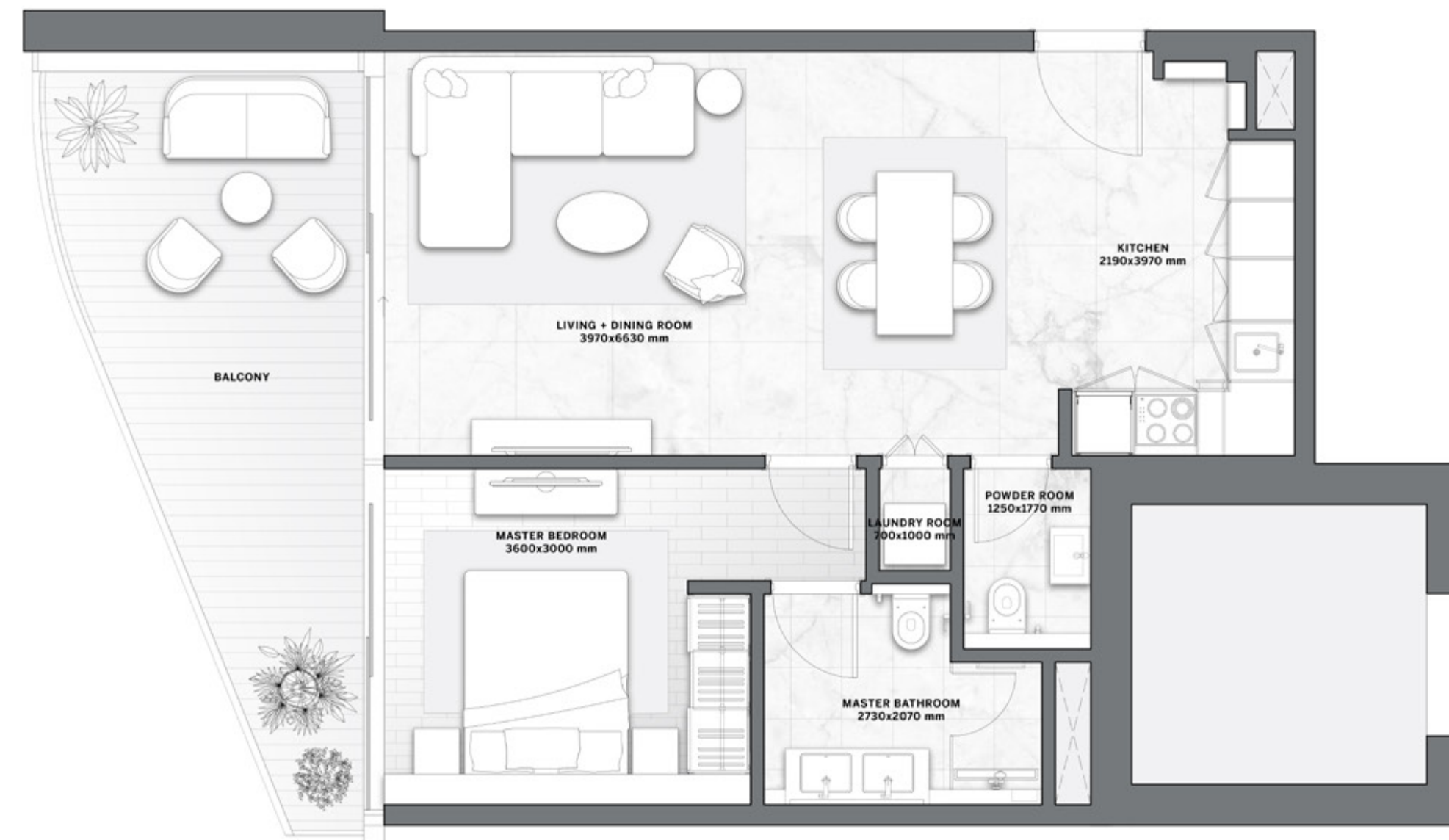
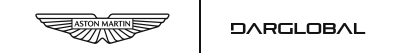


FLOOR PLAN



The Astera

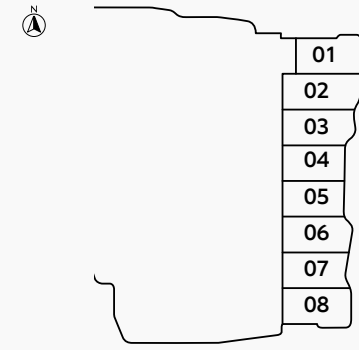
INTERIORS BY ASTON MARTIN



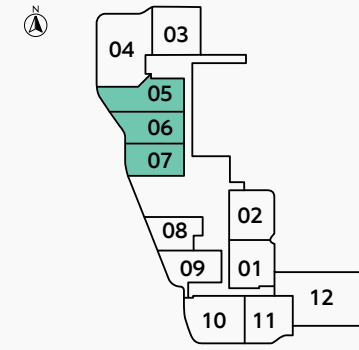
1 BEDROOM TYPE C

SEA & ISLAND VIEW

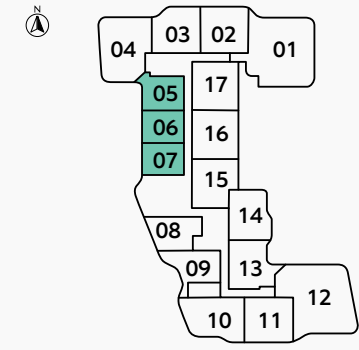
FLOOR
GROUND



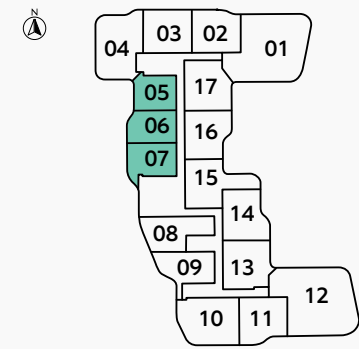
FLOOR
2



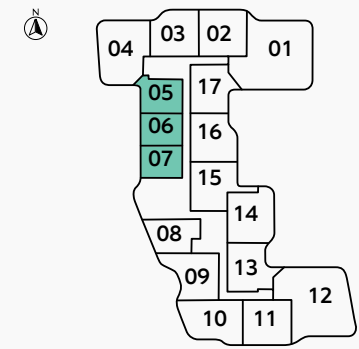
FLOOR
3



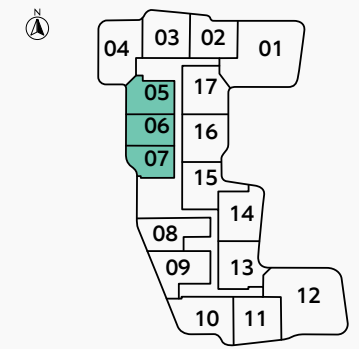
FLOORS
4, 8, 11, 13, 16



FLOORS
5, 7, 10, 12, 14



FLOORS
6, 9, 15



BEACH FRONT VIEW

RESIDENCE	SQM	SQFT
Internal Area	52 - 55	562 - 595
Balcony Area	11 - 65	119 - 702
Total Built up Area	63 - 120	682 - 1,297

Disclaimer: All pictures, plans, layouts, information, data and details included in this brochure are indicative only and may change at any time up to the final 'as built' status in accordance with final designs of the project, regulatory approvals and planning permissions. All accessories and interior finishes such as wallpaper, chandeliers, furniture, electronics, white goods, curtains, hard and soft landscaping, pavements, features, gym, and other elements displayed in the brochure, or between the plot boundary, are not part of the unit and are shown for illustrative purposes only.

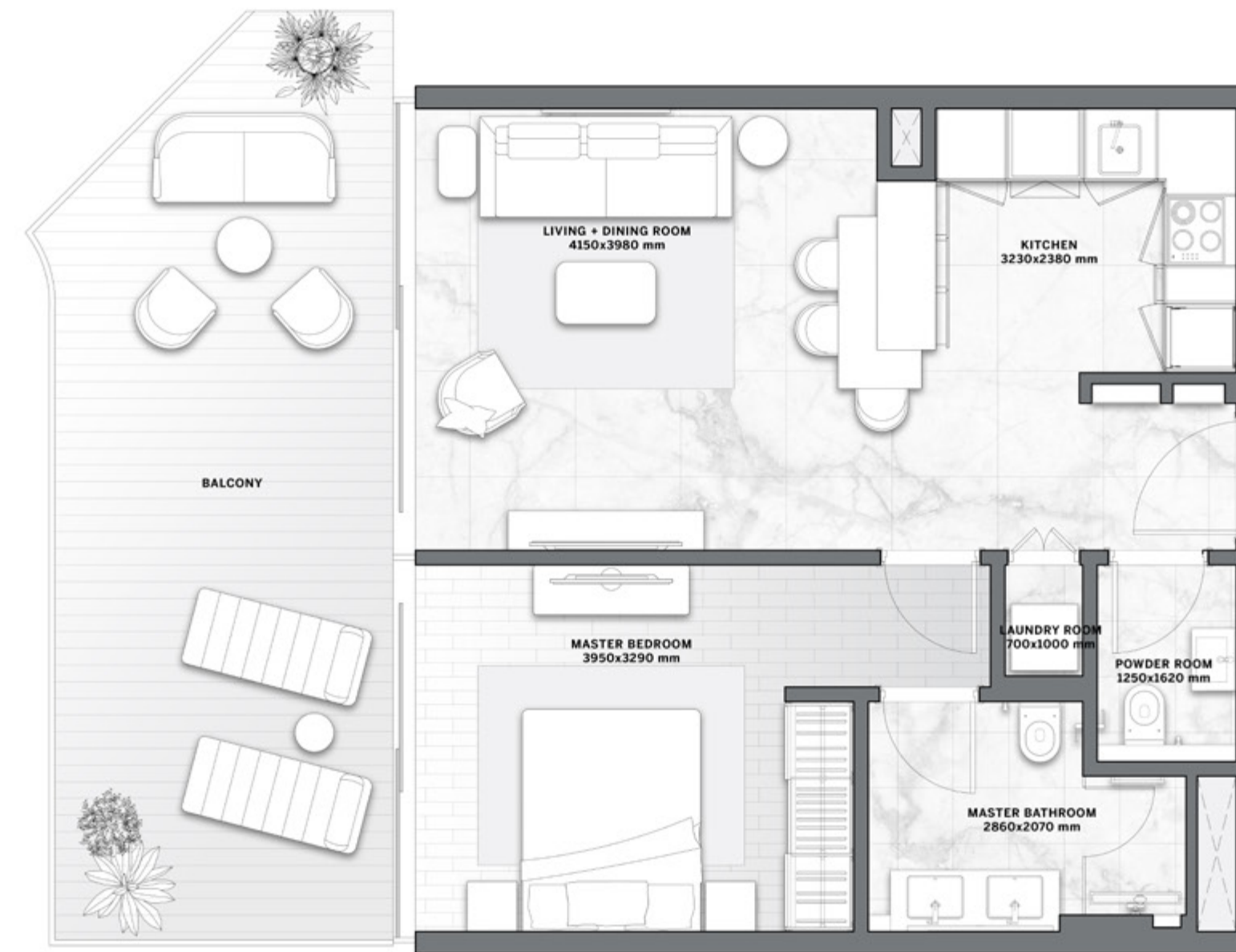
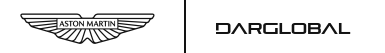


FLOOR PLAN



The Astera

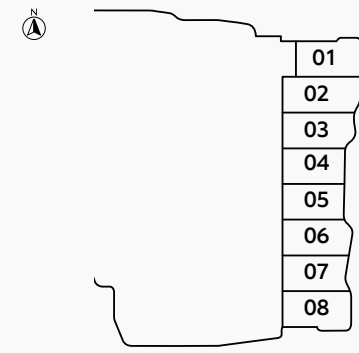
INTERIORS BY ASTON MARTIN



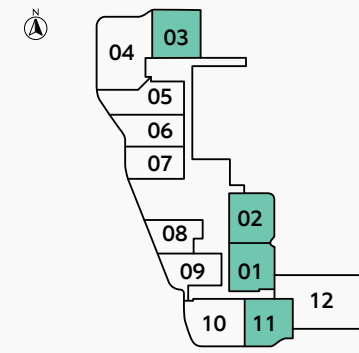
2 BEDROOMS TYPE A

SEA & ISLAND VIEW

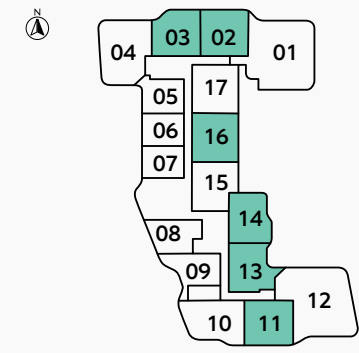
FLOOR
GROUND



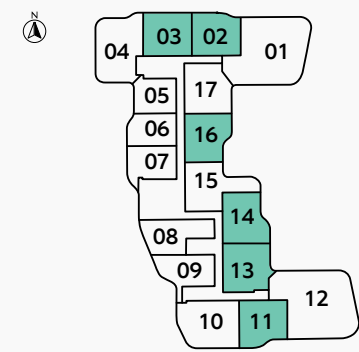
FLOOR
2



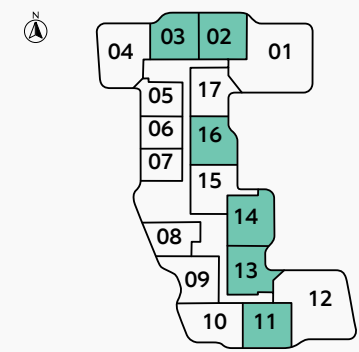
FLOOR
3



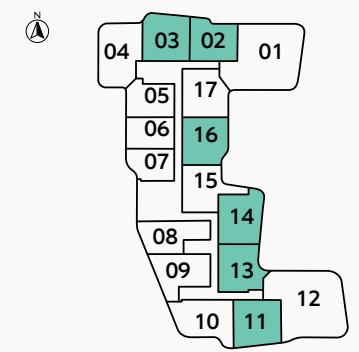
FLOORS
4, 8, 11, 13, 16



FLOORS
5, 7, 10, 12, 14



FLOORS
6, 9, 15



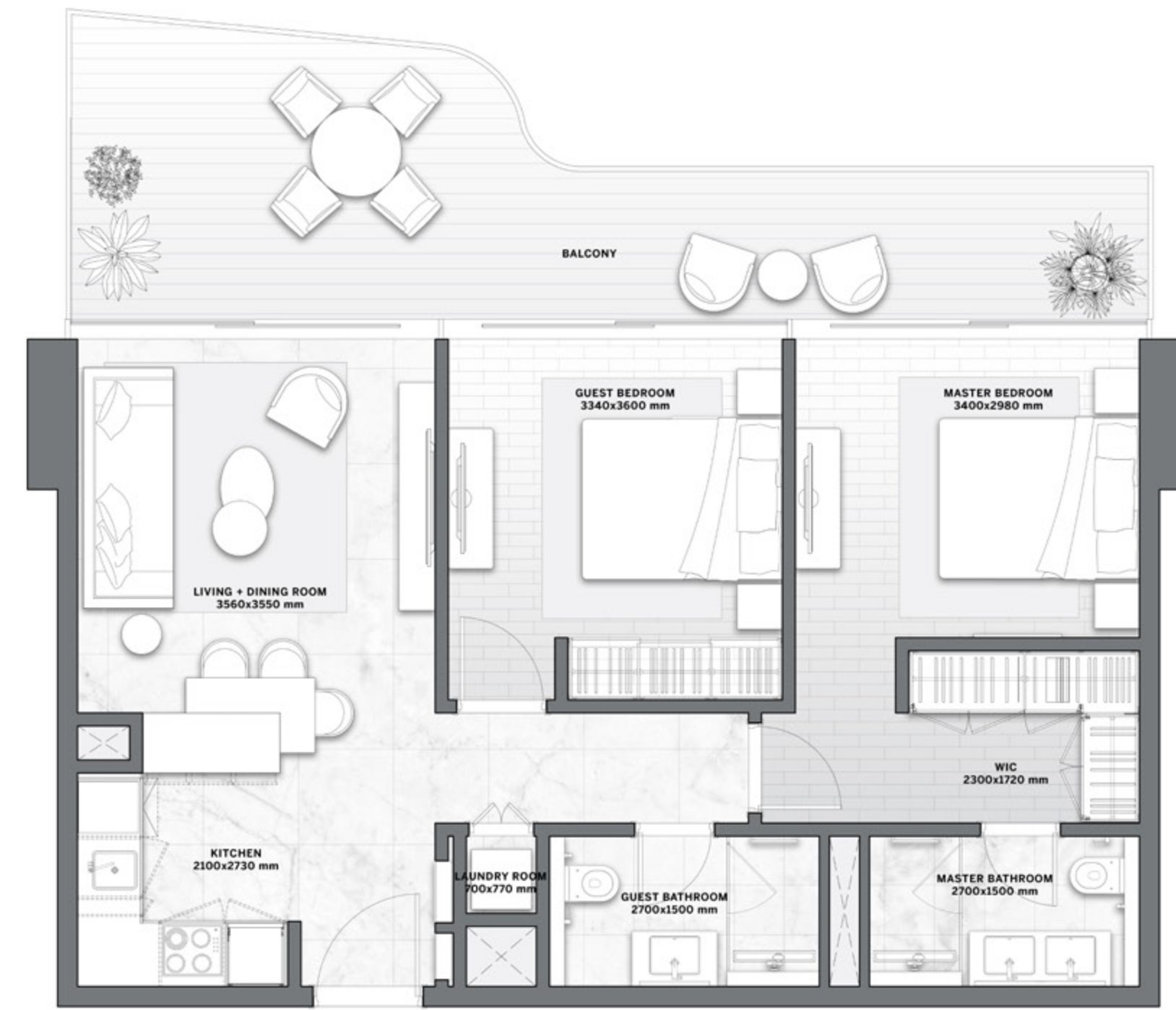
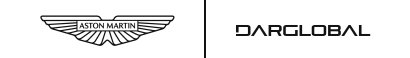
BEACH FRONT VIEW

RESIDENCE	SQM	SQFT
Internal Area	68 - 73	733 - 786
Balcony Area	23 - 43	252 - 467
Total Built up Area	93 - 116	1,002 - 1,252

Disclaimer: All pictures, plans, layouts, information, data and details included in this brochure are indicative only and may change at any time up to the final 'as built' status in accordance with final designs of the project, regulatory approvals and planning permissions. All accessories and interior finishes such as wallpaper, chandeliers, furniture, electronics, white goods, curtains, hard and soft landscaping, pavements, features, gym, and other elements displayed in the brochure, or between the plot boundary, are not part of the unit and are shown for illustrative purposes only.

The Astera

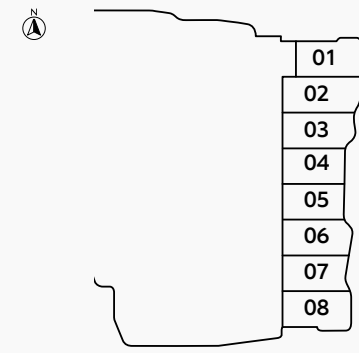
INTERIORS BY ASTON MARTIN



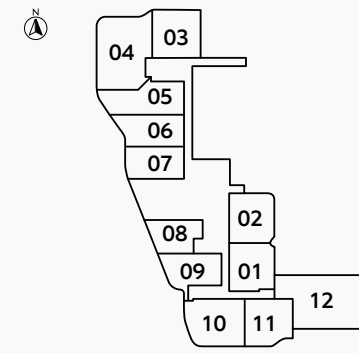
2 BEDROOMS TYPE B

SEA & ISLAND VIEW

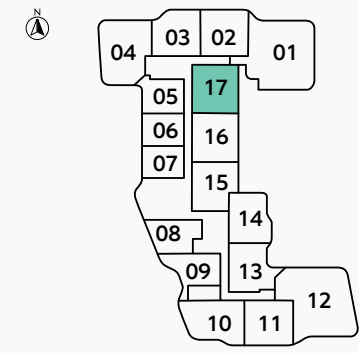
FLOOR
GROUND



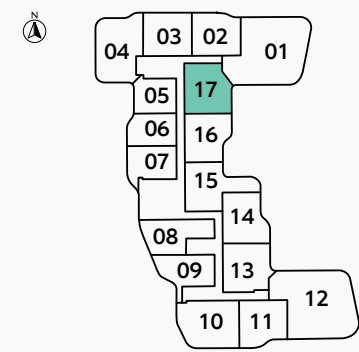
FLOOR
2



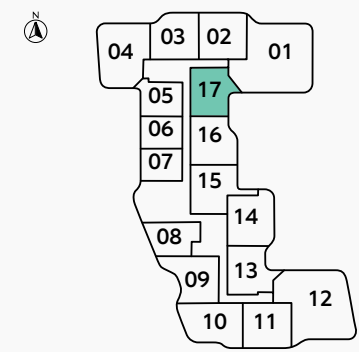
FLOOR
3



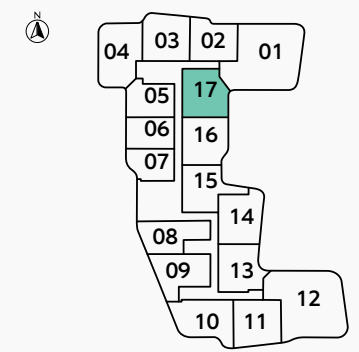
FLOORS
4, 8, 11, 13, 16



FLOORS
5, 7, 10, 12, 14



FLOORS
6, 9, 15

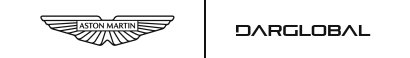


BEACH FRONT VIEW

RESIDENCE	SQM	SQFT
Internal Area	68	729
Balcony Area	23 - 34	252 - 369
Total Built up Area	91 - 102	981 - 1,098

Disclaimer: All pictures, plans, layouts, information, data and details included in this brochure are indicative only and may change at any time up to the final 'as built' status in accordance with final designs of the project, regulatory approvals and planning permissions. All accessories and interior finishes such as wallpaper, chandeliers, furniture, electronics, white goods, curtains, hard and soft landscaping, pavements, features, gym, and other elements displayed in the brochure, or between the plot boundary, are not part of the unit and are shown for illustrative purposes only.

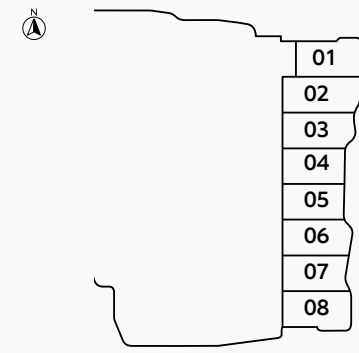
The Astera INTERIORS BY ASTON MARTIN



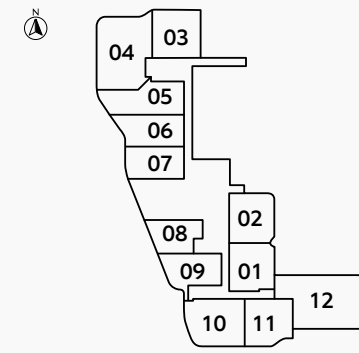
2 BEDROOMS TYPE C

SEA & ISLAND VIEW

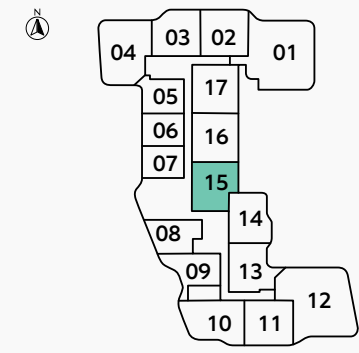
FLOOR
GROUND



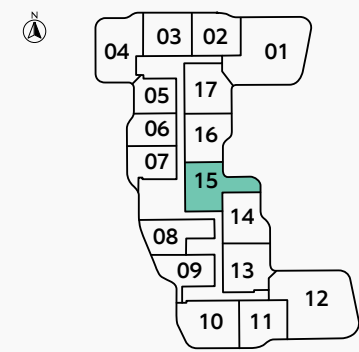
FLOOR
2



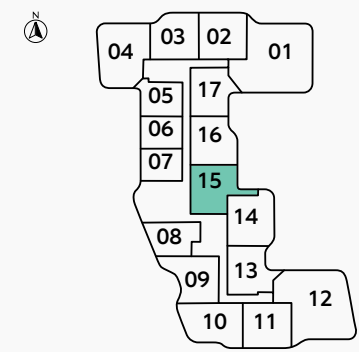
FLOOR
3



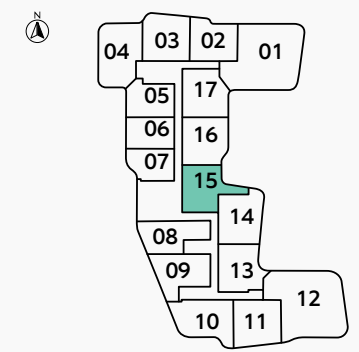
FLOORS
4, 8, 11, 13, 16



FLOORS
5, 7, 10, 12, 14



FLOORS
6, 9, 15



BEACH FRONT VIEW

RESIDENCE	SQM	SQFT
Internal Area	68 - 75	736 - 810
Balcony Area	24 - 37	260 - 397
Total Built up Area	99 - 111	1,062 - 1,197

Disclaimer: All pictures, plans, layouts, information, data and details included in this brochure are indicative only and may change at any time up to the final 'as built' status in accordance with final designs of the project, regulatory approvals and planning permissions. All accessories and interior finishes such as wallpaper, chandeliers, furniture, electronics, white goods, curtains, hard and soft landscaping, pavements, features, gym, and other elements displayed in the brochure, or between the plot boundary, are not part of the unit and are shown for illustrative purposes only.

The Astera

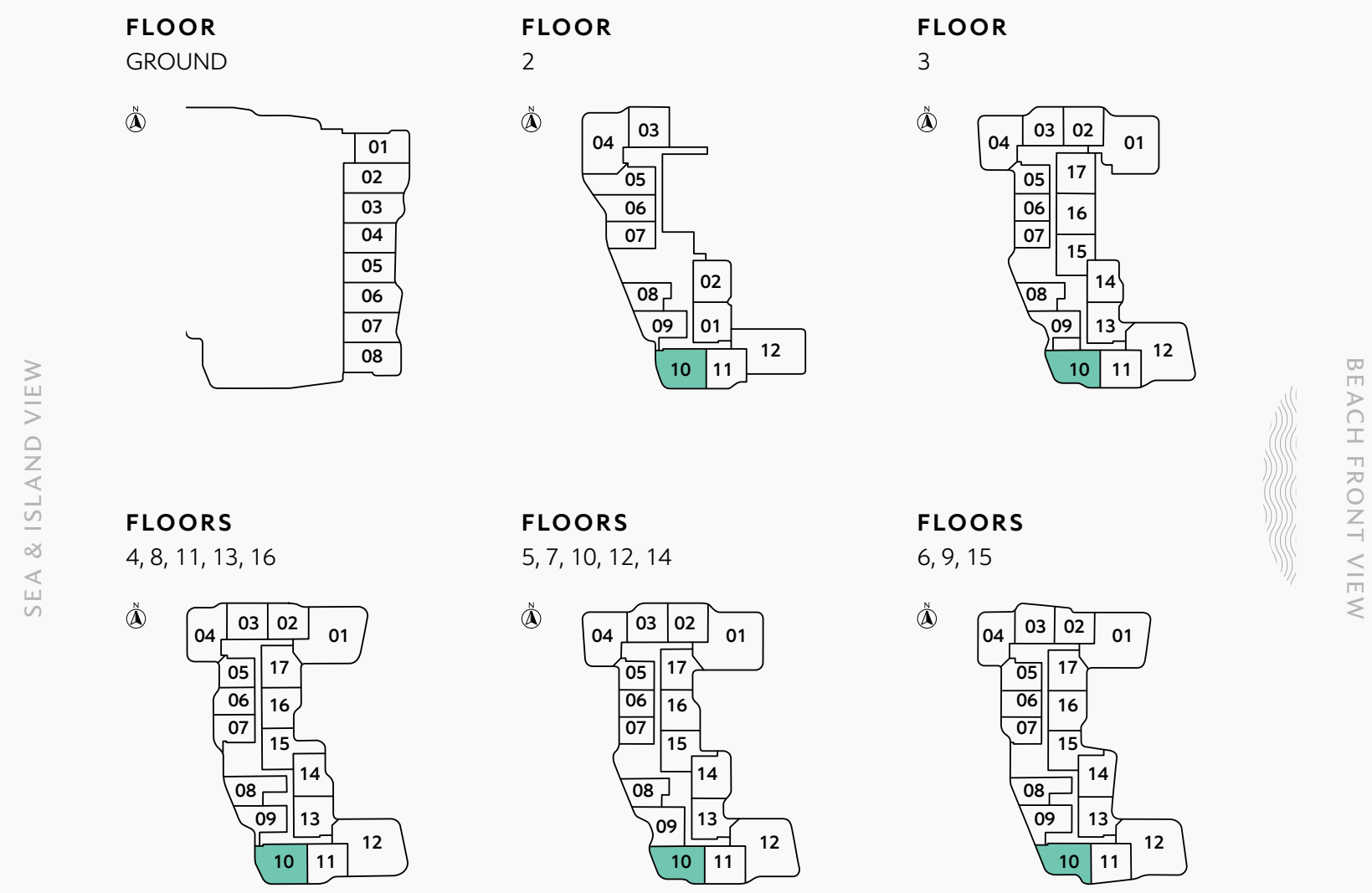
INTERIORS BY ASTON MARTIN



2 BEDROOMS TYPE D

The Astera

INTERIORS BY ASTON MARTIN



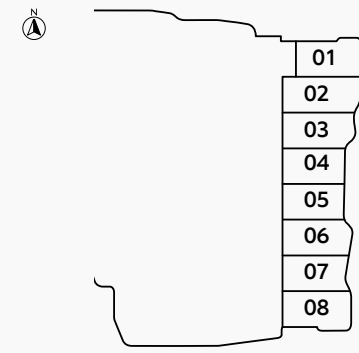
RESIDENCE	SQM	SQFT
Internal Area	73	787
Balcony Area	42 - 56	459 - 607
Total Built up Area	116 - 129	1,246 - 1,394

Disclaimer: All pictures, plans, layouts, information, data and details included in this brochure are indicative only and may change at any time up to the final 'as built' status in accordance with final designs of the project, regulatory approvals and planning permissions. All accessories and interior finishes such as wallpaper, chandeliers, furniture, electronics, white goods, curtains, hard and soft landscaping, pavements, features, gym, and other elements displayed in the brochure, or between the plot boundary, are not part of the unit and are shown for illustrative purposes only.

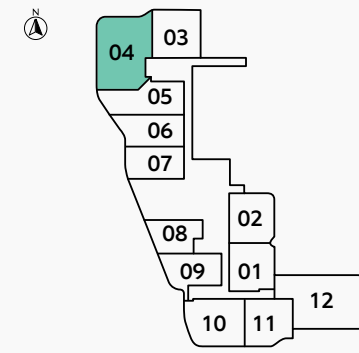
2 BEDROOMS TYPE E

SEA & ISLAND VIEW

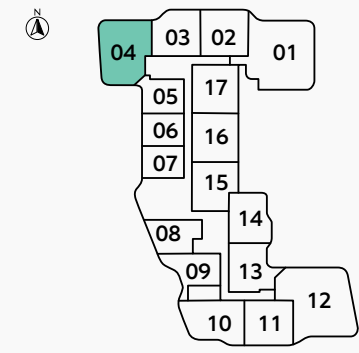
FLOOR
GROUND



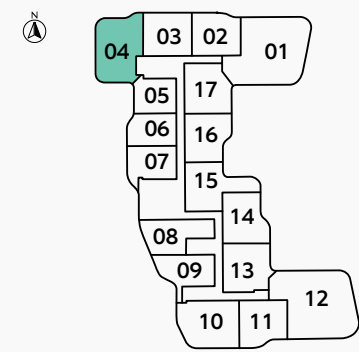
FLOOR
2



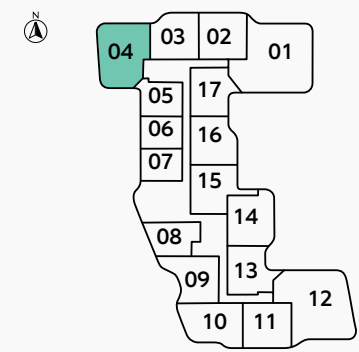
FLOOR
3



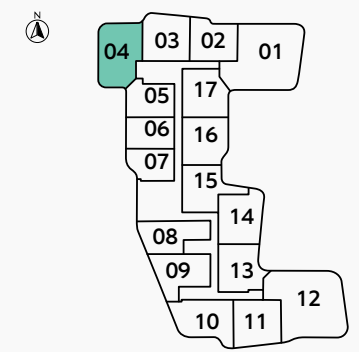
FLOORS
4, 8, 11, 13, 16



FLOORS
5, 7, 10, 12, 14



FLOORS
6, 9, 15



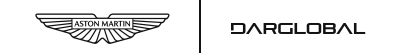
BEACH FRONT VIEW

RESIDENCE	SQM	SQFT
Internal Area	76	820
Balcony Area	50 - 61	539 - 659
Total Built up Area	126 - 182	1,359 - 1,479

Disclaimer: All pictures, plans, layouts, information, data and details included in this brochure are indicative only and may change at any time up to the final 'as built' status in accordance with final designs of the project, regulatory approvals and planning permissions. All accessories and interior finishes such as wallpaper, chandeliers, furniture, electronics, white goods, curtains, hard and soft landscaping, pavements, features, gym, and other elements displayed in the brochure, or between the plot boundary, are not part of the unit and are shown for illustrative purposes only.

The Astera

INTERIORS BY ASTON MARTIN





EXCLUSIVELINKS

Real Estate Brokers

sales | leasing | management | off plan

www.exclusive-links.com

Email: Offplan@exclusive-links.com

Telephone No: +971 4 399 4937

Land Department Registration Nos. 708/16892

TRN # 100003976600003

Follow us on:    ELREDubai

 <https://www.instagram.com/exclusivelinks/>

 <https://www.linkedin.com/company/exclusive-links-real-estate-brokers/>