

ARLO

DUBAI CREEK HARBOUR

EMAAR

ARLO

DUBAI CREEK HARBOUR



FLOOR PLAN



1 BEDROOM

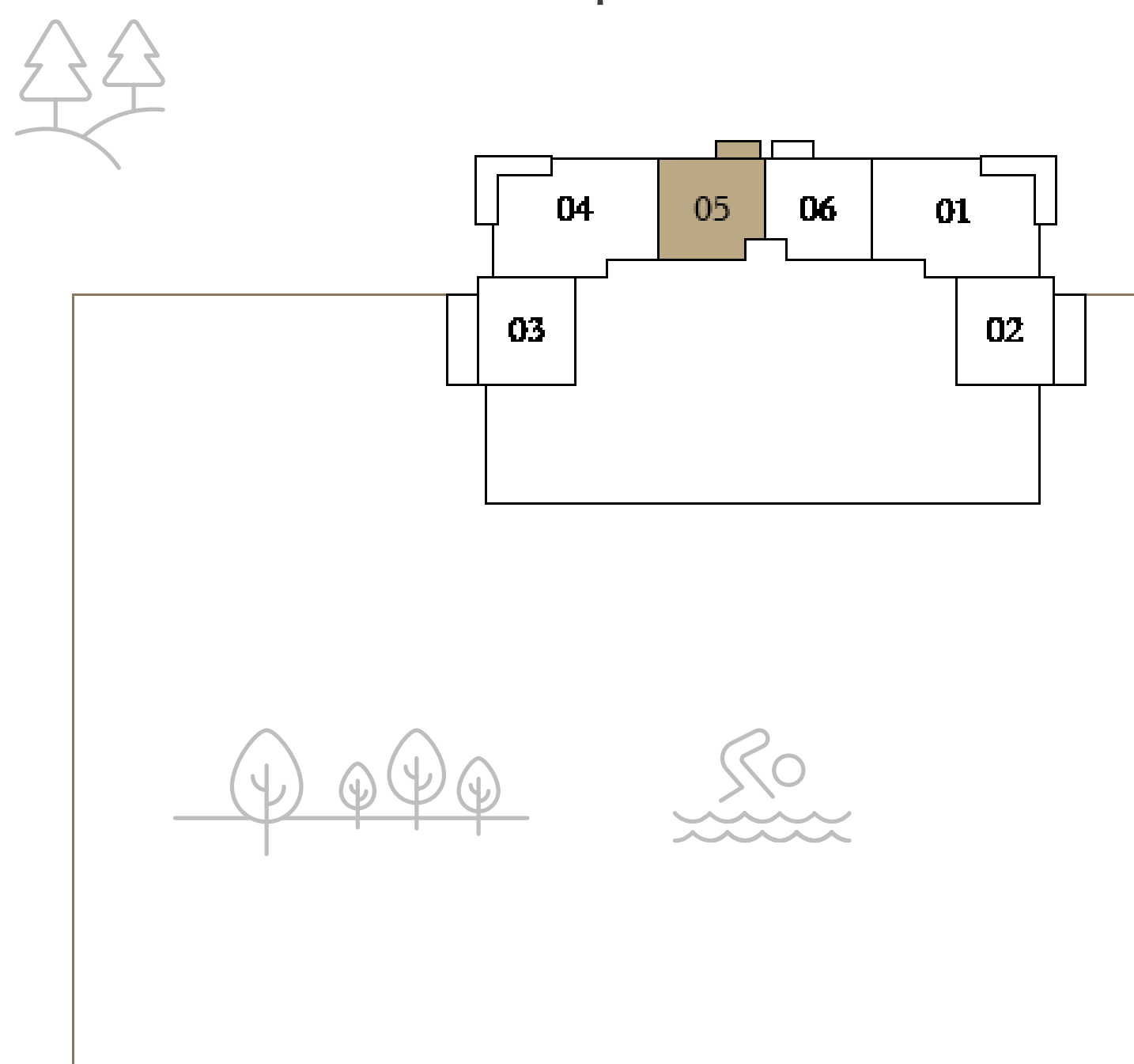
LEVEL 1

UNIT 05

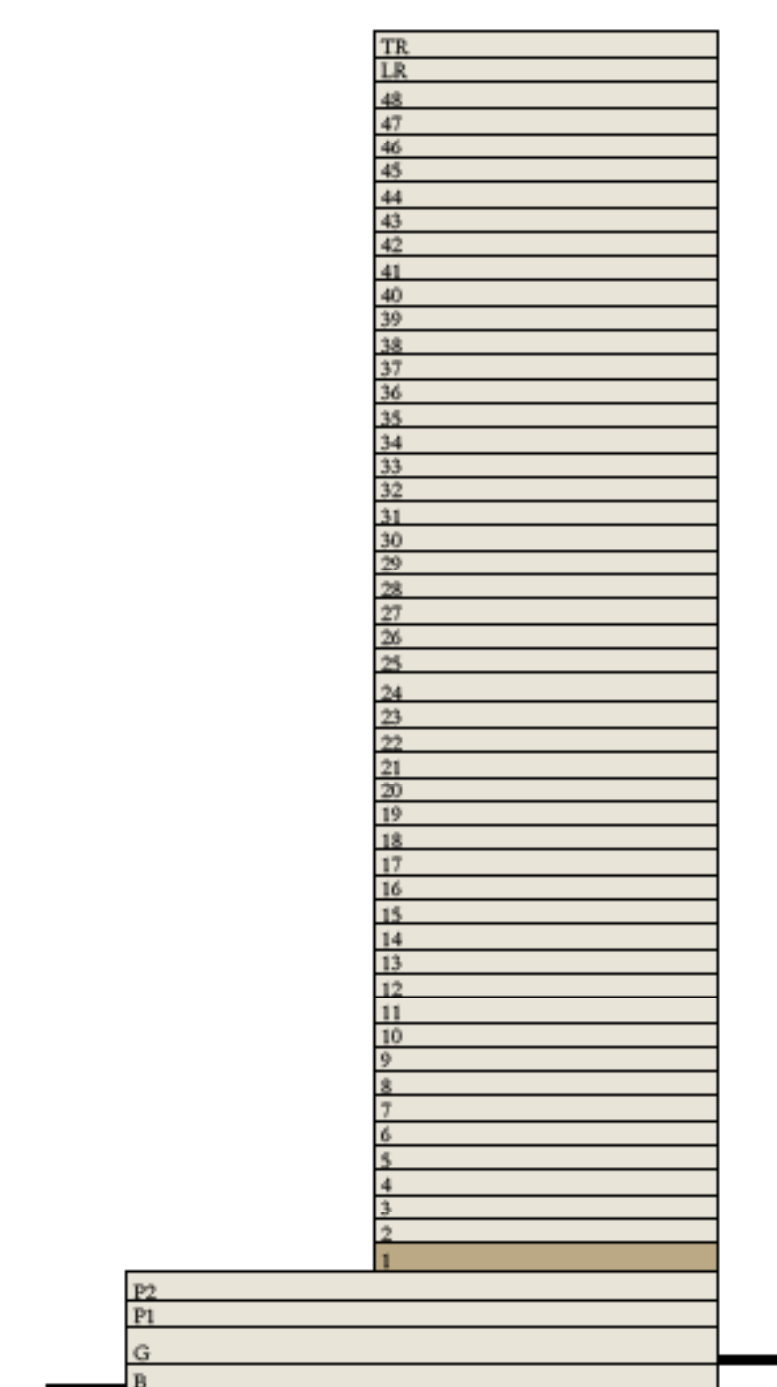
SUITE AREA	650.14 SQ.FT.	60.40 SQ.M.
BALCONY AREA	55.11 SQ.FT.	5.12 SQ.M.
TOTAL AREA	705.25 SQ.FT.	65.52 SQ.M.

KEY PLAN LEVEL 1

1



KEY SECTION



Disclaimer : All dimensions are in imperial and metric, and measured from finish to finish excluding construction tolerances. 2. All materials, dimensions, and drawings are approximate only. 3. Information is subject to change without notice, at developer's absolute discretion. 4. Actual area may vary from the stated area. 5. Drawings not to scale. 6. All images used are for illustrative purposes only and do not represent the actual size, features, specifications, fittings, and furnishings. 7. The developer reserves the right to make revisions / alterations, at it's absolute discretion, without any liability whatsoever.

EMAAR

ARLO

DUBAI CREEK HARBOUR



FLOOR PLAN



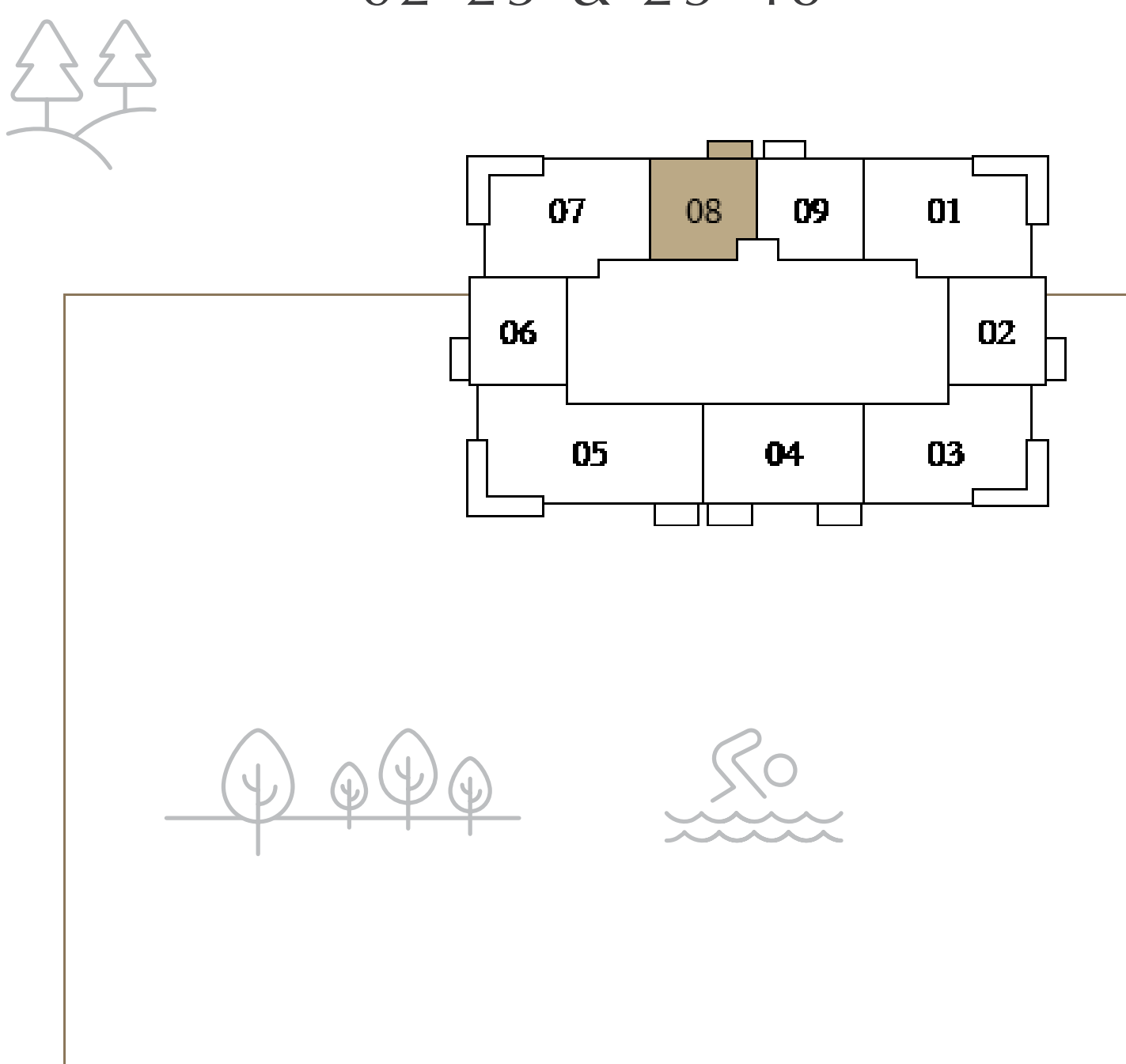
1 BEDROOM

LEVEL 02-23, 25-48

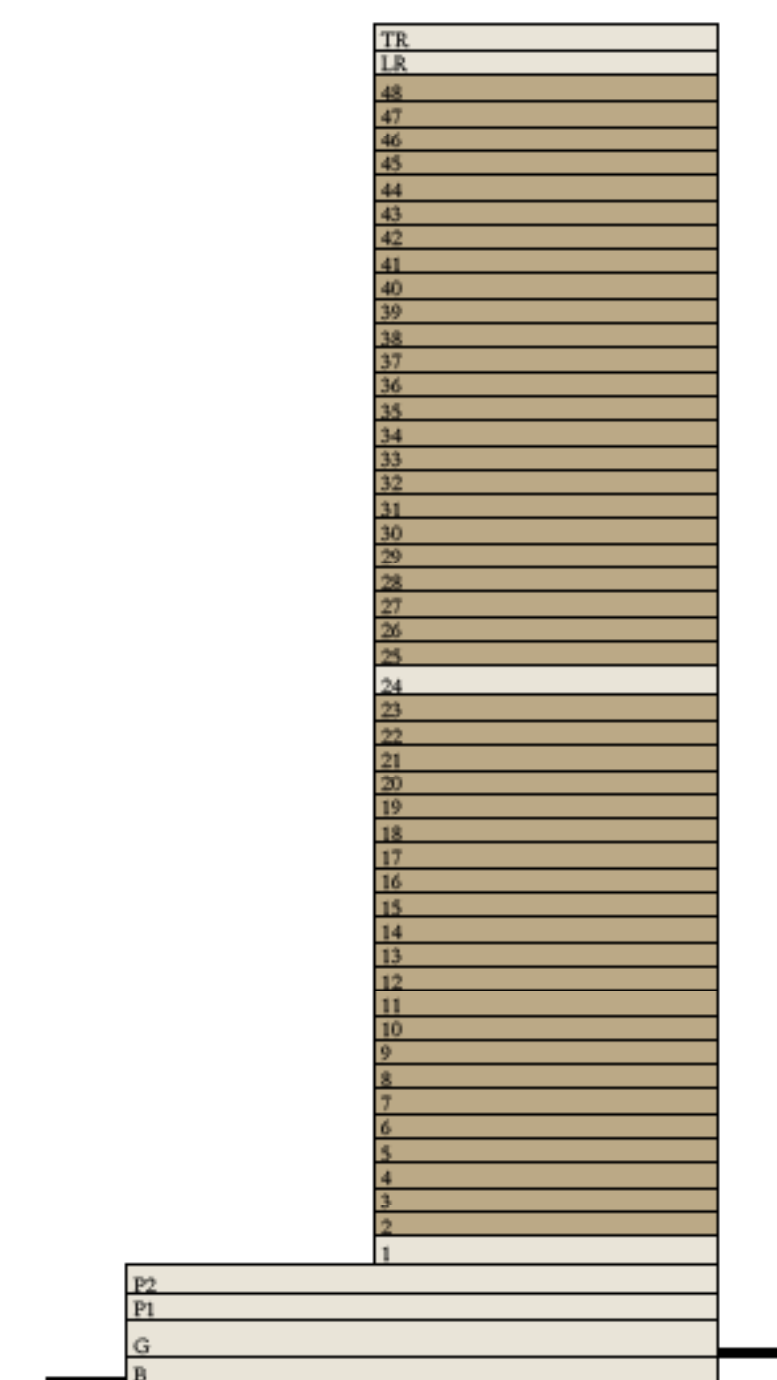
UNIT 08

SUITE AREA	650.14 SQ.FT.	60.40 SQ.M.
BALCONY AREA	55.11 SQ.FT.	5.12 SQ.M.
TOTAL AREA	705.25 SQ.FT.	65.52 SQ.M.

KEY PLAN LEVEL
02-23 & 25-48



KEY SECTION



Disclaimer : All dimensions are in imperial and metric, and measured from finish to finish excluding construction tolerances. 2. All materials, dimensions, and drawings are approximate only. 3. Information is subject to change without notice, at developer's absolute discretion. 4. Actual area may vary from the stated area. 5. Drawings not to scale. 6. All images used are for illustrative purposes only and do not represent the actual size, features, specifications, fittings, and furnishings. 7. The developer reserves the right to make revisions / alterations, at it's absolute discretion, without any liability whatsoever.

ARLO

DUBAI CREEK HARBOUR



FLOOR PLAN



1 BEDROOM

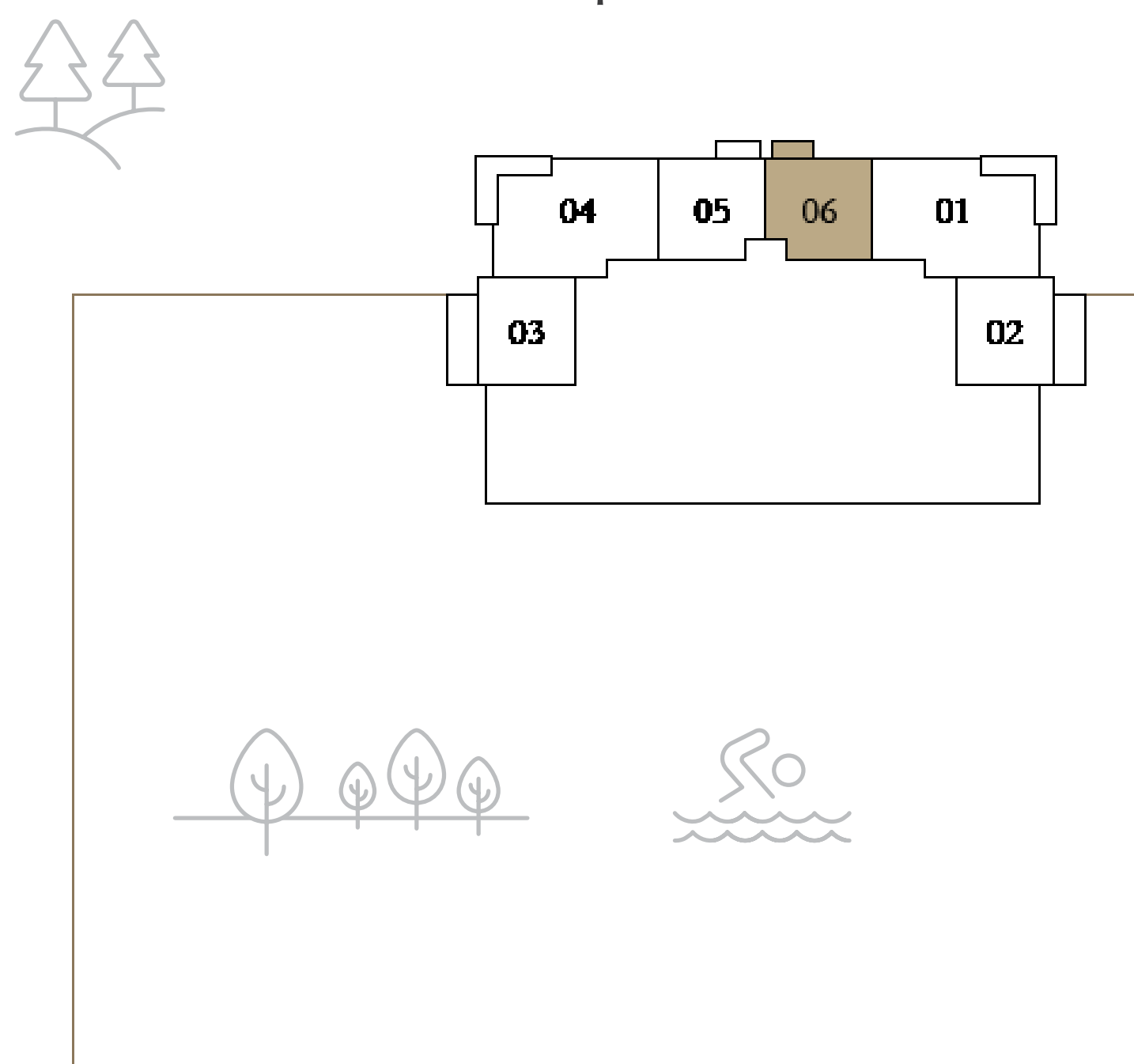
LEVEL 1

UNIT 06

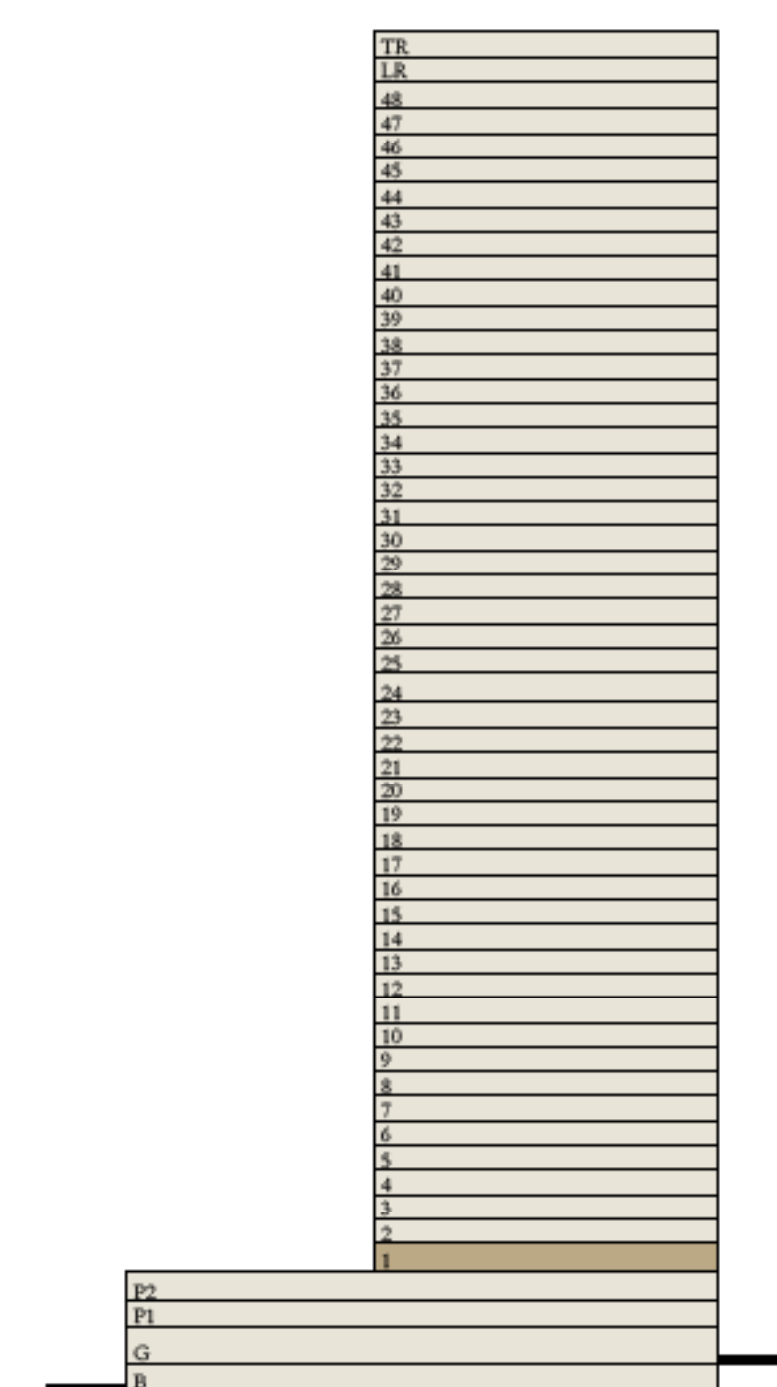
SUITE AREA	650.14 SQ.FT.	60.40 SQ.M.
BALCONY AREA	55.11 SQ.FT.	5.12 SQ.M.
TOTAL AREA	705.25 SQ.FT.	65.52 SQ.M.

KEY PLAN LEVEL 1

1



KEY SECTION



Disclaimer : All dimensions are in imperial and metric, and measured from finish to finish excluding construction tolerances. 2. All materials, dimensions, and drawings are approximate only. 3. Information is subject to change without notice, at developer's absolute discretion. 4. Actual area may vary from the stated area. 5. Drawings not to scale. 6. All images used are for illustrative purposes only and do not represent the actual size, features, specifications, fittings, and furnishings. 7. The developer reserves the right to make revisions / alterations, at it's absolute discretion, without any liability whatsoever.

ARLO

DUBAI CREEK HARBOUR



FLOOR PLAN

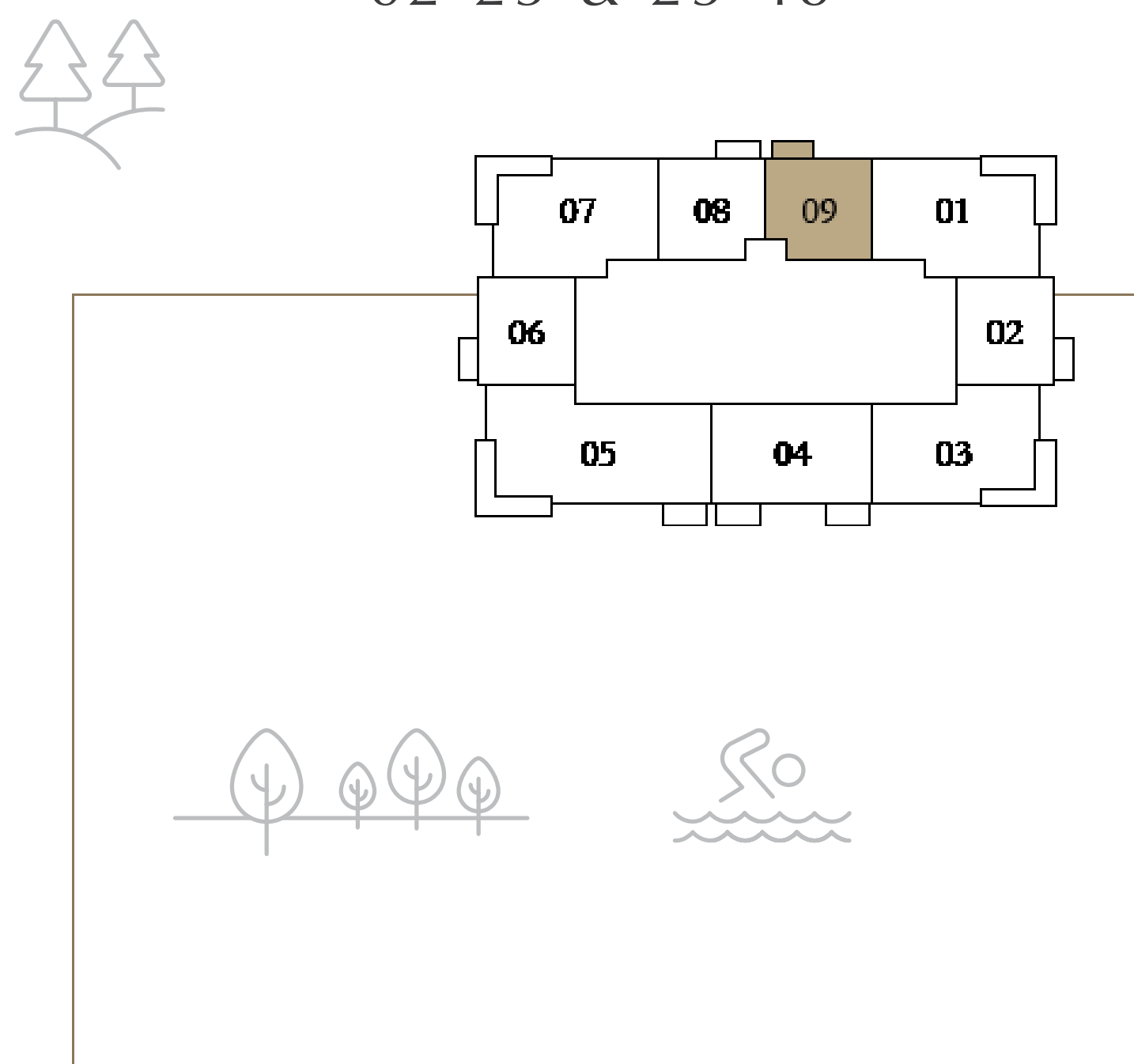


1 BEDROOM

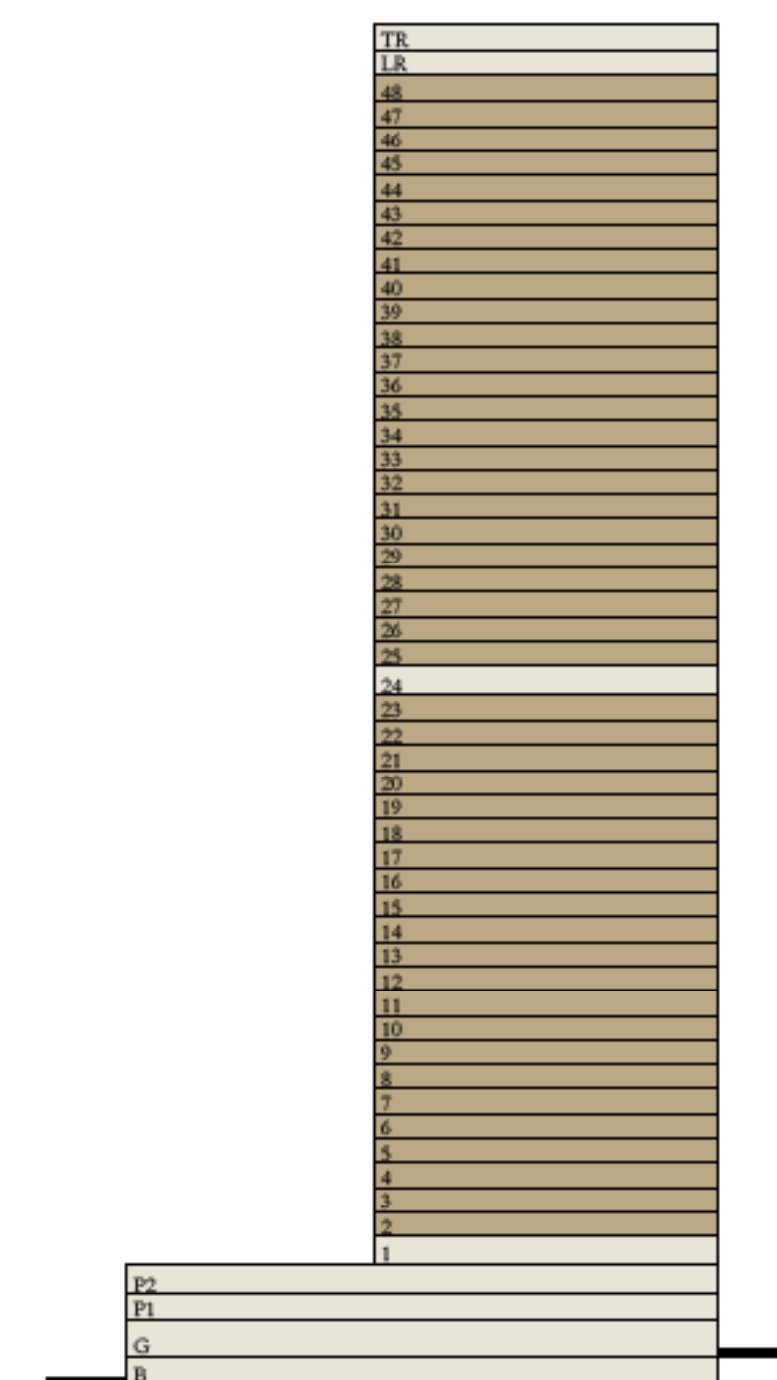
LEVEL 02-23, 25-48 UNIT 09

SUITE AREA	650.14 SQ.FT.	60.40 SQ.M.
BALCONY AREA	55.12 SQ.FT.	5.12 SQ.M.
TOTAL AREA	705.26 SQ.FT.	65.52 SQ.M.

KEY PLAN LEVEL
02-23 & 25-48



KEY SECTION



Disclaimer : All dimensions are in imperial and metric, and measured from finish to finish excluding construction tolerances. 2. All materials, dimensions, and drawings are approximate only. 3. Information is subject to change without notice, at developer's absolute discretion. 4. Actual area may vary from the stated area. 5. Drawings not to scale. 6. All images used are for illustrative purposes only and do not represent the actual size, features, specifications, fittings, and furnishings. 7. The developer reserves the right to make revisions / alterations, at its absolute discretion, without any liability whatsoever.

ARLO

DUBAI CREEK HARBOUR



FLOOR PLAN



1 BEDROOM

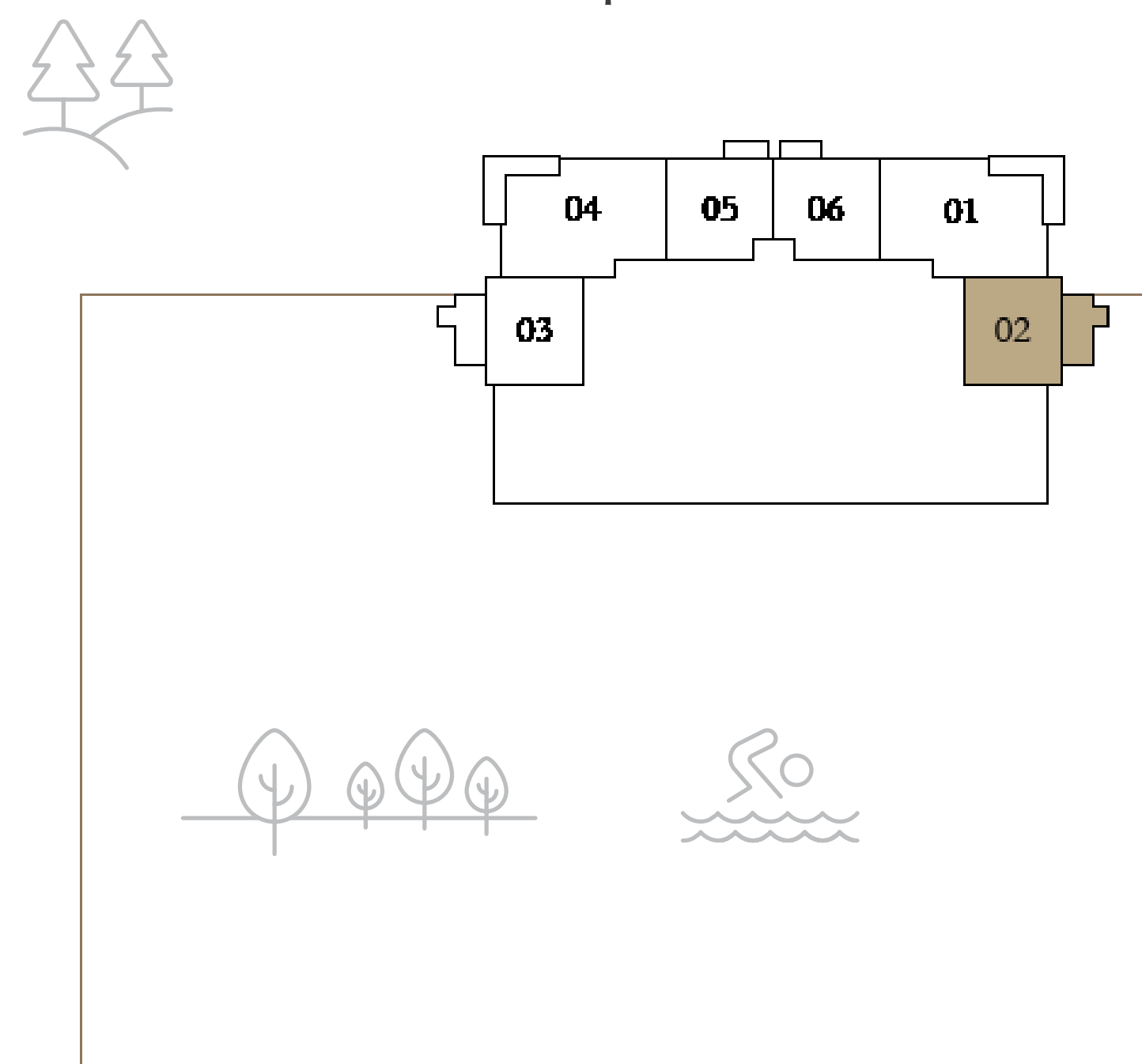
LEVEL 1

UNIT 02

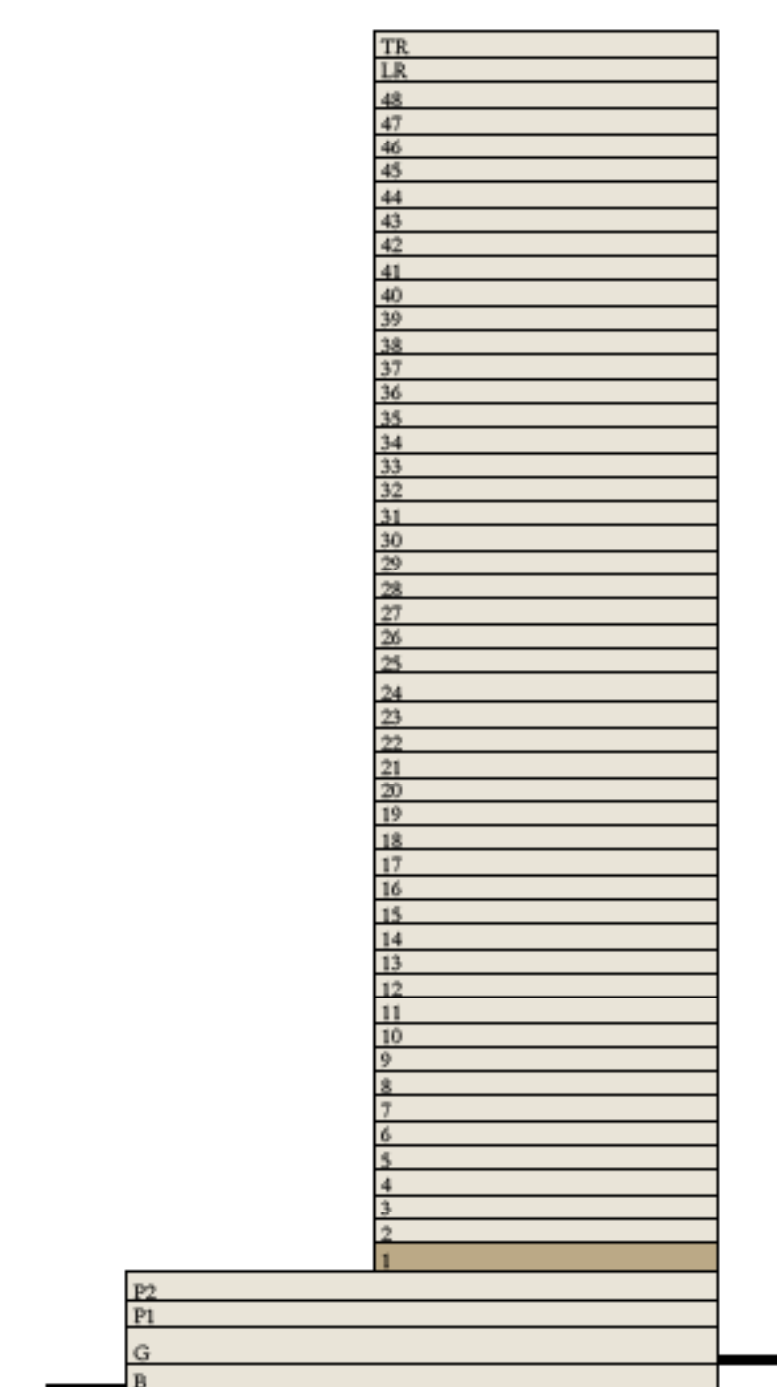
SUITE AREA	652.94 SQ.FT.	60.66 SQ.M.
BALCONY AREA	176.42 SQ.FT.	16.39 SQ.M.
TOTAL AREA	829.36 SQ.FT.	77.05 SQ.M.

KEY PLAN LEVEL 1

1



KEY SECTION



Disclaimer : All dimensions are in imperial and metric, and measured from finish to finish excluding construction tolerances. 2. All materials, dimensions, and drawings are approximate only. 3. Information is subject to change without notice, at developer's absolute discretion. 4. Actual area may vary from the stated area. 5. Drawings not to scale. 6. All images used are for illustrative purposes only and do not represent the actual size, features, specifications, fittings, and furnishings. 7. The developer reserves the right to make revisions / alterations, at its absolute discretion, without any liability whatsoever.

ARLO

DUBAI CREEK HARBOUR



FLOOR PLAN



1 BEDROOM

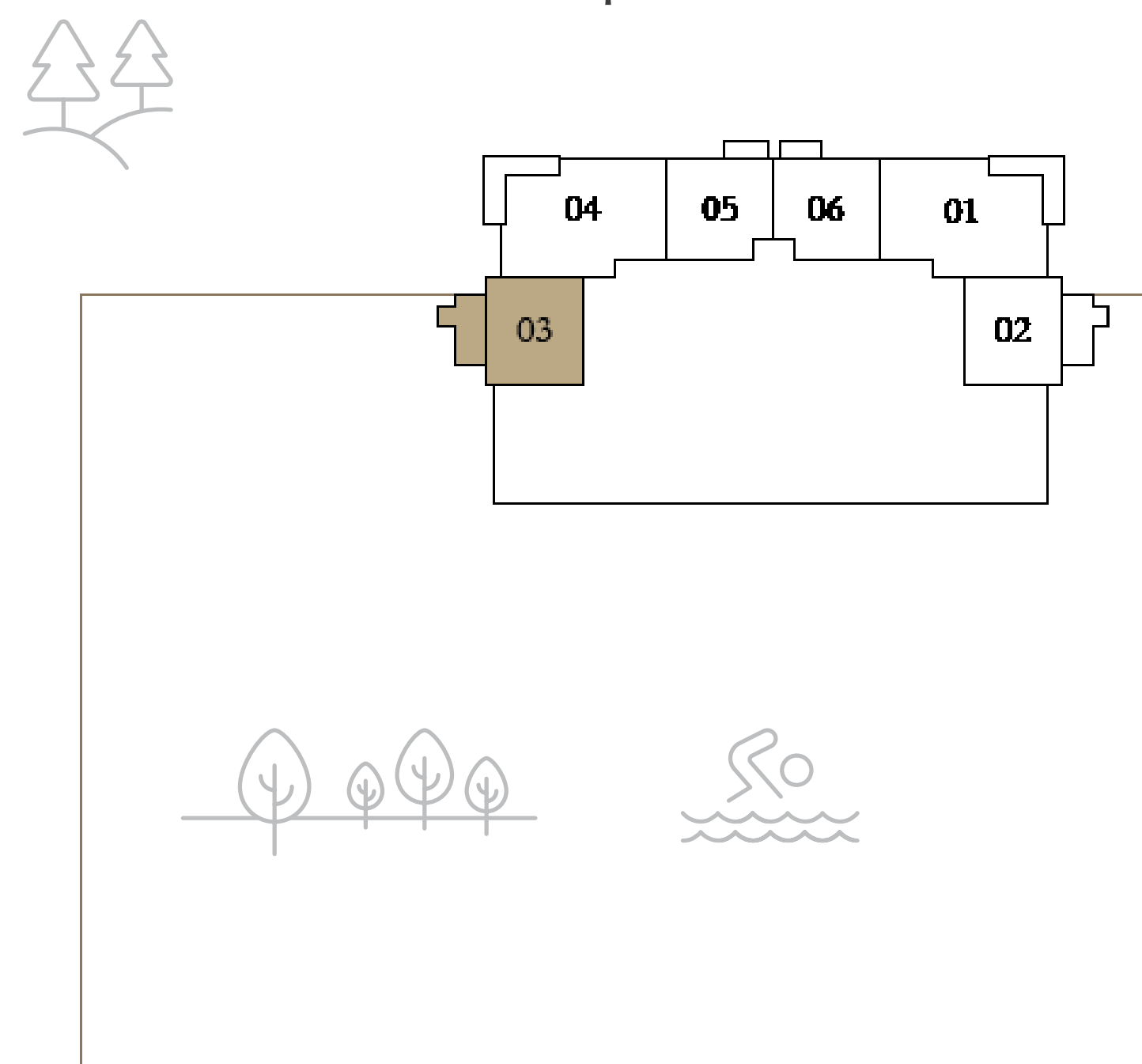
LEVEL 1

UNIT 03

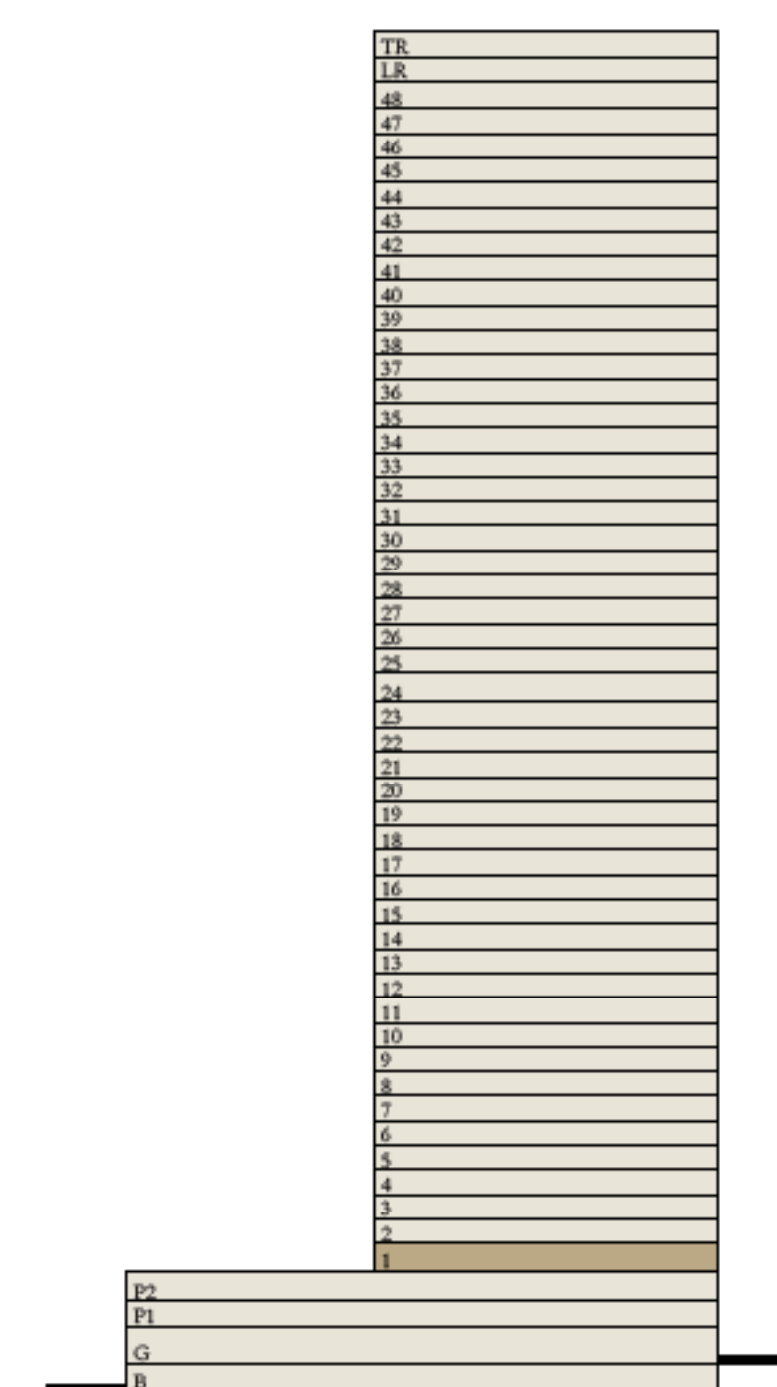
SUITE AREA	652.83 SQ.FT.	60.65 SQ.M.
BALCONY AREA	176.42 SQ.FT.	16.39 SQ.M.
TOTAL AREA	829.25 SQ.FT.	77.04 SQ.M.

KEY PLAN LEVEL 1

1



KEY SECTION



Disclaimer : All dimensions are in imperial and metric, and measured from finish to finish excluding construction tolerances. 2. All materials, dimensions, and drawings are approximate only. 3. Information is subject to change without notice, at developer's absolute discretion. 4. Actual area may vary from the stated area. 5. Drawings not to scale. 6. All images used are for illustrative purposes only and do not represent the actual size, features, specifications, fittings, and furnishings. 7. The developer reserves the right to make revisions / alterations, at it's absolute discretion, without any liability whatsoever.

ARLO

DUBAI CREEK HARBOUR



FLOOR PLAN



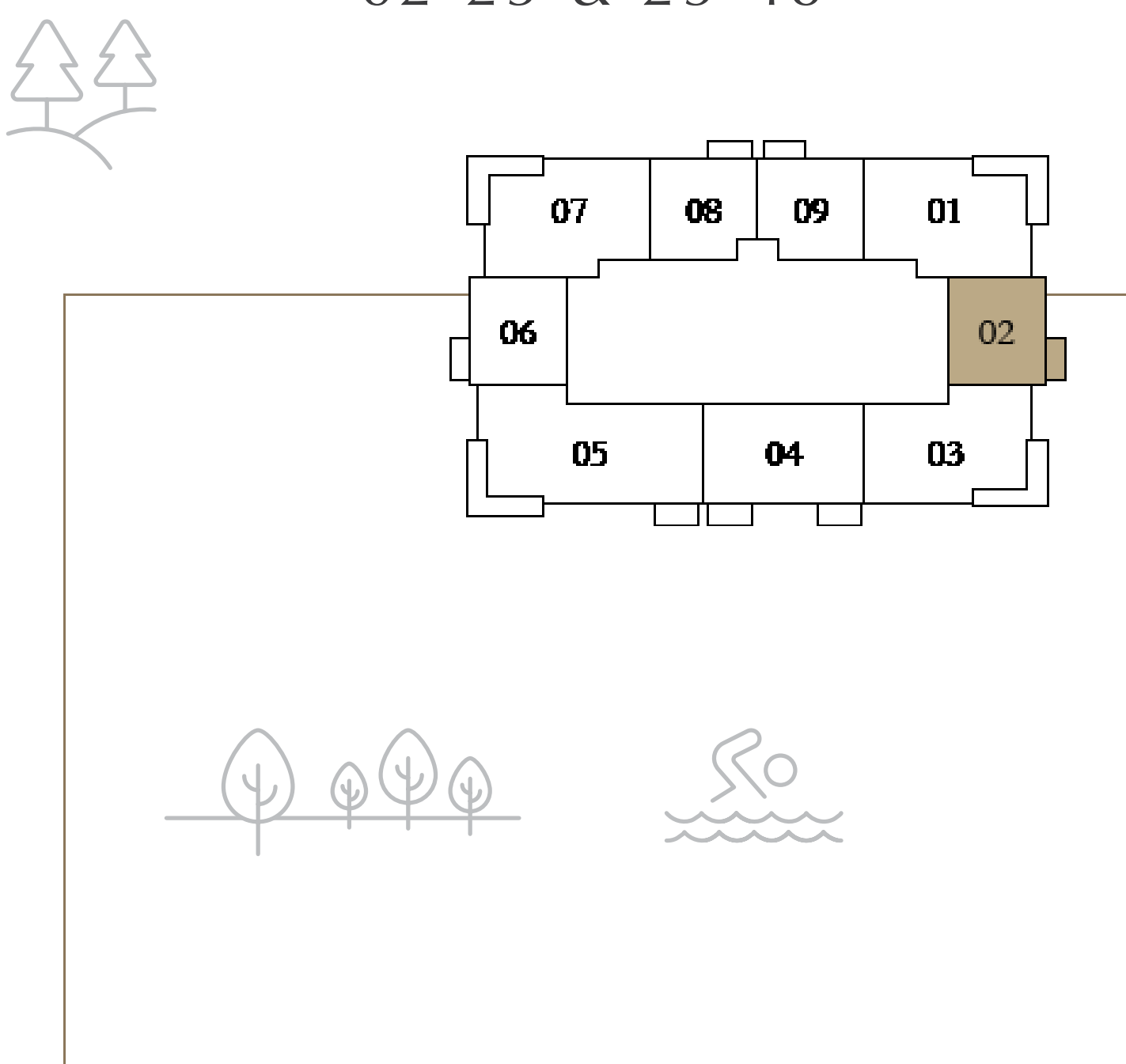
1 BEDROOM

LEVEL 02-23, 25-48

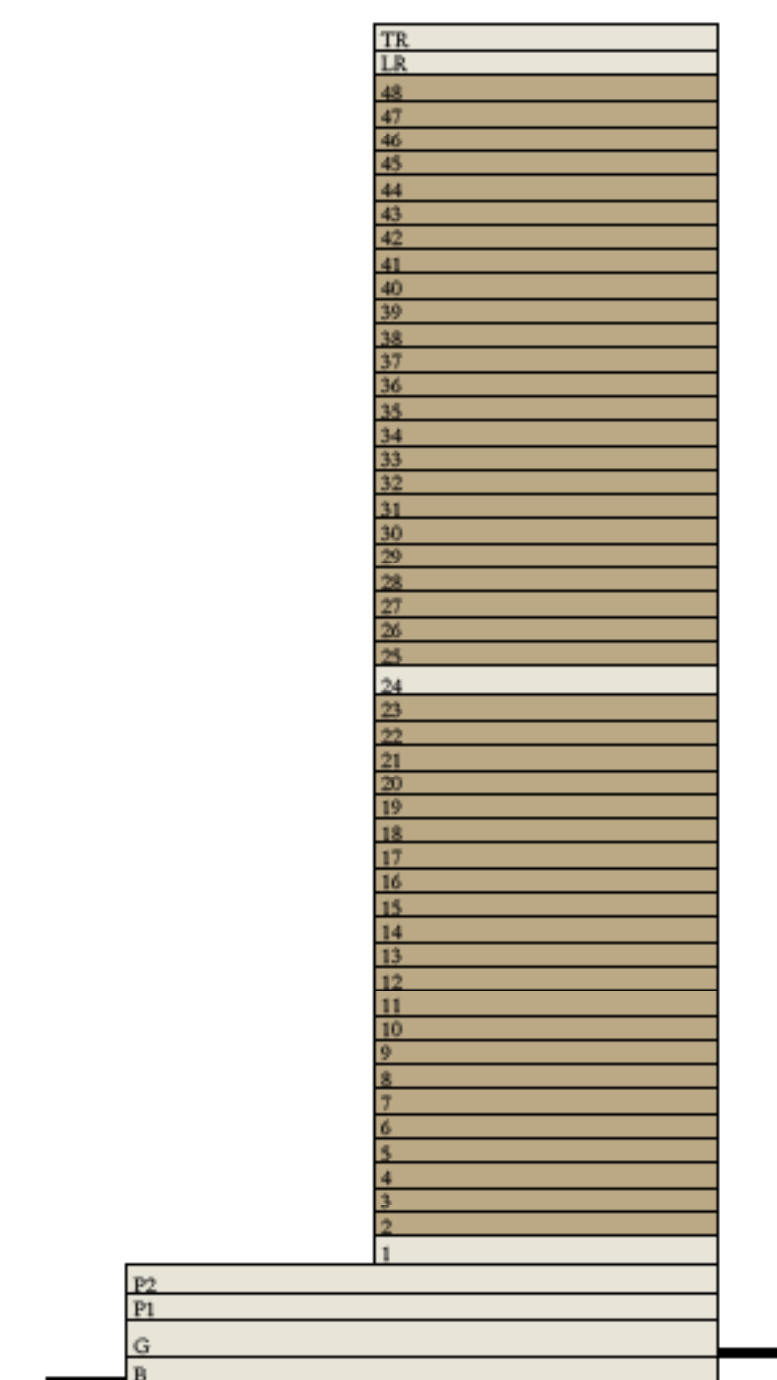
UNIT 02

SUITE AREA	654.02 SQ.FT.	60.76 SQ.M.
BALCONY AREA	55.11 SQ.FT.	5.12 SQ.M.
TOTAL AREA	709.13 SQ.FT.	65.88 SQ.M.

KEY PLAN LEVEL
02-23 & 25-48



KEY SECTION



Disclaimer : All dimensions are in imperial and metric, and measured from finish to finish excluding construction tolerances. 2. All materials, dimensions, and drawings are approximate only. 3. Information is subject to change without notice, at developer's absolute discretion. 4. Actual area may vary from the stated area. 5. Drawings not to scale. 6. All images used are for illustrative purposes only and do not represent the actual size, features, specifications, fittings, and furnishings. 7. The developer reserves the right to make revisions / alterations, at it's absolute discretion, without any liability whatsoever.

ARLO

DUBAI CREEK HARBOUR



FLOOR PLAN

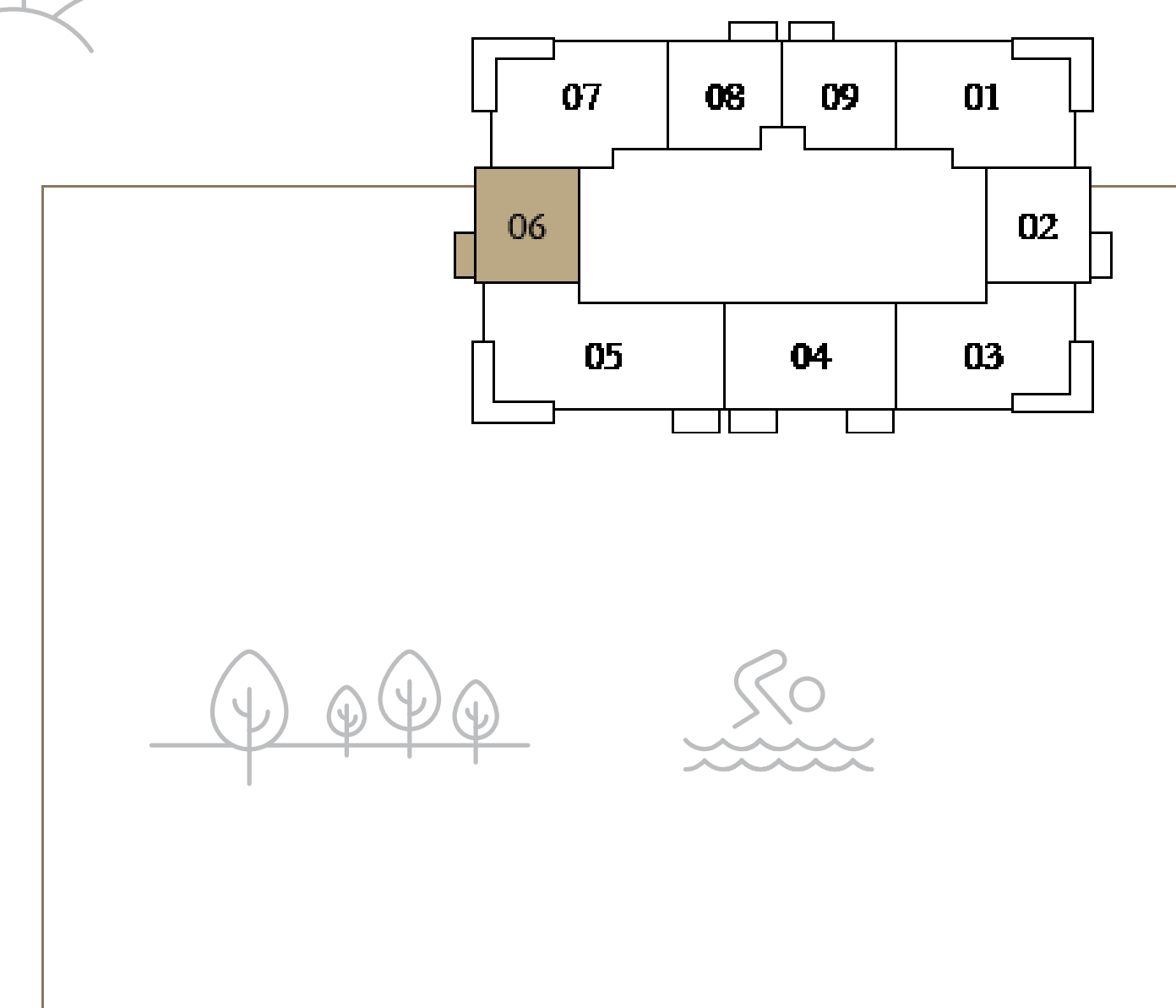


1 BEDROOM

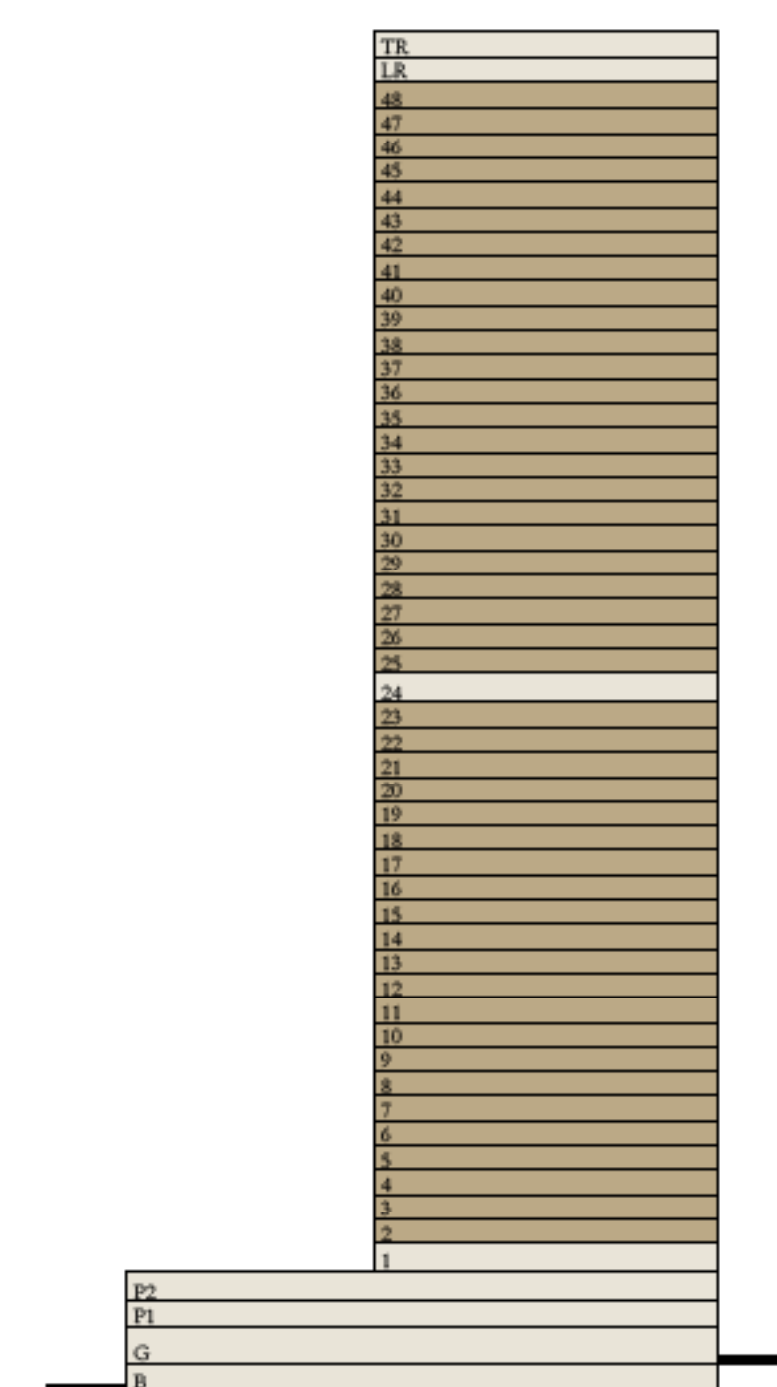
LEVEL 02-23, 25-48 UNIT 06

SUITE AREA	653.80 SQ.FT.	60.74 SQ.M.
BALCONY AREA	55.22 SQ.FT.	5.13 SQ.M.
TOTAL AREA	709.02 SQ.FT.	65.87 SQ.M.

KEY PLAN LEVEL
02-23 & 25-48



KEY SECTION



Disclaimer : All dimensions are in imperial and metric, and measured from finish to finish excluding construction tolerances. 2. All materials, dimensions, and drawings are approximate only. 3. Information is subject to change without notice, at developer's absolute discretion. 4. Actual area may vary from the stated area. 5. Drawings not to scale. 6. All images used are for illustrative purposes only and do not represent the actual size, features, specifications, fittings, and furnishings. 7. The developer reserves the right to make revisions / alterations, at its absolute discretion, without any liability whatsoever.

ARLO

DUBAI CREEK HARBOUR



FLOOR PLAN



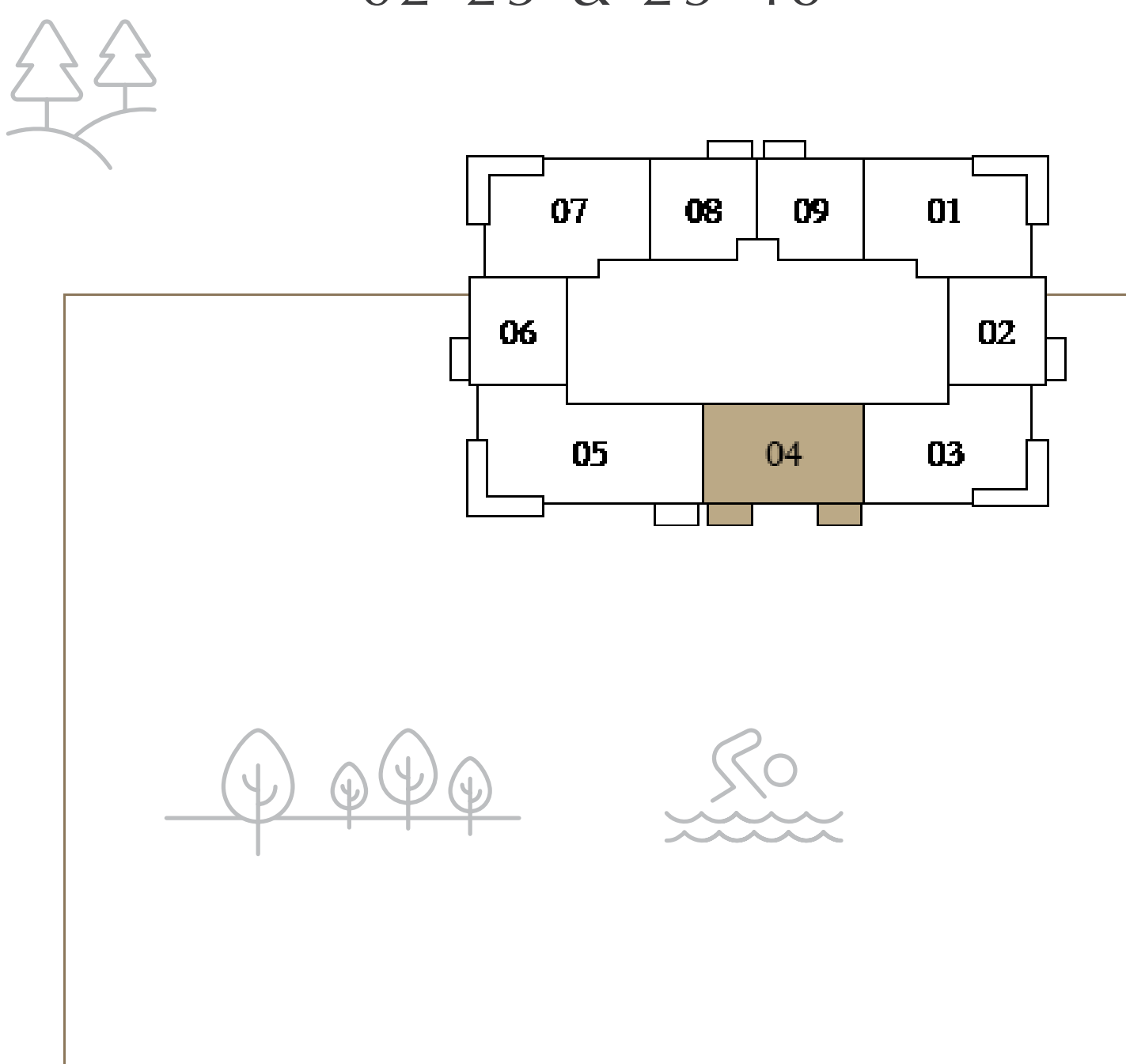
2 BEDROOM

LEVEL 02-23, 25-48

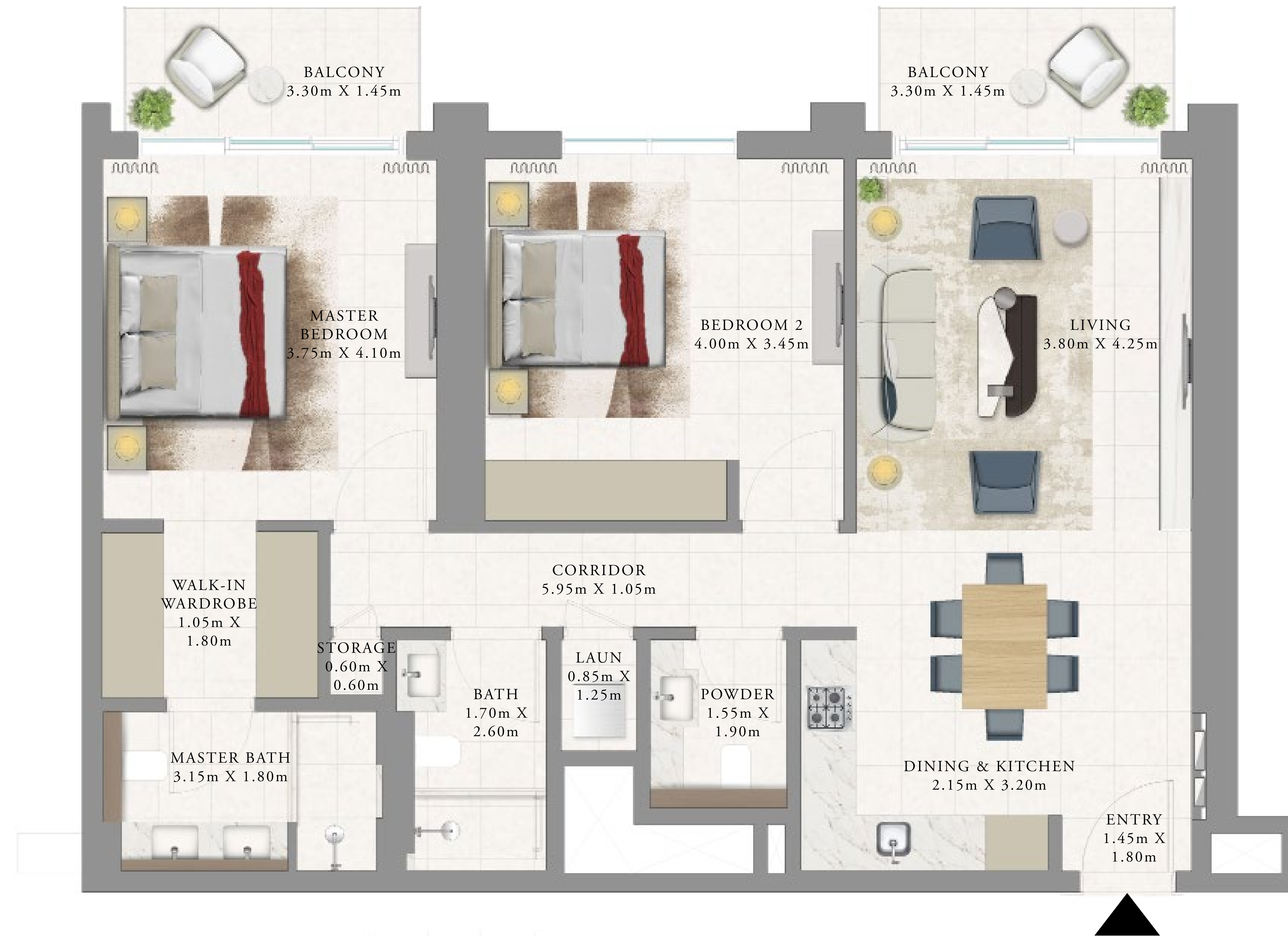
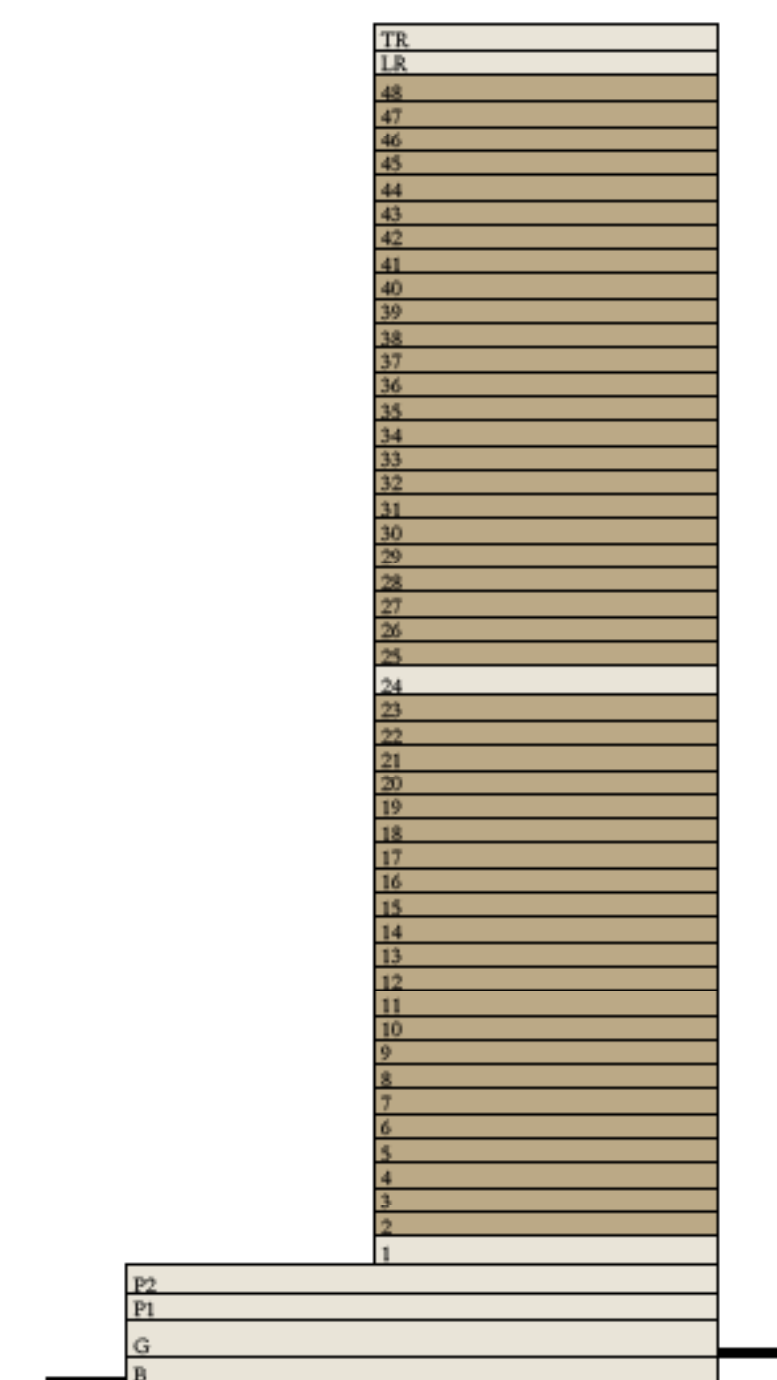
UNIT 04

SUITE AREA	1098.46 SQ.FT.	102.05 SQ.M.
BALCONY AREA	110.33 SQ.FT.	10.25 SQ.M.
TOTAL AREA	1208.79 SQ.FT.	112.30 SQ.M.

KEY PLAN LEVEL
02-23 & 25-48



KEY SECTION



Disclaimer : All dimensions are in imperial and metric, and measured from finish to finish excluding construction tolerances. 2. All materials, dimensions, and drawings are approximate only. 3. Information is subject to change without notice, at developer's absolute discretion. 4. Actual area may vary from the stated area. 5. Drawings not to scale. 6. All images used are for illustrative purposes only and do not represent the actual size, features, specifications, fittings, and furnishings. 7. The developer reserves the right to make revisions / alterations, at it's absolute discretion, without any liability whatsoever.

ARLO

DUBAI CREEK HARBOUR



FLOOR PLAN



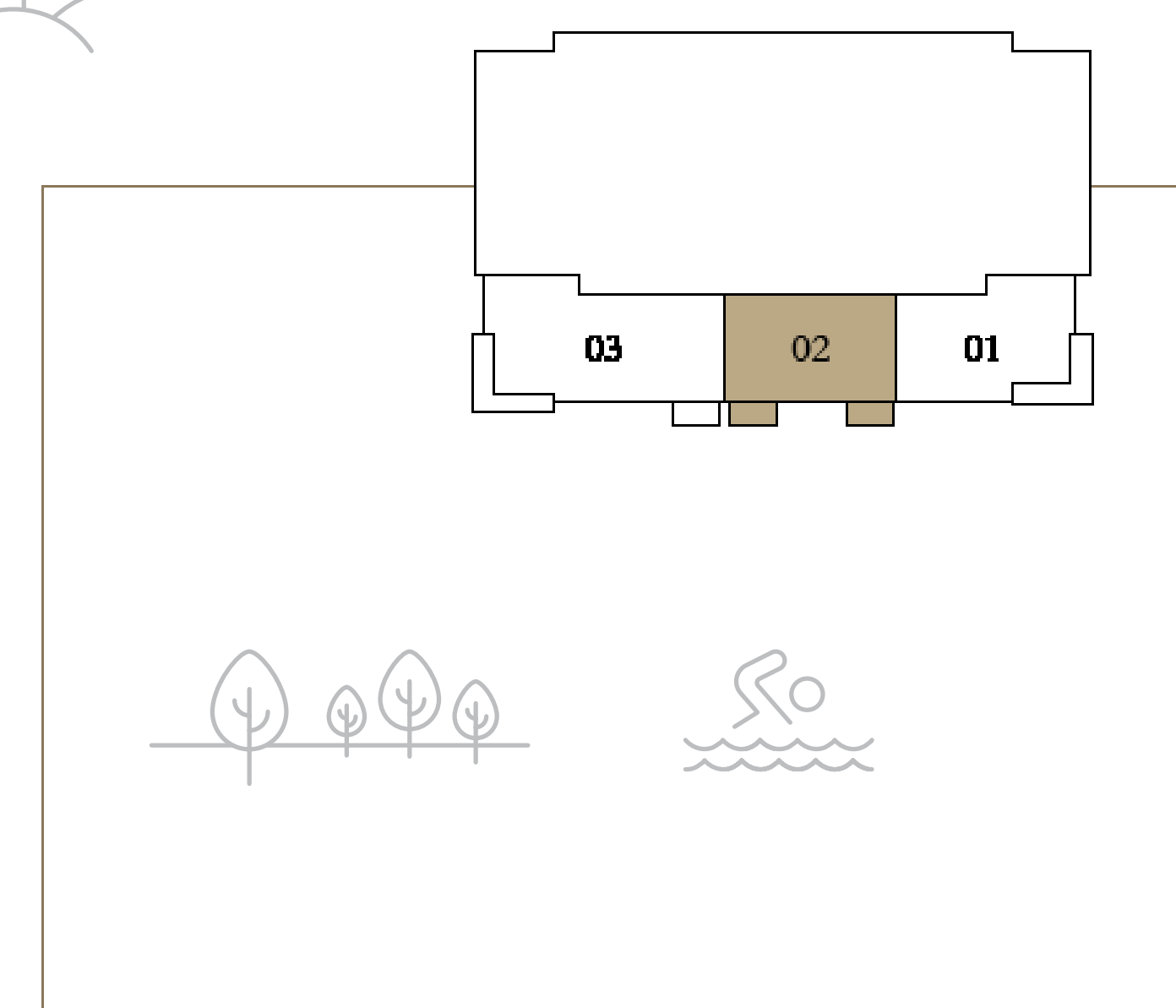
2 BEDROOM

LEVEL 24

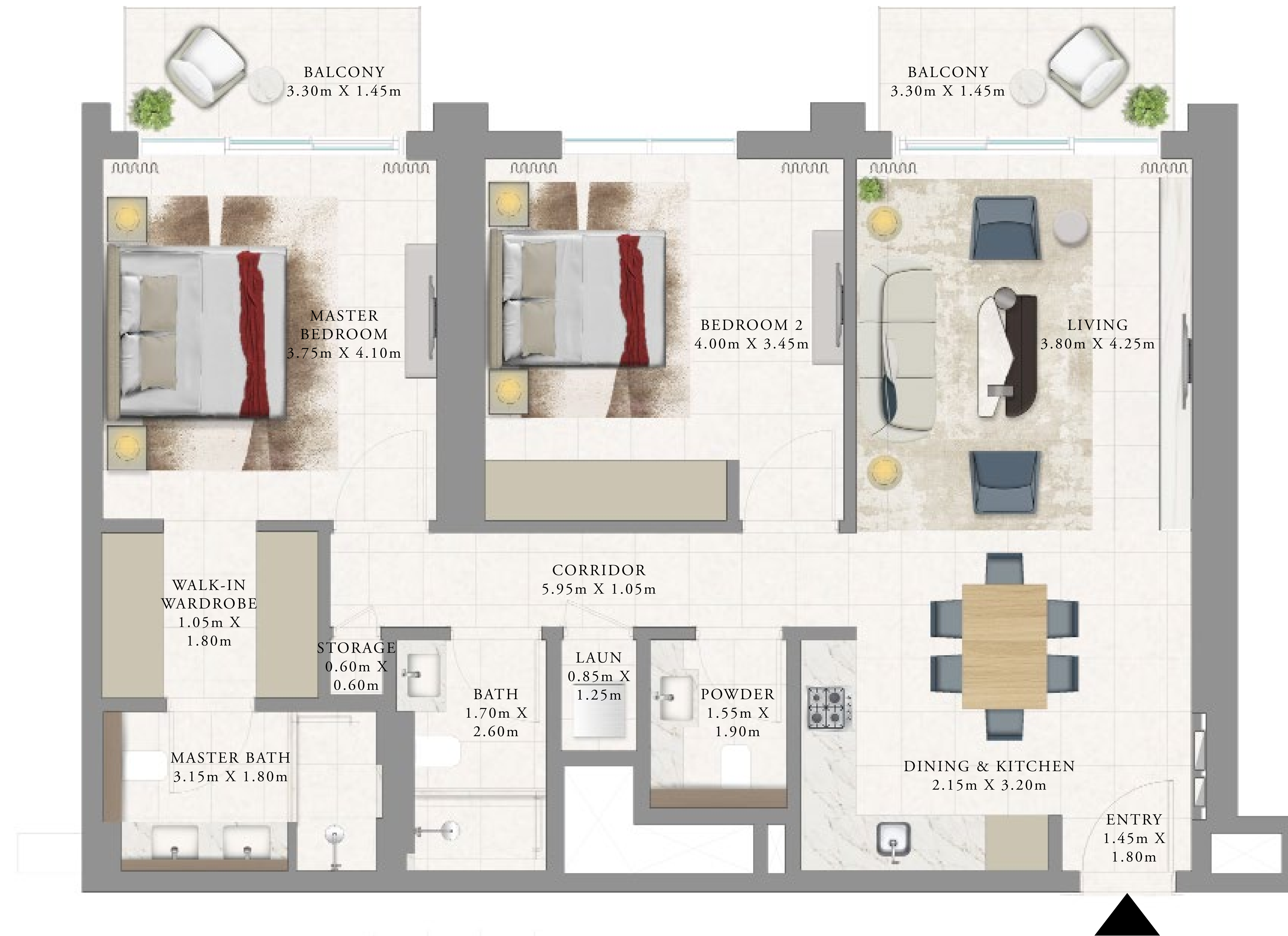
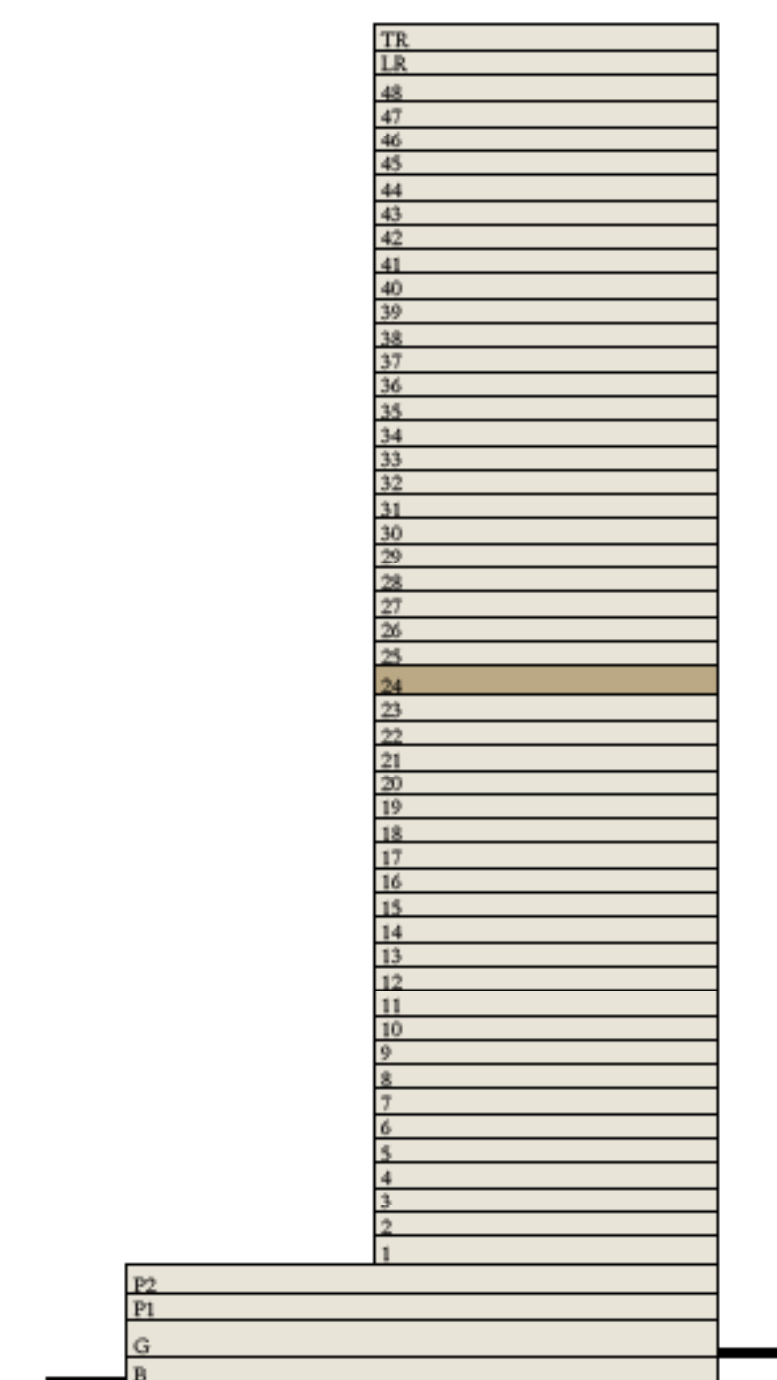
UNIT 02

SUITE AREA	1098.46 SQ.FT.	102.05 SQ.M.
BALCONY AREA	110.33 SQ.FT.	10.25 SQ.M.
TOTAL AREA	1208.79 SQ.FT.	112.30 SQ.M.

KEY PLAN LEVEL 24



KEY SECTION



Disclaimer : All dimensions are in imperial and metric, and measured from finish to finish excluding construction tolerances. 2. All materials, dimensions, and drawings are approximate only. 3. Information is subject to change without notice, at developer's absolute discretion. 4. Actual area may vary from the stated area. 5. Drawings not to scale. 6. All images used are for illustrative purposes only and do not represent the actual size, features, specifications, fittings, and furnishings. 7. The developer reserves the right to make revisions / alterations, at it's absolute discretion, without any liability whatsoever.

ARLO

DUBAI CREEK HARBOUR



FLOOR PLAN



2 BEDROOM

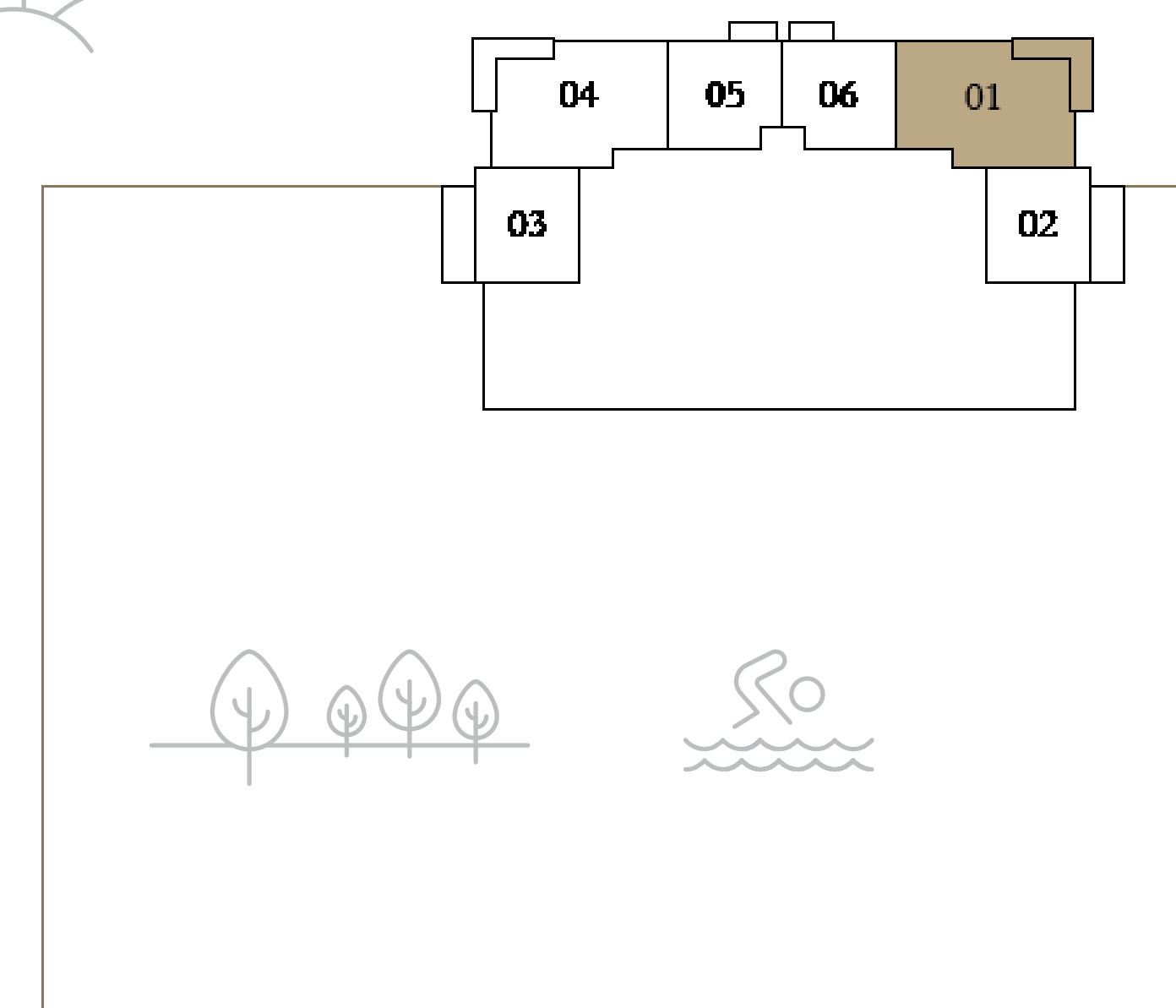
LEVEL 1

UNIT 01

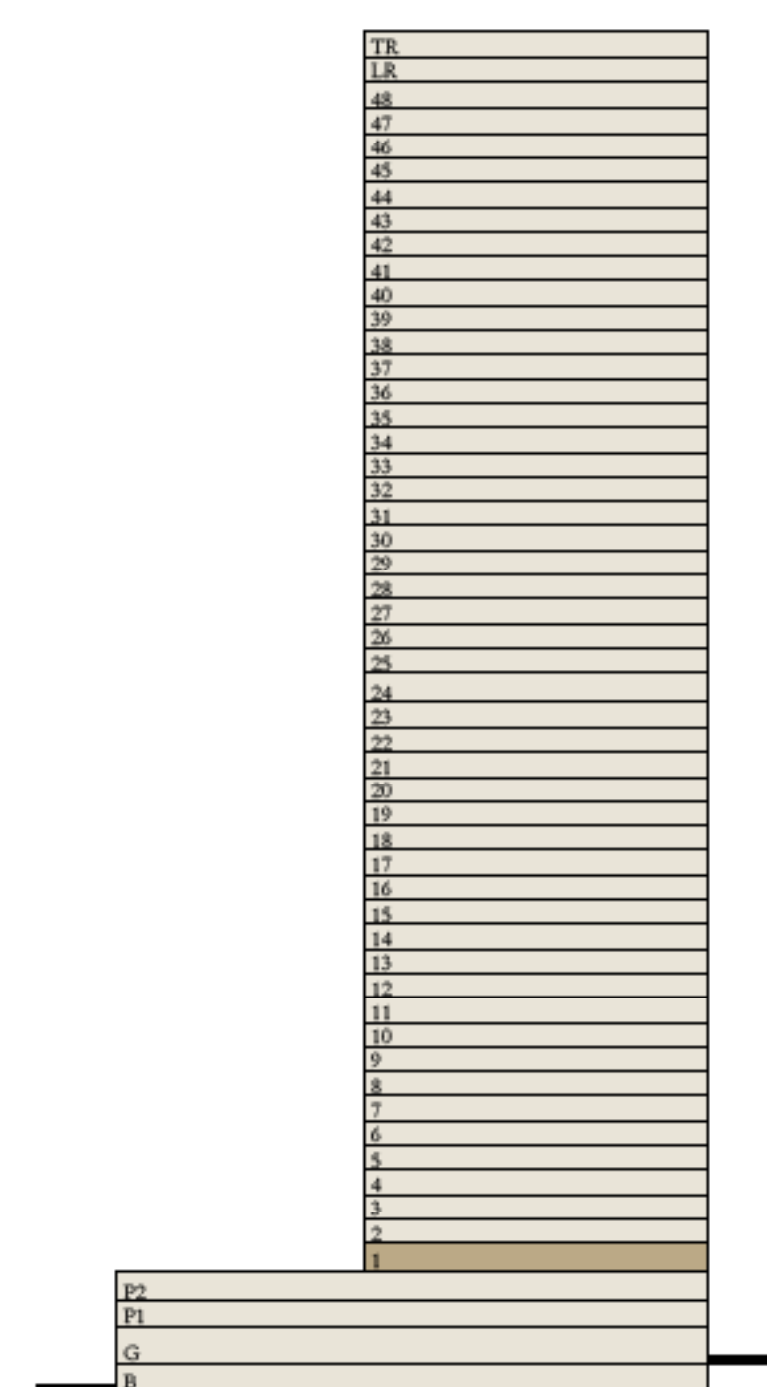
SUITE AREA	1099.00 SQ.FT.	102.10 SQ.M.
BALCONY AREA	159.41 SQ.FT.	14.81 SQ.M.
TOTAL AREA	1258.41 SQ.FT.	116.91 SQ.M.

KEY PLAN LEVEL 1

1



KEY SECTION



Disclaimer : All dimensions are in imperial and metric, and measured from finish to finish excluding construction tolerances. 2. All materials, dimensions, and drawings are approximate only. 3. Information is subject to change without notice, at developer's absolute discretion. 4. Actual area may vary from the stated area. 5. Drawings not to scale. 6. All images used are for illustrative purposes only and do not represent the actual size, features, specifications, fittings, and furnishings. 7. The developer reserves the right to make revisions / alterations, at it's absolute discretion, without any liability whatsoever.

ARLO

DUBAI CREEK HARBOUR



FLOOR PLAN

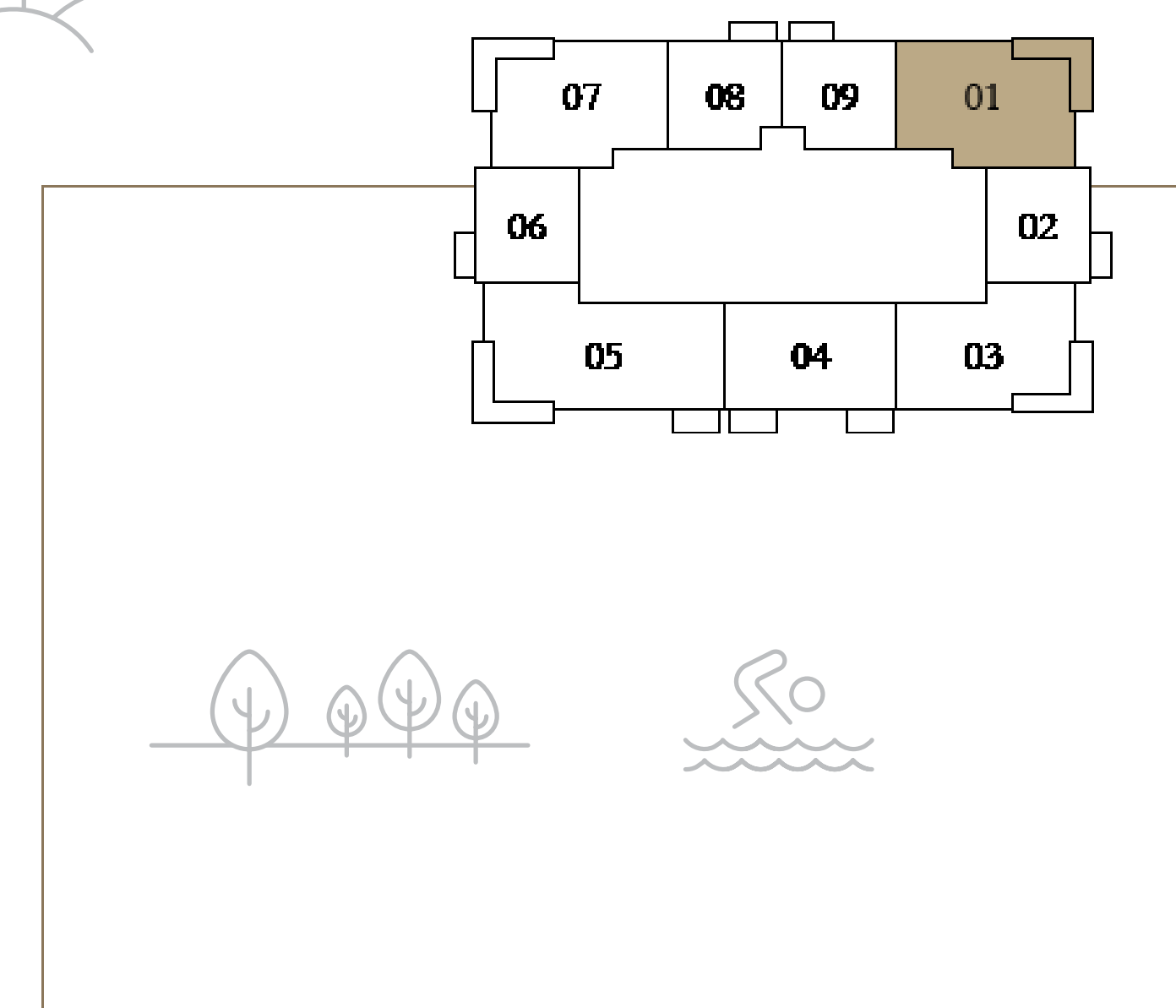


2 BEDROOM

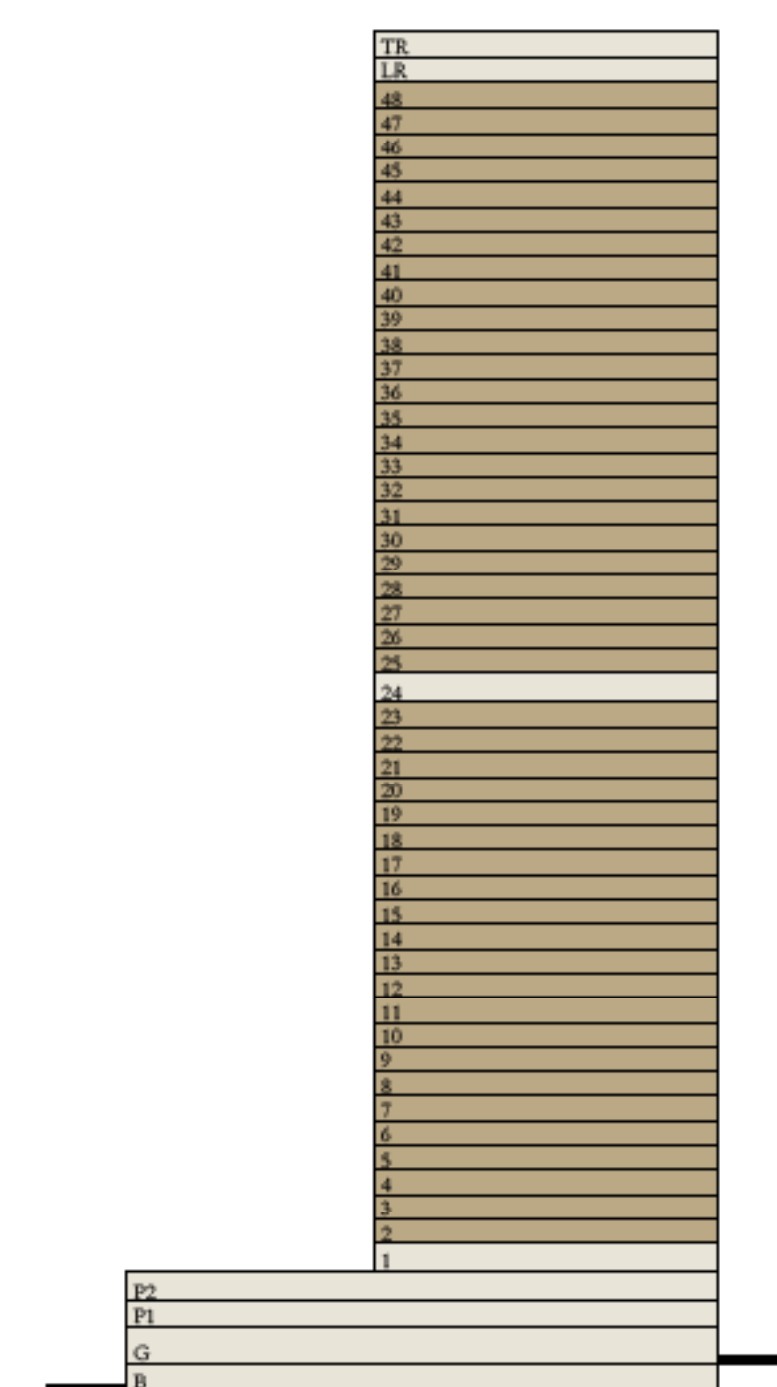
LEVEL 02-23, 25-48 UNIT 01

SUITE AREA	1099.00 SQ.FT.	102.10 SQ.M.
BALCONY AREA	159.41 SQ.FT.	14.81 SQ.M.
TOTAL AREA	1258.41 SQ.FT.	116.91 SQ.M.

KEY PLAN LEVEL
02-23 & 25-48



KEY SECTION



Disclaimer : All dimensions are in imperial and metric, and measured from finish to finish excluding construction tolerances. 2. All materials, dimensions, and drawings are approximate only. 3. Information is subject to change without notice, at developer's absolute discretion. 4. Actual area may vary from the stated area. 5. Drawings not to scale. 6. All images used are for illustrative purposes only and do not represent the actual size, features, specifications, fittings, and furnishings. 7. The developer reserves the right to make revisions / alterations, at it's absolute discretion, without any liability whatsoever.

ARLO

DUBAI CREEK HARBOUR



FLOOR PLAN



2 BEDROOM

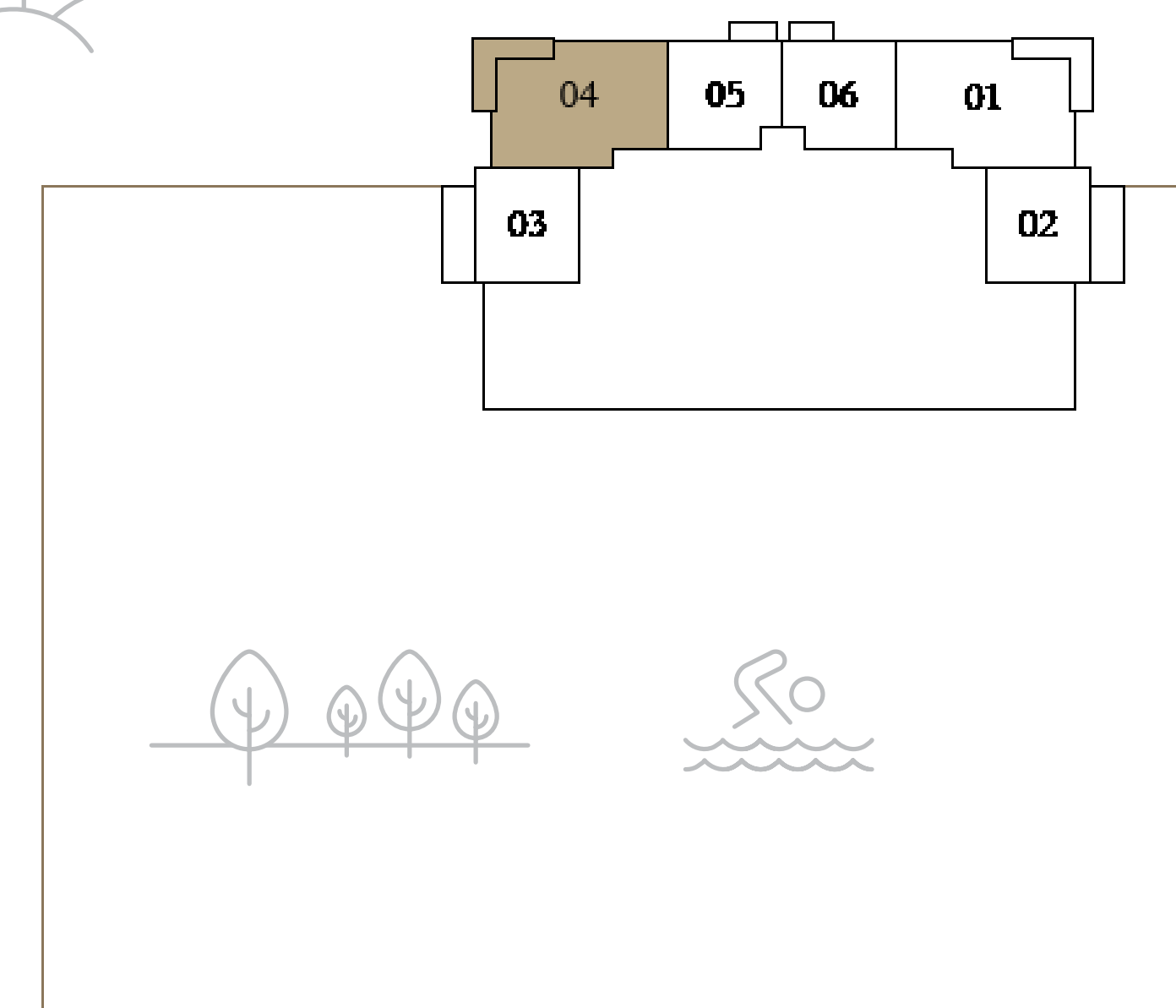
LEVEL 1

UNIT 04

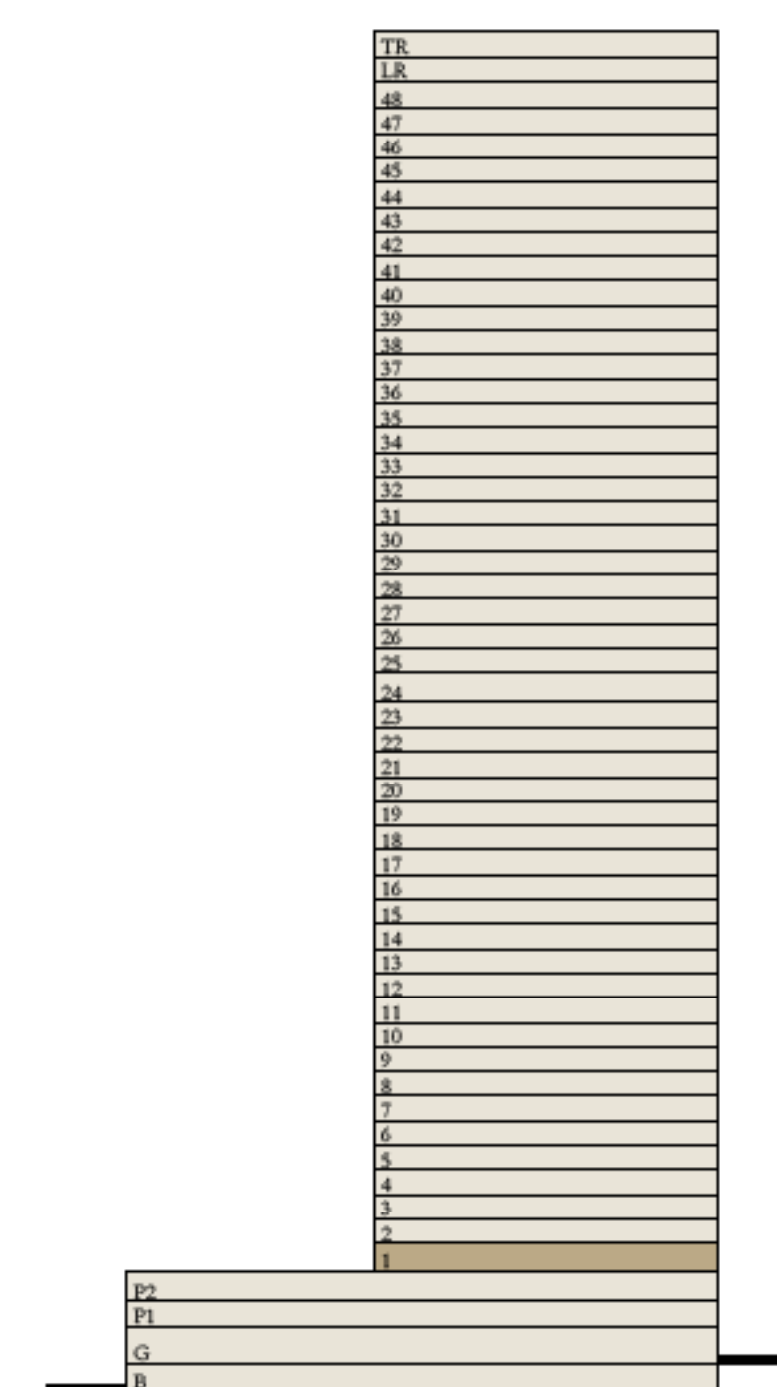
SUITE AREA	1099.00 SQ.FT.	102.10 SQ.M.
BALCONY AREA	159.41 SQ.FT.	14.81 SQ.M.
TOTAL AREA	1258.41 SQ.FT.	116.91 SQ.M.

KEY PLAN LEVEL 1

1



KEY SECTION



Disclaimer : All dimensions are in imperial and metric, and measured from finish to finish excluding construction tolerances. 2. All materials, dimensions, and drawings are approximate only. 3. Information is subject to change without notice, at developer's absolute discretion. 4. Actual area may vary from the stated area. 5. Drawings not to scale. 6. All images used are for illustrative purposes only and do not represent the actual size, features, specifications, fittings, and furnishings. 7. The developer reserves the right to make revisions / alterations, at it's absolute discretion, without any liability whatsoever.

EMAAR

ARLO

DUBAI CREEK HARBOUR



FLOOR PLAN



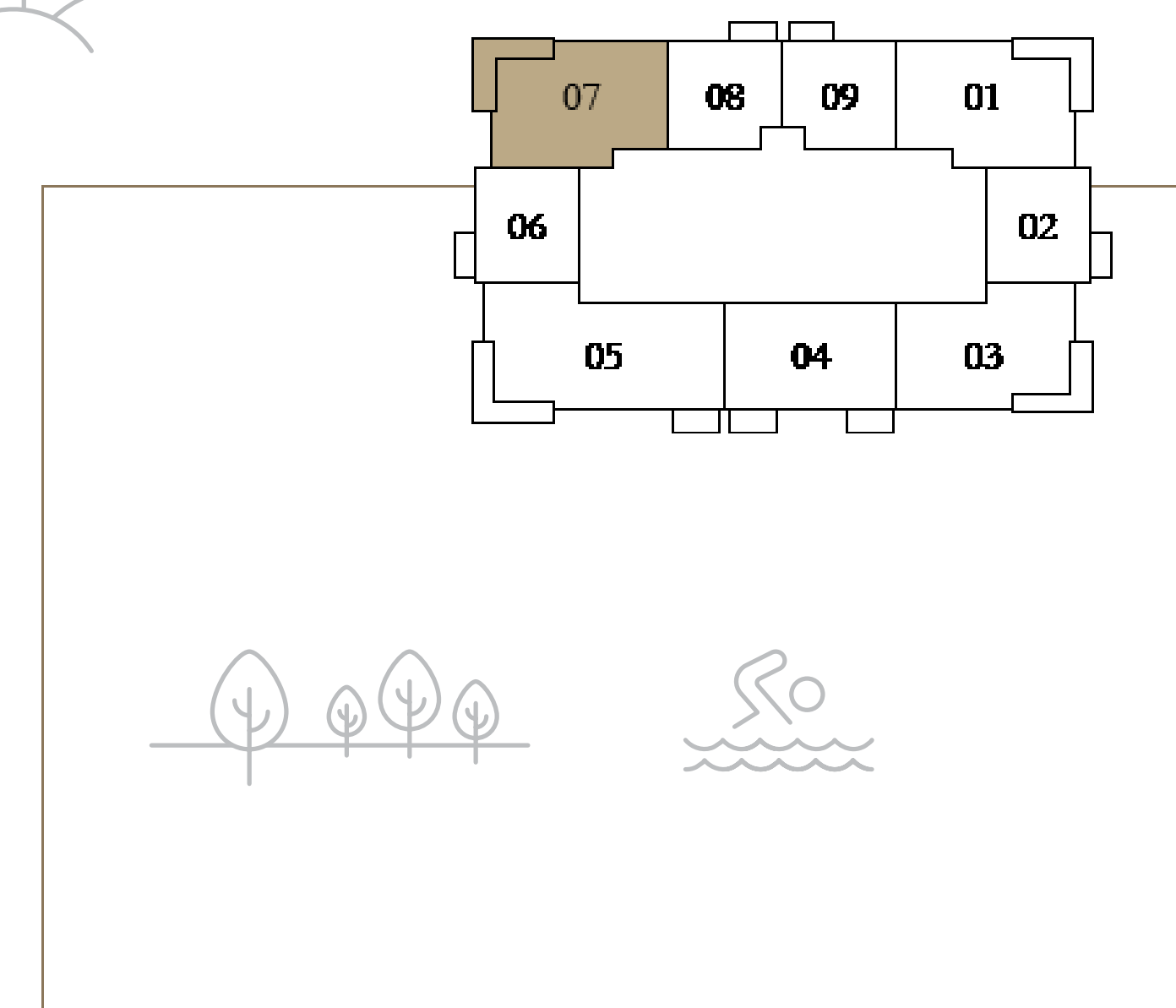
2 BEDROOM

LEVEL 02-23, 25-48

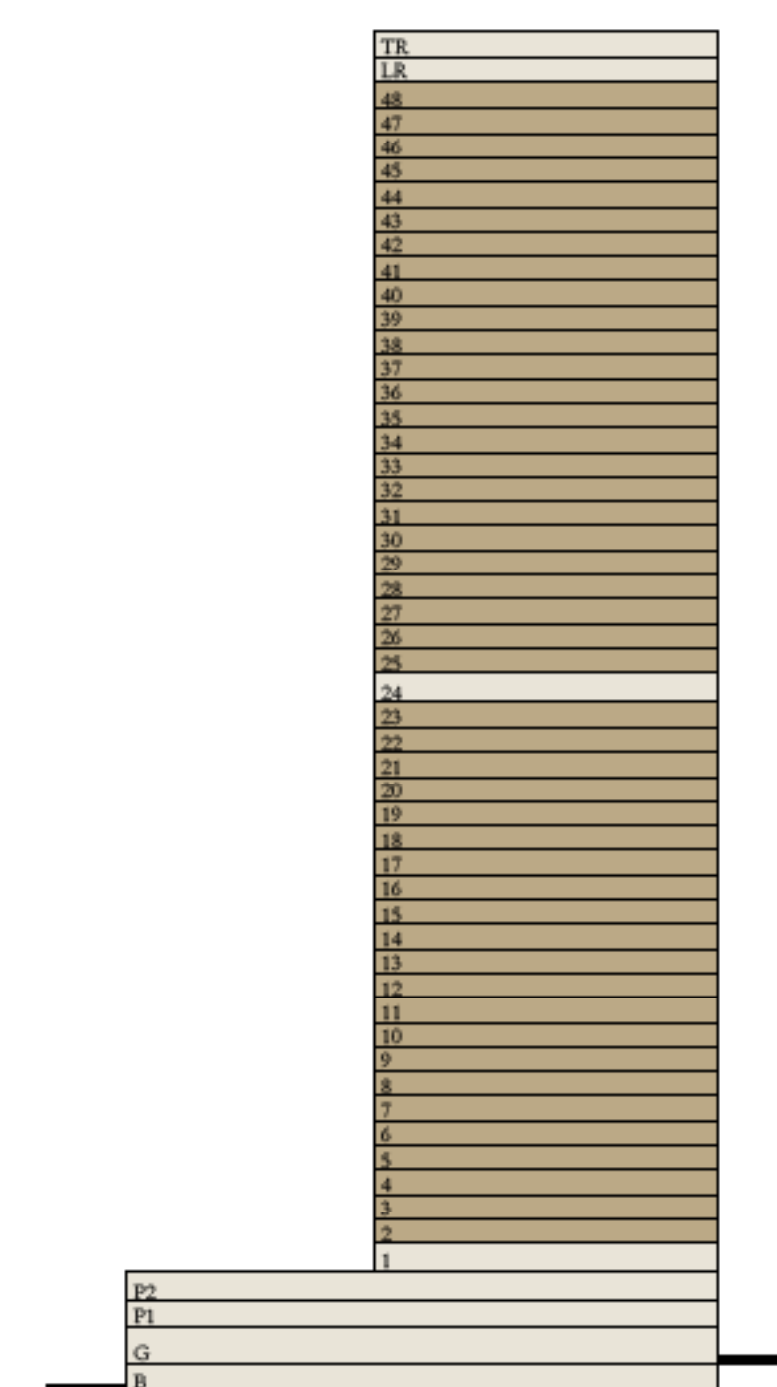
UNIT 07

SUITE AREA	1099.00 SQ.FT.	102.10 SQ.M.
BALCONY AREA	159.41 SQ.FT.	14.81 SQ.M.
TOTAL AREA	1258.41 SQ.FT.	116.91 SQ.M.

KEY PLAN LEVEL
02-23 & 25-48



KEY SECTION



Disclaimer : All dimensions are in imperial and metric, and measured from finish to finish excluding construction tolerances. 2. All materials, dimensions, and drawings are approximate only. 3. Information is subject to change without notice, at developer's absolute discretion. 4. Actual area may vary from the stated area. 5. Drawings not to scale. 6. All images used are for illustrative purposes only and do not represent the actual size, features, specifications, fittings, and furnishings. 7. The developer reserves the right to make revisions / alterations, at it's absolute discretion, without any liability whatsoever.

ARLO

DUBAI CREEK HARBOUR



FLOOR PLAN

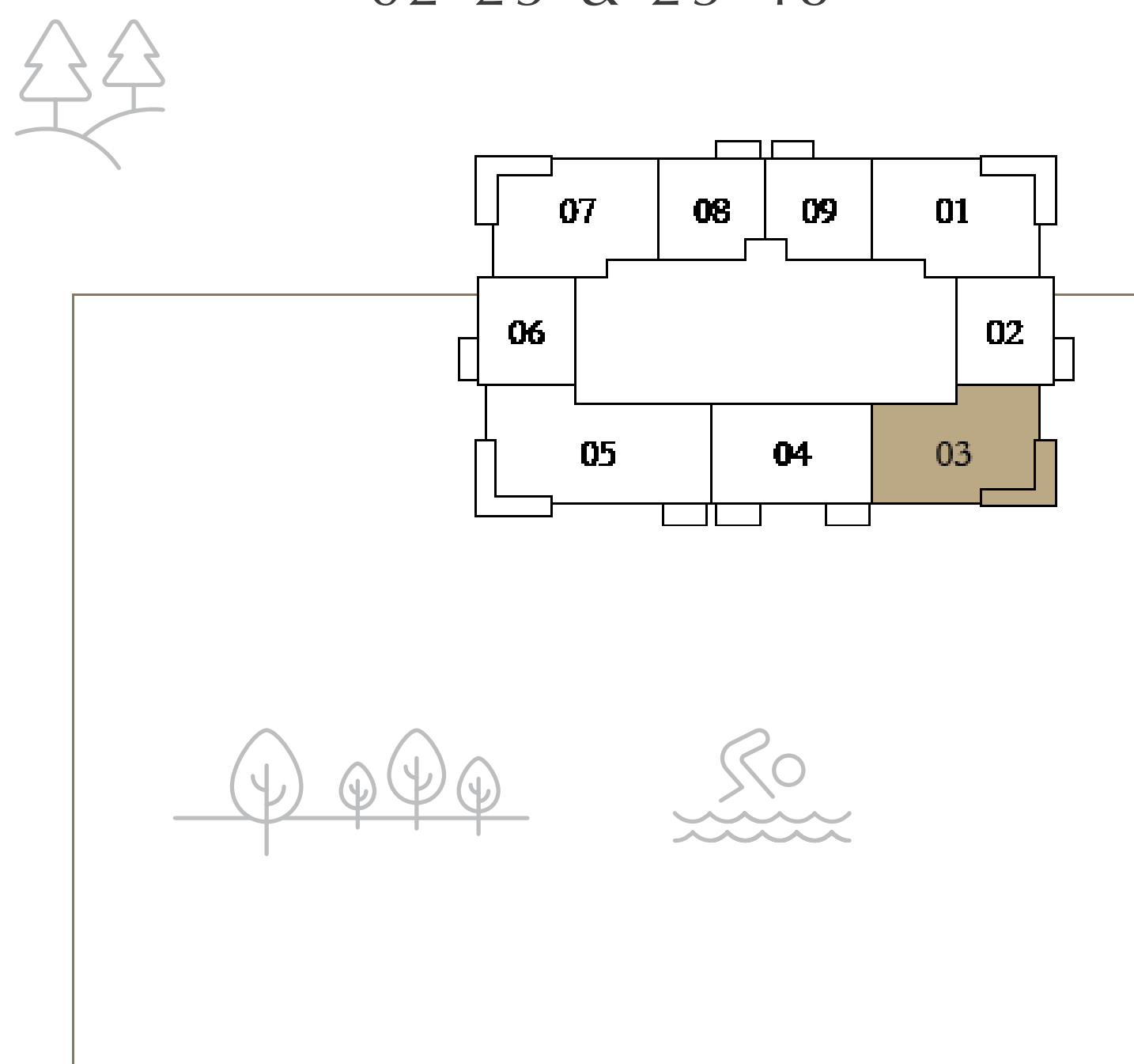


2 BEDROOM

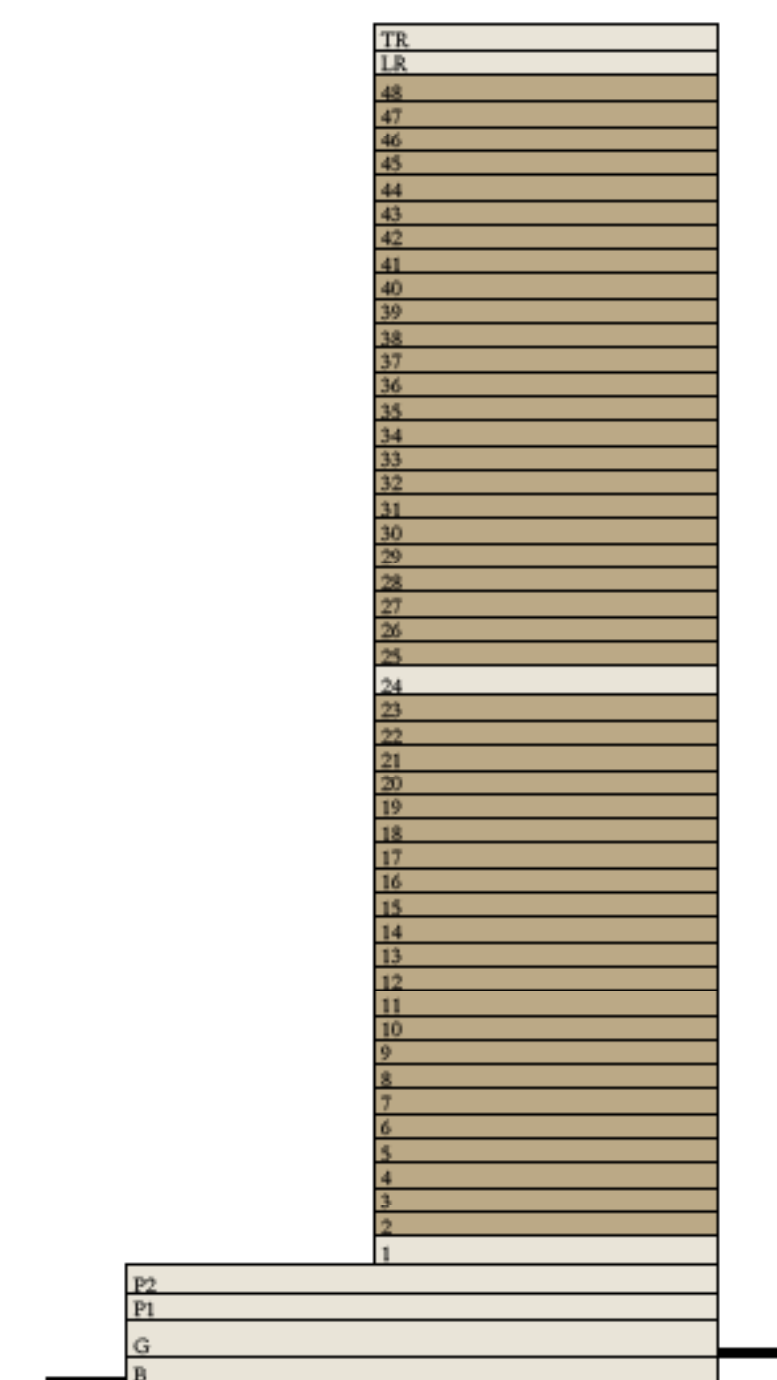
LEVEL 02-23, 25-48 UNIT 03

SUITE AREA	1107.18 SQ.FT.	102.86 SQ.M.
BALCONY AREA	154.03 SQ.FT.	14.31 SQ.M.
TOTAL AREA	1261.21 SQ.FT.	117.17 SQ.M.

KEY PLAN LEVEL
02-23 & 25-48



KEY SECTION



Disclaimer : All dimensions are in imperial and metric, and measured from finish to finish excluding construction tolerances. 2. All materials, dimensions, and drawings are approximate only. 3. Information is subject to change without notice, at developer's absolute discretion. 4. Actual area may vary from the stated area. 5. Drawings not to scale. 6. All images used are for illustrative purposes only and do not represent the actual size, features, specifications, fittings, and furnishings. 7. The developer reserves the right to make revisions / alterations, at it's absolute discretion, without any liability whatsoever.

ARLO

DUBAI CREEK HARBOUR



FLOOR PLAN



2 BEDROOM

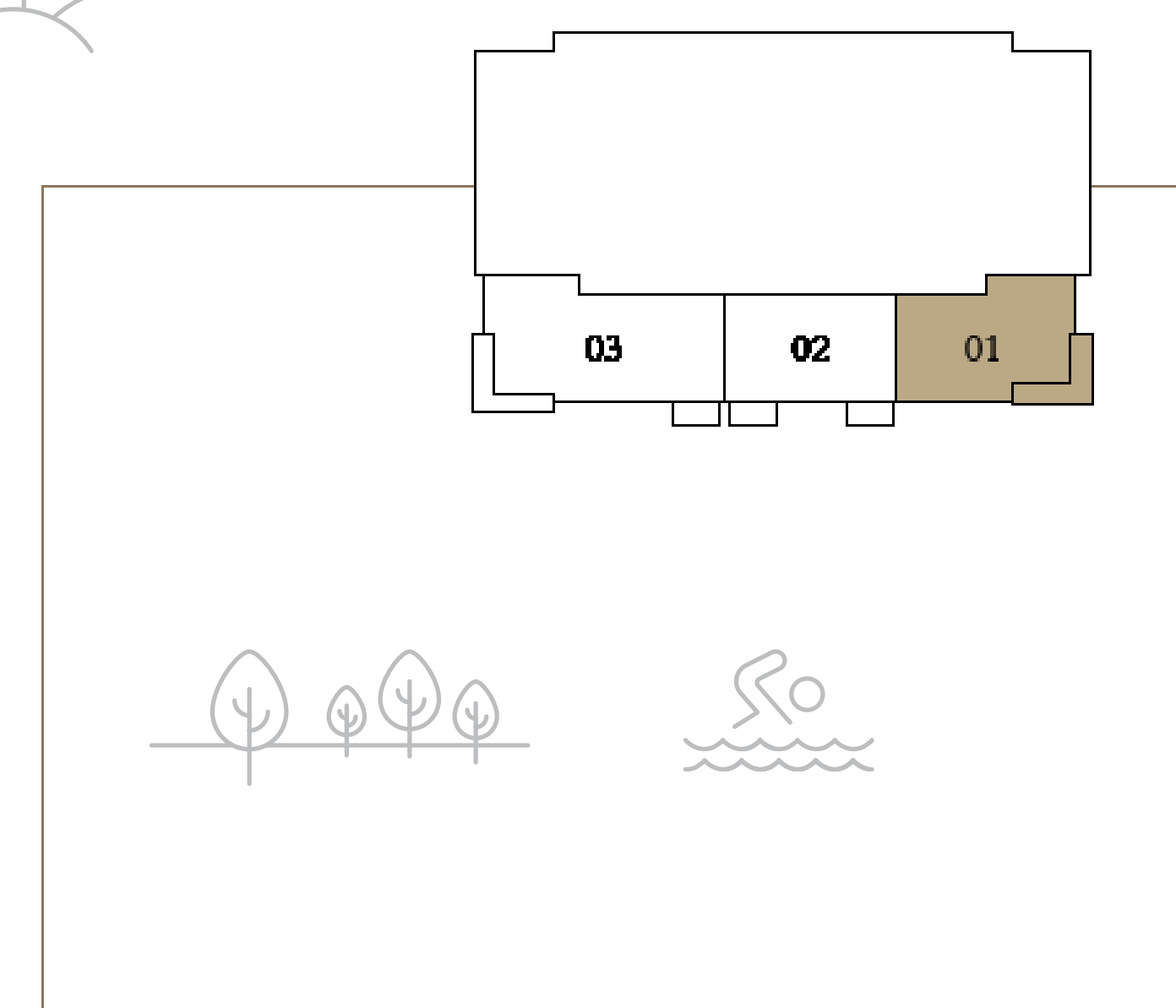
LEVEL 24

UNIT 01

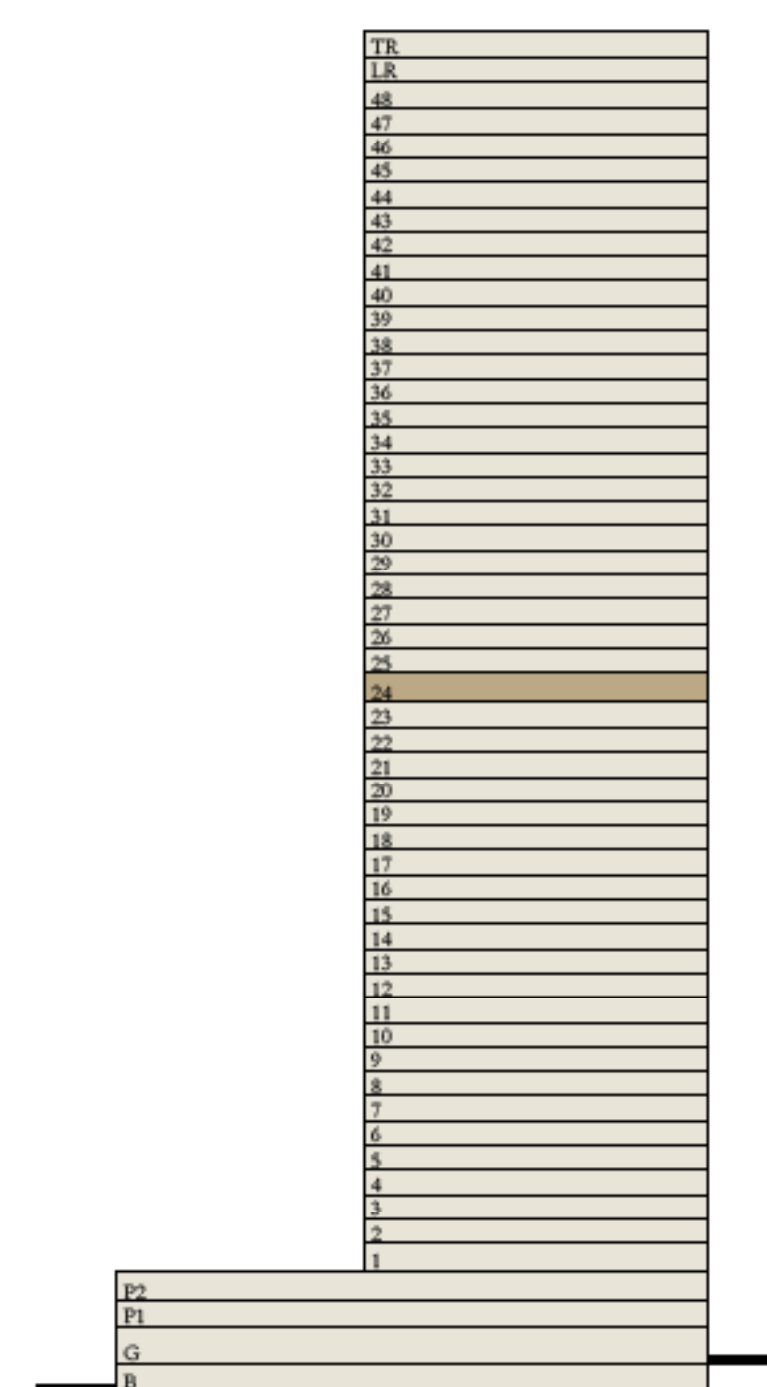
SUITE AREA	1107.18 SQ.FT.	102.86 SQ.M.
BALCONY AREA	154.03 SQ.FT.	14.31 SQ.M.
TOTAL AREA	1261.21 SQ.FT.	117.17 SQ.M.

KEY PLAN LEVEL

24



KEY SECTION



Disclaimer : All dimensions are in imperial and metric, and measured from finish to finish excluding construction tolerances. 2. All materials, dimensions, and drawings are approximate only. 3. Information is subject to change without notice, at developer's absolute discretion. 4. Actual area may vary from the stated area. 5. Drawings not to scale. 6. All images used are for illustrative purposes only and do not represent the actual size, features, specifications, fittings, and furnishings. 7. The developer reserves the right to make revisions / alterations, at it's absolute discretion, without any liability whatsoever.

ARLO

DUBAI CREEK HARBOUR



FLOOR PLAN

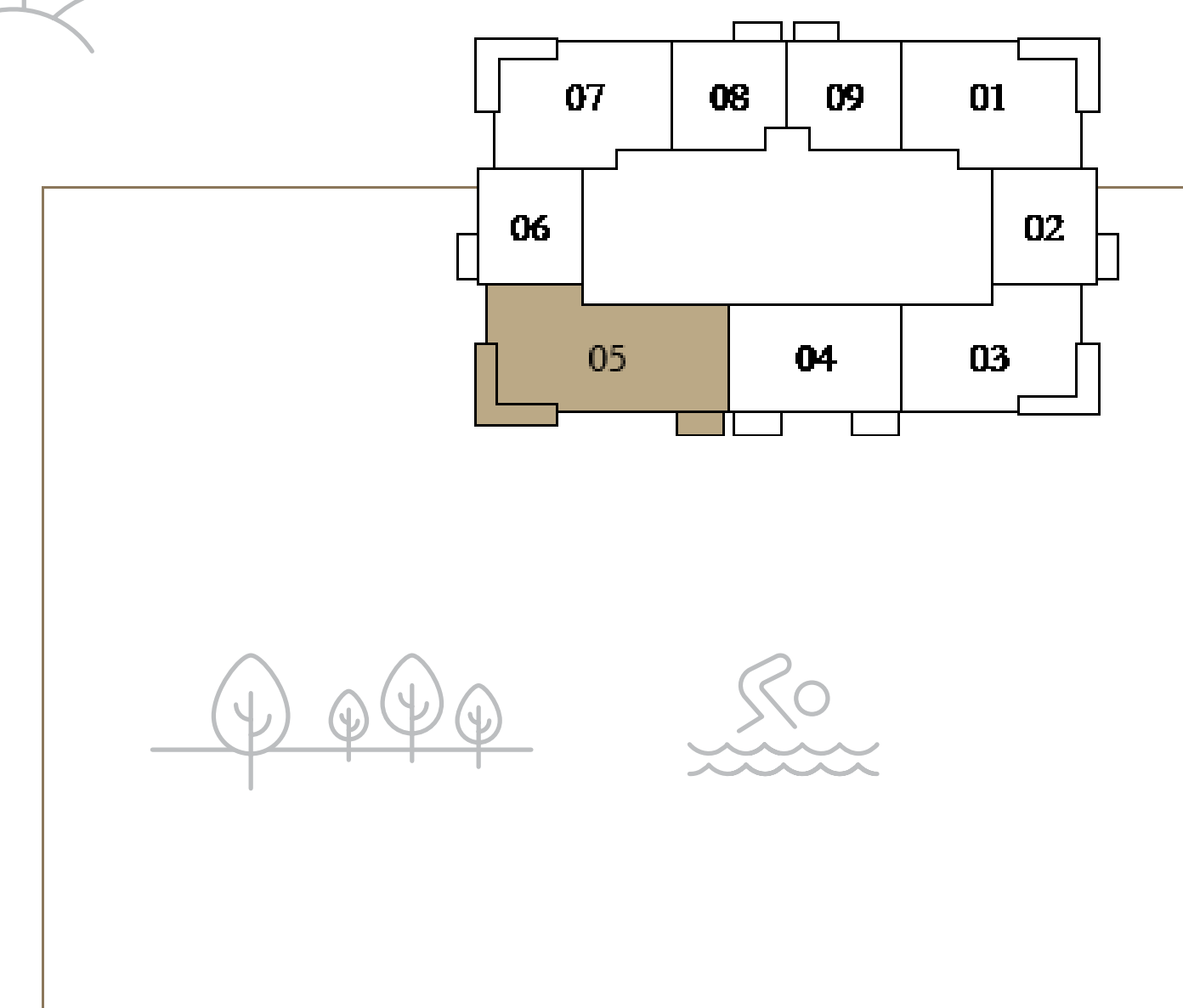


3 BEDROOM

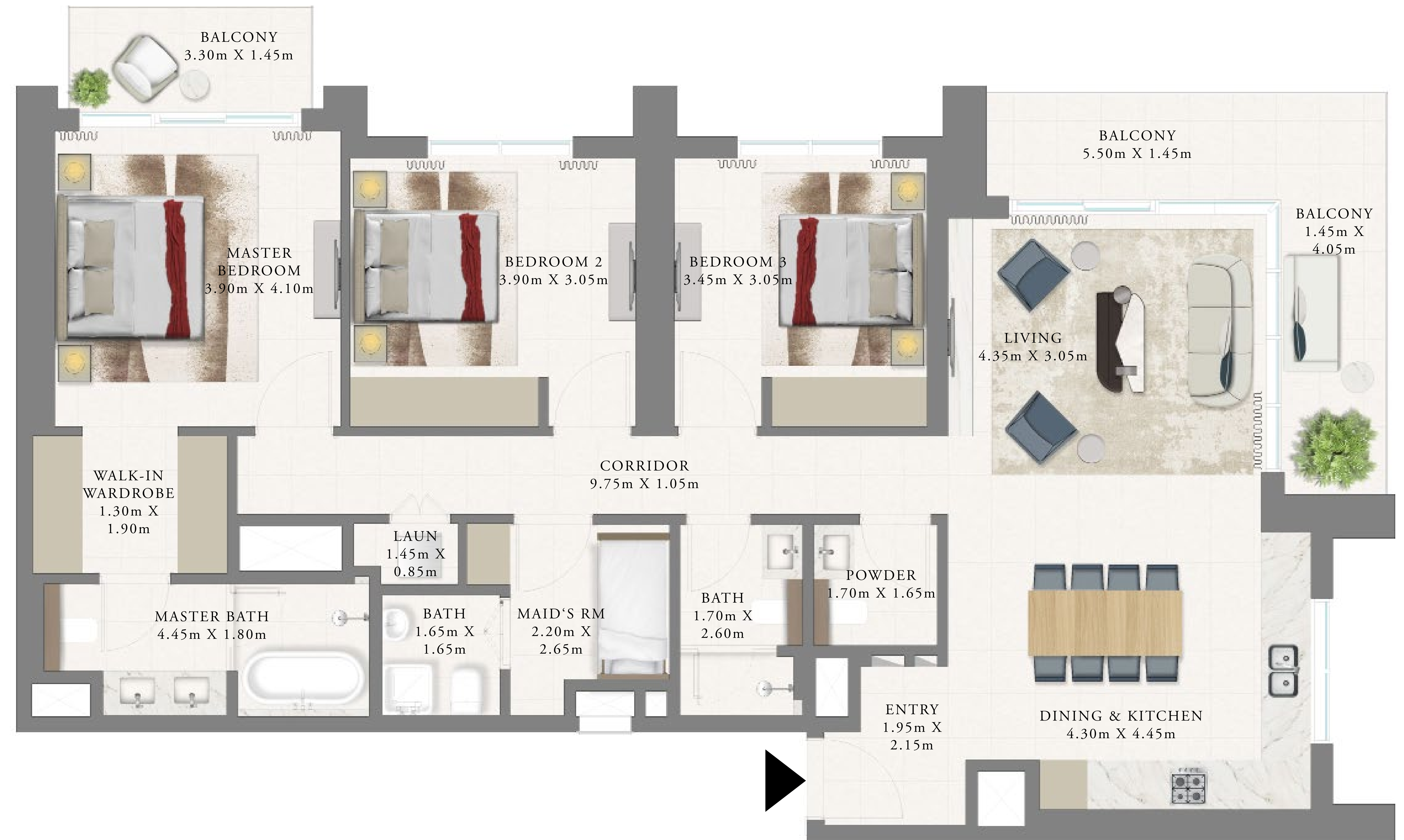
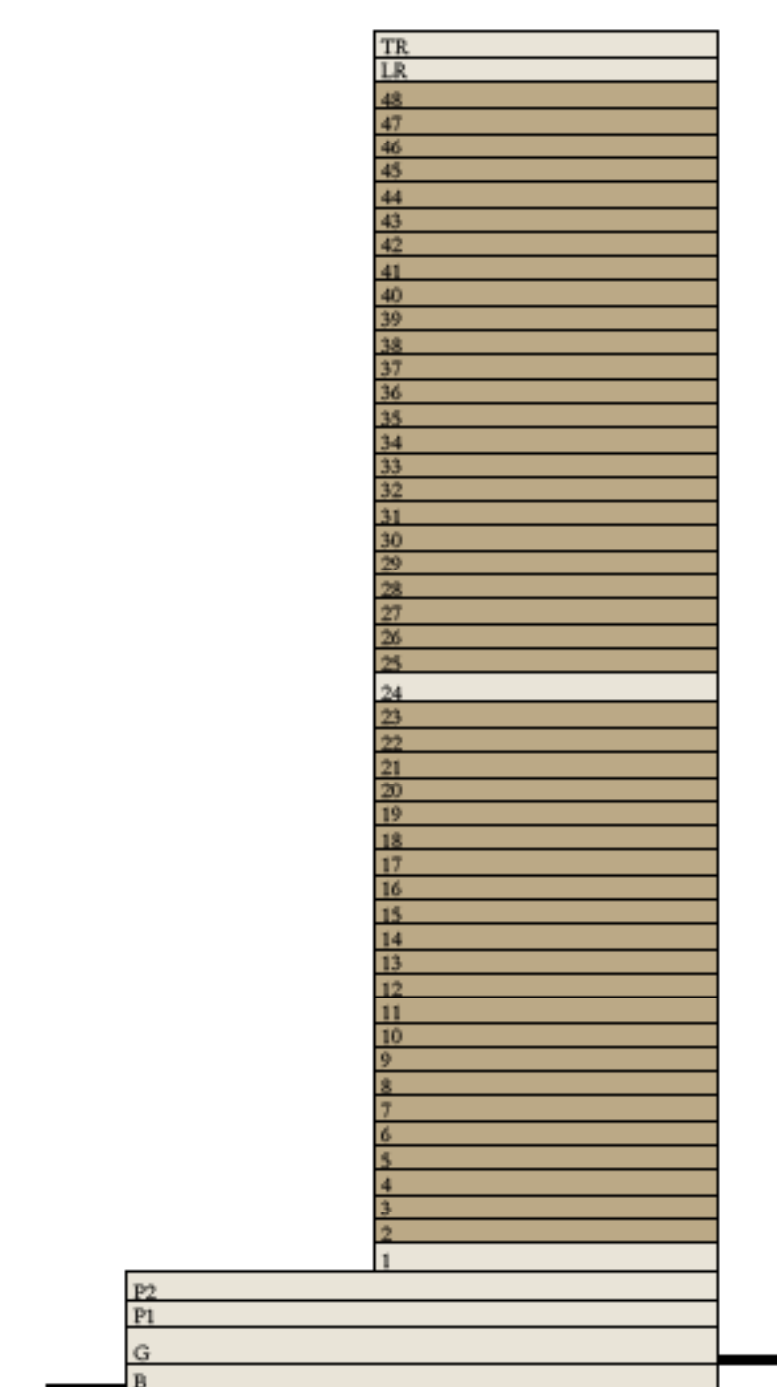
LEVEL 02-23, 25-48 UNIT 05

SUITE AREA	1522.45 SQ.FT.	141.44 SQ.M.
BALCONY AREA	222.60 SQ.FT.	20.68 SQ.M.
TOTAL AREA	1745.05 SQ.FT.	162.12 SQ.M.

KEY PLAN LEVEL
02-23 & 25-48



KEY SECTION



Disclaimer : All dimensions are in imperial and metric, and measured from finish to finish excluding construction tolerances. 2. All materials, dimensions, and drawings are approximate only. 3. Information is subject to change without notice, at developer's absolute discretion. 4. Actual area may vary from the stated area. 5. Drawings not to scale. 6. All images used are for illustrative purposes only and do not represent the actual size, features, specifications, fittings, and furnishings. 7. The developer reserves the right to make revisions / alterations, at it's absolute discretion, without any liability whatsoever.

ARLO

DUBAI CREEK HARBOUR



FLOOR PLAN



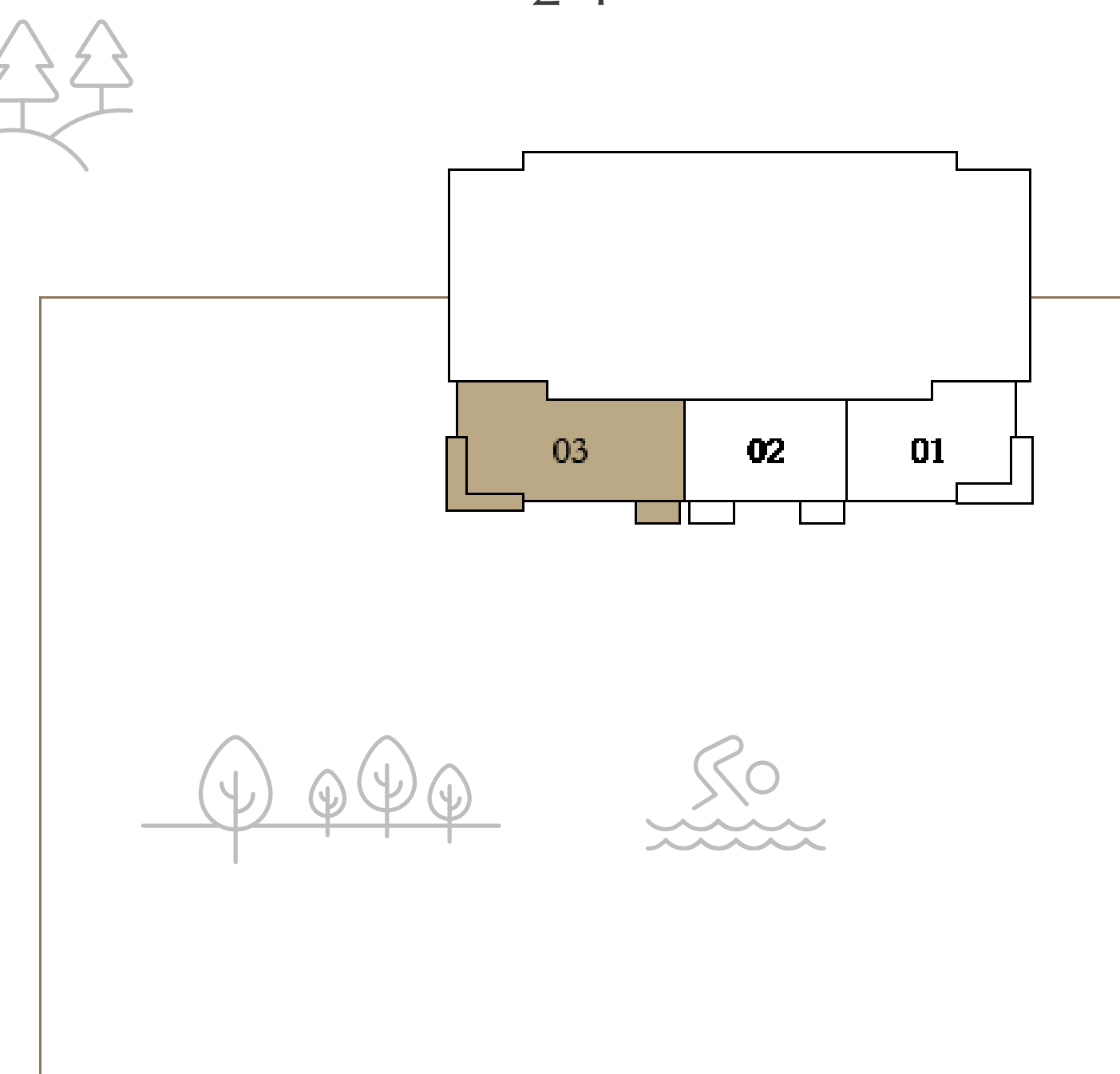
3 BEDROOM

LEVEL 24

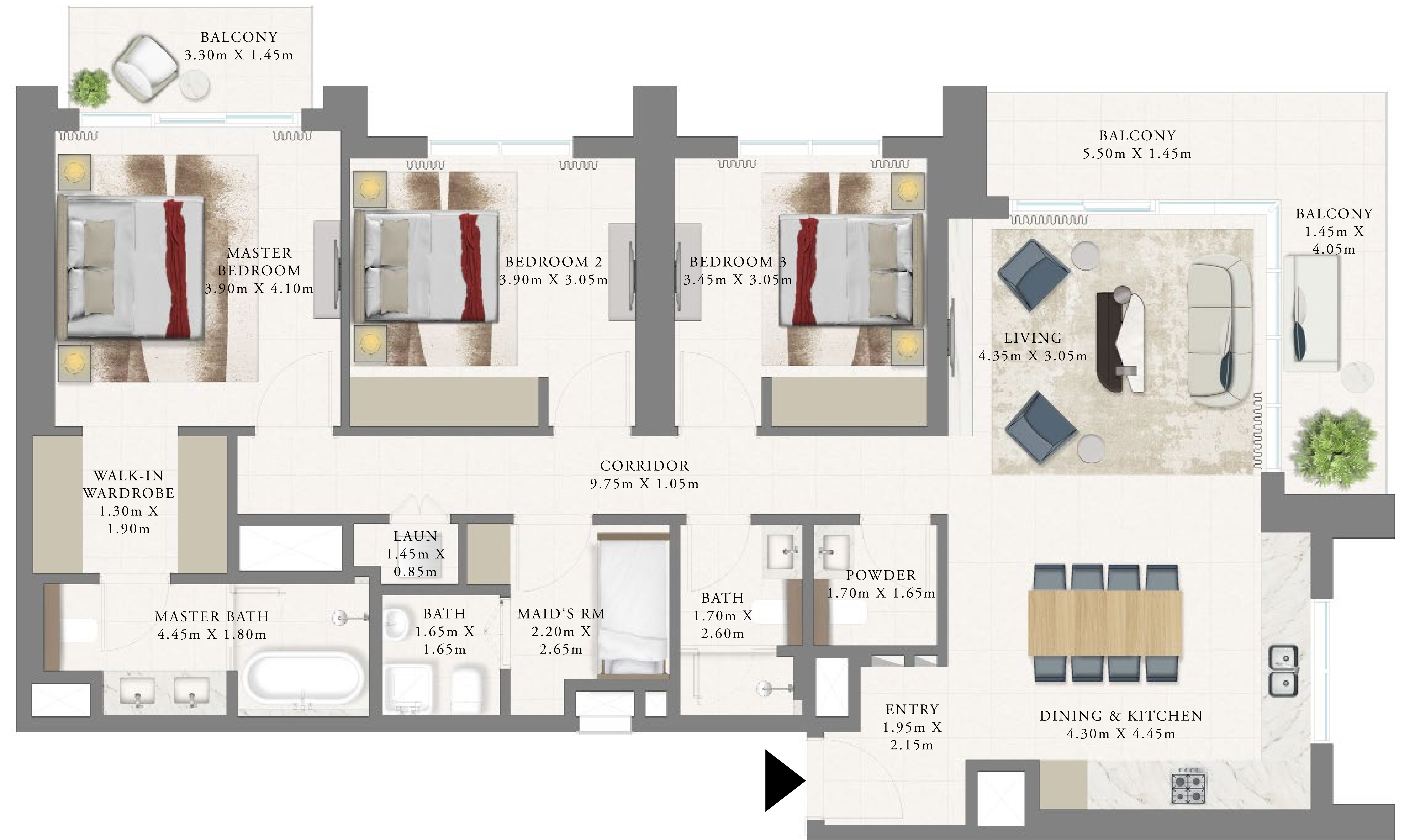
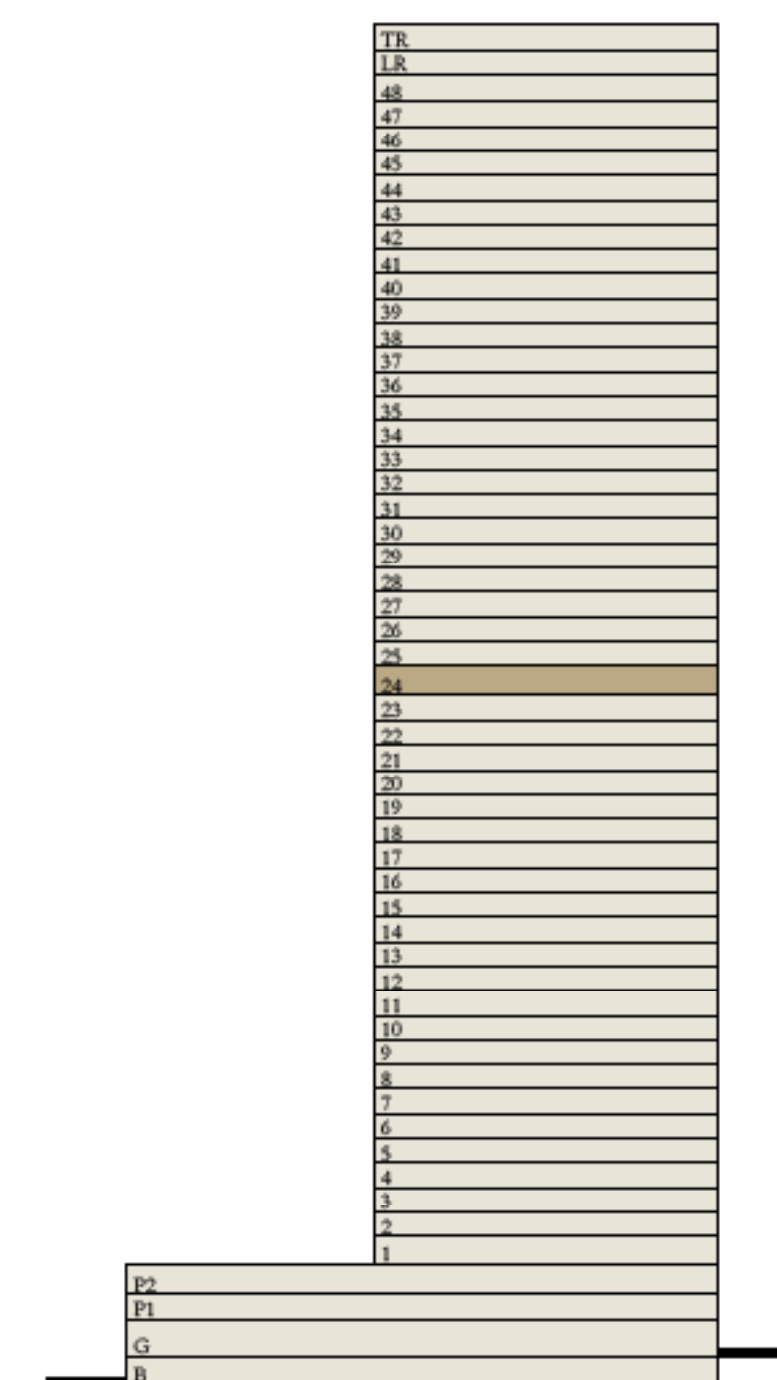
UNIT 03

SUITE AREA	1522.45 SQ.FT.	141.44 SQ.M.
BALCONY AREA	222.60 SQ.FT.	20.68 SQ.M.
TOTAL AREA	1745.05 SQ.FT.	162.12 SQ.M.

KEY PLAN LEVEL 24



KEY SECTION



Disclaimer : All dimensions are in imperial and metric, and measured from finish to finish excluding construction tolerances. 2. All materials, dimensions, and drawings are approximate only. 3. Information is subject to change without notice, at developer's absolute discretion. 4. Actual area may vary from the stated area. 5. Drawings not to scale. 6. All images used are for illustrative purposes only and do not represent the actual size, features, specifications, fittings, and furnishings. 7. The developer reserves the right to make revisions / alterations, at it's absolute discretion, without any liability whatsoever.

ARLO

DUBAI CREEK HARBOUR



FLOOR PLAN

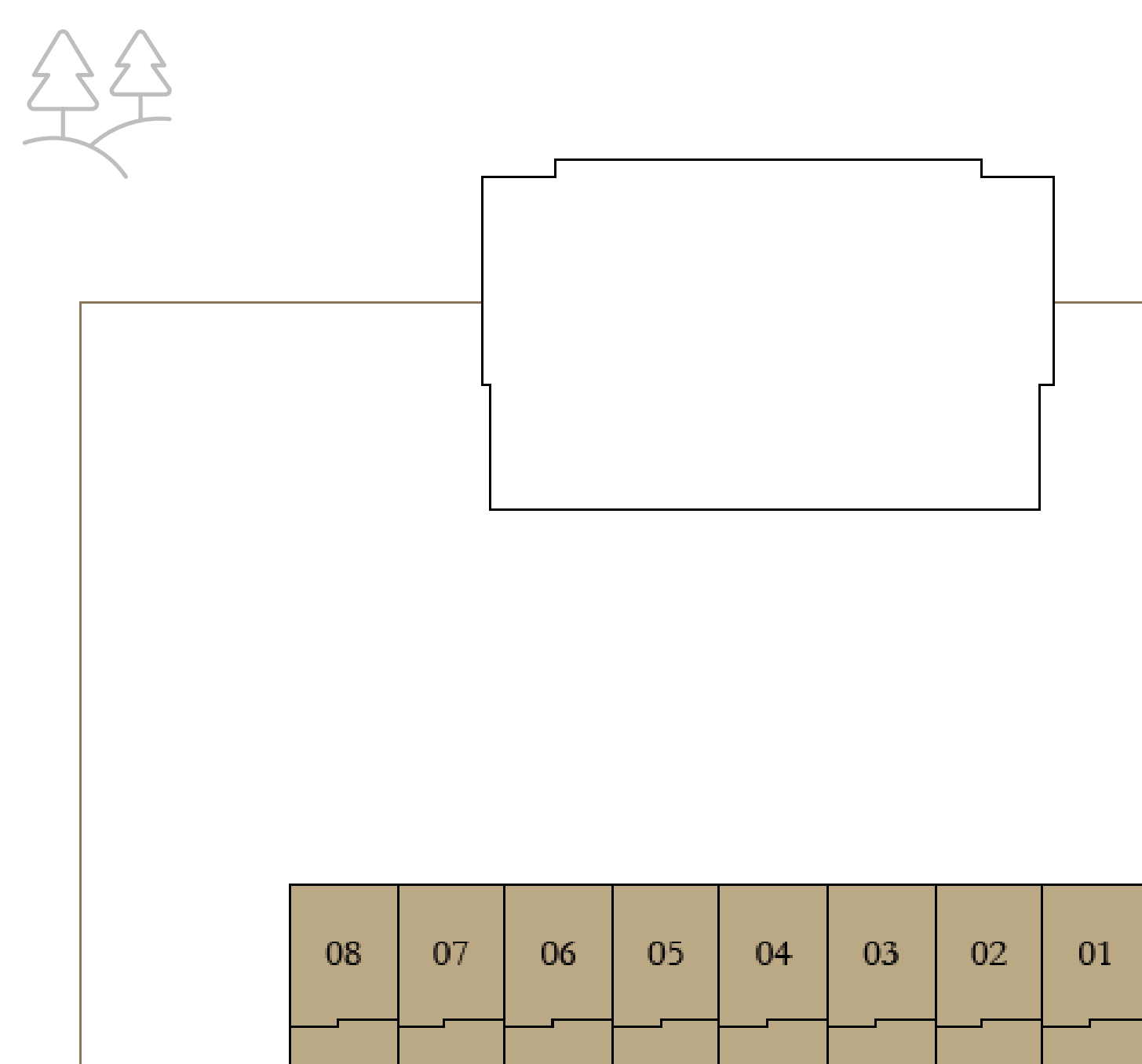


TOWNHOUSE

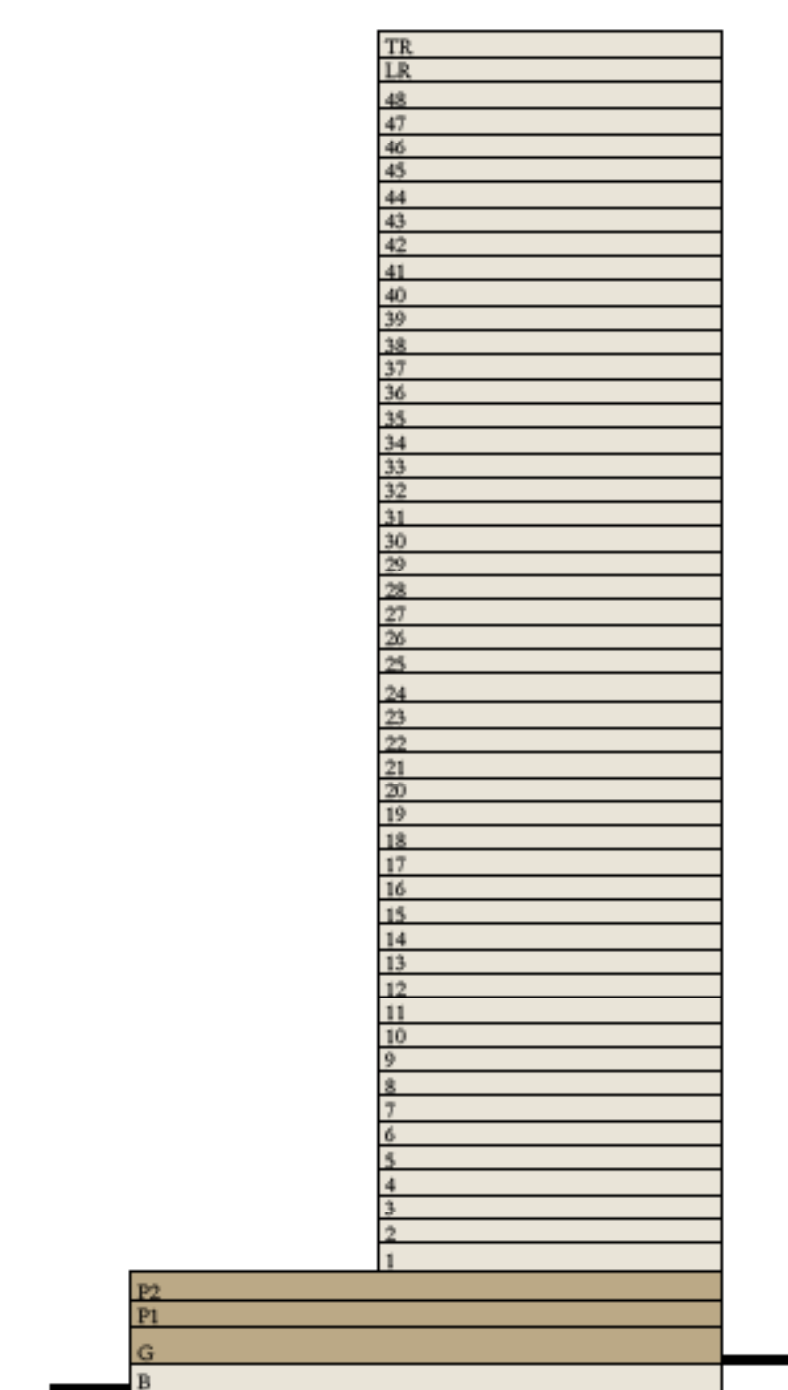
GROUND	UNIT 01	UNIT 02-08
SUITE AREA	2146.65 SQ.FT.	200.41 SQ.M.
BALCONY AREA	1115.90 SQ.FT.	103.91 SQ.M.
TOTAL AREA	3262.55 SQ.FT.	304.32 SQ.M.

GROUND	UNIT 01	UNIT 02-08
SUITE AREA	2157.20 SQ.FT.	200.41 SQ.M.
BALCONY AREA	1118.48 SQ.FT.	103.91 SQ.M.
TOTAL AREA	3275.68 SQ.FT.	304.32 SQ.M.

KEY PLAN LEVEL GROUND



KEY SECTION



LOWER FLOOR



MID FLOOR



UPPER FLOOR

Disclaimer : All dimensions are in imperial and metric, and measured from finish to finish excluding construction tolerances. 2. All materials, dimensions, and drawings are approximate only. 3. Information is subject to change without notice, at developer's absolute discretion. 4. Actual area may vary from the stated area. 5. Drawings not to scale. 6. All images used are for illustrative purposes only and do not represent the actual size, features, specifications, fittings, and furnishings. 7. The developer reserves the right to make revisions / alterations, at its absolute discretion, without any liability whatsoever.





EXCLUSIVELINKS

Real Estate Brokers

sales | leasing | management | off plan

www.exclusive-links.com

Email: Offplan@exclusive-links.com

Telephone No: +971 4 399 4937

Land Department Registration Nos. 708/16892

TRN # 100003976600003

Follow us on:    ELREDubai

 <https://www.instagram.com/exclusivelinks/>

 <https://www.linkedin.com/company/exclusive-links-real-estate-brokers/>