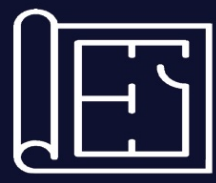


FLOOR PLAN



MOONSTONE
interiors by **MISSONI**



FLOOR PLAN



M O O N S T O N E
interiors by **MISSONI**



PROJECT DETAILS

PROJECT NAME:
MOONSTONE INTERIORS BY MISSONI

PLOT AREA:
127,600 SqFt

DEVELOPER:
DURAR F5 FZ LLC

ARCHITECT:
QHC Architects & Engineers

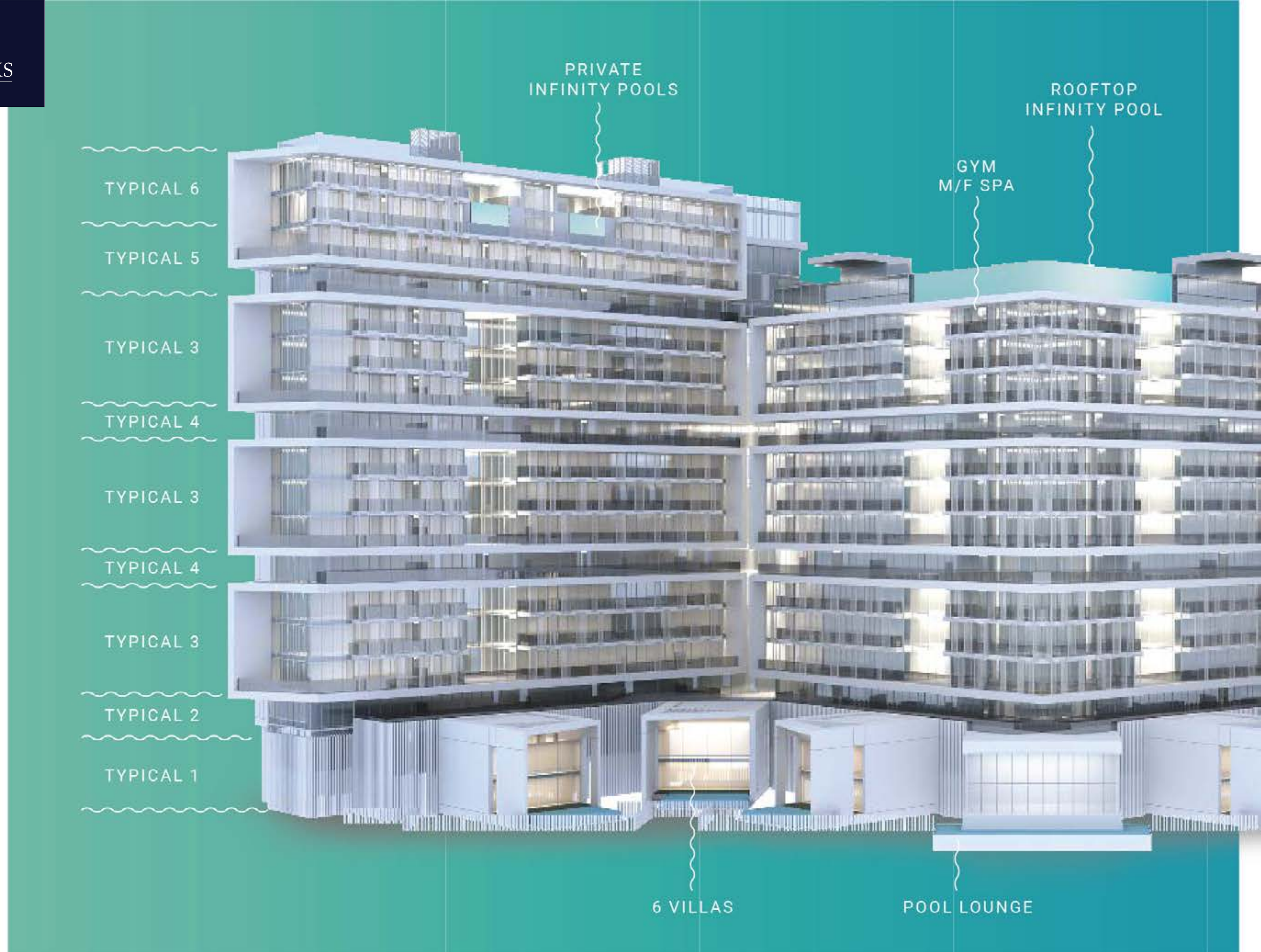
ESTIMATED SERVICE FEES
18 AED/Sqft

ANTICIPATION COMPLETION DATE
November 2026

ELEVATORS		PARKING
Residential	12	1 lot for each Studio, 1&2 BR
Service	6	2 lots for 3 & 4 BRs

UNIT MIX

# of BR	Count	Total Areas in SqFt	
		Min.	Max.
Chalet	38	345	463
1 BR	60	800	918
2 BR	80	1287	1595
2 BR - Plus	6	1722	
3 BR	20	1779	2020
3 BR - Plus	9	2865	
5 BR	4	5367	5636
Villa	6	4122	5651
Retail	3	453	475
Total	226		





FLOOR PLAN






FLOOR PLANS

DISCLAIMER:
All images used are for illustrative purposes only and do not represent the actual size, features, specifications, fittings, and furnishings. The developer reserves the right to make revisions / alterations, at its absolute discretion, without any liability whatsoever.



TYPICAL 1

Floor No.  Ground floor

 Villa  6 units

-  1 Grand Drop-off
-  2 East lobby
-  3 West lobby
-  4 Visitor Parking
-  5 Pool resident lounge
-  6 Central Courtyard Garden
-  7 Mini nursery room
-  8 Padel court
-  9 Wet sunbathing deck
-  10 Retail shops



DISCLAIMER:
All images used are for illustrative purposes only and do not represent the actual size, features, specifications, fittings, and furnishings. The developer reserves the right to make revisions / alterations, at its absolute discretion, without any liability whatsoever.



TYPICAL 2

Floor No.	1 st Floor
➤ Chalet	38 units
➤ Chalet plus	4 units
<hr/> Total	<hr/> 42 units



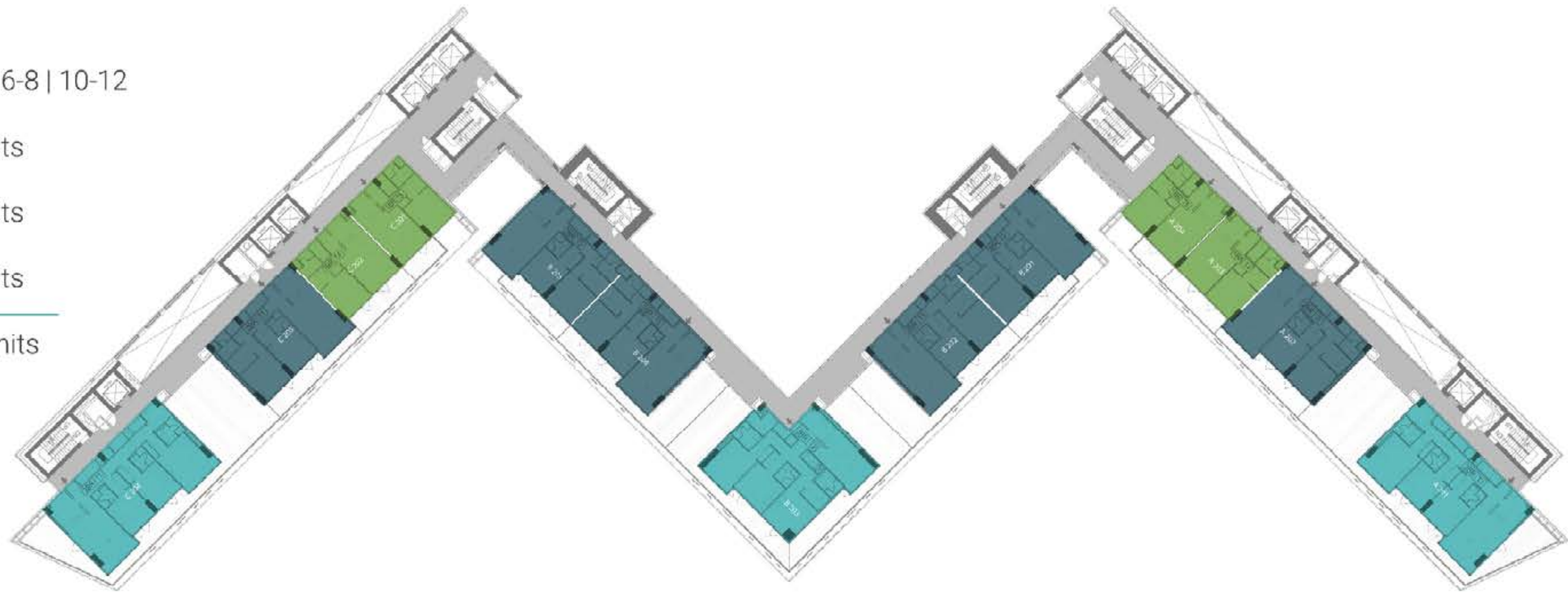
SEA-VIEW

DISCLAIMER:
All images used are for illustrative purposes only and do not represent the actual size, features, specifications, fittings, and furnishings. The developer reserves the right to make revisions / alterations, at its absolute discretion, without any liability whatsoever.



TYPICAL 3

Floor range	2-4 6-8 10-12
➤ 1 BR	4 units
➤ 2 BR	6 units
➤ 3 BR	3 units
Total	13 units



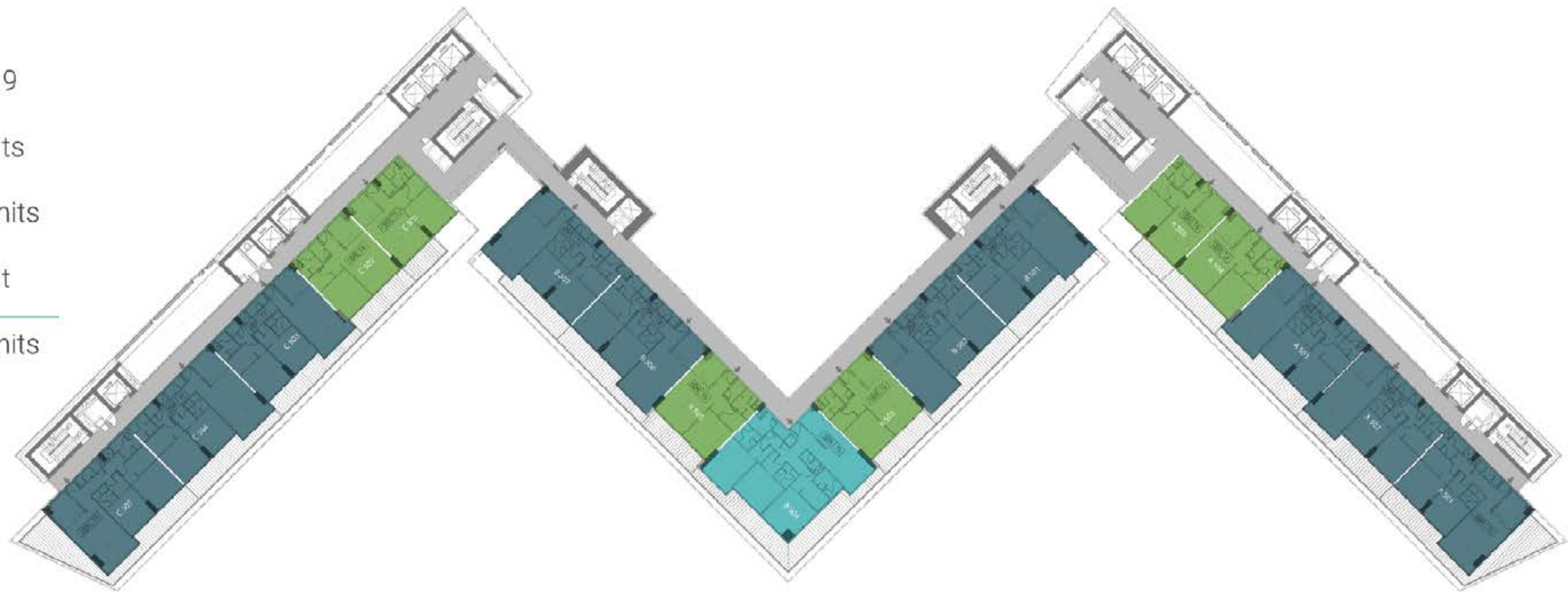
SEA-VIEW

DISCLAIMER:
All images used are for illustrative purposes only and do not represent the actual size, features, specifications, fittings, and furnishings. The developer reserves the right to make revisions / alterations, at its absolute discretion, without any liability whatsoever.



TYPICAL 4

Floor range	5 & 9
> 1 BR	6 units
> 2 BR	10 units
> 3 BR	1 unit
<hr/> Total	<hr/> 17 units



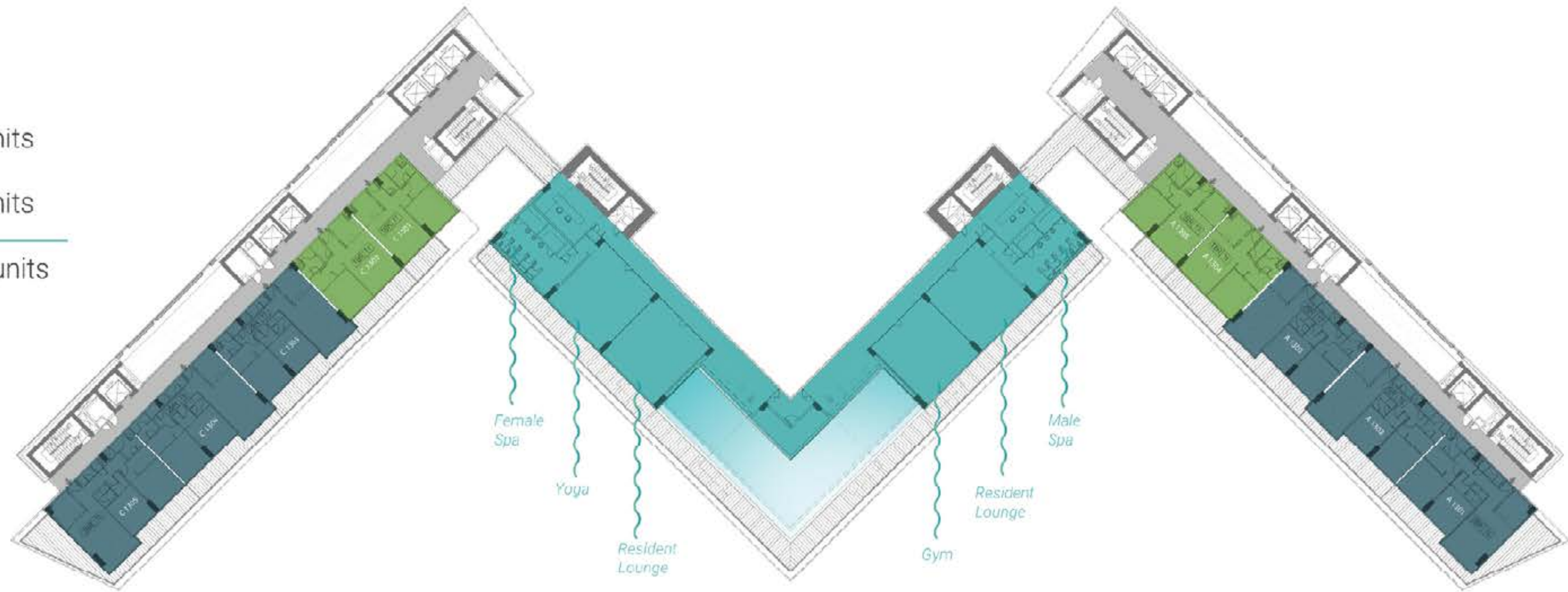
SEA-VIEW

DISCLAIMER:
All images used are for illustrative purposes only and do not represent the actual size, features, specifications, fittings, and furnishings. The developer reserves the right to make revisions / alterations, at its absolute discretion, without any liability whatsoever.



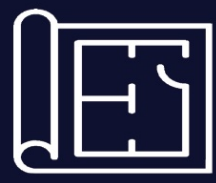
TYPICAL 5 INDOOR AMENITIES

Floor No.	13
➤ 1 BR	4 units
➤ 2 BR	6 units
Total	10 units



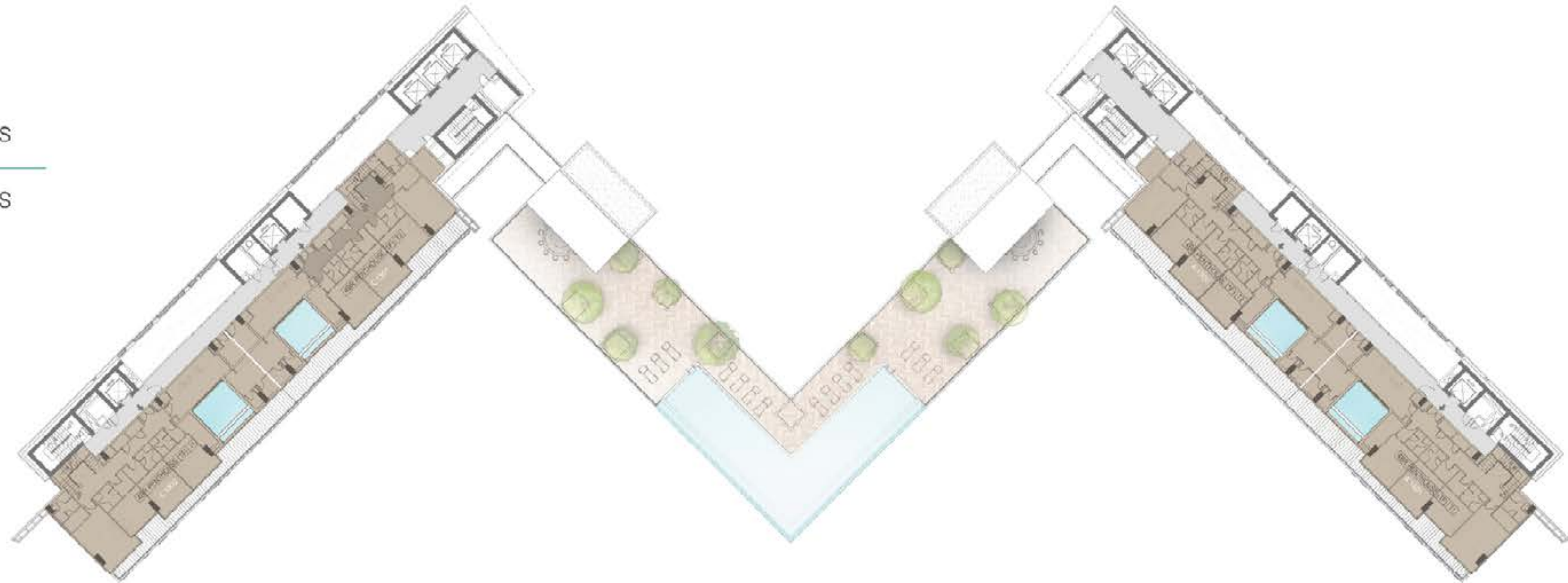
SEA-VIEW

DISCLAIMER:
All images used are for illustrative purposes only and do not represent the actual size, features, specifications, fittings, and furnishings. The developer reserves the right to make revisions / alterations, at its absolute discretion, without any liability whatsoever.



TYPICAL 6 LOWER LEVEL

Floor No.	15
➤ 5 BR - duplex	4 units
Total	4 units



SEA-VIEW

DISCLAIMER:
All images used are for illustrative purposes only and do not represent the actual size, features, specifications, fittings, and furnishings. The developer reserves the right to make revisions / alterations, at its absolute discretion, without any liability whatsoever.

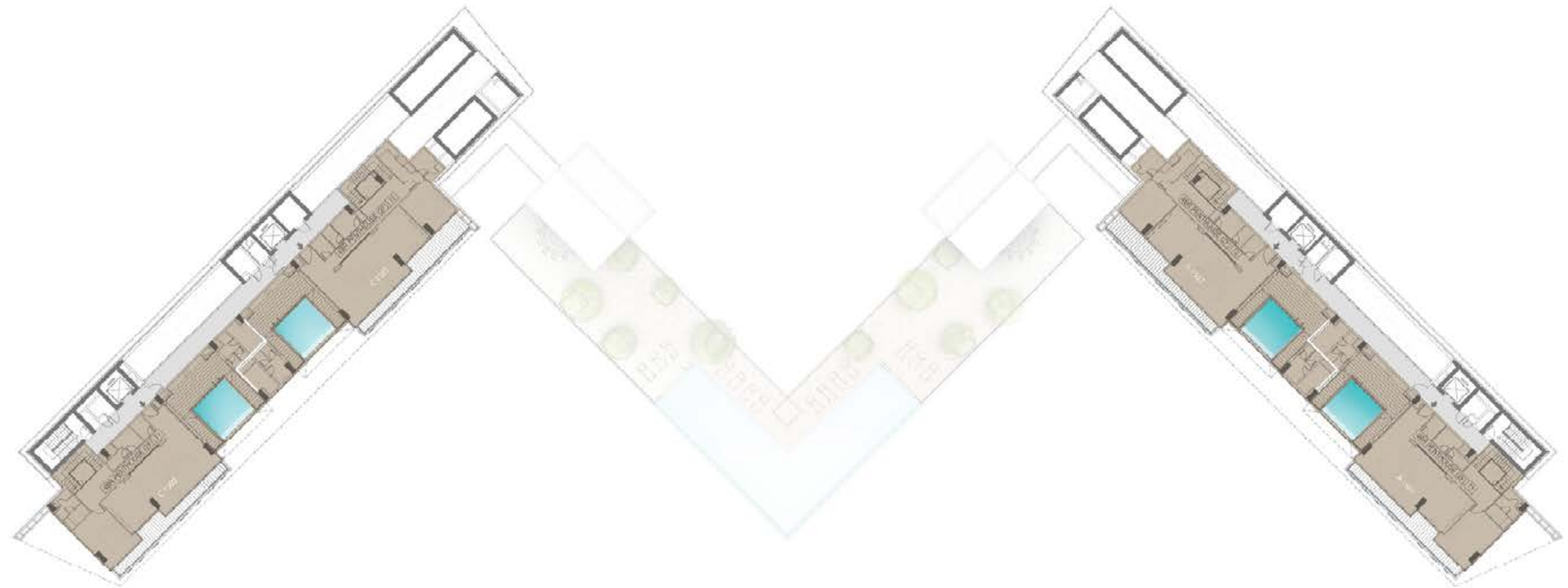


FLOOR PLAN



TYPICAL FLOOR PLANS 16th FLOOR

TYPICAL 6 UPPER LEVEL



SEA-VIEW

DISCLAIMER:
All images used are for illustrative purposes only and do not represent the actual size, features, specifications, fittings, and furnishings. The developer reserves the right to make revisions / alterations, at its absolute discretion, without any liability whatsoever.



CHALET

Suite area	360 Sqft
Balcony area	147 Sqft
<hr/> Total area	<hr/> 507 Sqft



- 1 Living area 4.7m X 3.8m
- 2 Kitchen 3.6m X 1.9m
- 3 Bathroom 2.1m X 1.8m
- 4 Balcony 3.5m X 3.9m

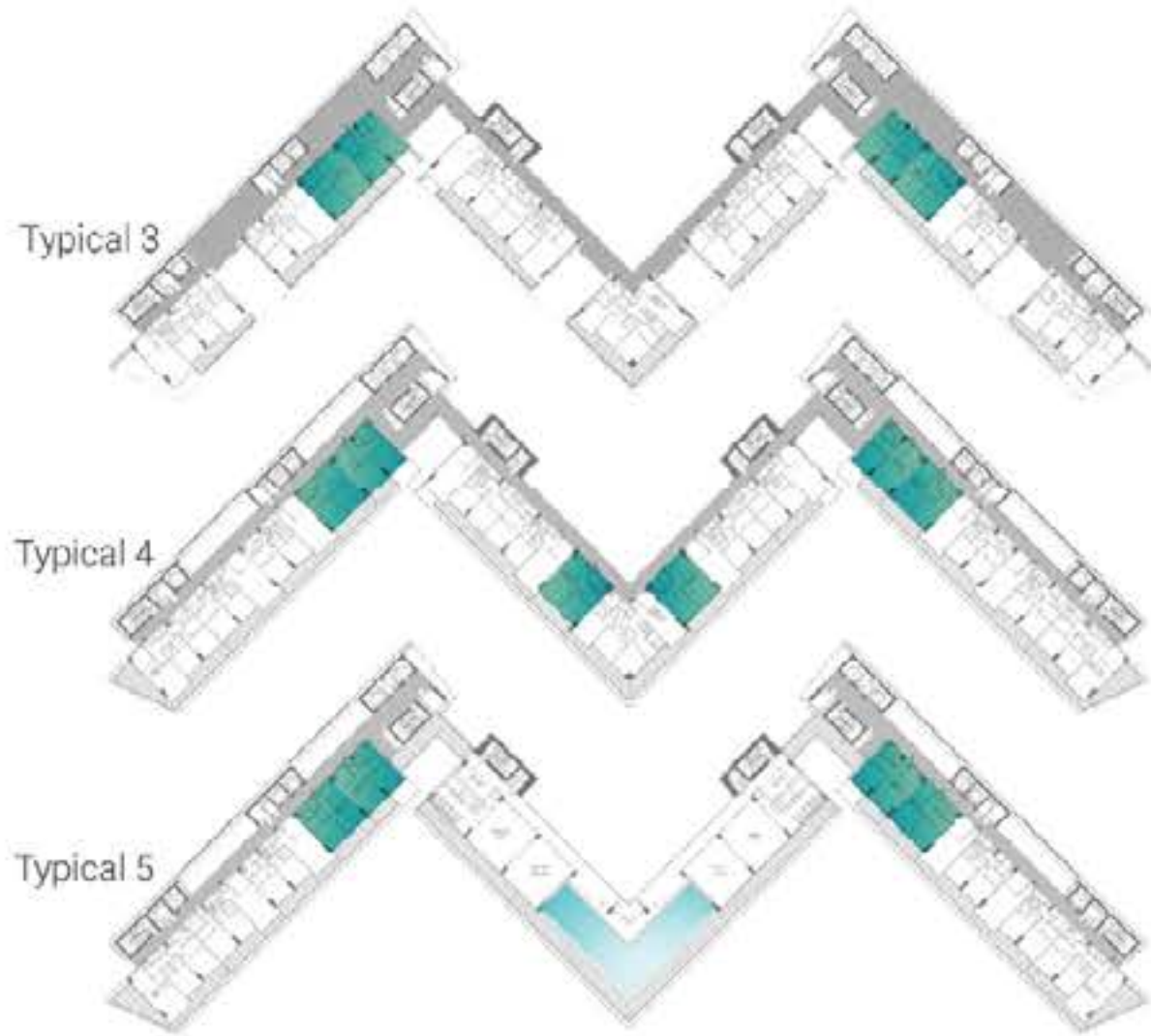
SEA VIEW





1 BEDROOM

	MIN Sqft	MAX Sqft
Suite area	702	711
Balcony area	98	207
Total area	800	918



SEA VIEW

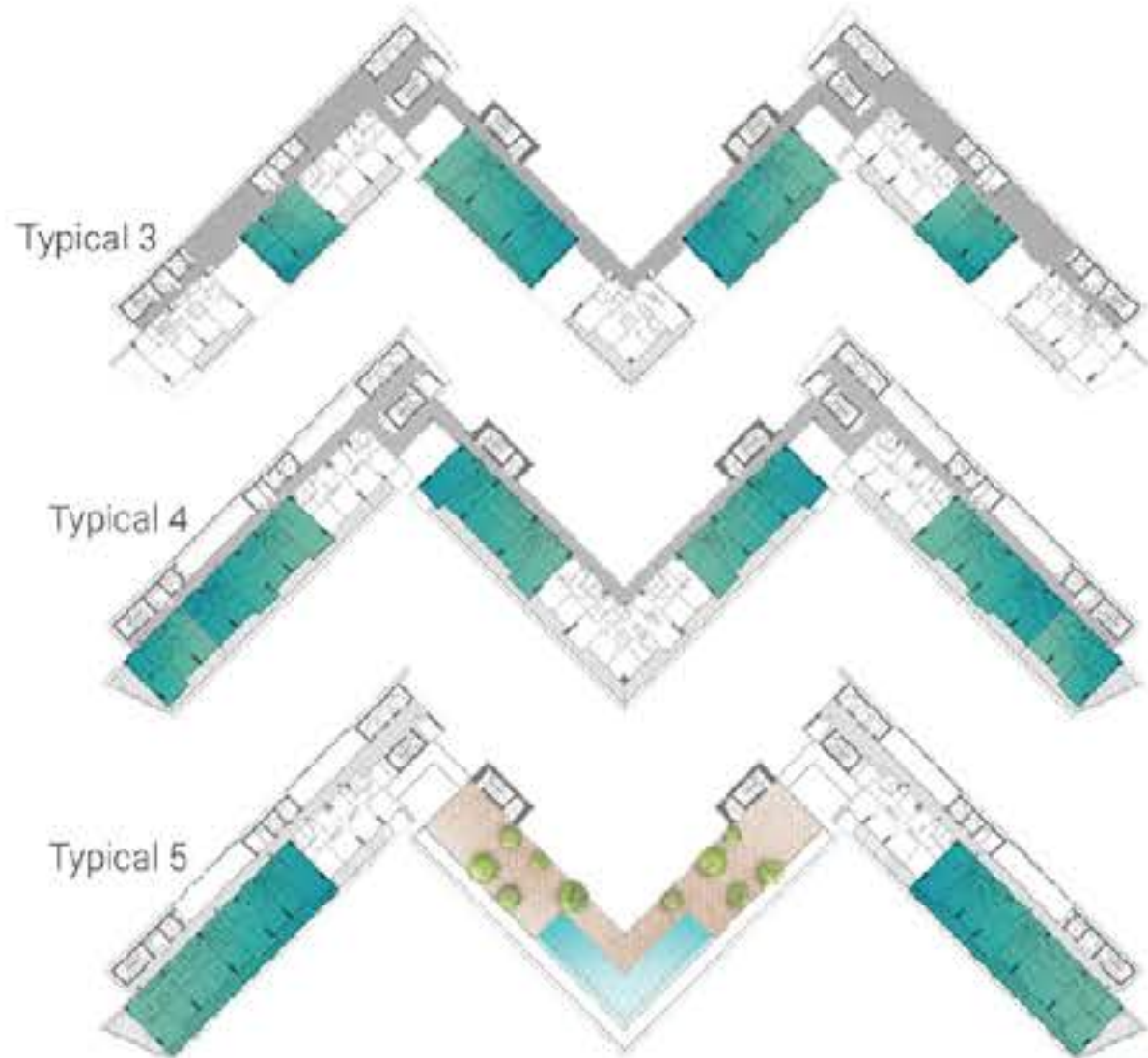
- 1 Living area 6.3m X 4.4m
- 2 Kitchen 3m X 3m
- 3 Bedroom 4.1m X 3.5m
- 4 Bathroom 2.3m X 2.3m
- 5 Balcony 3.3m X 2.1m

DISCLAIMER:
All images used are for illustrative purposes only and do not represent the actual size, features, specifications, fittings, and furnishings. The developer reserves the right to make revisions / alterations, at its absolute discretion, without any liability whatsoever.



2 BEDROOMS

	MIN Sqft	MAX Sqft
Suite area	1111	1132
Balcony area	176	463
Total area	1287	1595



SEA VIEW

- 1 Living area 6.2m X 4.3m
- 2 Kitchen 3.2m X 2.7m
- 3 Bedroom 3.9m X 3.6m
- 4 M.Bedroom 6m X 3.9m
- 5 M.Bathroom 2.1m X 2.3m
- 6 Balcony 12m X 2.1m

DISCLAIMER:
All images used are for illustrative purposes only and do not represent the actual size, features, specifications, fittings, and furnishings. The developer reserves the right to make revisions / alterations, at its absolute discretion, without any liability whatsoever.



2 BEDROOMS PLUS

Suite area	1145
Balcony area	577
<hr/>	<hr/>
Total area	1722

Typical 3



1 Living area	6.1m X 4.2m
2 Kitchen	3.2m X 2.7m
3 Bedroom	3.8m X 3.6m
4 M.Bedroom	5.9m X 3.9m
5 M.Bathroom	2.3m X 2.3m
6 Balcony	16m X 9.4m

SEA VIEW

DISCLAIMER:
All images used are for illustrative purposes only and do not represent the actual size, features, specifications, fittings, and furnishings. The developer reserves the right to make revisions / alterations, at its absolute discretion, without any liability whatsoever.

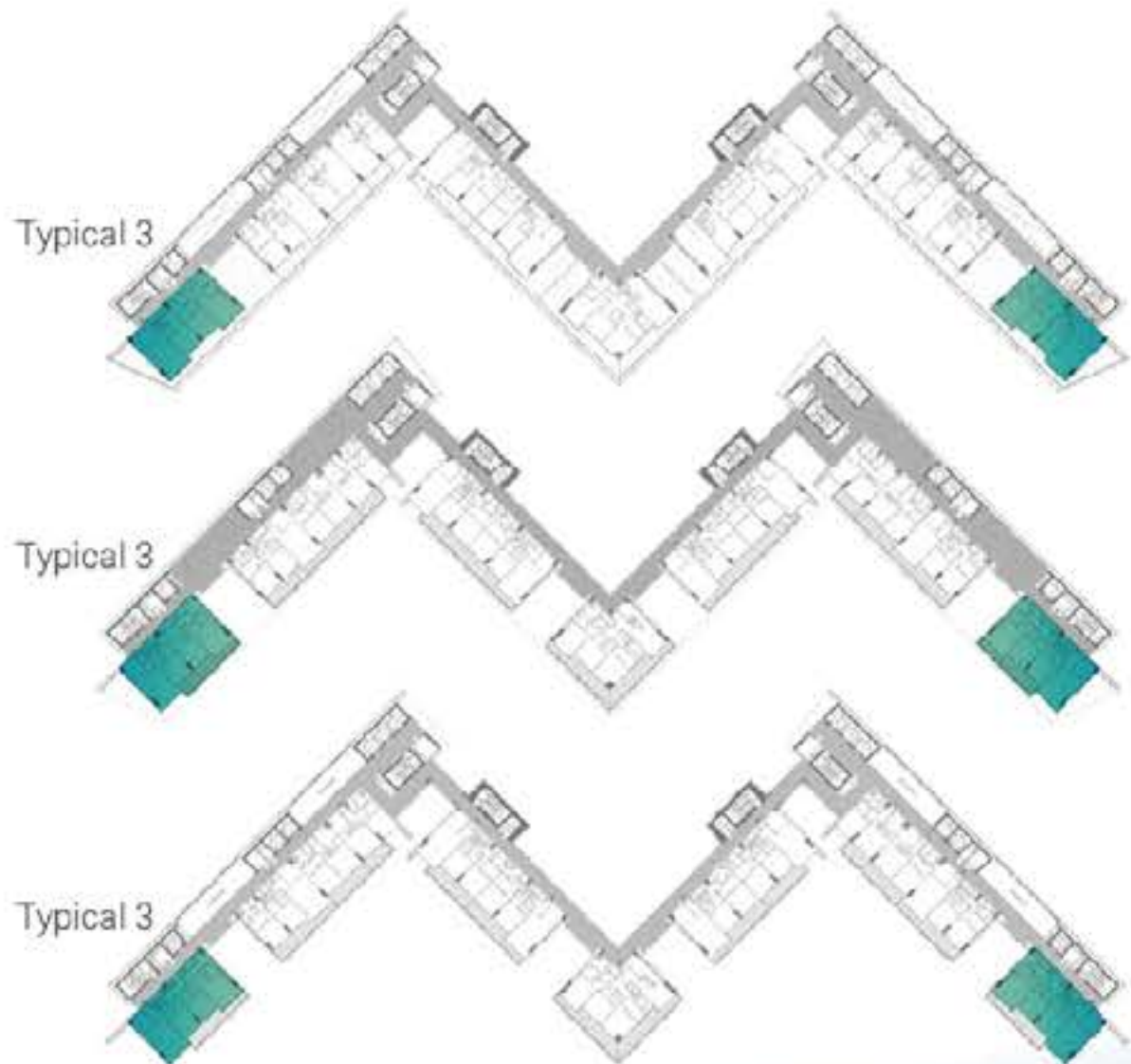


3 BEDROOMS

	MIN Sqft	MAX Sqft
Suite area	1576	1535
Balcony area	204	485
Total area	1779	2020



- 1 Living area 6.1m X 4.4m
- 2 Kitchen 3.4m X 2.9m
- 3 Bedroom1 3.6m X 3.9m
- 4 Bedroom2 3.6m X 3.9m
- 5 M.Bedroom 4.9m X 4.6m
- 6 M.Bathroom 2.5m X 2m
- 7 Balcony 11m X 2.2m



SEA VIEW

DISCLAIMER:
All images used are for illustrative purposes only and do not represent the actual size, features, specifications, fittings, and furnishings. The developer reserves the right to make revisions / alterations, at its absolute discretion, without any liability whatsoever.

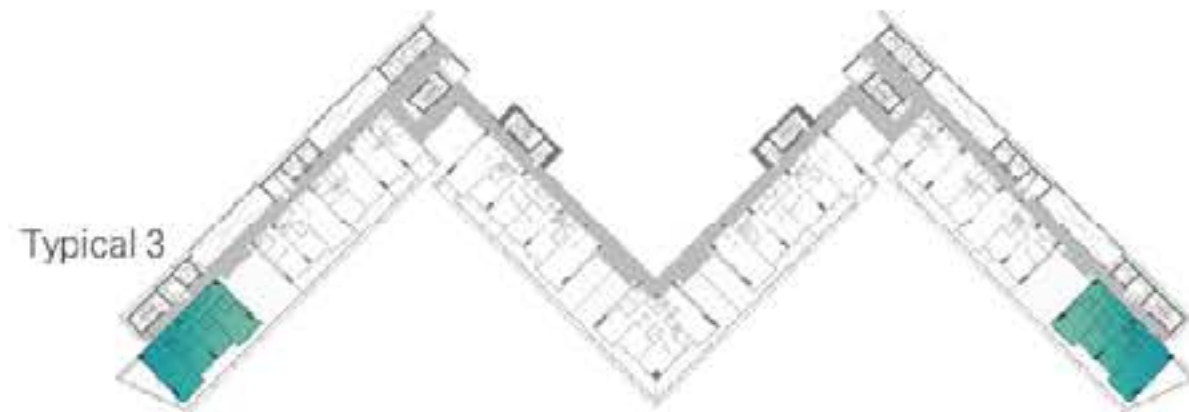


3 BEDROOMS PLUS

Suite area	1576
Balcony area	1290
<hr/> Total area	<hr/> 2865



1 Living area	5.9m X 4.4m
2 Kitchen	3.4m X 2.8m
3 Bedroom1	5.9m X 3.6m
4 Bedroom2	5.9m X 3.6m
5 M.Bedroom	4.8m X 4.5m
6 M.Bathroom	2.5m X 2m
7 Balcony	24m X 9.8m



SEA VIEW

DISCLAIMER:
All images used are for illustrative purposes only and do not represent the actual size, features, specifications, fittings, and furnishings. The developer reserves the right to make revisions / alterations, at its absolute discretion, without any liability whatsoever.



4 BEDROOMS - VILLA LOWER LEVEL

	MIN Sqft	MAX Sqft
Plot area	3158	4482
Total area	4122	5651



- 1 Living area 7.5m X 6.4m
- 2 Bedroom1 5.9m X 4m
- 3 Bathroom 1.6m X 1.5m
- 4 Deck 7.6m X 2.8m
- 5 Pool 5.7m X 4.1m

SEA VIEW

DISCLAIMER:
All images used are for illustrative purposes only and do not represent the actual size, features, specifications, fittings, and furnishings. The developer reserves the right to make revisions / alterations, at its absolute discretion, without any liability whatsoever.



4 BEDROOMS - VILLA UPPER LEVEL

Typical 1



- 1 Bedroom 2 6.4m X 3.5m
- 2 Bedroom 3 4.4m X 3.6m
- 3 M.Bedroom 7.7m X 3.9m
- 4 M.Bathroom 2.2m X 2m

SEA VIEW

DISCLAIMER:
All images used are for illustrative purposes only and do not represent the actual size, features, specifications, fittings, and furnishings. The developer reserves the right to make revisions / alterations, at its absolute discretion, without any liability whatsoever.

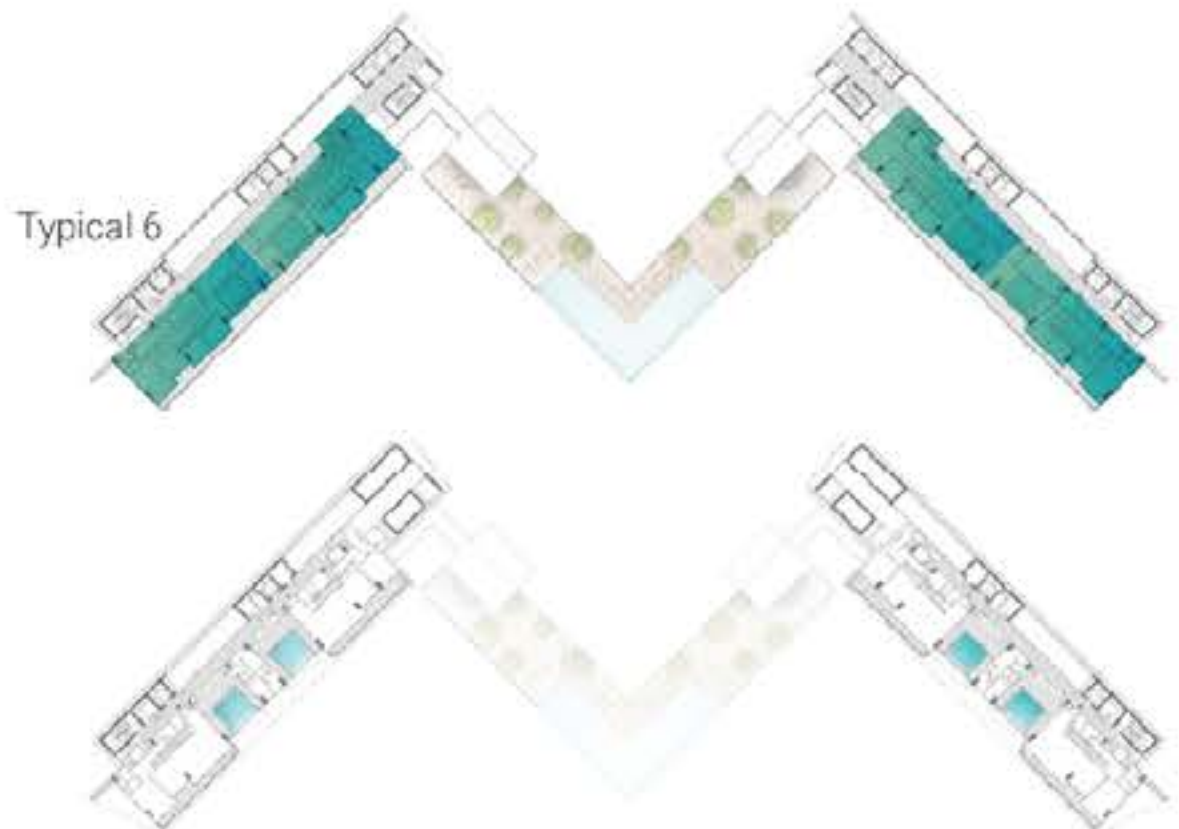


5 BEDROOMS PENTHOUSE-DUPLEX
LOWER LEVEL

	MIN Sqft	MAX Sqft
Suite area	4097	4253
Balcony area	1272	1383
Total area	5368	5636



- 1 Living area 7.7m X 5.7m
- 2 Kitchen 4.6m X 4.2m
- 3 Washroom 2.2m X 1.6m
- 4 Bedroom1 7.2m X 4.1m
- 5 Balcony 16m X 1.2
- 6 Pool area 7.6m X 8.1m

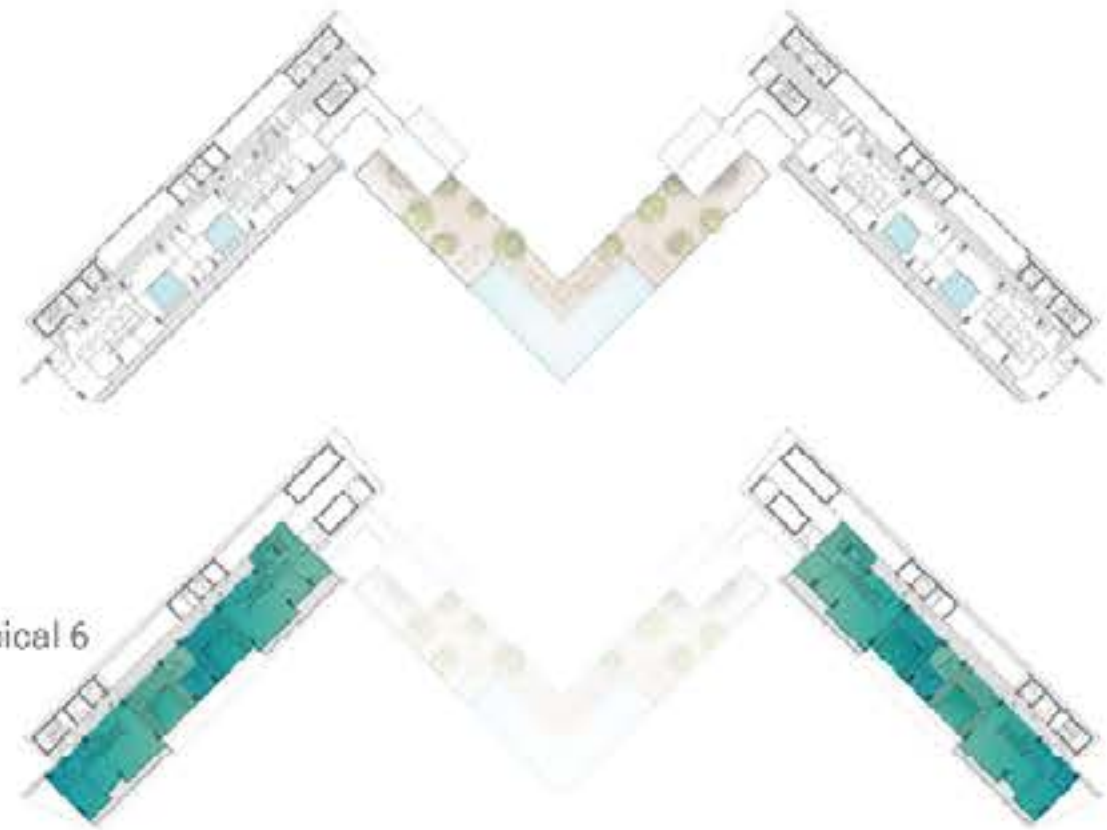


SEA VIEW

DISCLAIMER:
All images used are for illustrative purposes only and do not represent the actual size, features, specifications, fittings, and furnishings. The developer reserves the right to make revisions / alterations, at its absolute discretion, without any liability whatsoever.



5 BEDROOMS PENTHOUSE-DUPLEX
UPPER LEVEL



Typical 6



- 1 Bedroom2 4.6m X 4m
- 2 Bedroom3 4.6m X 3.7m
- 3 Bedroom 4 4.1m X 3.6m
- 4 M.Bedroom 7.1m X 4m
- 5 M.Bathroom 2.6m X 2.2m
- 6 Gym 7.9m X 3.2m
- 7 Balcony 26m X 2m

SEA VIEW

DISCLAIMER:
All images used are for illustrative purposes only and do not represent the actual size, features, specifications, fittings, and furnishings. The developer reserves the right to make revisions / alterations, at its absolute discretion, without any liability whatsoever.



FLOOR PLAN



MOONSTONE
interiors by **MISSONI**

Fortune5
DEVELOPMENTS

OCTA
DEVELOP


DURAR
GROUP