



# FLOOR PLAN



SO'UPTOWN DUBAI  
RESIDENCES  
DMCC

SO'UPTOWN DUBAI  
RESIDENCES

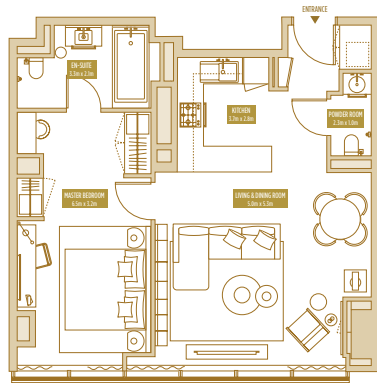
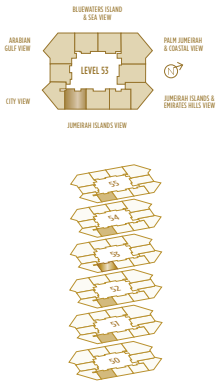
## TYPE 1 BR-1 1 BED APARTMENT

TOTAL AREA  
72.17-75.63 SQ.M. / 776.84-814.08 SQ.FT.

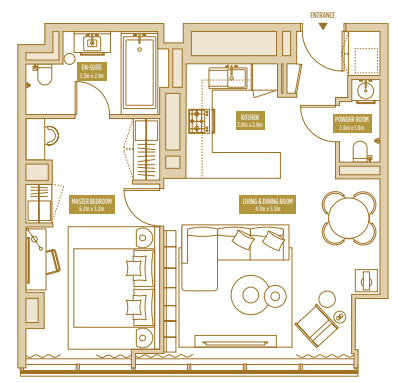
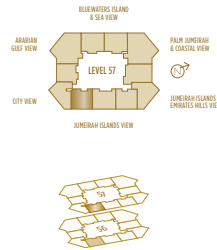
SO'UPTOWN DUBAI  
RESIDENCES

## TYPE 1 BR-1' 1 BED APARTMENT

TOTAL AREA  
70.77-71.47 SQ.M. / 761.77-769.30 SQ.FT.



UNIT 5309 TOTAL AREA 73.55 SQ.M. / 791.69 SQ.FT.



UNIT 5709 TOTAL AREA 70.77 SQ.M. / 761.77 SQ.FT.

Disclaimer: Please note this floor plan is for marketing purposes and is to be used as a guide only. All efforts have been made to ensure its accuracy however changes may be made during the development process and dimensions, fixtures, fittings, finishes and specifications are subject to change without notice. Dimensions may vary.

Disclaimer: Please note this floor plan is for marketing purposes and is to be used as a guide only. All efforts have been made to ensure its accuracy however changes may be made during the development process and dimensions, fixtures, fittings, finishes and specifications are subject to change without notice. Dimensions may vary.



# FLOOR PLAN



**EXCLUSIVELINKS**  
Real Estate Brokers

SO'UPTOWN DUBAI  
RESIDENCES  
**DMCC**

SO'UPTOWN DUBAI  
RESIDENCES

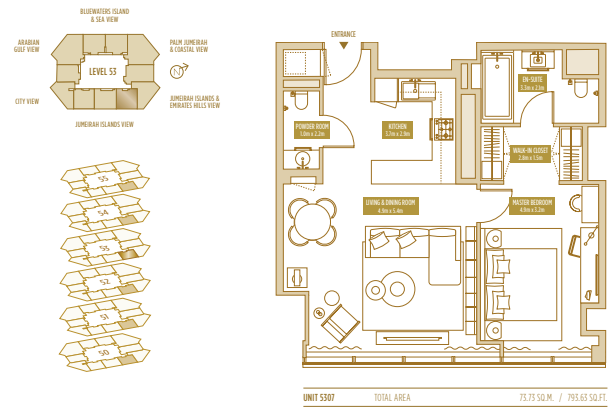
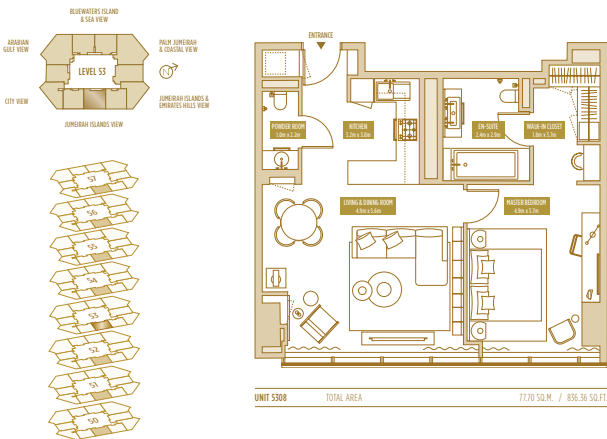
## TYPE 1 BR-1A 1 BED APARTMENT

TOTAL AREA  
74.72-79.95 SQ.M. / 804.29-860.57 SQ.FT.

SO'UPTOWN DUBAI  
RESIDENCES

## TYPE 1 BR-1B 1 BED APARTMENT

TOTAL AREA  
72.05-75.81 SQ.M. / 775.55-816.02 SQ.FT.



Disclaimer: Please note this floor plan is for marketing purposes and is to be used as a guide only. All efforts have been made to ensure its accuracy however changes may be made during the development process and dimensions, fixtures, fittings, finishes and specifications are subject to change without notice. Dimensions may vary.

Disclaimer: Please note this floor plan is for marketing purposes and is to be used as a guide only. All efforts have been made to ensure its accuracy however changes may be made during the development process and dimensions, fixtures, fittings, finishes and specifications are subject to change without notice. Dimensions may vary.



# FLOOR PLAN



SO'UPTOWN DUBAI  
RESIDENCES  
DMCC

SO'UPTOWN DUBAI  
RESIDENCES

## TYPE 1 BR-1B' 1 BED APARTMENT

TOTAL AREA

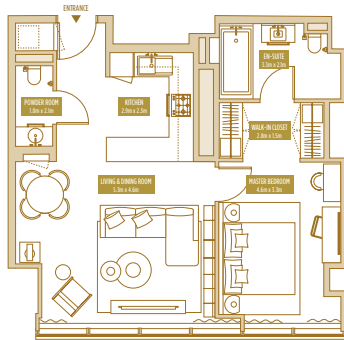
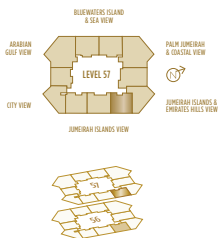
70.66-71.36 SQ.M. / 760.58-768.12 SQ.FT.

SO'UPTOWN DUBAI  
RESIDENCES

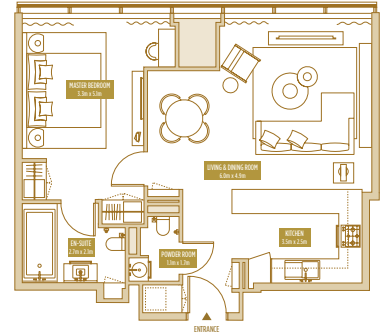
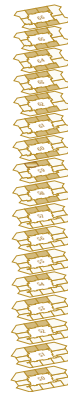
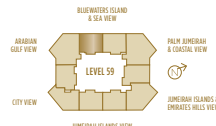
## TYPE 1 BR-2 1 BED APARTMENT

TOTAL AREA

68.39-80.59 SQ.M. / 736.15-865.21 SQ.FT.



UNIT 5107 TOTAL AREA 70.66 SQ.M. / 760.58 SQ.FT.



UNIT 5902 TOTAL AREA 73.63 SQ.M. / 792.55 SQ.FT.

Disclaimer: Please note this floor plan is for marketing purposes and is to be used as a guide only. All efforts have been made to ensure its accuracy however changes may be made during the development process and dimensions, fixtures, fittings, finishes and specifications are subject to change without notice. Dimensions may vary.

Disclaimer: Please note this floor plan is for marketing purposes and is to be used as a guide only. All efforts have been made to ensure its accuracy however changes may be made during the development process and dimensions, fixtures, fittings, finishes and specifications are subject to change without notice. Dimensions may vary.



# FLOOR PLAN



SO'UPTOWN DUBAI  
RESIDENCES  
DMCC

SO'UPTOWN DUBAI  
RESIDENCES

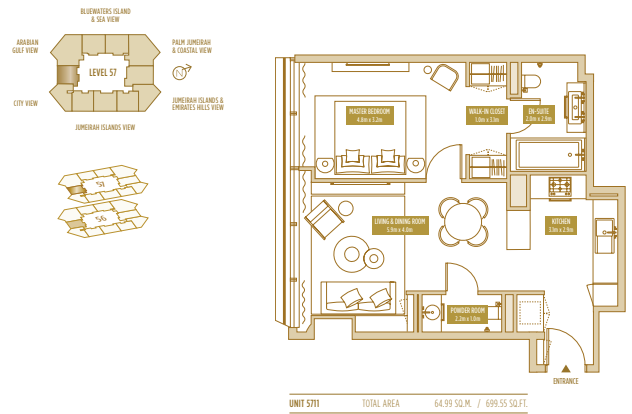
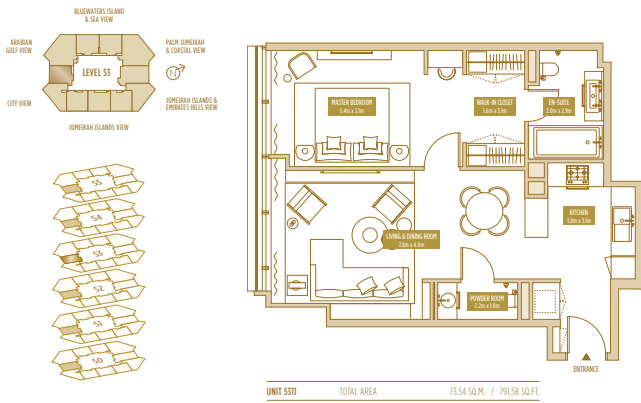
## TYPE 1 BR-3 1 BED APARTMENT

TOTAL AREA  
69.41-79.65 SQ.M. / 74713-857.35 SQ.FT.

SO'UPTOWN DUBAI  
RESIDENCES

## TYPE 1 BR-3A 1 BED APARTMENT

TOTAL AREA  
64.99-67.21 SQ.M. / 699.55-723.45 SQ.FT.



Disclaimer: Please note this floor plan is for marketing purposes and is to be used as a guide only. All efforts have been made to ensure its accuracy however changes may be made during the development process and dimensions, fixtures, fittings, finishes and specifications are subject to change without notice. Dimensions may vary.

Disclaimer: Please note this floor plan is for marketing purposes and is to be used as a guide only. All efforts have been made to ensure its accuracy however changes may be made during the development process and dimensions, fixtures, fittings, finishes and specifications are subject to change without notice. Dimensions may vary.



# FLOOR PLAN

SO'UPTOWN DUBAI  
RESIDENCES

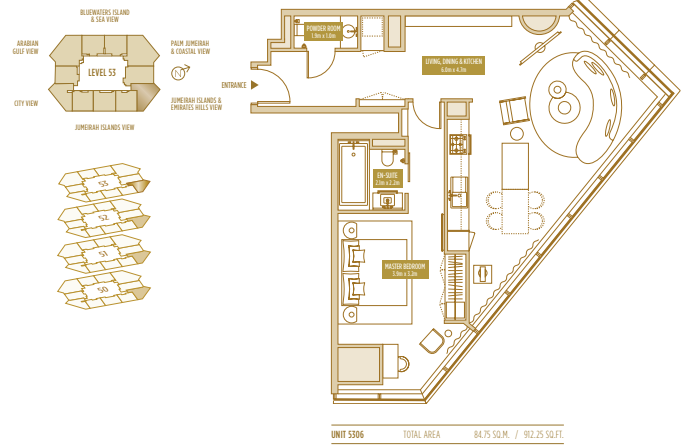
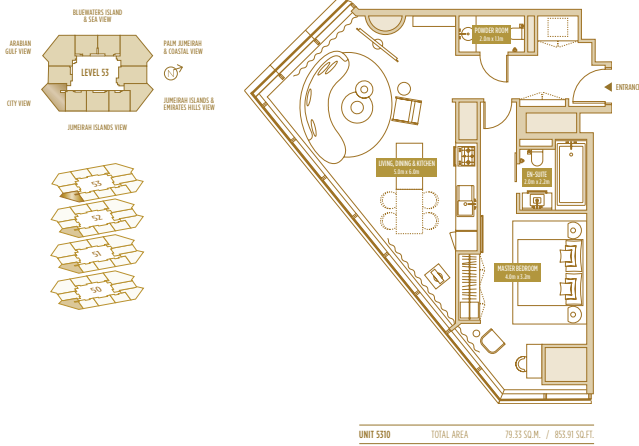
## TYPE 1 BR-4 1 BED APARTMENT

TOTAL AREA  
79.33-85.53 SQ.M. 853.91-920.64 SQ.FT.

SO'UPTOWN DUBAI  
RESIDENCES

## TYPE 1 BR-4A 1 BED APARTMENT

TOTAL AREA  
84.75-90.92 SQ.M. 912.25-978.66 SQ.FT.



Disclaimer: Please note this floor plan is for marketing purposes and is to be used as a guide only. All efforts have been made to ensure its accuracy however changes may be made during the development process and dimensions, fixtures, fittings, finishes and specifications are subject to change without notice. Dimensions may vary.

Disclaimer: Please note this floor plan is for marketing purposes and is to be used as a guide only. All efforts have been made to ensure its accuracy however changes may be made during the development process and dimensions, fixtures, fittings, finishes and specifications are subject to change without notice. Dimensions may vary.



# FLOOR PLAN



EXCLUSIVELINKS  
Real Estate Brokers

SO'UPTOWN DUBAI  
RESIDENCES  
DMCC

SO'UPTOWN DUBAI  
RESIDENCES

## TYPE 1 BR-4B 1 BED APARTMENT

TOTAL AREA

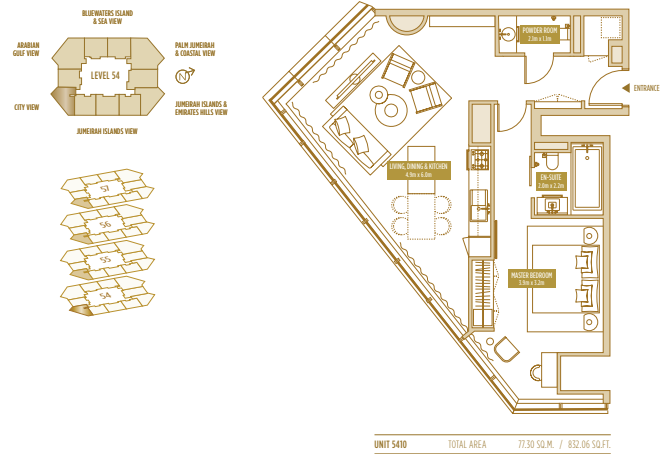
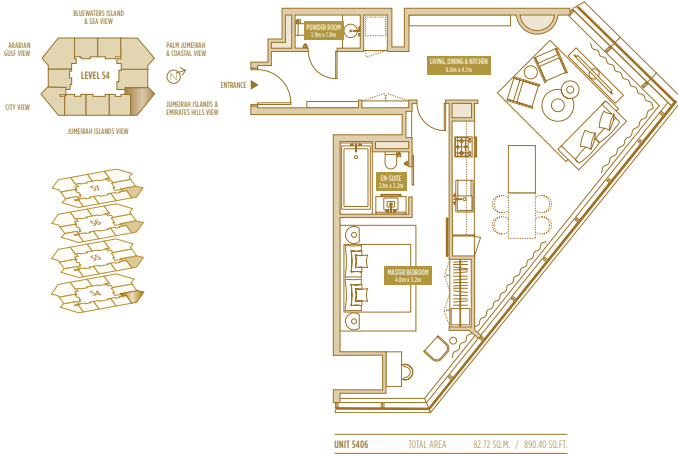
76.36-82.72 SQ.M. 821.94-890.40 SQ.FT.

SO'UPTOWN DUBAI  
RESIDENCES

## TYPE 1 BR-4C 1 BED APARTMENT

TOTAL AREA

70.94-77.30 SQ.M. 763.60-832.06 SQ.FT.



Disclaimer: Please note this floor plan is for marketing purposes and is to be used as a guide only. All efforts have been made to ensure its accuracy however changes may be made during the development process and dimensions, fixtures, fittings, finishes and specifications are subject to change without notice. Dimensions may vary.

Disclaimer: Please note this floor plan is for marketing purposes and is to be used as a guide only. All efforts have been made to ensure its accuracy however changes may be made during the development process and dimensions, fixtures, fittings, finishes and specifications are subject to change without notice. Dimensions may vary.



# FLOOR PLAN



SO'UPTOWN DUBAI  
RESIDENCES  
DMCC

SO'UPTOWN DUBAI  
RESIDENCES

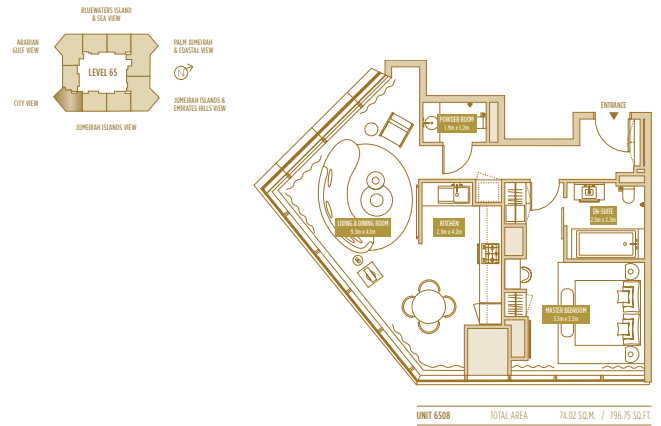
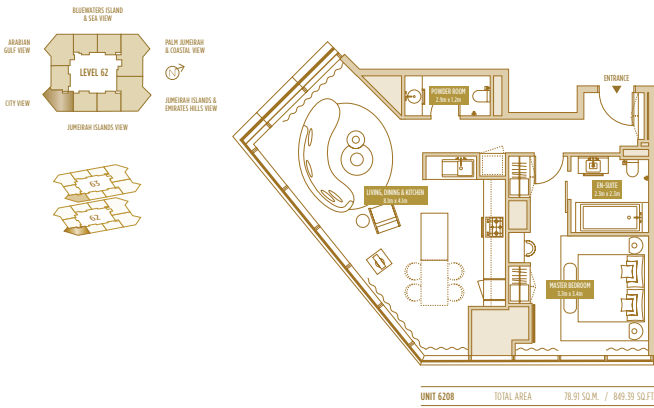
## TYPE 1 BR-5 1 BED APARTMENT

TOTAL AREA  
76.72-78.91 SQ.M. / 825.81-849.39 SQ.FT.

SO'UPTOWN DUBAI  
RESIDENCES

## TYPE 1 BR-5' 1 BED APARTMENT

UNIT 6508 TOTAL AREA  
74.02 SQ.M. / 796.75 SQ.FT.



Disclaimer: Please note this floor plan is for marketing purposes and is to be used as a guide only. All efforts have been made to ensure its accuracy however changes may be made during the development process and dimensions, fixtures, fittings, finishes and specifications are subject to change without notice. Dimensions may vary.

Disclaimer: Please note this floor plan is for marketing purposes and is to be used as a guide only. All efforts have been made to ensure its accuracy however changes may be made during the development process and dimensions, fixtures, fittings, finishes and specifications are subject to change without notice. Dimensions may vary.



# FLOOR PLAN



**EXCLUSIVELINKS**  
Real Estate Brokers

SO'UPTOWN DUBAI  
RESIDENCES  
**DMCC**

SO'UPTOWN DUBAI  
RESIDENCES

## TYPE 1 BR-5A 1 BED APARTMENT

TOTAL AREA

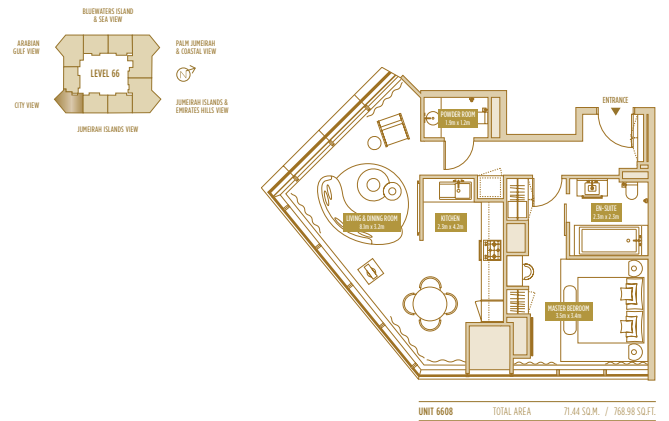
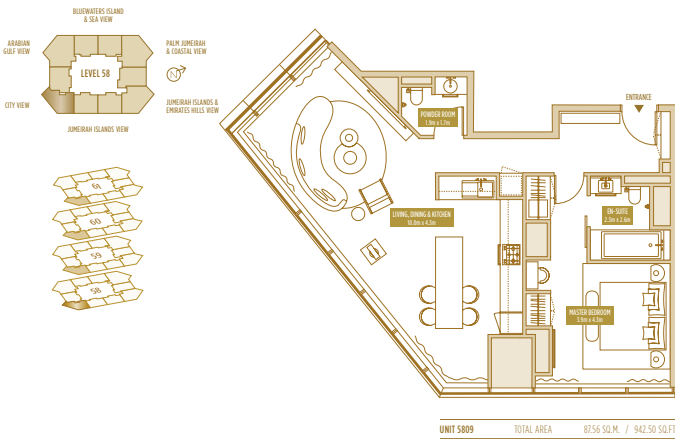
80.97-87.56 SQ.M. / 871.56-942.50 SQ.FT.

SO'UPTOWN DUBAI  
RESIDENCES

## TYPE 1 BR-5B 1 BED APARTMENT

UNIT 6608 TOTAL AREA

71.44 SQ.M. / 768.98 SQ.FT.



Disclaimer: Please note this floor plan is for marketing purposes and is to be used as a guide only. All efforts have been made to ensure its accuracy however changes may be made during the development process and dimensions, fixtures, fittings, finishes and specifications are subject to change without notice. Dimensions may vary.

Disclaimer: Please note this floor plan is for marketing purposes and is to be used as a guide only. All efforts have been made to ensure its accuracy however changes may be made during the development process and dimensions, fixtures, fittings, finishes and specifications are subject to change without notice. Dimensions may vary.



# FLOOR PLAN



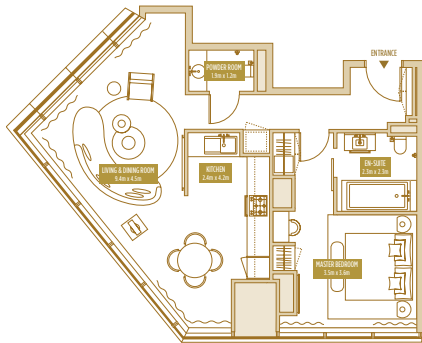
**EXCLUSIVELINKS**  
Real Estate Brokers

SO UPTOWN DUBAI  
RESIDENCES  
**DMCC**

SO UPTOWN DUBAI  
RESIDENCES

## TYPE 1 BR-5B' 1 BED APARTMENT

UNIT 6408 TOTAL AREA  
76.55 SQ.M. / 823.98 SQ.FT.



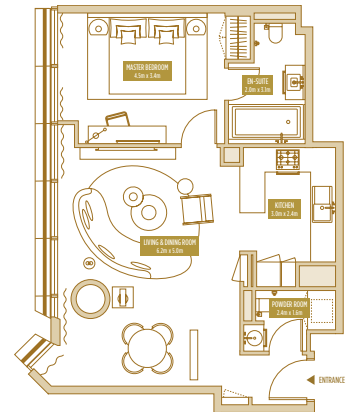
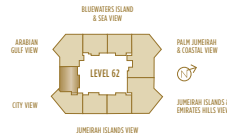
UNIT 6408 TOTAL AREA 76.55 SQ.M. / 823.98 SQ.FT.

Disclaimer: Please note this floor plan is for marketing purposes and is to be used as a guide only. All efforts have been made to ensure its accuracy however changes may be made during the development process and dimensions, fixtures, fittings, finishes and specifications are subject to change without notice. Dimensions may vary.

SO UPTOWN DUBAI  
RESIDENCES

## TYPE 1 BR-6 1 BED APARTMENT

TOTAL AREA  
58.28-71.29 SQ.M. 627.33-767.37 SQ.FT.



UNIT 6209 TOTAL AREA 71.29 SQ.M. / 767.37 SQ.FT.

Disclaimer: Please note this floor plan is for marketing purposes and is to be used as a guide only. All efforts have been made to ensure its accuracy however changes may be made during the development process and dimensions, fixtures, fittings, finishes and specifications are subject to change without notice. Dimensions may vary.



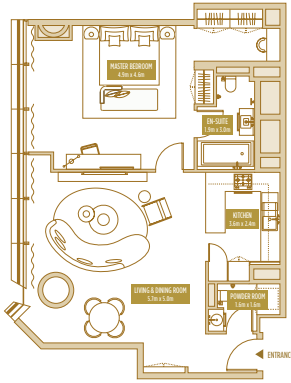
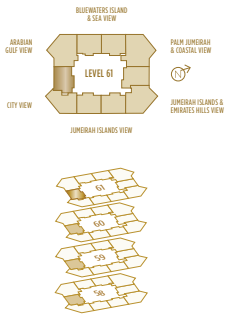
# FLOOR PLAN

SO UPTOWN DUBAI  
RESIDENCES

## TYPE 1 BR-6A 1 BED APARTMENT

TOTAL AREA

86.10-95.44 SQ.M. / 926.78-1027.32 SQ.FT.



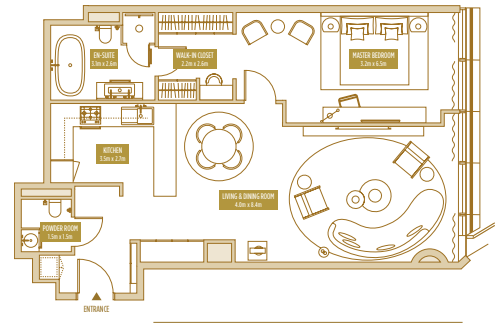
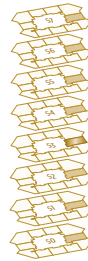
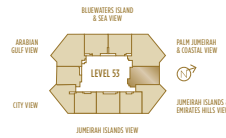
UNIT 610 TOTAL AREA 86.10 SQ.M. / 926.78 SQ.FT.

SO UPTOWN DUBAI  
RESIDENCES

## TYPE 1 BR-7 1 BED APARTMENT

TOTAL AREA

85.06-99.71 SQ.M. / 915.59-1073.28 SQ.FT.



UNIT 5505 TOTAL AREA 85.57 SQ.M. / 917.09 SQ.FT.

Disclaimer: Please note this floor plan is for marketing purposes and is to be used as a guide only. All efforts have been made to ensure its accuracy however changes may be made during the development process and dimensions, fixtures, fittings, finishes and specifications are subject to change without notice. Dimensions may vary.

Disclaimer: Please note this floor plan is for marketing purposes and is to be used as a guide only. All efforts have been made to ensure its accuracy however changes may be made during the development process and dimensions, fixtures, fittings, finishes and specifications are subject to change without notice. Dimensions may vary.



# FLOOR PLAN



**EXCLUSIVELINKS**  
Real Estate Brokers

SO'UPTOWN DUBAI  
RESIDENCES  
**DMCC**

SO'UPTOWN DUBAI  
RESIDENCES

## TYPE 1 BR-8 1 BED APARTMENT

TOTAL AREA

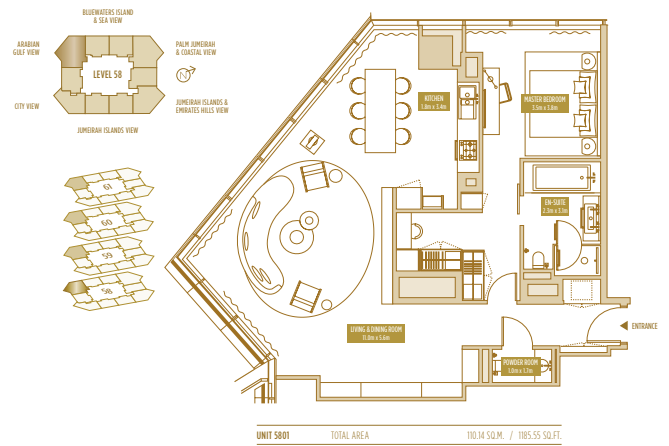
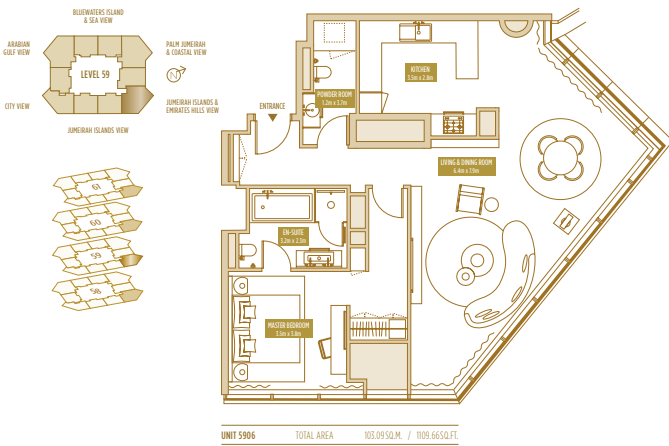
97.28-105.55 SQ.M. / 1047.12-1136.14 SQ.FT.

SO'UPTOWN DUBAI  
RESIDENCES

## TYPE 1 BR-9 1 BED APARTMENT

TOTAL AREA

101.82-110.14 SQ.M. / 1095.99-1185.55 SQ.FT.



Disclaimer: Please note this floor plan is for marketing purposes and is to be used as a guide only. All efforts have been made to ensure its accuracy however changes may be made during the development process and dimensions, fixtures, fittings, finishes and specifications are subject to change without notice. Dimensions may vary.

Disclaimer: Please note this floor plan is for marketing purposes and is to be used as a guide only. All efforts have been made to ensure its accuracy however changes may be made during the development process and dimensions, fixtures, fittings, finishes and specifications are subject to change without notice. Dimensions may vary.



# FLOOR PLAN



SO'UPTOWN DUBAI  
RESIDENCES  
DMCC

SO'UPTOWN DUBAI  
RESIDENCES

## TYPE 1 BR-9A 1 BED APARTMENT

TOTAL AREA

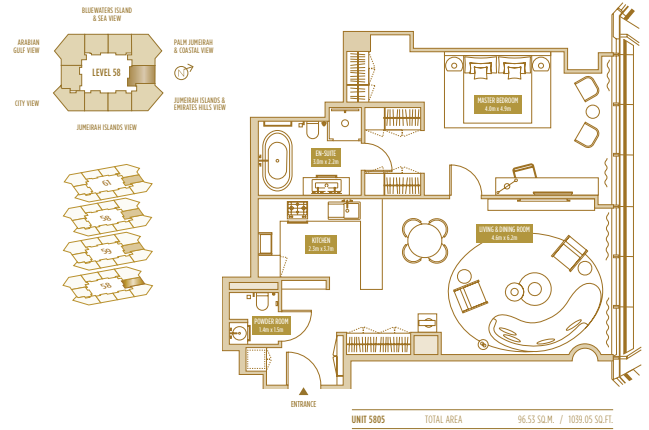
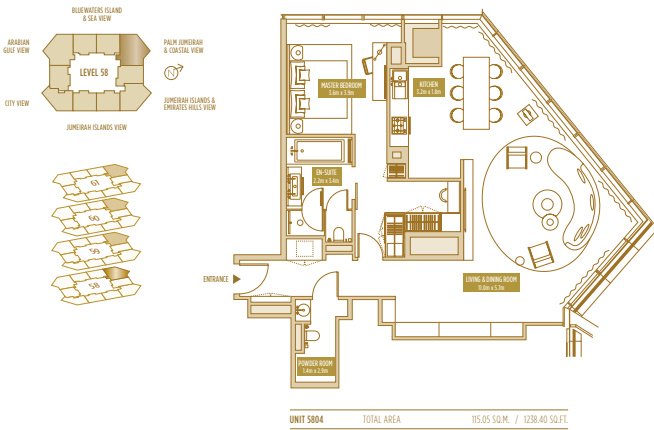
106.73-115.05 SQ.M. / 1148.84-1238.40 SQ.FT.

SO'UPTOWN DUBAI  
RESIDENCES

## TYPE 1 BR-10 1 BED APARTMENT

TOTAL AREA

88.61-96.53 SQ.M. / 953.80-1039.05 SQ.FT.



Disclaimer: Please note this floor plan is for marketing purposes and is to be used as a guide only. All efforts have been made to ensure its accuracy however changes may be made during the development process and dimensions, fixtures, fittings, finishes and specifications are subject to change without notice. Dimensions may vary.

Disclaimer: Please note this floor plan is for marketing purposes and is to be used as a guide only. All efforts have been made to ensure its accuracy however changes may be made during the development process and dimensions, fixtures, fittings, finishes and specifications are subject to change without notice. Dimensions may vary.



# FLOOR PLAN



EXCLUSIVELINKS  
Real Estate Brokers

SO'UPTOWN DUBAI  
RESIDENCES  
DMCC

SO'UPTOWN DUBAI  
RESIDENCES

## TYPE 2 BR-2 2 BED APARTMENT

TOTAL AREA

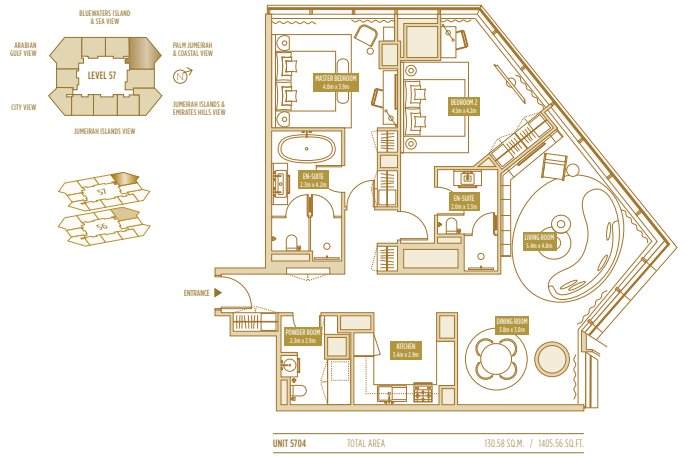
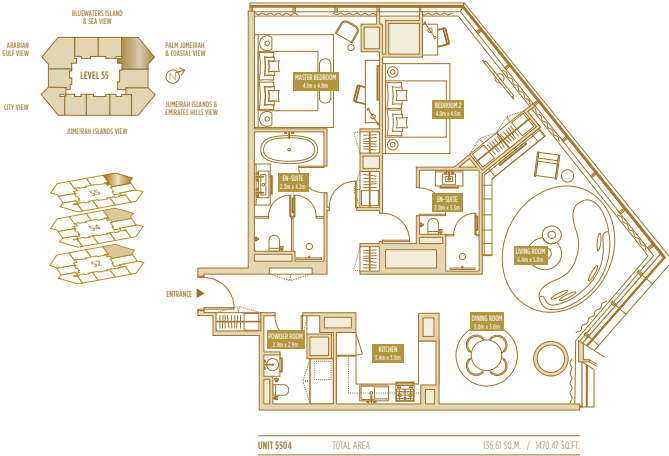
136.61-145.39 SQ.M. / 1470.47-1562.83 SQ.FT.

SO'UPTOWN DUBAI  
RESIDENCES

## TYPE 2 BR-2' 2 BED APARTMENT

TOTAL AREA

130.58-133.62 SQ.M. / 1405.56-1438.29 SQ.FT.



Disclaimer: Please note this floor plan is for marketing purposes and is to be used as a guide only. All efforts have been made to ensure its accuracy however changes may be made during the development process and dimensions, fixtures, fittings, finishes and specifications are subject to change without notice. Dimensions may vary.

Disclaimer: Please note this floor plan is for marketing purposes and is to be used as a guide only. All efforts have been made to ensure its accuracy however changes may be made during the development process and dimensions, fixtures, fittings, finishes and specifications are subject to change without notice. Dimensions may vary.



# FLOOR PLAN



**EXCLUSIVELINKS**  
Real Estate Brokers

SO'UPTOWN DUBAI  
RESIDENCES  
**DMCC**

SO'UPTOWN DUBAI  
RESIDENCES

## TYPE 2 BR-2A 2 BED APARTMENT

TOTAL AREA

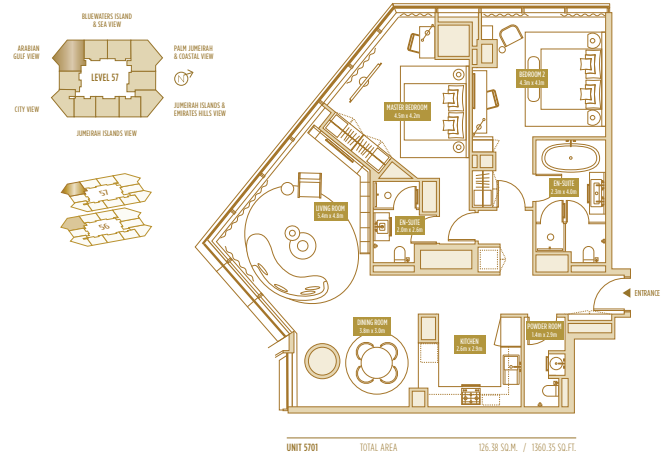
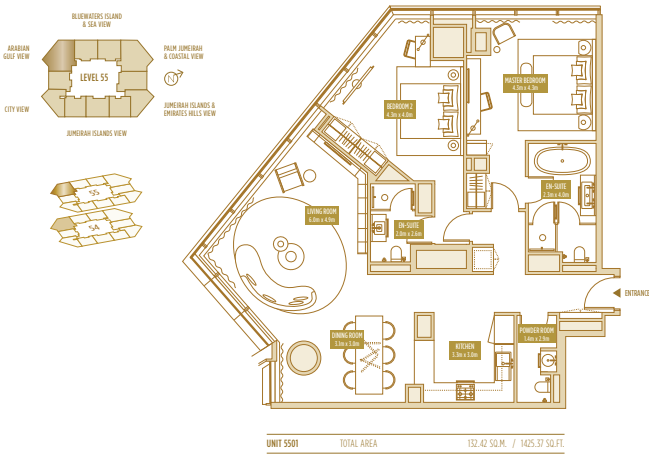
132.42-135.35 SQ.M. / 1425.37-1456.91 SQ.FT.

SO'UPTOWN DUBAI  
RESIDENCES

## TYPE 2 BR-2A' 2 BED APARTMENT

TOTAL AREA

126.38-129.44 SQ.M. / 1360.35-1393.29 SQ.FT.



Disclaimer: Please note this floor plan is for marketing purposes and is to be used as a guide only. All efforts have been made to ensure its accuracy however changes may be made during the development process and dimensions, fixtures, fittings, finishes and specifications are subject to change without notice. Dimensions may vary.

Disclaimer: Please note this floor plan is for marketing purposes and is to be used as a guide only. All efforts have been made to ensure its accuracy however changes may be made during the development process and dimensions, fixtures, fittings, finishes and specifications are subject to change without notice. Dimensions may vary.



# FLOOR PLAN



**EXCLUSIVELINKS**  
Real Estate Brokers

SO UPTOWN DUBAI  
RESIDENCES  
**DMCC**

SO UPTOWN DUBAI  
RESIDENCES

## TYPE 2 BR-2+M 2 BED APARTMENT

TOTAL AREA

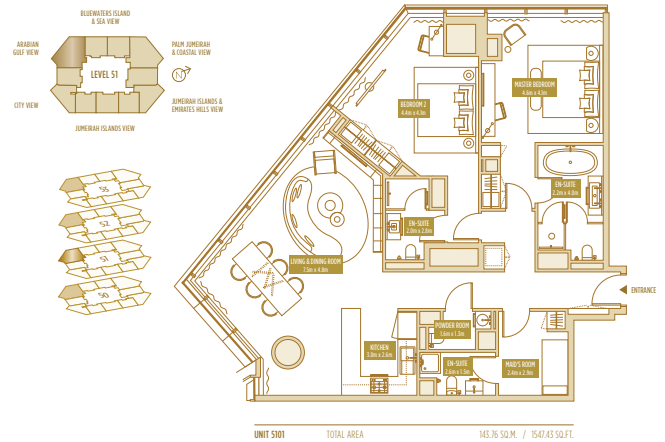
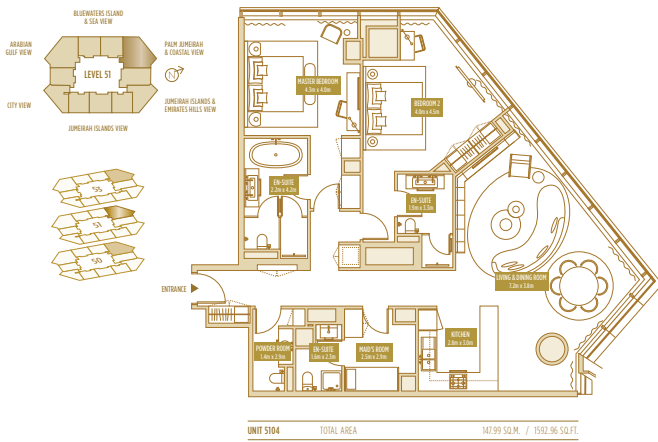
142.42-150.69 SQ.M. / 1533.01-1622.03 SQ.FT.

SO UPTOWN DUBAI  
RESIDENCES

## TYPE 2 BR-2A+M 2 BED APARTMENT

TOTAL AREA

138.19-146.46 SQ.M. / 1487.48-1576.50 SQ.FT.



Disclaimer: Please note this floor plan is for marketing purposes and is to be used as a guide only. All efforts have been made to ensure its accuracy however changes may be made during the development process and dimensions, fixtures, fittings, finishes and specifications are subject to change without notice. Dimensions may vary.

Disclaimer: Please note this floor plan is for marketing purposes and is to be used as a guide only. All efforts have been made to ensure its accuracy however changes may be made during the development process and dimensions, fixtures, fittings, finishes and specifications are subject to change without notice. Dimensions may vary.



# FLOOR PLAN



**EXCLUSIVELINKS**  
Real Estate Brokers

SO'UPTOWN DUBAI  
RESIDENCES  
**DMCC**

SO'UPTOWN DUBAI  
RESIDENCES

## TYPE 2 BR-3 2 BED APARTMENT

TOTAL AREA

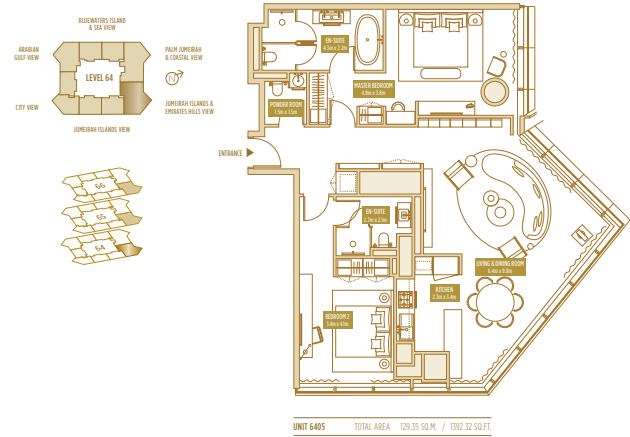
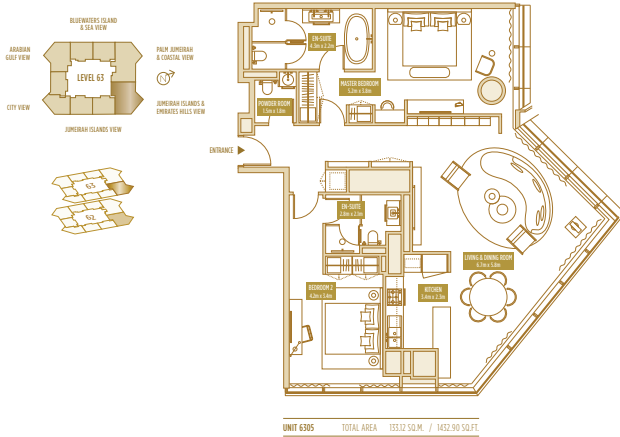
133.12-136.85 SQ.M. / 1432.90-1473.05 SQ.FT.

SO'UPTOWN DUBAI  
RESIDENCES

## TYPE 2 BR-3' 2 BED APARTMENT

TOTAL AREA

121.65-129.35 SQ.M. / 1309.44-1392.32 SQ.FT.



Disclaimer: Please note this floor plan is for marketing purposes and is to be used as a guide only. All efforts have been made to ensure its accuracy however changes may be made during the development process and dimensions, fixtures, fittings, finishes and specifications are subject to change without notice. Dimensions may vary.

Disclaimer: Please note this floor plan is for marketing purposes and is to be used as a guide only. All efforts have been made to ensure its accuracy however changes may be made during the development process and dimensions, fixtures, fittings, finishes and specifications are subject to change without notice. Dimensions may vary.



# FLOOR PLAN



**EXCLUSIVELINKS**  
Real Estate Brokers

SO'UPTOWN DUBAI  
RESIDENCES  
**DMCC**

SO'UPTOWN DUBAI  
RESIDENCES

## TYPE 2 BR-4 2 BED APARTMENT

TOTAL AREA

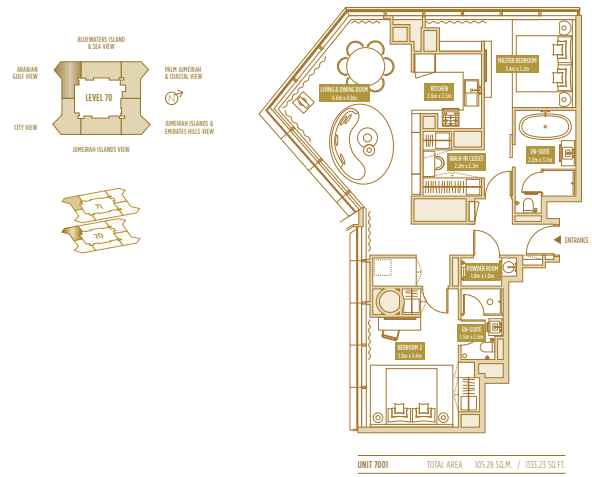
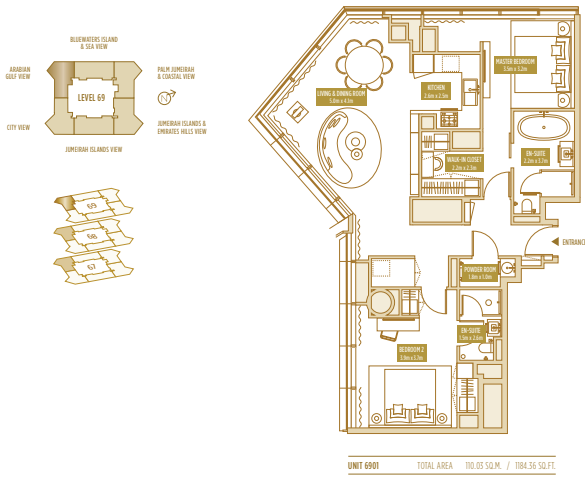
110.03-119.39 SQ.M. / 1184.36-1285.11 SQ.FT.

SO'UPTOWN DUBAI  
RESIDENCES

## TYPE 2 BR-4' 2 BED APARTMENT

TOTAL AREA

100.44-105.28 SQ.M. / 1081.14-1133.23 SQ.FT.



Disclaimer: Please note this floor plan is for marketing purposes and is to be used as a guide only. All efforts have been made to ensure its accuracy however changes may be made during the development process and dimensions, fixtures, fittings, finishes and specifications are subject to change without notice. Dimensions may vary.

Disclaimer: Please note this floor plan is for marketing purposes and is to be used as a guide only. All efforts have been made to ensure its accuracy however changes may be made during the development process and dimensions, fixtures, fittings, finishes and specifications are subject to change without notice. Dimensions may vary.



# FLOOR PLAN



**EXCLUSIVELINKS**  
Real Estate Brokers

SO'UPTOWN DUBAI  
RESIDENCES  
**DMCC**

SO'UPTOWN DUBAI  
RESIDENCES

## TYPE 2 BR-4A 2 BED APARTMENT

TOTAL AREA

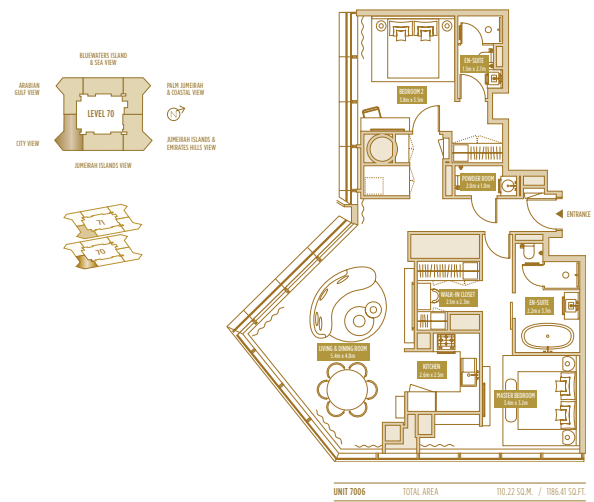
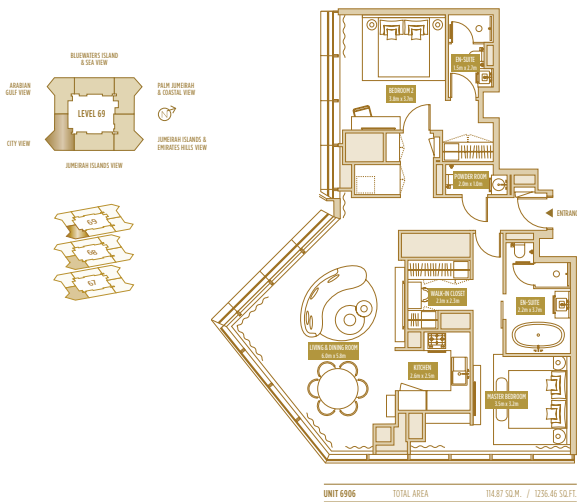
114.87-124.01 SQ.M. / 1236.46-1334.84 SQ.FT.

SO'UPTOWN DUBAI  
RESIDENCES

## TYPE 2 BR-4A' 2 BED APARTMENT

TOTAL AREA

105.51-110.22 SQ.M. / 1135.71-1186.41 SQ.FT.



Disclaimer: Please note this floor plan is for marketing purposes and is to be used as a guide only. All efforts have been made to ensure its accuracy however changes may be made during the development process and dimensions, fixtures, fittings, finishes and specifications are subject to change without notice. Dimensions may vary.

Disclaimer: Please note this floor plan is for marketing purposes and is to be used as a guide only. All efforts have been made to ensure its accuracy however changes may be made during the development process and dimensions, fixtures, fittings, finishes and specifications are subject to change without notice. Dimensions may vary.



# FLOOR PLAN



**EXCLUSIVELINKS**  
Real Estate Brokers

SO'UPTOWN DUBAI  
RESIDENCES  
**DMCC**

SO'UPTOWN DUBAI  
RESIDENCES

## TYPE 2 BR-5+M 2 BED APARTMENT

TOTAL AREA

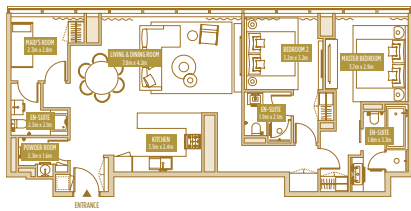
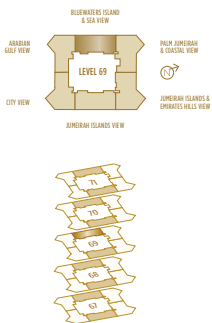
112.02-117.27 SQ.M. / 1205.78-1262.29 SQ.FT.

SO'UPTOWN DUBAI  
RESIDENCES

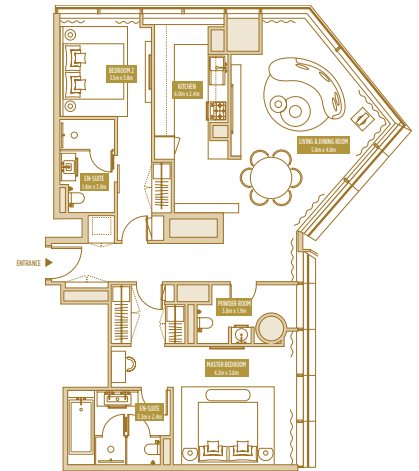
## TYPE 2 BR-6 2 BED APARTMENT

TOTAL AREA

122.98-132.44 SQ.M. / 1323.76-1425.58 SQ.FT.



UNIT 6902 TOTAL AREA 114.62 SQ.M. / 1233.77 SQ.FT.



UNIT 6903 TOTAL AREA 122.98 SQ.M. / 1323.76 SQ.FT.

Disclaimer: Please note this floor plan is for marketing purposes and is to be used as a guide only. All efforts have been made to ensure its accuracy however changes may be made during the development process and dimensions, fixtures, fittings, finishes and specifications are subject to change without notice. Dimensions may vary.

Disclaimer: Please note this floor plan is for marketing purposes and is to be used as a guide only. All efforts have been made to ensure its accuracy however changes may be made during the development process and dimensions, fixtures, fittings, finishes and specifications are subject to change without notice. Dimensions may vary.



# FLOOR PLAN



**EXCLUSIVELINKS**  
Real Estate Brokers

SO'UPTOWN DUBAI  
RESIDENCES  
**DMCC**

SO'UPTOWN DUBAI  
RESIDENCES

## TYPE 2 BR-6' 2 BED APARTMENT

TOTAL AREA

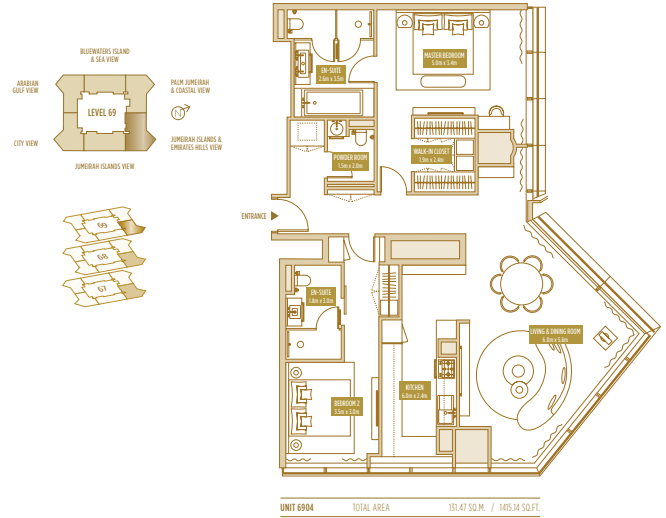
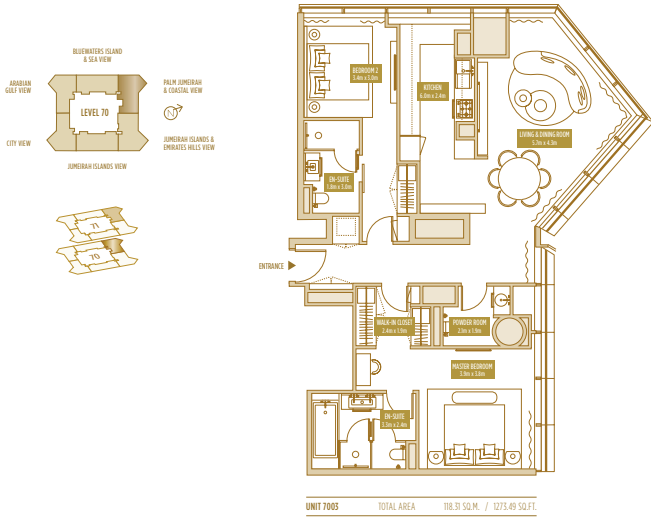
113.36-118.31 SQ.M. / 1220.21-1275.49 SQ.FT.

SO'UPTOWN DUBAI  
RESIDENCES

## TYPE 2 BR-6A 2 BED APARTMENT

TOTAL AREA

131.47-140.60 SQ.M. / 1415.14-1513.42 SQ.FT.



Disclaimer: Please note this floor plan is for marketing purposes and is to be used as a guide only. All efforts have been made to ensure its accuracy however changes may be made during the development process and dimensions, fixtures, fittings, finishes and specifications are subject to change without notice. Dimensions may vary.

Disclaimer: Please note this floor plan is for marketing purposes and is to be used as a guide only. All efforts have been made to ensure its accuracy however changes may be made during the development process and dimensions, fixtures, fittings, finishes and specifications are subject to change without notice. Dimensions may vary.



# FLOOR PLAN



**EXCLUSIVELINKS**  
Real Estate Brokers

SO'UPTOWN DUBAI  
RESIDENCES  
**DMCC**

SO'UPTOWN DUBAI  
RESIDENCES

## TYPE 2 BR-6A' 2 BED APARTMENT

TOTAL AREA

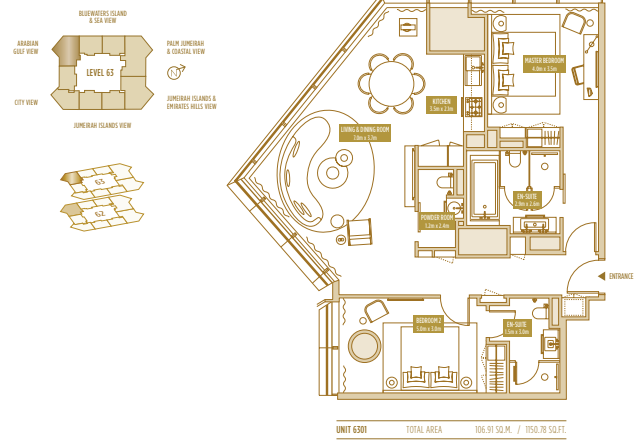
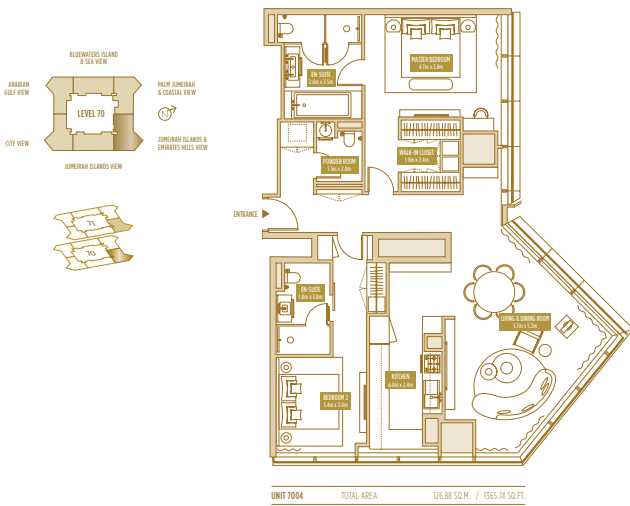
122.18-126.88 SQ.M. / 1315.15-1365.74 SQ.FT.

SO'UPTOWN DUBAI  
RESIDENCES

## TYPE 2 BR-7 2 BED APARTMENT

TOTAL AREA

106.91-110.29 SQ.M. / 1150.78-1187.16 SQ.FT.



Disclaimer: Please note this floor plan is for marketing purposes and is to be used as a guide only. All efforts have been made to ensure its accuracy however changes may be made during the development process and dimensions, fixtures, fittings, finishes and specifications are subject to change without notice. Dimensions may vary.

Disclaimer: Please note this floor plan is for marketing purposes and is to be used as a guide only. All efforts have been made to ensure its accuracy however changes may be made during the development process and dimensions, fixtures, fittings, finishes and specifications are subject to change without notice. Dimensions may vary.



# FLOOR PLAN



**EXCLUSIVELINKS**  
Real Estate Brokers

SO UPTOWN DUBAI  
RESIDENCES  
**DMCC**

SO UPTOWN DUBAI  
RESIDENCES

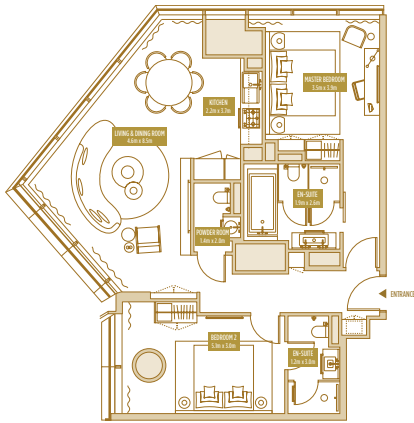
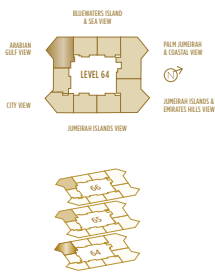
## TYPE 2 BR-7A 2 BED APARTMENT

TOTAL AREA  
96.39-103.48 SQ.M. / 1037.54-1113.86 SQ.FT.

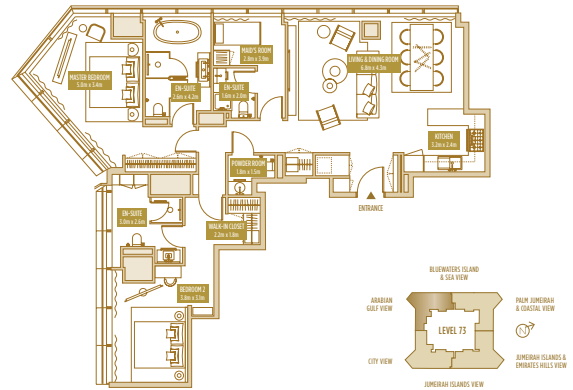
SO UPTOWN DUBAI  
RESIDENCES

## TYPE 2 BR-8+M 2 BED APARTMENT

UNIT 7301 TOTAL AREA  
141.92 SQ.M. / 1527.63 SQ.FT.



UNIT 6401 TOTAL AREA 103.48 SQ.M. / 1113.86 SQ.FT.



UNIT 7301 TOTAL AREA 141.92 SQ.M. / 1527.63 SQ.FT.

Disclaimer: Please note this floor plan is for marketing purposes and is to be used as a guide only. All efforts have been made to ensure its accuracy however changes may be made during the development process and dimensions, fixtures, fittings, finishes and specifications are subject to change without notice. Dimensions may vary.

Disclaimer: Please note this floor plan is for marketing purposes and is to be used as a guide only. All efforts have been made to ensure its accuracy however changes may be made during the development process and dimensions, fixtures, fittings, finishes and specifications are subject to change without notice. Dimensions may vary.





# FLOOR PLAN



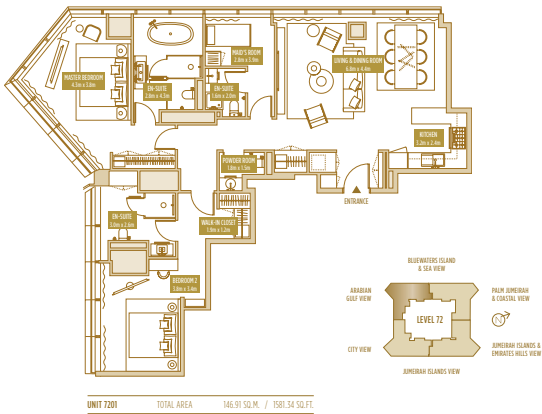
**EXCLUSIVELINKS**  
Real Estate Brokers

SO'UPTOWN DUBAI  
RESIDENCES  
**DMCC**

SO'UPTOWN DUBAI  
RESIDENCES

## TYPE 2 BR-8A+M 2 BED APARTMENT

UNIT 7201 TOTAL AREA  
146.91 SQ.M. / 1581.34 SQ.FT.

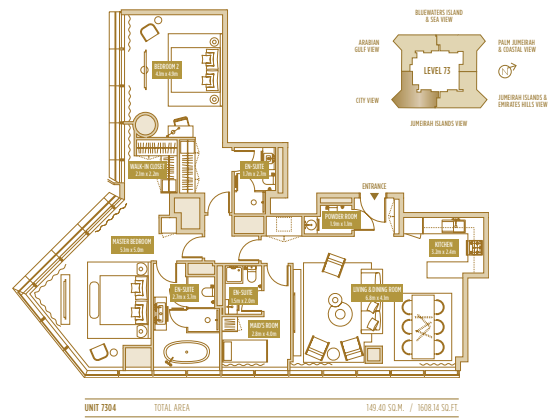


Disclaimer: Please note this floor plan is for marketing purposes and is to be used as a guide only. All efforts have been made to ensure its accuracy however changes may be made during the development process and dimensions, fixtures, fittings, finishes and specifications are subject to change without notice. Dimensions may vary.

SO'UPTOWN DUBAI  
RESIDENCES

## TYPE 2 BR-9+M 2 BED APARTMENT

UNIT 7304 TOTAL AREA  
149.40 SQ.M. / 1608.14 SQ.FT.



Disclaimer: Please note this floor plan is for marketing purposes and is to be used as a guide only. All efforts have been made to ensure its accuracy however changes may be made during the development process and dimensions, fixtures, fittings, finishes and specifications are subject to change without notice. Dimensions may vary.



# FLOOR PLAN



**EXCLUSIVELINKS**  
Real Estate Brokers

SO'UPTOWN DUBAI  
RESIDENCES  
**DMCC**

SO'UPTOWN DUBAI  
RESIDENCES

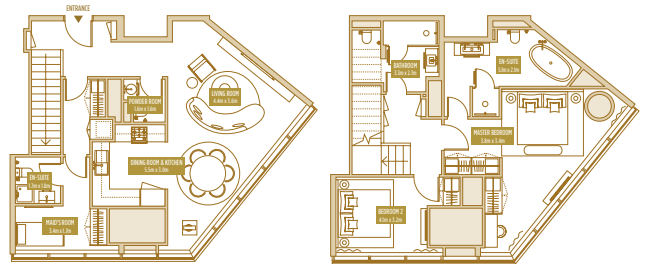
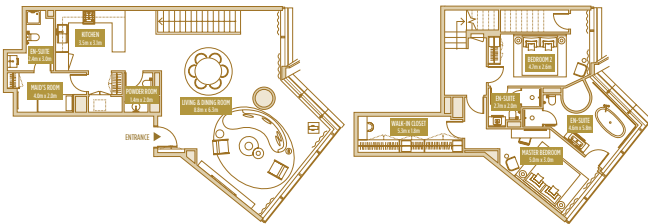
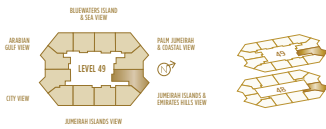
## TYPE 5 2 BED DUPLEX

UNIT 4907 TOTAL AREA  
188.46 SQ.M. / 2028.58 SQ.FT.

SO'UPTOWN DUBAI  
RESIDENCES

## TYPE 6 2 BED DUPLEX

UNIT 4908 TOTAL AREA  
158.10 SQ.M. / 1701.79 SQ.FT.



Disclaimer: Please note this floor plan is for marketing purposes and is to be used as a guide only. All efforts have been made to ensure its accuracy however changes may be made during the development process and dimensions, fixtures, fittings, finishes and specifications are subject to change without notice. Dimensions may vary.

Disclaimer: Please note this floor plan is for marketing purposes and is to be used as a guide only. All efforts have been made to ensure its accuracy however changes may be made during the development process and dimensions, fixtures, fittings, finishes and specifications are subject to change without notice. Dimensions may vary.



# FLOOR PLAN



**EXCLUSIVELINKS**  
Real Estate Brokers

SO'UPTOWN DUBAI  
RESIDENCES  
**DMCC**

SO'UPTOWN DUBAI  
RESIDENCES

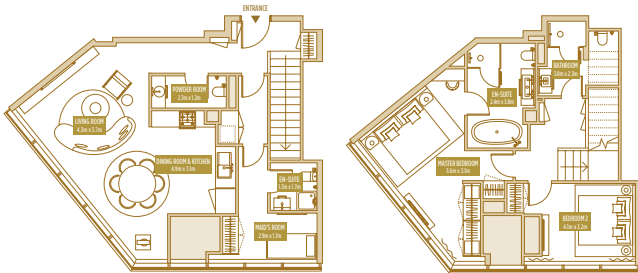
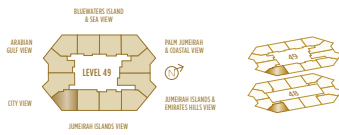
## TYPE 7 2 BED DUPLEX

UNIT 4911 TOTAL AREA  
148.21 SQ.M. / 1595.33 SQ.FT.

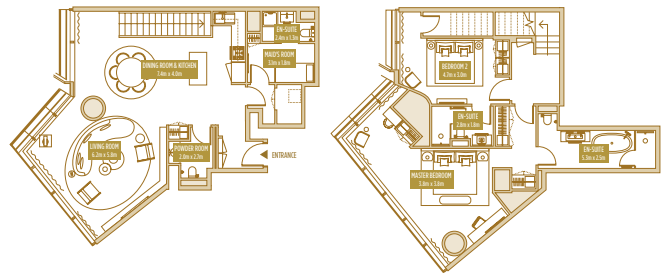
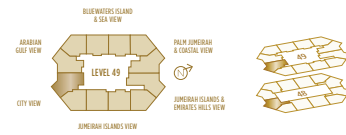
SO'UPTOWN DUBAI  
RESIDENCES

## TYPE 8 2 BED DUPLEX

UNIT 4912 TOTAL AREA  
189.80 SQ.M. / 2043.01 SQ.FT.



Disclaimer: Please note this floor plan is for marketing purposes and is to be used as a guide only. All efforts have been made to ensure its accuracy however changes may be made during the development process and dimensions, fixtures, fittings, finishes and specifications are subject to change without notice. Dimensions may vary.



Disclaimer: Please note this floor plan is for marketing purposes and is to be used as a guide only. All efforts have been made to ensure its accuracy however changes may be made during the development process and dimensions, fixtures, fittings, finishes and specifications are subject to change without notice. Dimensions may vary.



# FLOOR PLAN



**EXCLUSIVELINKS**  
Real Estate Brokers

SO'UPTOWN DUBAI  
RESIDENCES  
**DMCC**

SO'UPTOWN DUBAI  
RESIDENCES

## TYPE 3 BR-1 3 BED APARTMENT

TOTAL AREA

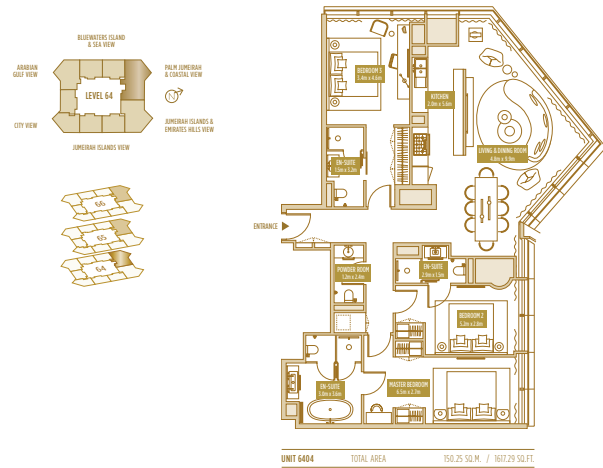
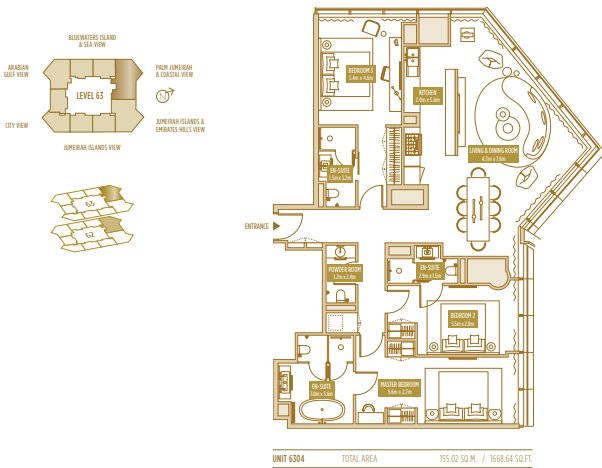
155.02-159.74 SQ.M. / 1668.64-1719.44 SQ.FT.

SO'UPTOWN DUBAI  
RESIDENCES

## TYPE 3 BR-1' 3 BED APARTMENT

TOTAL AREA

140.53-150.25 SQ.M. / 1512.66-1617.29 SQ.FT.



Disclaimer: Please note this floor plan is for marketing purposes and is to be used as a guide only. All efforts have been made to ensure its accuracy however changes may be made during the development process and dimensions, fixtures, fittings, finishes and specifications are subject to change without notice. Dimensions may vary.

Disclaimer: Please note this floor plan is for marketing purposes and is to be used as a guide only. All efforts have been made to ensure its accuracy however changes may be made during the development process and dimensions, fixtures, fittings, finishes and specifications are subject to change without notice. Dimensions may vary.



# FLOOR PLAN



**EXCLUSIVELINKS**  
Real Estate Brokers

SO' UPTOWN DUBAI  
RESIDENCES  
**DMCC**

SO' UPTOWN DUBAI  
RESIDENCES

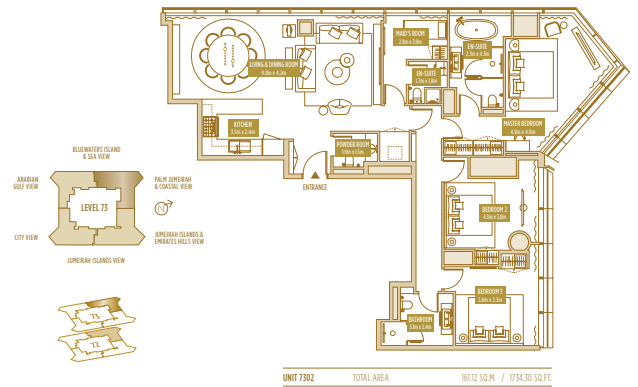
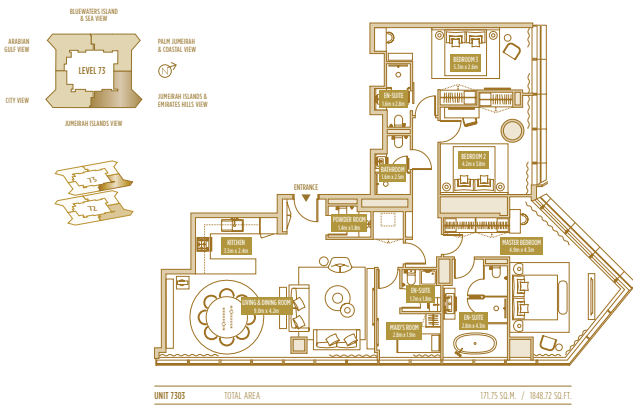
## TYPE 3 BR-2+M 3 BED APARTMENT

TOTAL AREA  
171.75-177.30 SQ.M. / 1848.72-1908.46 SQ.FT.

SO' UPTOWN DUBAI  
RESIDENCES

## TYPE 3 BR-2A+M 3 BED APARTMENT

TOTAL AREA  
161.12-166.67 SQ.M. / 1734.30-1794.04 SQ.FT.



Disclaimer: Please note this floor plan is for marketing purposes and is to be used as a guide only. All efforts have been made to ensure its accuracy however changes may be made during the development process and dimensions, fixtures, fittings, finishes and specifications are subject to change without notice. Dimensions may vary.

Disclaimer: Please note this floor plan is for marketing purposes and is to be used as a guide only. All efforts have been made to ensure its accuracy however changes may be made during the development process and dimensions, fixtures, fittings, finishes and specifications are subject to change without notice. Dimensions may vary.



# FLOOR PLAN



**EXCLUSIVELINKS**  
Real Estate Brokers

SO'UPTOWN DUBAI  
RESIDENCES  
**DMCC**

SO'UPTOWN DUBAI  
RESIDENCES

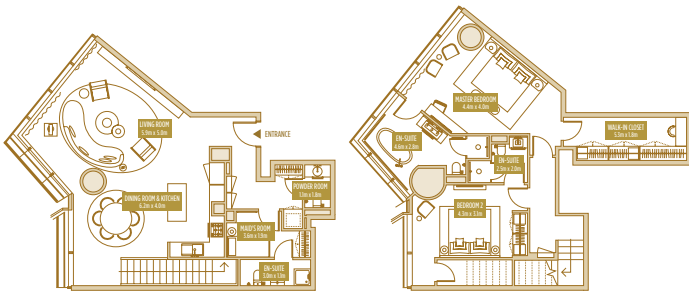
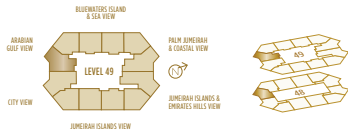
## TYPE 1 2 BED DUPLEX

UNIT 4901 TOTAL AREA  
181.35 SQ.M. / 1952.05 SQ.FT.

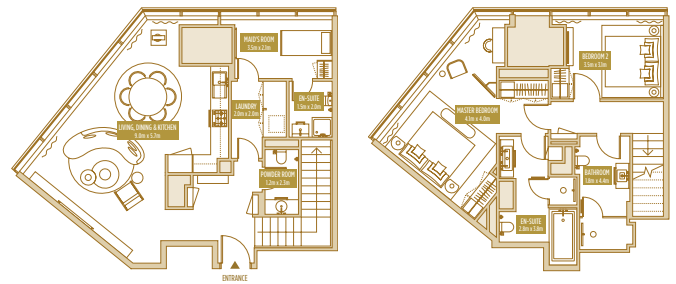
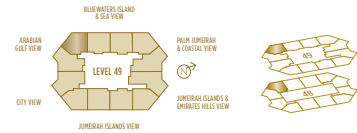
SO'UPTOWN DUBAI  
RESIDENCES

## TYPE 2A 2 BED DUPLEX

UNIT 4902 TOTAL AREA  
150.55 SQ.M. / 1620.52 SQ.FT.



Disclaimer: Please note this floor plan is for marketing purposes and is to be used as a guide only. All efforts have been made to ensure its accuracy however changes may be made during the development process and dimensions, fixtures, fittings, finishes and specifications are subject to change without notice. Dimensions may vary.



Disclaimer: Please note this floor plan is for marketing purposes and is to be used as a guide only. All efforts have been made to ensure its accuracy however changes may be made during the development process and dimensions, fixtures, fittings, finishes and specifications are subject to change without notice. Dimensions may vary.



# FLOOR PLAN



**EXCLUSIVELINKS**  
Real Estate Brokers

SO'UPTOWN DUBAI  
RESIDENCES  
**DMCC**

SO'UPTOWN DUBAI  
RESIDENCES

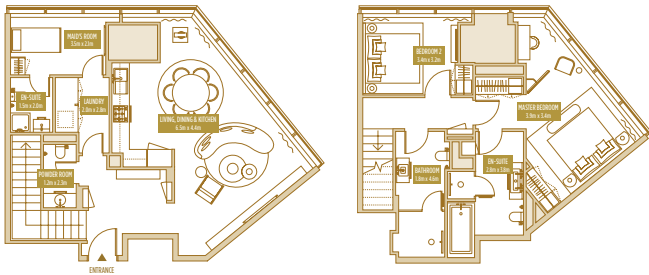
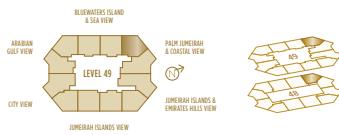
## TYPE 2B 2 BED DUPLEX

UNIT 4905 TOTAL AREA  
153.46 SQ.M. / 1651.84 SQ.FT.

SO'UPTOWN DUBAI  
RESIDENCES

## TYPE 3A 2 BED DUPLEX

UNIT 4903 TOTAL AREA  
189.18 SQ.M. / 2036.33 SQ.FT.



Disclaimer: Please note this floor plan is for marketing purposes and is to be used as a guide only. All efforts have been made to ensure its accuracy however changes may be made during the development process and dimensions, fixtures, fittings, finishes and specifications are subject to change without notice. Dimensions may vary.

Disclaimer: Please note this floor plan is for marketing purposes and is to be used as a guide only. All efforts have been made to ensure its accuracy however changes may be made during the development process and dimensions, fixtures, fittings, finishes and specifications are subject to change without notice. Dimensions may vary.



# FLOOR PLAN



**EXCLUSIVELINKS**  
Real Estate Brokers

SO'UPTOWN DUBAI  
RESIDENCES  
**DMCC**

SO'UPTOWN DUBAI  
RESIDENCES

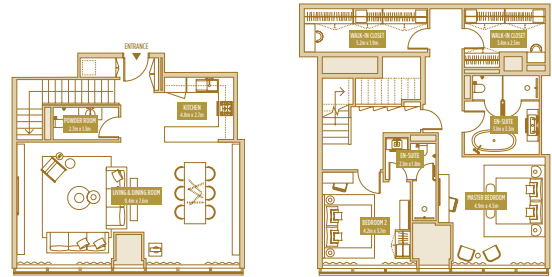
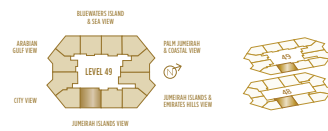
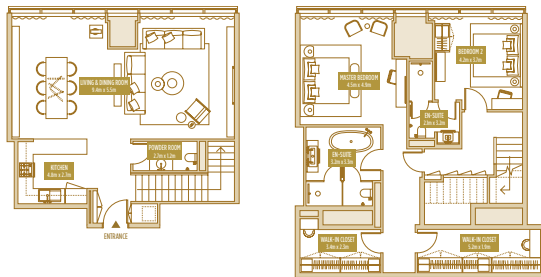
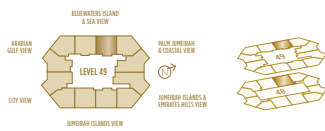
## TYPE 3B 2 BED DUPLEX

UNIT 4904 TOTAL AREA  
189.77 SQ.M. / 2042.68 SQ.FT.

SO'UPTOWN DUBAI  
RESIDENCES

## TYPE 3C 2 BED DUPLEX

UNIT 4910 TOTAL AREA  
190.54 SQ.M. / 2050.97 SQ.FT.



Disclaimer: Please note this floor plan is for marketing purposes and is to be used as a guide only. All efforts have been made to ensure its accuracy however changes may be made during the development process and dimensions, fixtures, fittings, finishes and specifications are subject to change without notice. Dimensions may vary.

Disclaimer: Please note this floor plan is for marketing purposes and is to be used as a guide only. All efforts have been made to ensure its accuracy however changes may be made during the development process and dimensions, fixtures, fittings, finishes and specifications are subject to change without notice. Dimensions may vary.



# FLOOR PLAN



EXCLUSIVELINKS  
Real Estate Brokers

SO'UPTOWN DUBAI  
RESIDENCES  
DMCC

SO'UPTOWN DUBAI  
RESIDENCES

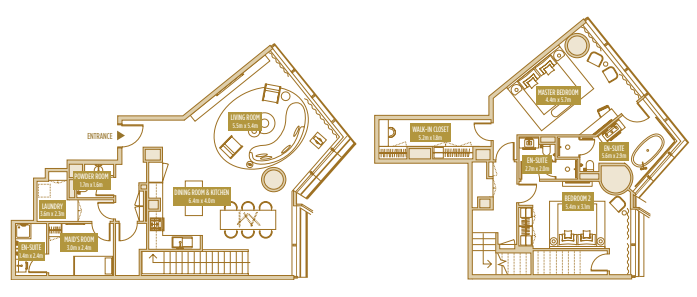
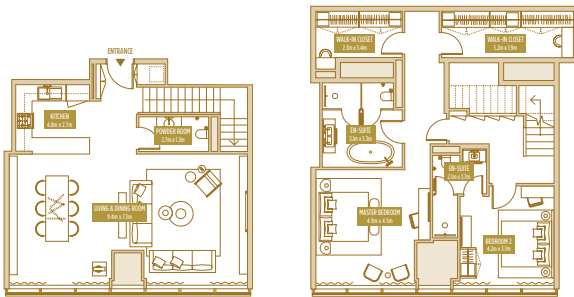
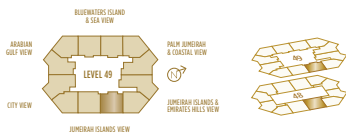
## TYPE 3D 2 BED DUPLEX

UNIT 4909 TOTAL AREA  
189.61 SQ.M. / 2040.96 SQ.FT.

SO'UPTOWN DUBAI  
RESIDENCES

## TYPE 4 2 BED DUPLEX

UNIT 4906 TOTAL AREA  
191.46 SQ.M. / 2060.88 SQ.FT.



Disclaimer: Please note this floor plan is for marketing purposes and is to be used as a guide only. All efforts have been made to ensure its accuracy however changes may be made during the development process and dimensions, fixtures, fittings, finishes and specifications are subject to change without notice. Dimensions may vary.

Disclaimer: Please note this floor plan is for marketing purposes and is to be used as a guide only. All efforts have been made to ensure its accuracy however changes may be made during the development process and dimensions, fixtures, fittings, finishes and specifications are subject to change without notice. Dimensions may vary.