



FLOOR PLAN



EXCLUSIVELINKS
Real Estate Brokers

CEDAR
CREEK BEACH
EMAAR

DUBAI CREEK HARBOUR

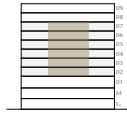
CEDAR CREEK BEACH

BUILDING 1

2 BEDROOM

LEVEL 2-7 UNIT 02

APARTMENT AREA	934.20 SQ.FT.	86.79 SQ.M.
BALCONY AREA	74.70 SQ.FT.	6.94 SQ.M.
TOTAL AREA	1008.90 SQ.FT.	93.73 SQ.M.



FLOOR PLAN 1. All dimensions are in imperial and metric, and measured from finish to finish excluding construction tolerances. 2. All materials, dimensions, and drawings are approximate only. 3. Information is subject to change without notice, at developer's absolute discretion. 4. Actual area may vary from the stated area. 5. Drawings not to scale. 6. All images used are for illustrative purposes only and do not represent the actual size, features, specifications, fittings, and furnishings. 7. The developer reserves the right to make revisions / alterations, at it's absolute discretion, without any liability whatsoever.

EMAAR



FLOOR PLAN



EXCLUSIVELINKS
Real Estate Brokers

CEDAR
CREEK BEACH
EMAAR

DUBAI CREEK HARBOUR

CEDAR

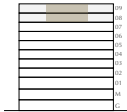
CREEK BEACH

BUILDING 1

2 BEDROOM

LEVEL 8-9 UNIT 02

APARTMENT AREA	934.20 SQ.FT.	86.79 SQ.M.
BALCONY AREA	76.10 SQ.FT.	7.07 SQ.M.
TOTAL AREA	1010.30 SQ.FT.	93.86 SQ.M.



FLOOR PLAN 1. All dimensions are in imperial and metric, and measured from finish to finish excluding construction tolerances. 2. All materials, dimensions, and drawings are approximate only. 3. Information is subject to change without notice, at developer's absolute discretion. 4. Actual area may vary from the stated area. 5. Drawings not to scale. 6. All images used are for illustrative purposes only and do not represent the actual size, features, specifications, fittings, and furnishings. 7. The developer reserves the right to make revisions / alterations, at it's absolute discretion, without any liability whatsoever.

EMAAR



FLOOR PLAN

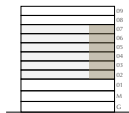


CEDAR
CREEK BEACH
EMAAR

DUBAI CREEK HARBOUR
CEDAR
CREEK BEACH

BUILDING 1
2 BEDROOM
LEVEL 2-7 UNIT 03

APARTMENT AREA	925.91 SQ.FT.	86.02 SQ.M.
BALCONY AREA	71.80 SQ.FT.	6.67 SQ.M.
TOTAL AREA	997.71 SQ.FT.	92.69 SQ.M.



FLOOR PLAN 1. All dimensions are in imperial and metric, and measured from finish to finish excluding construction tolerances. 2. All materials, dimensions, and drawings are approximate only. 3. Information is subject to change without notice, at developer's absolute discretion. 4. Actual area may vary from the stated area. 5. Drawings not to scale. 6. All images used are for illustrative purposes only and do not represent the actual size, features, specifications, fittings, and furnishings. 7. The developer reserves the right to make revisions / alterations, at it's absolute discretion, without any liability whatsoever.

EMAAR



FLOOR PLAN



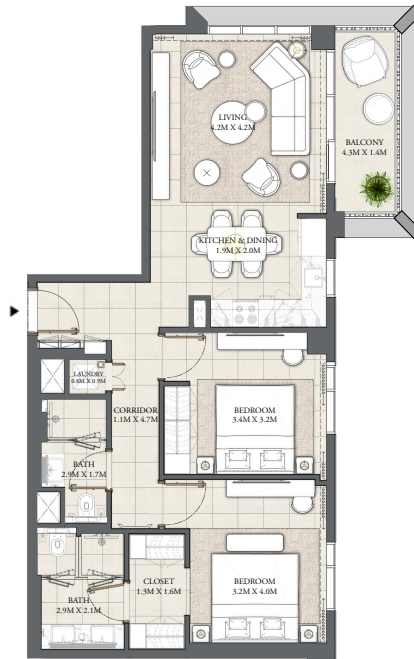
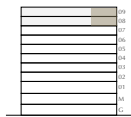
CEDAR
CREEK BEACH
EMAAR

DUBAI CREEK HARBOUR
CEDAR
CREEK BEACH

BUILDING 1
2 BEDROOM

LEVEL 8-9 UNIT 03

APARTMENT AREA	925.91 SQ.FT.	86.02 SQ.M.
BALCONY AREA	76.10 SQ.FT.	7.07 SQ.M.
TOTAL AREA	1002.01 SQ.FT.	93.09 SQ.M.



FLOOR PLAN 1. All dimensions are in imperial and metric, and measured from finish to finish excluding construction tolerances. 2. All materials, dimensions, and drawings are approximate only. 3. Information is subject to change without notice, at developer's absolute discretion. 4. Actual area may vary from the stated area. 5. Drawings not to scale. 6. All images used are for illustrative purposes only and do not represent the actual size, features, specifications, fittings, and furnishings. 7. The developer reserves the right to make revisions / alterations, at it's absolute discretion, without any liability whatsoever.

EMAAR



FLOOR PLAN



CEDAR
CREEK BEACH
EMAAR

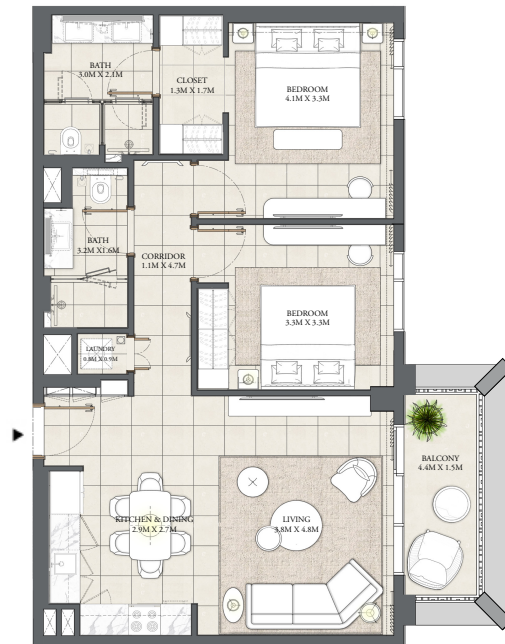
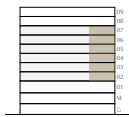
DUBAI CREEK HARBOUR

CEDAR CREEK BEACH

BUILDING 1

2 BEDROOM
LEVEL 2-7 UNIT 04

APARTMENT AREA	934.63 SQ.FT.	86.83 SQ.M.
BALCONY AREA	72.66 SQ.FT.	6.75 SQ.M.
TOTAL AREA	1007.29 SQ.FT.	93.58 SQ.M.



FLOOR PLAN 1. All dimensions are in imperial and metric, and measured from finish to finish excluding construction tolerances. 2. All materials, dimensions, and drawings are approximate only. 3. Information is subject to change without notice, at developer's absolute discretion. 4. Actual area may vary from the stated area. 5. Drawings not to scale. 6. All images used are for illustrative purposes only and do not represent the actual size, features, specifications, fittings, and furnishings. 7. The developer reserves the right to make revisions / alterations, at it's absolute discretion, without any liability whatsoever.

EMAAR



FLOOR PLAN



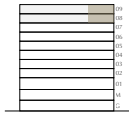
CEDAR
CREEK BEACH
EMAAR

DUBAI CREEK HARBOUR
CEDAR
CREEK BEACH

BUILDING 1
2 BEDROOM

LEVEL 8-9 UNIT 04

APARTMENT AREA	934.63 SQ.FT.	86.83 SQ.M.
BALCONY AREA	77.18 SQ.FT.	7.17 SQ.M.
TOTAL AREA	1011.81 SQ.FT.	94.00 SQ.M.



FLOOR PLAN 1. All dimensions are in imperial and metric, and measured from finish to finish excluding construction tolerances. 2. All materials, dimensions, and drawings are approximate only. 3. Information is subject to change without notice, at developer's absolute discretion. 4. Actual area may vary from the stated area. 5. Drawings not to scale. 6. All images used are for illustrative purposes only and do not represent the actual size, features, specifications, fittings, and furnishings. 7. The developer reserves the right to make revisions / alterations, at it's absolute discretion, without any liability whatsoever.

EMAAR



FLOOR PLAN



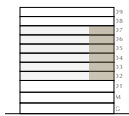
CEDAR
CREEK BEACH
EMAAR

DUBAI CREEK HARBOUR
CEDAR
CREEK BEACH

BUILDING 1
2 BEDROOM

LEVEL 2-7 UNIT 05

APARTMENT AREA	959.28 SQ.FT.	89.12 SQ.M.
BALCONY AREA	71.90 SQ.FT.	6.68 SQ.M.
TOTAL AREA	1031.18 SQ.FT.	95.80 SQ.M.



FLOOR PLAN 1. All dimensions are in imperial and metric, and measured from finish to finish excluding construction tolerances. 2. All materials, dimensions, and drawings are approximate only. 3. Information is subject to change without notice, at developer's absolute discretion. 4. Actual area may vary from the stated area. 5. Drawings not to scale. 6. All images used are for illustrative purposes only and do not represent the actual size, features, specifications, fittings, and furnishings. 7. The developer reserves the right to make revisions / alterations, at it's absolute discretion, without any liability whatsoever.

EMAAR



FLOOR PLAN



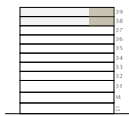
CEDAR
CREEK BEACH
EMAAR

DUBAI CREEK HARBOUR
CEDAR
CREEK BEACH

BUILDING 1
2 BEDROOM

LEVEL 8-9 UNIT 05

APARTMENT AREA	959.28 SQ.FT.	89.12 SQ.M.
BALCONY AREA	76.32 SQ.FT.	7.09 SQ.M.
TOTAL AREA	1035.60 SQ.FT.	96.21 SQ.M.



FLOOR PLAN 1. All dimensions are in imperial and metric, and measured from finish to finish excluding construction tolerances. 2. All materials, dimensions, and drawings are approximate only. 3. Information is subject to change without notice, at developer's absolute discretion. 4. Actual area may vary from the stated area. 5. Drawings not to scale. 6. All images used are for illustrative purposes only and do not represent the actual size, features, specifications, fittings, and furnishings. 7. The developer reserves the right to make revisions / alterations, at it's absolute discretion, without any liability whatsoever.

EMAAR



FLOOR PLAN



CEDAR
CREEK BEACH
EMAAR

DUBAI CREEK HARBOUR
CEDAR
CREEK BEACH
BUILDING 1
1 BEDROOM
LEVEL 2-7 UNIT 06

APARTMENT AREA	629.80 SQ.FT.	58.51 SQ.M.
BALCONY AREA	71.80 SQ.FT.	6.67 SQ.M.
TOTAL AREA	701.60 SQ.FT.	65.18 SQ.M.



FLOOR PLAN 1. All dimensions are in imperial and metric, and measured from finish to finish excluding construction tolerances. 2. All materials, dimensions, and drawings are approximate only. 3. Information is subject to change without notice, at developer's absolute discretion. 4. Actual area may vary from the stated area. 5. Drawings not to scale. 6. All images used are for illustrative purposes only and do not represent the actual size, features, specifications, fittings, and furnishings. 7. The developer reserves the right to make revisions / alterations, at it's absolute discretion, without any liability whatsoever.

EMAAR

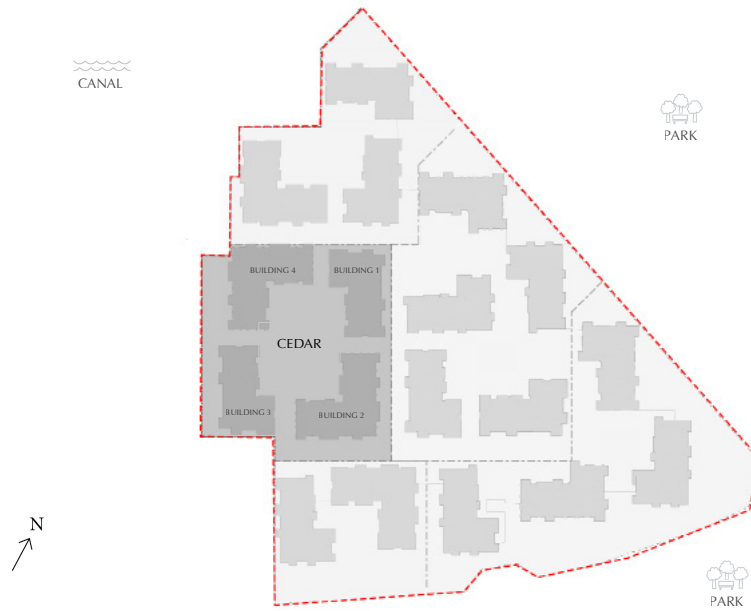


FLOOR PLAN



CEDAR
CREEK BEACH
EMAAR

CREEK BEACH MASSING PLAN



FLOOR PLAN 1. All dimensions are in imperial and metric, and measured from finish to finish excluding construction tolerances. 2. All materials, dimensions, and drawings are approximate only. 3. Information is subject to change without notice, at developer's absolute discretion. 4. Actual area may vary from the stated area. 5. Drawings not to scale. 6. All images used are for illustrative purposes only and do not represent the actual size, features, specifications, fittings, and furnishings. 7. The developer reserves the right to make revisions / alterations, at it's absolute discretion, without any liability whatsoever.

EMAAR

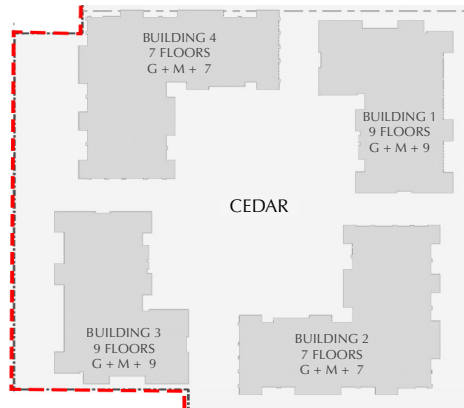


FLOOR PLAN



CEDAR
CREEK BEACH
EMAAR

CEDAR CREEK BEACH MASSING PLAN



FLOOR PLAN 1. All dimensions are in imperial and metric, and measured from finish to finish excluding construction tolerances. 2. All materials, dimensions, and drawings are approximate only. 3. Information is subject to change without notice, at developer's absolute discretion. 4. Actual area may vary from the stated area. 5. Drawings not to scale. 6. All images used are for illustrative purposes only and do not represent the actual size, features, specifications, fittings, and furnishings. 7. The developer reserves the right to make revisions / alterations, at it's absolute discretion, without any liability whatsoever.

EMAAR



FLOOR PLAN



CEDAR
CREEK BEACH
EMAAR

DUBAI CREEK HARBOUR
CEDAR
CREEK BEACH
BUILDING 1
2 BEDROOM

LEVEL 1 UNIT 101

APARTMENT AREA	934.63 SQ.FT.	86.83 SQ.M.
BALCONY AREA	79.76 SQ.FT.	7.41 SQ.M.
TOTAL AREA	1014.39 SQ.FT.	94.24 SQ.M.



FLOOR PLAN 1. All dimensions are in imperial and metric, and measured from finish to finish excluding construction tolerances. 2. All materials, dimensions, and drawings are approximate only. 3. Information is subject to change without notice, at developer's absolute discretion. 4. Actual area may vary from the stated area. 5. Drawings not to scale. 6. All images used are for illustrative purposes only and do not represent the actual size, features, specifications, fittings, and furnishings. 7. The developer reserves the right to make revisions / alterations, at it's absolute discretion, without any liability whatsoever.

EMAAR



FLOOR PLAN



CEDAR
CREEK BEACH
EMAAR

DUBAI CREEK HARBOUR
CEDAR
CREEK BEACH

BUILDING 1
2 BEDROOM

LEVEL 1 UNIT 102

APARTMENT AREA	925.70 SQ.FT.	86.00 SQ.M.
BALCONY AREA	81.27 SQ.FT.	7.55 SQ.M.
TOTAL AREA	1006.97 SQ.FT.	93.55 SQ.M.



FLOOR PLAN 1. All dimensions are in imperial and metric, and measured from finish to finish excluding construction tolerances. 2. All materials, dimensions, and drawings are approximate only. 3. Information is subject to change without notice, at developer's absolute discretion. 4. Actual area may vary from the stated area. 5. Drawings not to scale. 6. All images used are for illustrative purposes only and do not represent the actual size, features, specifications, fittings, and furnishings. 7. The developer reserves the right to make revisions / alterations, at it's absolute discretion, without any liability whatsoever.

EMAAR



FLOOR PLAN



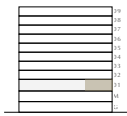
CEDAR
CREEK BEACH
EMAAR

DUBAI CREEK HARBOUR
CEDAR
CREEK BEACH

BUILDING 1
1 BEDROOM

LEVEL 1 UNIT 103

APARTMENT AREA	625.71 SQ.FT.	58.13 SQ.M.
BALCONY AREA	90.31 SQ.FT.	8.39 SQ.M.
TOTAL AREA	716.02 SQ.FT.	66.52 SQ.M.



FLOOR PLAN 1. All dimensions are in imperial and metric, and measured from finish to finish excluding construction tolerances. 2. All materials, dimensions, and drawings are approximate only. 3. Information is subject to change without notice, at developer's absolute discretion. 4. Actual area may vary from the stated area. 5. Drawings not to scale. 6. All images used are for illustrative purposes only and do not represent the actual size, features, specifications, fittings, and furnishings. 7. The developer reserves the right to make revisions / alterations, at it's absolute discretion, without any liability whatsoever.

EMAAR



FLOOR PLAN



CEDAR
CREEK BEACH
EMAAR

DUBAI CREEK HARBOUR
CEDAR
CREEK BEACH

BUILDING 1
1 BEDROOM

LEVEL 1 UNIT 104

APARTMENT AREA	624.74 SQ.FT.	58.04 SQ.M.
BALCONY AREA	83.10 SQ.FT.	7.72 SQ.M.
TOTAL AREA	707.84 SQ.FT.	65.76 SQ.M.



FLOOR PLAN 1. All dimensions are in imperial and metric, and measured from finish to finish excluding construction tolerances. 2. All materials, dimensions, and drawings are approximate only. 3. Information is subject to change without notice, at developer's absolute discretion. 4. Actual area may vary from the stated area. 5. Drawings not to scale. 6. All images used are for illustrative purposes only and do not represent the actual size, features, specifications, fittings, and furnishings. 7. The developer reserves the right to make revisions / alterations, at it's absolute discretion, without any liability whatsoever.

EMAAR



FLOOR PLAN



CEDAR
CREEK BEACH
EMAAR

DUBAI CREEK HARBOUR

CEDAR

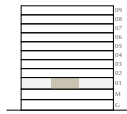
CREEK BEACH

BUILDING 1

1 BEDROOM

LEVEL 1 UNIT 105

APARTMENT AREA	635.29 SQ.FT.	59.02 SQ.M.
BALCONY AREA	85.03 SQ.FT.	7.90 SQ.M.
TOTAL AREA	720.32 SQ.FT.	66.92 SQ.M.



FLOOR PLAN 1. All dimensions are in imperial and metric, and measured from finish to finish excluding construction tolerances. 2. All materials, dimensions, and drawings are approximate only. 3. Information is subject to change without notice, at developer's absolute discretion. 4. Actual area may vary from the stated area. 5. Drawings not to scale. 6. All images used are for illustrative purposes only and do not represent the actual size, features, specifications, fittings, and furnishings. 7. The developer reserves the right to make revisions / alterations, at it's absolute discretion, without any liability whatsoever.

EMAAR



FLOOR PLAN



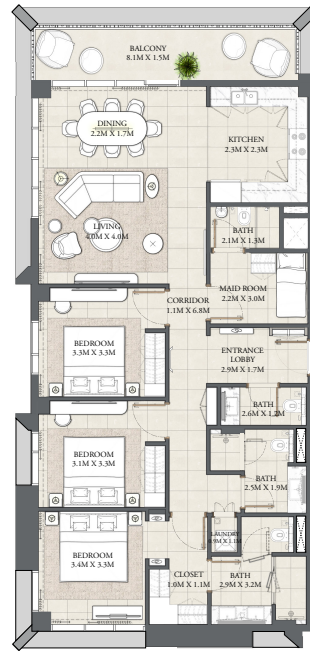
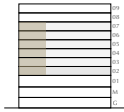
CEDAR
CREEK BEACH
EMAAR

DUBAI CREEK HARBOUR
CEDAR
CREEK BEACH

BUILDING 1
3 BEDROOM

LEVEL 2-7 UNIT 01

APARTMENT AREA	1439.67 SQ.FT.	133.75 SQ.M.
BALCONY AREA	137.89 SQ.FT.	12.81 SQ.M.
TOTAL AREA	1577.56 SQ.FT.	146.56 SQ.M.



FLOOR PLAN 1. All dimensions are in imperial and metric, and measured from finish to finish excluding construction tolerances. 2. All materials, dimensions, and drawings are approximate only. 3. Information is subject to change without notice, at developer's absolute discretion. 4. Actual area may vary from the stated area. 5. Drawings not to scale. 6. All images used are for illustrative purposes only and do not represent the actual size, features, specifications, fittings, and furnishings. 7. The developer reserves the right to make revisions / alterations, at it's absolute discretion, without any liability whatsoever.

EMAAR



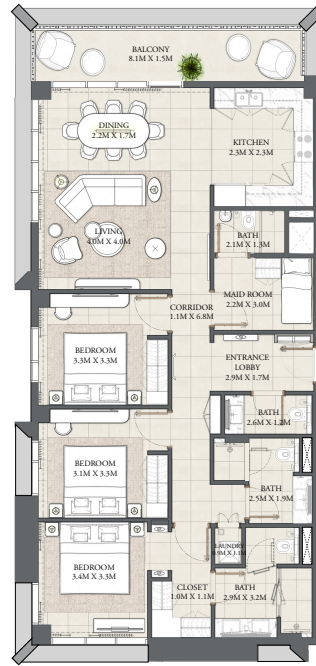
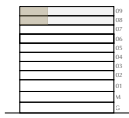
FLOOR PLAN



CEDAR
CREEK BEACH
EMAAR

DUBAI CREEK HARBOUR
CEDAR
CREEK BEACH
BUILDING 1
3 BEDROOM
LEVEL 8-9 UNIT 01

APARTMENT AREA	1439.67 SQ.FT.	133.75 SQ.M.
BALCONY AREA	140.58 SQ.FT.	13.06 SQ.M.
TOTAL AREA	1580.25 SQ.FT.	146.81 SQ.M.



FLOOR PLAN 1. All dimensions are in imperial and metric, and measured from finish to finish excluding construction tolerances. 2. All materials, dimensions, and drawings are approximate only. 3. Information is subject to change without notice, at developer's absolute discretion. 4. Actual area may vary from the stated area. 5. Drawings not to scale. 6. All images used are for illustrative purposes only and do not represent the actual size, features, specifications, fittings, and furnishings. 7. The developer reserves the right to make revisions / alterations, at its absolute discretion, without any liability whatsoever.

EMAAR



FLOOR PLAN



CEDAR
CREEK BEACH
EMAAR

DUBAI CREEK HARBOUR
CEDAR
CREEK BEACH

BUILDING 2
1 BEDROOM

LEVEL 1 UNIT 108

APARTMENT AREA	610.21 SQ.FT.	56.69 SQ.M.
BALCONY AREA	66.74 SQ.FT.	6.20 SQ.M.
TOTAL AREA	676.95 SQ.FT.	62.89 SQ.M.



FLOOR PLAN 1. All dimensions are in imperial and metric, and measured from finish to finish excluding construction tolerances. 2. All materials, dimensions, and drawings are approximate only. 3. Information is subject to change without notice, at developer's absolute discretion. 4. Actual area may vary from the stated area. 5. Drawings not to scale. 6. All images used are for illustrative purposes only and do not represent the actual size, features, specifications, fittings, and furnishings. 7. The developer reserves the right to make revisions / alterations, at it's absolute discretion, without any liability whatsoever.

EMAAR



FLOOR PLAN



CEDAR
CREEK BEACH
EMAAR

DUBAI CREEK HARBOUR
CEDAR
CREEK BEACH
BUILDING 2
1 BEDROOM

LEVEL 1 UNIT 109

APARTMENT AREA	555.09 SQ.FT.	51.57 SQ.M.
BALCONY AREA	64.37 SQ.FT.	5.98 SQ.M.
TOTAL AREA	619.46 SQ.FT.	57.55 SQ.M.



FLOOR PLAN 1. All dimensions are in imperial and metric, and measured from finish to finish excluding construction tolerances. 2. All materials, dimensions, and drawings are approximate only. 3. Information is subject to change without notice, at developer's absolute discretion. 4. Actual area may vary from the stated area. 5. Drawings not to scale. 6. All images used are for illustrative purposes only and do not represent the actual size, features, specifications, fittings, and furnishings. 7. The developer reserves the right to make revisions / alterations, at it's absolute discretion, without any liability whatsoever.

EMAAR



FLOOR PLAN



EXCLUSIVELINKS
Real Estate Brokers

CEDAR
CREEK BEACH
EMAAR

DUBAI CREEK HARBOUR

CEDAR CREEK BEACH

BUILDING 2

1 BEDROOM

LEVEL 1 UNIT 110

APARTMENT AREA	591.37 SQ.FT.	54.94 SQ.M.
BALCONY AREA	64.69 SQ.FT.	6.01 SQ.M.
TOTAL AREA	656.06 SQ.FT.	60.95 SQ.M.



FLOOR PLAN 1. All dimensions are in imperial and metric, and measured from finish to finish excluding construction tolerances. 2. All materials, dimensions, and drawings are approximate only. 3. Information is subject to change without notice, at developer's absolute discretion. 4. Actual area may vary from the stated area. 5. Drawings not to scale. 6. All images used are for illustrative purposes only and do not represent the actual size, features, specifications, fittings, and furnishings. 7. The developer reserves the right to make revisions / alterations, at it's absolute discretion, without any liability whatsoever.

EMAAR



FLOOR PLAN



CEDAR
CREEK BEACH
EMAAR

DUBAI CREEK HARBOUR
CEDAR
CREEK BEACH

BUILDING 2
1 BEDROOM
LEVEL 1 UNIT 111

APARTMENT AREA	590.94 SQ.FT.	54.90 SQ.M.
BALCONY AREA	74.49 SQ.FT.	6.92 SQ.M.
TOTAL AREA	665.43 SQ.FT.	61.82 SQ.M.



FLOOR PLAN 1. All dimensions are in imperial and metric, and measured from finish to finish excluding construction tolerances. 2. All materials, dimensions, and drawings are approximate only. 3. Information is subject to change without notice, at developer's absolute discretion. 4. Actual area may vary from the stated area. 5. Drawings not to scale. 6. All images used are for illustrative purposes only and do not represent the actual size, features, specifications, fittings, and furnishings. 7. The developer reserves the right to make revisions / alterations, at it's absolute discretion, without any liability whatsoever.

EMAAR



FLOOR PLAN



EXCLUSIVELINKS
Real Estate Brokers

CEDAR
CREEK BEACH
EMAAR

DUBAI CREEK HARBOUR

CEDAR

CREEK BEACH

BUILDING 2

1 BEDROOM

LEVEL 1 UNIT 112

APARTMENT AREA	588.03 SQ.FT.	54.63 SQ.M.
BALCONY AREA	75.67 SQ.FT.	7.03 SQ.M.
TOTAL AREA	663.70 SQ.FT.	61.66 SQ.M.



FLOOR PLAN 1. All dimensions are in imperial and metric, and measured from finish to finish excluding construction tolerances. 2. All materials, dimensions, and drawings are approximate only. 3. Information is subject to change without notice, at developer's absolute discretion. 4. Actual area may vary from the stated area. 5. Drawings not to scale. 6. All images used are for illustrative purposes only and do not represent the actual size, features, specifications, fittings, and furnishings. 7. The developer reserves the right to make revisions / alterations, at it's absolute discretion, without any liability whatsoever.

EMAAR



FLOOR PLAN



CEDAR
CREEK BEACH
EMAAR

DUBAI CREEK HARBOUR
CEDAR
CREEK BEACH

BUILDING 2
1 BEDROOM
LEVEL 1 UNIT 113

APARTMENT AREA	552.62 SQ.FT.	51.34 SQ.M.
BALCONY AREA	64.37 SQ.FT.	5.98 SQ.M.
TOTAL AREA	616.99 SQ.FT.	57.32 SQ.M.



FLOOR PLAN 1. All dimensions are in imperial and metric, and measured from finish to finish excluding construction tolerances. 2. All materials, dimensions, and drawings are approximate only. 3. Information is subject to change without notice, at developer's absolute discretion. 4. Actual area may vary from the stated area. 5. Drawings not to scale. 6. All images used are for illustrative purposes only and do not represent the actual size, features, specifications, fittings, and furnishings. 7. The developer reserves the right to make revisions / alterations, at it's absolute discretion, without any liability whatsoever.

EMAAR



FLOOR PLAN



CEDAR
CREEK BEACH
EMAAR

DUBAI CREEK HARBOUR

CEDAR CREEK BEACH

BUILDING 2

1 BEDROOM

LEVEL 2-7 UNIT 01

APARTMENT AREA	599.01 SQ.FT.	55.65 SQ.M.
BALCONY AREA	65.12 SQ.FT.	6.05 SQ.M.
TOTAL AREA	664.13 SQ.FT.	61.70 SQ.M.



FLOOR PLAN 1. All dimensions are in imperial and metric, and measured from finish to finish excluding construction tolerances. 2. All materials, dimensions, and drawings are approximate only. 3. Information is subject to change without notice, at developer's absolute discretion. 4. Actual area may vary from the stated area. 5. Drawings not to scale. 6. All images used are for illustrative purposes only and do not represent the actual size, features, specifications, fittings, and furnishings. 7. The developer reserves the right to make revisions / alterations, at it's absolute discretion, without any liability whatsoever.

EMAAR



FLOOR PLAN



CEDAR
CREEK BEACH
EMAAR

DUBAI CREEK HARBOUR
CEDAR
CREEK BEACH

BUILDING 2
2 BEDROOM
LEVEL 2-7 UNIT 02

APARTMENT AREA	939.80 SQ.FT.	87.31 SQ.M.
BALCONY AREA	75.67 SQ.FT.	7.03 SQ.M.
TOTAL AREA	1015.47 SQ.FT.	94.34 SQ.M.



FLOOR PLAN 1. All dimensions are in imperial and metric, and measured from finish to finish excluding construction tolerances. 2. All materials, dimensions, and drawings are approximate only. 3. Information is subject to change without notice, at developer's absolute discretion. 4. Actual area may vary from the stated area. 5. Drawings not to scale. 6. All images used are for illustrative purposes only and do not represent the actual size, features, specifications, fittings, and furnishings. 7. The developer reserves the right to make revisions / alterations, at it's absolute discretion, without any liability whatsoever.

EMAAR



FLOOR PLAN



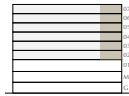
CEDAR
CREEK BEACH
EMAAR

DUBAI CREEK HARBOUR
CEDAR
CREEK BEACH

BUILDING 2
2 BEDROOM

LEVEL 2-7 UNIT 03

APARTMENT AREA	905.89 SQ.FT.	84.16 SQ.M.
BALCONY AREA	75.67 SQ.FT.	7.03 SQ.M.
TOTAL AREA	981.56 SQ.FT.	91.19 SQ.M.



FLOOR PLAN 1. All dimensions are in imperial and metric, and measured from finish to finish excluding construction tolerances. 2. All materials, dimensions, and drawings are approximate only. 3. Information is subject to change without notice, at developer's absolute discretion. 4. Actual area may vary from the stated area. 5. Drawings not to scale. 6. All images used are for illustrative purposes only and do not represent the actual size, features, specifications, fittings, and furnishings. 7. The developer reserves the right to make revisions / alterations, at it's absolute discretion, without any liability whatsoever.

EMAAR

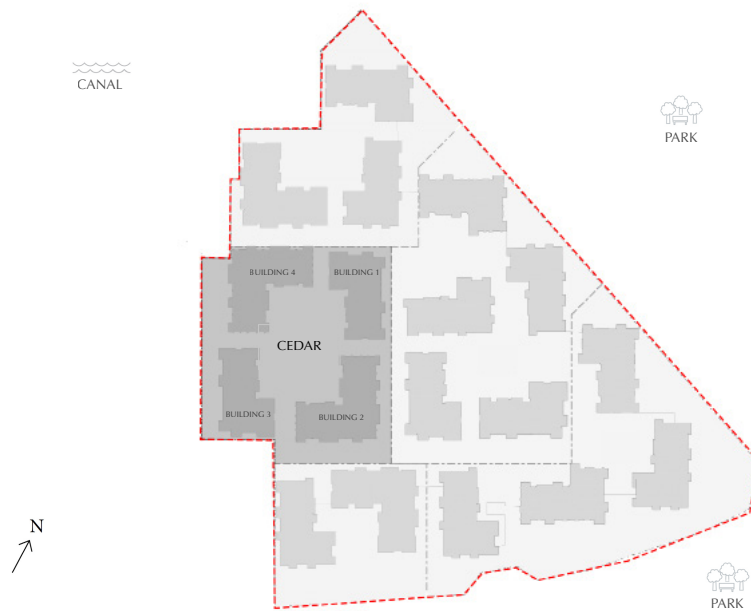


FLOOR PLAN



CEDAR
CREEK BEACH
EMAAR

CREEK BEACH MASSING PLAN



FLOOR PLAN 1. All dimensions are in imperial and metric, and measured from finish to finish excluding construction tolerances. 2. All materials, dimensions, and drawings are approximate only. 3. Information is subject to change without notice, at developer's absolute discretion. 4. Actual area may vary from the stated area. 5. Drawings not to scale. 6. All images used are for illustrative purposes only and do not represent the actual size, features, specifications, fittings, and furnishings. 7. The developer reserves the right to make revisions / alterations, at it's absolute discretion, without any liability whatsoever.

EMAAR



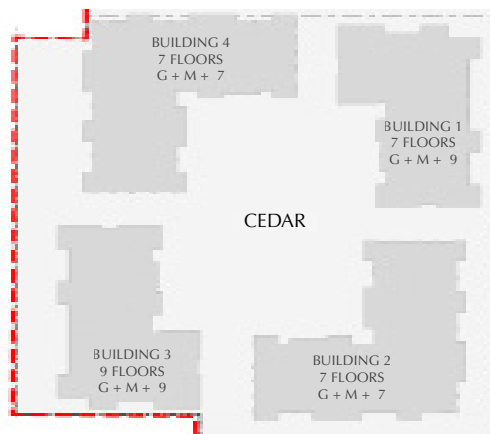
FLOOR PLAN



CEDAR
CREEK BEACH
EMAAR

CEDAR CREEK BEACH MASSING PLAN

CANAL



FLOOR PLAN 1. All dimensions are in imperial and metric, and measured from finish to finish excluding construction tolerances. 2. All materials, dimensions, and drawings are approximate only. 3. Information is subject to change without notice, at developer's absolute discretion. 4. Actual area may vary from the stated area. 5. Drawings not to scale. 6. All images used are for illustrative purposes only and do not represent the actual size, features, specifications, fittings, and furnishings. 7. The developer reserves the right to make revisions / alterations, at it's absolute discretion, without any liability whatsoever.

EMAAR



FLOOR PLAN



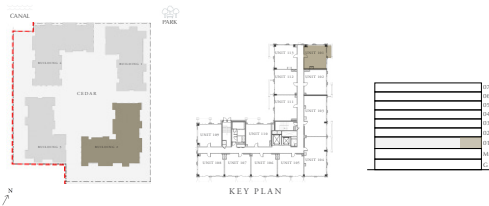
CEDAR
CREEK BEACH
EMAAR

DUBAI CREEK HARBOUR
CEDAR
CREEK BEACH

BUILDING 2
1 BEDROOM

LEVEL 1 UNIT 101

APARTMENT AREA	548.31 SQ.FT.	50.94 SQ.M.
BALCONY AREA	64.37 SQ.FT.	5.98 SQ.M.
TOTAL AREA	612.68 SQ.FT.	56.92 SQ.M.



FLOOR PLAN 1. All dimensions are in imperial and metric, and measured from finish to finish excluding construction tolerances. 2. All materials, dimensions, and drawings are approximate only. 3. Information is subject to change without notice, at developer's absolute discretion. 4. Actual area may vary from the stated area. 5. Drawings not to scale. 6. All images used are for illustrative purposes only and do not represent the actual size, features, specifications, fittings, and furnishings. 7. The developer reserves the right to make revisions / alterations, at it's absolute discretion, without any liability whatsoever.

EMAAR