

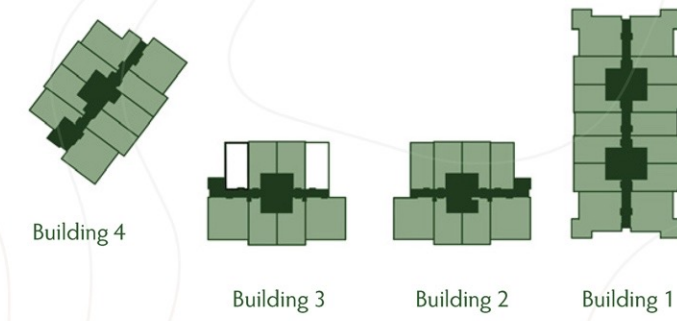


FLOOR PLAN



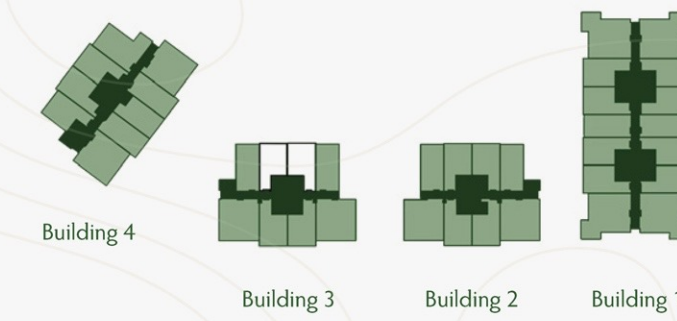
STUDIO TYPE A-3A

TOTAL AREA (GSA) 59.4M²



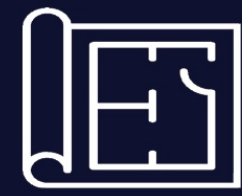
STUDIO TYPE B-1D

TOTAL AREA (GSA) 61.0M²



DISCLAIMER: Note that this floor plan was produced prior to the completion of construction and is indicative only and not to scale. Changes may be made during the development and areas, fittings, finishes and specifications are subject to change without notice in accordance with the provision of the contract of sale. The wardrobe and furniture depicted are not included with any sale and should not be taken to indicate the final positions of power points, TV connections and the like. Prospective purchasers must rely on their own enquiries. Bulkheads necessary for services and structure are not depicted.



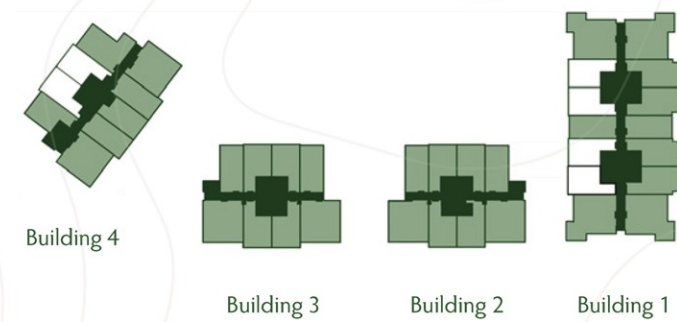
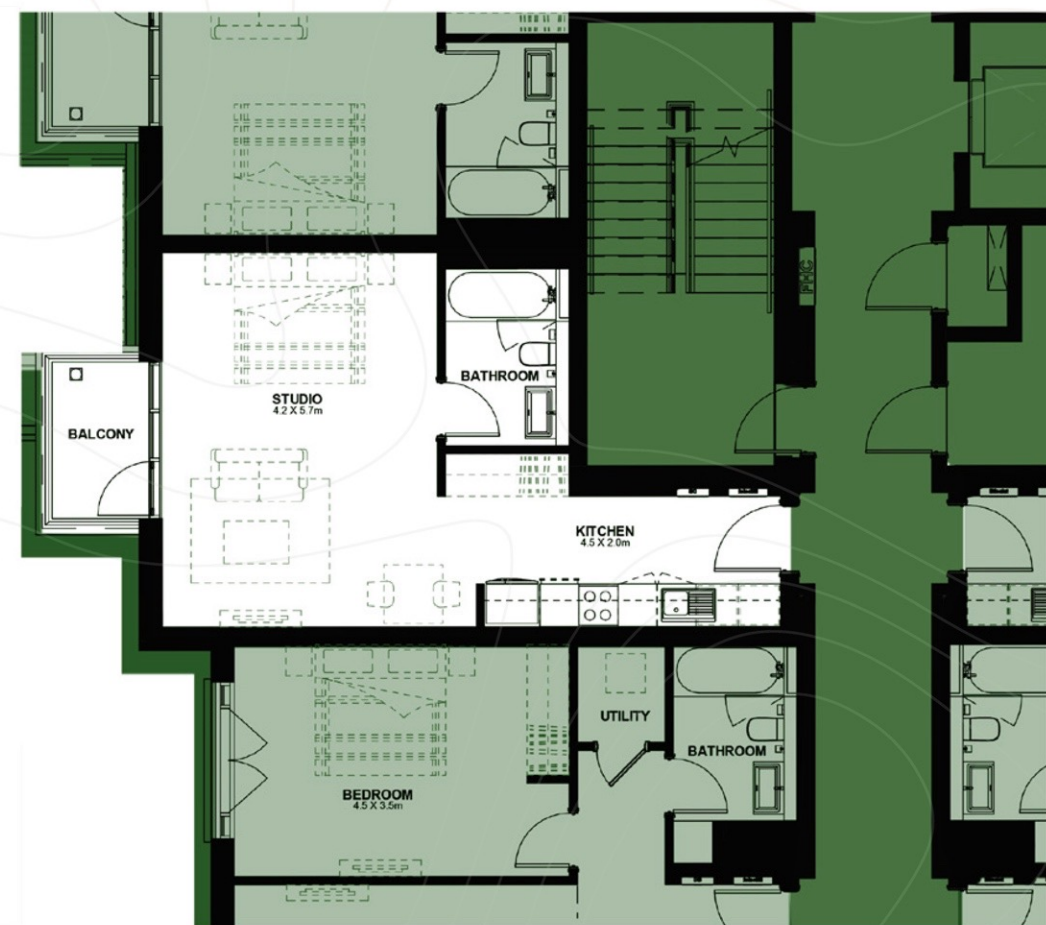


FLOOR PLAN



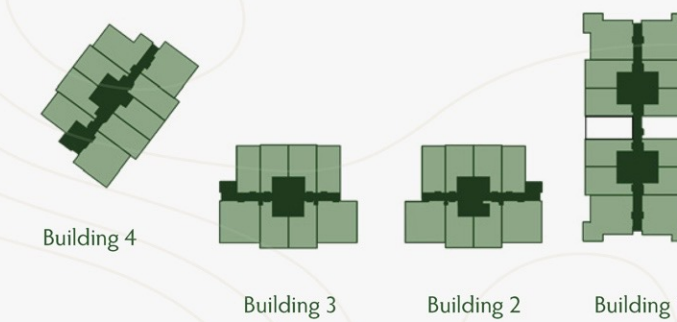
STUDIO TYPE B-4

TOTAL AREA (GSA) 47.4M²



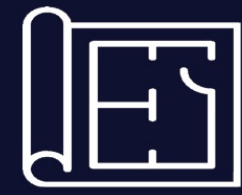
STUDIO TYPE A-1

TOTAL AREA (GSA) 43.4M²



DISCLAIMER: Note that this floor plan was produced prior to the completion of construction and is indicative only and not to scale. Changes may be made during the development and areas, fittings, finishes and specifications are subject to change without notice in accordance with the provision of the contract of sale. The wardrobe and furniture depicted are not included with any sale and should not be taken to indicate the final positions of power points, TV connections and the like. Prospective purchasers must rely on their own enquiries. Bulkheads necessary for services and structure are not depicted.



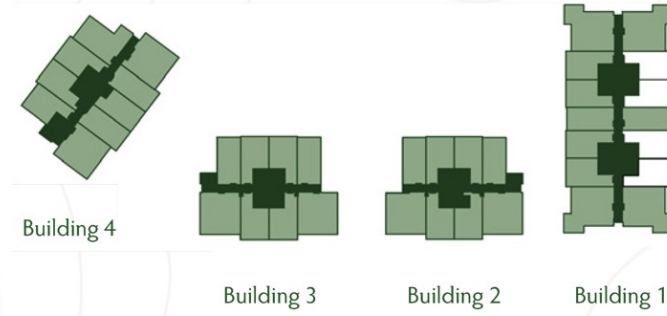


FLOOR PLAN



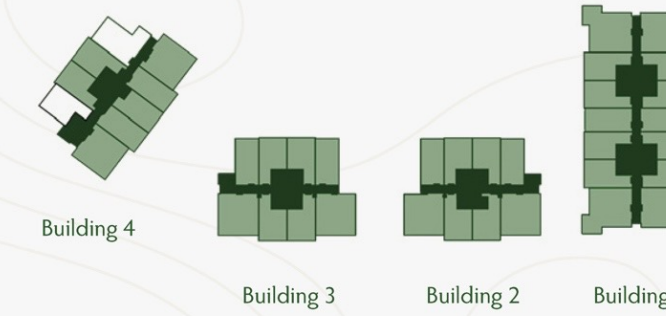
STUDIO TYPE B-3

TOTAL AREA (GSA) 54.3M²



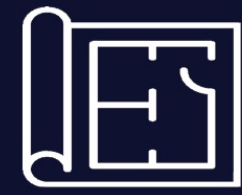
STUDIO TYPE B-5

TOTAL AREA (GSA) 46.6M²



DISCLAIMER: Note that this floor plan was produced prior to the completion of construction and is indicative only and not to scale. Changes may be made during the development and areas, fittings, finishes and specifications are subject to change without notice in accordance with the provision of the contract of sale. The wardrobe and furniture depicted are not included with any sale and should not be taken to indicate the final positions of power points, TV connections and the like. Prospective purchasers must rely on their own enquiries. Bulkheads necessary for services and structure are not depicted.



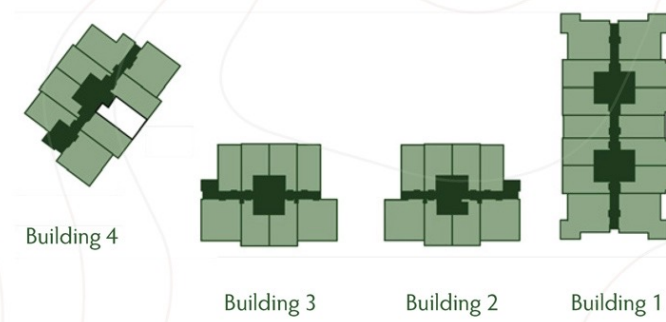


FLOOR PLAN



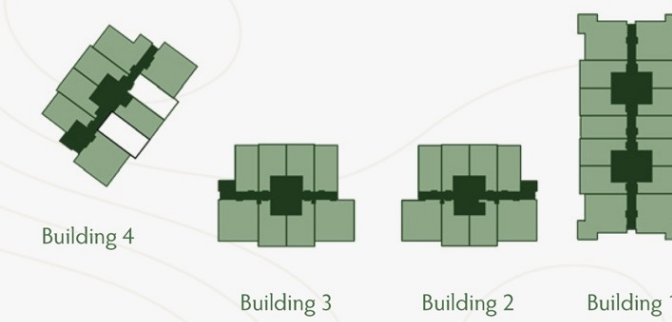
STUDIO TYPE D-1

TOTAL AREA (GSA) 42.34M²

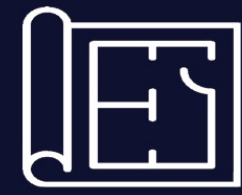


STUDIO TYPE A-4

TOTAL AREA (GSA) 50.8M²



DISCLAIMER: Note that this floor plan was produced prior to the completion of construction and is indicative only and not to scale. Changes may be made during the development and areas, fittings, finishes and specifications are subject to change without notice in accordance with the provision of the contract of sale. The wardrobe and furniture depicted are not included with any sale and should not be taken to indicate the final positions of power points, TV connections and the like. Prospective purchasers must rely on their own enquiries. Bulkheads necessary for services and structure are not depicted.

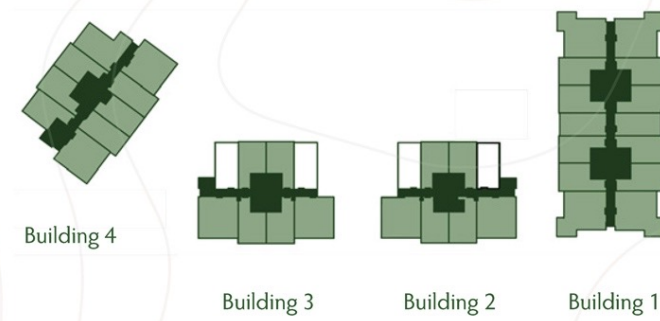


FLOOR PLAN



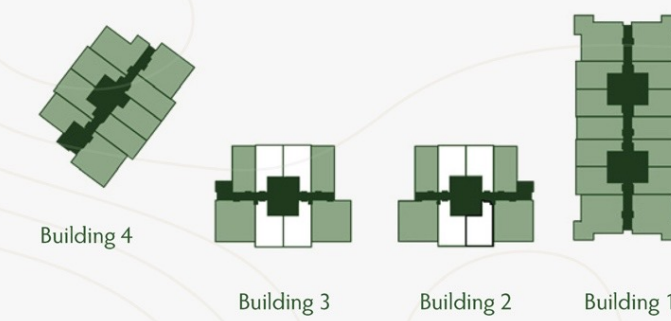
STUDIO TYPE A-3

TOTAL AREA (GSA) 48.4M²



STUDIO TYPE B-1

TOTAL AREA (GSA) 42.1M²



DISCLAIMER: Note that this floor plan was produced prior to the completion of construction and is indicative only and not to scale. Changes may be made during the development and areas, fittings, finishes and specifications are subject to change without notice in accordance with the provision of the contract of sale. The wardrobe and furniture depicted are not included with any sale and should not be taken to indicate the final positions of power points, TV connections and the like. Prospective purchasers must rely on their own enquiries. Bulkheads necessary for services and structure are not depicted.



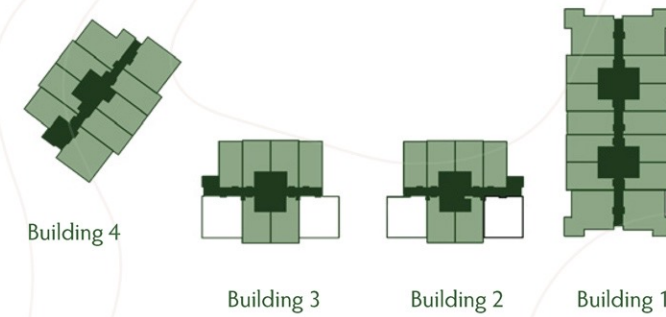


FLOOR PLAN



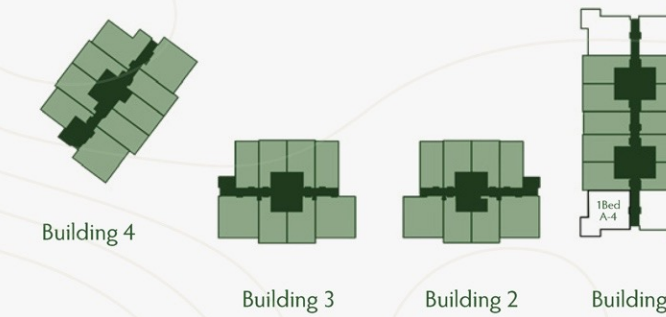
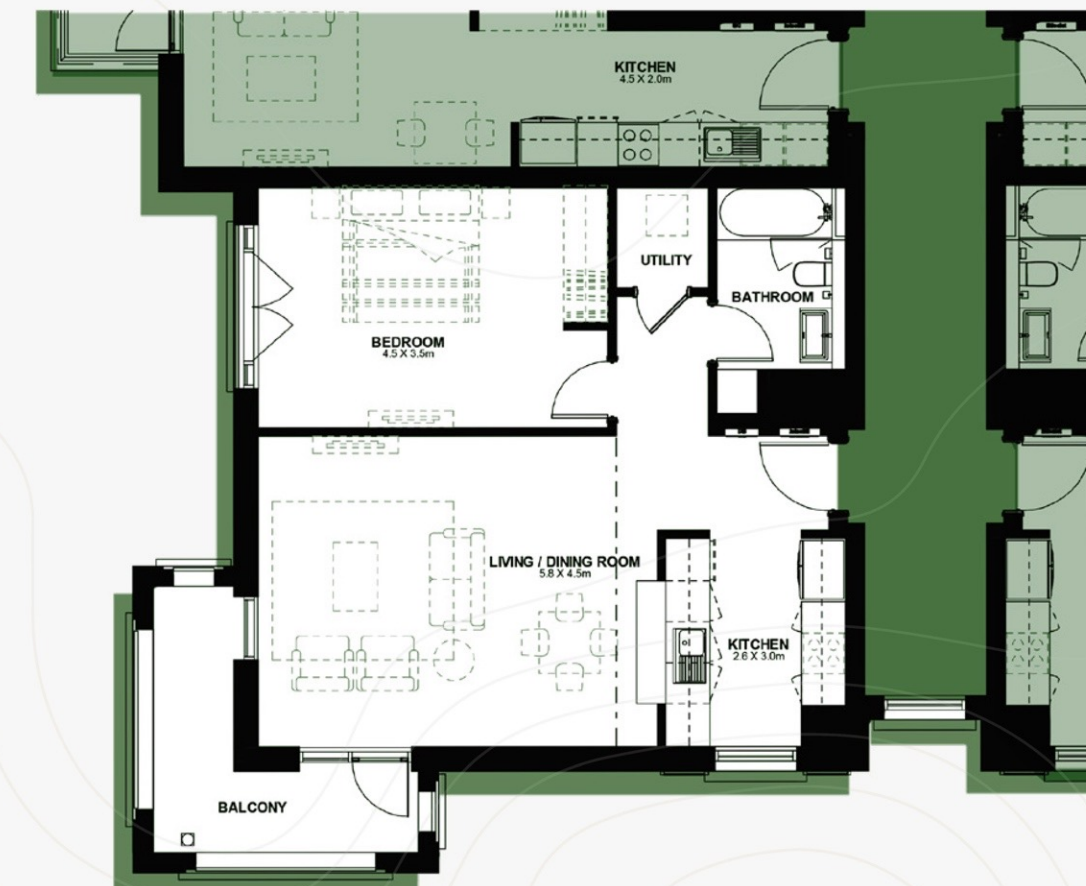
1 BEDROOM TYPE A-3

TOTAL AREA (GSA) 74.1M²

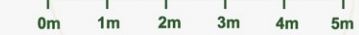


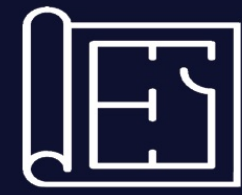
1 BEDROOM TYPE A-4

TOTAL AREA (GSA) 82.6M²



DISCLAIMER: Note that this floor plan was produced prior to the completion of construction and is indicative only and not to scale. Changes may be made during the development and areas, fittings, finishes and specifications are subject to change without notice in accordance with the provision of the contract of sale. The wardrobe and furniture depicted are not included with any sale and should not be taken to indicate the final positions of power points, TV connections and the like. Prospective purchasers must rely on their own enquiries. Bulkheads necessary for services and structure are not depicted.



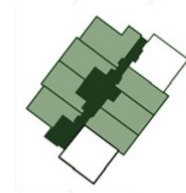


FLOOR PLAN

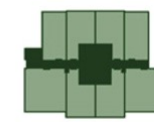


1 BEDROOM TYPE F-1

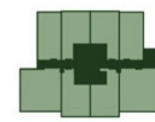
TOTAL AREA (GSA) 71.6M²



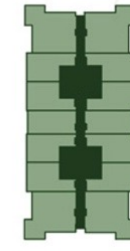
Building 4



Building 3

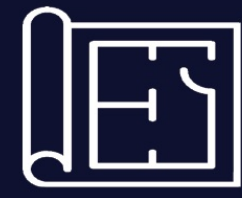


Building 2



Building 1

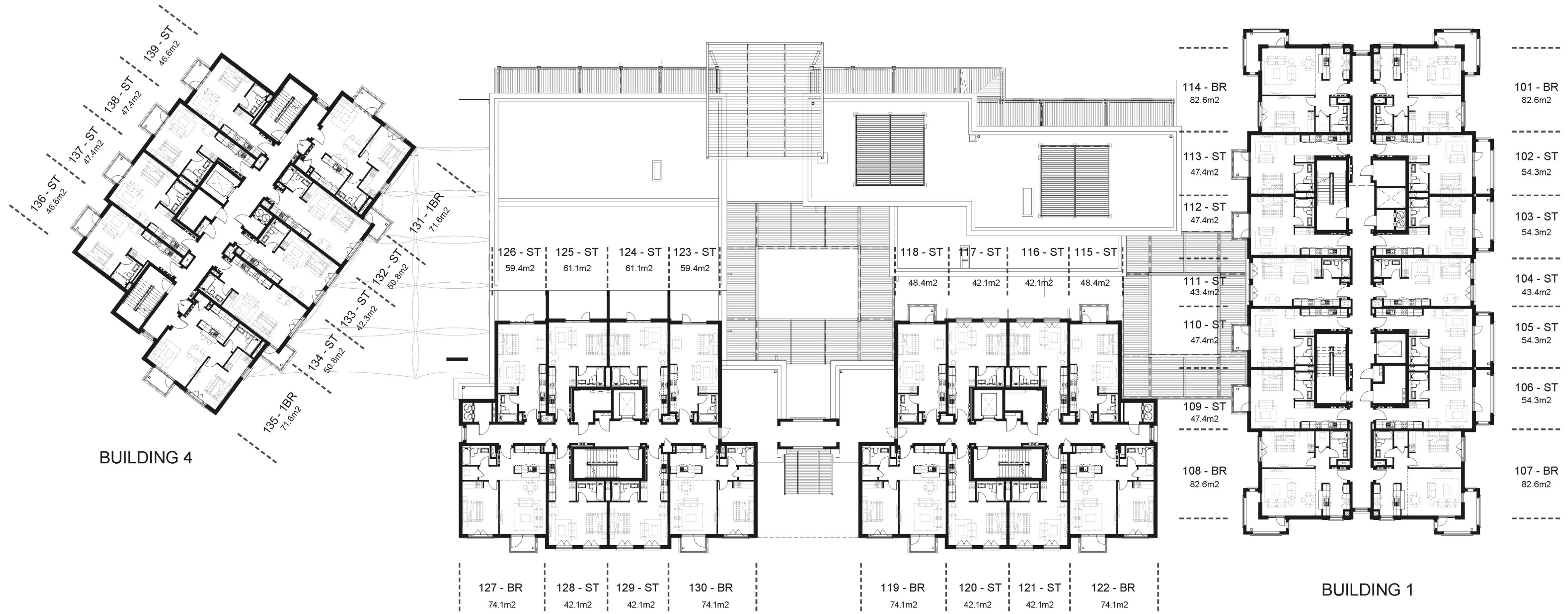
DISCLAIMER: Note that this floor plan was produced prior to the completion of construction and is indicative only and not to scale. Changes may be made during the development and areas, fittings, finishes and specifications are subject to change without notice in accordance with the provision of the contract of sale. The wardrobe and furniture depicted are not included with any sale and should not be taken to indicate the final positions of power points, TV connections and the like. Prospective purchasers must rely on their own enquiries. Bulkheads necessary for services and structure are not depicted.

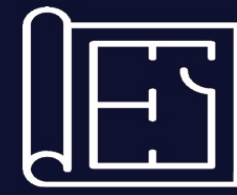


FLOOR PLAN



LEVEL 1

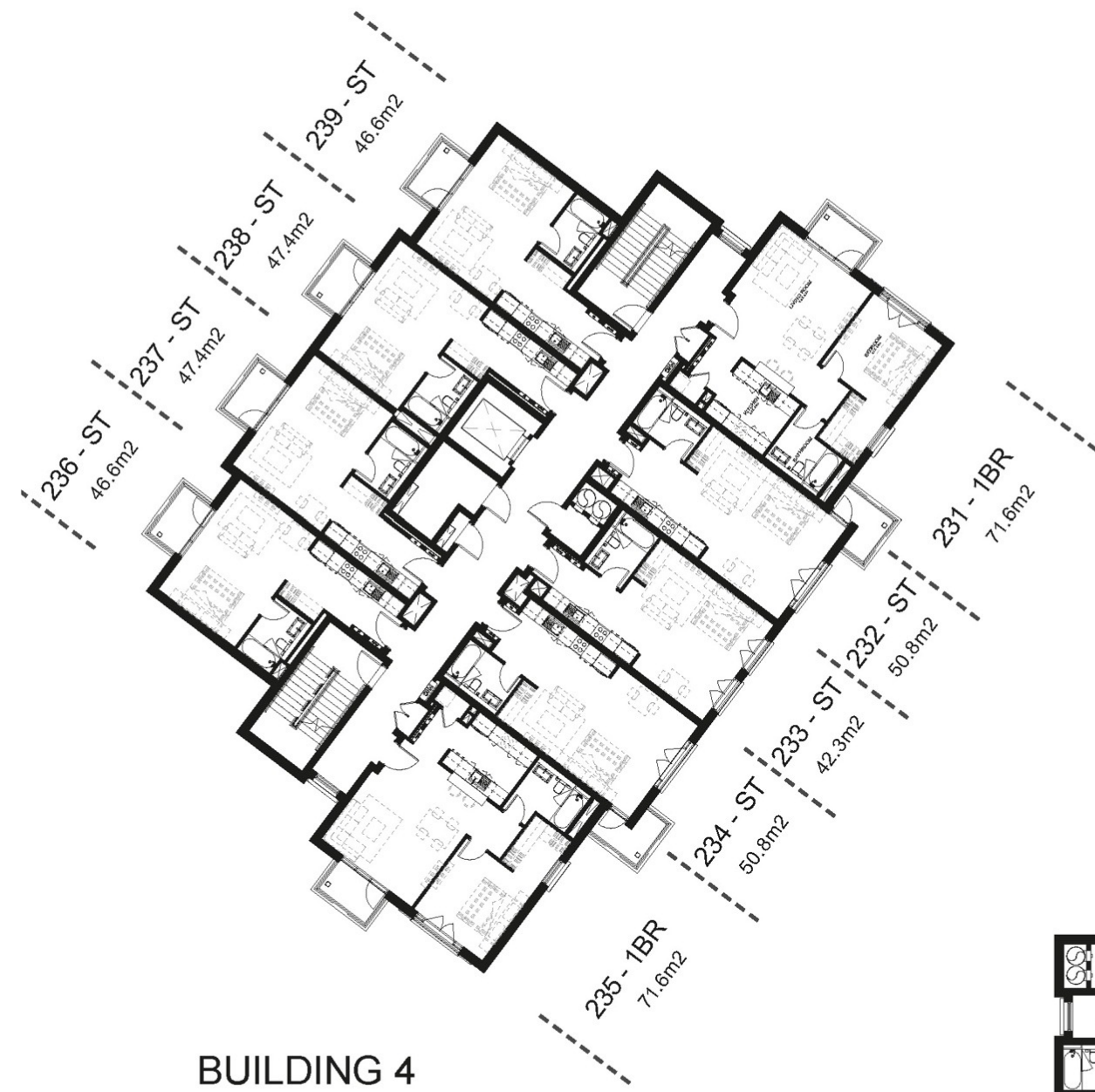




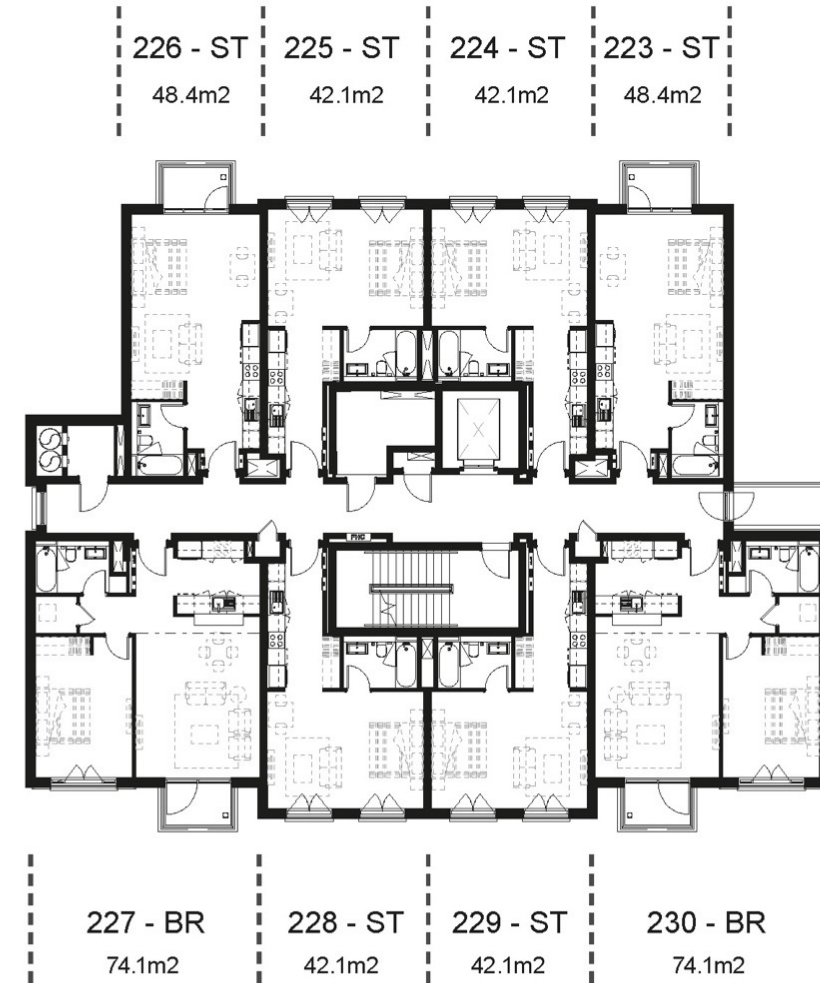
FLOOR PLAN



LEVEL 2



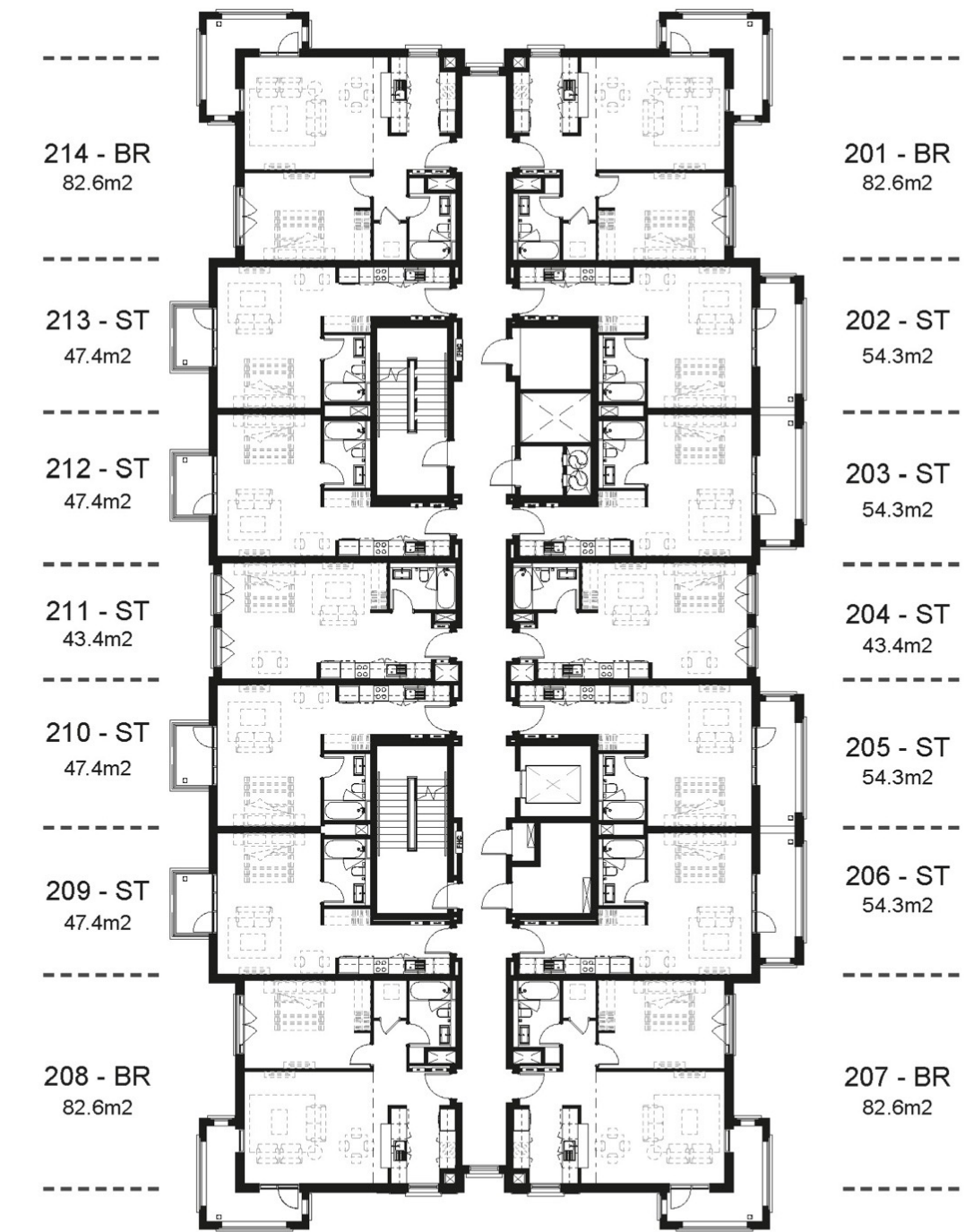
BUILDING 4



BUILDING 3



BUILDING 2



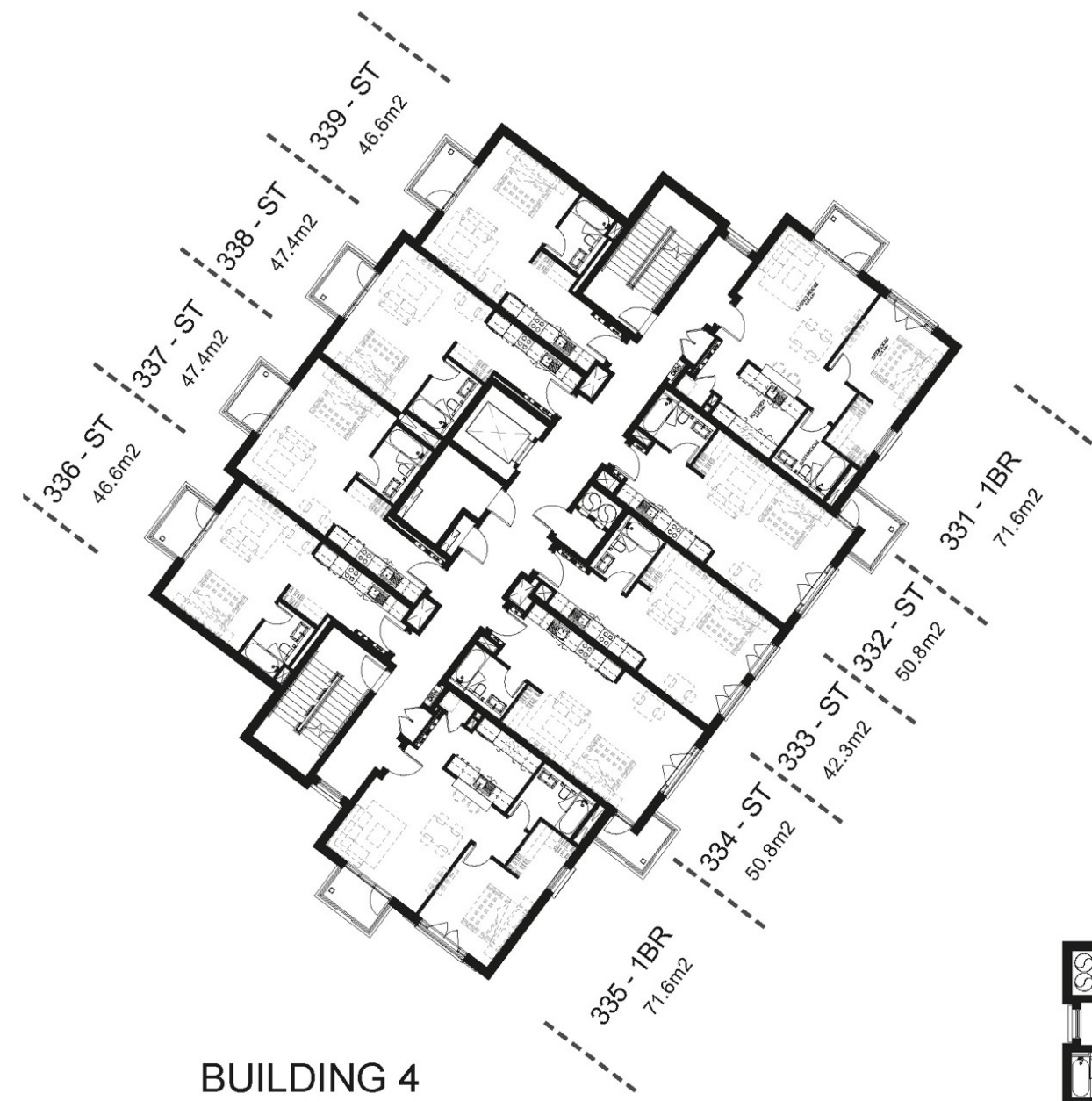
BUILDING 1



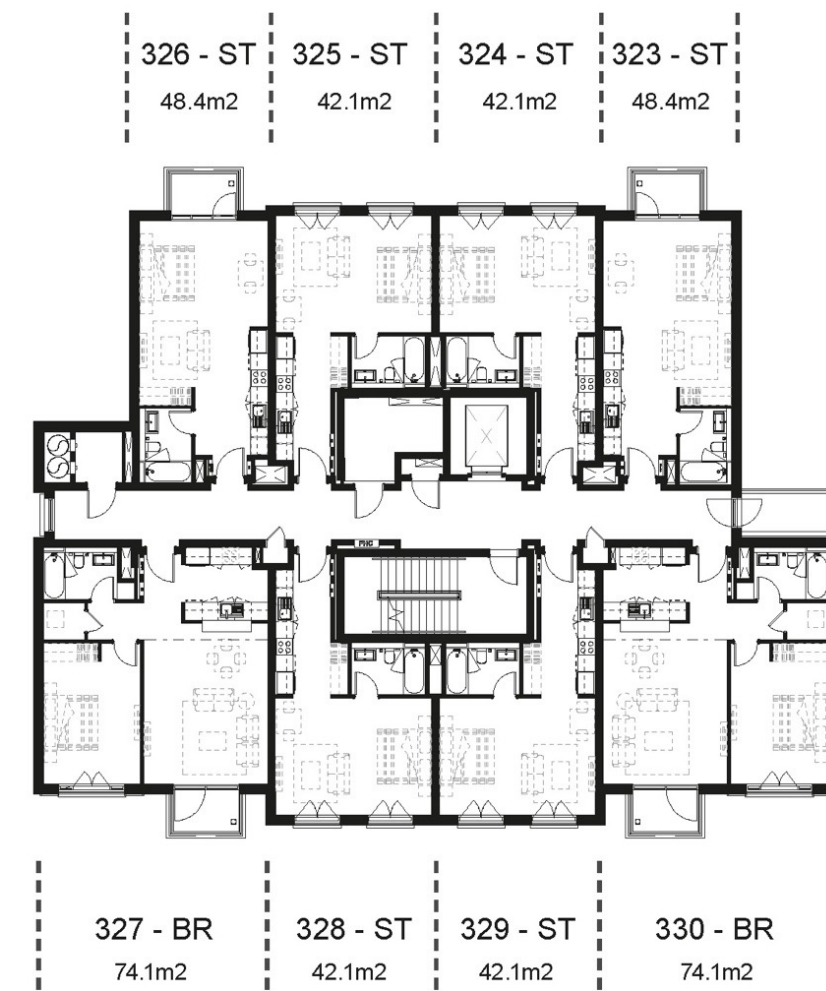
FLOOR PLAN



LEVEL 3



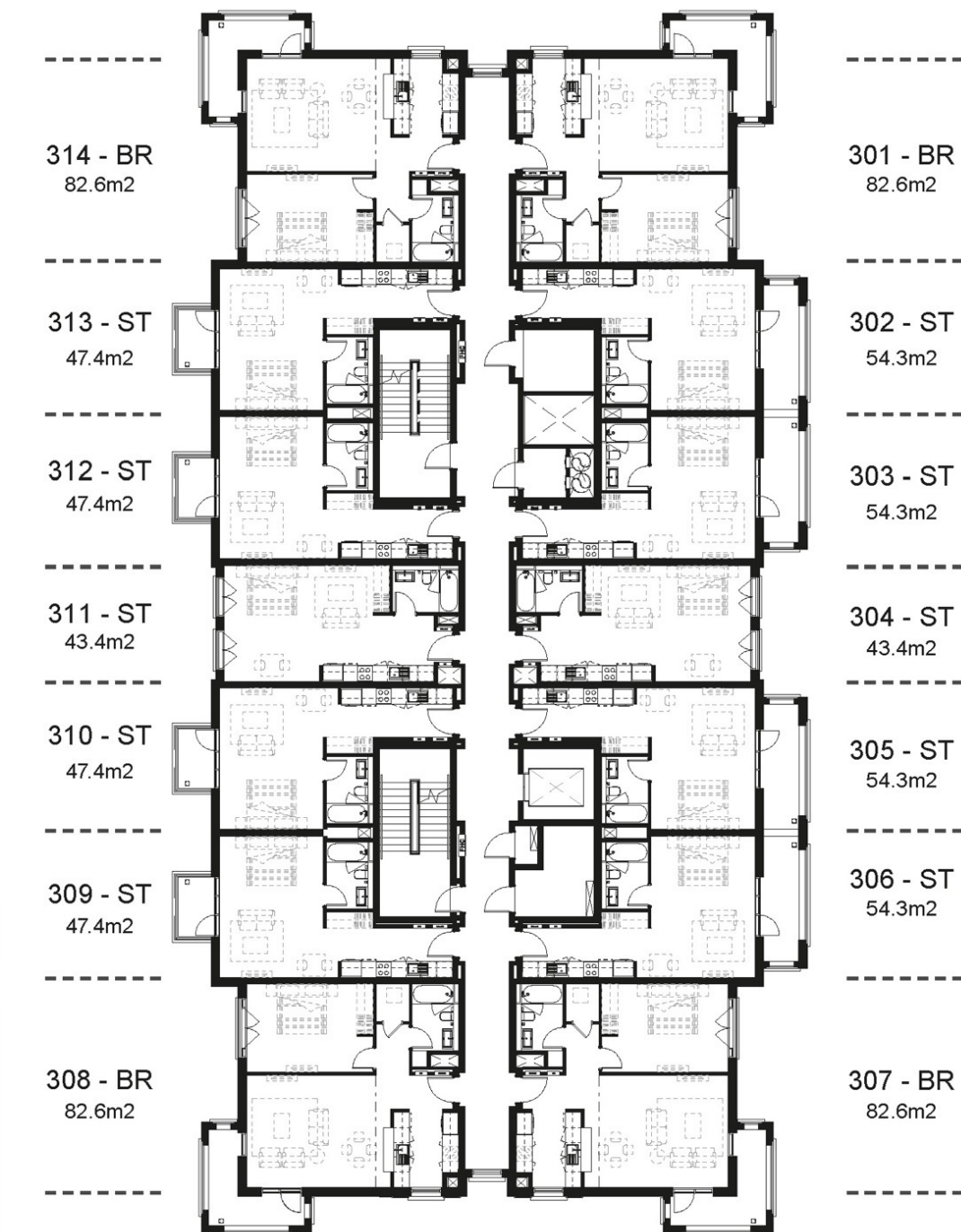
BUILDING 4



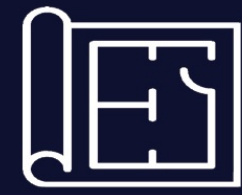
BUILDING 3



BUILDING 2



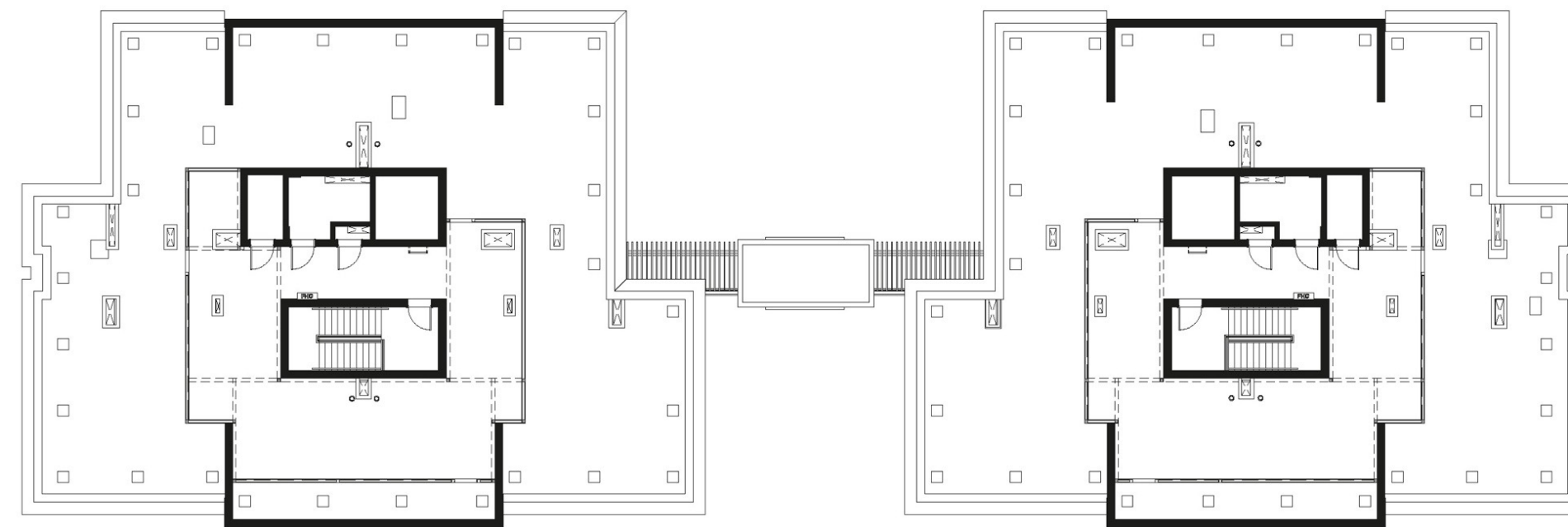
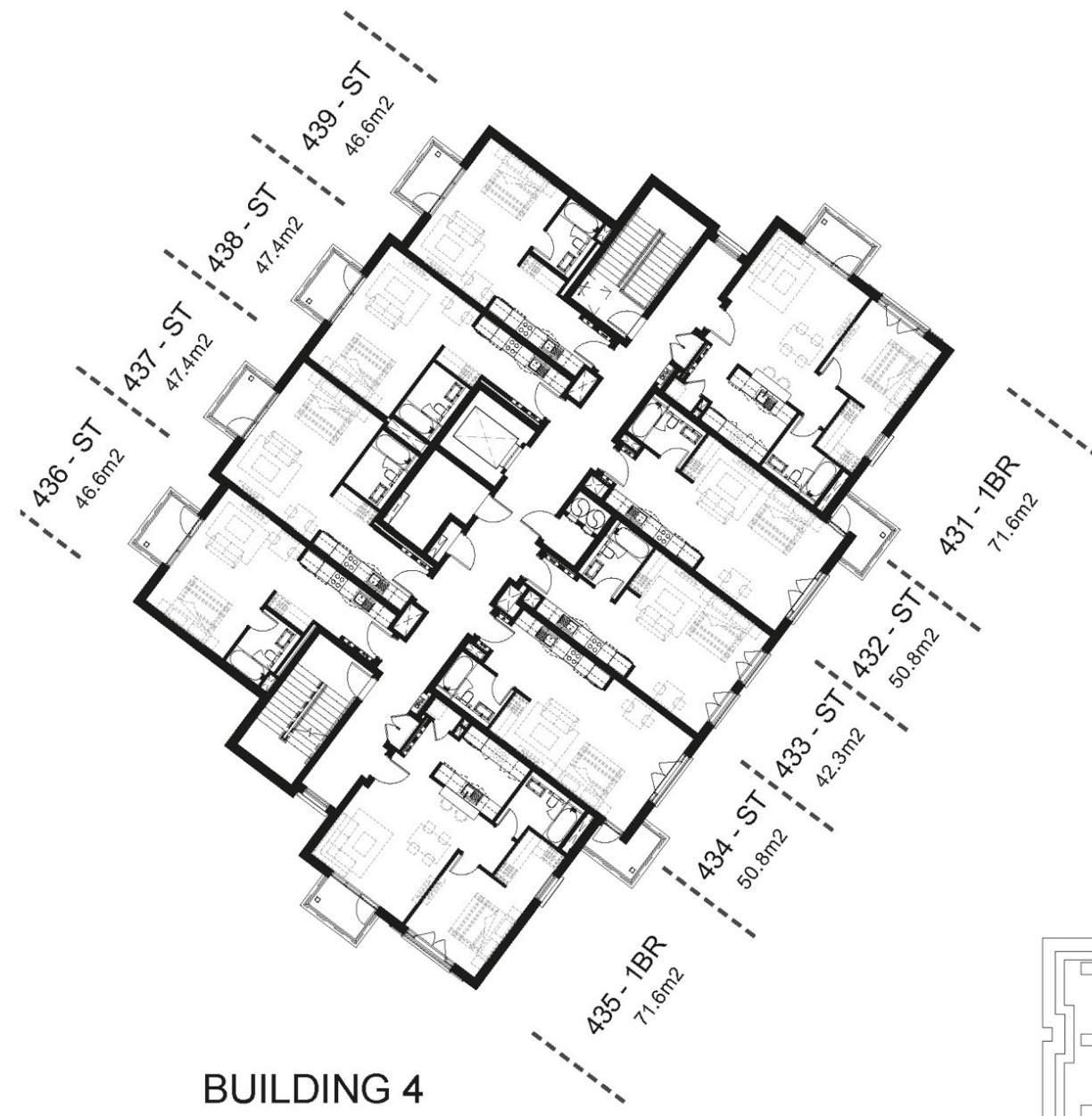
BUILDING 1



FLOOR PLAN



LEVEL 4



BUILDING 3

BUILDING 2

